



McLane, Graf,  
Raulerson & Middleton  
Professional Association

11 South Main Street, Suite 500 | Concord, NH 03301  
Tel: 603.226.0400 | www.mclane.com

OFFICES IN:  
MANCHESTER  
CONCORD  
PORTSMOUTH  
WOBURN, MA

BARRY NEEDLEMAN  
Direct Dial: 603-230-4407  
Email: barry.needleman@mclane.com  
Admitted in NH, MA and ME

June 26, 2014

**VIA HAND DELIVERY**

Jane Murray, Secretary  
New Hampshire Site Evaluation Committee  
Department of Environmental Services  
29 Hazen Dr., Box 95  
Concord, NH 03302-0095

**Re: Application of New England Power d/b/a National Grid for a Certificate of Site and Facility for Construction of a New 230 kV Tap Line in Littleton, N.H. – N.H. SEC No. 2014-02**

Dear Ms. Murray:

I enclose ten (10) copies of the updated Project Area Wetlands Map for the above-referenced matter. The map was entered into evidence as Exhibit 3 at the Site Evaluation Committee hearing this morning. Please let me know should you have any questions.

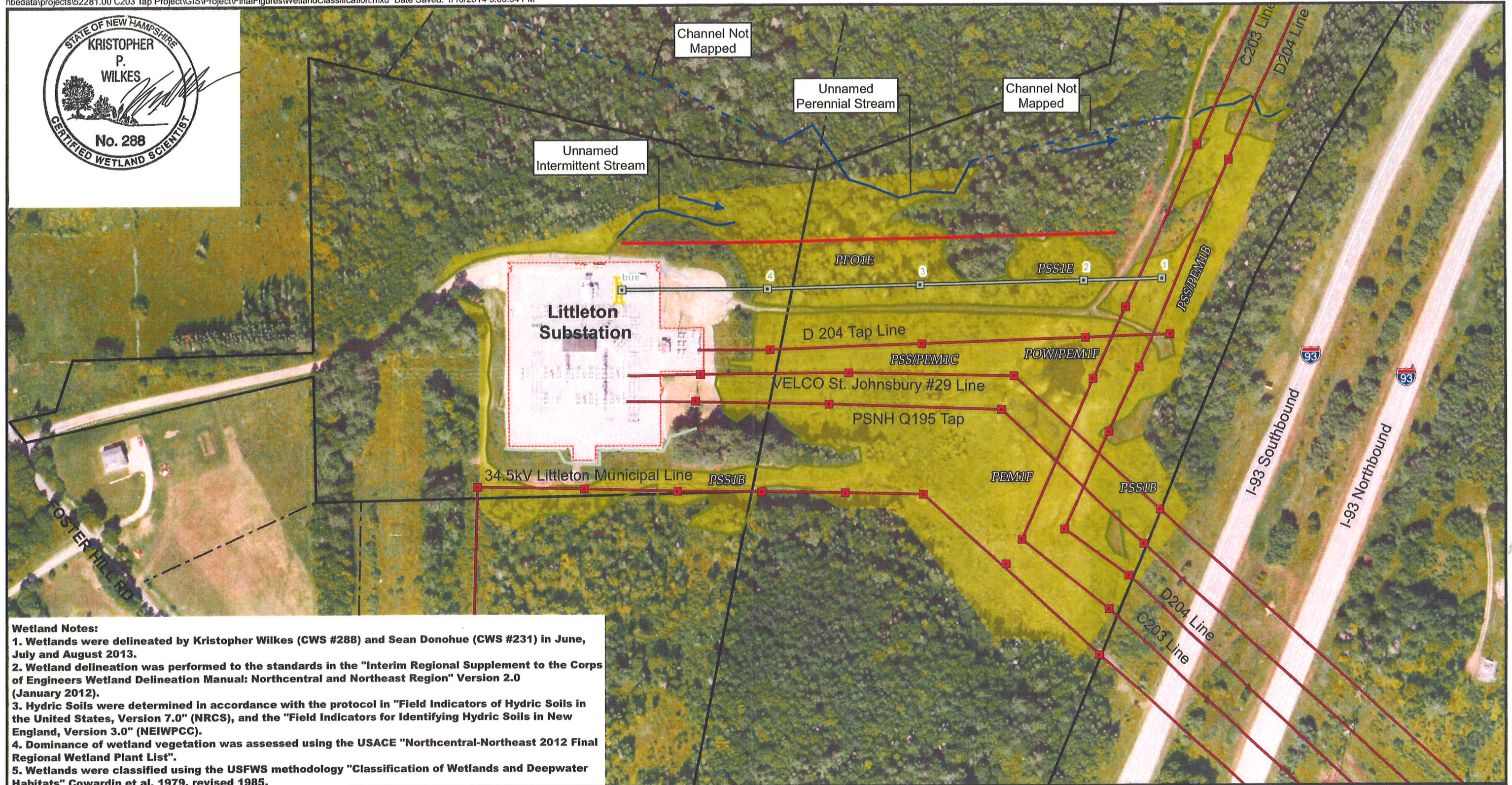
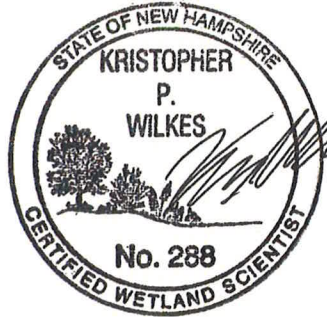
Sincerely,

*Adam Dutil* for:

Barry Needleman

BN:amd

Enclosure



**Wetland Notes:**  
 1. Wetlands were delineated by Kristopher Wilkes (CWS #288) and Sean Donohue (CWS #231) in June, July and August 2013.  
 2. Wetland delineation was performed to the standards in the "Interim Regional Supplement to the Corps of Engineers Wetland Delineation Manual: Northcentral and Northeast Region" Version 2.0 (January 2012).  
 3. Hydric Soils were determined in accordance with the protocol in "Field Indicators of Hydric Soils in the United States, Version 7.0" (NRCS), and the "Field Indicators for Identifying Hydric Soils in New England, Version 3.0" (NEIWPCC).  
 4. Dominance of wetland vegetation was assessed using the USACE "Northcentral-Northeast 2012 Final Regional Wetland Plant List".  
 5. Wetlands were classified using the USFWS methodology "Classification of Wetlands and Deepwater Habitats" Cowardin et al. 1979, revised 1985.

Proposed C203 Tap Structure	Existing Fence Line	Property Line
Existing Structure	bus	Abutter Property Line
Proposed C203 Tap Line	Delineated Wetland Edge	
Existing Transmission Line	Wetland Resource Area	
Proposed ROW/Edge of Tree Clearing	Ditch	
	Stream	
	Stream Channel Not Mapped	

Source:  
NGRID T-SHEETS  
Existing Survey, VHB

➔

0      200      400 Feet

**NEW C203 New 230 kV Tap Line**

Figure 2 Project Area Wetlands Map  
Foster Hill Road  
Littleton, New Hampshire

