

**MEMORANDUM OF UNDERSTANDING
BETWEEN
NEW HAMPSHIRE STATE HISTORIC PRESERVATION OFFICER
and
EVERSOURCE ENERGY
REGARDING THE SEACOAST RELIABILITY PROJECT,
MADBURY TO PORTSMOUTH, NEW HAMPSHIRE**

WHEREAS, In accordance with RSA 227-C:9 Directive for Cooperation in the Protection of Historic Resources, this Memorandum of Understanding (MOU) is entered into by and between the New Hampshire Division of Historical Resources (NHSHPO) and Public Service Company of New Hampshire d/b/a Eversource Energy (“Eversource”), collectively (the “Parties”); and

WHEREAS, all state agencies, departments, commissions and institutions are directed to cooperate with the NHSHPO for the preservation of historic resources during all state licensed, assisted or contracted projects, activities or programs pursuant to RSA 227-C:9 Directive for Cooperation in the Protection of Historic Resources, and

WHEREAS, Eversource has applied for a certificate from the New Hampshire Site Evaluation Committee and proposes to construct, own, operate and maintain a new 13-mile 115-kV electric transmission line between existing substations in Madbury, New Hampshire and Portsmouth, New Hampshire and to upgrade existing substations (collectively known as the Seacoast Reliability Project (the “Project”); and

WHEREAS, United States Army Corps of Engineers (“USACE”), the lead federal agency for the purposes of complying with 36 CFR 800, has determined that the Project is a federal undertaking subject to Section 106 of the National Historic Preservation Act, as amended, and its implementing regulations, Protection of Historic Properties, 36 CFR Part 800; and

WHEREAS, USACE has initiated consultation with the NHSHPO 36 Code of Federal Regulations (“CFR”) part 800, and 33 CFR Part 325, regulations implementing Section 106 of the National Historic Preservation Act (16 USC §470f), for the portions of the Project area within the USACE permit area;

WHEREAS, a comprehensive survey of properties in the project area and consultation with the USACE and NHSHPO determined that no known archaeological sites that are listed in, or are eligible for listing in, the National Register of Historic Places will be affected by the Project; and

WHEREAS, the Project will adversely affect the following four above-ground resources that are listed in or are eligible for listing in the National Register of Historic Places:

- Alfred Pickering Farm, Newington, New Hampshire
- Durham Point Historic District, Durham, New Hampshire
- Little Bay Underwater Cable Terminal Houses Historic District, Durham and Newington, New Hampshire
- Newmarket and Bennett Roads Farms Historic District, Durham, New Hampshire; and

WHEREAS, on October 4, 2017 Eversource, USACE, NHSHP, and Consulting Parties met to discuss measures to be taken by Eversource to avoid, minimize, and mitigate Project effects upon historic resources, Eversource and NHSHP conducted public meetings on January 10, 2017 in Portsmouth, NH and October 27, 2017 in Durham, and Eversource and the NHSHP met with the Town of Newington on August 24, 2018 to discuss the resolution of adverse effects to the Pickering Farm; and

WHEREAS, USACE, NHSHP and Eversource have entered into a Memorandum of Agreement (“MOA”) to address resolution of adverse effects to the one historic property within the jurisdiction of USACE (Little Bay Underwater Cable Terminal Houses Historic District) pursuant to 36 Code of Federal Regulations (“CFR”) part 800, and 33 CFR Part 325, regulations implementing Section 106 of the National Historic Preservation Act (16 USC §470f); Appendix A; and

NOW, THEREFORE, NHSHP and Eversource agree that execution of this MOU resolves the Project’s effects through the implementation of the following stipulations which will be carried out by Eversource in the event that the Seacoast Reliability Project is approved and implemented:

STIPULATIONS

I. Alfred Pickering Farm

1. Eversource shall utilize a weathering steel H-Frame structure on the property in order to minimize effects to the Alfred Pickering Farm.
2. The publication of a publicly oriented booklet will be funded by Eversource and overseen by the Eversource cultural resource professional. The booklet will provide a brief history of agriculture in Newington from its founding to the present highlighting different agricultural periods or trends over time, an architectural guide to the styles and types of farm houses and agricultural outbuildings in the community, and a brief overview of no more than 20 individual farms extant in Newington as of 2018. A variety of pre-existing studies (town-wide area form, map study etc.), and secondary and primary resources are available to inform the preparation of the booklet. The booklet will include a table of contents, historic and modern maps, historic (as available) and present day photographs, and a ‘further reading and research’ page.

The booklet will be designed by a graphic designer in collaboration with, and using content provided by, a 36 CFR 61-qualified architectural historian. The soft-cover half-fold booklet with saddle stitch binding of approximately 5”x7” and approximately 30 black and white pages will be professionally printed. The cost of printing 100 copies will be funded by Eversource.

One digital draft proof of the booklet will be provided to DHR to review and comment within 30 days of receipt. At a minimum, a final copy must be provided to the New Hampshire Division of Historical Resources, New Hampshire State Library, New Hampshire Historical Society, Langdon Library in Newington, Newington Public School library and social sciences department, and the Newington Historical Society, with the remaining copies distributed to the offices of the Town of Newington.

The booklet will be completed within two years of the start of construction of the Project.

After completion of the booklet, a public presentation in the Town of Newington will be conducted to celebrate Newington’s agricultural history. The presentation will be coordinated by Eversource

and its Architectural Historian consultant in coordination with NHSHPO. The presentation will provide an overview of the research conducted in support of the booklet along with a wide variety of visuals for the public. Other information presented may include how to list a property to the New Hampshire State or National Registers of Historic Places, how to seek assistance with maintenance issues, and/or other preservation related issues.

II. Durham Point Historic District

1. Seven historic stone walls and one granite quarry that are contributing to the Durham Point Historic District will be impacted by the Project. Eversource shall employ the following avoidance and minimization measures, as shown on the plan sheet identified as Appendix B hereto:

	Appendix B Map Sheet Number
WP-32	5
WP-34	5
WP-35	5-6
WP-35D	6
WP-35B	6
WP-35A	7

2. Physical impacts to one of the seven walls shall be minimized by widening one existing breach in said wall and repairing a second existing breach in said wall with the stone removed from the first breach.

Stone Wall ID	Appendix B Map Sheet Number
WP-33	5

3. Physical impacts to features of the granite quarry (Appendix B: Map Sheet Number 5) shall be avoided by adjusting access routes around the quarry features. In two locations, one an access point and the second a work pad location, timber matting shall be used as a protective measure during construction.

III. Newmarket and Bennett Roads Farms Historic District

1. Thirteen historic stone walls that contribute to the rural character of the Newmarket and Bennett Roads Farms Historic District will be impacted by the Project. Eversource shall employ the following avoidance and minimization measures, as shown on the plan sheet identified as Appendix B hereto:
 - a. Physical impacts to all thirteen historic stone walls shall be avoided by the Project through the implementation of one or more of the following four measures to include:
 - (a) not traversing the wall, (b) traversing the wall through an existing breach, (c) traversing the wall using timber matting to temporarily bridge over the wall, or (d) placing the work pad on top of timber matting to elevate work pad above the wall.

Stone Wall ID	Appendix A Map Sheet Number
WP-12	1
WP-13	1

WP-14	1-2
WP-14A	2
WP-15	2
WP-15A	2
WP-16	3
WP-17	3
WP-18	3
WP-19	3
WP-20	3
WP-20A	3
WP-20B	3

ADMINISTRATIVE CONDITIONS

A. GENERAL PROVISIONS

1. Confidentiality of Records and Information. The signatories shall maintain the confidentiality of records and information pertaining to the location, character or ownership of archeological sites consistent with NH RSA 227-C:11 and Section 304 of the National Historic Preservation Act.
2. Eversource shall ensure that environmental inspectors have been trained appropriately in the identification of, and are aware of the potential to encounter, significant cultural resources including human remains and/or grave-associated artifacts. All onsite personnel shall receive cultural resources sensitivity training outlined in the Historic Properties Training Plan; and shall be made aware of, and directed to follow procedures outlined in, the Unidentified Discovery Plan (“UDP”); Appendix C.

B. POST REVIEW DISCOVERIES

1. If Eversource materially changes plans for the proposed Project and such changes lead to newly discovered effects on historic properties, Eversource shall consult with NHSHPO to resolve any adverse effects to such properties.
2. If previously unidentified architectural and/or archaeological resources are discovered that may be adversely affected by the Project or if known resources are affected in an unanticipated manner, Eversource shall cease construction activities at that location and shall consult with NHSHPO to determine the need for appropriate evaluative studies, determinations of National Register eligibility, and/or mitigation measures, if needed, to resolve adverse effects.

C. DISPUTE RESOLUTION

1. Should Eversource object within thirty (30) days to any actions proposed or carried out pursuant to this Agreement, they shall consult with NHSHPO to resolve the objection.

2. If at any time during the implementation of the measures stipulated in this MOU, an objection should be raised by an interested member of the public, the parties will consult to determine the appropriate response.

D. MONITORING AND REPORTING

1. Each year following the execution of this MOU until it expires or is terminated, Eversource shall provide NESHPO a summary letter report detailing work undertaken pursuant to its terms. Such report shall include any scheduling changes proposed and any problems encountered in Eversource's efforts to carry out the terms of this MOU.
2. Eversource shall document the location of the above-identified stone walls in the Durham Point Historic District and the Newmarket and Bennett Road Historic District on its right of way plans to be referenced for all future maintenance and construction projects. Eversource will follow best management practices to minimize impact to the stonewalls, and no alteration or impacts to stonewalls are allowed without prior consultation with NESHPO and the property owner. The NESHPO and the property owner shall be contacted prior to any activity that requires alteration of a stonewall or in the event of incidental damage that results from Eversource operations, such as an emergency repair.

E. AMENDMENTS

1. This MOU may be amended when such an amendment is agreed to in writing by all signatories.

F. TERMINATION

1. If any signatory to this MOU determines that its terms will not or cannot be carried out, that party shall immediately consult with the other parties to attempt to develop an amendment per Condition E above. If within thirty (30) days an amendment cannot be reached, any signatory may terminate the MOU upon written notification to the other signatories. Signatories must continue to work to resolve the adverse effects of this undertaking.
2. Upon completion of the measures outlined in the Stipulations section of this agreement, Eversource's obligations under this agreement shall be considered complete and this agreement shall terminate.

Execution of this Memorandum of Understanding by Eversource and NHHPO, and implementation of its terms evidences that the effects of the Project on historic properties have been taken into account.

Nadine Miller
Deputy State Historic Preservation Officer
New Hampshire Division of Historical Resources

Date

Mary Ellen Paravalos, Vice President of ISO,
Siting and Compliance, Public Service Company
of New Hampshire d/b/a Eversource Energy

Date

Martha Roy, Town Administrator
Town of Newington

Date

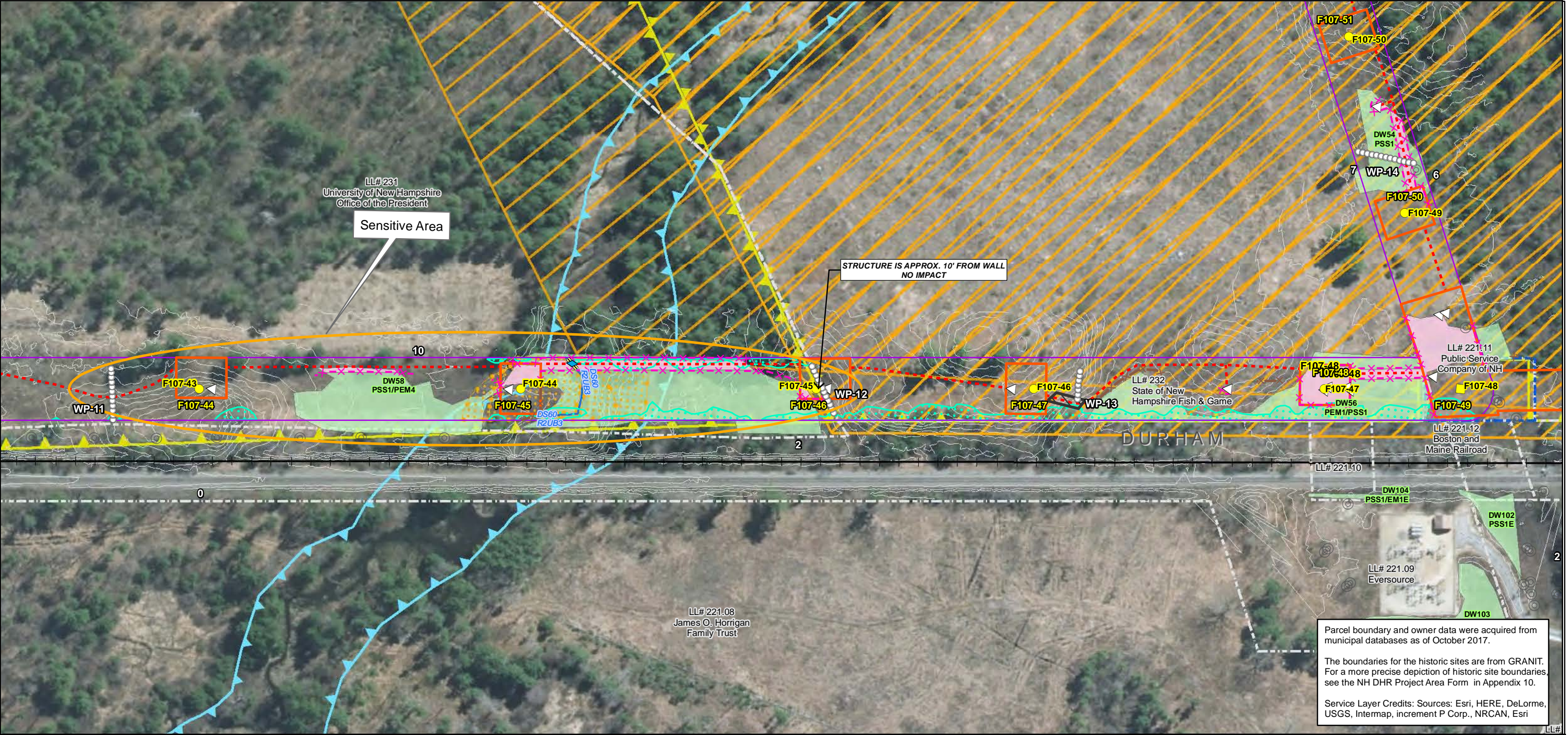
Todd I. Selig, Town Manager
Town of Durham

Date

[Note: By signing this MOU, the towns do not in any way relinquish or compromise their ability to take a position on the Project and/or any conditions which they believe should be included in a SEC Certificate, that are not included in this Agreement.]

APPENDIX A:
MEMORANDUM OF AGREEMENT BETWEEN US ARMY CORPS OF
ENGINEERS, NEW HAMPSHIRE DIVISION OF HISTORICAL RESOURCES,
EVERSOURCE

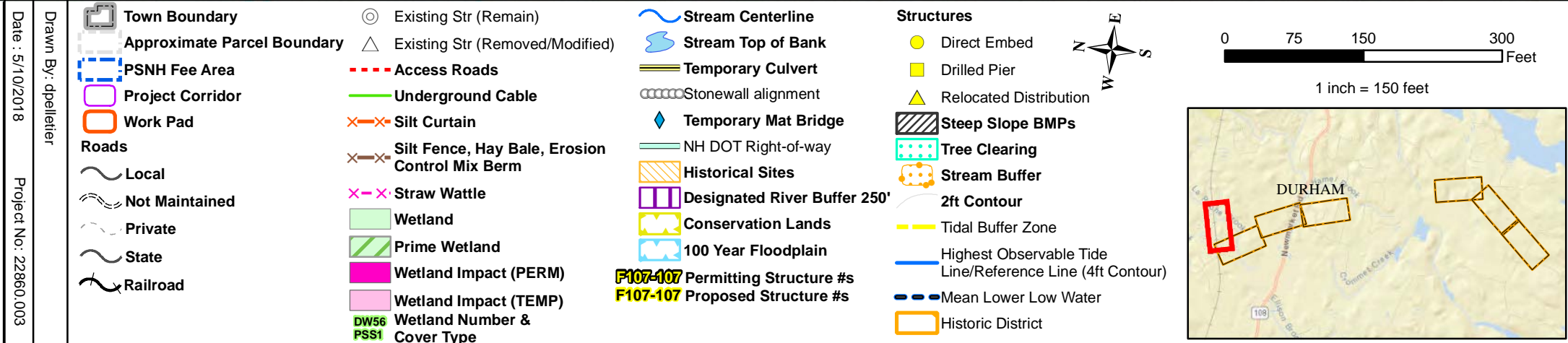
APPENDIX B:
NEWMARKET AND BENNET ROADS FARMS HISTORIC DISTRICT
AND DURHAM POINT HISTORIC DISTRICT PLAN SHEET



Parcel boundary and owner data were acquired from municipal databases as of October 2017.

The boundaries for the historic sites are from GRANIT. For a more precise depiction of historic site boundaries, see the NH DHR Project Area Form in Appendix 10.

Service Layer Credits: Sources: Esri, HERE, DeLorme, USGS, Intermap, increment P Corp., NRCAN, Esri



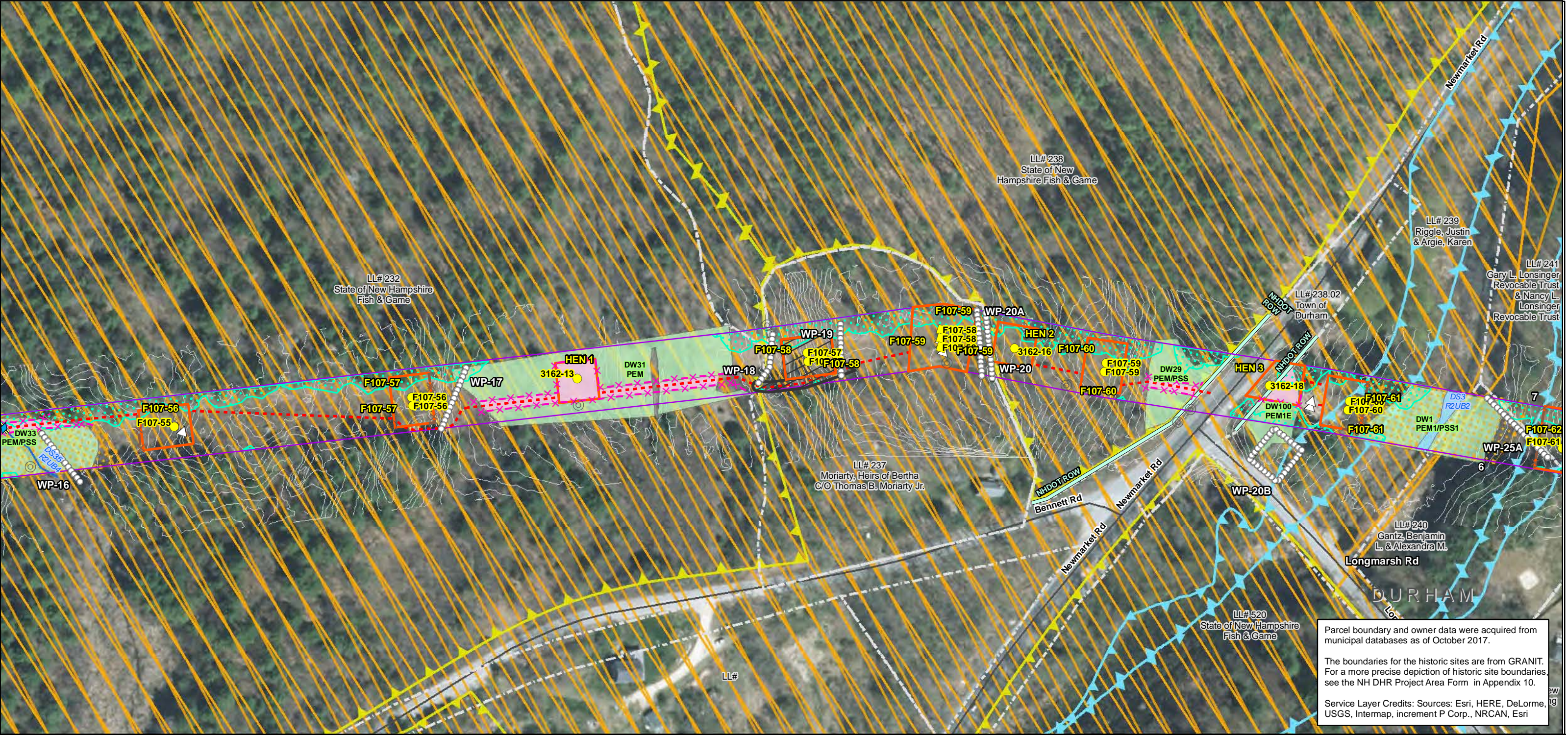
EVERSOURCE
ENERGY

NORMANDEAU ASSOCIATES
Environmental Consultants

Seacoast Reliability Project

Historic District Stone Wall Maps





Parcel boundary and owner data were acquired from municipal databases as of October 2017.

The boundaries for the historic sites are from GRANIT. For a more precise depiction of historic site boundaries, see the NH DHR Project Area Form in Appendix 10.

Service Layer Credits: Sources: Esri, HERE, DeLorme, USGS, Intermap, increment P Corp., NRCAN, Esri

Date : 5/10/2018

Drawn By: dpelletier

Project No: 22860.003

Town Boundary

Approximate Parcel Boundary

PSNH Fee Area

Project Corridor

Work Pad

Roads

Local

Not Maintained

Private

State

Railroad

Existing Str (Remain)

Existing Str (Removed/Modified)

Access Roads

Underground Cable

Silt Curtain

Silt Fence, Hay Bale, Erosion Control Mix Berm

Straw Wattle

Wetland

Prime Wetland

Wetland Impact (PERM)

Wetland Impact (TEMP)

Wetland Number & Cover Type

Stream Centerline

Stream Top of Bank

Temporary Culvert

Stonewall alignment

Temporary Mat Bridge

NH DOT Right-of-way

Historical Sites

Designated River Buffer 250'

Conservation Lands

100 Year Floodplain

F107-107 Permitting Structure #s

F107-107 Proposed Structure #s

Structures

Direct Embed

Drilled Pier

Relocated Distribution

Steep Slope BMPs

Tree Clearing

Stream Buffer

2ft Contour

Tidal Buffer Zone

Highest Observable Tide Line/Reference Line (4ft Contour)

Mean Lower Low Water

Historic District

1 inch = 150 feet

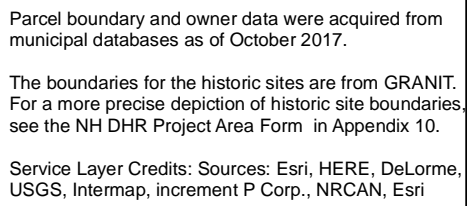
Seacoast Reliability Project

Historic District Stone Wall Maps

9/1/2017

Path: J:\Projects\PSNH_F107\MXD\SRP_Historic_MapSet_050218.mxd

Map 3 of 7





Parcel boundary and owner data were acquired from municipal databases as of October 2017.

The boundaries for the historic sites are from GRANIT. For a more precise depiction of historic site boundaries see the NH DHR Project Area Form in Appendix 10.

Service Layer Credits: Sources: Esri, HERE, DeLorme, USGS, Intermap, increment P Corp., NRCAN, Esri

Date : 5/10/2018

Drawn By: dpelletier

Project No: 22860.003

Town Boundary

Approximate Parcel Boundary

PSNH Fee Area

Project Corridor

Work Pad

Local

Not Maintained

Private

State

Railroad

Existing Str (Remain)

Existing Str (Removed/Modified)

Access Roads

Underground Cable

Silt Curtain

Silt Fence, Hay Bale, Erosion Control Mix Berm

Straw Wattle

Wetland

Prime Wetland

Wetland Impact (PERM)

Wetland Impact (TEMP)

Wetland Number & Cover Type

Stream Centerline

Stream Top of Bank

Temporary Culvert

Stonewall alignment

Temporary Mat Bridge

NH DOT Right-of-way

Historical Sites

Designated River Buffer 250'

Conservation Lands

100 Year Floodplain

F107-107 Permitting Structure #s

F107-107 Proposed Structure #s

Direct Embed

Drilled Pier

Relocated Distribution

Steep Slope BMPs

Tree Clearing

Stream Buffer

2ft Contour

Tidal Buffer Zone

Highest Observable Tide Line/Reference Line (4ft Contour)

Mean Lower Low Water

Historic District

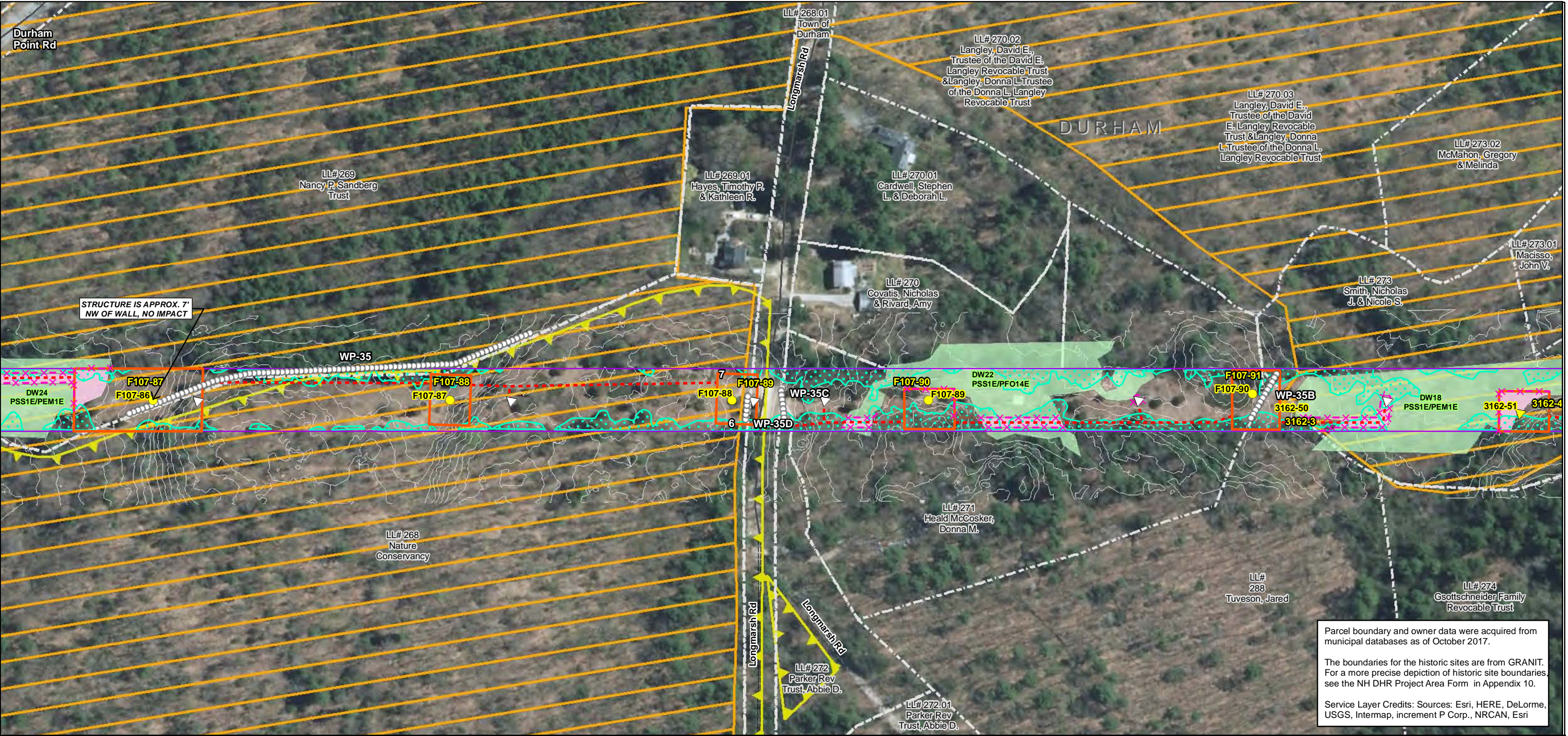
0 75 150 300 Feet

1 inch = 150 feet

9/1/2017

Map 5 of 7

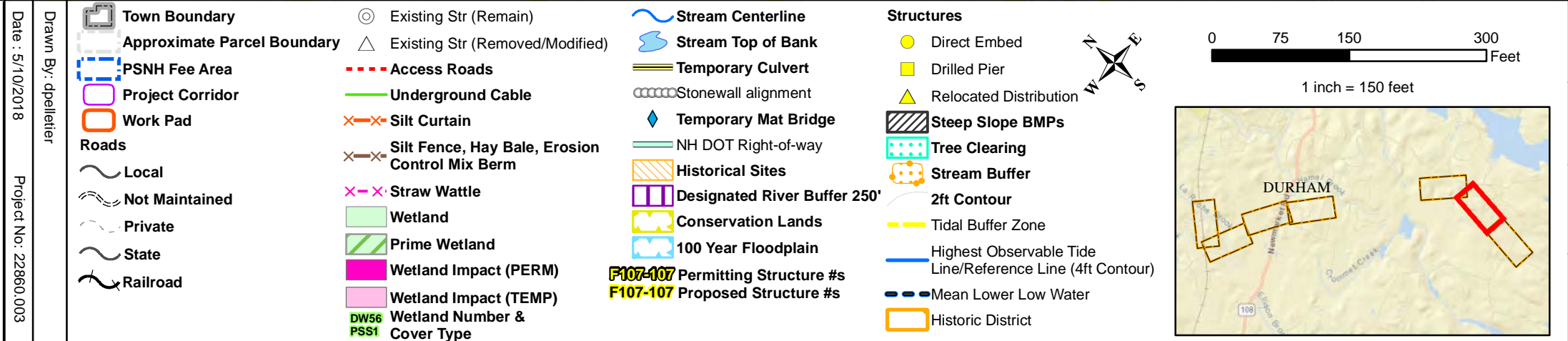
Path: J:\Projects\PSNH_F107\MXD\SRP_Historic_MapSet_050218.mxd



Parcel boundary and owner data were acquired from municipal databases as of October 2017.

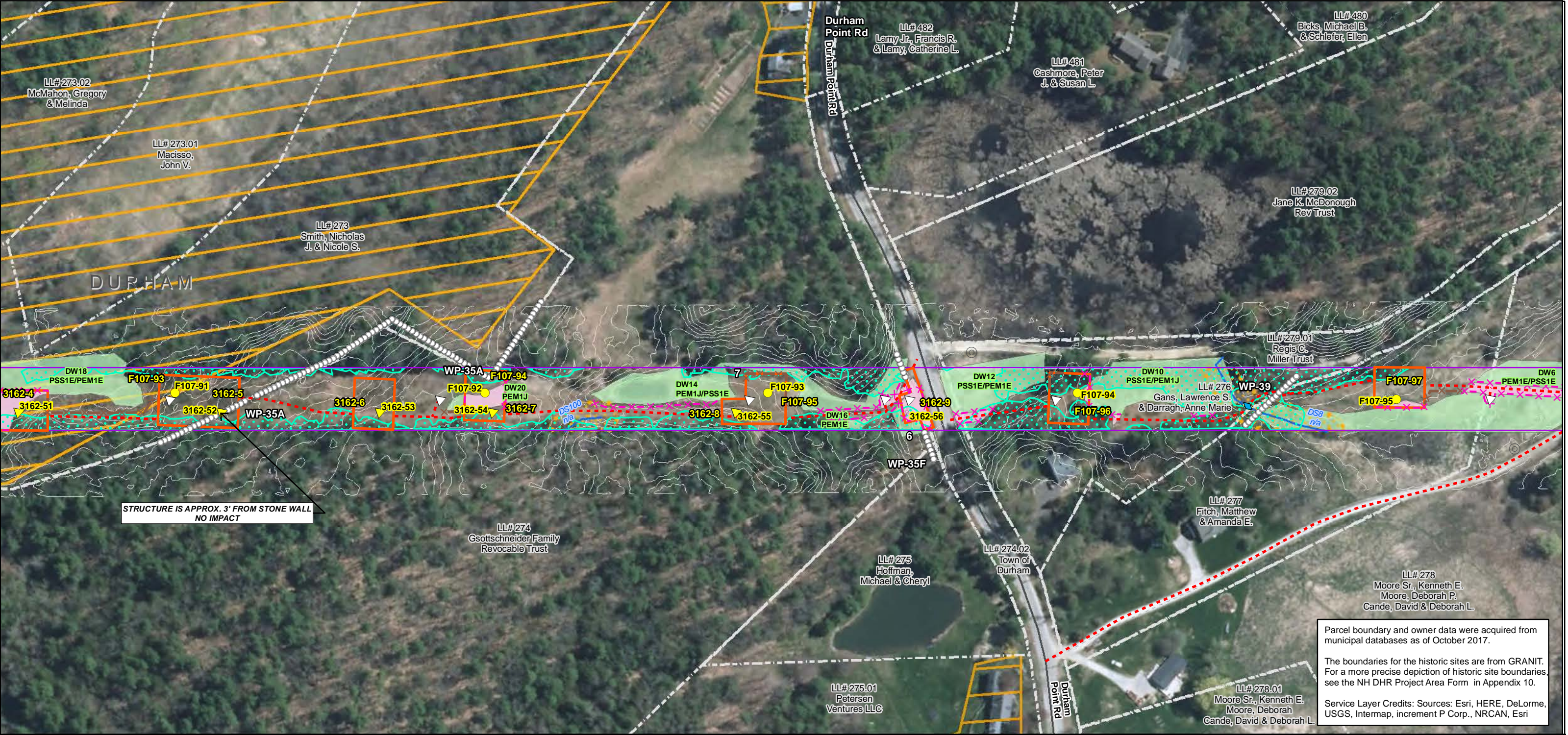
The boundaries for the historic sites are from GRANIT. For a more precise depiction of historic site boundaries see the NH DHR Project Area Form in Appendix 10.

Service Layer Credits: Sources: Esri, HERE, DeLorme, USGS, Intermap, increment P Corp., NRCAN, Esri



Seacoast Reliability Project

Historic District Stone Wall Maps



Date : 5/10/2018

Drawn By: dpelletier

Project No: 22860.003

Town Boundary

Approximate Parcel Boundary

PSNH Fee Area

Project Corridor

Work Pad

Local

Not Maintained

Private

State

Railroad

Existing Str (Remain)

Existing Str (Removed/Modified)

Access Roads

Underground Cable

Silt Curtain

Silt Fence, Hay Bale, Erosion Control Mix Berm

Straw Wattle

Wetland

Prime Wetland

Wetland Impact (PERM)

Wetland Impact (TEMP)

Wetland Number & Cover Type

Stream Centerline

Stream Top of Bank

Temporary Culvert

Stonewall alignment

Temporary Mat Bridge

NH DOT Right-of-way

Historical Sites

Designated River Buffer 250'

Conservation Lands

100 Year Floodplain

F107-107 Permitting Structure #s

F107-107 Proposed Structure #s

Direct Embed

Drilled Pier

Relocated Distribution

Steep Slope BMPs

Tree Clearing

Stream Buffer

2ft Contour

Tidal Buffer Zone

Highest Observable Tide Line/Reference Line (4ft Contour)

Mean Lower Low Water

Historic District

075150300

Feet

1 inch = 150 feet

EVERSOURCE

ENERGY

NORMANDEAU ASSOCIATES

Environmental Consultants

Seacoast Reliability Project

Historic District Stone Wall Maps

SARAH D. ALLEN

No. 083

CERTIFIED WETLAND SCIENTIST

9/1/2017

Map 7 of 7

Path: J:\Projects\PSNH_F107\MXD\SRP_Historic_MapSet_050218.mxd

APPENDIX C:
TRAINING, MONITORING, UNANTICIPATED DISCOVERY, CURATION AND
REPATRIATION PLANS

Seacoast Reliability Project

**Historic Properties Monitoring
Plan Unanticipated Discovery Plan
Historic Properties Training Plan
Curation and Repatriation Plan**

**Prepared by
Eversource Energy**

May 2, 2018

Table of Contents

1. INTRODUCTION	1
2. HISTORIC PROPERTIES MONITORING PLAN.....	1
2.1. PLAN INTEGRATION.....	1
2.2. PERSONNEL ROLES AND RESPONSIBILITIES	1
2.3. CONFIDENTIALITY.....	2
3. UNANTICIPATED DISCOVERY PLAN	3
3.1. PLAN INTEGRATION.....	3
3.2. PERSONNEL ROLES AND RESPONSIBILITIES	4
3.3. PROCEDURES FOR THE UNANTICIPATED DISCOVERY OF CULTURAL ARTIFACTS OR FEATURES ...	4
3.4. PROCEDURES FOR THE UNANTICIPATED DISCOVERY OF HUMAN REMAINS	5
3.5. ADDITIONAL PROVISIONS FOR SITE SECURITY	6
3.6. PROCEDURES FOR UNANTICIPATED EFFECTS ON HISTORIC ARCHITECTURAL PROPERTIES	6
3.7. CONFIDENTIALITY.....	7
4. HISTORIC PROPERTIES TRAINING PLAN.....	7
4.1. PLAN INTEGRATION.....	8
4.2. ORIENTATION TRAINING	8
4.3. SUPERVISOR TRAINING.....	10
4.4. TRAINING SCHEDULE	10
5. CURATION AND REPATRIATION PLAN.....	11
5.1. PLAN INTEGRATION.....	11
5.2. PERSONNEL ROLES AND RESPONSIBILITIES	12
5.3. PROCEDURES FOR THE CURATION OF ARTIFACTS FROM PRIVATE LANDS	12
5.4. PROCEDURES FOR THE RE-INTERMENT OF HUMAN REMAINS FROM NON-FEDERAL LANDS	13

1. INTRODUCTION

This document contains the Historic Properties Monitoring Plan (“Monitoring Plan”), Unanticipated Discovery Plan (“UDP”), Historic Properties Training Plan (“Training Plan”), and Curation and Repatriation Plan (“CRP”) for the Seacoast Reliability Project (“SRP” or “Project”)

2. HISTORIC PROPERTIES MONITORING PLAN

This Historic Properties Monitoring Plan (“Monitoring Plan”) identifies the procedures that Eversource Energy (“Eversource”) and its contractors will follow to ensure the protection of known and previously unidentified historic properties during construction

2.1. Plan Integration

The Monitoring Plan is one of several plans that are designed to ensure that historic properties receive appropriate treatment and protection. All personnel engaged in the construction of the Project will receive training in accordance with the *Seacoast Reliability Project Historic Properties Training Plan* (“Training Plan”). The training will provide information about how to proceed in the case of unanticipated discoveries in accordance with the *Seacoast Reliability Project Unanticipated Discovery Plan* (“UDP”). Eversource will also notify construction personnel of any specific actions required under the *Seacoast Reliability Project Memorandum of Agreement* (“MOA”) with the U.S. Army Corps of Engineers (“USACE”) and the New Hampshire Division of Historical Resources/State Historic Preservation Office (“NHSHPO”) and/or *Memorandum of Understanding* (“MOU”) with the NHSHPO to protect known historic properties in the areas in which they are working.

2.2. Personnel Roles and Responsibilities

The following personnel have roles in implementing the Monitoring Plan during construction. The names and contact information for the supervisory personnel responsible for overseeing and reporting on the progress of the monitoring are provided in Attachment A: List of Responsible Personnel. The List of Responsible Personnel will be updated to reflect any changes in personnel or their contact information at the time the change is made and a revised copy of the list will be distributed to all supervisory personnel involved in the historic properties monitoring program. Multiple roles and responsibilities may be performed by the same individual.

Cultural Resource Specialist (“CRS”) – An individual who meets the *Secretary of the Interior’s Professional Qualifications Standards* (36 CFR 61) and applicable state qualification standards who is responsible for implementing the MOA/MOU and its associated plans, including this Monitoring Plan.

Cultural Liaison – The cultural liaison supervises the personnel involved in the day-to-day construction monitoring. The cultural liaison will complete the Supervisor Training identified in the Training Plan and will be responsible for ensuring that construction personnel receive the Orientation Training as specified in the Training Plan. The cultural liaison is also responsible for initiating the UDP if potential archeological deposits, human remains, or unanticipated effects to known historic properties are discovered during construction.

Environmental Monitors – Eversource will deploy a team of environmental monitors who will report to the cultural liaison and be responsible for overseeing construction and ensuring compliance with the terms of the MOA/MOU and applicable environmental laws. Environmental monitors will complete the Orientation Training and Supervisor Training identified in the Training Plan. Each environmental monitor will be assigned a manageable section of the transmission line or other component of the Project to be determined by size, extent of construction activity, and the amount of potential natural resources and/or historic properties present. During the Supervisor Training specified in the Training Plan, the environmental monitors will be given information about known historic properties within their assigned section, including any treatments for properties specified in the MOA/MOU. Environmental monitors will be familiar with the construction schedule and will be on-site or on-call during any period when construction is ongoing. The environmental monitor will inform construction crews of any measures that must be implemented in a particular area to avoid or protect known historic properties in accordance with the MOA/MOU, if applicable, and ensure through on-site inspection that any required measures are carried out. If a construction crew reports an unanticipated discovery, the environmental monitor will immediately report the find to the cultural liaison and implement the initial procedures of the UDP.

Construction Site Supervisor – During construction, the construction site supervisor will be responsible for implementing any measures identified by the cultural liaison or environmental monitor to avoid or protect historic properties. In the event of an unanticipated discovery, the construction site supervisor will immediately stop work in accordance with the UDP and report the find to the cultural liaison or environmental monitor.

Qualified Professional Archaeologist (“QPA”) – An individual who meets the *Secretary of the Interior’s Professional Qualifications Standards* (36 CFR 61) for archaeology. The QPA may fulfill certain responsibilities for monitoring and reporting that are delegated by the CRS and have responsibilities to monitor construction activities specified in the MOA/MOU in sensitive areas or areas known to contain potentially significant archaeological resources or human remains or within proximity of area known to contain human remains. RSA 289:3, III. Prior to entering the field, the QPA must attend the Orientation Training and Supervisor Training described in the Training Plan.

Qualified Architectural Historian (“QAH”) – An individual who meets the *Secretary of the Interior’s Professional Qualifications Standards* (36 CFR 61) for architectural history. The QAH may fulfill certain responsibilities for monitoring and reporting that are delegated by the CRS and have responsibilities for monitoring construction activities that have the potential to cause effects to historic architectural resources specified in the MOA/MOU. Prior to entering the field, the QAH must attend the Orientation Training and Supervisor Training described in the Training Plan.

2.3. Confidentiality

During Project Orientation Training, Eversource will ensure that the construction team, environmental monitors, CRS, cultural liaison, QPA, QAH, and others acting on its behalf in connection with monitoring and reporting on the Project understand the confidentiality provisions specified in the *NHSHPO Standards and Guidelines for Archaeological Investigations in New Hampshire* [Section VIII, C] (2018).

3. UNANTICIPATED DISCOVERY PLAN

This Unanticipated Discovery Plan (“UDP”) was prepared for the Seacoast Reliability Project (“SRP” or “Project”). The plan identifies the procedures that Eversource Energy (“Eversource”)

and its contractors will follow in the event that any of the following are discovered during construction or other Project-related activities:

1. Potentially significant archaeological deposits;
2. Human remains; or
3. Unanticipated effects upon known historic properties identified in the Project's Area of Potential Effects ("APE") during the identification and evaluation stage of the Section 106 process.

In addition, the UDP is consistent with the following federal and state regulations and guidelines pertaining to the discovery of cultural materials and human remains:

- Section 106 of the National Historic Preservation Act of 1966, as amended ("NHPA", 36 CFR 800);
- Archaeological Resources Protection Act of 1979 ("ARPA", 43 CFR 7);
- Native American Graves Protection and Repatriation Act ("NAGPRA", 43 CFR 10);
- Advisory Council on Historic Preservation: *Policy Statement Regarding Treatment of Burial Sites, Human Remains, and Funerary Objects* (Advisory Council, February 23, 2007);
- State of New Hampshire RSA Title XIX, Chapter 227-C: 8a-g, Discovery of Remains, etc.;
- State of New Hampshire RSA Title XXVI, Chapter 289, Cemeteries; and
- New Hampshire Division of Historical Resources NHSHPO *Standards and Guidelines for Archaeological Investigations in New Hampshire* [Section VIII, A, B] (2018).

3.1. Plan Integration

The UDP is one of several plans that are designed to ensure that historic properties receive appropriate treatment and protection. The *Seacoast Reliability Project Historic Properties Monitoring Plan* ("Monitoring Plan") describes the program that Eversource will implement to monitor construction and other activities that have the potential to impact historic properties. Personnel engaged in the construction of the Project and in-field implementation of the *Seacoast Reliability Project Memorandum of Agreement ("MOA") with the U.S. Army Corps of Engineers ("USACE")* and the *NHSHPO and/or Memorandum of Understanding ("MOU")* with the NHSHPO will receive training, including instruction on the implementation of this UDP, in accordance with the *Seacoast Reliability Project Historic Properties Training Plan* ("Training Plan"). Artifacts and human remains that constitute unanticipated discoveries will be treated in the manner described in the Curation and Repatriation Plan.

3.2. Personnel Roles and Responsibilities

The following Eversource personnel and contractors have supervisory roles in implementing the UDP in the event of an unanticipated discovery during the construction or any other activity associated with the Project during the term the PA is in effect. Multiple roles and responsibilities may be performed by the same individual. Contact information for the supervisory personnel is provided in Attachment A: List of Responsible Personnel.

Cultural Resource Specialist ("CRS"): Individual who meets the *Secretary of the Interior's Professional Qualifications Standards* (36 CFR 61) and applicable state qualification standards who is responsible for implementing the MOA/MOU and its associated plans, including this UDP in the event of an unanticipated discovery.

Cultural Liaison: An individual responsible for day-to-day construction monitoring, including reporting any unanticipated discoveries to the CRS to implement the UDP.

Environmental Monitor: An individual who reports to the cultural liaison and are responsible for monitoring a specified section of the Project to protect environmental resources and historic properties during construction.

Construction Site Supervisor: An individual responsible for overseeing a construction crew and reporting any unanticipated discovery to the cultural liaison and environmental monitor.

Qualified Professional Archaeologist ("QPA"): An individual who meets the *Secretary of the Interior's Professional Qualifications Standards* (36 CFR 61) for archaeology and may be brought in to assess or investigate an unanticipated discovery of a potentially significant archaeological site.

Qualified Architectural Historian ("QAH"): An individual who meets the *Secretary of the Interior's Professional Qualifications Standards* (36 CFR 61) for architectural history and may be brought in to assess or investigate an unanticipated effect on a historic architectural property. This plan also refers to various federal, state, and local agencies that will be contacted if an unanticipated discovery is made. A list of those contacts is contained in Attachment B: Federal, State, and Local Agency Contacts.

3.3. Procedures for the Unanticipated Discovery of Cultural Artifacts or Features

Eversource personnel, contractors and environmental monitors will adhere to the following procedures if an unanticipated discovery of cultural artifacts or features is made during construction or other Project-related activities:

1. The construction site supervisor will immediately notify the cultural liaison and halt construction activities within 100 feet of the discovery and direct that all materials are to be left in place, unless they are in immediate jeopardy because of Project activities.
2. The cultural liaison will inform the CRS or, if the CRS is unavailable, the QPA of the find and dispatch the environmental monitor to the site to oversee measures to secure the area from damage or looting. If feasible, a fence or other barrier will be erected to demarcate and protect the discovery area.
3. Within 24 hours of the discovery, the CRS or QPA will notify the NESHPO and the USACE. The CRS or QPA will visit the site to assess, record, and photograph the find and ensure that construction activities have halted, the area of the discovery has been clearly marked, and any other appropriate measures have been implemented to protect the discovery from looting and vandalism and weather-related damage.

4. The CRS or QPA will prepare a written report that describes the location and nature of the discovery and makes recommendations about its potential significance. The CRS will transmit the report to the NH DHRNHSHPO and USACE for review and comment.
5. The NH DHRNHSHPO will make a determination of eligibility and notify the CRS within one week15 days of the submittal of the report.
4. If the NHSHPO determines that the discovery constitutes a site that is eligible for listing in the National Register of Historic Places and the Project will have an adverse effect on the characteristic defining elements of the site's significance, Eversource will develop a site-specific treatment plan that provides measures that will be implemented to avoid, minimize, or mitigate the effect. The treatment plan will be submitted to the NHSHPO and USACE for approval and implemented prior to the recommencement of work within 100 feet of the site.

3.4. Procedures for the Unanticipated Discovery of Human Remains

If human remains are discovered during construction or other Project-related activity, Eversource will implement the following procedures in compliance with New Hampshire RSA Title XIX, Chapter 227-c:8a-g and the NHSHPO's *Standards and Guidelines for Archaeological Investigations in New Hampshire* [Section VIII, A] (2018).

1. The construction site supervisor will immediately halt construction activities within 100 feet of the discovery, cover and protect the burial, and notify the cultural liaison.
2. The cultural liaison will notify the CRS of the discovery and dispatch an environmental monitor to the site to oversee the installation of temporary site protection measures (e.g., high visibility warning tape, temporary fencing, and/or signage) around the area to prevent unintentional incursion and potential damage to the remains (see "Provisions for Site Security" below for additional measures that may be needed to protect the burial).
3. The CRS or the cultural liaison will contact the Office of the Chief Medical Examiner ("OCME") and the State Archaeologist at the NHSHPO.
4. If the site is declared a recent burial (less than 50 years old) or potential crime scene, the matter will be handled by the OCME and local law enforcement authorities according to the laws of governing such sites.
5. If the site is not a crime scene, is more than 50 years old, and the OCME releases responsibility to the State Archaeologist, the CRS will contact the USACE to notify them of the find.
6. The CRS will dispatch the QPA to delineate the extent of the burial and prepare a report of the findings and recommendations on measures that may be taken to avoid impacts to the site.

7. The CRS will submit the report to the NHSHPO and USACE along with a description of the measures that will be taken during construction to implement the recommendations to avoid impacts to the site.
8. If it is not feasible to avoid disturbing the human remains, the CRS will draft a site- specific disinterment/re-interment plan according to the following conditions:
 - a. If the human remains are determined to be Native American, the NHSHPO is responsible for notifying descendants or specific groups. When the burial is Native American, whether or not the group is federally recognized, RSA 227-C:8-d enjoins the State Archaeologist to immediately notify the leaders, officials, or spokesperson to determine the appropriate treatment of the burial (see also RSA 227-C:8-g).
 - b. If the human remains are not Native American, the State Archaeologist will seek identification of descendants to determine wishes for disposition of the burial (see also RSA 227-C:8-e and 8-g). If analysis of the remains is deemed appropriate, the State Archaeologist will consult with the CRS to develop a scope of work to be performed by a forensic archaeologist or other qualified professional (see RSA 227-C:8-f). The plan will include provisions to re-inter the remains at an alternate location after the completion of the study.

3.5. Additional Provisions for Site Security

The CRS, or the QPA acting on behalf of the CRS, will ensure that provisions are made to secure the area containing the human remains to prevent unauthorized entry to the site while their disposition is being determined. It may be necessary to install security fencing with locked gates at the site once the extent of the remains has been established. The fenced area will be large enough to stage and complete the disinterment process, if disinterment will be part of the treatment of the remains. If additional security is warranted, the CRS will consult with the State Archaeologist and implement the measures agreed upon.

3.6. Procedures for Unanticipated Effects on Historic Architectural Properties

Eversource personnel, contractors and environmental monitors will adhere to the following procedures if construction or other Project-related activities have the potential to cause unanticipated effects on a historic architectural property:

1. The construction site supervisor will immediately notify the cultural liaison and halt activities in the vicinity of the property.
2. The cultural liaison will inform the CRS or the QAH and dispatch the environmental monitor to the site to oversee measures to secure the property.
3. Within 24 hours of the discovery, the CRS will notify the NHSHPO and USACE.

4. The QAH will visit the site to assess, record, and photograph the condition of the property and ensure that measures have been implemented to protect it from any further harm.
5. The QAH will prepare a report that describes any damage or other effects to the property and contains recommendations for measures that may be taken to avoid, minimize, or mitigate any further effects.
6. The CRS will submit the report to the NHHPO and USACE for review.
7. The NHHPO, will consider the effect.
8. If the NHHPO determines that the Project will have an adverse effect on the characteristic defining elements of the property's significance, the NHHPO will request that Eversource develop a site-specific treatment plan that provides measures that will be implemented to avoid, minimize, or mitigate the effect. The treatment plan will be submitted to the NHHPO and USACE for approval prior to the commencement of work in the vicinity of the property.

3.7. Confidentiality

All members of the Eversource construction team will be instructed to keep any information about unanticipated discoveries confidential, limiting communications to the responsible personnel named in this plan.

4. HISTORIC PROPERTIES TRAINING PLAN

This Historic Properties Training Plan ("Training Plan") was developed for the Seacoast Reliability Project ("SRP" or "Project"). The plan describes the training program that Eversource Energy ("Eversource") will implement to ensure the protection of historic properties during construction or other Project-related activities. All Eversource personnel and contractors (including new, added, or replaced personnel) engaged in construction in the field or responsible for field implementation of the *Seacoast Reliability Project Memorandum of Agreement ("MOA") with the U.S. Army Corps of Engineers ("USACE")* and the New Hampshire Division of Historical Resources ("NHHPO") and/or *Memorandum of Understanding ("MOU")* with the NHHPO are required to attend Orientation Training that will include information about the treatment of historic properties during construction. Personnel who have a supervisory role in historic property monitoring and reporting must also receive the Supervisor Training described below.

4.1. Plan Integration

The program described in this Training Plan references the following other plans that have been developed to ensure the protection of historic properties:

- *Seacoast Reliability Project MOA with the USACE and the NHHPO and/or MOU with the NHHPO*: describes measures that will be implemented to avoid, minimize, or

mitigate adverse effects on known historic properties within the Project's Area of Potential Effects ("APE").

- *Seacoast Reliability Project Historic Properties Monitoring Plan* ("Monitoring Plan"): describes the program that Eversource will implement to monitor construction and other activities that have the potential to impact historic properties.
- *Seacoast Reliability Project Unanticipated Discovery Plan* ("UDP"): describes the procedures that will be implemented if potentially significant archeological deposits, human remains, or unanticipated effects to known historic properties are discovered during construction.

4.2. Orientation Training

Training for the treatment of historic properties will be part of the Orientation Training (which will also include other topics, such as safety, environmental monitoring, and community relations) that all personnel who will be engaged in construction in the field must complete before going in the field. The Orientation Training will be delivered by an instructor (an Eversource employee or an authorized contractor) who has completed the advanced historic properties training described under Supervisor Training below. The instructor will utilize a PowerPoint presentation that includes slides containing the following topics and information regarding the treatment of historic properties during construction:

- Introduction
 - This training is part of Eversource's commitment and obligation to protect historic properties during construction
 - All personnel have the responsibility to follow procedures put in place to protect historic properties and be mindful that potentially significant archeological deposits, human remains, or unanticipated effects to known historic properties may be discovered during construction
- Federal and State Historic Preservation Laws and Regulations
 - Section 106 of the National Historic Preservation Act of 1966, as amended (36 CFR 800)
 - requires federal agencies to take into account the effects of their undertakings on historic properties and establishes a consultation process involving federal, state, and local agencies, Native American tribes, interested individuals and organizations, and the general public to resolve adverse effects.
 - New Hampshire Revised Statutes Annotated (RSA) Title XIX, Chapter 227-C:9

- requires New Hampshire state agencies to cooperate with the New Hampshire Division of Historical Resources (“NHSHPO”) on all state licensed, assisted, or contracted projects, activities, or programs so that the division may determine the effect of such undertakings on historic resources
- Known Historic Properties within the SRP APE
 - Archaeological and historic architectural resources
 - Archaeological sites, pre-contact and post-contact
 - Historic architectural properties, e.g., individual buildings and structures, farmsteads, cemeteries, and districts
- Resolution of Adverse Effect
 - MOA/MOU identifies the actions and procedures that Eversource will undertake to avoid, minimize, or mitigate adverse effects to known historic properties
 - MOA/MOU may specify site controls or construction procedures that construction crews must implement to protect a particular historic property during construction
 - Monitoring Plan specifies the procedures and identifies persons responsible for monitoring construction and reporting progress
- Unanticipated Discoveries
 - Types of resources that could be encountered during construction, with examples of pre- and post-contact artifacts and features
 - Unanticipated Discovery Plan (“UDP”) identifies procedures that must be followed if potentially significant archeological deposits, human remains, or unanticipated effects to known historic properties are discovered during construction
 - Stop all work within 100 feet of the find
 - Notify the site supervisor or foreman
 - Supervisor notifies the cultural liaison
 - Cultural liaison dispatches an environmental monitor to inspect the site and notifies the Eversource Cultural Resource Specialist (“CRS”) who implements the remaining procedures of the UDP
- Confidentiality
 - The location of archaeological sites is sensitive information that is protected under state and federal laws
 - All Eversource construction personnel and contractors are expected keep confidential the location of any archaeological sites, burial sites, or reburials, as well as certain types of locational information for privately owned historic properties.
 - Contact Information

- Cultural liaison
- CRS

4.3. Supervisor Training

In addition to completing the Orientation Training, Eversource personnel and contractors who have a defined role in the aforementioned plans, including the Monitoring Plan and the UDP, must complete supervisor training. The Supervisor Training will be provided to, at a minimum, the cultural liaison, environmental monitors, tribal monitors, and qualified professional archaeologists and architectural historians as identified in the Monitoring Plan. The Supervisor Training will be conducted by the CRS or a cultural resource management contractor who meets the *Secretary of the Interior's Professional Qualifications Standards* (36 CFR 61) and applicable state qualifications standards. The training will be tailored to the role of the personnel and will provide specific information about the reporting requirements and procedures that must be followed to properly implement the plans.

The following general information will be covered for each personnel category to receive Supervisor Training:

Cultural Liaison – The responsibilities of the cultural liaison include supervising the personnel involved in the day-to-day construction monitoring and implementing the UDP if potentially significant archeological deposits, human remains, or unanticipated effects to known historic properties are discovered. The CRS will work one-on-one with the cultural liaison to establish the appropriate reporting procedures and ensure that the cultural liaison is fully aware of his or her responsibilities for implementing the plans, including the UDP and the Monitoring Plan.

Environmental Monitors – The responsibilities of the environmental monitors include ensuring that known historic properties are treated in the manner specified in the MOA/MOU, implementing initial measures to protect any unanticipated discoveries found during construction, and reporting to the cultural liaison on the progress of their monitoring. Their training will include information about known historic properties within the section of the Project for which they are responsible, any measures that must be implemented to protect those properties according to the MOA/MOU, and the proper materials and techniques for securing and protecting unanticipated discoveries.

Qualified Professional Archaeologist (“QPA”) and Qualified Architectural Historian (“QAH”) – Tribal monitors, the QPA, and the QAH who may have a role in monitoring construction at specific sites will be trained in the requirements of any treatment plans that may be in place for a specific site, as well as the provisions of the UDP and Monitoring Plan, as appropriate.

4.4. Training Schedule

The Orientation Training will commence in the period immediately before construction begins and continue to be held no less than weekly until all personnel initially engaged in construction have received the training. Thereafter, training will be conducted on an as-needed basis. The Supervisor Training for the personnel involved in day-to-day construction monitoring will be conducted before those personnel are deployed.

5. CURATION AND REPATRIATION PLAN

This Curation and Repatriation Plan (“CRP”) was prepared for the Seacoast Reliability Project (“SRP” or “Project”). The plan identifies the procedures that Eversource Energy (“Eversource”) and its contractors will follow for the curation and repatriation of artifacts, human remains, and for the associated documentation resulting from the Project.

The CRP is consistent with the following federal and state regulations and guidelines:

- Section 106 of the National Historic Preservation Act of 1966, as amended (“NHPA”, 36 CFR Part 800);
- Archaeological Resources Protection Act of 1979 (“ARPA”, 43 CFR Part 7);
- Native American Graves Protection and Repatriation Act (“NAGPRA”, 43 CFR Part 10);
- Advisory Council on Historic Preservation: *Policy Statement Regarding Treatment of Burial Sites, Human Remains, and Funerary Objects*, Advisory Council February 23, 2007);
- National Park Service: *Curation of Federally-Owned and Administered Archaeological Collections* (36 CFR 79);
- State of New Hampshire RSA Title XIX, Chapter 227-C: 8a-g, Discovery of Remains, etc.;
- State of New Hampshire RSA Title XXVI, Chapter 289, Cemeteries; and
- New Hampshire Division of Historical Resources (“NHSHPO”) *Standards and Guidelines for Archaeological Investigations in New Hampshire* [Section VIII, A, B] (2018) and *Curation Guidelines* (n.d.)¹¹.

5.1. Plan Integration

The CRP will operate in conjunction with several other plans that are designed to ensure that historic properties receive appropriate treatment and protection. The *Seacoast Reliability Project Memorandum of Agreement (“MOA”) with the U.S. Army Corps of Engineers (“USACE”) and the NHSHPO and/or Memorandum of Understanding (“MOU”) with the NHSHPO* describes measures that will be implemented to avoid, minimize, or mitigate adverse effects on known historic properties within the Project’s Area of Potential Effects (“APE”). The *Seacoast Reliability Project Unanticipated Discovery Plan (“UDP”)* describes the procedures that Eversource and its contractors will follow if potentially significant archeological deposits, human remains, or unanticipated effects to known historic properties are discovered during construction. The *Seacoast Reliability Project Historic Properties Monitoring Plan (“Monitoring Plan”)* describes the program that Eversource will implement to monitor construction and other activities that have the potential to impact historic properties. Personnel engaged in the construction of the Project will receive training in accordance with the *Seacoast Reliability Project Historic Properties Training Plan (“Training Plan”)*.

¹ NHSHPO’s curation guidelines are available online at <https://www.nh.gov/nhdhr/review/archaeology.htm>.

5.2. Personnel Roles and Responsibilities

The following Eversource personnel have supervisory roles in implementing the CRP during the Project. Contact information for the supervisory personnel is provided in the "List of Responsible Personnel" in Attachment A.

Cultural Resource Specialist ("CRS"): An individual meeting the *Secretary of the Interior's Professional Qualifications Standards* (36 CFR 61) and applicable state qualification standards who is responsible for implementing the MOA/MOU and the associated plans, including this CRP.

Qualified Museum Professional ("QMP"): An Individual who meets *The Secretary of the Interior's Professional Qualifications Standards* (36 CFR 61) for Archaeologists and the Museum Professional qualifications set forth in *Curation of Federally-Owned and Administered Archaeological Collections* (36 CFR 79).

Contact information for the individuals at federal and state agencies who have a role in the implementation of the CRP is provided in Attachment B.

5.3. Procedures for the Curation of Artifacts from Private Lands

Artifacts and associated documentation generated from excavations on private lands will be processed and packaged by the QMP in accordance with 36 CFR 79 regulations for the treatment of federally-owned collections and NESHPO's curation guidelines. The final disposition of the materials will be determined as follows:

1. All artifacts recovered from private land in New Hampshire belong to the private property owner as per NESHPO's *Standards and Guidelines for Archaeological Investigations in New Hampshire, Section VI.B*.
2. Ownership of the artifacts will be established using current assessor's data for the property(s) from which the artifacts were recovered.
3. When artifacts are recovered, Eversource will notify in writing by certified mail the owner of the property where the artifacts were recovered and inquire if the owner would like to keep the artifacts or donate them to the NESHPO.
 - a. If the property owner chooses to donate the artifacts to the NESHPO, Eversource will provide a written transfer-of-title from the landowner to the State of New Hampshire for signature by both parties.
 - b. If the property owner requests the artifacts be returned to him/her, the QMP will prepare the appropriate deaccession paperwork for Eversource to provide to the property owner for signature.
 - c. If the property owner does not respond to the artifact disposition inquiry within 45 days of receipt of the initial inquiry letter, a second letter will be sent by certified mail. If the property owner does not respond within 45 days of the receipt of the second letter, the artifacts will revert to the custody of the NESHPO.

4. For artifacts donated or not claimed by private property owners, the QMP will contact the State Archaeologist to request the deaccession and permanent curation of the remaining materials to NHSHPO's collections facility at 99 Airport Road in Concord. The request will include:
 - a. Number and type of archaeological artifacts present in the collection²
 - b. Total number of archival storage boxes
 - c. Total amount of associated documentation.
5. All original site and artifact documentation generated in the field and laboratory, including data forms, maps, photographs, and any documentation relevant to the ownership of the collections, will be included with the collection for permanent curation at the NHSHPO collections facility.
6. Once the disposition of the collections has been finalized, Eversource will arrange for delivery of the artifacts to individual landowners (as requested) and the remaining collection – including all original site and artifact documentation – to the NHSHPO collections facility.
7. Eversource is responsible for the permanent curation costs at the NHSHPO collections facility in accordance with NHSHPO's cost of \$300 per archival storage box or NHSHPO's permanent curation fees at the time of the collections transfer.
8. At Project construction and, as necessitated by unanticipated discoveries thereafter, Eversource will provide NHSHPO with a report summarizing the final disposition of all archaeological materials with associated transfer-of-title and deaccession

5.4. Procedures for the Re-interment of Human Remains from Non-Federal Lands

The re-interment of human remains on private lands is the responsibility of the State Archaeologist, and Eversource will adhere to the protocols in the UDP to include provisions for the temporary custody of the remains while their final disposition is being determined. If previously-unidentified human remains are found in an existing archaeological collection recovered from private land within

the Project, the QMP will immediately notify the State Archaeologist who is responsible for initiating the notification and consultation process detailed in the UDP to include arrangements for the temporary custody of the remains while their final disposition is being determined.

²The NHHPO curation facility will only accept artifacts recovered from defined archaeological sites. Artifacts collected from non-site contexts (e.g. materials collected from fill or functionally and temporally undifferentiated field scatter) will be disposed of in consultation with the State Archaeologist.

ATTACHMENT A: LIST OF RESPONSIBLE PERSONNEL

Cultural Resource Specialist (“CRS”)

TBD

Cultural Liaison

Personnel TBD

Environmental Monitors

Personnel TBD

Tribal Monitors

TBD, if necessary

Qualified Professional Archaeologist (“QPA”)

Personnel TBD

Qualified Professional Architectural Historian (“QAH”)

Personnel TBD

Qualified Museum Professional (“QMP”)

Personnel TBD

ATTACHMENT B: FEDERAL AND STATE AGENCY CONTACTS

Federal Agency Contacts

United States Army Corps of Engineers ("USACE")

New England District, Regulatory Division

Lindsey Lefebvre, Project Manager

696 Virginia Road Concord,

MA 01742-2751 (978) 318-8338

Lindsey.E.Lefebvre@usace.army.mil

New Hampshire State Contacts

Office of the Chief Medical Examiner ("OCME")

246 Pleasant Street, Suite 218

Concord, NH 03301-2598

Telephone: (603) 271-1235

State Historic Preservation Office (SHPO)

Tanya Krajcik

Deputy State Archaeologist

19 Pillsbury Street - 2nd floor

Concord, NH 03301-3570 (603)

271-6568

tanya.krajcik@dncr.nh.gov