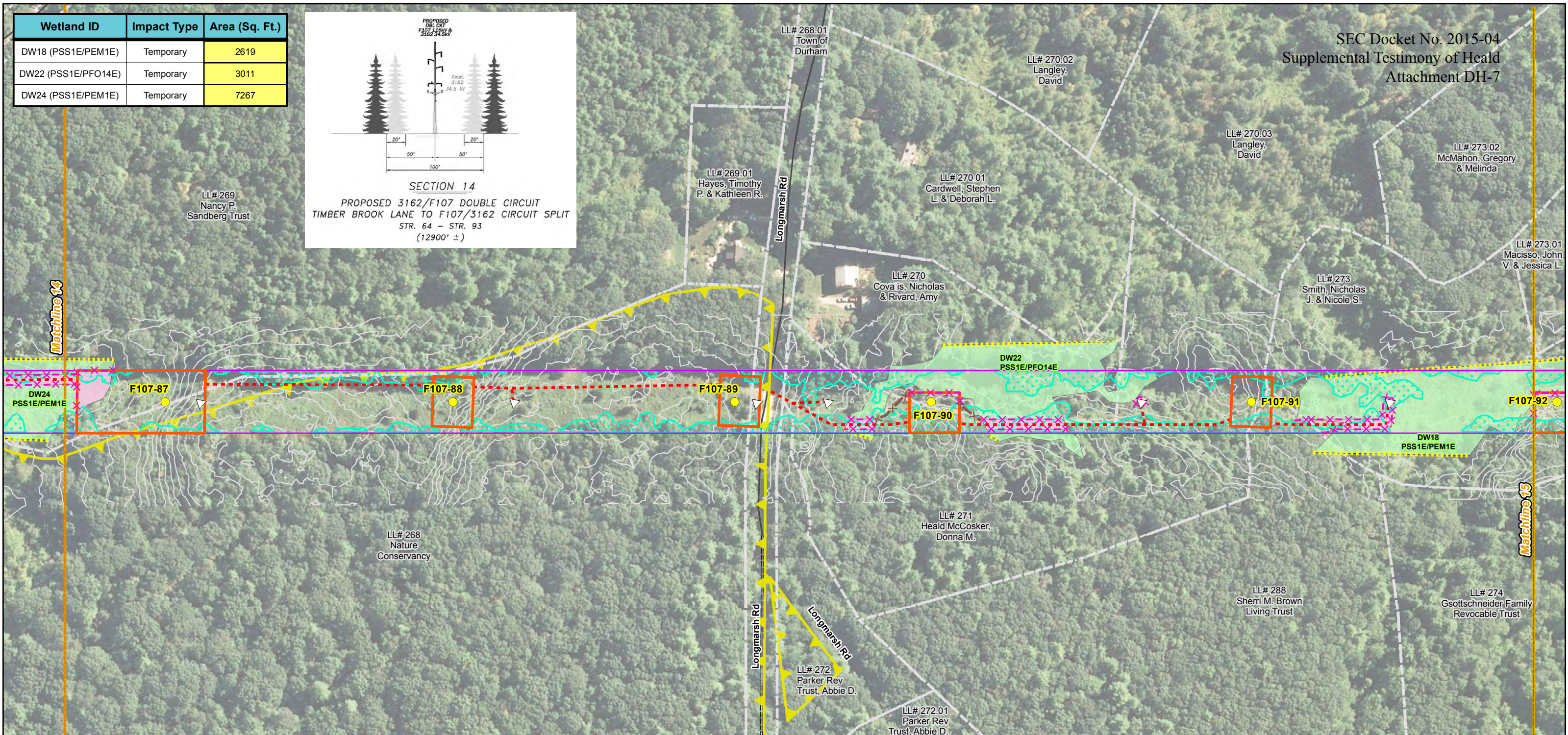
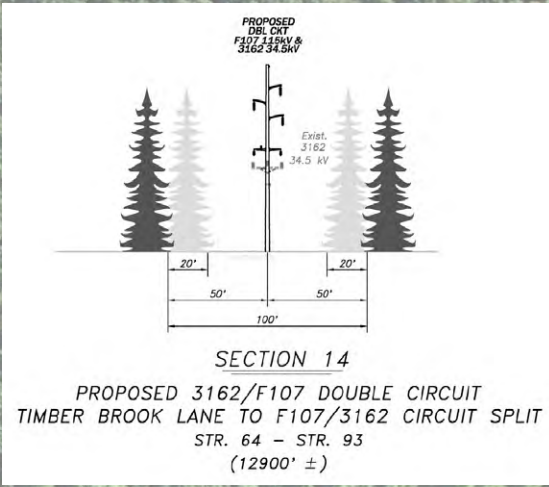
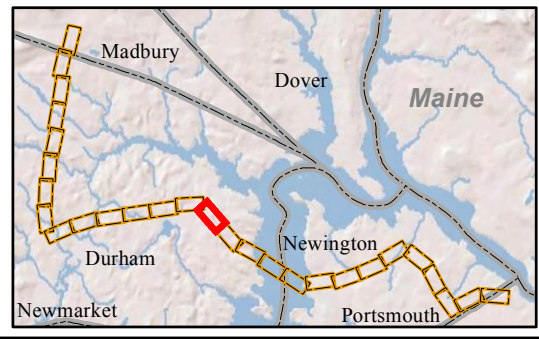
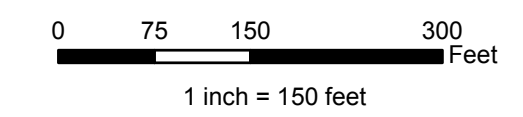


Wetland ID	Impact Type	Area (Sq. Ft.)
DW18 (PSS1E/PEM1E)	Temporary	2619
DW22 (PSS1E/PFO14E)	Temporary	3011
DW24 (PSS1E/PEM1E)	Temporary	7267



<p>Drawn By: athompson Date: 2/25/2016 Project No: 22860.003</p>	<ul style="list-style-type: none"> Town Boundary Approximate Parcel Boundary PSNH Fee Area Project Corridor Work Pad Roads Local Not Maintained Private State Railroad 	<ul style="list-style-type: none"> Existing Str (Remain) Existing Str (Removed/Modified) Structures Direct Embed Drilled Pier Relocated Distribution Access Roads Underground Cable Silt Curtain Silt Fence, Hay Bale, Erosion Control Mix Berm Straw Wattle 	<ul style="list-style-type: none"> Wetland Prime Wetland Wetland Extends Wetlands Impact Stream Centerline Stream Top of Bank Temporary Culvert Temporary Mat Bridge Historical Sites Designated River Buffer 250' Conservation Lands 100 Year Floodplain Steep Slope BMPs Tree Clearing Stream Buffer 2ft Contour 	<p>Service Layer Credits: Copyright © 2014 Esri, granit.edu.</p>
--	--	--	--	--



Seacoast Reliability Project

Environmental Maps

1/28/16