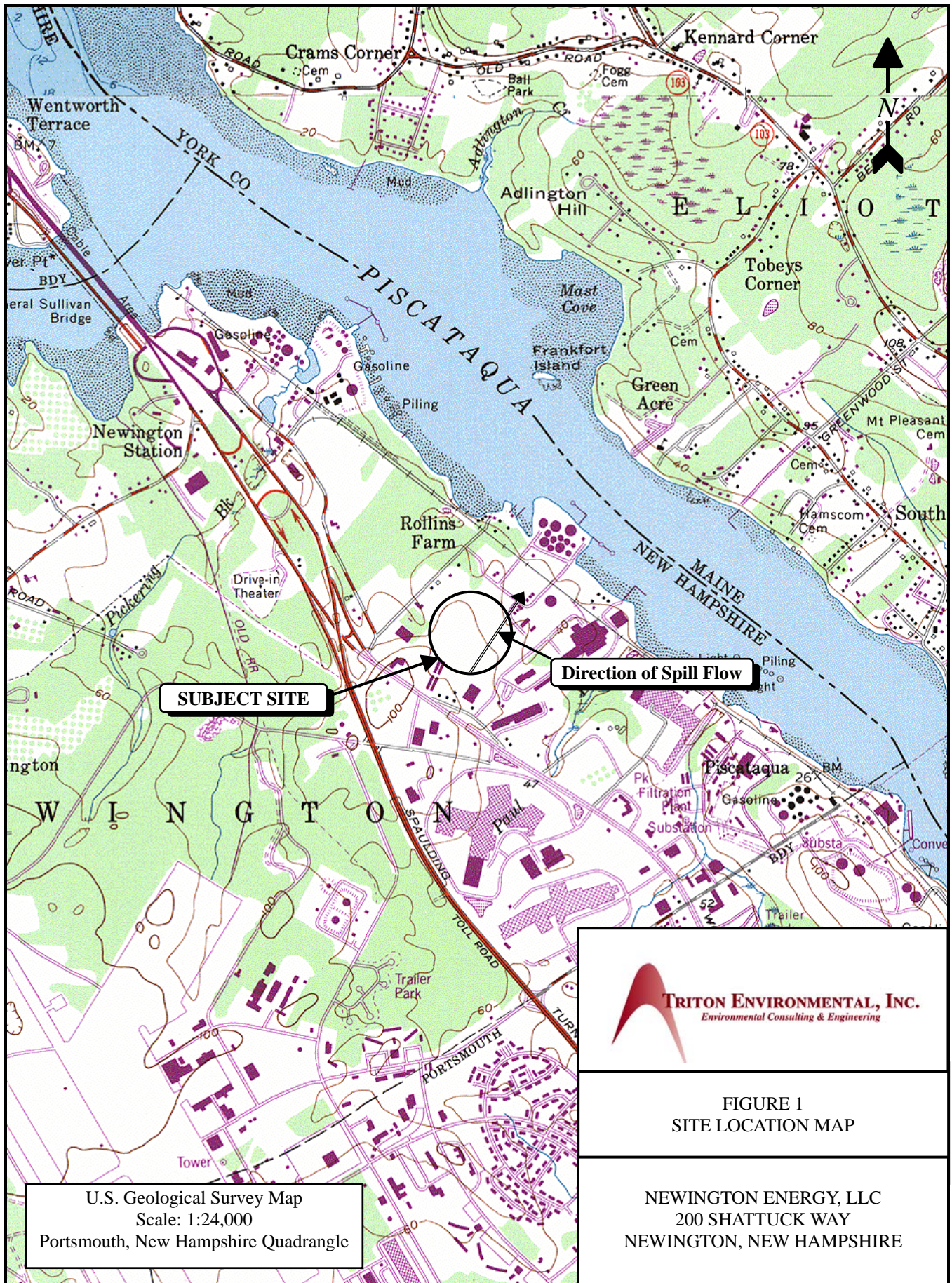


**Figure 1**

**Site Location Map**





**SUBJECT SITE**

**Direction of Spill Flow**



**FIGURE 1**  
**SITE LOCATION MAP**

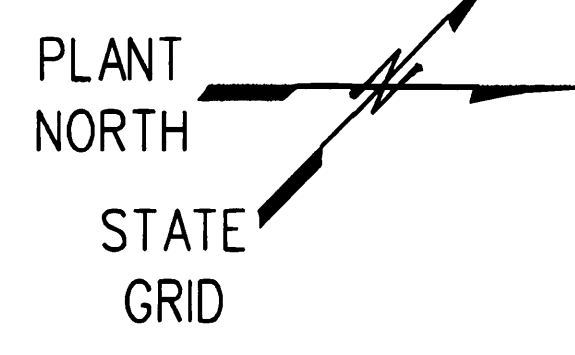
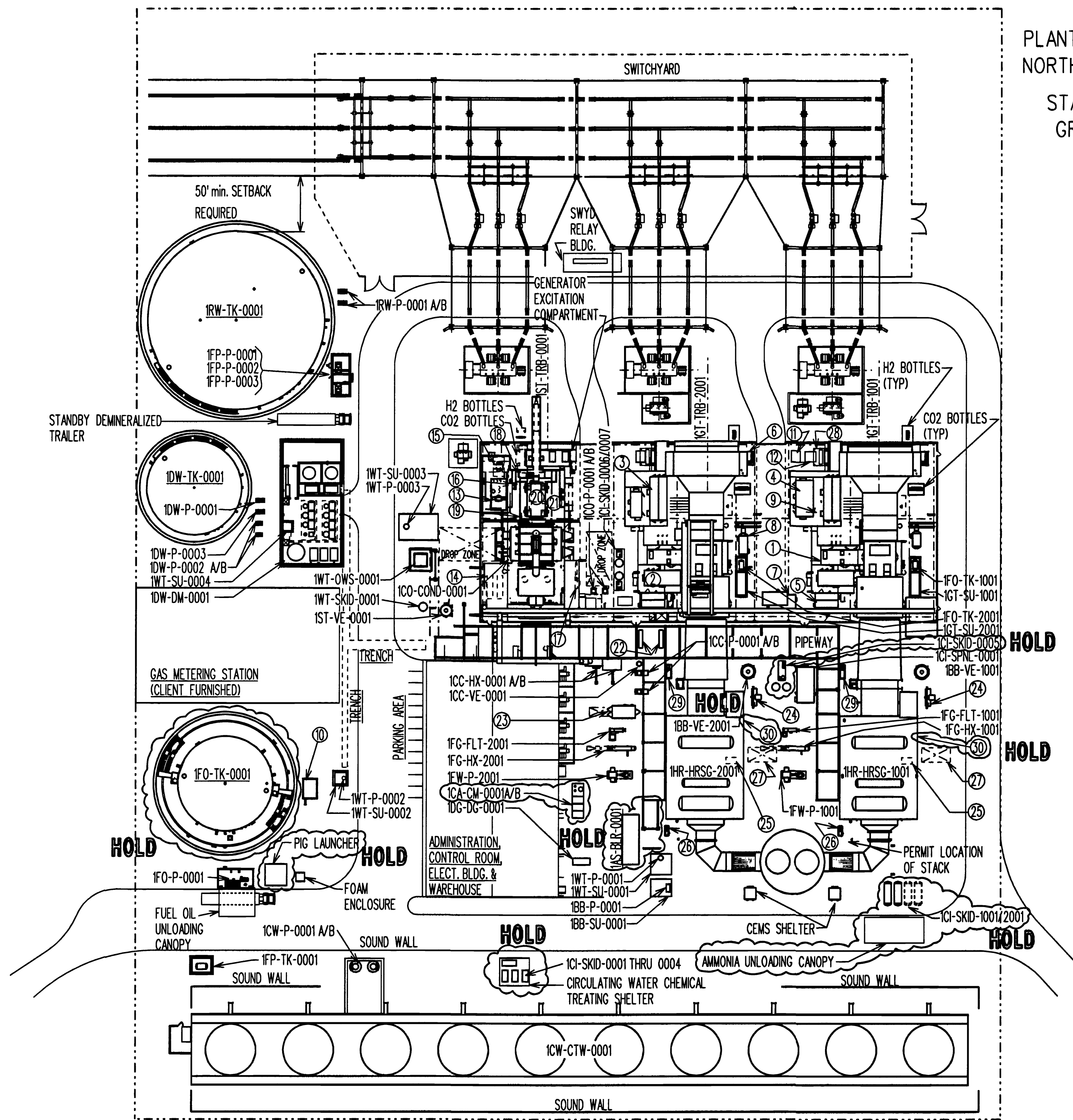
**NEWINGTON ENERGY, LLC**  
200 SHATTUCK WAY  
NEWINGTON, NEW HAMPSHIRE

U.S. Geological Survey Map  
Scale: 1:24,000  
Portsmouth, New Hampshire Quadrangle



**Figure 2**

**Facility Plot Plan**



**EQUIPMENT LIST**

1AS-BLR-0001	AUXILIARY BOILER	1FG-HX-1001	FUEL GAS HEATER
1BB-P-0001A/B	BLOWDOWN WATER SUMP PUMPS	1FG-HX-2001	FUEL GAS HEATER
1BB-SU-0001	BLOWDOWN SUMP	1FO-P-0001	FUEL OIL UNLOADING PUMP
1BB-VE-1001	ATMOSPHERIC BLOWDOWN DRUM	1FO-TK-0001	FUEL OIL STORAGE TANK
1BB-VE-2001	ATMOSPHERIC BLOWDOWN DRUM	1FO-TK-2001	CTG FALSE START DRAIN OIL TANK
1CA-CM-0001 A/B	PLANT/INSTRUMENT AIR COMPRESSOR SKID	1FP-P-0001	FIRE WATER PUMP - DIESEL
1CC-HX-0001 A/B	CLOSED LOOP COOLING WATER EXCHANGERS	1FP-P-0002	FIRE WATER PUMP - DIESEL
1CC-P-0001 A/B	CLOSED LOOP COOLING WATER PUMPS	1FP-P-0003	FIRE WATER JOCKEY PUMP
1CC-VE-0001	CLOSED LOOP COOLING WATER BLADDER TANK	1FP-TK-0001	FOAM TANK
1CI-SKID-0001	SULFURIC ACID SKID	1FW-P-1001	HP/IP FEEDWATER PUMPS
1CI-SKID-0002	BIOCIDE SKID	1FW-P-2001	HP/IP FEEDWATER PUMPS
1CI-SKID-0003	CORROSION INHIBITOR SKID	1GT-SU-1001	CTG WASH WATER DRAIN SUMP
1CI-SKID-0004	SCALE INHIBITOR SKID	1GT-SU-2001	CTG WASH WATER DRAIN SUMP
1CI-SKID-0005	HP / IP PHOSPHATE SKID	1GT-TRB-1001	GAS TURBINE GENERATOR
1CI-SKID-0006	AMINE SKID	1GT-TRB-2001	GAS TURBINE GENERATOR
1CI-SKID-0007	OXYGEN SCAVANGER SKID	1HR-BLR-1001A/B	COOLING AIR BLOWER SKID
1CI-SKID-1001/2001	ANHYDROUS AMMONIA STORAGE AND VAPORIZATION SKIDS	1HR-BLR-2001A/B	COOLING AIR BLOWER SKID
1CI-SPNL-0001	WATER / STEAM SAMPLING	1HR-HRSG-1001	HEAT RECOVERY STEAM GENERATOR
1CO-COND-0001	SURFACE CONDENSER	1HR-HRSG-2001	HEAT RECOVERY STEAM GENERATOR
1CO-P-0001 A/B	CONDENSATE PUMPS	1RW-P-0001 A/B	RAW WATER PUMPS
1CW-CTW-0001	COOLING TOWER	1RW-TK-0001	RAW WATER STORAGE TANK
1CW-P-0001 A/B	MAIN CIRCULATING WATER PUMPS	1ST-TRB-0001	STEAM TURBINE GENERATOR
1DG-DG-0001	EMERGENCY GENERATOR	1ST-VE-0001	ATMOSPHERIC DRAIN TANK
1DW-DM-0001	DEMNERIALIZED WATER TREATMENT SYSTEM	1WT-OWS-0001	OIL/WATER SEPARATOR
1DW-P-0001	DEMNERIALIZED WATER TRANSFER PUMP	1WT-P-0001	OILY WATER SUMP PUMP
1DW-P-0002 A/B	DEMNERIALIZED WATER PUMPS	1WT-P-0002	OILY WATER SUMP PUMP
1DW-P-0003	DEMNERIALIZED WATER TRANSFER PUMP	1WT-P-0003	CLEAN WATER SUMP PUMP
1DW-TK-0001	DEMNERIALIZED WATER STORAGE TANK	1WT-P-0004	DEMNERIALIZED WATER PUMP
1FG-FLT-1001	FUEL GAS FILTER SEPARATOR	1WT-SKID-0001	SANITARY LIFT STATION
1FG-FLT-2001	FUEL GAS FILTER SEPARATOR	1WT-SU-0001	OILY WATER SUMP - GTG/STG
		1WT-SU-0002	OILY WATER SUMP - FUEL OIL
		1WT-SU-0003	CLEAN WATER SUMP
		1WT-SU-0004	DEMNERIALIZED AREA SUMP

**GE 7FA EQUIPMENT/SKIDS**

- ① ACCESSORY MODULE
- ② LIQUID FUEL/ATOMIZING AIR MODULE
- ③ PACKAGED ELECTRIC ELECTRONIC CONTROL CENTER
- ④ LCI/EX COMPARTMENT
- ⑤ WATER INJECTION SKID
- ⑥ AIR PROCESSING SKID
- ⑦ WATER WASH SKID
- ⑧ CO2 FIRE PROTECTION SKID
- ⑨ LCI/HEAT EXCHANGER
- ⑩ FUEL FORWARDING SKID-PUMPS
- ⑪ EXCITATION PPT TRANSFORMER
- ⑫ DC LINK REACTOR
- ⑬ FUEL FORWARDING SKID-METERING
- ⑭ FUEL FORWARDING SKID-HEATERS

**STG COMPONENTS**

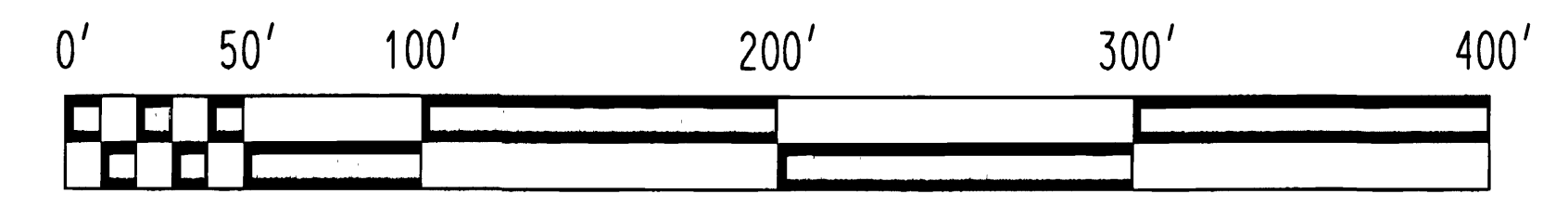
- ⑬ LUBE OIL CONSOLE
- ⑭ CONDENSATE VACUUM
- ⑮ HYDRAULIC POWER UNIT
- ⑯ SEAL OIL SKID
- ⑰ GLAND CONDENSER
- ⑱ LIQUID LEVEL DETECTOR
- ⑲ FLOAT TRAP
- ⑳ H2 / CO2 MANIFOLD
- ㉑ HYDROGEN CABINET

**HRSG COMPONENTS**

- ㉔ BURNER MANAGEMENT SKID
- ㉕ DUCT BURNER COOLING AIR FANS:  
1HR-BLR-1001 A / B  
1HR-BLR-2001 A / B
- ㉖ RECIRCULATION PUMPS:  
1HR-P-1001  
1HR-P-2001
- ㉗ SCREEN BASKET DROP AREA
- ㉘ AMMONIA SKID

**MISCELLANEOUS**

- ㉚ GEN MAIN BREAKER
- ㉛ HEAT TRACING PANEL & XFMR



REDUCED PRINT SCALE

REV.	DATE	REVISION DESCRIPTION	DRWN	LAYO	CIVIL	ENGM	PROJ	REV.	DATE	REVISION DESCRIPTION	DRWN	LAYO	CIVIL	ENGM	PROJ	DWG.NO.	REFERENCE DRAWINGS
			CHK.	MECH	ELEC						CHK.	MECH	ELEC				
1	8/01/00	ISSUED APPROVED FOR DESIGN	S.L.	J.A.				R.D.									
2	12/26/00	APPROVED FOR CONSTRUCTION	J.O.														

**DUKE/FLUOR DANIEL**

DRAWN BY: M. LOWRY  
 CHECKED BY: J. LOUTHIER  
 LAYOUT APPROVAL: J. ANTONOVICH  
 MECHANICAL APPROVAL: [Signature]  
 CIVIL APPROVAL: [Signature]  
 ELECTRICAL APPROVAL: [Signature]  
 ENGINEERING MANAGER: P. DAWKINS  
 PROJECT DIRECTOR: W. ASTL

**NEWINGTON ENERGY, LLC**  
NEWINGTON ENERGY

PLOT PLAN

NOTICE: THIS DRAWING HAS NOT BEEN PUBLISHED AND IS THE SOLE PROPERTY OF DUKE/FLUOR DANIEL AND IS LENT TO THE BORROWER FOR THEIR CONFIDENTIAL USE ONLY, AND IN CONSIDERATION OF THE LOAN OF THIS DRAWING, THE BORROWER PROMISES AND AGREES TO RETURN IT UPON REQUEST AND AGREES THAT IT SHALL NOT BE REPRODUCED, COPIED, LENT OR OTHERWISE DISPOSED OF DIRECTLY OR INDIRECTLY, NOR USED FOR ANY PURPOSE OTHER THAN FOR WHICH IT IS FURNISHED.

SCALE: 1"=50'  
DRAWING NUMBER: 427000-0-PP-5-1  
REV. 2

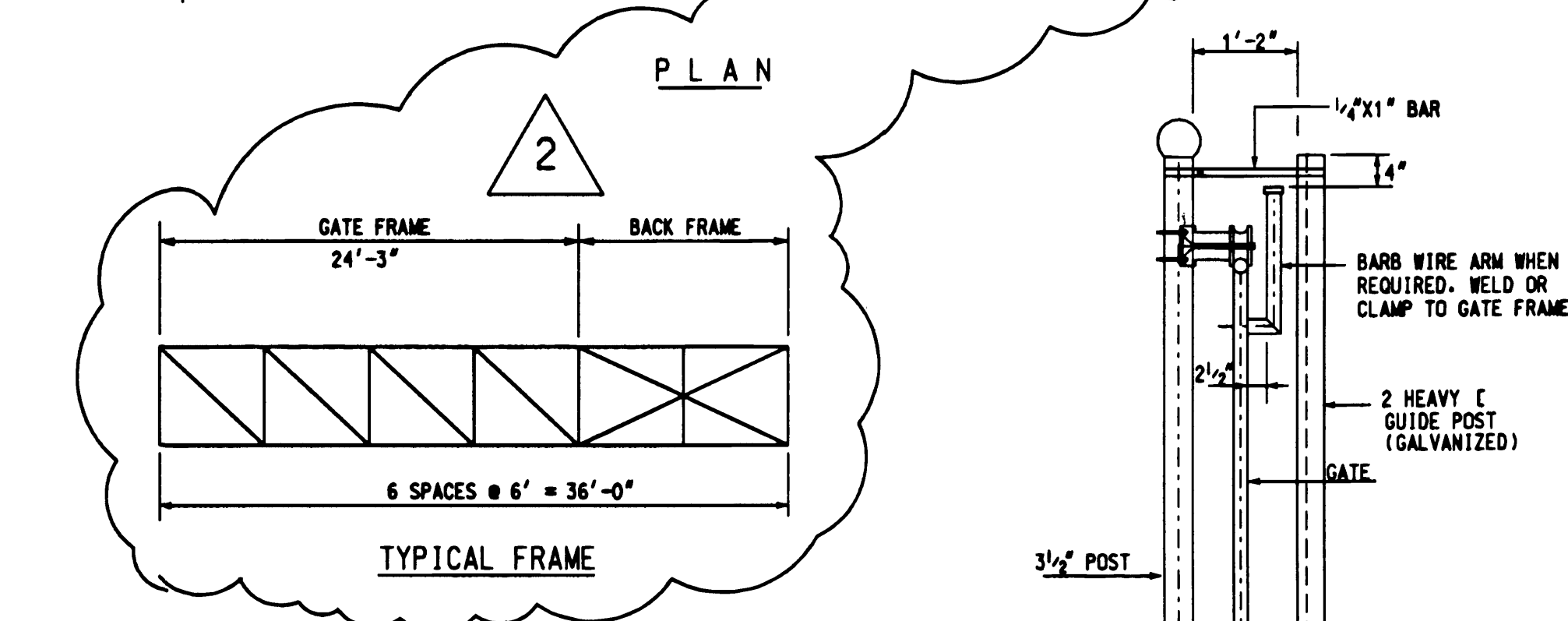
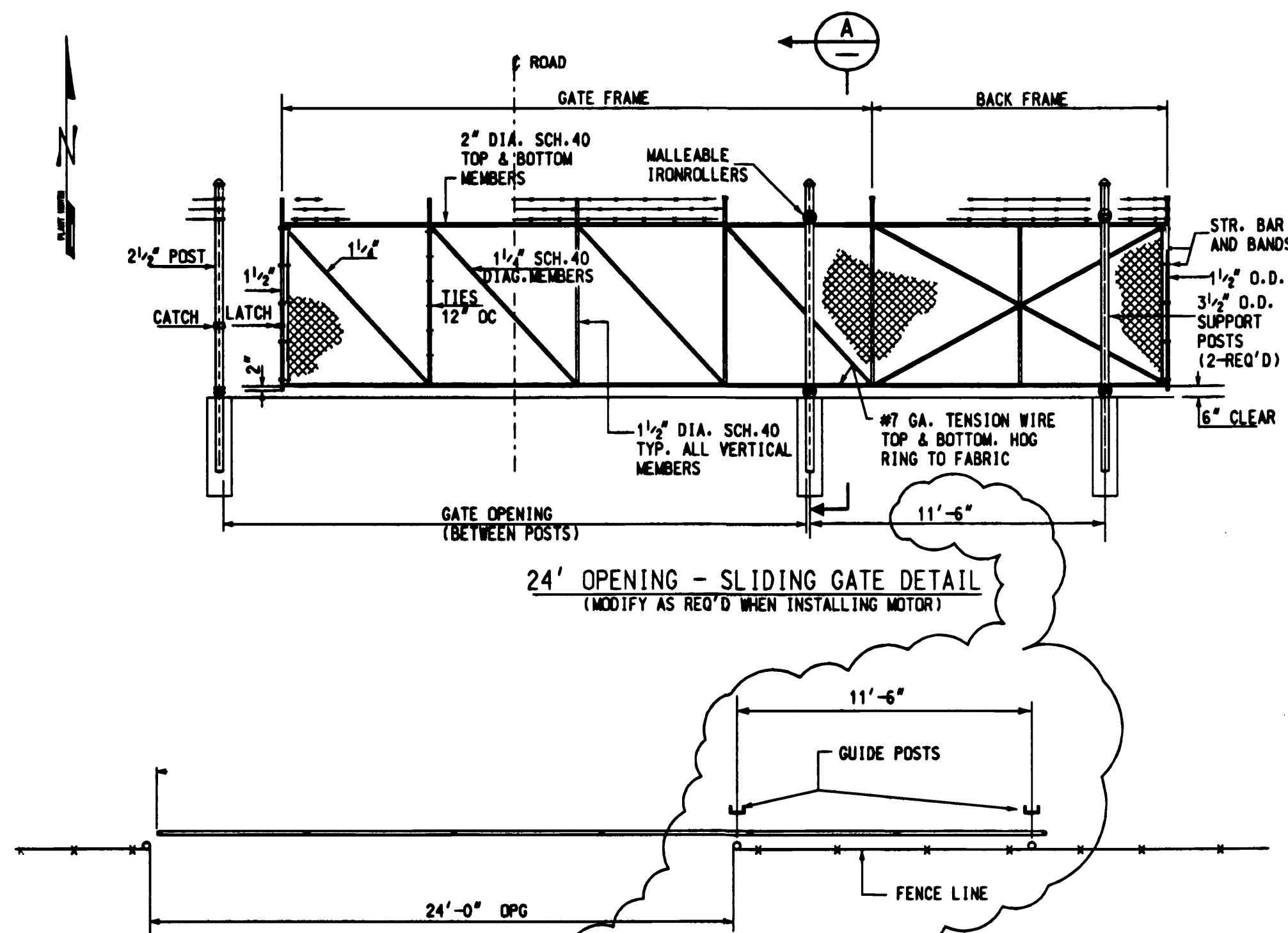
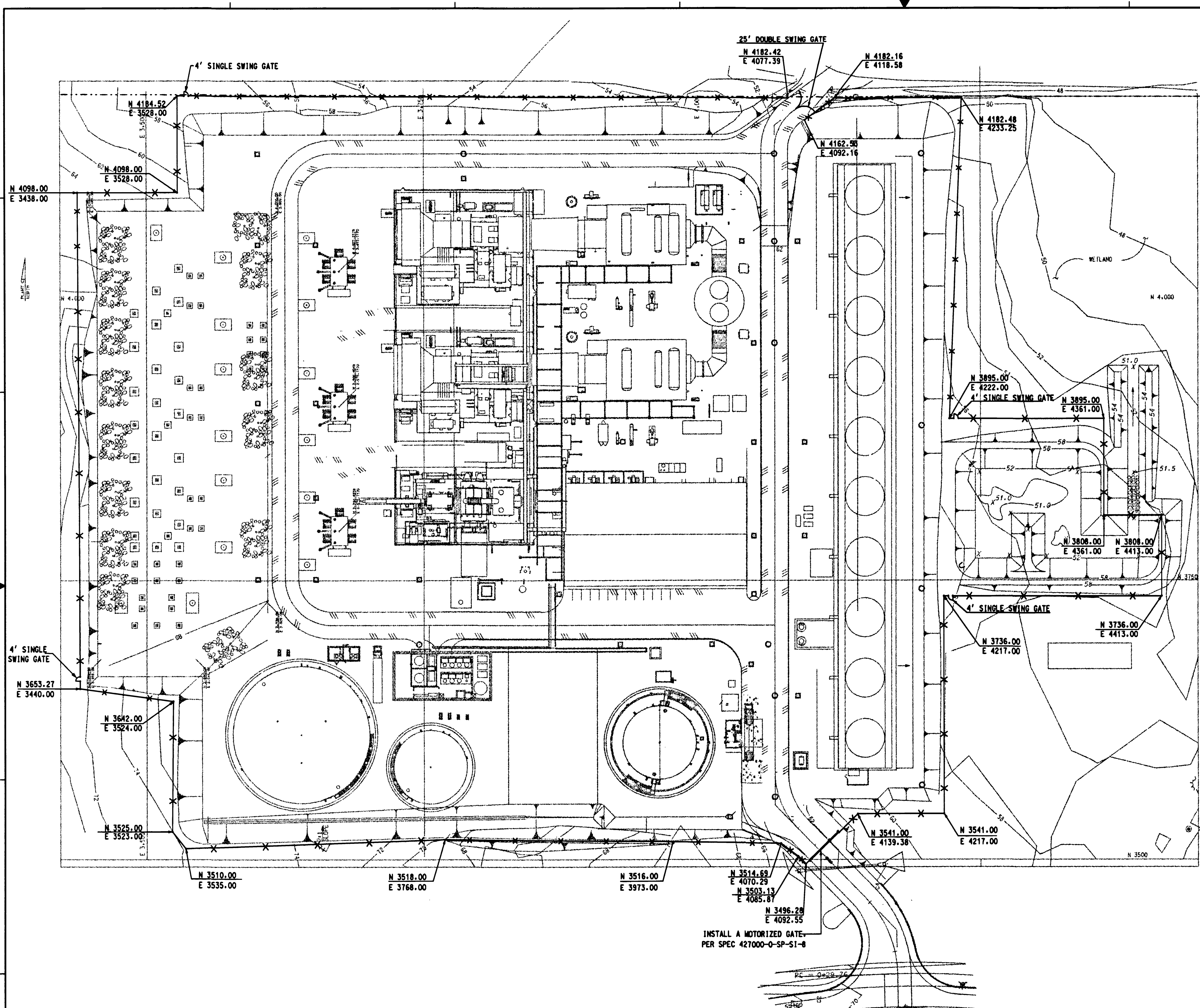
\*DATE\*TIME\* MANUAL CHANGES MADE - YES  NO  DWG. FILE UPDATED - YES  NO  MODEL UPDATED - YES  NO

DIST. CODE 051 WRK. PKG. CADD. FILE No. CONTRACT PKG. F:\Engineering\Layout\Plot Plan\Current\00-pp-5-1-2.dgn

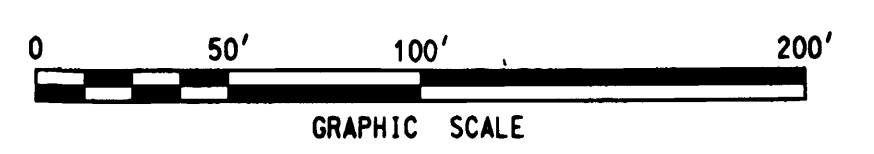


**Figure 3**

**Facility General Layout &  
Site Evacuation Map (Exits/Rally Points - Muster Areas)**



NOTE:  
FOR CHAIN LINK FENCE SPECIFICATION  
SEE SPEC. 427000-0-SP-51-8



REV.	DATE	REVISION DESCRIPTION	DRWN	LAYO	CIVL	ENGM	CHK.	MECH	ELEC	PROJ
0	2/8/01	ISSUED FOR REVIEW & APPROVAL	HS	AQ						
1	3/27/01	APPROVED FOR CONSTRUCTION	HS	AQ	SHY	RPD				
2	3/28/01	REVISED SLIDING GATE DETAIL	HS	AQ	SHY	RPD				

REV.	DATE	REVISION DESCRIPTION	DRWN	LAYO	CIVL	ENGM	CHK.	MECH	ELEC	PROJ

DWG. NO.	REFERENCE DRAWINGS

**DUKE/FLUOR DANIEL**

NOTICE: THIS DRAWING HAS NOT BEEN PUBLISHED AND IS THE SOLE PROPERTY OF DUKE/FLUOR DANIEL AND IS LENT TO THE BORROWER FOR THEIR CONFIDENTIAL USE ONLY, AND IN CONSIDERATION OF THE LOAN OF THIS DRAWING, THE BORROWER PROMISES AND AGREES TO RETURN IT UPON REQUEST AND AGREES THAT IT SHALL NOT BE REPRODUCED, COPIED, LENT OR OTHERWISE DISPOSED OF DIRECTLY OR INDIRECTLY, NOR USED FOR ANY PURPOSE OTHER THAN FOR WHICH IT IS FURNISHED.

DESIGNED BY	DATE	INITIALS/DATE
H. SARMENTO	HS 2/8/01	
CHECKED BY	DATE	INITIALS/DATE
A. QUINONES	AQ 2/8/01	
LAYOUT APPROVAL	DATE	INITIALS/DATE
MECHANICAL APPROVAL	DATE	INITIALS/DATE
CIVIL APPROVAL	DATE	INITIALS/DATE
S. YAMANOHA	SHY 2/8/01	
ELECTRICAL APPROVAL	DATE	INITIALS/DATE
ENGINEERING MANAGER	DATE	INITIALS/DATE
P. DAWKINS	PD 2/8/01	
PROJECT DIRECTOR	DATE	INITIALS/DATE

**NEWINGTON ENERGY, LLC**  
**NEWINGTON ENERGY**

**FENCING PLAN**

SCALE: 1"=50'  
DRAWING NUMBER: 427000 0-CV-0-FE-11

REV.
2

Plot User: 08-MAR-2001 12:55

\*DATE\*TIME\* MANUAL CHANGES MADE - YES  NO  DWG. FILE UPDATED - YES  NO  MODEL UPDATED - YES  NO  MODEL NAME:

CONTRACT PKG. CADD FILE No. CV0607.DWG. WKPK. PKG. 083 DIST. CODE 083

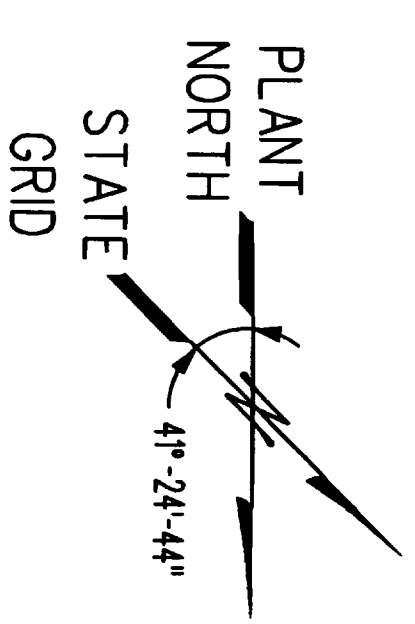
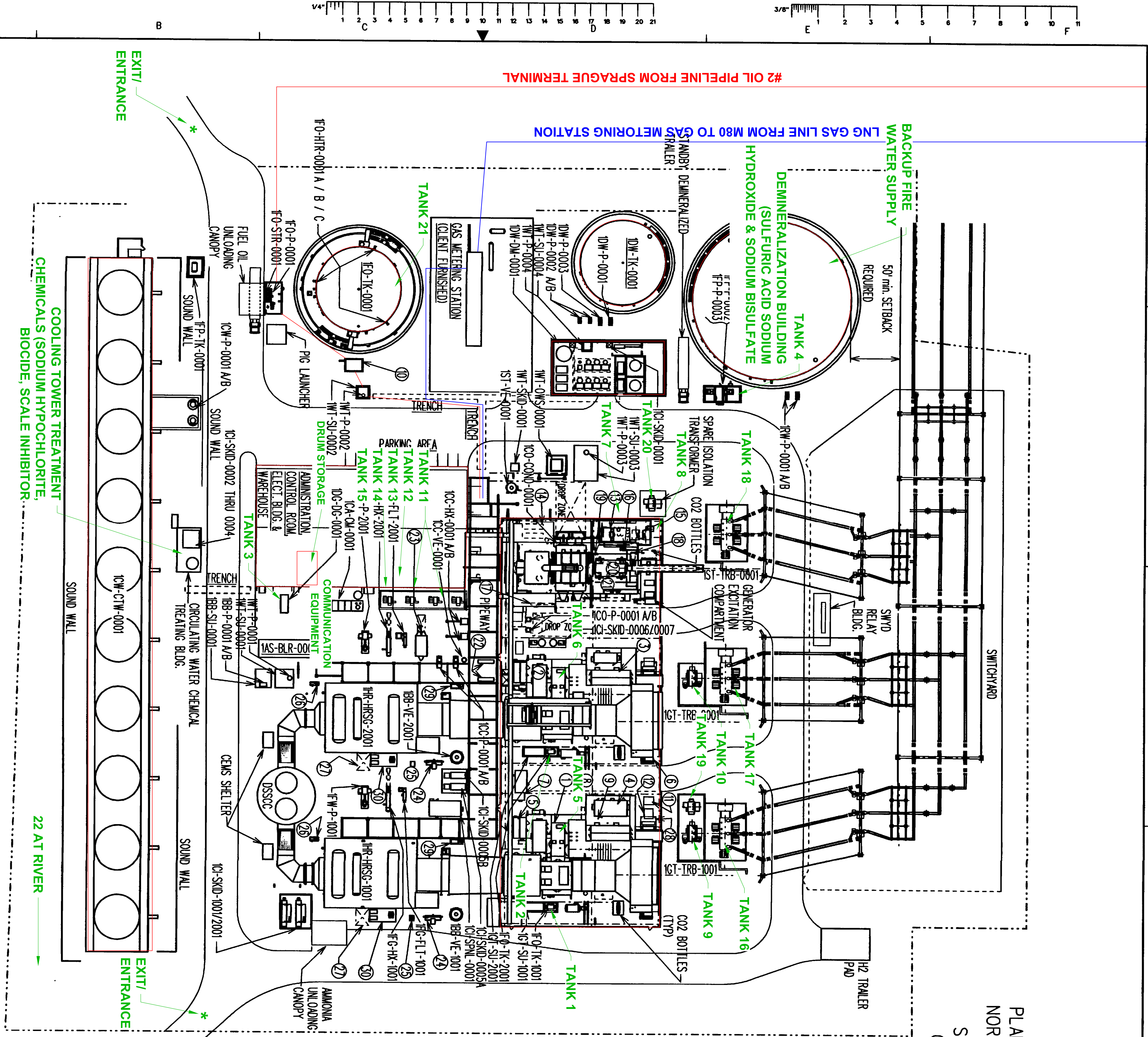
n:\pds\civil\dwgs\vaughn\grading\cv0fe11.dwg



**Figure 4**

**Tank Locations and Containment**





TANK No.	OIL TYPE	STORAGE CAPACITY (GALLONS)	CONTAINMENT CAPACITY (GALLONS)
3	No. 2 FUEL OIL	425	435
4	No. 2 FUEL OIL	350	350
21	LOW SULFUR DIESEL FUEL	939,451	1,118,912
	LUBE OIL	55-1,100	55-1,100

\* RESPONSE PERSONNEL AND RESPONSE EQUIPMENT INGRESS/EGRESS ALL TRANSPORTATION ROUTES FROM OLD DOVER ROAD ALSO SERVES AS EVACUATION ROUTE

**EQUIPMENT LIST**

1A5-BLR-0001	AUXILIARY BOILER	FC-GK-001	FUEL GAS HEATER
BB-P-000A/B	BLOWDOWN WATER SUMP PUMPS	FC-GK-2001	FUEL GAS HEATER
BB-SU-0001	BLOWDOWN SUMP	F0-P-001	FUEL OIL UNLOADING PUMP
BB-VE-001	ATMOSPHERIC BLOWDOWN DRAIN	F0-SIR-0001	FUEL OIL UNLOADING SUCTION STRAINER
BB-VE-2001	ATMOSPHERIC BLOWDOWN DRAIN	F0-TK-0001	FUEL OIL STORAGE TANK
ICA-QM-0001	PLANT/INSTRUMENT AIR COMPRESSOR SKID	F0-TK-2001	GIG FALSE START DRAIN OIL TANK
ICC-P-0001 A/B	CLOSED LOOP COOLING WATER EXCHANGERS	F0-TK-001	GIG FALSE START DRAIN OIL TANK
ICC-P-0001 A/B	CLOSED LOOP COOLING WATER PUMPS	F0-TK-2001	GIG FALSE START DRAIN OIL TANK
ICC-VE-0001	CLOSED LOOP COOLING WATER BLADDER TANK	FP-P-0001	FIRE WATER PUMP - DIESEL
ICC-SND-0001	SULFURIC ACID SNO	FP-P-0002	FIRE WATER PUMP - DIESEL
ICC-SND-0002	BIODIE SKID	FP-P-0003	FIRE WATER JOCKEY PUMP
ICC-SND-0003	CORROSION INHIBITOR SKID	FP-TK-0001	FOAM TANK
ICC-SND-0004	SCALE INHIBITOR SKID	FW-P-1001	HP/P BOILER FEEDWATER PUMP
ICC-SND-0005A	HP/P PHOSPHATE SKID	FW-P-2001	HP/P BOILER FEEDWATER PUMP
ICC-SND-0005B	HP/P PHOSPHATE SKID	I01-SU-0001	GIG WASH WATER DRAIN SUMP
ICC-SND-0006	P/P/P PHOSPHATE SKID	I01-SU-2001	GIG WASH WATER DRAIN SUMP
ICC-SND-0007	AMINE SKID	I01-TB-0001	GIG TURBINE GENERATOR
ICC-SND-0007/2001	OXYGEN SCRAMBLER SKID	I01-TB-2001	GAS TURBINE GENERATOR
ICC-SPNL-0001	ANTHRACENE AMMONIA STORAGE AND VAPORIZATION SNO	HR-HRSG-001	HEAT RECOVERY STEAM GENERATOR
ICC-CO-0001	WATER / STEAM SAMPLING SURFACE CONDENSER	HR-HRSG-2001	HEAT RECOVERY STEAM GENERATOR
ICC-P-0001 A/B	VACUUM CONDENSATE PUMPS	RW-P-0001 A/B	RAW WATER PUMPS
ICC-P-0001 A/B	COOLING TOWER	RW-TK-0001	RAW WATER STORAGE TANK
ICC-P-0001 A/B	MAN CIRCULATING WATER PUMPS	ST-TB-0001	STEAM TURBINE GENERATOR
ICC-VE-0001	COMMON STACK	ST-VE-0001	ATMOSPHERIC DRAIN TANK
ICC-VE-0001	EMERGENCY GENERATOR	WT-OWS-0001	OIL/WATER SEPARATOR
DW-DW-0001	DEMINEURALIZED WATER TREATMENT SYSTEM	WT-P-0001	OILY WATER SUMP PUMP - FTG/STG
DW-P-0001	DEMINEURALIZED WATER TRANSFER PUMP	WT-P-0002	OILY WATER SUMP PUMP - FUEL OIL
DW-P-0002 A/B	DEMINEURALIZED WATER TRANSFER PUMPS	WT-P-0003	CLEAN WATER SUMP PUMP
DW-P-0003	DEMINEURALIZED WATER TRANSFER PUMP	WT-P-0004	DEMAN AREA SUMP PUMP
DW-TK-0001	DEMINEURALIZED WATER STORAGE TANK	WT-SKD-0001	SANITARY LEFT STATION
FC-GT-001	FUEL GAS FILTER / SEPARATOR	WT-SU-0001	OILY WATER SUMP - FTG/STG
FC-GT-2001	FUEL GAS FILTER / SEPARATOR	WT-SU-0002	OILY WATER SUMP - FUEL OIL
		WT-SU-0003	CLEAN WATER SUMP
		WT-SU-0004	DEMINEURALIZED AREA SUMP

**GE 7FA EQUIPMENT/SKIDS**

- ACCESSORY MODULE
- LIQUID FUEL/AUXILIARY AIR MODULE
- PACKAGED ELECTRIC ELECTRONIC CONTROL CENTER
- LOVEY COMPARTMENT
- WATER INJECTION SKID
- AIR PROCESSING SKID
- WATER WASH SKID
- CO2 FINE PROTECTION SKID
- LOHEAT EXCHANGER
- FUEL FORWARDING SKID-PUMPS
- EXCITATION PPT TRANSFORMER
- DC LINK REACTOR
- FUEL FORWARDING SKID-HEATING
- FUEL FORWARDING SKID-HEATERS

**STG COMPONENTS**

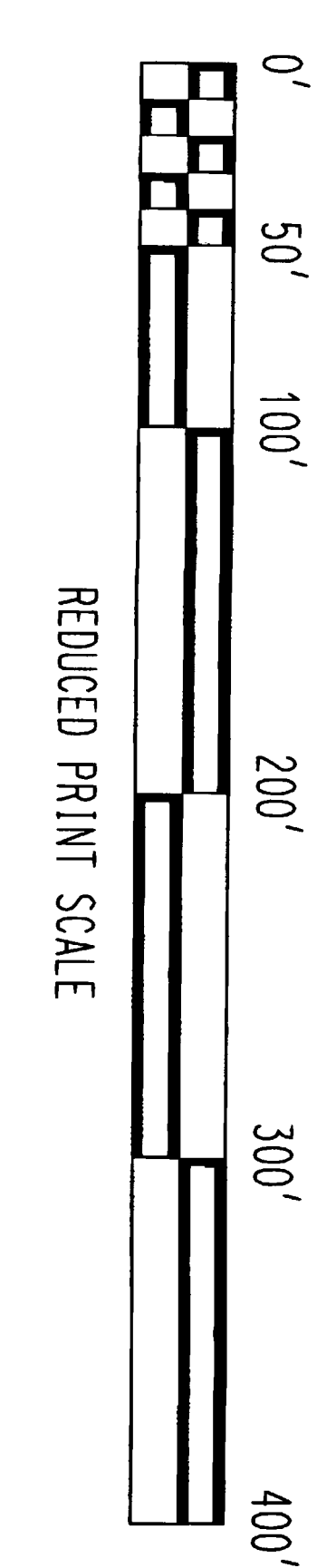
- LUBE OIL CONSOLE
- CONDENSATE VACUUM
- HYDRAULIC POWER UNIT
- STEAL OIL SKID
- GLAND CONDENSER
- LIQUID LEVEL DETECTOR
- FLOAT TRAP
- H2 / CO2 MANIFOLD
- HYDROGEN CABINET

**HRSG COMPONENTS**

- BURNER MANAGEMENT SKID
- DUCT BURNER COOLING AIR FANS:
- HR-BLR-000 A / B
- HR-BLR-2001 A / B
- RECIRCULATION PUMPS:
- HR-P-001
- HR-P-2001
- SCREEN BASKET DROP AREA
- AMMONIA SKID

**MISCELLANEOUS**

- GEN MAIN BREAKER
- HEAT TRACING PANEL & XEAR



REV.	DATE	REVISION DESCRIPTION
1	8/01/00	ISSUED APPROVED FOR DESIGN
2	12/28/00	APPROVED FOR CONSTRUCTION
3	11/17/01	APPROVED FOR CONSTRUCTION

DESIGNED BY	CHECKED BY	DATE	REVISION DESCRIPTION
...	...	...	...

DESIGNED BY	CHECKED BY	DATE	REVISION DESCRIPTION
...	...	...	...

**DUKE/FLUOR DANIEL**

NEWINGTON ENERGY, LLC  
NEWINGTON ENERGY

PLANT NORTH STATE GRID  
41°-24'-44"

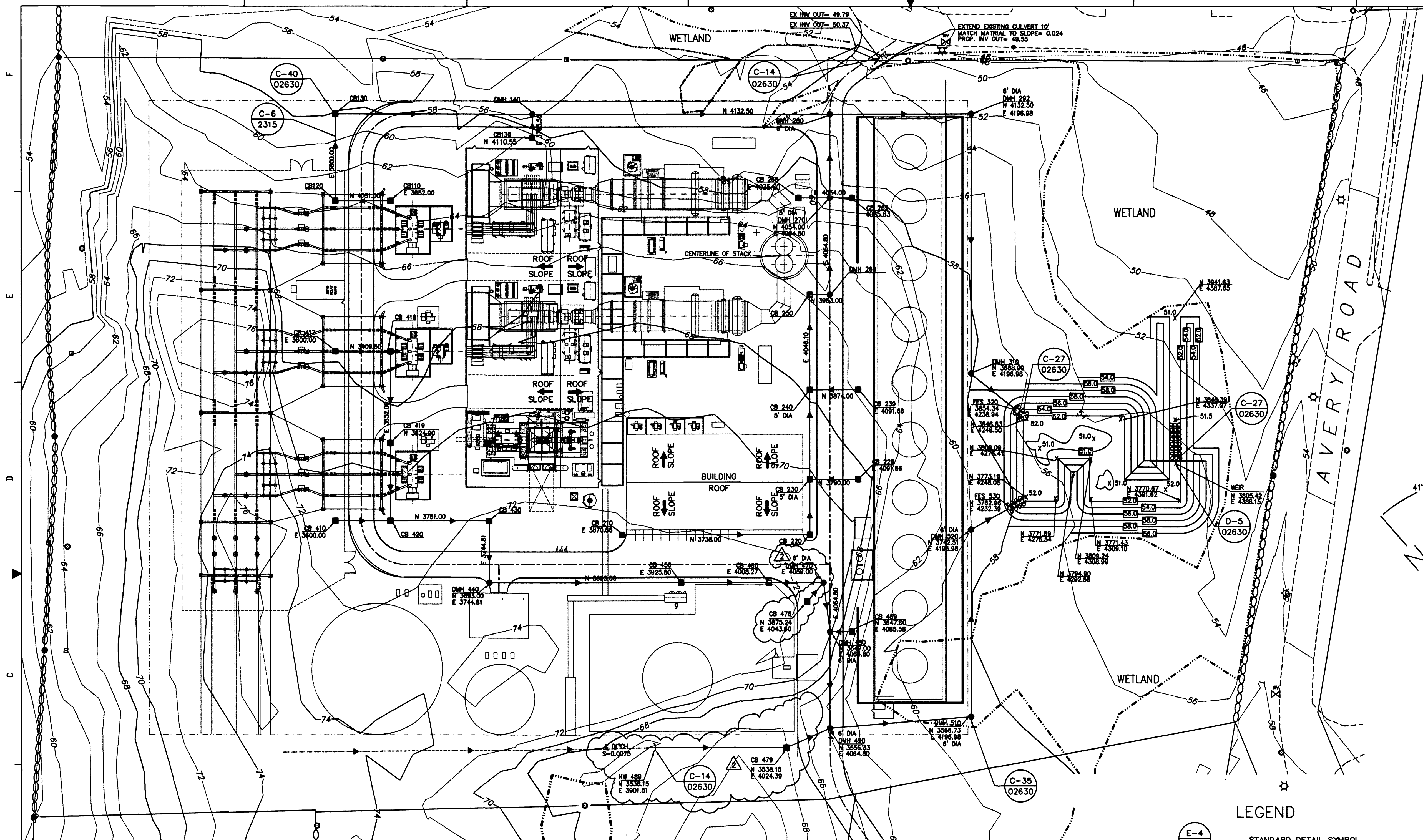


**Figure 5**

**Site Drainage Map**

DRAINAGE SCHEDULE

FROM STRUCTURE	RIM ELEV	INVERT OUT	TO STRUCTURE	INVERT (IN/FT)	INVERT (FT)	SLOPE	PIPE SIZE
CB417	65.60	62.10	CB418	61.84	52	0.005	12" RCP
CB418	65.60	61.84	CB419	61.41	86	0.005	15" RCP
CB419	65.70	61.41	CB420	61.04	73	0.005	18" RCP
CB410	65.60	61.24	CB420	60.98	52	0.005	12" RCP
CB420	65.70	60.98	CB430	60.51	93	0.005	18" RCP
CB430	66.40	60.51	DMH440	60.21	59	0.005	18" RCP
DMH440	67.00	60.21	CB450	59.31	180	0.005	18" RCP
CB450	65.85	59.31	CB460	58.90	82	0.005	18" RCP
CB460	65.00	58.90	DMH470	58.62	56	0.005	18" RCP
DMH470	65.12	58.62	DMH480	58.39	45	0.005	24" RCP
CB489	64.50	58.42	DMH480	57.94	20	0.005	12" RCP
CB479	64.00	60.60	DMH490	57.94	42	0.063	12" RCP
CB478	64.50	58.74	DMH470	58.62	24	0.005	12" RCP
DMH480	65.24	58.39	DMH490	57.94	90	0.005	24" RCP
HW489	--	61.82	CB479	60.60	123	0.010	12" RCP
DMH490	65.24	57.94	DMH510	57.28	132	0.005	30" RCP
DMH510	65.33	57.28	DMH520	56.40	175	0.005	30" RCP
DMH520	65.33	56.40	DMH530	56.20	40	0.005	30" RCP
CB484	65.00	61.92	FES485	61.80	27	0.005	8" STEEL
CB210	66.30	61.06	CB220	60.18	175	0.005	12" RCP
CB220	64.50	60.18	CB230	59.92	52	0.005	12" RCP
CB229	64.50	60.15	CB230	59.92	46	0.005	12" RCP
CB230	64.50	59.92	CB240	59.50	84	0.005	12" RCP
CB239	64.50	59.73	CB240	59.50	46	0.005	12" RCP
CB240	64.50	59.50	CB250	59.05	89	0.005	15" RCP
CB250	64.50	59.05	DMH260	58.96	18	0.005	15" RCP
DMH260	65.24	58.96	DMH270	58.51	90	0.005	15" RCP
CB269	64.50	58.61	DMH270	58.51	20	0.005	12" RCP
CB268	64.50	58.75	DMH270	58.51	29	0.005	12" RCP
DMH270	65.24	57.37	DMH280	55.00	80	0.03	15" RCP
CB110	65.60	61.18	CB120	60.92	52	0.005	12" RCP
CB120	65.60	60.92	CB130	60.51	82	0.005	12" RCP
CB130	65.60	60.51	DMH140	59.49	204	0.005	15" RCP
CB139	66.40	60.51	DMH140	59.49	22	0.005	12" RCP
DMH140	67.24	59.49	DMH280	55.00	278	0.016	15" RCP
DMH280	59.50	55.00	DMH292	54.33	131	0.005	24" RCP
DMH292	65.25	54.33	DMH310	53.31	243	0.005	24" RCP
DMH310	65.25	53.31	FES320	53.13	53	0.005	24" RCP

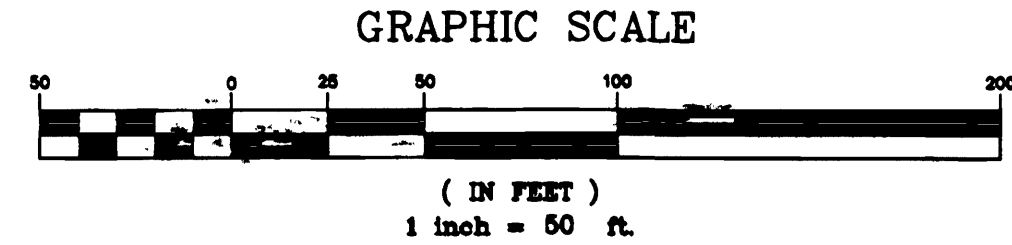


GRADING NOTES:

1. THE CONTRACTOR SHALL BE RESPONSIBLE FOR MAINTAINING ALL EROSION AND SEDIMENT CONTROL DEVICES AS SHOWN IN THE PLANS THROUGHOUT THE DURATION OF THE PROJECT IN ACCORDANCE WITH APPLICABLE NHDES STANDARDS. THE DETAILS PROVIDED SERVE AS A GUIDE ONLY.
2. ALL EXCAVATIONS SHALL BE THOROUGHLY SECURED ON A DAILY BASIS BY THE CONTRACTOR AT THE COMPLETION OF CONSTRUCTION OPERATIONS IN THE IMMEDIATE AREA.
3. VERIFY TBM ELEVATIONS PRIOR TO CONSTRUCTION. PROPOSED GRADING AND RIM ELEVATIONS PROVIDED BY OTHERS.

UTILITY NOTES:

1. THE CONTRACTOR SHALL BE RESPONSIBLE FOR VERIFYING AND DETERMINING THE LOCATION, SIZE AND ELEVATION OF ALL EXISTING UTILITIES PRIOR TO START OF ANY CONSTRUCTION. THE ENGINEER SHALL BE NOTIFIED IN WRITING OF ANY UTILITIES FOUND INTERFERING WITH THE PROPOSED CONSTRUCTION AND APPROPRIATE REMEDIAL ACTION AGREED TO BY THE ENGINEER BEFORE PROCEEDING WITH THE WORK. THE CONTRACTOR SHALL BE RESPONSIBLE FOR CONTACTING "DIG-SAFE" (888-DIG-SAFE) AT LEAST 72 HOURS PRIOR TO DIGGING.
2. PIPE DISTANCES ARE MEASURED FROM CENTER STRUCTURE TO CENTER STRUCTURE.
3. USE CLASS 4 RCP IN PAVED AREAS, EXCEPT WHERE COVER IS LESS THAN 3' USE CLASS 5. CLASS 3 FOR ALL LOCATIONS BEYOND PAVEMENT.
4. CONTRACT ENGINEER WITH ANY DISCREPANCY BETWEEN ACTUAL SITE CONDITIONS AND THOSE REPRESENTED ON THIS PLAN.
5. ALL CB/MH STRUCTURES ARE 4' DIAMETER UNLESS OTHERWISE NOTED.



LEGEND

- STANDARD DETAIL SYMBOL
- PROPOSED CATCH BASIN
- PROPOSED DRAIN MANHOLE
- FLARED END SECTION
- PROPOSED HEADWALL
- PROPOSED DRAINAGE PIPE
- PROPOSED OPEN DRAINAGE SWALE
- STONE OUTLET PROTECTION
- CHAIN LINK SECURITY FENCE
- GENERAL FLOW DIRECTION



REV.	DATE	REVISION DESCRIPTION	DRWN	LAYO	CIVILENGH	MECH	ELEC	PRJ	REV.	DATE	REVISION DESCRIPTION
1	6/1/00	APPROVED FOR CONSTRUCTION	PZA		TBC						
2	8/5/00	RELOCATE CB478, CB479 AND HW489 AND DELETE CB484, PIPE AND GATE VALVE & REV. DRAINAGE SCHEDULE	HS		SKA	PBY					

DRWN	LAYO	CIVILENGH	MECH	ELEC	PRJ	DWG. NO.	REFERENCE DRAWINGS

**DUKE/FLUOR DANIEL**

NOTICE: THIS DRAWING HAS NOT BEEN PUBLISHED AND IS THE SOLE PROPERTY OF DUKE/FLUOR DANIEL AND IS LENT TO THE BORROWER FOR THEIR CONFIDENTIAL USE ONLY. AND IN CONSIDERATION OF THE LOAN OF THIS DRAWING, THE BORROWER PROMISES AND AGREES TO RETURN IT UPON REQUEST AND AGREES THAT IT SHALL NOT BE REPRODUCED, COPIED, LENT OR OTHERWISE DISPOSED OF DIRECTLY OR INDIRECTLY, NOR USED FOR ANY PURPOSE OTHER THAN FOR WHICH IT IS FURNISHED.

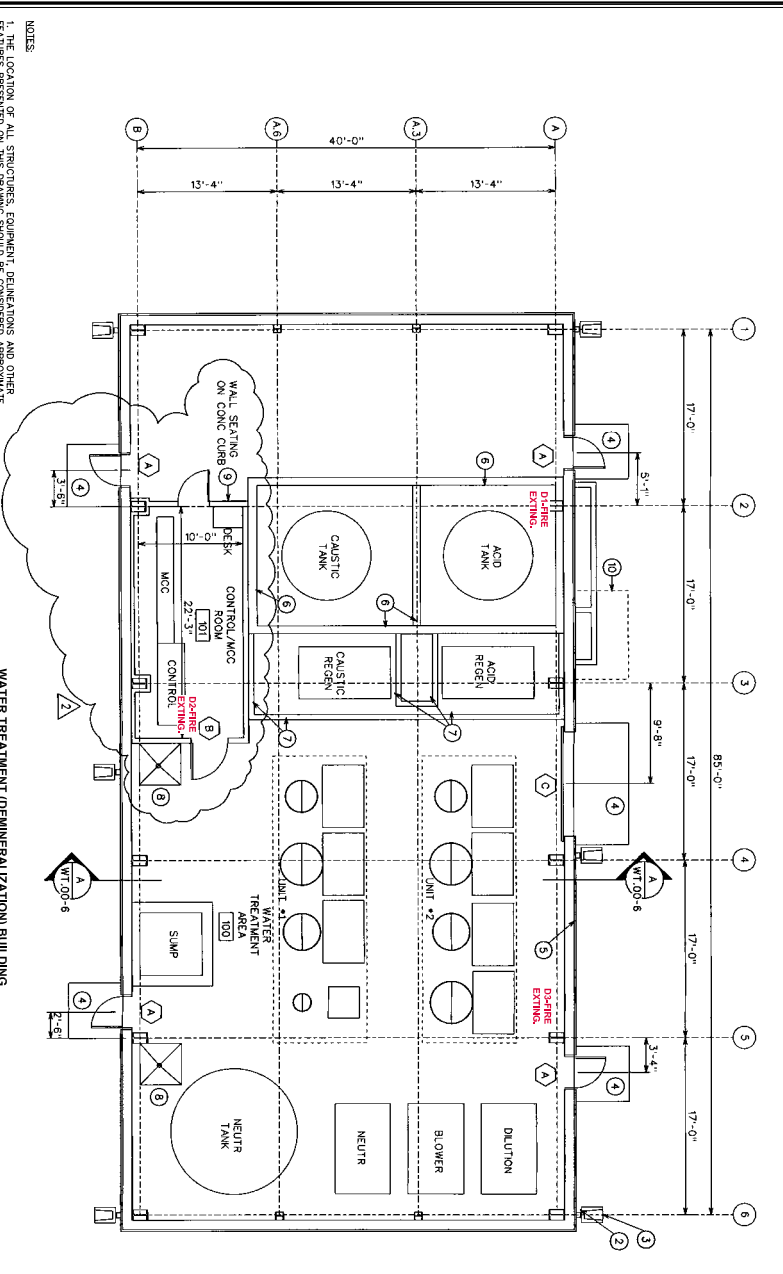
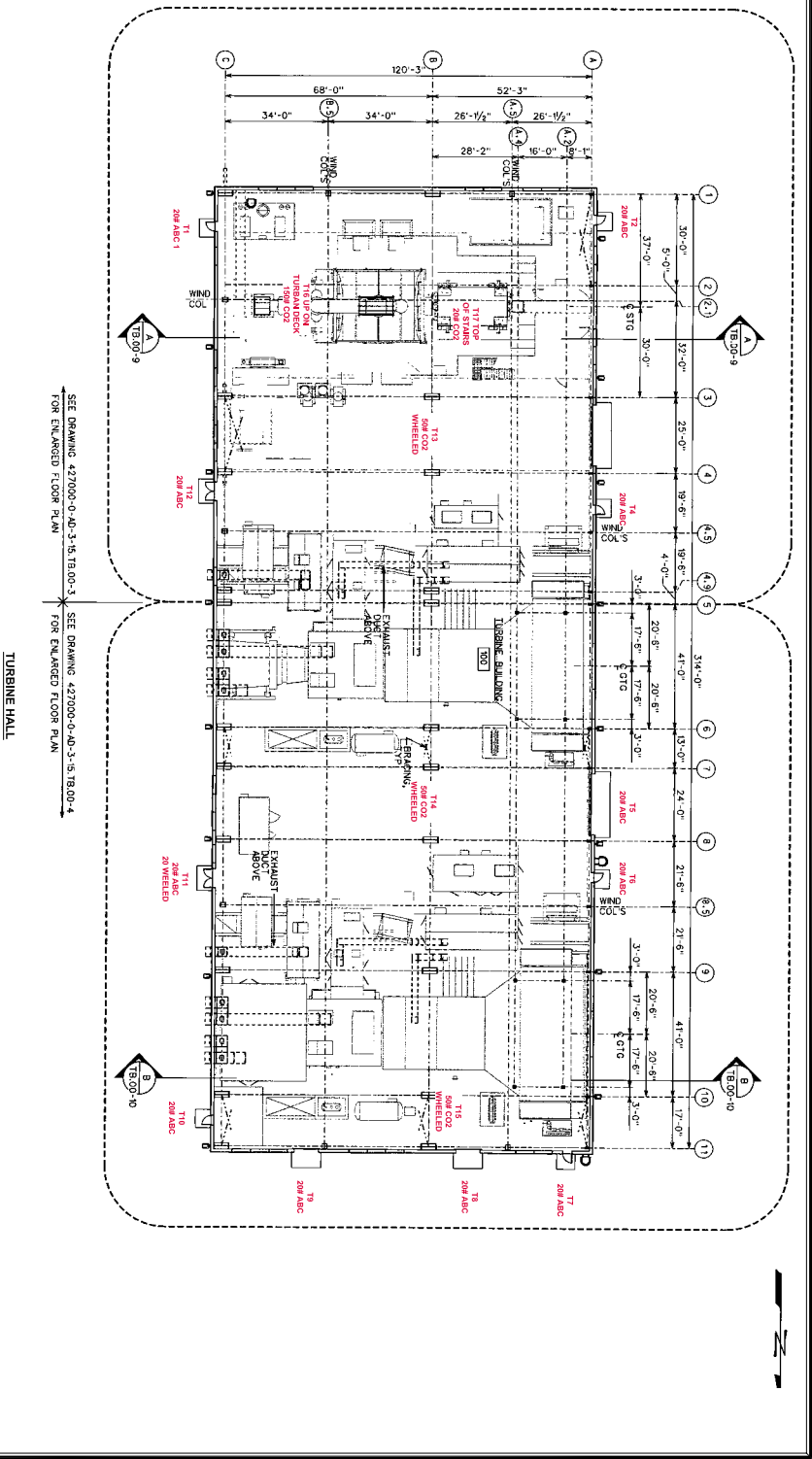
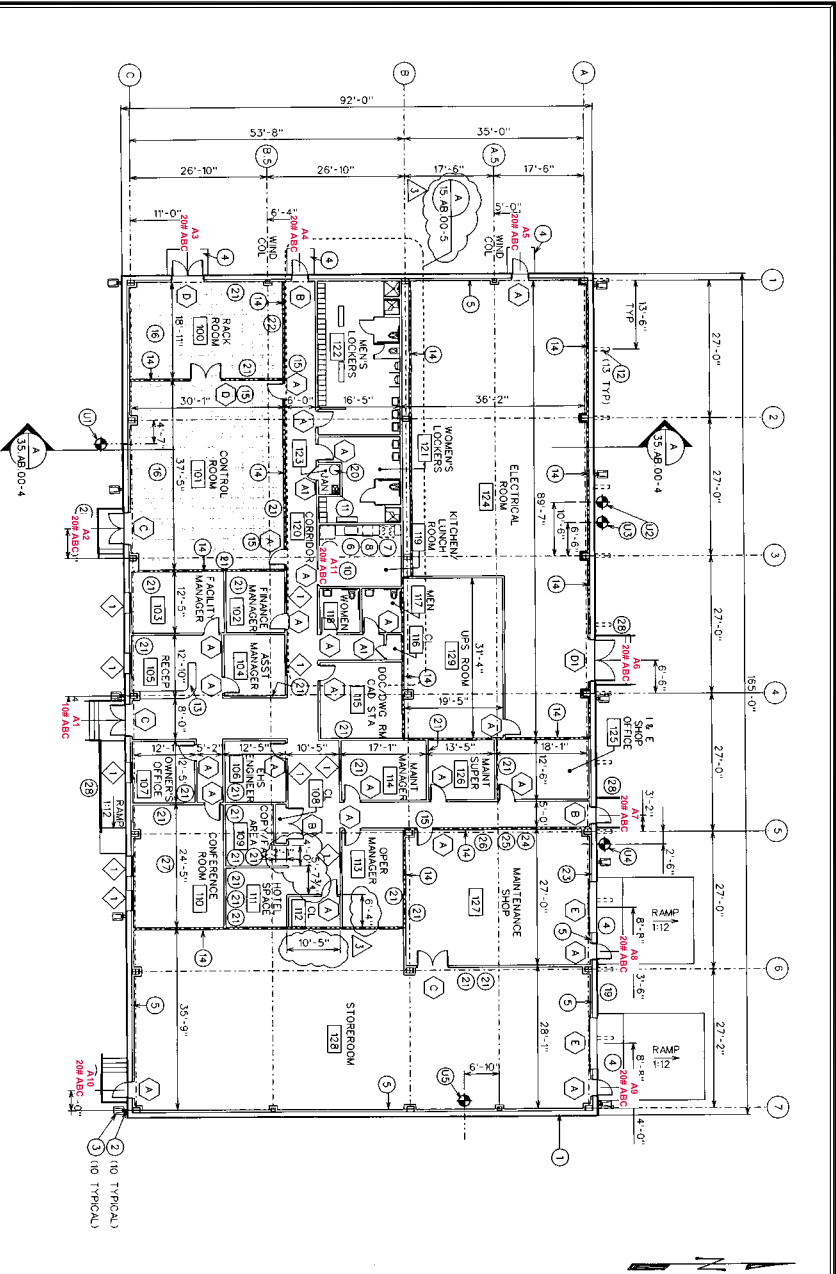
DRAWN BY	H SARMIENTO	PZA/1 JUN 00
CHECKED BY	A GUINDONES	DNE/1 JUL 00
LAYOUT APPROVAL		TBC/1 JUN 00
MECHANICAL APPROVAL		INITIALS/DATE
CIVIL APPROVAL	S YAMANOHA	INITIALS/DATE SKA 10/12/00
ELECTRICAL APPROVAL		INITIALS/DATE
ENGINEERING MANAGER	P DAWKINS	INITIALS/DATE PD 10-19-00
PROJECT DIRECTOR		INITIALS/DATE

NEWINGTON ENERGY, LLC.		NEWINGTON ENERGY	
<b>DRAINAGE PLAN</b>			
SCALE	CONTRACT NUMBER	UNIT NO	DOC TYPE/FUNC
1"=50'	427000	0	CV 0
SUBJECT CODE	SD	12	2



**Figure 6**

**Fire Extinguishers**



**NOTES**

1. THE LOCATION OF ALL STRUCTURES, EQUIPMENT, REGULATIONS AND OTHER FEATURES SHOWN ON THIS DRAWING ARE BASED ON THE INFORMATION CONTAINED IN THIS DRAWING AND THE USER ASSUMES ALL RISK OF INACCURACY AS TO THE CORRECTNESS OR THE COMPLETENESS OF THE INFORMATION CONTAINED IN THIS DRAWING.

2. BASE MAP IS BASED ON THE FOLLOWING MAPS:

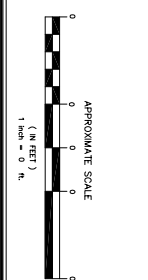
A. NEWINGTON ENERGY, LLC NEWINGTON ENERGY TURBINE GENERATOR ARCHITECTURAL FLOOR PLAN SCALE: 3/32"=1'-0", DATE: 10/27/00 REVISED 12/18/00 BY DIKE FLOOR PANEL

B. NEWINGTON ENERGY, LLC NEWINGTON ENERGY TURBINE GENERATOR ARCHITECTURAL FLOOR PLAN SCALE: 3/32"=1'-0", DATE: 10/27/00 REVISED 12/18/00 BY DIKE FLOOR PANEL

C. NEWINGTON ENERGY, LLC NEWINGTON ENERGY TURBINE WATER TREATMENT BUILDING ARCHITECTURAL FLOOR PLAN SCALE: 3/16"=1'-0", DATE: 10/27/00 REVISED 12/18/00 BY DIKE FLOOR PANEL

SEE DRAWING 427000-0-AD-3-1518-00-3 FOR ENLARGED FLOOR PLAN

SEE DRAWING 427000-0-AD-3-1518-00-4 FOR ENLARGED FLOOR PLAN

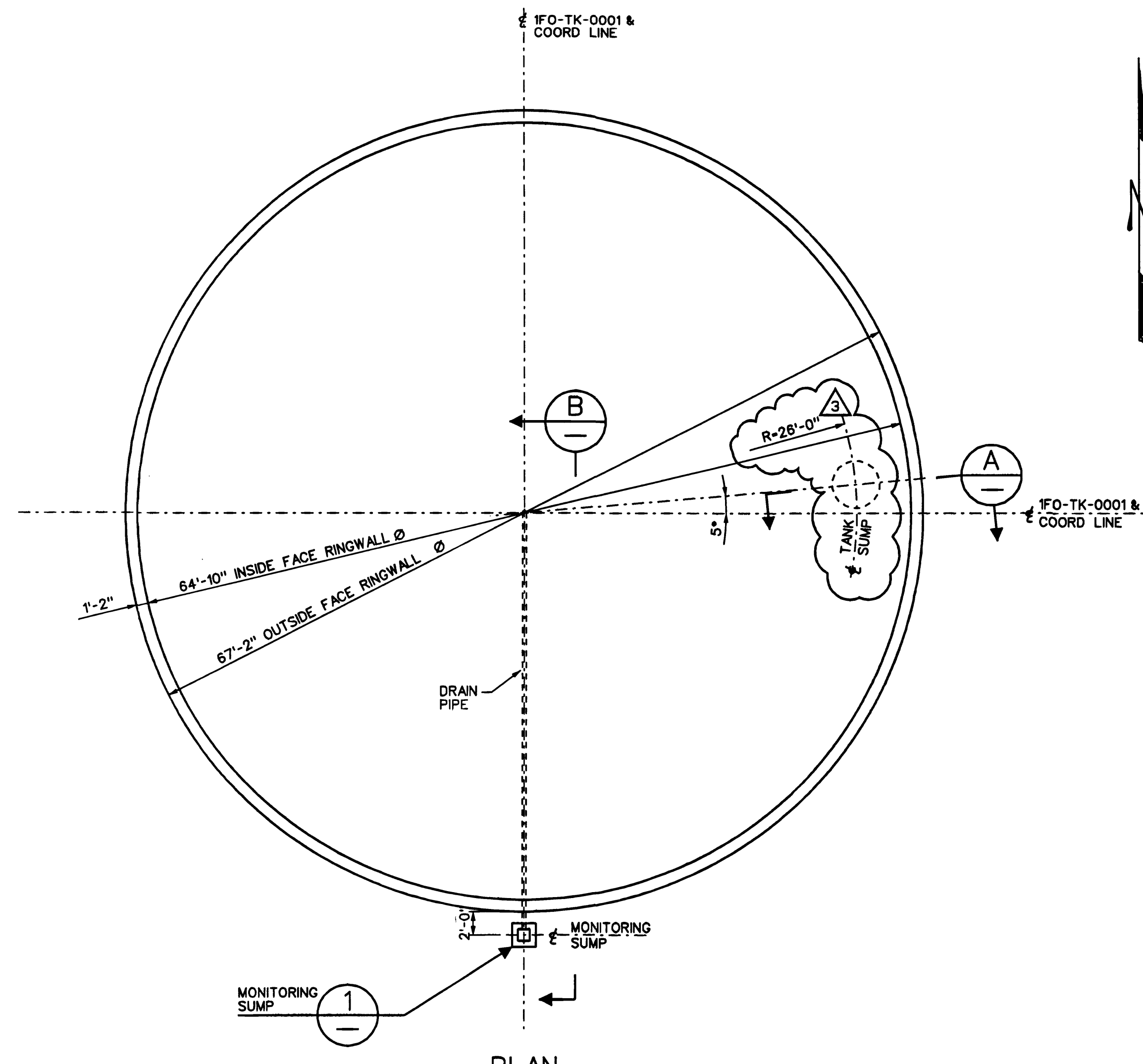


<p><b>TRITON ENVIRONMENTAL, INC.</b> Environmental Consulting &amp; Engineering</p>	
<p>388 Ocean Street, Suite 201 • Oyster, Connecticut 06457 • 203.468.7200</p>	
<p>FIGURE 6</p>	
<p>FIRE EXTINGUISHERS - NUMBER AND LOCATION</p>	
<p>NEWINGTON ENERGY, LLC NEWINGTON, NEW HAMPSHIRE</p>	
<p>DRAWN BY: WHLM</p>	<p>APPROVED BY: B/26/03</p>
<p>DATE: P.S.</p>	<p>FILE NO.: QUAD PICS</p>

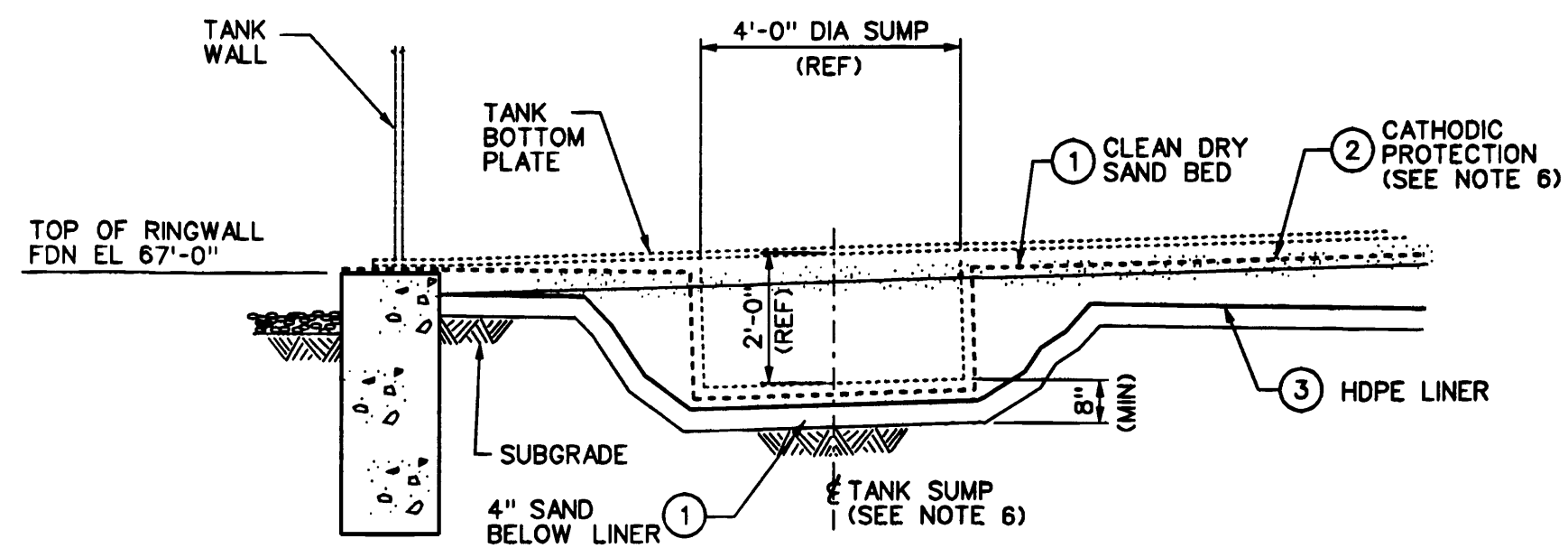


**Drawing 1**

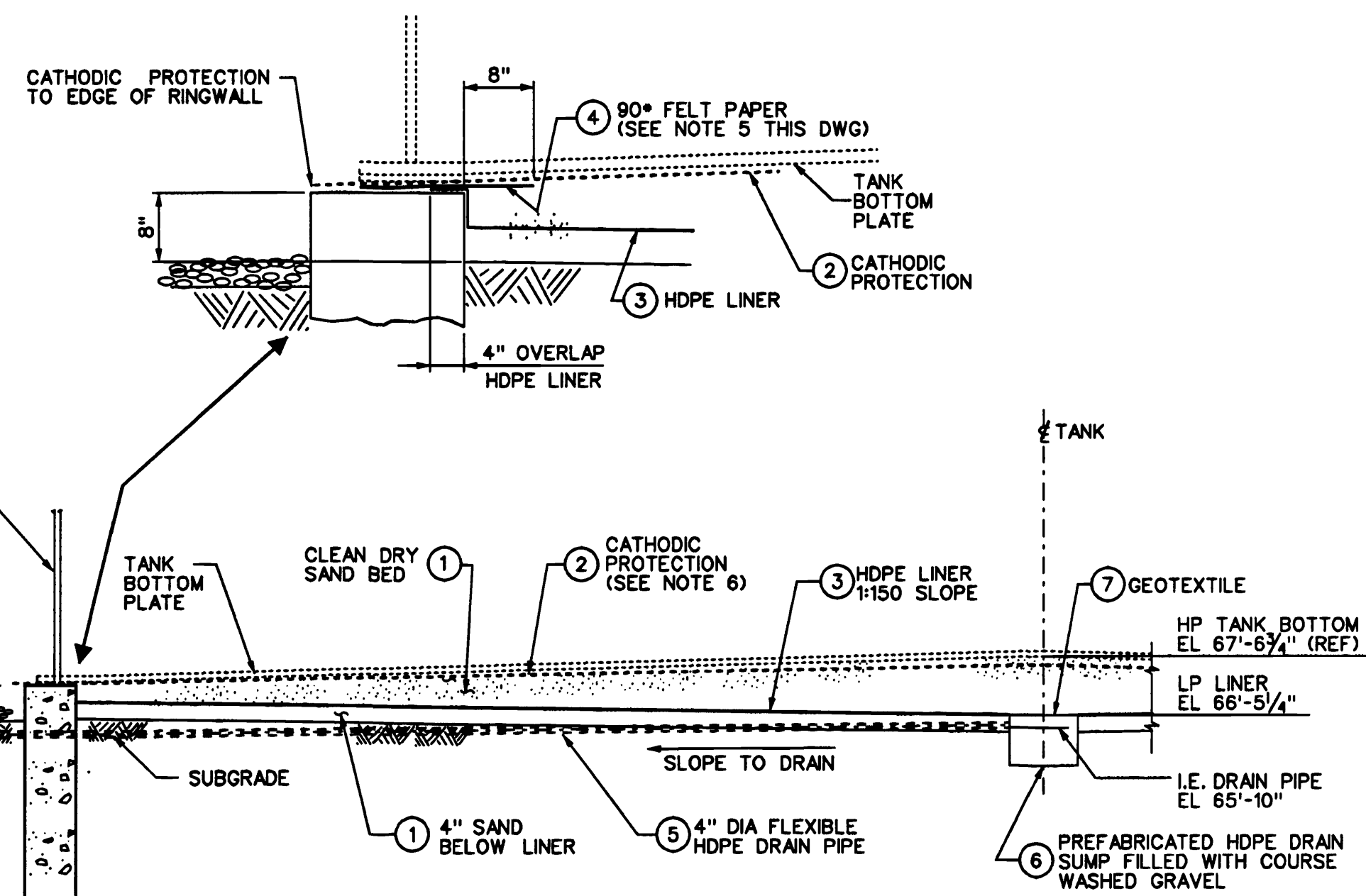
**Fuel Oil Tank (Tank 21) Ringwall**



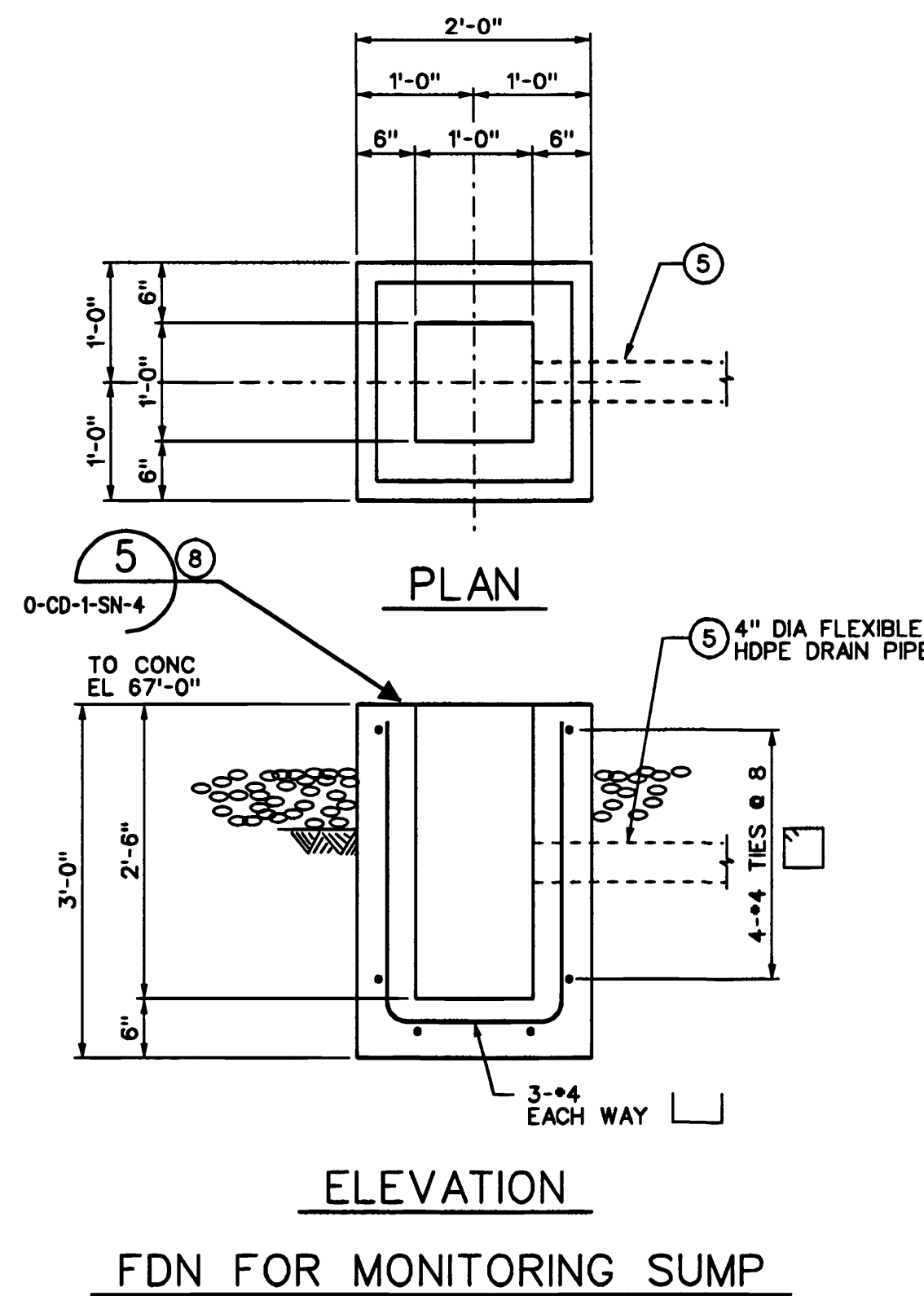
PLAN  
FOUNDATION FOR 1FO-TK-0001  
FUEL OIL TANK  
SCALE: 1/8"=1'-0"



SECTION A-A  
SCALE: 3/4"=1'-0"

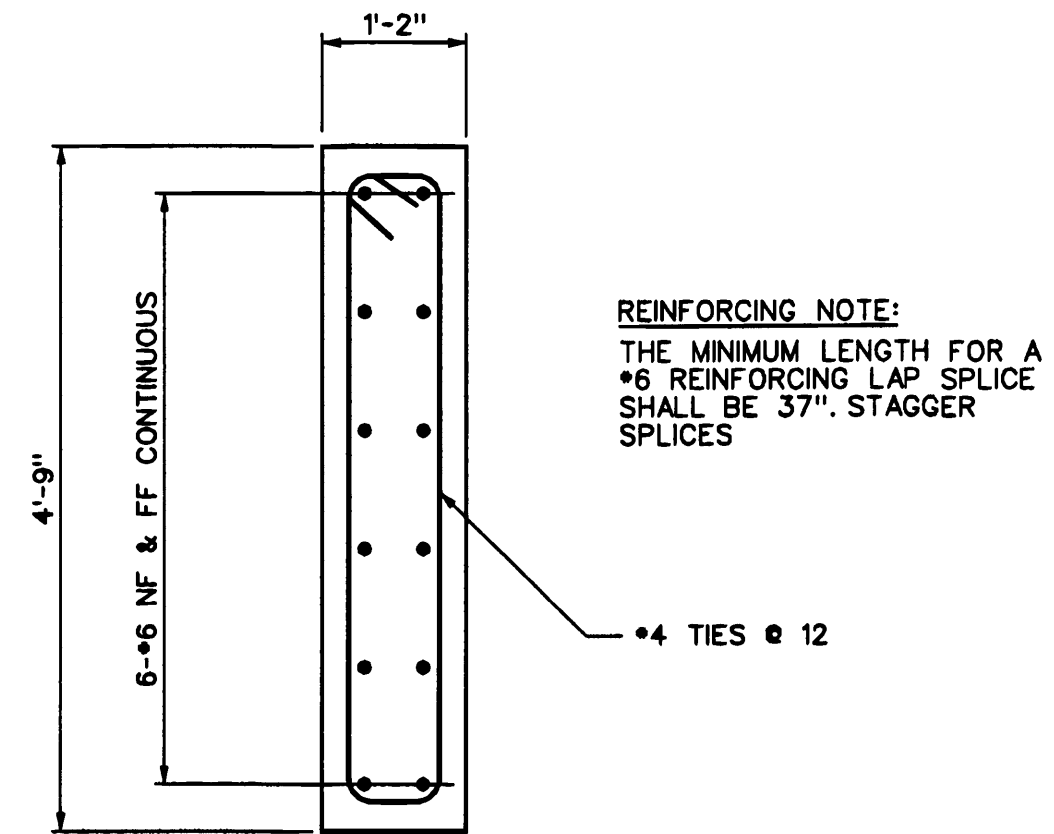


SECTION B-B  
SCALE: 3/8"=1'-0"



ELEVATION  
FDN FOR MONITORING SUMP

DETAIL 1  
SCALE: 3/4"=1'-0"



FDN FOR RINGWALL

DETAIL 2  
SCALE: 3/4"=1'-0"

NOTES:

- FOR CONCRETE GENERAL NOTES AND TYPICAL DETAILS SEE DRAWING 427000-0-CD-1-SN-1
- FOR LOCATION SEE FOUNDATION LOCATION PLAN DRAWING 427000-0-CD-1-LP-3.
- ALL COMPACTION SHALL BE PERFORMED IN ACCORDANCE WITH SPECIFICATION 427000-0-SP-0-SJ-3, EXCAVATION AND BACKFILL FOR UNDERGROUND STRUCTURES AND PIPING.
- CLEAN DRY SAND BED SHALL BE PLACED LEVEL WITH THE CONCRETE WALL. SAND TO BE USED SHALL BE FREE OF ALL DELETERIOUS MATERIAL. SALT CONTENT SHALL NOT BE MORE THAN 0.1%; SAND SHALL BE DRIED TO A FREE MOISTURE CONTENT OF NOT MORE THAN 7% BY WEIGHT OF DRY SOIL. THE SAND MUST BE SCREENED THROUGH 1/2" MESH, (MAXIMUM), TO ASSURE ELIMINATION OF ALL CLOTS. CARE SHOULD BE TAKEN IN USING CLEAN MIXING AND HANDLING EQUIPMENT TO ASSURE SAND REMAINS FREE OF THESE CLOTS AND OTHER FOREIGN MATTER. AFTER PLACING, THE SAND SHALL BE ROLLED OR SHALL BE COMPACTED WITH A COMPACTION PLATE, BEFORE PLACEMENT OF THE TANK SAND SHALL BE PROTECTED FROM ANY CONTAMINATION (FROM AIR OR SURROUNDING AREA).
- A SHEET OF 90° FELT PAPER SHALL BE PLACED BETWEEN THE TOP OF CONCRETE FOUNDATION AND SALSA SYSTEM ON THE TANK BOTTOM.
- WRAP TANK BOTTOM AND TANK SUMP WITH 3-LAYERS OF ALUMINUM SHEET. SEE DUKE/FLUOR DANIEL SPECIFICATION 427000-0-SP-4-CP-1

BILL OF MATERIAL					
QUANTITIES LISTED ARE NET.					
P.D. NUMBER	QTY	NO. REQ'D.	SIZE	LENGTH	DESCRIPTION
427023-1-K27	(1)	1-LOT	---	---	CLEAN DRY SAND BED (PER NOTE 4 THIS DWG)
427023-1-K27	(2)	1-LOT	---	---	CATHODIC PROTECTION
427023-1-K27	(3)	1-LOT	---	---	HDPE LINER
427023-1-K27	(4)	1-LOT	---	---	90 LB FELT PAPER
427023-1-K27	(5)	1	4" DIA	---	FLEXIBLE DRAIN PIPE
427023-1-K27	(6)	1	---	---	PREFABRICATED HDPE DRAIN SUMP
427023-1-K27	(7)	1	---	---	GEOTEXTILE
427023-1-K27	(8)	1	1/4" X 1'-6"	1'-6"	CHECKERED PLATE
427023-1-K27	---	1-LOT	---	---	REINFORCING STEEL PER THIS DRAWING
427023-1-K27	---	43	CU YDS	---	CONCRETE TOTAL PER THIS DRAWING

REV.	DATE	REVISION DESCRIPTION	DRWN	LAYO	CIVIL	ENGR	PROJ	REV.	DATE	REVISION DESCRIPTION	DRWN	LAYO	CIVIL	ENGR	PROJ	DWG. NO.	REFERENCE DRAWINGS
1	8/31/00	APPROVED FOR CONSTRUCTION	SED	N/A	SHY	---	---									0-CD-1-SN-1	CONCRETE GENERAL NOTES AND TYPICAL DETAILS
2	10/22/00	ADDED THE LOCATION FOR TANK SUMP & COVER FOR MONITORING SUMP	FRC	N/A	SHY	PD	---									0-CD-1-LP-3	FOUNDATION LOCATION PLAN
3	3/21/01	REVISED TANK SUMP LOCATION	FRC	N/A	SHY	---	---										

**DUKE/FLUOR DANIEL**

NOTICE: THIS DRAWING HAS NOT BEEN PUBLISHED AND IS THE SOLE PROPERTY OF DUKE/FLUOR DANIEL AND IS LOANED TO THE BORROWER FOR THEIR CONFIDENTIAL USE ONLY, AND IN CONSIDERATION OF THE LOAN OF THIS DRAWING, THE BORROWER PROMISES AND AGREES TO RETURN IT UPON REQUEST AND AGREES THAT IT SHALL NOT BE REPRODUCED, COPIED, LENT OR OTHERWISE DISPOSED OF DIRECTLY OR INDIRECTLY, NOR USED FOR ANY PURPOSE OTHER THAN FOR WHICH IT IS FURNISHED.

DRAWN BY S. DORSEY	INITIALS/DATE SED 8/31/00
CHECKED BY F. CRISTALDI	INITIALS/DATE FRC 8/31/00
LAYOUT APPROVAL N/A	INITIALS/DATE
MECHANICAL APPROVAL N/A	INITIALS/DATE
CIVIL APPROVAL S. YAMANOHA	INITIALS/DATE SHY 8/31/00
ELECTRICAL APPROVAL N/A	INITIALS/DATE
ENGINEERING MANAGER P. DAWKINS	INITIALS/DATE BEJ for RPD 8/31/00
PROJECT DIRECTOR N/A	INITIALS/DATE

NEWINGTON ENERGY, LLC  
NEWINGTON ENERGY

FUEL OIL TANK  
1FO-TK-0001 RINGWALL  
FOUNDATION DETAILS

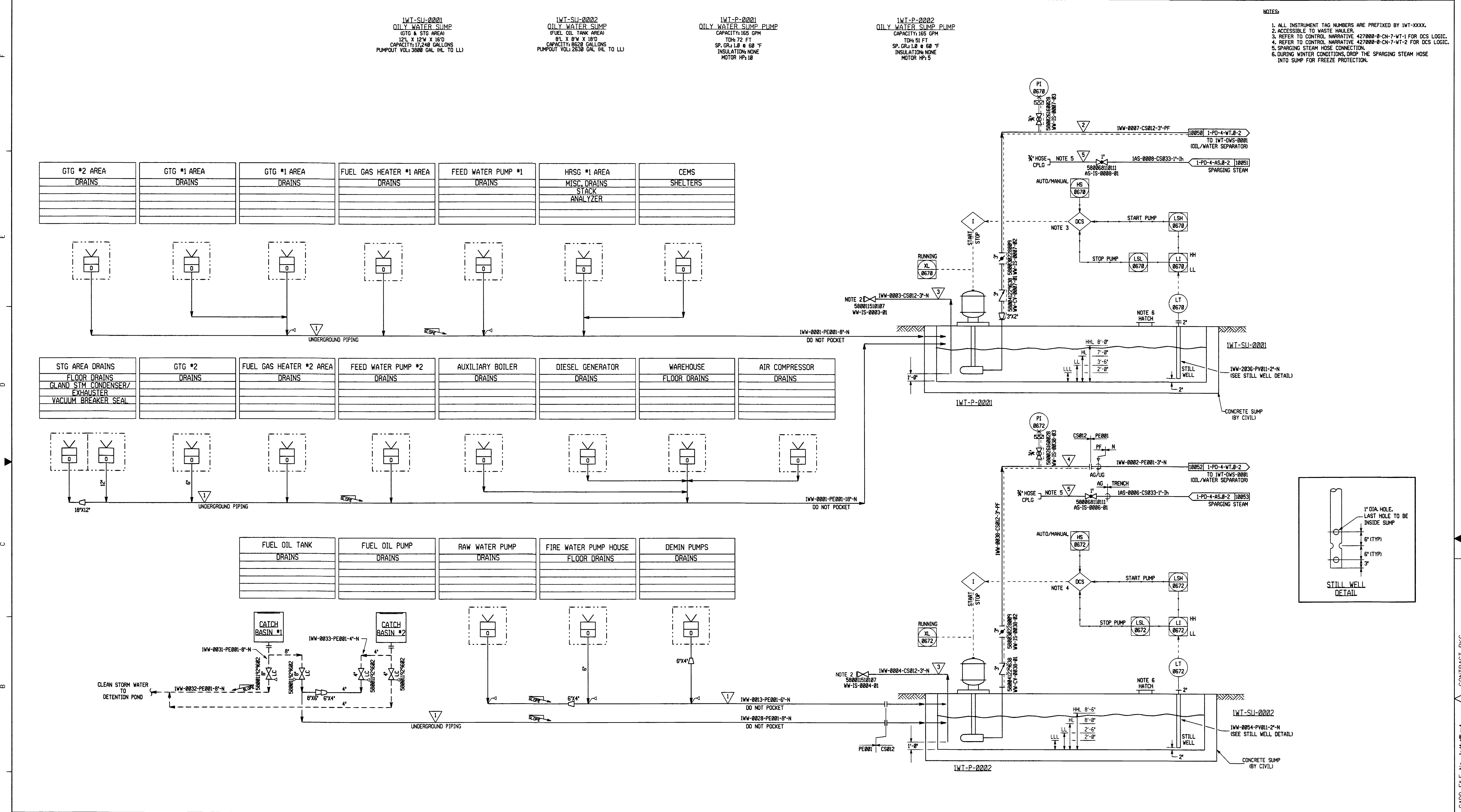
SCALE: AS NOTED  
DRAWING NUMBER: 427000-0-CD-1-FO-1  
REV: 3

**Drawing 2**

**Catch Basins/Drainage System with Sumps**



PROCESS CONDITIONS - STREAM NO.	TEMPERATURE	PRESSURE	PHASE	REMARKS
1				
2				
3				
4				
5				
6				
7				
8				
9				
10				
11				
12				
13				
14				
15				
16				
17				
18				
19				
20				
21				
22				
23				
24				
25				
26				
27				
28				
29				
30				
31				
32				
33				
34				
35				
36				
37				
38				
39				
40				
41				
42				
43				
44				
45				
46				
47				
48				
49				
50				
51				
52				
53				
54				
55				
56				
57				
58				
59				
60				
61				
62				
63				
64				
65				
66				
67				
68				
69				
70				
71				
72				
73				
74				
75				
76				
77				
78				
79				
80				
81				
82				
83				
84				
85				
86				
87				
88				
89				
90				
91				
92				
93				
94				
95				
96				
97				
98				
99				
100				



- NOTES:
1. ALL INSTRUMENT TAG NUMBERS ARE PREFIXED BY IWT-XXXX.
  2. ACCESSIBLE TO WASTE HALLER.
  3. REFER TO CONTROL NARRATIVE 427000-0-CN-7-WT-1 FOR DCS LOGIC.
  4. REFER TO CONTROL NARRATIVE 427000-0-CN-7-WT-2 FOR DCS LOGIC.
  5. SPARGING STEAM HOSE CONNECTION.
  6. DURING WINTER CONDITIONS, DROP THE SPARGING STEAM HOSE INTO SUMP FOR FREEZE PROTECTION.

REV.	DATE	REVISION DESCRIPTION	DES. CHK.	APPROVED	REV.	DATE	REVISION DESCRIPTION	DES. CHK.	APPROVED	DWG. NO.	REFERENCE DRAWINGS
0	07/11/00	FOR REVIEW AND APPROVAL	SN	BEJ							
		CONSIDERED AFD PER CLIENT REVIEW MEETING (EMAIL DATED 7-31-00)	BJ	BEJ for RPD							
1	10/05/00	APPROVED FOR DESIGN	SN	BEJ							
2	01/26/01	APPROVED FOR CONSTRUCTION	SN	BEJ							
3	11/09/01	APPROVED FOR CONSTRUCTION (GENERAL REVISION)	SN	BEJ							

DESIGNED BY	S. NGO
CHECKED BY	B. JACOBSON
SUPERVISOR	B. JOHNSON
LEAD ENGR./SPECIALIST	B. JACOBSON
PROJECT	R. DAWKINS
CLIENT	
APP. DATE	10/13/00
APP. DATE	RPD 10/16/00
APP. DATE	

NEWINGTON ENERGY, L.L.C. NEWINGTON ENERGY NEWINGTON, NEW HAMPSHIRE	
PIPING & INSTRUMENTATION DIAGRAM WW COLLECTION AND TREATMENT SYSTEM (WT) WASTE WATER COLLECTION SYSTEM	
SCALE	DRAWING NUMBER
NONE	04427000-1-PD-4-WT-0-1
REV.	3

DUKE/FLUOR DANIEL

NOTICE: THIS DRAWING HAS NOT BEEN PUBLISHED AND IS THE SOLE PROPERTY OF DUKE/FLUOR DANIEL AND IS LENT TO THE BORROWER FOR THEIR CONFIDENTIAL USE ONLY, AND IN CONSIDERATION OF THE LOAN OF THIS DRAWING, THE BORROWER PROMISES AND AGREES TO RETURN IT UPON REQUEST AND AGREES THAT IT SHALL NOT BE REPRODUCED, COPIED, LENT OR OTHERWISE DISPOSED OF DIRECTLY OR INDIRECTLY, NOR USED FOR ANY PURPOSE OTHER THAN FOR WHICH IT IS FURNISHED.

\*DATE\*TIME\* MANUAL CHANGES MADE - YES  NO  DWG. FILE UPDATED - YES  NO  MODEL UPDATED - YES  NO

D:\FD\_D\DRN 11-20-99

CADD FILE NO.: ipdw04427000-1-PD-4-WT-0-1

## **Drawing 3**

### **OWS and Discharge System**

PROCESS CONDITIONS	STREAM NO.	TEMPERATURE	PHASE	REMARKS
LIQUID	10050	100	L	FROM IWT-P-0001 (OILY WATER SUMP PUMP) (CTG & STG AREA)
LIQUID	10052	100	L	FROM IWT-P-0002 (OILY WATER SUMP PUMP) (FUEL OIL TANK AREA)
LIQUID	10053	100	L	FROM IWT-P-0003 (CLEAN WATER SUMP PUMP)
LIQUID	10054	100	L	FROM IWT-P-0004 (CLEAN WATER SUMP PUMP)
LIQUID	10055	100	L	FROM IWT-P-0005 (CLEAN WATER SUMP PUMP)
LIQUID	10056	100	L	FROM IWT-P-0006 (CLEAN WATER SUMP PUMP)
LIQUID	10057	100	L	FROM IWT-P-0007 (CLEAN WATER SUMP PUMP)
LIQUID	10058	100	L	FROM IWT-P-0008 (CLEAN WATER SUMP PUMP)
LIQUID	10059	100	L	FROM IWT-P-0009 (CLEAN WATER SUMP PUMP)
LIQUID	10060	100	L	FROM IWT-P-0010 (CLEAN WATER SUMP PUMP)
LIQUID	10061	100	L	FROM IWT-P-0011 (CLEAN WATER SUMP PUMP)
LIQUID	10062	100	L	FROM IWT-P-0012 (CLEAN WATER SUMP PUMP)
LIQUID	10063	100	L	FROM IWT-P-0013 (CLEAN WATER SUMP PUMP)
LIQUID	10064	100	L	FROM IWT-P-0014 (CLEAN WATER SUMP PUMP)
LIQUID	10065	100	L	FROM IWT-P-0015 (CLEAN WATER SUMP PUMP)
LIQUID	10066	100	L	FROM IWT-P-0016 (CLEAN WATER SUMP PUMP)
LIQUID	10067	100	L	FROM IWT-P-0017 (CLEAN WATER SUMP PUMP)
LIQUID	10068	100	L	FROM IWT-P-0018 (CLEAN WATER SUMP PUMP)
LIQUID	10069	100	L	FROM IWT-P-0019 (CLEAN WATER SUMP PUMP)
LIQUID	10070	100	L	FROM IWT-P-0020 (CLEAN WATER SUMP PUMP)
LIQUID	10071	100	L	FROM IWT-P-0021 (CLEAN WATER SUMP PUMP)
LIQUID	10072	100	L	FROM IWT-P-0022 (CLEAN WATER SUMP PUMP)
LIQUID	10073	100	L	FROM IWT-P-0023 (CLEAN WATER SUMP PUMP)
LIQUID	10074	100	L	FROM IWT-P-0024 (CLEAN WATER SUMP PUMP)
LIQUID	10075	100	L	FROM IWT-P-0025 (CLEAN WATER SUMP PUMP)
LIQUID	10076	100	L	FROM IWT-P-0026 (CLEAN WATER SUMP PUMP)
LIQUID	10077	100	L	FROM IWT-P-0027 (CLEAN WATER SUMP PUMP)
LIQUID	10078	100	L	FROM IWT-P-0028 (CLEAN WATER SUMP PUMP)
LIQUID	10079	100	L	FROM IWT-P-0029 (CLEAN WATER SUMP PUMP)
LIQUID	10080	100	L	FROM IWT-P-0030 (CLEAN WATER SUMP PUMP)

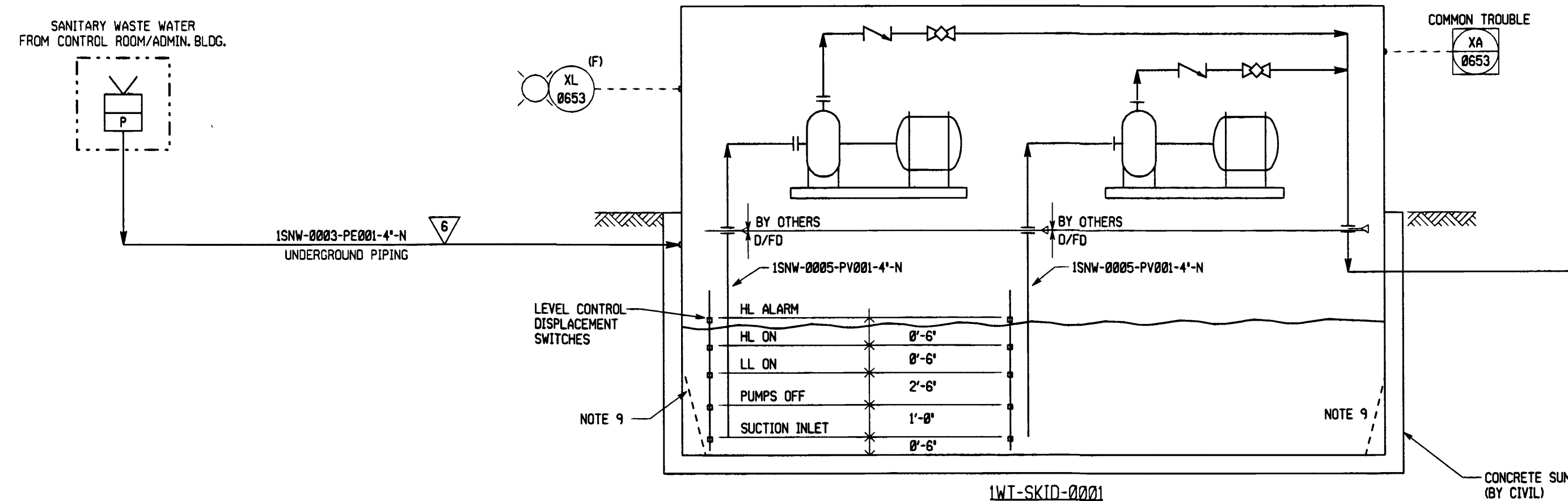
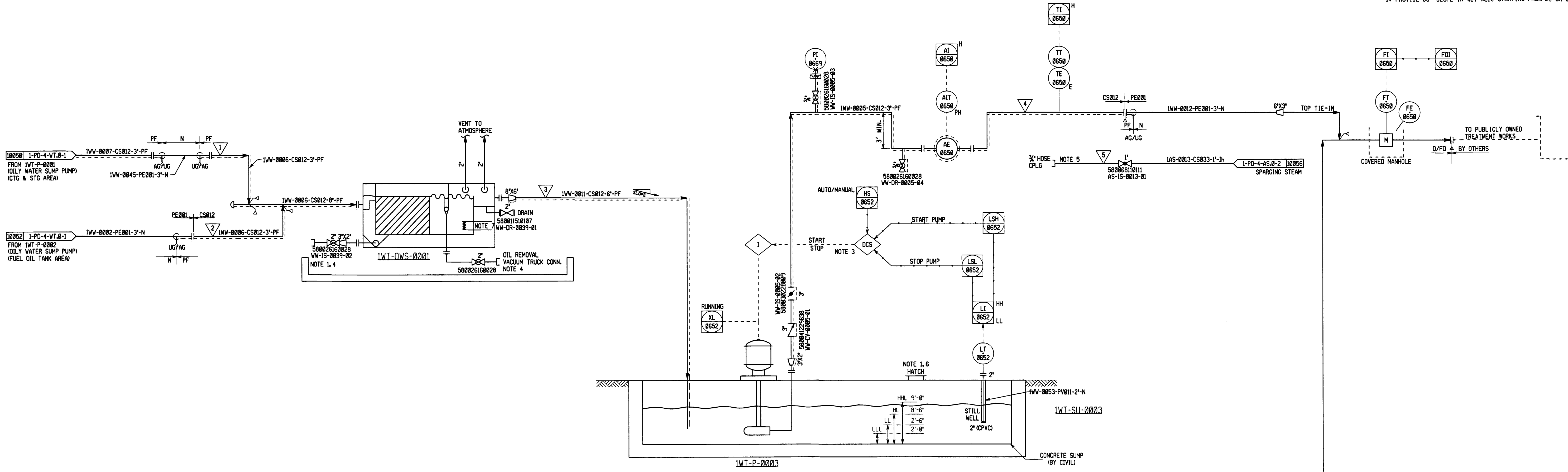
**IWT-SKID-0001**  
SANITARY LIQUID STATION  
CAPACITY: 100 GPM  
5'-4" ID X 13'-0" D

**IWT-QWS-0001**  
OIL/WATER SEPARATOR  
CAPACITY: 150 GPM (NORMAL)  
CAPACITY: 250 GPM (MAXIMUM)  
OIL IN EFFLUENT: 10 ppm (MAX)  
DIMENSIONS: 8'-3" (L) X 8'-0" (W) X 7'-3" (H)  
TRIM: IWN-0039-CS012-PF

**IWT-P-0003**  
CLEAN WATER SUMP PUMP  
CAPACITY: 165 GPM  
TOH: 75 FT  
S.G.: 1.18 @ 68 °F  
INSULATION: NONE  
MOTOR HP: 18

**IWT-SU-0003**  
CLEAN WATER SUMP  
25' L X 18' W X 10' D  
CAPACITY: 30,000 GALLONS  
PUMPOUT VOL.: 15,000 GAL. (H. TO LL)

- NOTES:
- ACCESSIBLE TO WASTE HAULER.
  - ALL INSTRUMENT TAG NUMBERS ARE PREFIXED BY IWT-XXXX.
  - REFER TO CONTROL NARRATIVE 427000-D-CN-1-WT-3 FOR DCS LOGIC.
  - PROVIDE 2" CAMLOCKS FITTING FOR TRUCK CONNECTION.
  - SPARGING STEAM HOSE CONNECTION.
  - DURING WINTER CONDITIONS, DROP THE SPARGING STEAM HOSE INTO SUMP FOR FREEZE PROTECTION.
  - ELECTRIC IMMERSION HEATERS PROVIDED FOR BOTH OIL AND WATER COMPARTMENTS FOR FREEZE PROTECTION.
  - DELETED.
  - PROVIDE 60° SLOPE IN WET WELL STARTING FROM LL ON LEVEL.



REV.	DATE	REVISION DESCRIPTION	DES. CHK.	APPROVED	REV. DATE	REVISION DESCRIPTION	DES. CHK.	APPROVED	DWG. NO.	REFERENCE DRAWINGS
0	07/11/00	FOR REVIEW AND APPROVAL	SN BJ	BEJ BEJ for RPD						
1	08/05/00	APPROVED FOR DESIGN	SN BJ	BEJ RPD						
2	01/26/01	APPROVED FOR CONSTRUCTION	SN BJ	BEJ BEJ for RPD						
3	11/09/01	APPROVED FOR CONSTRUCTION (GENERAL REVISION)	SN BJ	BEJ BEJ						

DESIGNED BY	S. NGO	CLIENT	NEWINGTON ENERGY, L.L.C.
CHECKED BY	B. JACOBSON	SCALE	NONE
SUPERVISOR	B. JOHNSON	DRAWING NUMBER	04427000-1-PD-4-WT.0-2
LEAD ENGR./SPECIALIST	B. JACOBSON	REV.	3
PROJECT	R. DAWKINS		

**DUKE/FLUOR DANIEL**

NOTICE: THIS DRAWING HAS NOT BEEN PUBLISHED AND IS THE SOLE PROPERTY OF DUKE/FLUOR DANIEL AND IS LENT TO THE BORROWER FOR THEIR CONFIDENTIAL USE ONLY. AND IN CONSIDERATION OF THE LOAN OF THIS DRAWING, THE BORROWER PROMISES AND AGREES TO RETURN IT UPON REQUEST AND AGREES THAT IT SHALL NOT BE REPRODUCED, COPIED, LENT OR OTHERWISE DISPOSED OF DIRECTLY OR INDIRECTLY, NOR USED FOR ANY PURPOSE OTHER THAN FOR WHICH IT IS FURNISHED.

\*DATE\* TIME \* MANUAL CHANGES MADE - YES  NO  DWG. FILE UPDATED - YES  NO  MODEL UPDATED - YES  NO

CADD FILE No. jpd4wt2.ppt CONTRACT PKG. WK. PKG.



**Drawing 4**

**Bulk Oil Aboveground Storage Tank**



**Drawing 5**

**Fire Piping System**



