

# EROSION CONTROL PLANS

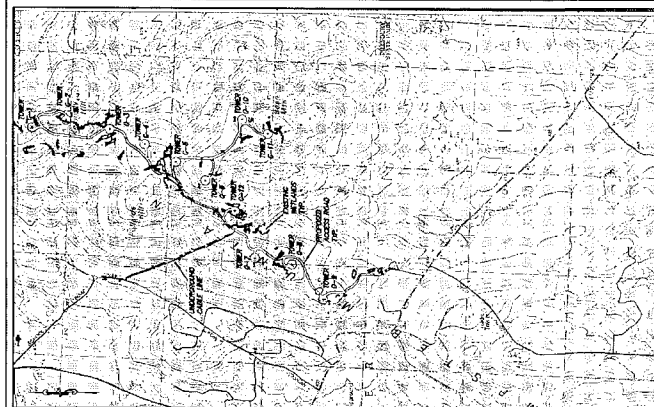
# WIND TURBINE CONSTRUCTION

## LEMPSTER MOUNTAIN - LEMPSTER, NEW HAMPSHIRE

### APRIL 11, 2006

#### SOILS LEGEND

Soil Code	Soil Name	Soil Description	Soil Group
A/E	Adams	25-35%	HSG A
C/B	Calton	3-8%	HSG A
H/B	Haven	3-8%	HSG C
H/C	Haven	8-15%	HSG C
H/H	Herron	3-8%	HSG A
H/M	Herron	8-15%	HSG A
H/N	Herron	15-25%	HSG A
L/E	Lyme-Monrook	25-35%	HSG C/D
L/A	Lyme-Monrook	0-3%	HSG C
H/B	Haven	3-8%	HSG C
H/C	Haven	8-15%	HSG C
H/D	Herron	15-25%	HSG C
H/E	Herron	25-35%	HSG C
H/F	Herron	0-3%	HSG C
H/G	Herron	3-8%	HSG C
H/H	Herron	8-15%	HSG C
H/I	Herron	15-25%	HSG C
H/J	Herron	25-35%	HSG C
H/K	Herron	0-3%	HSG C
H/L	Herron	3-8%	HSG C
H/M	Herron	8-15%	HSG C
H/N	Herron	15-25%	HSG C
H/O	Herron	25-35%	HSG C
H/P	Herron	0-3%	HSG C
H/Q	Herron	3-8%	HSG C
H/R	Herron	8-15%	HSG C
H/S	Herron	15-25%	HSG C
H/T	Herron	25-35%	HSG C
H/U	Herron	0-3%	HSG C
H/V	Herron	3-8%	HSG C
H/W	Herron	8-15%	HSG C
H/X	Herron	15-25%	HSG C
H/Y	Herron	25-35%	HSG C
H/Z	Herron	0-3%	HSG C



PROJECT LOCATION MAP  
 0 400  
 800 feet

#### LEGEND

Symbol	Description
..... 19'5"	EXISTING 10 FT CONTOUR
-----	EXISTING 2 FT CONTOUR
-----	PROPERTY LINE
-----	STREAM/WATERCOURSE
-----	UTILITY POLE
-----	SOIL BOUNDARY
-----	SOIL TYPE
-----	SILT FENCE
-----	LIMIT OF DISTURBANCE
-----	WIND TURBINE

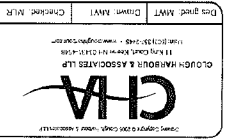


G-5

- NOTES:**
- OWNER/DEVELOPER: LEMPSTER WIND, LLC  
100 STAFFORD AVE., SUITE 100  
WAYNE, PA 19087
  - SITE DATA: TOTAL DISTURBED AREA = 25 AC
  - TOPOGRAPHY DATA BASED UPON A SURVEY COMPILED BY CHA.
  - CALL FOR SETBACKS AT 100 FT FROM THE CENTER OF THE WIND TURBINE. THESE SETBACKS ARE TO BE MAINTAINED THROUGHOUT THE CONSTRUCTION PERIOD AND ALL UTILITIES MARKED IN THE AREA OF WORK.
  - LEMPSTER WIND, LLC HAS RESERVED THE RIGHT TO MAKE FIELD CHANGES AS DEEMED NECESSARY BY ITS ENGINEER.
  - ALL DISTURBED TOPSOIL SHALL BE SAVED AND STOCKPILED FOR LATER USE.
  - SEE SPECIFICATIONS FOR PERMANENT SEEDING REQUIREMENTS.
  - THE LOCATIONS OF EXISTING UTILITIES SHOWN ON THE PLANS ARE BASED ON THE BEST AVAILABLE INFORMATION. LEMPSTER WIND, LLC DOES NOT WARRANT THE ACCURACY OF THE LOCATIONS OF EXISTING UTILITIES. LEMPSTER WIND, LLC WILL ALLOW FOR UTILITIES TO BE FOUND AND DELETED FROM THE PLANS AND PROFILE DRAWINGS. LEMPSTER WIND, LLC DOES NOT GUARANTEE THAT ALL UTILITIES SHOWN ON THE PLANS WILL BE FOUND.
  - MAINTENANCE AND OTHER SIMILAR SERVICES SHALL BE USED WHERE CROSSINGS OF WELAND WELLS MUST BE RESTORED AFTER TRENCHING AND BACKFILLING. ANY EXCESS FILL MATERIAL MUST BE PLACED IN A DESIGNATED AREA AND MUST BE COVERED WITH TOPSOIL AND MULCH TO ALLOW FOR VEGETATION TO RE-ESTABLISH. VEGETATION SHALL BE PERMITTED IN ACCORDANCE WITH BEST CONSTRUCTION METHODS.
  - DEPOSITION OF EXCAVATED OR EXCAVATED MATERIAL AND ALL EARTHWORK OPERATIONS WILL BE CARRIED OUT IN SUCH A WAY AS TO MINIMIZE EROSION OF THE MATERIAL AND TO MAINTAIN THE STABILITY OF THE ADJACENT WELANDS AND WATERCOURSES. A COPY OF THE EROSION AND SEDIMENTATION CONTROL REPORT AND PLANS MUST BE POSTED AT THE CONSTRUCTION SITE IN ACCORDANCE WITH NEW HAMPSHIRE STATE LAW.
  - THE USE OF EXCESS MATERIAL FROM THE CONSTRUCTION OF THE WIND TURBINE SHALL BE COMPLETED THROUGH THE USE OF MECHANICAL OR HAND TOOLS, BUT MUST NEVER BE WASHED OFF THE ROAD BY THE USE OF WATER.
  - SEDIMENT REMOVED FROM THE EROSION CONTROL FACILITIES SHALL BE DISPOSED OF IN ACCORDANCE WITH THE REQUIREMENTS OF THE NEW HAMPSHIRE DEPARTMENT OF ENVI- RONMENTAL PROTECTION. SUPPORT C PROTECTION OF NATURAL RESOURCES, ARTICLE III, WATER RESOURCES, CHAPTER 102, ENVI- RONMENTAL CONTROL.

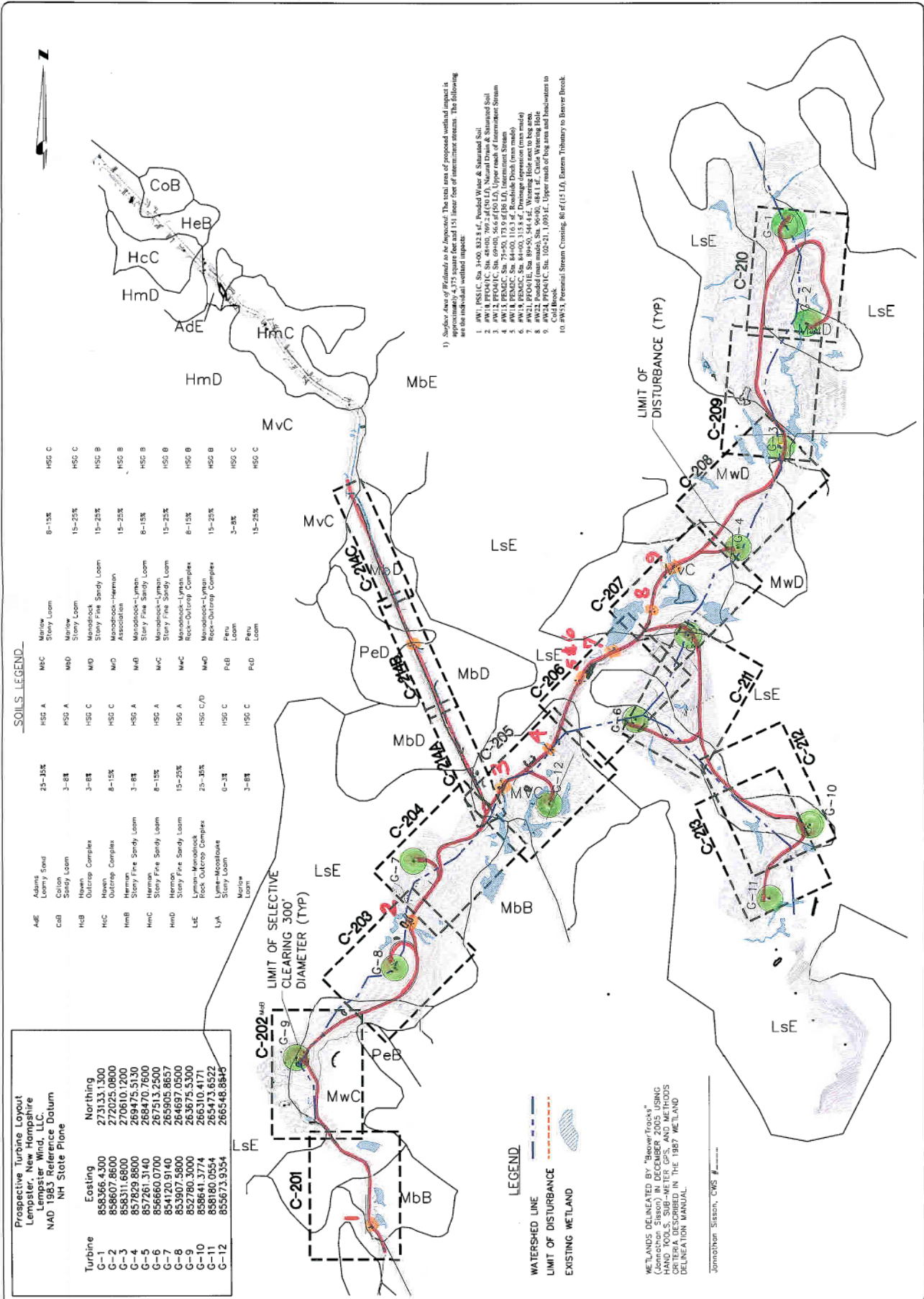
NO.	DATE	DESCRIPTION
1	4/11/06	ISSUED FOR SITE SPECIFIC REVIEW
2		
3		
4		
5		

LEMPSTER WIND, LLC  
 150 STRAFFORD AVENUE  
 SUITE 110  
 WAYNE, PA 19087



PROJECT NO.	19027
DATE PLOTTED	4/11/06
SCALE	AS NOTED
SHEET NO.	1
TOTAL SHEETS	1
PROJECT NAME	LEMPSTER MOUNTAIN WIND POWER PROJECT
INDEX PLAN	

**C-001**



SOILS LEGEND

Soil Code	Soil Name	Depth	Parent Material	Soil Series
H5G A	Adams Loamy Sand	25-35%	MSC	Marlow Stony Loom
H5G B	Colton Sandy Loom	3-8"	M8D	Marlow Stony Loom
H5G C	Haven Outcrop Complex	3-8"	M8D	Marlow Stony Loom
H5G D	Haven Outcrop Complex	8-15%	M8D	Marlow Stony Loom
H5G E	Hermon	3-8"	M8D	Marlow Stony Loom
H5G F	Hermon	8-15%	M8D	Marlow Stony Loom
H5G G	Hermon	15-25%	M8D	Marlow Stony Loom
H5G H	Lyme-Mooselake	3-8"	M8D	Marlow Stony Loom
H5G I	Marlow Loom	3-8"	M8D	Marlow Stony Loom
H5G J	Marlow Loom	15-25%	M8D	Marlow Stony Loom

Prospective Turbine's Layout  
Lempester, New Hampshire  
Lempester Wind, LLC  
NAD 1983 Reference Datum  
NH State Plane

Turbine	Eastings	Northings
G-1	858366.4300	273133.1300
G-2	858607.8600	272025.0800
G-3	858311.6800	270810.1200
G-4	857829.8800	269475.3130
G-5	857261.3140	268470.7600
G-6	856660.0700	267513.6200
G-7	854120.9140	267469.8500
G-8	853907.3000	265875.5300
G-9	85266.3774	266310.4171
G-10	858180.0564	265473.6522
G-11	855673.9354	266548.8845
G-12		

- 1) Shadow Area of Wetlands as to be Impacted: The total area of proposed wetland impact is shown in grey. The total area of wetland impact is shown in grey. The following are the individual wetland impacts:
- AW1: PFOA1C, Sta. 4400, 832.8' x 4', Ponds White & Sunnyside Soil
  - AW2: PFOA1C, Sta. 4400, 760.2' x 4' (SUN), Normal Drain & Starved Soil
  - AW3: PFOA1C, Sta. 6940, 56.6' x 150' LD, Upper reach of Intermittent Stream
  - AW4: PFOA1C, Sta. 7540, 173.9' x 100' LD, Intermittent Stream
  - AW5: PFOA1C, Sta. 8140, 115.8' x 4', Drainage separation (non mead)
  - AW6: PFOA1C, Sta. 8140, 115.8' x 4', Drainage separation (non mead)
  - AW7: PFOA1E, Sta. 8940, 544.4' x 4', Wetland (flood tract to bog area)
  - AW8: PFOA1E, Sta. 8940, 544.4' x 4', Wetland (flood tract to bog area)
  - AW9: PFOA1E, Sta. 8940, 544.4' x 4', Wetland (flood tract to bog area)
  - AW10: PFOA1E, Sta. 8940, 544.4' x 4', Wetland (flood tract to bog area)
  - AW11: PFOA1E, Sta. 8940, 544.4' x 4', Wetland (flood tract to bog area)
  - AW12: PFOA1E, Sta. 8940, 544.4' x 4', Wetland (flood tract to bog area)
  - AW13: PFOA1E, Sta. 8940, 544.4' x 4', Wetland (flood tract to bog area)
  - AW14: PFOA1E, Sta. 8940, 544.4' x 4', Wetland (flood tract to bog area)
  - AW15: PFOA1E, Sta. 8940, 544.4' x 4', Wetland (flood tract to bog area)
  - AW16: PFOA1E, Sta. 8940, 544.4' x 4', Wetland (flood tract to bog area)
  - AW17: PFOA1E, Sta. 8940, 544.4' x 4', Wetland (flood tract to bog area)
  - AW18: PFOA1E, Sta. 8940, 544.4' x 4', Wetland (flood tract to bog area)
  - AW19: PFOA1E, Sta. 8940, 544.4' x 4', Wetland (flood tract to bog area)
  - AW20: PFOA1E, Sta. 8940, 544.4' x 4', Wetland (flood tract to bog area)
  - AW21: PFOA1E, Sta. 8940, 544.4' x 4', Wetland (flood tract to bog area)
  - AW22: PFOA1E, Sta. 8940, 544.4' x 4', Wetland (flood tract to bog area)
  - AW23: PFOA1E, Sta. 8940, 544.4' x 4', Wetland (flood tract to bog area)
  - AW24: PFOA1E, Sta. 8940, 544.4' x 4', Wetland (flood tract to bog area)
  - AW25: PFOA1E, Sta. 8940, 544.4' x 4', Wetland (flood tract to bog area)
  - AW26: PFOA1E, Sta. 8940, 544.4' x 4', Wetland (flood tract to bog area)
  - AW27: PFOA1E, Sta. 8940, 544.4' x 4', Wetland (flood tract to bog area)
  - AW28: PFOA1E, Sta. 8940, 544.4' x 4', Wetland (flood tract to bog area)
  - AW29: PFOA1E, Sta. 8940, 544.4' x 4', Wetland (flood tract to bog area)
  - AW30: PFOA1E, Sta. 8940, 544.4' x 4', Wetland (flood tract to bog area)
  - AW31: PFOA1E, Sta. 8940, 544.4' x 4', Wetland (flood tract to bog area)
  - AW32: PFOA1E, Sta. 8940, 544.4' x 4', Wetland (flood tract to bog area)
  - AW33: PFOA1E, Sta. 8940, 544.4' x 4', Wetland (flood tract to bog area)
  - AW34: PFOA1E, Sta. 8940, 544.4' x 4', Wetland (flood tract to bog area)
  - AW35: PFOA1E, Sta. 8940, 544.4' x 4', Wetland (flood tract to bog area)
  - AW36: PFOA1E, Sta. 8940, 544.4' x 4', Wetland (flood tract to bog area)
  - AW37: PFOA1E, Sta. 8940, 544.4' x 4', Wetland (flood tract to bog area)
  - AW38: PFOA1E, Sta. 8940, 544.4' x 4', Wetland (flood tract to bog area)
  - AW39: PFOA1E, Sta. 8940, 544.4' x 4', Wetland (flood tract to bog area)
  - AW40: PFOA1E, Sta. 8940, 544.4' x 4', Wetland (flood tract to bog area)
  - AW41: PFOA1E, Sta. 8940, 544.4' x 4', Wetland (flood tract to bog area)
  - AW42: PFOA1E, Sta. 8940, 544.4' x 4', Wetland (flood tract to bog area)
  - AW43: PFOA1E, Sta. 8940, 544.4' x 4', Wetland (flood tract to bog area)
  - AW44: PFOA1E, Sta. 8940, 544.4' x 4', Wetland (flood tract to bog area)
  - AW45: PFOA1E, Sta. 8940, 544.4' x 4', Wetland (flood tract to bog area)
  - AW46: PFOA1E, Sta. 8940, 544.4' x 4', Wetland (flood tract to bog area)
  - AW47: PFOA1E, Sta. 8940, 544.4' x 4', Wetland (flood tract to bog area)
  - AW48: PFOA1E, Sta. 8940, 544.4' x 4', Wetland (flood tract to bog area)
  - AW49: PFOA1E, Sta. 8940, 544.4' x 4', Wetland (flood tract to bog area)
  - AW50: PFOA1E, Sta. 8940, 544.4' x 4', Wetland (flood tract to bog area)
  - AW51: PFOA1E, Sta. 8940, 544.4' x 4', Wetland (flood tract to bog area)
  - AW52: PFOA1E, Sta. 8940, 544.4' x 4', Wetland (flood tract to bog area)
  - AW53: PFOA1E, Sta. 8940, 544.4' x 4', Wetland (flood tract to bog area)
  - AW54: PFOA1E, Sta. 8940, 544.4' x 4', Wetland (flood tract to bog area)
  - AW55: PFOA1E, Sta. 8940, 544.4' x 4', Wetland (flood tract to bog area)
  - AW56: PFOA1E, Sta. 8940, 544.4' x 4', Wetland (flood tract to bog area)
  - AW57: PFOA1E, Sta. 8940, 544.4' x 4', Wetland (flood tract to bog area)
  - AW58: PFOA1E, Sta. 8940, 544.4' x 4', Wetland (flood tract to bog area)
  - AW59: PFOA1E, Sta. 8940, 544.4' x 4', Wetland (flood tract to bog area)
  - AW60: PFOA1E, Sta. 8940, 544.4' x 4', Wetland (flood tract to bog area)
  - AW61: PFOA1E, Sta. 8940, 544.4' x 4', Wetland (flood tract to bog area)
  - AW62: PFOA1E, Sta. 8940, 544.4' x 4', Wetland (flood tract to bog area)
  - AW63: PFOA1E, Sta. 8940, 544.4' x 4', Wetland (flood tract to bog area)
  - AW64: PFOA1E, Sta. 8940, 544.4' x 4', Wetland (flood tract to bog area)
  - AW65: PFOA1E, Sta. 8940, 544.4' x 4', Wetland (flood tract to bog area)
  - AW66: PFOA1E, Sta. 8940, 544.4' x 4', Wetland (flood tract to bog area)
  - AW67: PFOA1E, Sta. 8940, 544.4' x 4', Wetland (flood tract to bog area)
  - AW68: PFOA1E, Sta. 8940, 544.4' x 4', Wetland (flood tract to bog area)
  - AW69: PFOA1E, Sta. 8940, 544.4' x 4', Wetland (flood tract to bog area)
  - AW70: PFOA1E, Sta. 8940, 544.4' x 4', Wetland (flood tract to bog area)
  - AW71: PFOA1E, Sta. 8940, 544.4' x 4', Wetland (flood tract to bog area)
  - AW72: PFOA1E, Sta. 8940, 544.4' x 4', Wetland (flood tract to bog area)
  - AW73: PFOA1E, Sta. 8940, 544.4' x 4', Wetland (flood tract to bog area)
  - AW74: PFOA1E, Sta. 8940, 544.4' x 4', Wetland (flood tract to bog area)
  - AW75: PFOA1E, Sta. 8940, 544.4' x 4', Wetland (flood tract to bog area)
  - AW76: PFOA1E, Sta. 8940, 544.4' x 4', Wetland (flood tract to bog area)
  - AW77: PFOA1E, Sta. 8940, 544.4' x 4', Wetland (flood tract to bog area)
  - AW78: PFOA1E, Sta. 8940, 544.4' x 4', Wetland (flood tract to bog area)
  - AW79: PFOA1E, Sta. 8940, 544.4' x 4', Wetland (flood tract to bog area)
  - AW80: PFOA1E, Sta. 8940, 544.4' x 4', Wetland (flood tract to bog area)
  - AW81: PFOA1E, Sta. 8940, 544.4' x 4', Wetland (flood tract to bog area)
  - AW82: PFOA1E, Sta. 8940, 544.4' x 4', Wetland (flood tract to bog area)
  - AW83: PFOA1E, Sta. 8940, 544.4' x 4', Wetland (flood tract to bog area)
  - AW84: PFOA1E, Sta. 8940, 544.4' x 4', Wetland (flood tract to bog area)
  - AW85: PFOA1E, Sta. 8940, 544.4' x 4', Wetland (flood tract to bog area)
  - AW86: PFOA1E, Sta. 8940, 544.4' x 4', Wetland (flood tract to bog area)
  - AW87: PFOA1E, Sta. 8940, 544.4' x 4', Wetland (flood tract to bog area)
  - AW88: PFOA1E, Sta. 8940, 544.4' x 4', Wetland (flood tract to bog area)
  - AW89: PFOA1E, Sta. 8940, 544.4' x 4', Wetland (flood tract to bog area)
  - AW90: PFOA1E, Sta. 8940, 544.4' x 4', Wetland (flood tract to bog area)
  - AW91: PFOA1E, Sta. 8940, 544.4' x 4', Wetland (flood tract to bog area)
  - AW92: PFOA1E, Sta. 8940, 544.4' x 4', Wetland (flood tract to bog area)
  - AW93: PFOA1E, Sta. 8940, 544.4' x 4', Wetland (flood tract to bog area)
  - AW94: PFOA1E, Sta. 8940, 544.4' x 4', Wetland (flood tract to bog area)
  - AW95: PFOA1E, Sta. 8940, 544.4' x 4', Wetland (flood tract to bog area)
  - AW96: PFOA1E, Sta. 8940, 544.4' x 4', Wetland (flood tract to bog area)
  - AW97: PFOA1E, Sta. 8940, 544.4' x 4', Wetland (flood tract to bog area)
  - AW98: PFOA1E, Sta. 8940, 544.4' x 4', Wetland (flood tract to bog area)
  - AW99: PFOA1E, Sta. 8940, 544.4' x 4', Wetland (flood tract to bog area)
  - AW100: PFOA1E, Sta. 8940, 544.4' x 4', Wetland (flood tract to bog area)

WATERSHED LINE  
LIMIT OF DISTURBANCE  
EXISTING WETLAND

WETLANDS DELINEATED BY "BeaverTracks"  
(Jonathan Sisson) IN DECEMBER 2005 USING  
HAND TOOLS, SUB-METER GPS, AND METHODS  
CRITERIA DESCRIBED IN THE 1987 WETLAND  
DELINEATION MANUAL.

Jonathan Sisson, CWS #



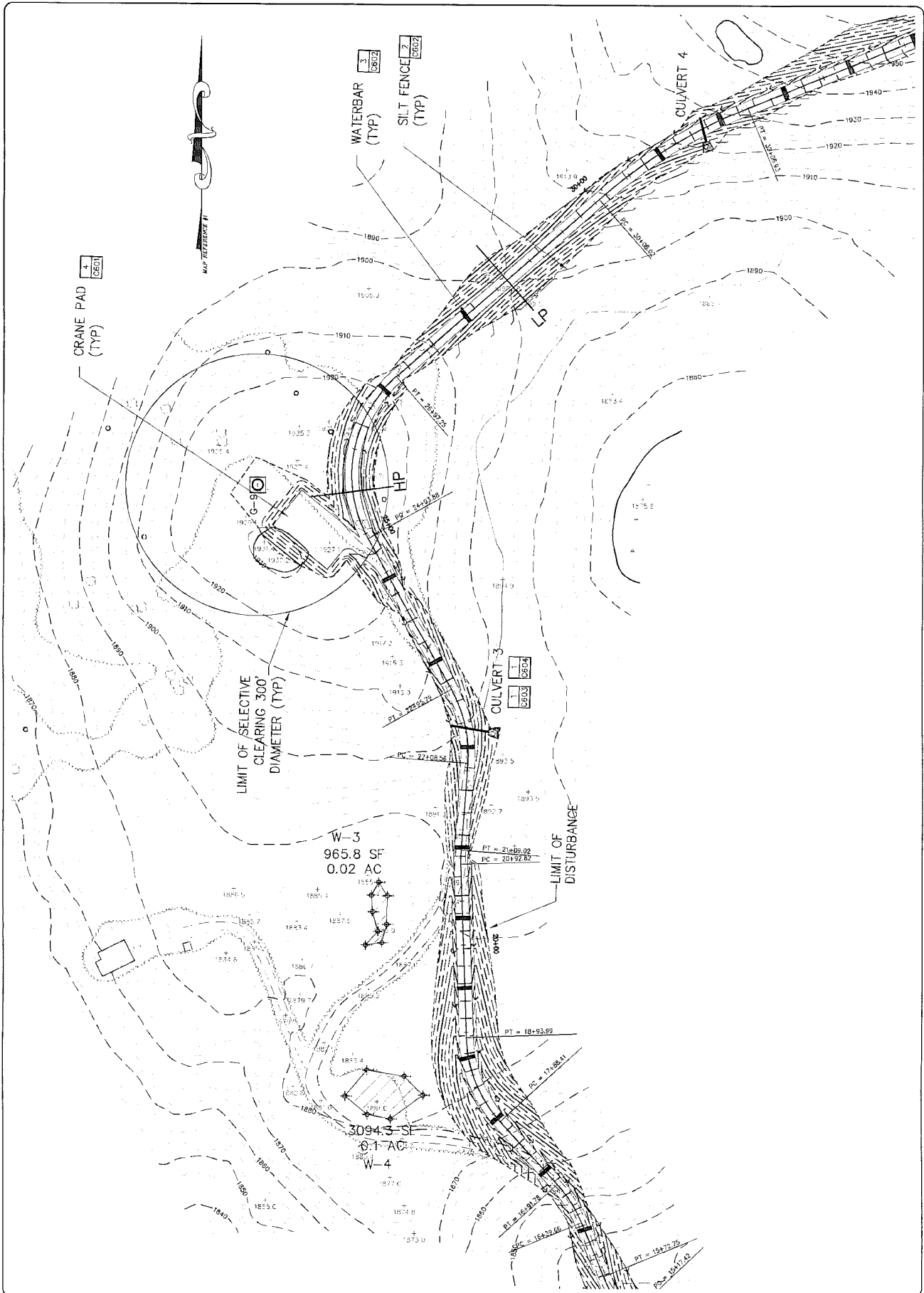
DATE	DESCRIPTION	BY
11/14/16	ISSUED FOR SITE SPECIFIC REVIEW	RFK
11/14/16		

LEMPSTER WIND, LLC  
 150 STRAFORD AVENUE  
 SUITE 110  
 WAYNE, PA 19087



LEMPSTER MOUNTAIN WIND FARM  
 EROSION CONTROL PLAN

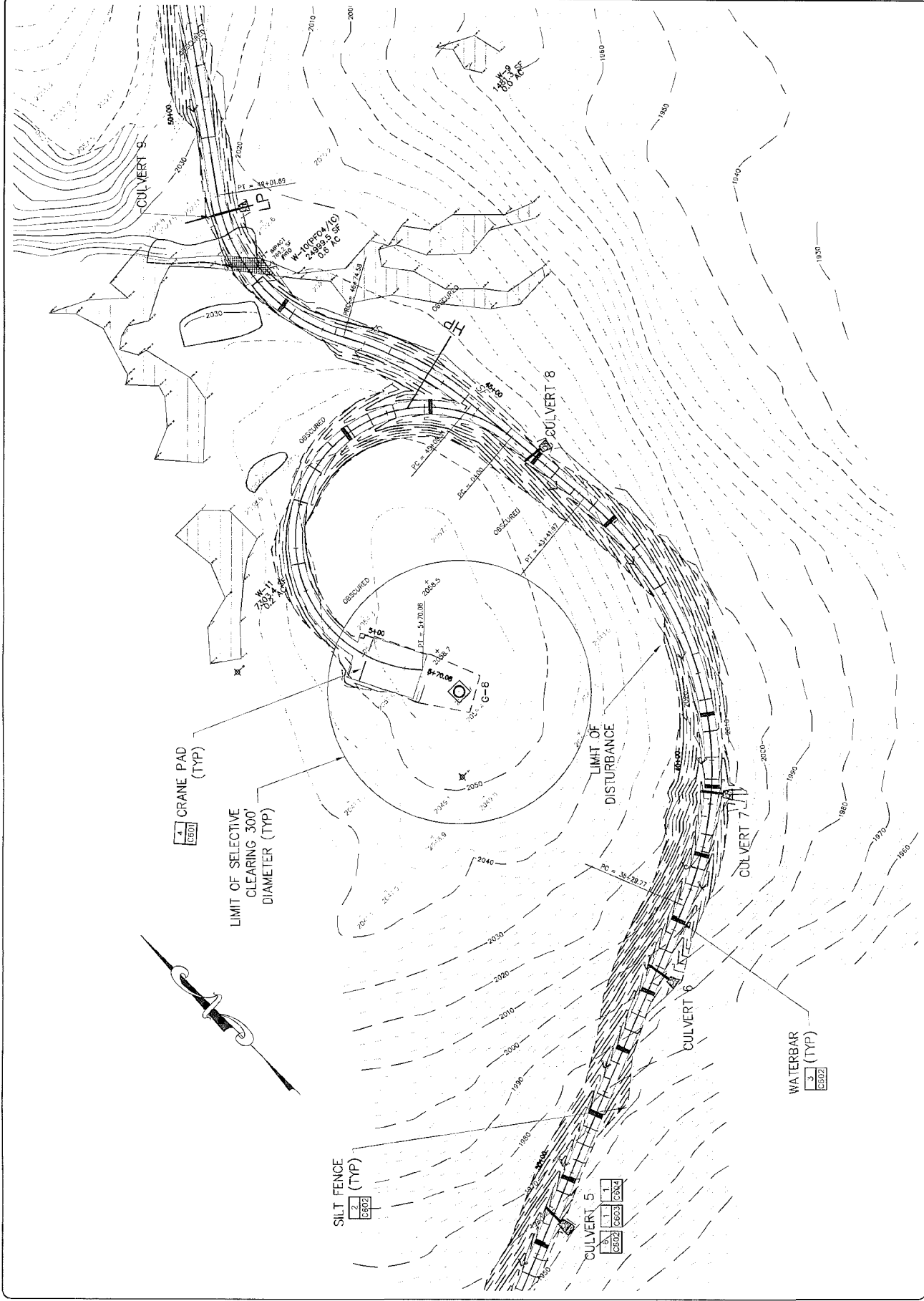
**C-202**





LEMPSTER WIND, LLC  
150 STRAFORD AVENUE  
SUITE 110  
WAYNE, PA 19087

NO.	DATE	DESCRIPTION
1	4/14/06	ISSUED FOR SITE SPECIFIC REVIEW
2		
3		
4		
5		
6		
7		
8		
9		
10		



DATE	BY	REVISION
11/14/08	MLR/KOT	ISSUED FOR SITE SPECIFIC REVIEW

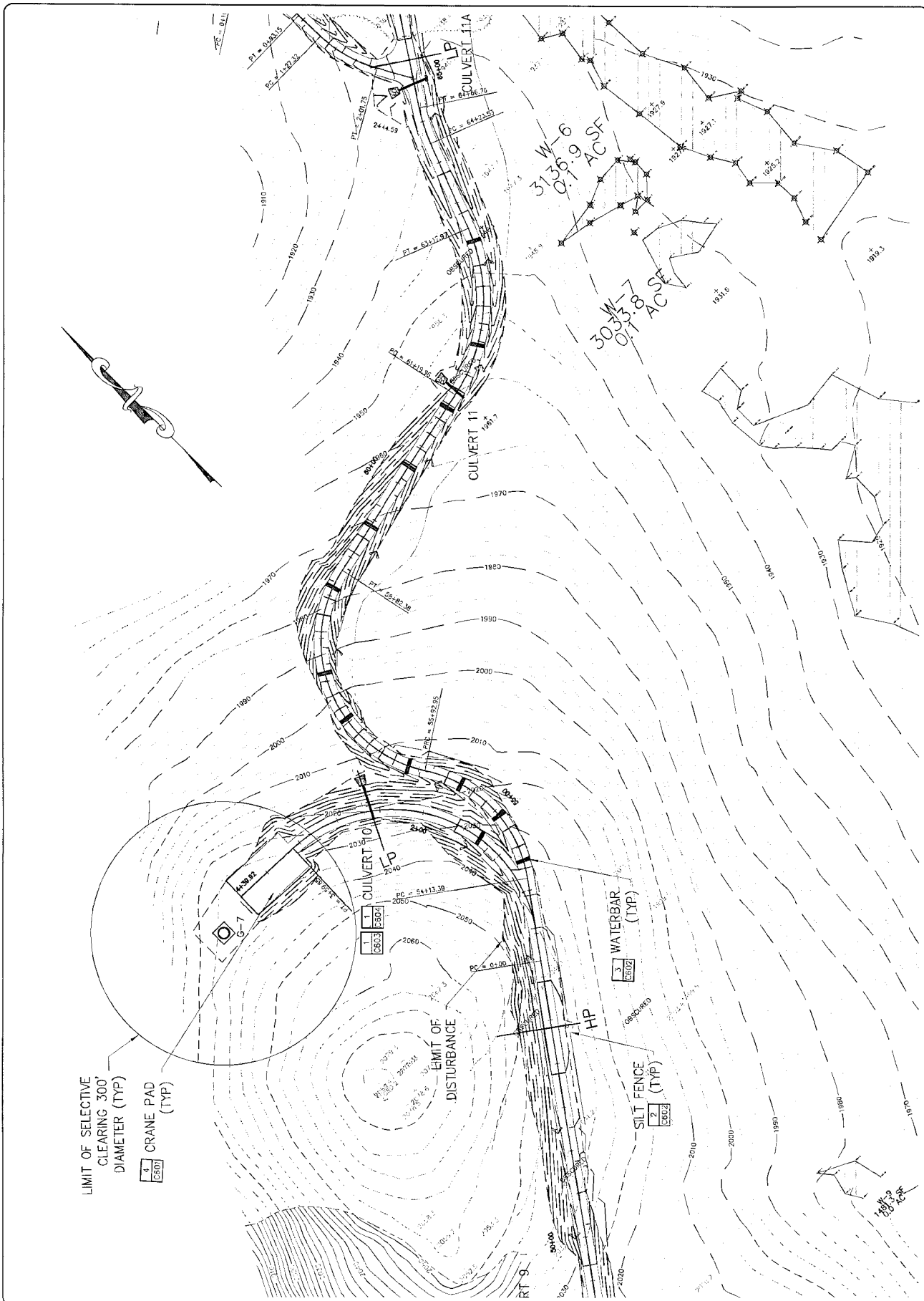
LEMPSTER WIND, LLC  
 150 STRAFORD AVENUE  
 SUITE 110  
 WAYNE, PA 19087



Checked: MLR  
 Drawn: MWT  
 Design: MWT  
**CH2M HILL**  
 CH2M HILL CONSULTANTS LLP  
 11 King Street, Suite 400  
 Philadelphia, PA 19106  
 (215) 382-1000  
 www.ch2mhill.com

LEMPSTER MOUNTAIN  
 WIND POWER PROJECT  
 LEMPSTER, NH  
 EROSION CONTROL PLAN  
 Project No: 1907  
 Scale: 1"=80'

**C-204**



LIMIT OF SELECTIVE  
 CLEARING 300'  
 DIAMETER (TYP)

4  
 CRANE PAD  
 (TYP)  
 C-7

LIMIT OF  
 DISTURBANCE

2  
 SILT FENCE  
 (TYP)  
 SFO2

3  
 WATERBAR  
 (TYP)  
 WB07

HP

RT 9

CULVERT 10

CULVERT 11

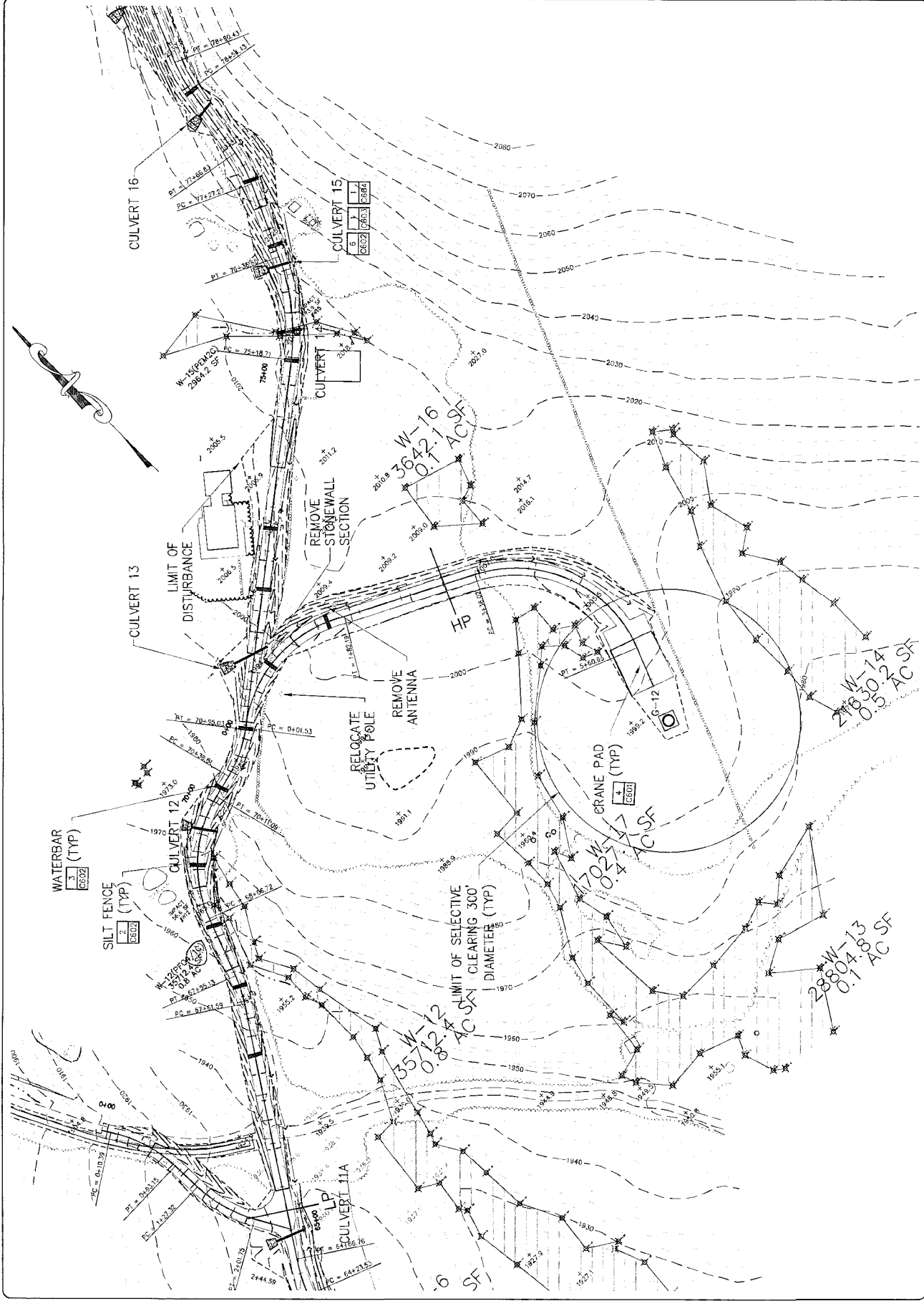
CULVERT 11A

31.36  
 AC SF

30.35  
 AC SF

168.9  
 AC SF

NO.	REVISION	DATE	BY
1	ISSUED FOR SITE SPECIFIC REVIEW	11/14/10	RJH



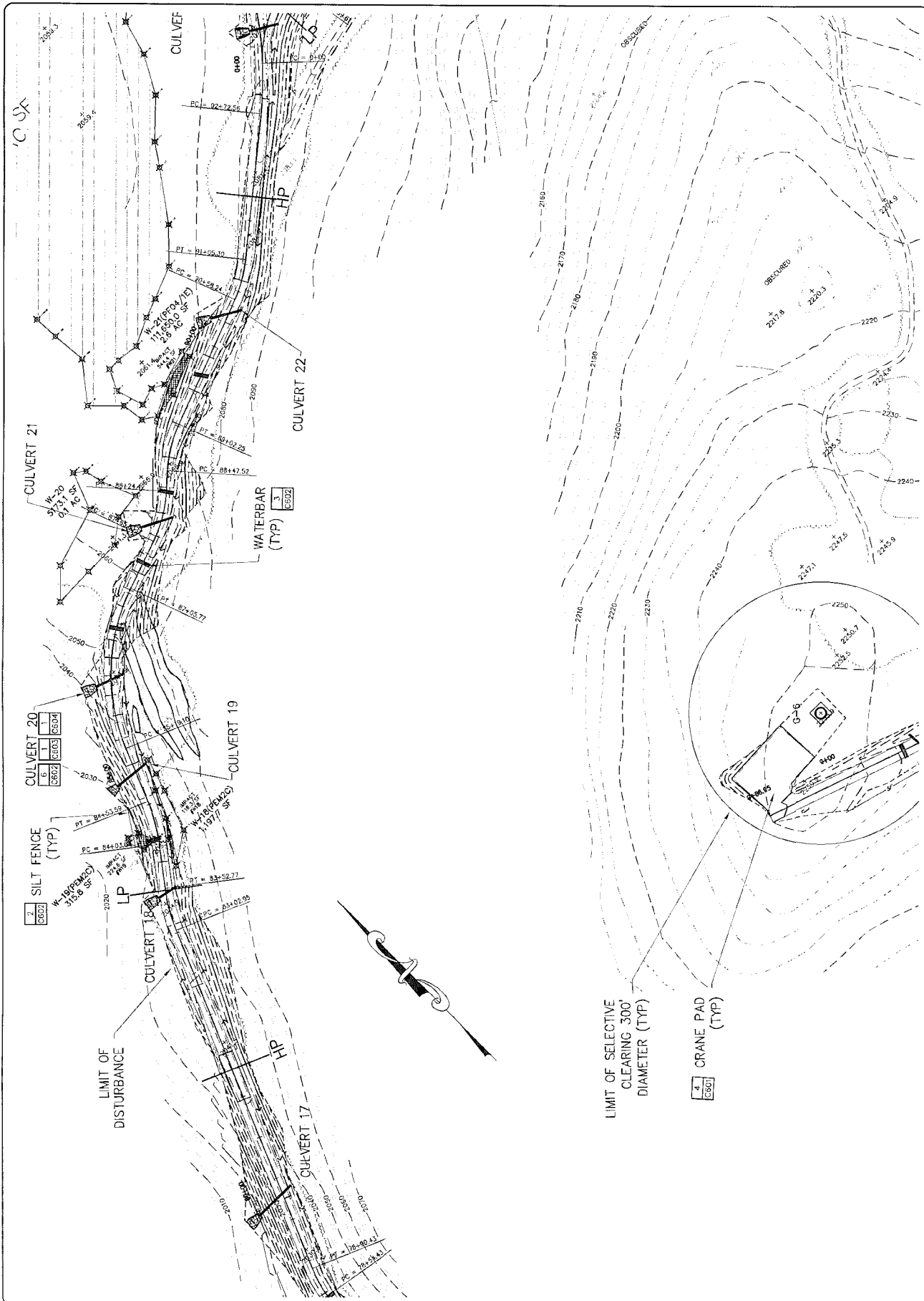
DATE	BY	CHKD	APP'D
11/14/06	...	...	...
SHEET NO. 1 OF 1			
PROJECT NO. 06-001			
SHEET TITLE: EROSION CONTROL PLAN			

LEMPSTER WIND, LLC  
 150 STRAFFORD AVENUE  
 SUITE 110  
 WAYNE, PA 19087

CHVA  
 CONSULTING ENGINEERS & ARCHITECTS, L.P.  
 11 KING CHARLES DRIVE, SUITE 100  
 WEST HAVEN, CONNECTICUT 06457  
 (203) 426-1111  
 www.chva.com

LEMPSTER MOUNTAIN  
 WIND POWER PROJECT  
 LEMPSTER, NH  
 EROSION CONTROL PLAN  
 SCALE: 1"=50'  
 PROJECT NO.: 06-001

**C-206**



LIMIT OF SELECTIVE CLEARING 300' DIAMETER (TYP)

CRANE PAD (TYP)

LIMIT OF DISTURBANCE

SILT FENCE (TYP)

WATERBAR (TYP)

CULVERT 21

CULVERT 22

CULVERT 19

CULVERT 18

CULVERT 17

C 3X



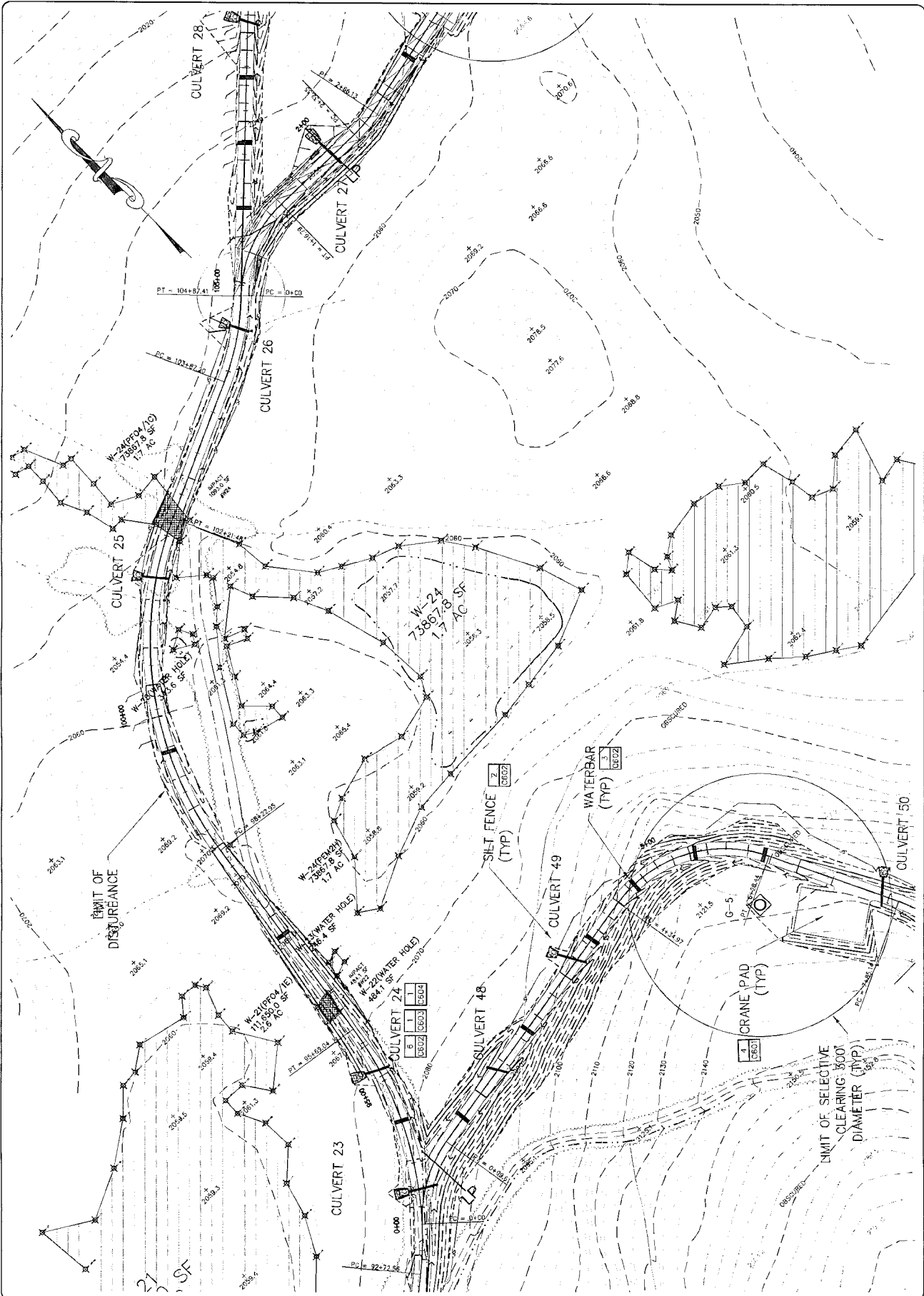
NO.	REVISION
	ISSUED FOR SITE SPECIFIC REVIEW
DATE	BY

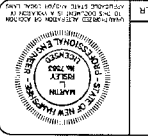
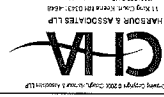
LEMPSTER WIND, LLC  
 150 STRAFORD AVENUE  
 SUITE 110  
 WAYNE, PA 19087



LEMPSTER MOUNTAIN WIND POWER PROJECT  
 LEMPSTER, NH  
 EROSION CONTROL PLAN  
 Sheet: 102  
 Project No: 102

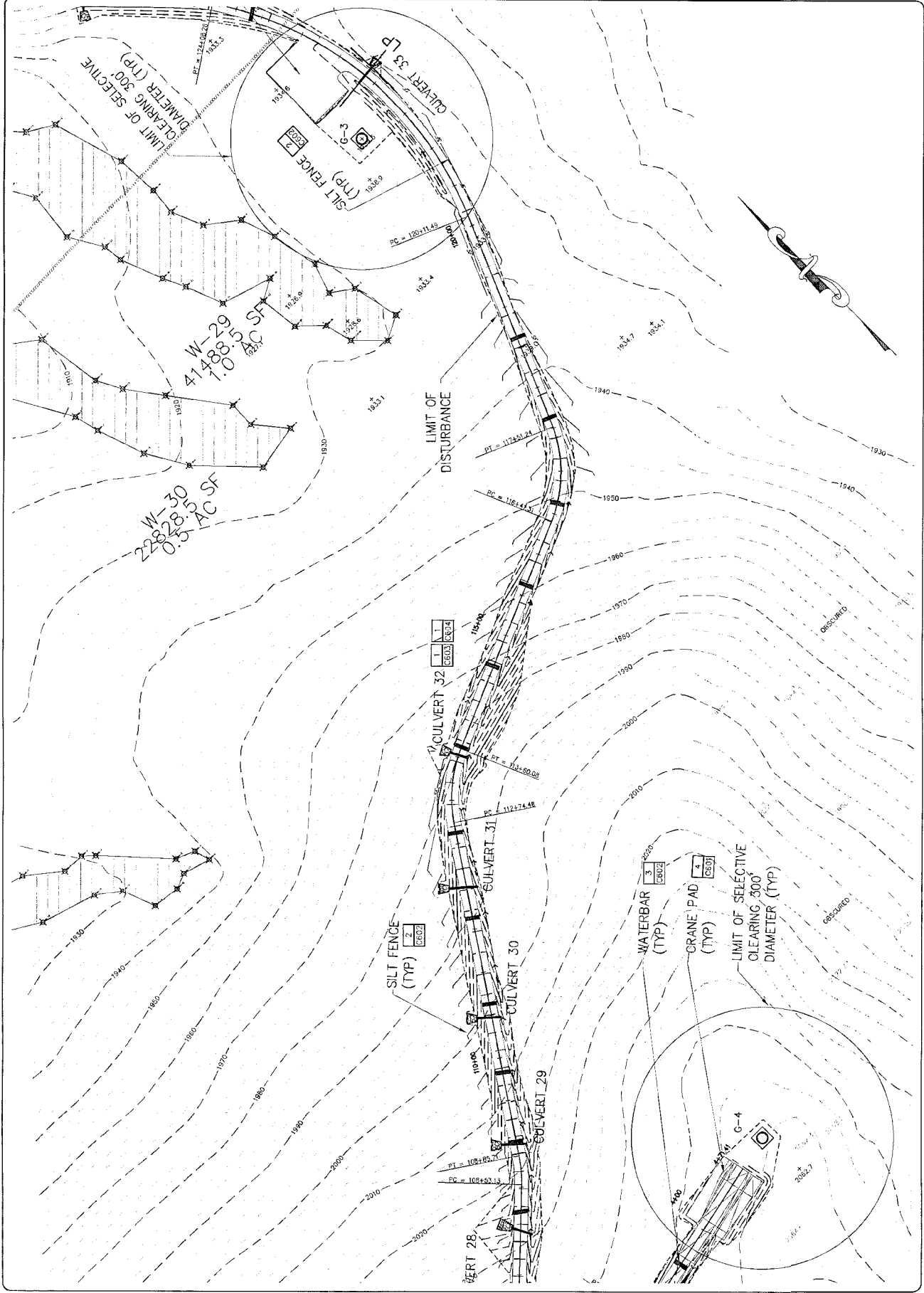
**C-207**





LEMPSTER WIND, LLC  
150 STRAFORD AVENUE  
SUITE 110  
WAYNE, PA 19087

NO.	DATE	DESCRIPTION
1	1/14/09	ISSUED FOR SITE SPECIFIC REVIEW
2		
3		
4		
5		
6		
7		
8		
9		
10		



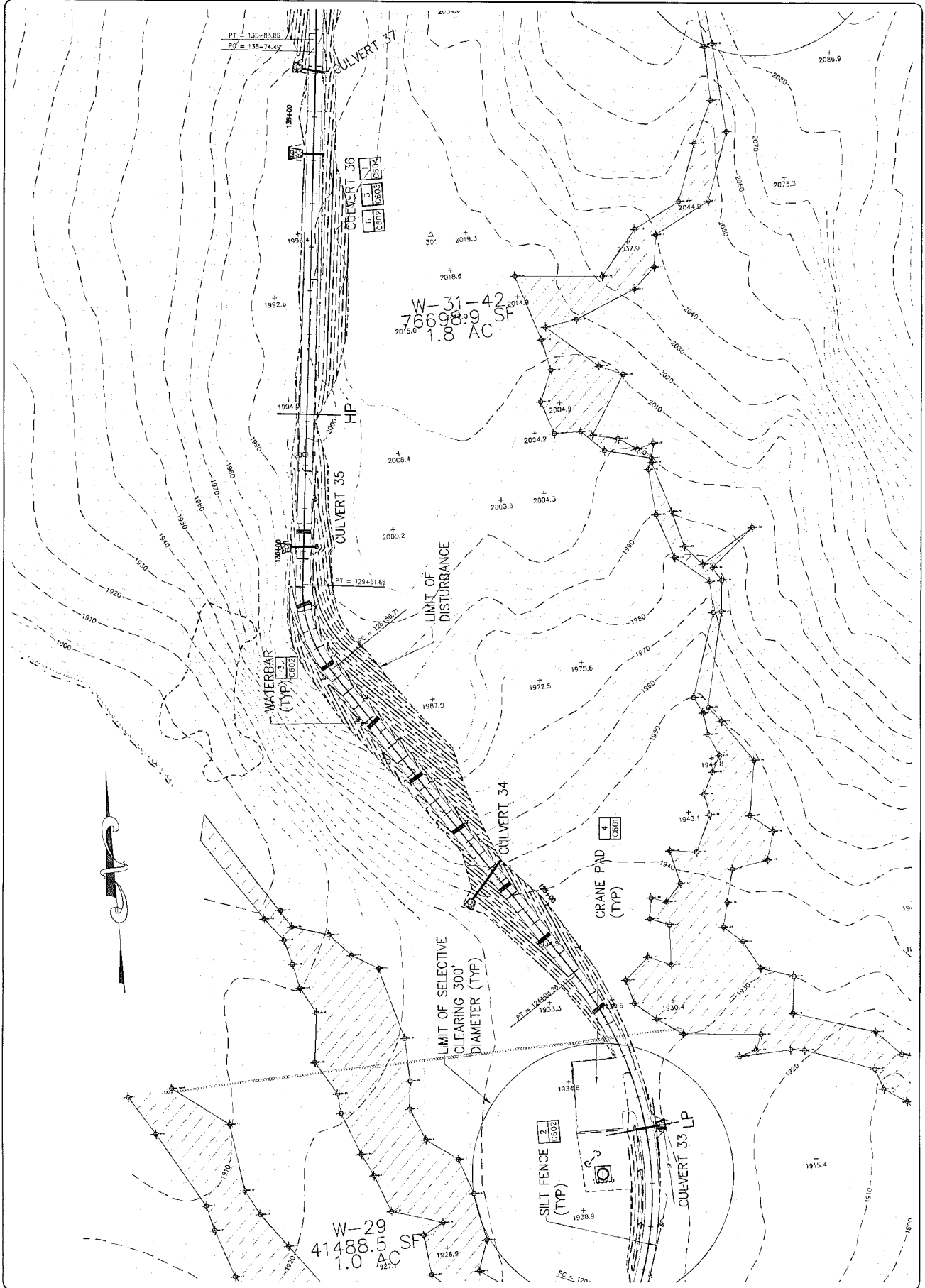
LEMPSTER MOUNTAIN  
WIND POWER PROJECT  
LEMPSTER, NH  
EROSION CONTROL PLAN

Issue Date: 01/15/08  
Project No.: 1904  
Scale: 1"=30'



LEMPSTER WIND, LLC  
150 STRAFORD AVENUE  
WAYNE, PA 19087

NO.	REV.	DATE	DESCRIPTION
1		01/15/08	ISSUED FOR SITE SPECIFIC REVIEW
2			
3			
4			
5			



NO.	DATE	REVISION
1	10/1/08	ISSUED FOR SITE SPECIFIC REVIEW
2		
3		
4		
5		
6		
7		
8		
9		
10		

LEMPSTER WIND, LLC  
 150 STRAFORD AVENUE  
 SUITE 110  
 WAYNE, PA 19087

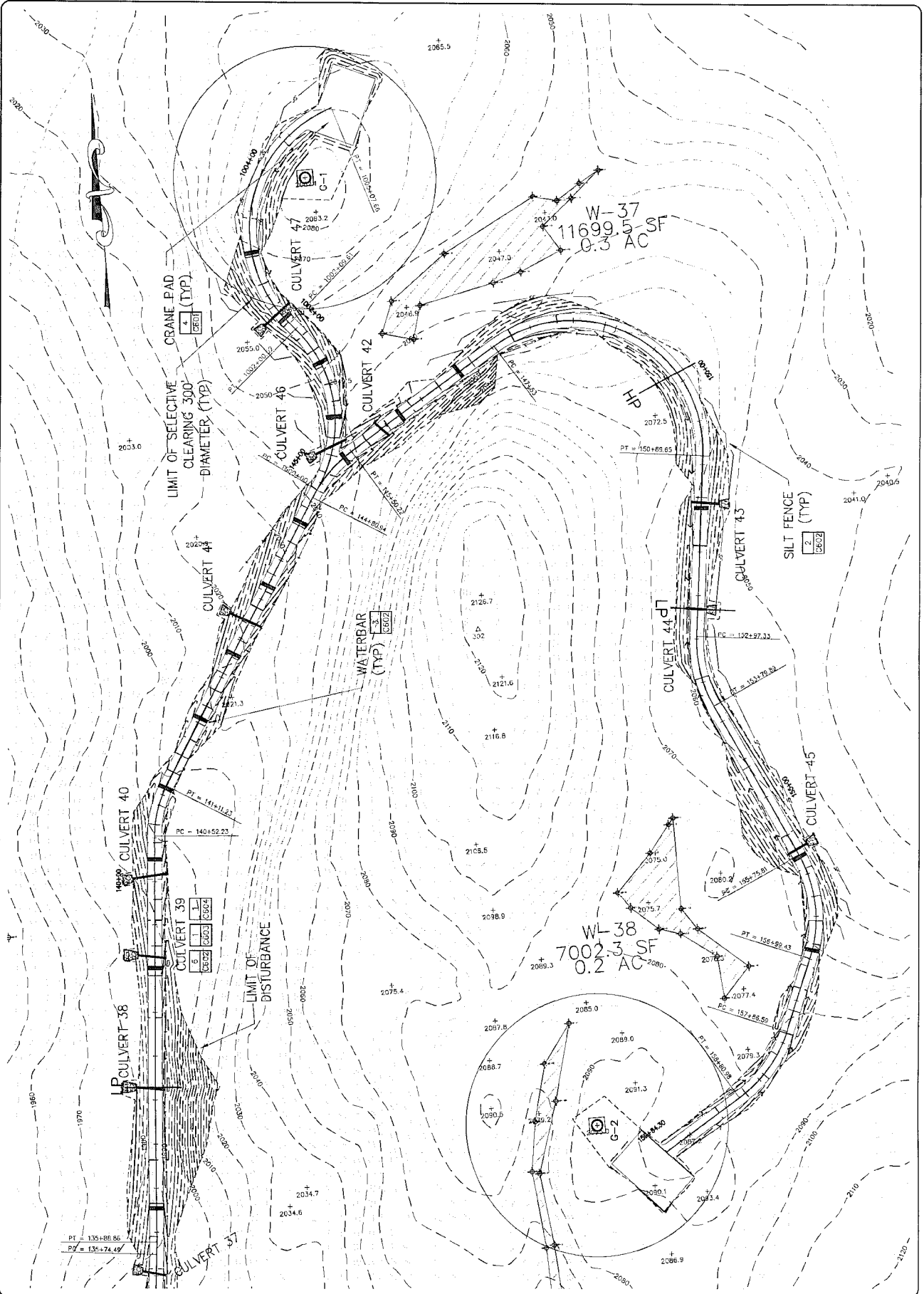
CLOUGH HARBOR & ASSOCIATES, L.P.  
 11 KING ROAD, SUITE 101  
 WESTPORT, PA 19380  
 PHONE: 610-666-1100  
 FAX: 610-666-1101  
 WWW: CHA.COM

DESIGNED BY: MNT  
 DRAWN BY: MNT  
 CHECKED BY: MNT

LEMPSTER MOUNTAIN  
 WIND POWER PROJECT  
 LEMPSTER, NH  
 EROSION CONTROL PLAN

Issue Date: 05/11/08  
 Project No.: 1321  
 Scale: 1"=50'

**C-210**



NO	DATE	DESCRIPTION
1	12/14/08	ISSUED FOR SITE SPECIFIC REVIEW
2	01/14/09	
3	02/11/09	

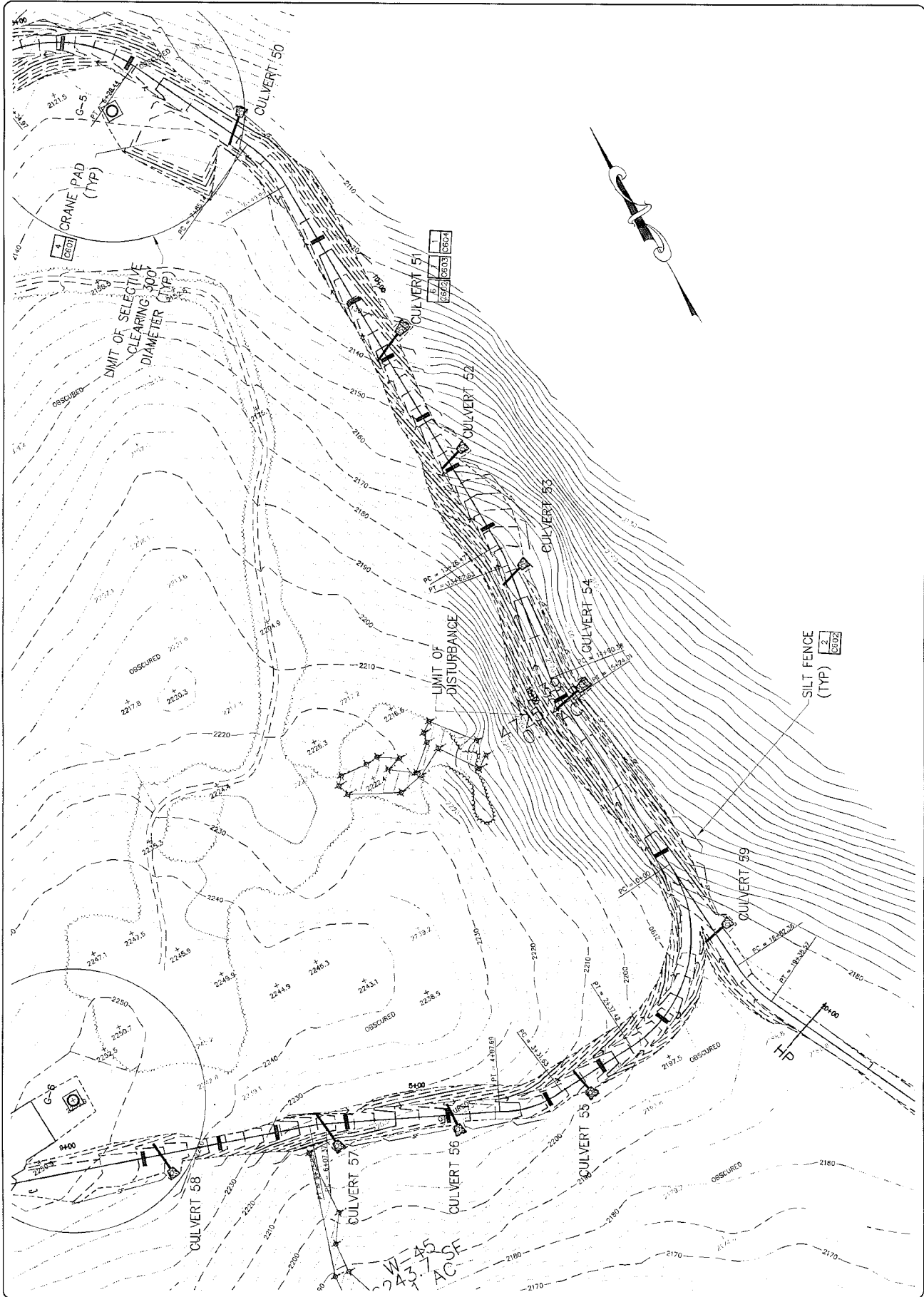
LEMPSTER WIND, LLC  
 150 STRAFFORD AVENUE  
 SUITE 110  
 WAYNE, PA 19087



Checked: MRS  
 Drawn: MWT  
 Design: MWT  
 CROWN HARBOR & ASSOCIATES LLP  
 11 King Charles Avenue, Suite 400  
 Philadelphia, PA 19106

LEMPSTER MOUNTAIN  
 WIND POWER PROJECT  
 LEMPSTER, NH  
 EROSION CONTROL PLAN  
 Scale: 1"=50'

**C-211**



DATE	DESCRIPTION
12/14/08	ISSUED FOR SITE SPECIFIC REVIEW
12/14/08	REVISION

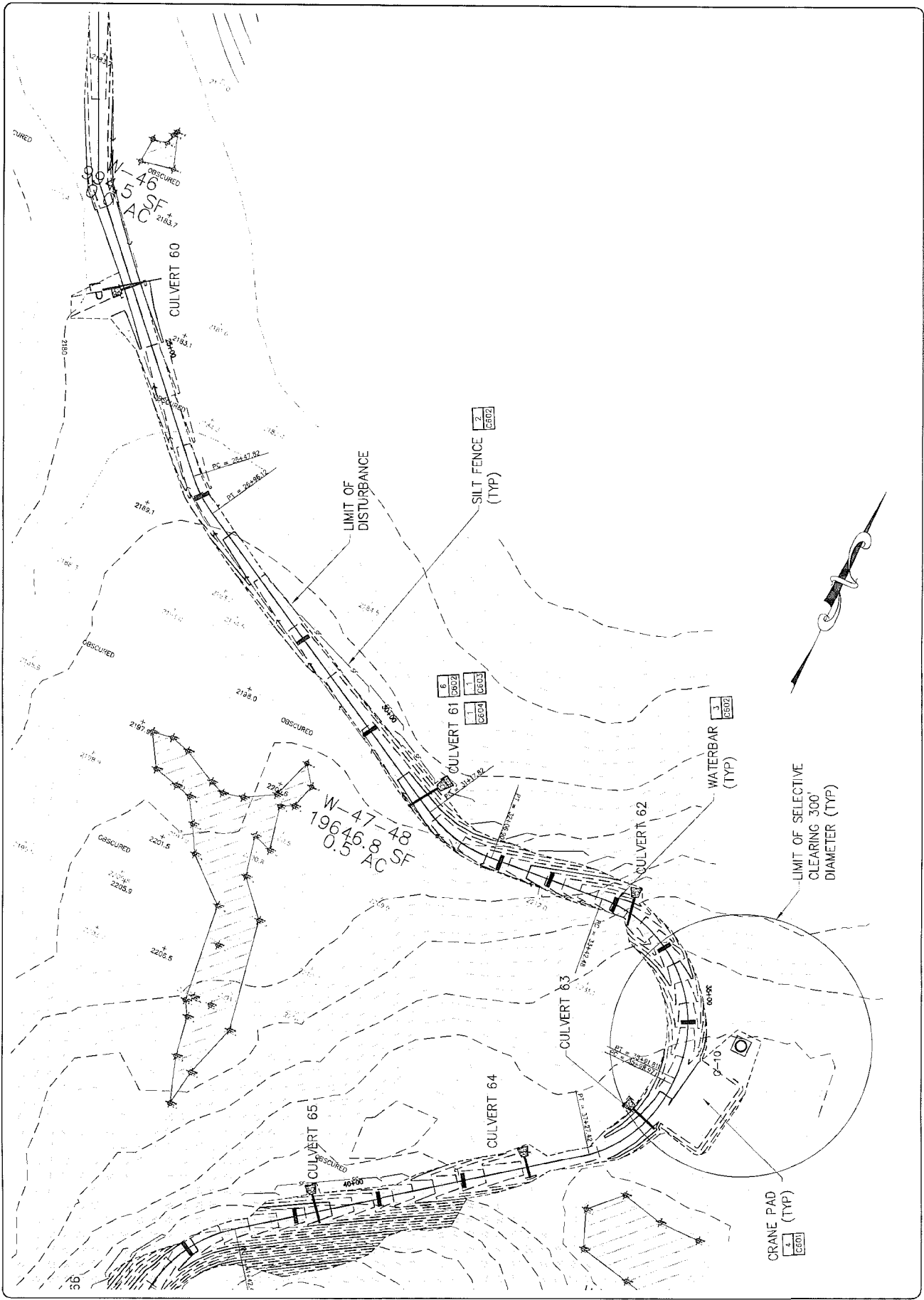
LEMPSTER WIND, LLC  
 150 STRAFFORD AVENUE  
 SUITE 110  
 WAYNE, PA 19087



**CHA**  
 GEORGE HARBOUR & ASSOCIATES, LLP  
 11 King Charles Square, Suite 1000  
 Philadelphia, PA 19107  
 Tel: (215) 251-1100  
 Fax: (215) 251-1101  
 www.cha-engineers.com

LEMPSTER MOUNTAIN  
 WIND POWER PROJECT  
 LEMPSTER, NH  
 EROSION CONTROL PLAN  
 Scale: 1"=50'  
 Project No.: 19021  
 Date: 12/14/08

**C-212**



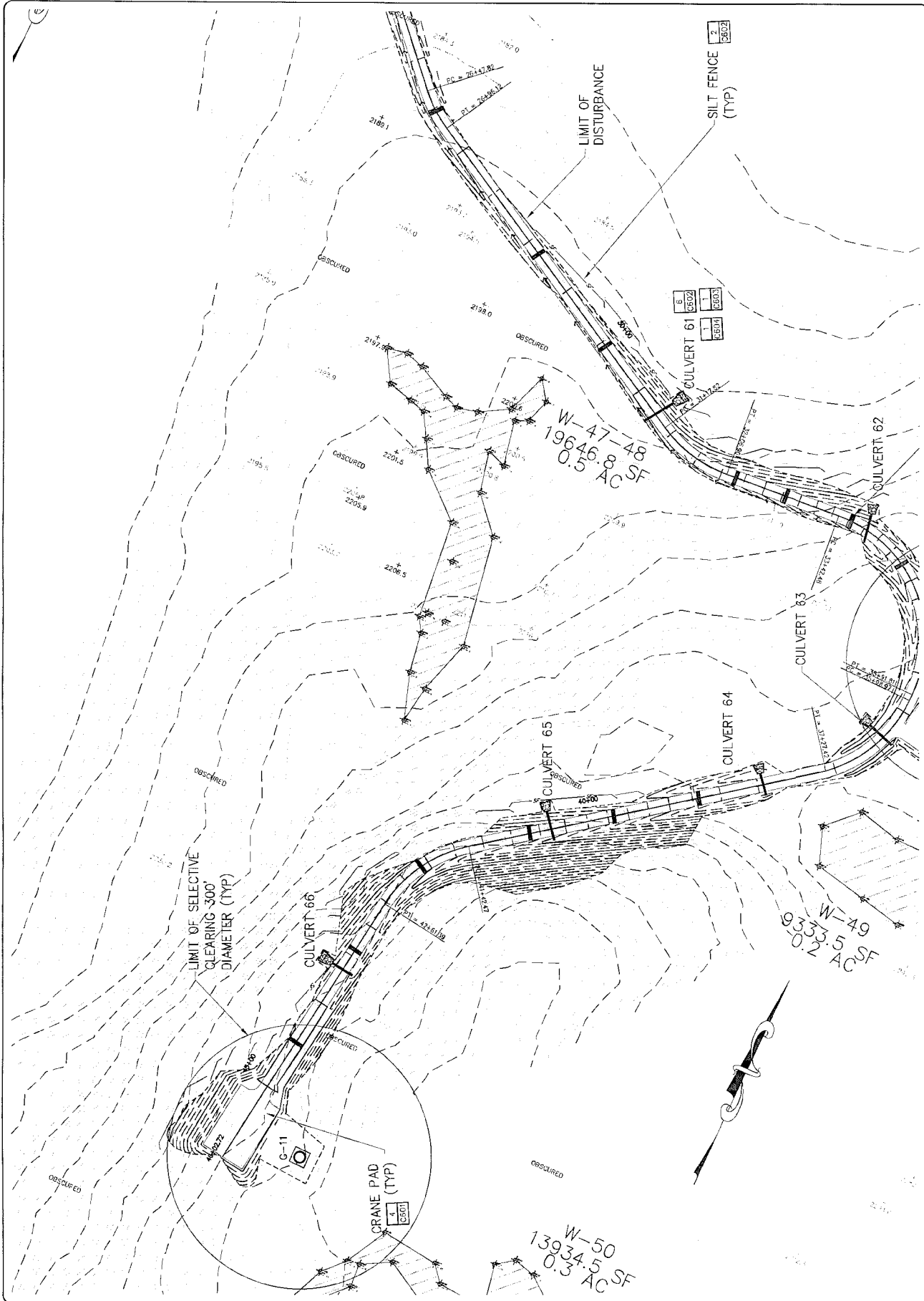
DATE	DESCRIPTION
11/14/06	ISSUED FOR SITE SPECIFIC REVIEW
11/14/06	REVISION

LEMPSTER WIND, LLC  
 150 STRAFFORD AVENUE  
 SUITE 110  
 WAYNE, PA 19087



LEMPSTER MOUNTAIN  
 WIND POWER PROJECT  
 LEMPSTER, NH  
 EROSION CONTROL PLAN  
 Job No. 14821  
 Date: 11-20-06

**C-213**



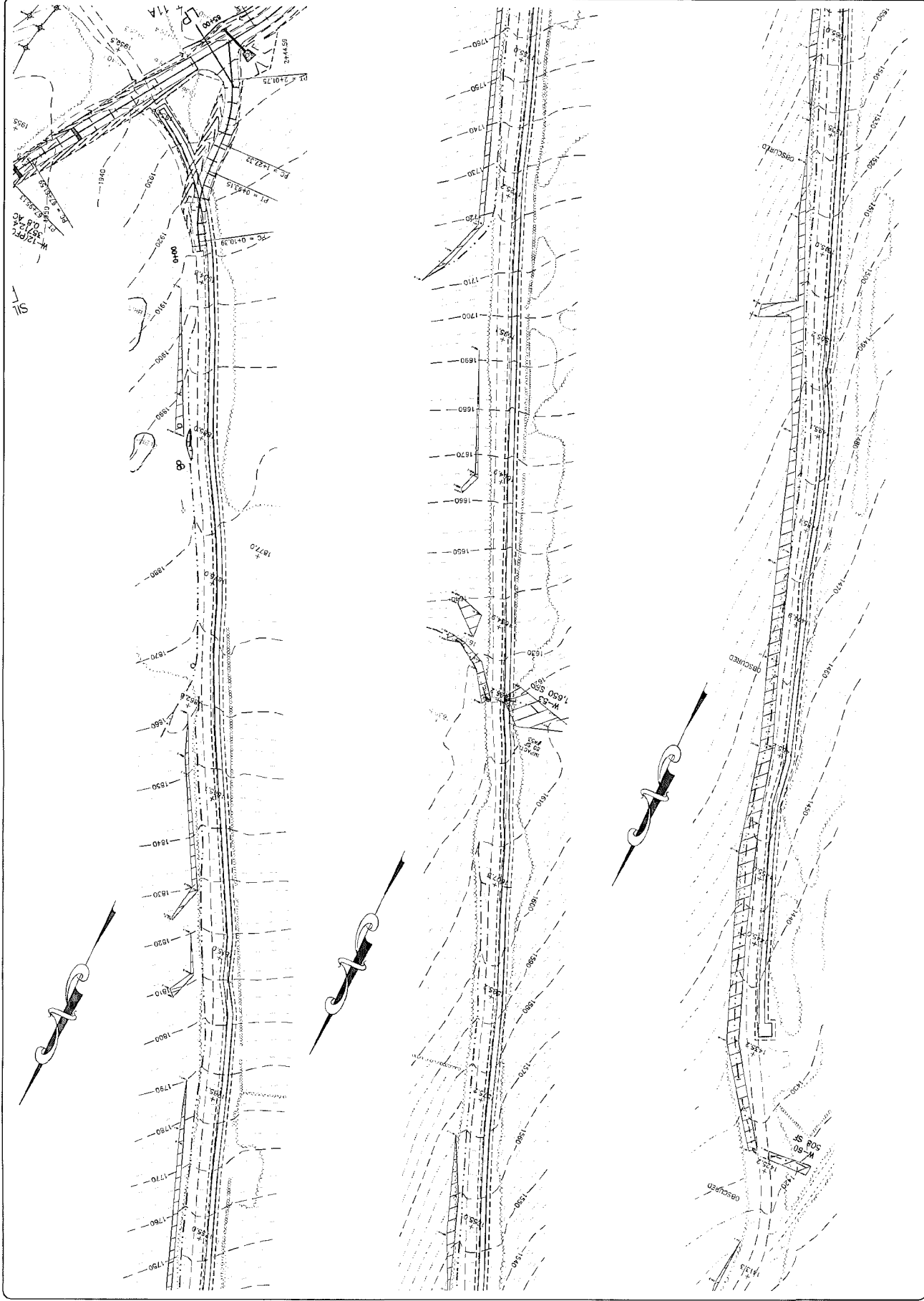
LEMPSTER MOUNTAIN  
WIND POWER PROJECT  
LEMPSTER, NH  
EROSION CONTROL PLAN

Issue Date: 01/18/08 Project No.: 14021 Scale: 1"=50'



LEMPSTER WIND, LLC  
150 STRAFFORD AVENUE  
SUITE 110  
WAYNE, PA 19087

NO.	DATE	DESCRIPTION
1	01/14/08	ISSUED FOR SITE SPECIFIC REVIEW
2		
3		
4		
5		
6		
7		
8		
9		
10		





LEMPSTER WIND, LLC  
150 STRAFFORD AVENUE  
WAYNE, PA 19087

SS, SD FOR SITE SPECIFIC REVIEW

DATE: 11/11/10

BY: [Signature]

TITLE: [Signature]

SCALE: AS NOTED

PROJECT: WIND POWER PROJECT

DATE: 11/11/10

BY: [Signature]

TITLE: [Signature]

SCALE: AS NOTED

PROJECT: WIND POWER PROJECT

DATE: 11/11/10

BY: [Signature]

TITLE: [Signature]

SCALE: AS NOTED

PROJECT: WIND POWER PROJECT

DATE: 11/11/10

BY: [Signature]

TITLE: [Signature]

SCALE: AS NOTED

PROJECT: WIND POWER PROJECT

DATE: 11/11/10

BY: [Signature]

TITLE: [Signature]

SCALE: AS NOTED

PROJECT: WIND POWER PROJECT

DATE: 11/11/10

BY: [Signature]

TITLE: [Signature]

SCALE: AS NOTED

PROJECT: WIND POWER PROJECT

DATE: 11/11/10

BY: [Signature]

TITLE: [Signature]

SCALE: AS NOTED

PROJECT: WIND POWER PROJECT

DATE: 11/11/10

BY: [Signature]

TITLE: [Signature]

SCALE: AS NOTED

PROJECT: WIND POWER PROJECT

DATE: 11/11/10

BY: [Signature]

TITLE: [Signature]

SCALE: AS NOTED

PROJECT: WIND POWER PROJECT

DATE: 11/11/10

BY: [Signature]

TITLE: [Signature]

SCALE: AS NOTED

PROJECT: WIND POWER PROJECT

DATE: 11/11/10

BY: [Signature]

TITLE: [Signature]

SCALE: AS NOTED

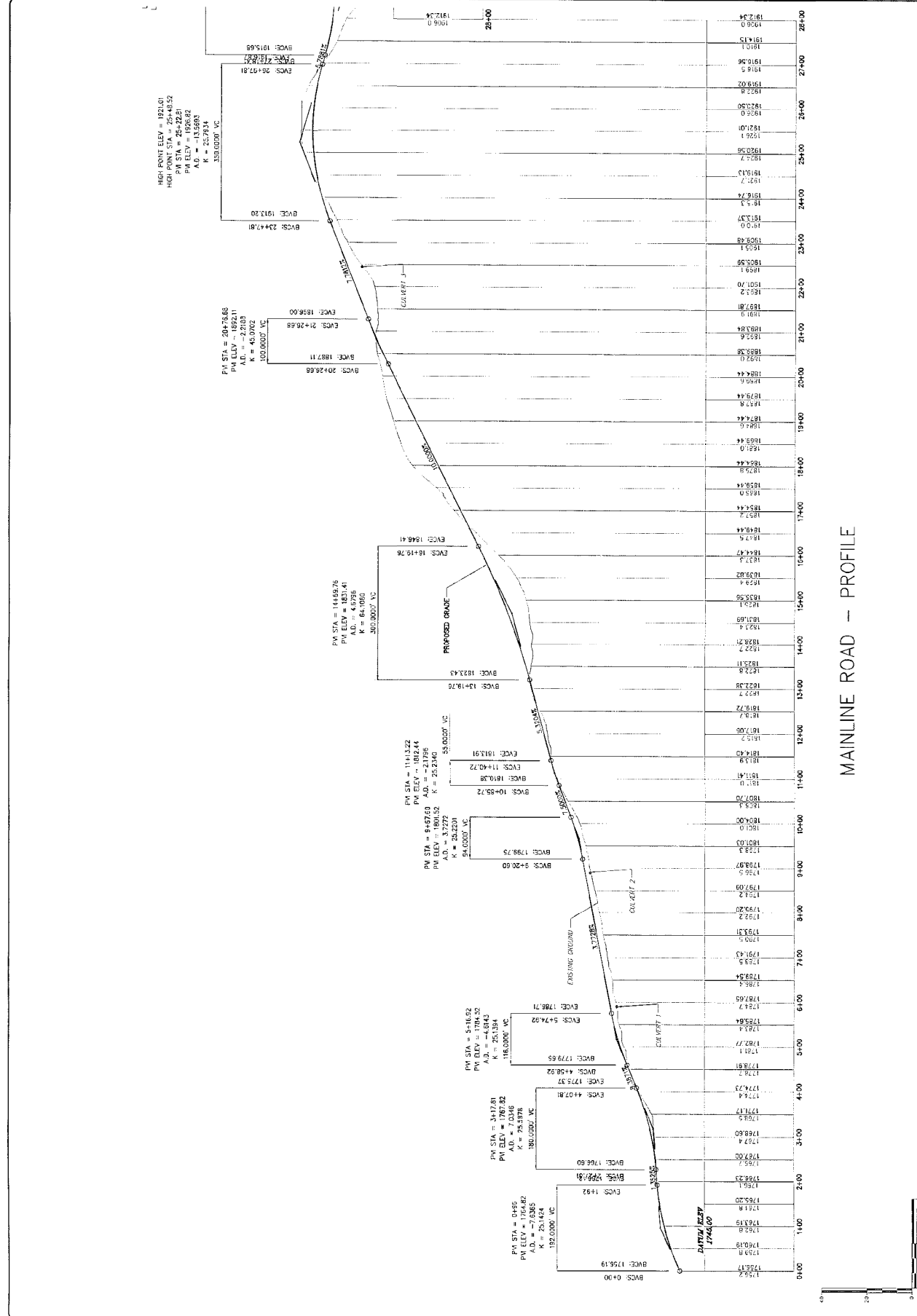
PROJECT: WIND POWER PROJECT

DATE: 11/11/10

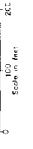
BY: [Signature]

TITLE: [Signature]

SCALE: AS NOTED



MAINLINE ROAD - PROFILE



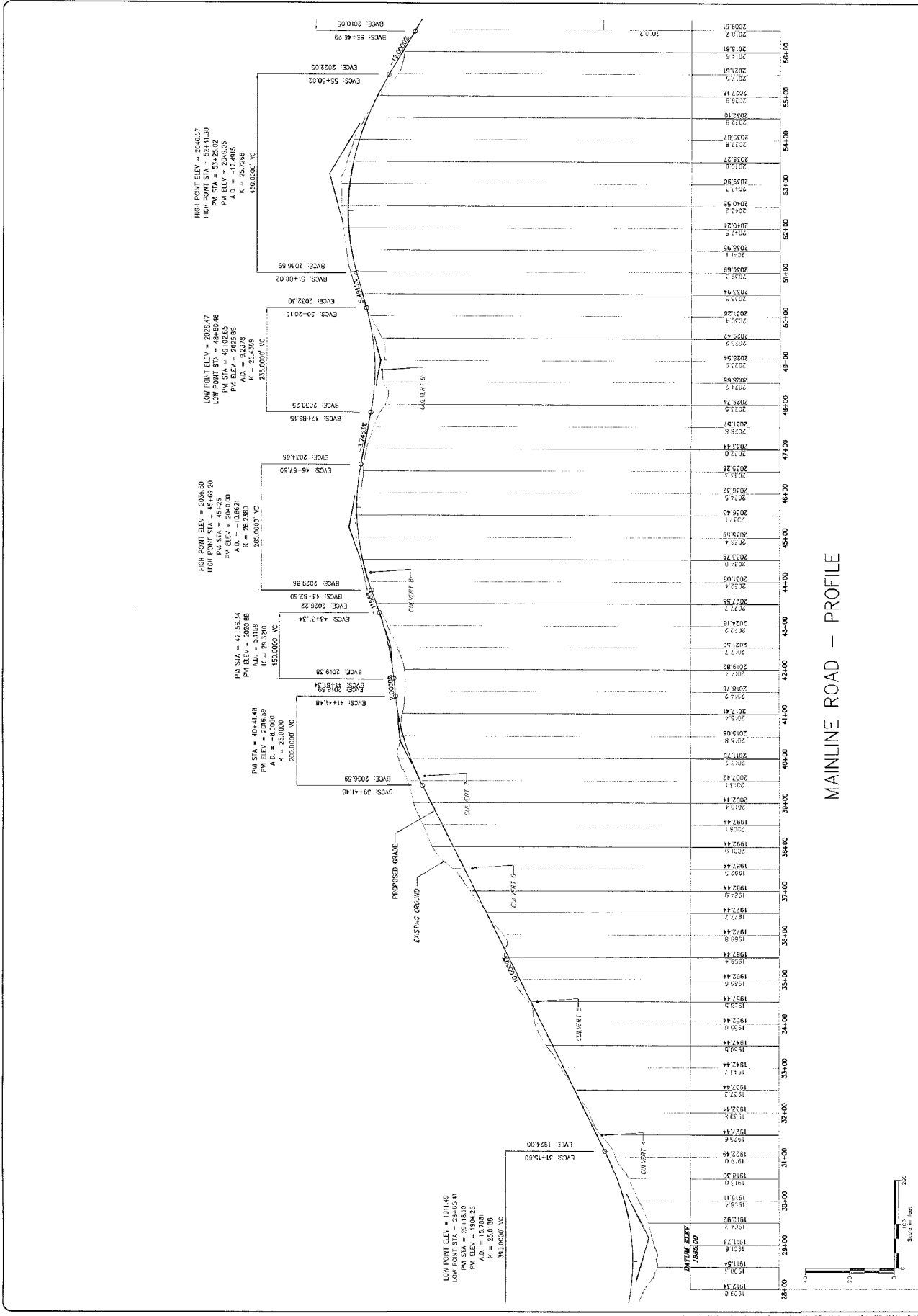
DATE	BY	REVISION

LEMPSTER WIND, LLC  
 150 STRAFFORD AVENUE  
 SUITE 110  
 WAYNE, PA 19087



LEMPSTER MOUNTAIN WIND POWER PROJECT  
 LEMPSTER, NH  
 MAINLINE - PROFILE  
 SHEET # 4/14/05

**C-402**



**LEMPSTER MOUNTAIN  
WIND POWER PROJECT  
LEMPSTER, NH**

MAINTENANCE - PROFILE

Project No. 154971 Issue Date: 03/17/08

Checked: MNR  
Checked: MNT  
Checked: MNT  
Checked: MNT

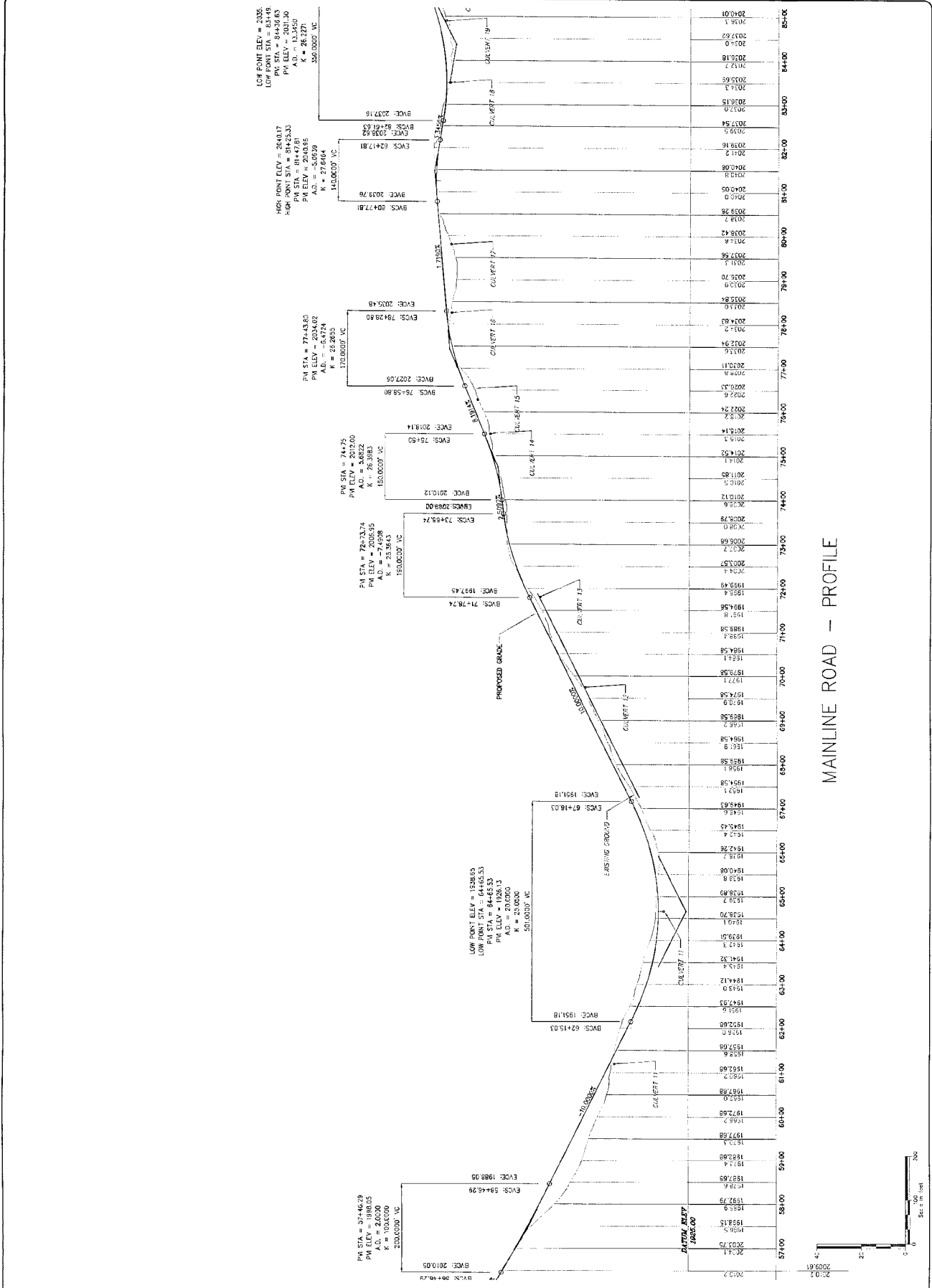
GEORGE HARBOR & ASSOCIATES LLP  
11 King Charles Drive, Suite 200  
03025, NH

**GHA**

STATE OF NEW HAMPSHIRE  
COMMISSION FOR CONSERVATION  
DESIGN PROFESSIONAL SEAL  
NO. 8051  
EXPIRES 12/31/2010

**LEMPSTER WIND, LLC**  
150 STRAFFORD AVENUE  
SUITE 110  
WAYNE, PA 19087

REV	DATE	DESCRIPTION
1	4/14/06	ISSUED FOR SITE SPECIFIC REVIEW



**LOW POINT ELEVATION = 2026.0**  
HIGH POINT ELEVATION = 2036.0
 LOW POINT STA = 2020.30  
HIGH POINT STA = 2030.30  
 LOW POINT ELEV = 2026.0  
HIGH POINT ELEV = 2036.0  
 LOW POINT STA = 2020.30  
HIGH POINT STA = 2030.30  
 LOW POINT ELEV = 2026.0  
HIGH POINT ELEV = 2036.0  
 LOW POINT STA = 2020.30  
HIGH POINT STA = 2030.30

**Vertical Curve 1:**  
 BVC: 2010.05  
EVC: 2020.05  
L: 100.00  
 LOW POINT STA = 2015.00  
LOW POINT ELEV = 2026.0  
 HIGH POINT STA = 2015.00  
HIGH POINT ELEV = 2026.0

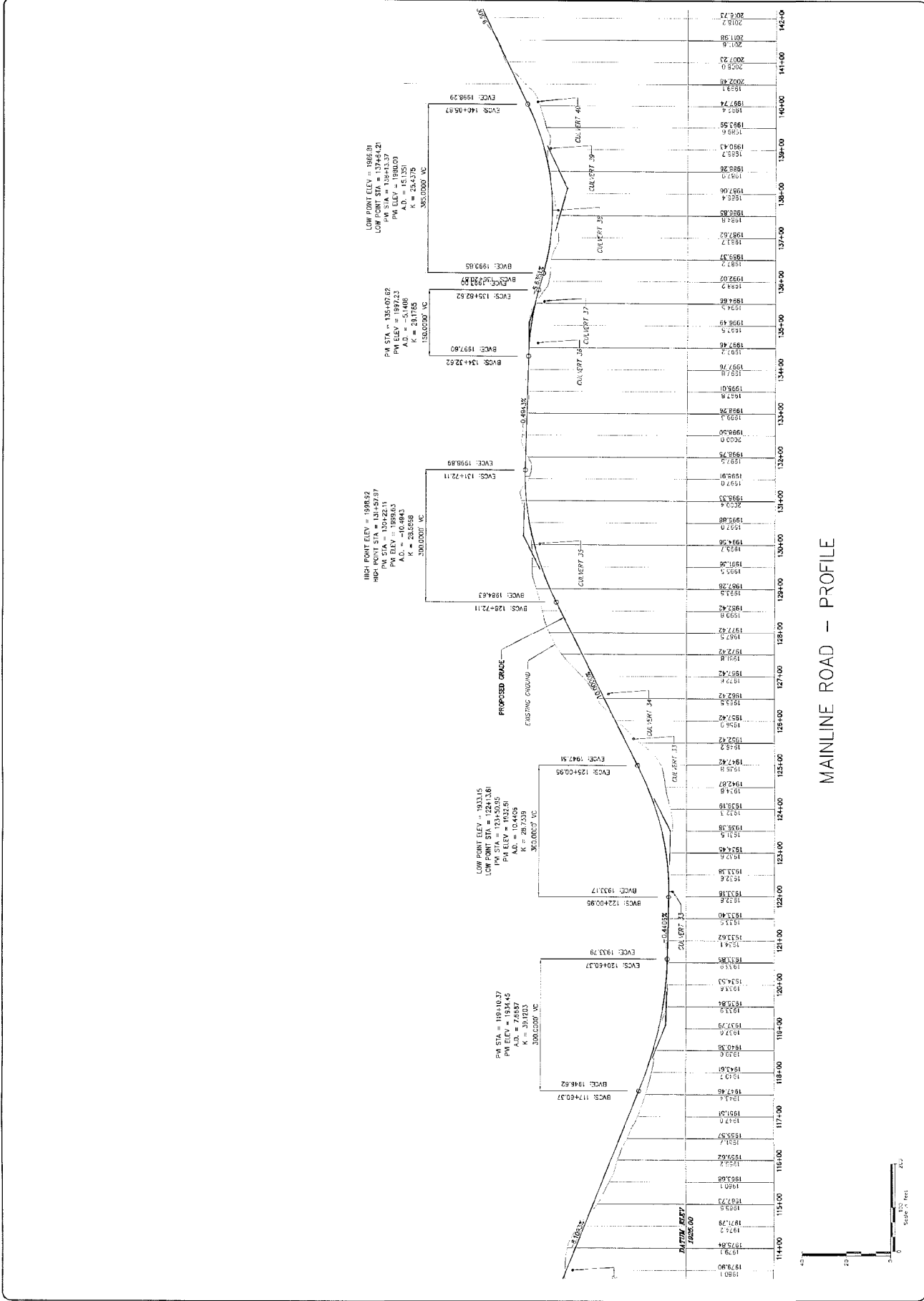
**Vertical Curve 2:**  
 BVC: 2020.05  
EVC: 2030.05  
L: 100.00  
 LOW POINT STA = 2025.00  
LOW POINT ELEV = 2026.0  
 HIGH POINT STA = 2025.00  
HIGH POINT ELEV = 2026.0

**Vertical Curve 3:**  
 BVC: 2030.05  
EVC: 2040.05  
L: 100.00  
 LOW POINT STA = 2035.00  
LOW POINT ELEV = 2026.0  
 HIGH POINT STA = 2035.00  
HIGH POINT ELEV = 2026.0



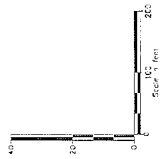
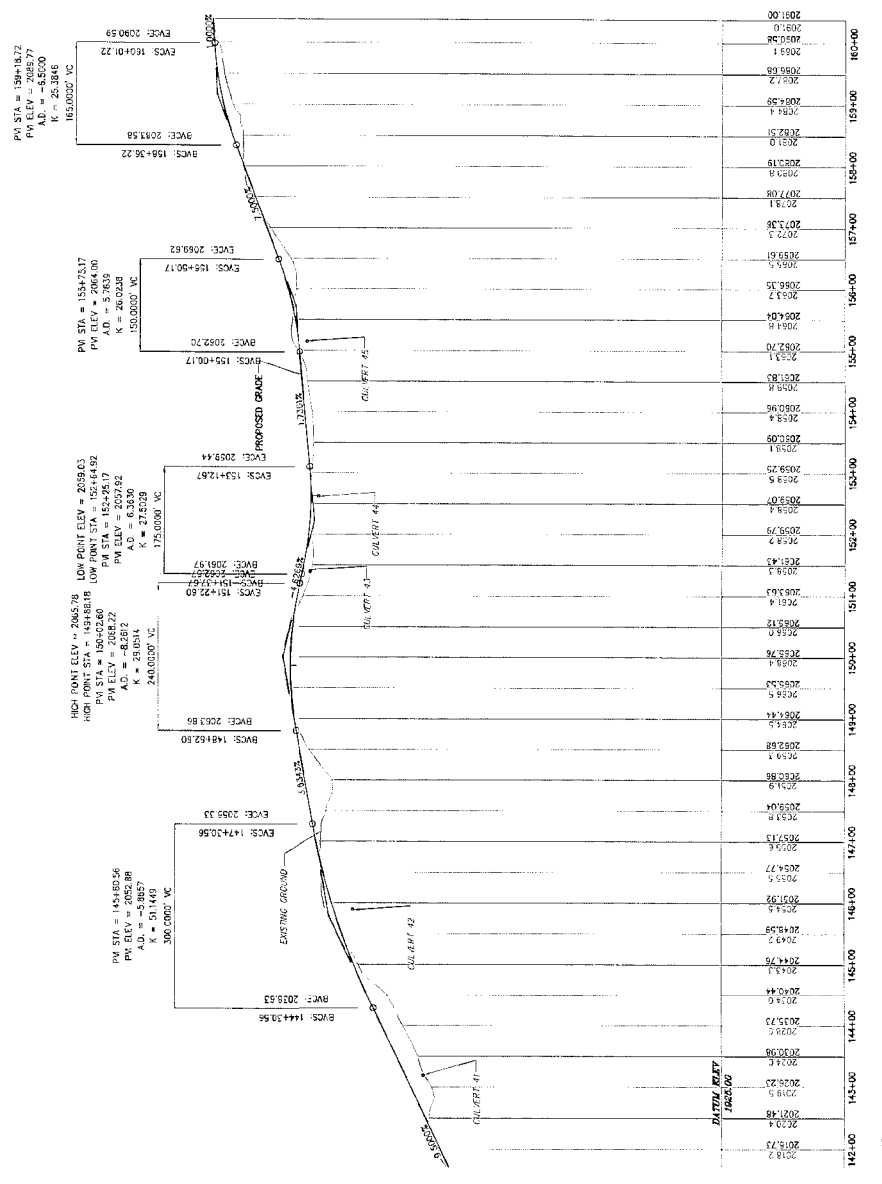


NO.	DATE	BY	CHKD	DESCRIPTION
1	11/01/06	JAK	JAK	ISSUED FOR SITE SPECIFIC REVIEW



REV	DATE	BY	APP'D BY	DESCRIPTION
1	03/19/08	MLG		ISSUED FOR SITE SPECIFIC REVIEW
2				
3				
4				
5				

MAINLINE ROAD - PROFILE





CH2M HILL  
GROUP HARBOUR & ASSOCIATES LLP  
11 New York Avenue, Suite 200  
Boston, MA 02111  
Tel: (617) 221-1100  
Fax: (617) 221-1101  
www.ch2mhill.com

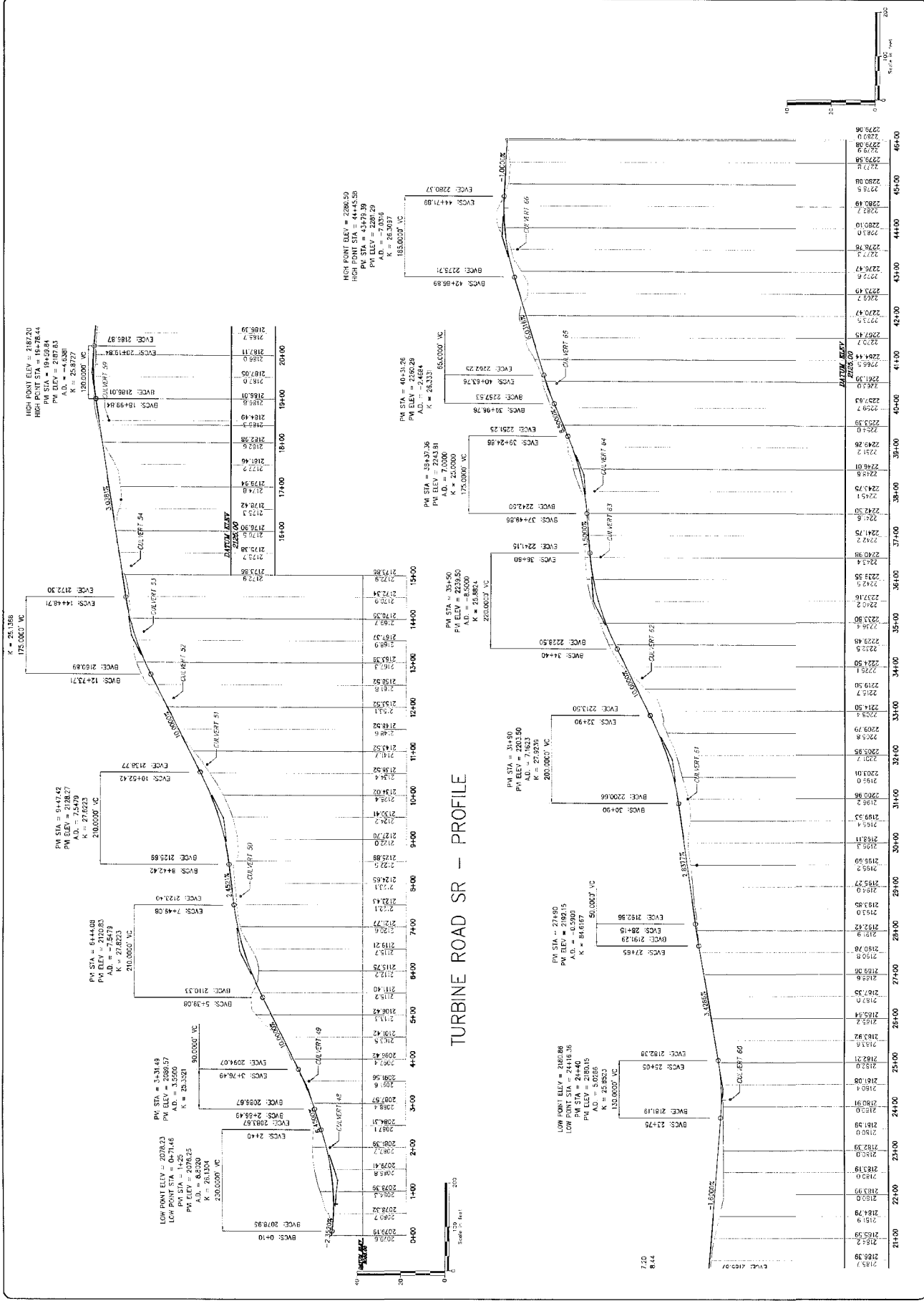
DATE: 08/11/10  
PROJECT NO.: 14021  
SCALE: AS NOTED

DESIGNED: MMT  
DRAWN: MMT  
CHECKED: MMT  
DATE: 08/11/10

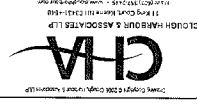
LEMPSTER MOUNTAIN WIND FARM  
SR SIDE ROAD - PROFILE  
DATE: 08/11/10  
PROJECT NO.: 14021  
SCALE: AS NOTED

LEMPSTER WIND, LLC  
150 STRAFFORD AVENUE  
WAYNE, PA 19087

NO.	REVISION	DATE
1	ISSUED FOR SITE SPECIFIC REVIEW	08/11/10
2		
3		
4		
5		

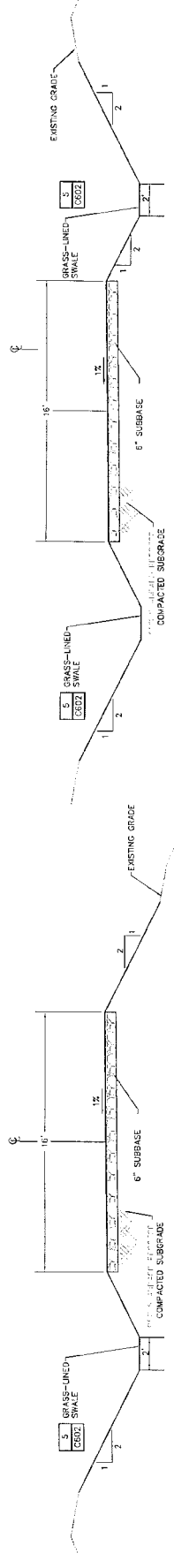




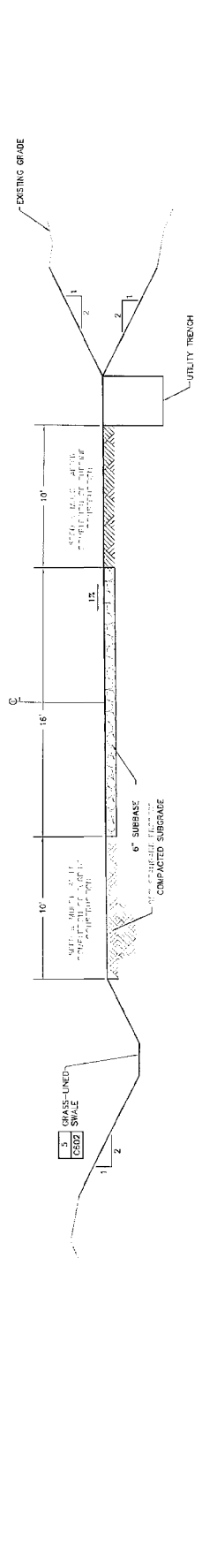


LEMPSTER WIND, LLC  
150 STRAFORD AVENUE  
SUITE 110  
WAYNE, PA 19087

NO.	REVISION	DATE
1	ISSUED FOR SITE SECTION REVIEW	4/14/08



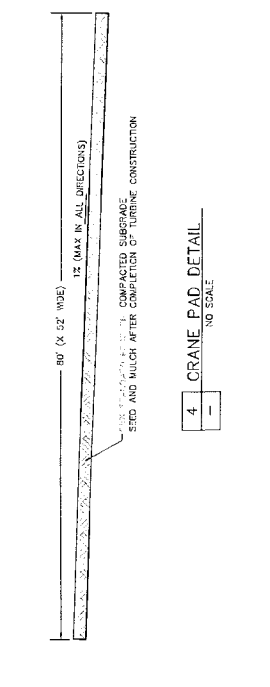
1 TRANSPORT ROAD TYPICAL CROSS SECTION (16' WIDE)  
NO SCALE



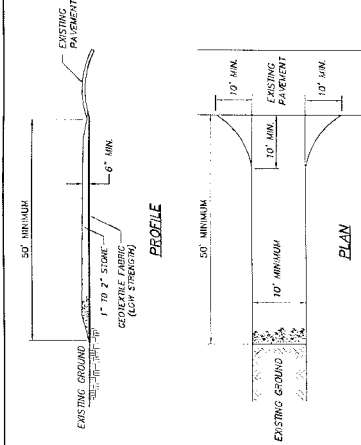
2 TRANSPORT ROAD TYPICAL CROSS SECTION (16' WIDE)  
NO SCALE



3 CRANE ROAD TYPICAL CROSS SECTION  
NO SCALE

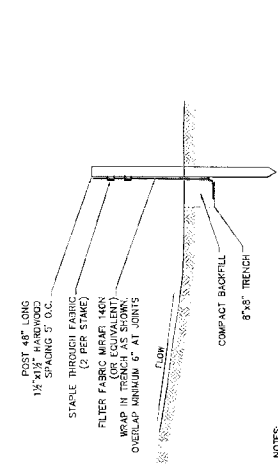


4 CRANE PAD DETAIL  
NO SCALE



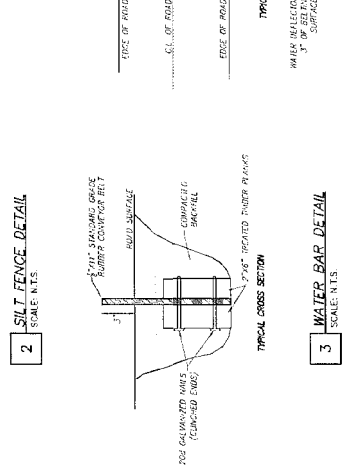
- NOTES:**
1. MAINTENANCE - THE GUARANTEE SHALL BE MAINTAINED IN A CONDITION WHICH WILL PREVENT TRACKING OR LOOSING OF SEDIMENT ONTO ADJACENT HIGHWAYS. THIS MAY REQUIRE PERIODIC TOP DRESSING WITH ADDITIONAL STONE AS CONDITIONS DEMAND AND SHALL BE THE RESPONSIBILITY OF THE CONTRACTOR. STONE SHOULD BE CLEAN, UNWASHED, UNOILED, UNPAINTED, UNGLAZED, UNGRAINED, UNWAXED, OR TRACKED ONTO PUBLIC RIGHTS-OF-WAY MUST BE REMOVED IMMEDIATELY.
  2. PERIODIC INSPECTION AND NEEDED MAINTENANCE SHALL BE PROVIDED AFTER EACH RAINFALL EVENT.

**1 STABILIZED TEMPORARY CONSTRUCTION ENTRANCE DETAIL**  
SCALE: N.T.S.

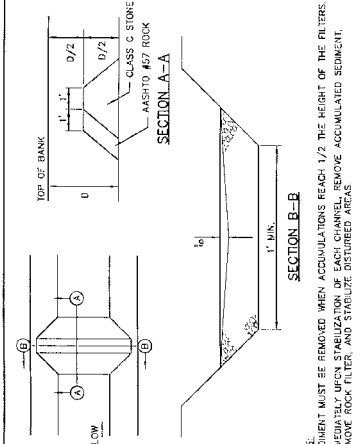


- NOTES:**
1. SILT FENCE MUST BE PLACED AT LEAST 5 FEET FROM EXISTING GRADE BOTH ENDS OF THE TRENCH AND BE PROTECTED BY A LEAST 6 FEET UP SLOPE AT 45 DEGREES TO THE MAIN BARrier ALIGNMENT.
  2. SEDIMENT MUST BE REMOVED WHEN ACCUMULATIONS REACH 1/2 THE ABOVE GRADING.
  3. THE TRENCH SHALL BE INSPECTED AFTER EVERY MAINTENANCE EVENT TO ENSURE ITS PROPER ALIGNMENT AND THAT IT IS MAINTAINED AT ALL TIMES.
  4. WHEN FENCE IS NO LONGER NEEDED, THE ACCUMULATED SEDIMENT SHALL BE REMOVED AND FABRIC SHALL BE REMOVED AND TRENCH BACKFILLED WITH TOPSOIL AND SEED.

**2 SILT FENCE DETAIL**  
SCALE: N.T.S.

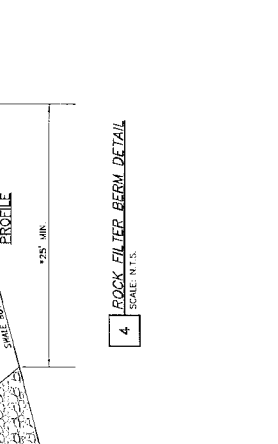


**3 WATER BAR DETAIL**  
SCALE: N.T.S.



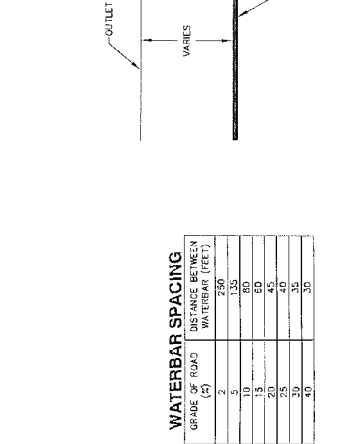
- NOTES:**
1. SEDIMENT MUST BE REMOVED WHEN ACCUMULATIONS REACH 1/2 THE HEIGHT OF THE FILTERS.
  2. IMMEDIATELY UPON STABILIZATION OF EACH CHANNEL, REMOVE ACCUMULATED SEDIMENT, REMOVE ROCK FILTER, AND STABILIZE DISTURBED AREAS.

**4 ROCK FILTER BERM DETAIL**  
SCALE: N.T.S.

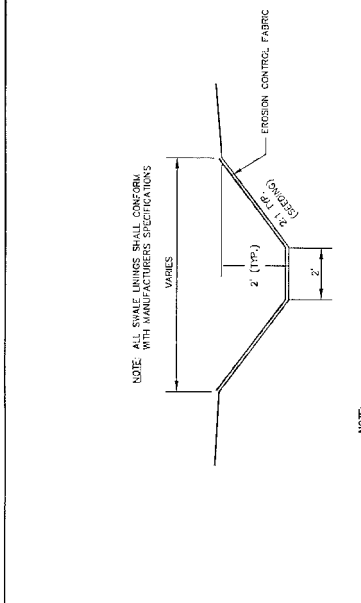


- NOTE:**
- EROSION CONTROL FABRIC INSTALLED IN VEGETATED SWALES TO BE SPECIFIED BY NORTH AMERICAN GREEN OR APPROVED EQUAL EXCEPT FOR SWALES TO BE INSTALLED IN AREAS WHERE THE EXISTING SOIL IS CLASSIFIED AS A, B, AND C. THESE SPECIFIED SWALES SHALL RECEIVE P-300 BY NORTH AMERICAN GREEN OR APPROVED EQUAL.

**5 VEGETATED SWALE DETAIL**  
SCALE: N.T.S.

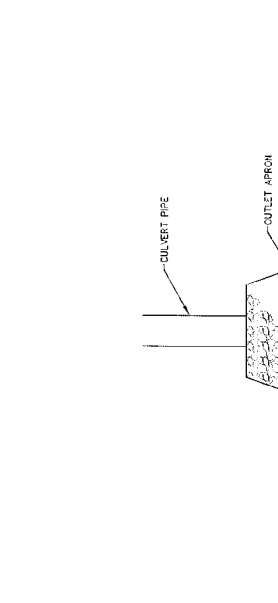


**6 LEVEL SPREADER DETAIL**  
SCALE: N.T.S.



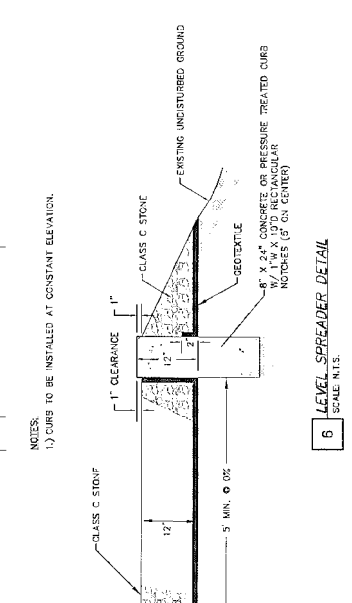
- NOTE:**
- EROSION CONTROL FABRIC INSTALLED IN VEGETATED SWALES TO BE SPECIFIED BY NORTH AMERICAN GREEN OR APPROVED EQUAL EXCEPT FOR SWALES TO BE INSTALLED IN AREAS WHERE THE EXISTING SOIL IS CLASSIFIED AS A, B, AND C. THESE SPECIFIED SWALES SHALL RECEIVE P-300 BY NORTH AMERICAN GREEN OR APPROVED EQUAL.

**5 VEGETATED SWALE DETAIL**  
SCALE: N.T.S.



- NOTES:**
- 1.) CURB TO BE INSTALLED AT CONSTANT ELEVATION.

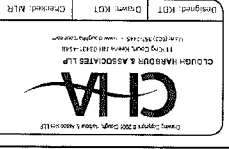
**5 VEGETATED SWALE DETAIL**  
SCALE: N.T.S.



**6 LEVEL SPREADER DETAIL**  
SCALE: N.T.S.

NO.	REVISION	DATE	BY	CHECKED
1	ISSUED FOR SITE SPECIFIC REVIEW			

LEMPSTER WIND, LLC  
150 STRAFORD AVENUE  
SUITE 110  
WAYNE, PA 19087



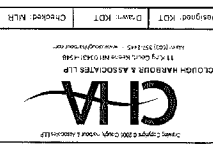
LEMPSTER MOUNTAIN  
WIND POWER PROJECT  
LEMPSTER, NH  
CONSTRUCTION DETAILS  
Scale: AS SHOWN  
Project: 18076  
Issue Date: 11/11/16

**C-602**



DATE	BY	REVISION
11/19/08	MLH	ISSUED FOR SITE SPECIFIC REVIEW

LMPASTER WIND, LLC  
 150 STRAFORD AVENUE  
 SUITE 110  
 WAYNE, PA 19087



LEMPASTER MOUNTAIN  
 WIND POWER PROJECT  
 LEMPASTER, NH  
 CONSTRUCTION DETAILS

C-604

**CONSTRUCTION SEQUENCE**

- AT LEAST 7 DAYS BEFORE STARTING ANY EARTH DISTURBANCE ACTIVITIES, THE OPERATOR SHALL NOTIFY ALL INVOLVED IN THOSE ACTIVITIES, THE LANDOWNER, ALL MEETING ALSO AT LEAST 3 DAYS BEFORE STARTING ANY EARTH DISTURBANCE ACTIVITIES THE OPERATOR SHALL NOTIFY DIG SAGE AT 1-800-DIG-SAGE FOR BURIED UTILITIES LOCATIONS.
- THE GENERAL REQUIREMENTS FOR THE CONSTRUCTION OF THE LEMPASTER MOUNTAIN WIND PARK IS AS FOLLOWS
  - INSTALL AND MAINTAIN THE ROCK CONSTRUCTION ENTRANCE AS SHOWN ON SHEET C-501.
  - ORDER AND PREPARE FOR THE CONSTRUCTION OF THE ACCESS ROADS AND POWER LOCATIONS STARTING AT JARD MOUNTAIN ROAD AND EXTENDING TO THE ELECTRICAL SUBSTATION LOCATION. THE SUBSTATION AREA MAY BE CONSTRUCTED AFTER THE ACCESS ROADS, SWALES, STORM PIPES, UTILITY CONDUITS, AND ALL RELATED BMP'S (SILT FENCE, WATER BARS, CULVERT PROTECTIONS AND ROCK FILTER BERM'S) ARE IN PLACE. THE INSTALLATION OF TEMPORARY EASE BAYS IN THE SAME WORKING DAY.
  - UPON COMPLETION OF THE ADJACENT ROADWAY SECTION CONSTRUCT TOWER FOUNDATIONS AND WORKING AREAS.
  - CONSTRUCT TURBINES AS SPECIFIED BY MANUFACTURERS.
  - PERMANENTLY SEED ALL AREAS DISTURBED BY THE CONSTRUCTION AND CLEAN ALL AREAS WITH A MINIMUM UNIFORM GRASS COVER OF 70% IS ESTABLISHED ON ALL DISTURBED AREAS.
  - REMOVE THE ACCESS ROADS IN ACCORDANCE WITH THE TYPICAL SECTIONS WHEN ALL GRASS AND TRANSFORMER OPERATIONS HAVE CEASED.
  - STABILIZE THE ACCESS ROADS IN ACCORDANCE WITH THE TYPICAL SECTIONS WHEN ALL GRASS AND TRANSFORMER OPERATIONS HAVE CEASED.
  - REMOVE THE SILT BARRIER FENCE AND THE ROCK FILTERS.
  - MULCH THE AREAS WHERE THE BMP'S WERE LOCATED IN STEP 7. SEED AND MOW THE AREAS FOLLOWING THE PROCEDURES OUTLINED IN STEP 5. DISPOSE OF ANY EXCESS SEDIMENT AS OUTLINED IN THE MAINTENANCE NOTES.

**EROSION & SEDIMENT CONTROL MAINTENANCE PROGRAM:**

- PLACE SILT FENCE AS INDICATED.
- CLEAR AND GRUB TO LIMIT OF DISTURBANCE.
- PERFORM EXCAVATION AND GRADING OPERATIONS IMMEDIATELY PERFORM STEPS 4 AND 5.
- PLACE SEED AND SOIL SUPPLEMENTS
  - PLACE EROSION CONTROL BLANKET IN ACCORDANCE WITH MANUFACTURER'S RECOMMENDATIONS.
  - PLACE SEED, SOIL SUPPLEMENTS, AND MULCH IN ADJACENT DISTURBED AREAS. MARKING SURE THAT MULCH IS ANCHORED ON STEEP SLOPES. (SEE SLOPE STABILIZATION NOTES THIS PAGE)
  - UPON STABILIZATION OF THE SWALE AND ADJACENT DISTURBED AREAS, REMOVE SILT FENCE.
- REMOVE CONSTRUCTION OBSTRUCTIONS AT THE DISCHARGE POINT AND WORK UP HILL. LIMIT SWALE CONSTRUCTION TO THAT AMOUNT WHICH CAN BE CONSTRUCTED AND STABILIZED WITH EROSION CONTROL BLANKET IN ONE DAY.

**TYPICAL GRASS LINED SWALE INSTALLATION SEQUENCE**

- EXCAVATE PIPE TRENCH FOR NEW INSTALLATION. EXCAVATED MATERIAL FOR NEW PIPE INSTALLATION SHALL BE PLACED ON THE UPSLOPE SIDE OF THE TRENCH. EXCAVATED MATERIAL SHALL BE PLACED AT LEAST 3 FEET AWAY FROM THE EXCAVATED TRENCH.
  - PLACE AND COMPACT PIPE BEHIND MATERIAL.
  - PLACE PIPE AS INDICATED.
  - BACKFILL PIPE TRENCH.
  - PLACE SEED, SOIL SUPPLEMENTS AND MULCH IN ADJACENT DISTURBED AREAS. MARKING SURE THAT MULCH IS ANCHORED ON STEEP SLOPES.
- NOTE:** LIMIT PIPE INSTALLATION TO THAT AMOUNT WHICH CAN BE BACKFILLED, USED FOR SUBSEQUENT AND STABILIZED IN ONE WORKING DAY.

**EROSION CONTROL NOTES**

- THE PROPOSED PROJECT IS SUBJECT TO A SITE SPECIFIC PERMIT ISSUED BY THE STATE OF NEW HAMPSHIRE. THE ENGINEER MAY MODIFY THE EROSION CONTROL PRACTICES AND THE APPROVED PLAN AT ANY TIME BASED ON SITE CONDITIONS.
- ALL SEDIMENT THAT IS WASHED OR TRACKED ONTO PUBLIC RIGHTS-OF-WAY SHALL BE REMOVED IMMEDIATELY.
- THE SMALLEST PRACTICAL AREA OF LAND SHALL BE EXPOSED AT ONE TIME. STABILIZE AREAS PRIOR TO ANY ADDITIONAL EARTH DISTURBANCE.
- PAVED DRAINAGE AREAS SHALL BE SEED AND MULCHED WITHIN THREE DAYS OF COMPLETION. UNPAVED AREAS SHALL BE SEED AND MULCHED WITHIN SEVEN DAYS OF COMPLETION.
- STABILIZE ALL DITCHES & SWALES PRIOR TO DIRECTING FLOW TO THEM.
- INSPECT ALL EROSION CONTROL DEVICES WEEKLY PRIOR TO FORECASTED RAIN EVENTS. REPAIRS SHALL BE MADE AS NECESSARY PRIOR TO ANY RAIN EVENT OF 0.5" OR GREATER. MAKE NECESSARY REPAIRS IMMEDIATELY.
- AFTER EACH RAINFALL, ALL CUT AND FILL SLOPES SHALL BE INSPECTED FOR DAMAGE. LOCK FOR EROSION, DESALINATION OF SOILS, SLOPES, EMBANKMENT CRACKING, AND DISPLACED MULCH. MAKE ALL NECESSARY REPAIRS IMMEDIATELY.
- SEDIMENT SHALL BE DISPOSED TO A SECURE LOCATION TO PREVENT SLITATION OF WATERSHEDS.
- IF ANY DISTURBED AREA IS NOT SEEDING AND MULCHED AS NECESSARY, IT SHALL BE RESEED AND MULCHED AS NECESSARY.
- MAY OR STRAW MULCH SHALL BE APPLIED AT A RATE OF TWO BALES PER 1,000 SQUARE FEET (OR APPROXIMATELY TWO TONS PER ACRE).
- IF CONSTRUCTION EXTENDS BEYOND NOVEMBER 1 (ON ANY YEAR) MULCH APPLICATION SHALL BE INCREASED TO FOUR BALES PER 1,000 SQUARE FEET, LONGER THAN 30 DAYS.
- AT NO TIME SHALL AN AREA LARGER THAN 2 ACRES BE EXPOSED FOR A PERIOD OF LONGER THAN 30 DAYS.
- TEMPORARY STABILIZATION - TOPSOIL STOCKPILES AND DISTURBED PORTIONS OF THE SITE WHERE CONSTRUCTION ACTIVITIES TEMPORARILY CEASE FOR AT LEAST 21 DAYS FROM THE LAST CONSTRUCTION ACTIVITY IN THAT AREA. PRIOR TO SEEDING, EACH AREA SHALL BE MULCHED TO A MINIMUM OF TWO TONS PER ACRE. TO DO SO MULCH SHALL BE APPLIED TO EACH PORTION OF THE STOCKPILE AFTER SEEDING. EACH AREA SHALL BE MULCHED WITH FOUR POUNDS OF STRAW PER ACRE. BY APPLYING GRAVEL SURFACE UNTIL FIRMAMENT CAN BE APPLIED.
- PERMANENT STABILIZATION - DISTURBED PORTIONS OF THE SITE WHERE CONSTRUCTION ACTIVITIES PERMANENTLY CEASE SHALL BE STABILIZED WITH PERMANENT VEGETATION. THE PERMANENT SEED MIX SHALL BE IN ACCORDANCE WITH THE PROJECT PLANS.
- AN AREA SHALL BE CONSIDERED STABLE IF ONE OF THE FOLLOWING HAS OCCURRED:
  - BASE COURSE GRAVELS HAVE BEEN INSTALLED IN AREAS TO BE PAVED
  - A MINIMUM 8% VEGETATED GROWTH HAS BEEN ESTABLISHED
  - CONSTRUCTION ACTIVITIES HAVE CEASED
  - EROSION CONTROL BLANKETS HAVE BEEN INSTALLED
- WINTER CONSTRUCTION NOTES:
  - ALL PROPOSED POST-DEVELOPMENT VEGETATED AREAS WHICH DO NOT EXHIBIT A MINIMUM OF 8% VEGETATIVE GROWTH BY OCTOBER 15, OR WHICH ARE INSTALLED EROSION CONTROL BLANKETS ON SLOPES GREATER THAN 2:1, AND WHICH ARE NOT YET FULLY ESTABLISHED, SHALL BE MULCHED WITH MULCH. MULCHING SHALL BE ACCOMPANIED BY MULCHING TO THE MULCH PER ACRE. MULCHING SHALL BE ACCOMPANIED BY MULCHING TO THE MULCH PER ACRE. MULCHING SHALL BE ACCOMPANIED BY MULCHING TO THE MULCH PER ACRE.
  - ALL DITCHES OR SWALES WHICH DO NOT EXHIBIT A MINIMUM OF 8% VEGETATIVE GROWTH BY OCTOBER 15, OR WHICH ARE DISTURBED AFTER OCTOBER 15, SHALL BE MULCHED WITH MULCH. MULCHING SHALL BE ACCOMPANIED BY MULCHING TO THE MULCH PER ACRE. MULCHING SHALL BE ACCOMPANIED BY MULCHING TO THE MULCH PER ACRE.
  - AFTER NOVEMBER 15, MINIMUM 15% COVER OF GRASS SHALL BE PROTECTED WITH A MINIMUM OF 3 INCHES OF CRUSHED GRAVEL PER 100 SQ. YD. OF DISTURBED AREA. MULCHING SHALL BE ACCOMPANIED BY MULCHING TO THE MULCH PER ACRE. MULCHING SHALL BE ACCOMPANIED BY MULCHING TO THE MULCH PER ACRE.
  - ALL DISTURBED AREAS AT A GRADE STEEPER THAN 6:1 AND NOT COVERED WITH ROCK SHALL BE TEMPORARILY STABILIZED BY MULCHING WITH MAT OF STRAW AND BINDING THE MULCH WITH MULCH MATING WITH ONE INCH SQUARE SPRINGS AND BINDING THE MULCH WITH ONE POUND PER 100 SQ. YD.

**TEMPORARY SEED MIX**

WINTER RYE	15% PER ACRE	USE FOR FALL SEEDING
GRASS	85% PER ACRE	USE FOR SPRING SEEDING
PERENNIAL BUCKWHEAT	45% PER ACRE	SEE EROSION CONTROL PLAN NUMBER AND/OR BETWEEN AUGUST 15 & SEP 15

**NOTE:** TEMPORARY SEEDING IS FOR THE PURPOSE OF EROSION CONTROL WHILE THE PERMANENT SEEDING IS ESTABLISHED. PERMANENT SEEDING SHOULD BE SPREAD UNIMPAIRED AND SOIL SHOULD BE FIRMED BY ROLLING OR PAVING.

**TEMPORARY SEED MIX**

WINTER RYE	15% PER ACRE	USE FOR FALL SEEDING
GRASS	85% PER ACRE	USE FOR SPRING SEEDING
PERENNIAL BUCKWHEAT	45% PER ACRE	SEE EROSION CONTROL PLAN NUMBER AND/OR BETWEEN AUGUST 15 & SEP 15

**NOTE:** TEMPORARY SEEDING IS FOR THE PURPOSE OF EROSION CONTROL WHILE THE PERMANENT SEEDING IS ESTABLISHED. PERMANENT SEEDING SHOULD BE SPREAD UNIMPAIRED AND SOIL SHOULD BE FIRMED BY ROLLING OR PAVING.

**TEMPORARY SEED MIX**

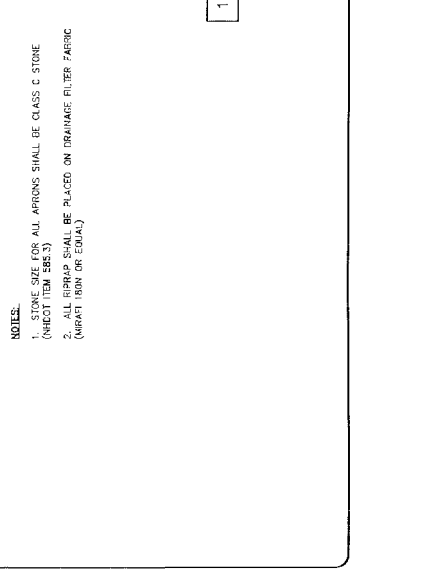
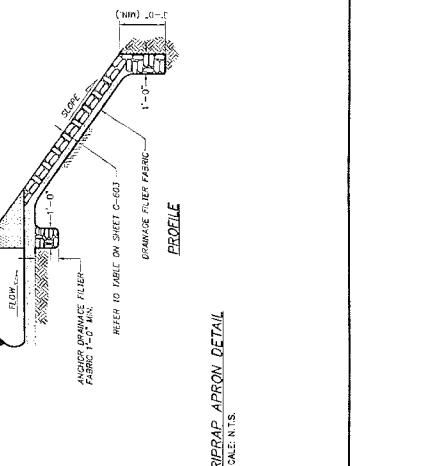
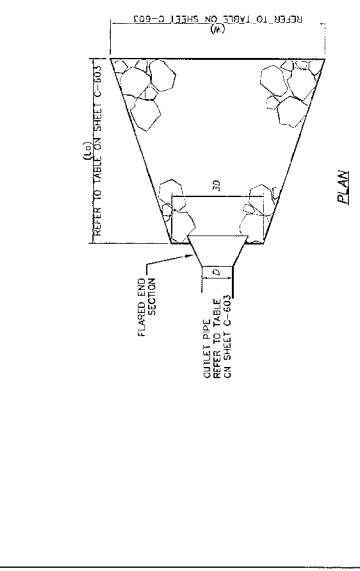
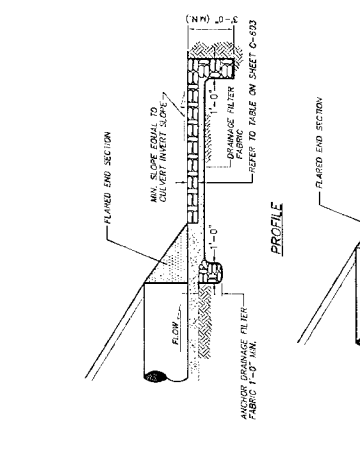
WINTER RYE	15% PER ACRE	USE FOR FALL SEEDING
GRASS	85% PER ACRE	USE FOR SPRING SEEDING
PERENNIAL BUCKWHEAT	45% PER ACRE	SEE EROSION CONTROL PLAN NUMBER AND/OR BETWEEN AUGUST 15 & SEP 15

**NOTE:** TEMPORARY SEEDING IS FOR THE PURPOSE OF EROSION CONTROL WHILE THE PERMANENT SEEDING IS ESTABLISHED. PERMANENT SEEDING SHOULD BE SPREAD UNIMPAIRED AND SOIL SHOULD BE FIRMED BY ROLLING OR PAVING.

**TEMPORARY SEED MIX**

WINTER RYE	15% PER ACRE	USE FOR FALL SEEDING
GRASS	85% PER ACRE	USE FOR SPRING SEEDING
PERENNIAL BUCKWHEAT	45% PER ACRE	SEE EROSION CONTROL PLAN NUMBER AND/OR BETWEEN AUGUST 15 & SEP 15

**NOTE:** TEMPORARY SEEDING IS FOR THE PURPOSE OF EROSION CONTROL WHILE THE PERMANENT SEEDING IS ESTABLISHED. PERMANENT SEEDING SHOULD BE SPREAD UNIMPAIRED AND SOIL SHOULD BE FIRMED BY ROLLING OR PAVING.



**NOTES:**  
 1. STONE SIZE FOR ALL APRONS SHALL BE CLASS C STONE (MCHOT ITEM #86.3)  
 2. ALL RIPRAP SHALL BE PLACED ON DRAINAGE FILTER FABRIC (MWHAT IRON OR EQUAL)