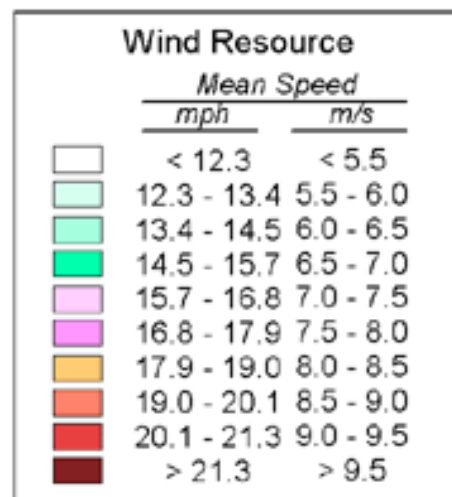


The New England Wind Map

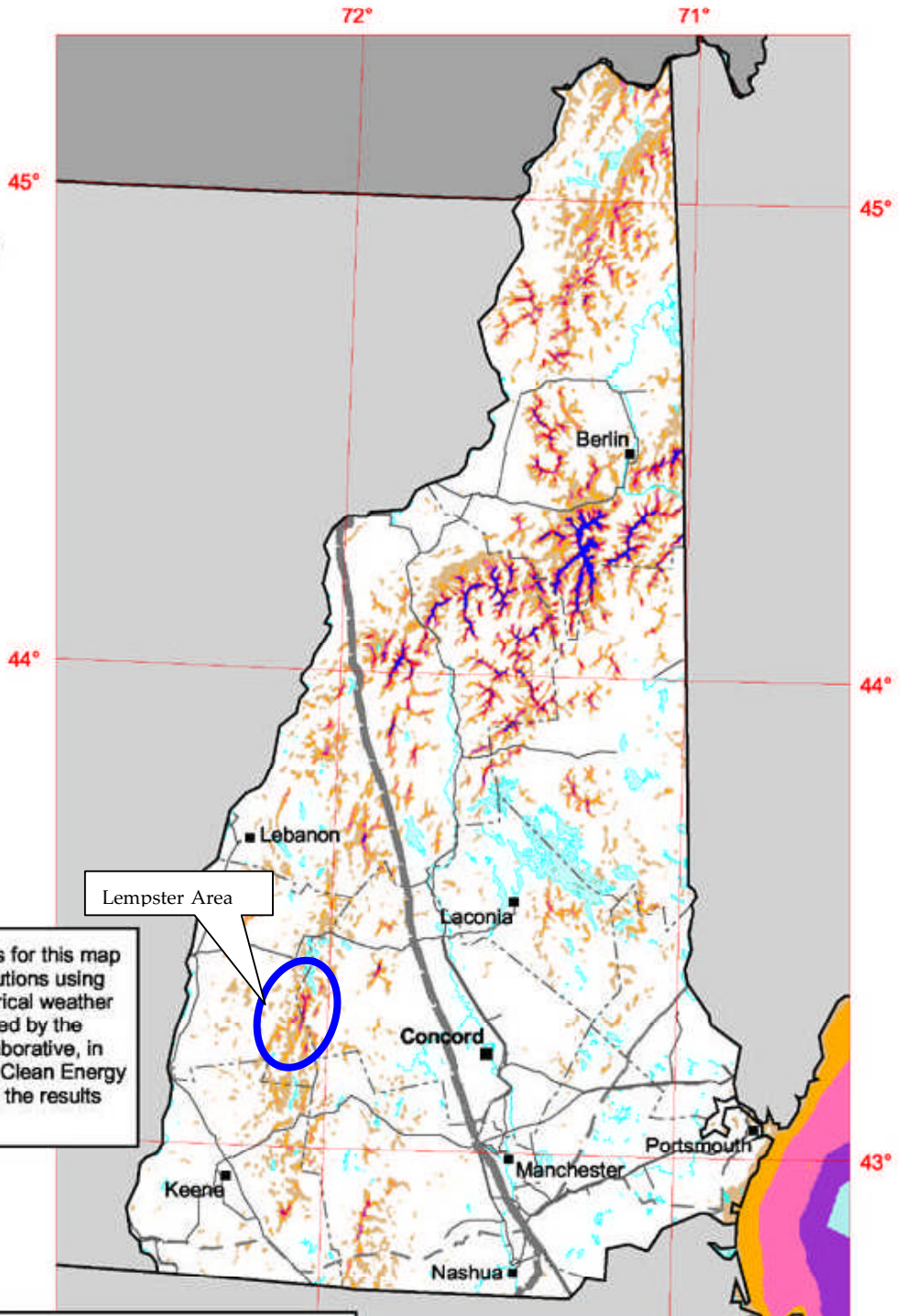


MASSACHUSETTS
TECHNOLOGY
COLLABORATIVE



New Hampshire

50 m Wind Power



Transmission Line*

Voltage (kV)

- 115
- 230
- - 345
- - 1000

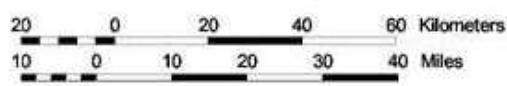
* Source: POWERmap, © 2003
Platts, a Division of the McGraw-Hill Companies

The annual wind power estimates for this map were produced by TrueWind Solutions using their Mesomap system and historical weather data. This work was commissioned by the Massachusetts Technology Collaborative, in conjunction with the Connecticut Clean Energy Fund and Northeast Utilities, and the results have been validated by NREL.

Wind Power Classification

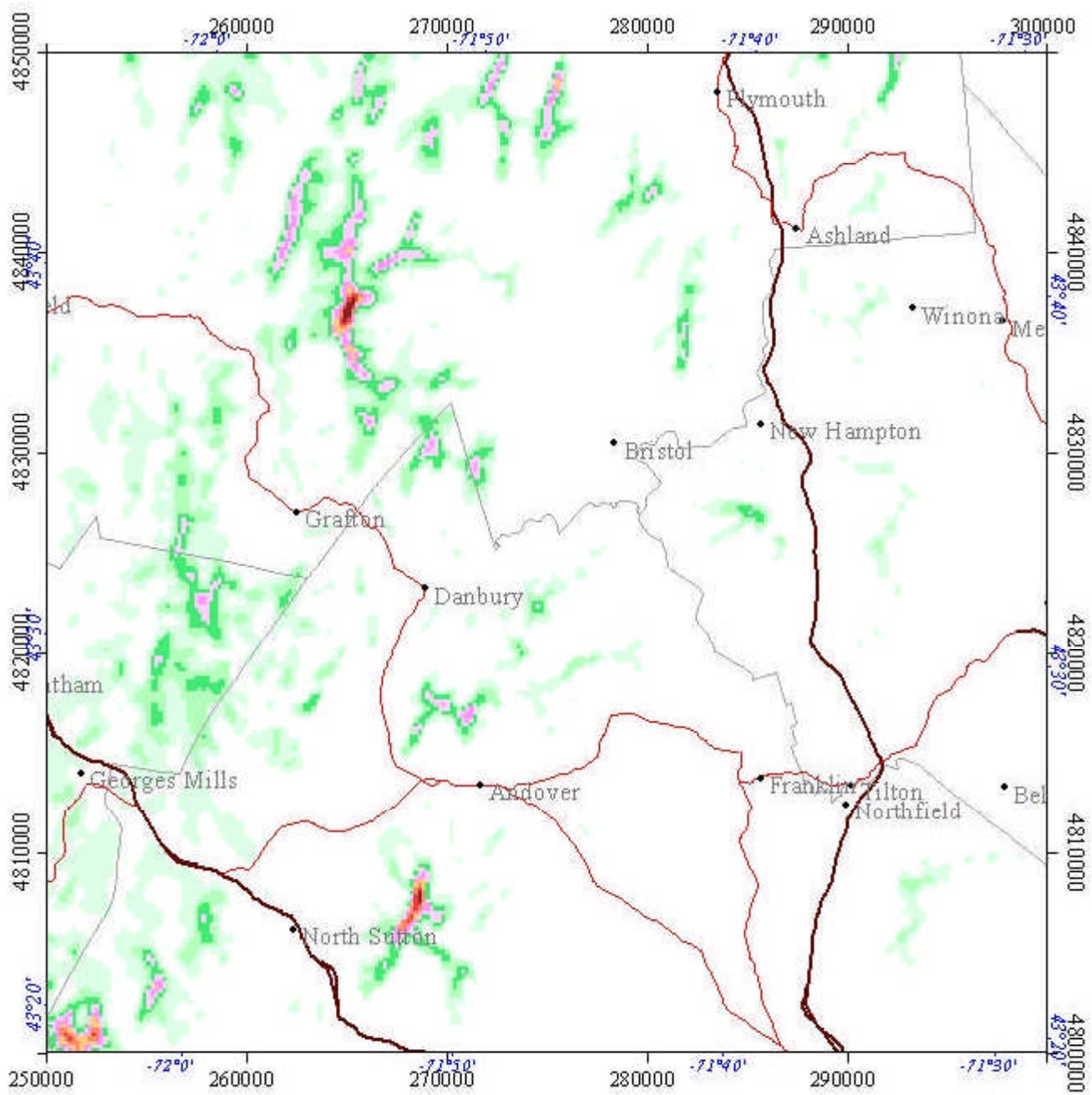
Wind Power Class	Resource Potential	Wind Power Density at 50 m W/m ²	Wind Speed ^a at 50 m m/s	Wind Speed ^a at 50 m mph
1	Poor	0 - 200	0.0 - 5.6	0.0 - 12.5
2	Marginal	200 - 300	5.6 - 6.4	12.5 - 14.3
3	Fair	300 - 400	6.4 - 7.0	14.3 - 15.7
4	Good	400 - 500	7.0 - 7.5	15.7 - 16.8
5	Excellent	500 - 600	7.5 - 8.0	16.8 - 17.9
6	Outstanding	600 - 800	8.0 - 8.8	17.9 - 19.7
7	Superb	> 800	> 8.8	> 19.7

^a Wind speeds are based on a Weibull k value of 2.0



U.S. Department of Energy
National Renewable Energy Laboratory





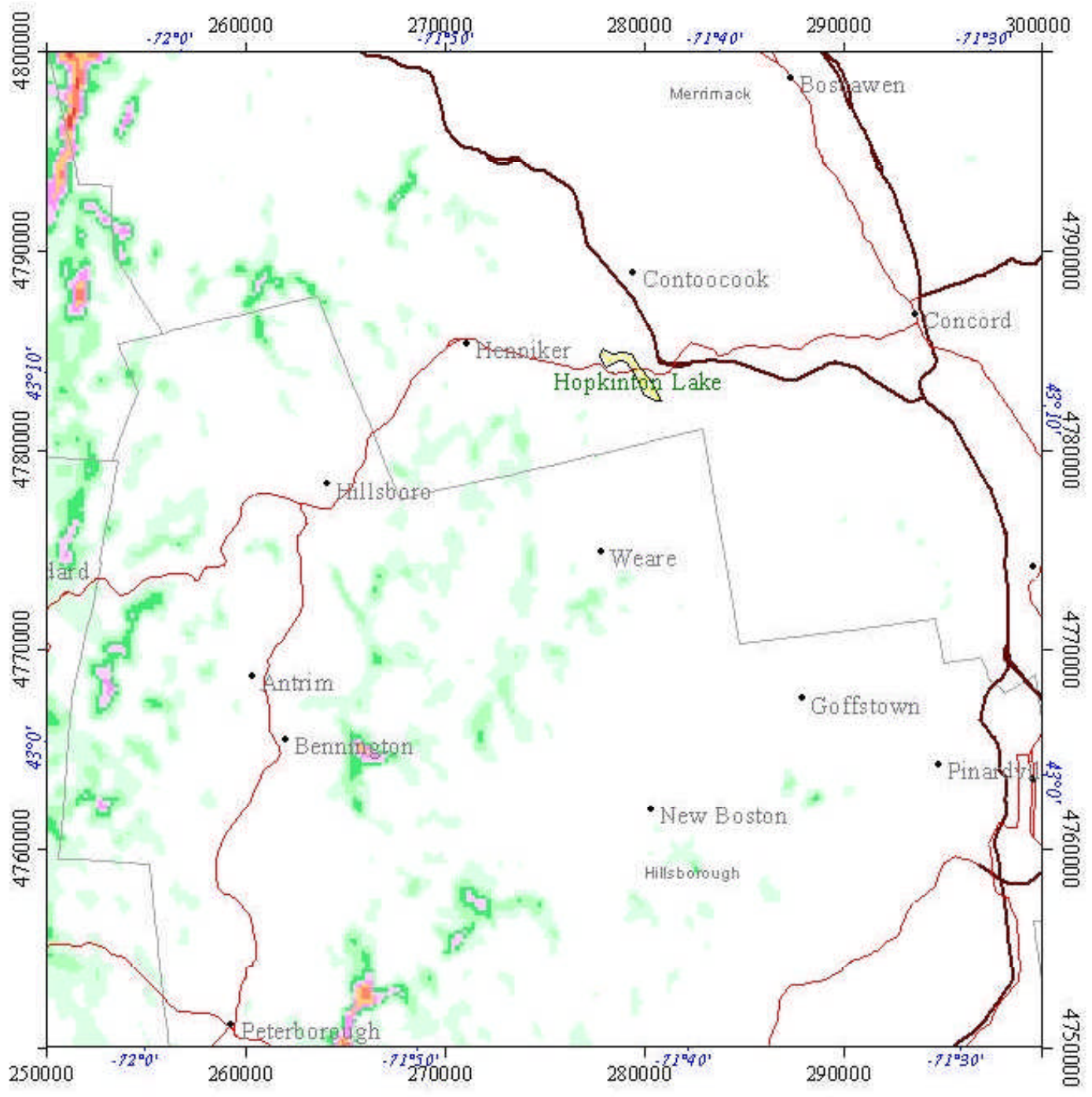
Map indicates area NE of Lemdster Wind Project area

Wind Resource

	Mean Speed	
	mph	m/s
[White]	< 12.3	< 5.5
[Light Green]	12.3 - 13.4	5.5 - 6.0
[Medium Green]	13.4 - 14.5	6.0 - 6.5
[Bright Green]	14.5 - 15.7	6.5 - 7.0
[Light Cyan]	15.7 - 16.8	7.0 - 7.5
[Cyan]	16.8 - 17.9	7.5 - 8.0
[Light Blue]	17.9 - 19.0	8.0 - 8.5
[Blue]	19.0 - 20.1	8.5 - 9.0
[Dark Blue]	20.1 - 21.3	9.0 - 9.5
[Black]	> 21.3	> 9.5

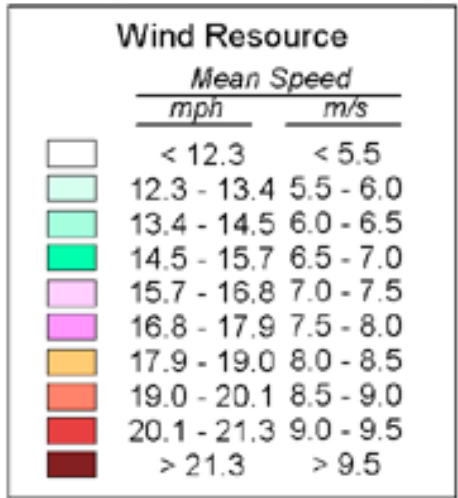
The New England Wind Map

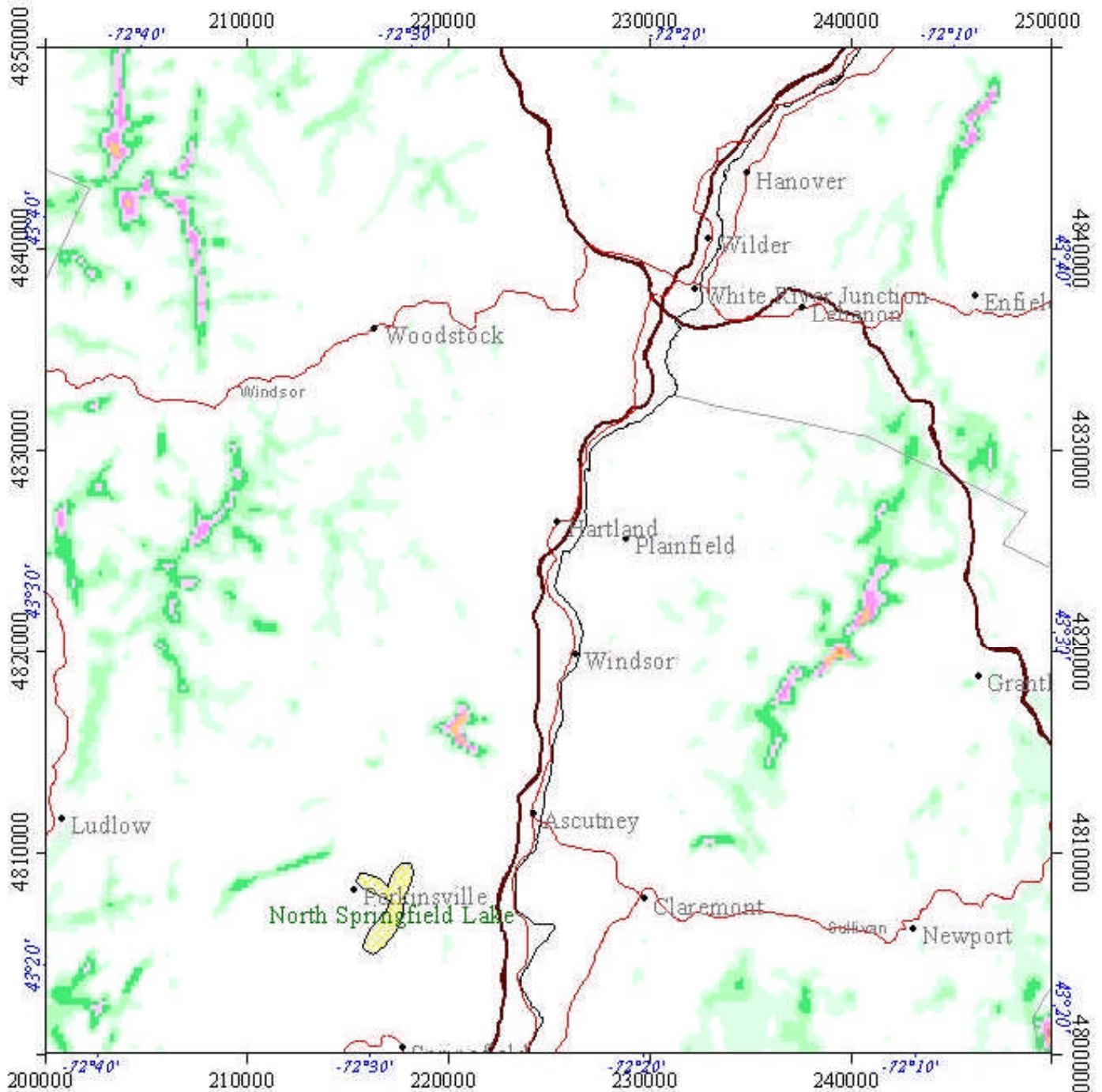




Map indicates area East of Lemdster Wind Project area

The New England Wind Map





Map indicates area North of Lemdster Wind Project area

Wind Resource

	Mean Speed	
	mph	m/s
[White]	< 12.3	< 5.5
[Lightest Green]	12.3 - 13.4	5.5 - 6.0
[Light Green]	13.4 - 14.5	6.0 - 6.5
[Medium Green]	14.5 - 15.7	6.5 - 7.0
[Bright Green]	15.7 - 16.8	7.0 - 7.5
[Yellow-Green]	16.8 - 17.9	7.5 - 8.0
[Yellow]	17.9 - 19.0	8.0 - 8.5
[Orange]	19.0 - 20.1	8.5 - 9.0
[Red-Orange]	20.1 - 21.3	9.0 - 9.5
[Dark Red]	> 21.3	> 9.5

The New England Wind Map



Average Wind Speeds - Lempster Mountain

