

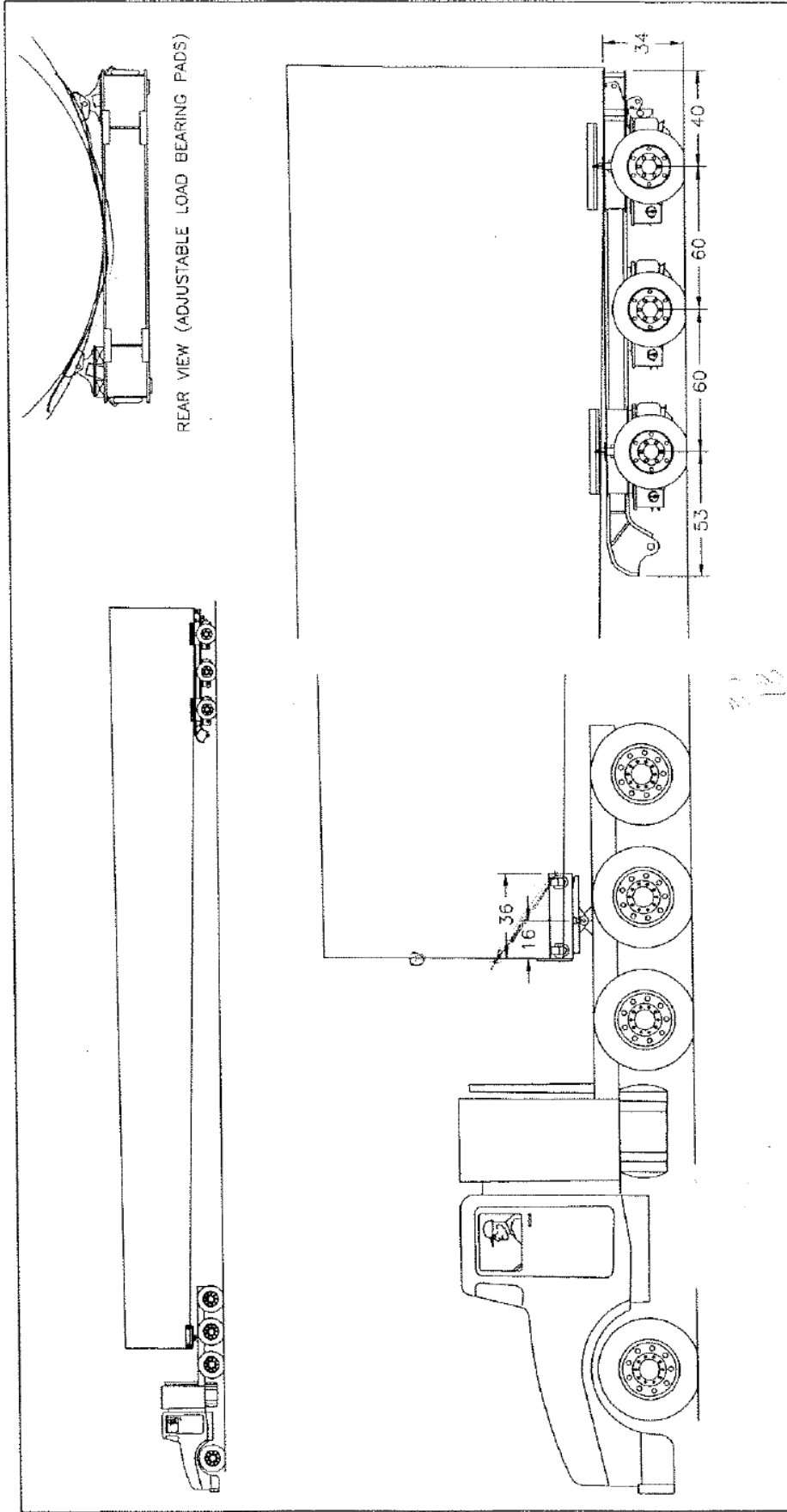
## **Oversize Transport Vehicle Specifications – Typical for Gamesa Turbines**

---

Drawings and data contained in the following images is provided as an example of typical oversize vehicles used in the transport of Gamesa G87 turbine equipment. Actual vehicle information will be provided by transportation contractors once selected.

Information reprinted with permission of Trail King Industries, Inc., Mitchell, South Dakota.

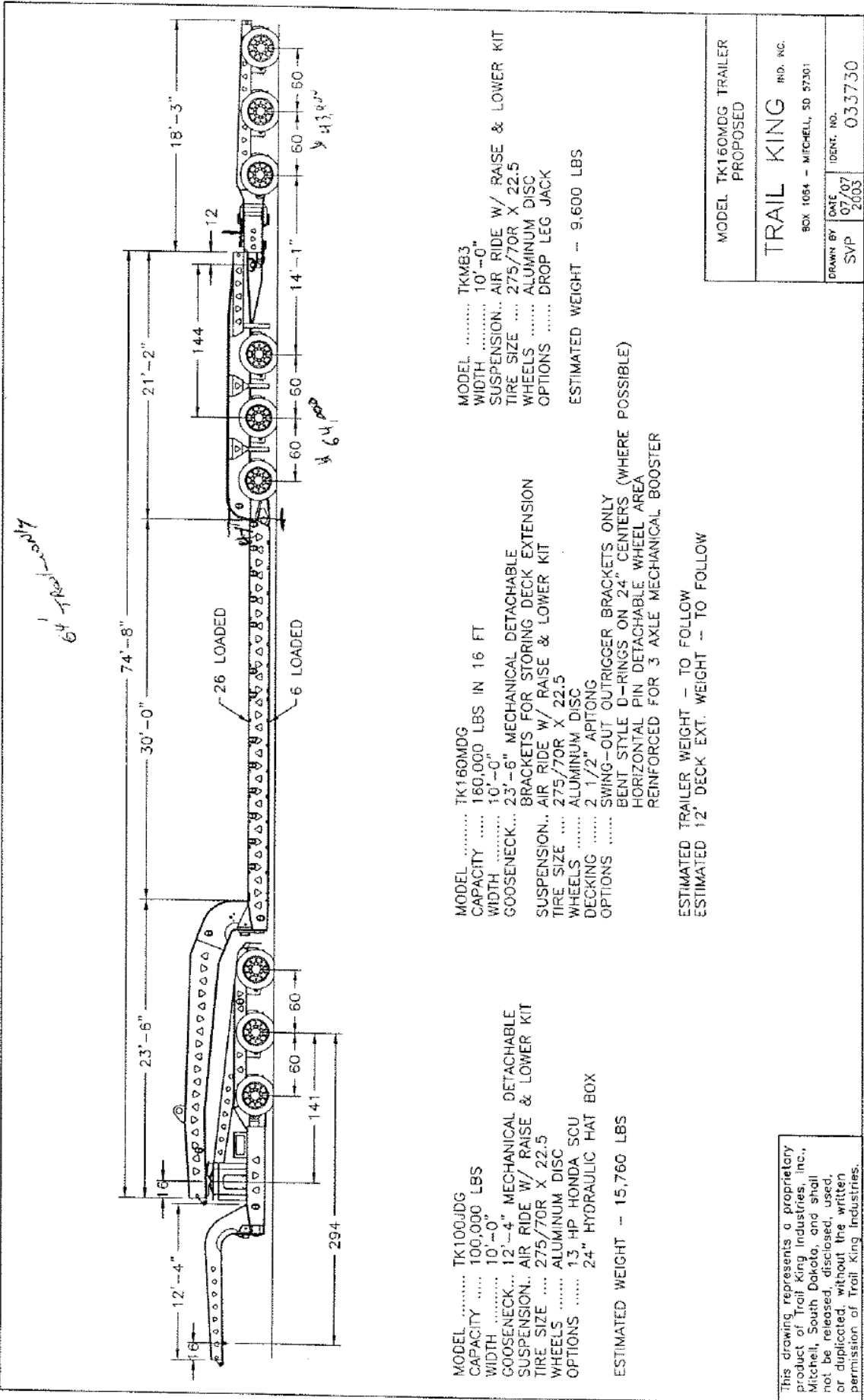
Blades



MODEL TK60SD DOLLY & LOAD BUNK	
TRAIL KING IND. INC.	
BOX 1064 - MITCHELL, SD 57301	
DRAWN BY SVP	DATE 05/28 2004
DESK. NO. 042931	

This drawing represents a proprietary product of Trail King Industries, Inc., Mitchell, South Dakota, and shall not be released, disclosed, used, or duplicated, without the written permission of Trail King Industries.

Nacelle



MODEL ..... TK100JDG  
 CAPACITY ..... 100,000 LBS  
 WIDTH ..... 10'-0"  
 GOOSENECK... 12'-4" MECHANICAL DETACHABLE  
 SUSPENSION.. AIR RIDE W/ RAISE & LOWER KIT  
 TIRE SIZE ... 275/70R X 22.5  
 WHEELS ..... ALUMINUM DISC  
 OPTIONS ..... 13 HP HONDA SCV  
 24" HYDRAULIC HAT BOX  
 ESTIMATED WEIGHT -- 15,760 LBS

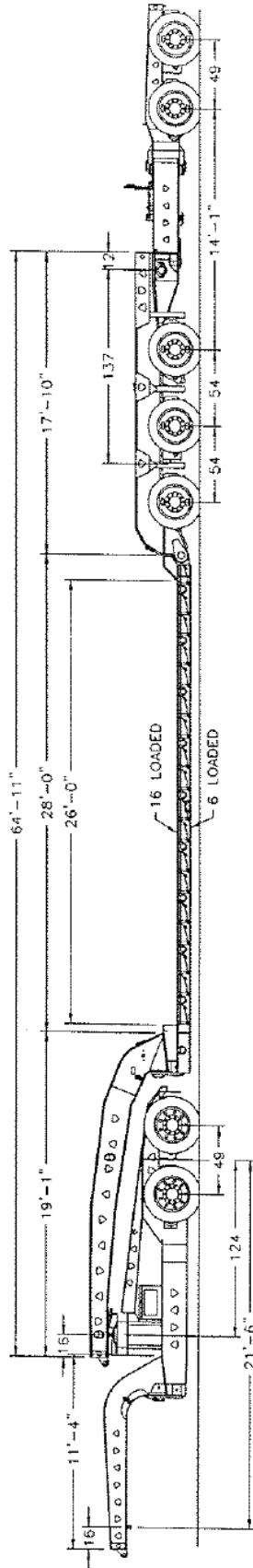
MODEL ..... TK160MDG  
 CAPACITY ..... 160,000 LBS IN 16 FT  
 WIDTH ..... 10'-0"  
 GOOSENECK... 23'-6" MECHANICAL DETACHABLE  
 SUSPENSION.. BRACKETS FOR STORING DECK EXTENSION  
 SUSPENSION.. AIR RIDE W/ RAISE & LOWER KIT  
 TIRE SIZE ... 275/70R X 22.5  
 WHEELS ..... ALUMINUM DISC  
 DECKING ..... 2 1/2" APITONG  
 OPTIONS ..... SWING-OUT OUTRIGGER BRACKETS ONLY  
 BENT STYLE D-RINGS ON 24" CENTERS (WHERE POSSIBLE)  
 HORIZONTAL PIN DETACHABLE WHEEL AREA  
 REINFORCED FOR 3 AXLE MECHANICAL BOOSTER  
 ESTIMATED TRAILER WEIGHT -- TO FOLLOW  
 ESTIMATED 12 DECK EXT. WEIGHT -- TO FOLLOW

MODEL ..... TKMBS  
 WIDTH ..... 10'-0"  
 SUSPENSION.. AIR RIDE W/ RAISE & LOWER KIT  
 TIRE SIZE ... 275/70R X 22.5  
 WHEELS ..... ALUMINUM DISC  
 OPTIONS ..... DROP LEG JACK  
 ESTIMATED WEIGHT -- 9,600 LBS

MODEL TK160MDG TRAILER PROPOSED	
TRAIL KING IND. INC. BOX 1064 - MITCHELL, SD 57301	
DRAWN BY SVP	DATE 07/07 2003
IDENT. NO. 033730	

This drawing represents a proprietary product of Trail King Industries, Inc., Mitchell, South Dakota, and shall not be released, disclosed, used, or duplicated, without the written permission of Trail King Industries.

# Base & Deck Insert



MODEL ..... TK80JGD  
 CAPACITY ..... 80,000 LBS  
 WIDTH ..... 8'-6"  
 GOOSENECK... 11'-4" MECHANICAL DETACHABLE  
 SUSPENSION.. AIR RIDE W/RAISE & LOWER KIT  
 TIRE SIZE ... 295/75RX22.5  
 WHEELS ..... ALUMINUM DISC (MACHINE FINISH)  
 OPTIONS ..... 13 HP HONDA SELF CONTAINED HYDRAULICS  
                   MOUNTED ON FRAME BELOW RAMP  
                   16" HYDRAULIC HATBOX  
 BETTS PS-1 REGISTRATION HOLDER  
 REMOVABLE MUD FLAPS ON SIDES OF GOOSENECK  
 SEE ORDER FOR MORE DETAILS

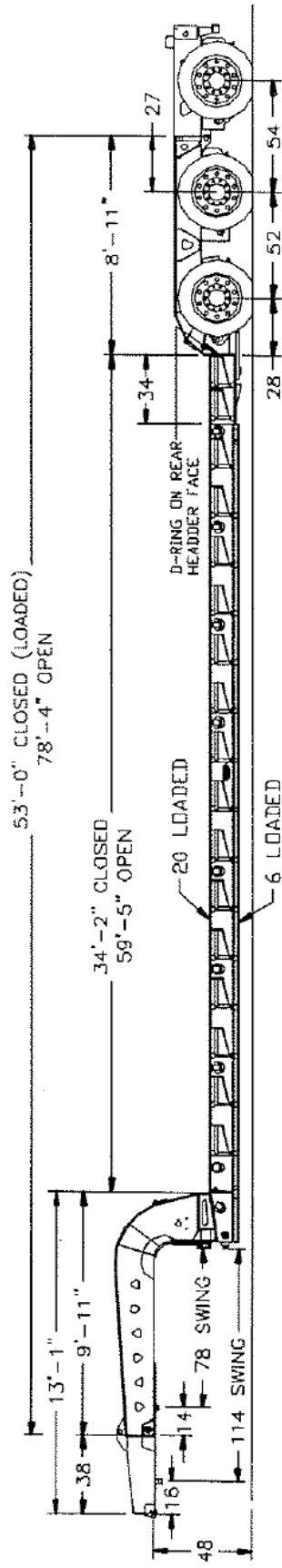
MODEL ..... TK120MDG  
 CAPACITY ..... 120,000 LBS IN 16 FT  
 WIDTH ..... 8'-6"  
 GOOSENECK... 19'-1" MECHANICAL DETACHABLE  
 SUSPENSION.. AIR RIDE W/RAISE & LOWER KIT  
 TIRE SIZE ... 275/70RX22.5  
 WHEELS ..... ALUMINUM DISC (MACHINE FINISH)  
 DECKING ..... NO DECKING  
 OPTIONS ..... MINI DECK (26'-0" OVERALL)  
                   2 1/2" APITONG OUTRIGGER PLANK IN CENTER OF DECK  
                   9" WIDE SWINGOUT OUTRIGGERS W/ BOLT IN BOTTOM BRCE  
                   REINFORCED FOR 2 AXLE MECHANICAL BOOSTER  
                   DETACHABLE WHEEL AREA WITH HORIZONTAL PINS  
                   AIR LIFT 3RD AXLE  
 GOOSENECK AND WHEEL AREA REINFORCED FOR 130,000 LBS  
 INTERCHANGEABLE WITH '03-1039,'03-1067,'03-2361,'04-4212,'04-4705  
 BRACKETS ON GOOSENECK FOR DECK EXTENSION  
 SHIM HOLDER ON WHEEL AREA  
 REMOVABLE MUD FLAPS ON SIDES OF GOOSENECK  
 BETTS PS-1 REGISTRATION HOLDER  
 3 PAIR OF D-RINGS ON GOOSENECK  
 SEE ORDER FOR MORE DETAILS

MODEL ..... TKMB2  
 WIDTH ..... 8'-6"  
 SUSPENSION.. AIR RIDE W/RAISE & LOWER KIT  
 TIRE SIZE ... 275/70RX22.5  
 WHEELS ..... ALUMINUM DISC (MACHINE FINISH)  
 BETTS PS-1 REGISTRATION HOLDER  
 SEE ORDER FOR MORE DETAILS

MODEL TK120MDG TRAILER SERIAL NO. 8961, 8962, 8963	
<b>TRAIL KING</b> <small>IND. INC.</small>	
<small>BOX 1064 - MITCHELL, SD 57301</small>	
<small>DRAWN BY</small> SRK	<small>DATE</small> 08/13 2004
<small>IDENT. NO.</small>	043850

This drawing represents a proprietary product of Trail King Industries, Inc., Mitchell, South Dakota, and shall not be released, disclosed, used, or duplicated, without the written permission of Trail King Industries.

Hub

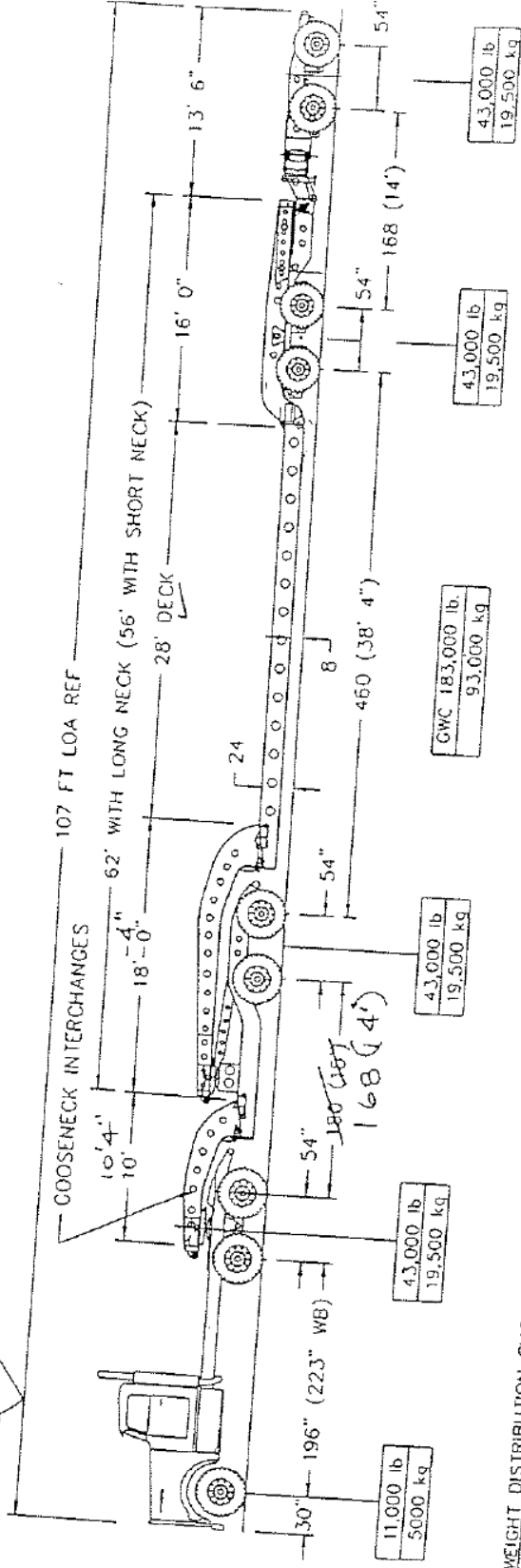
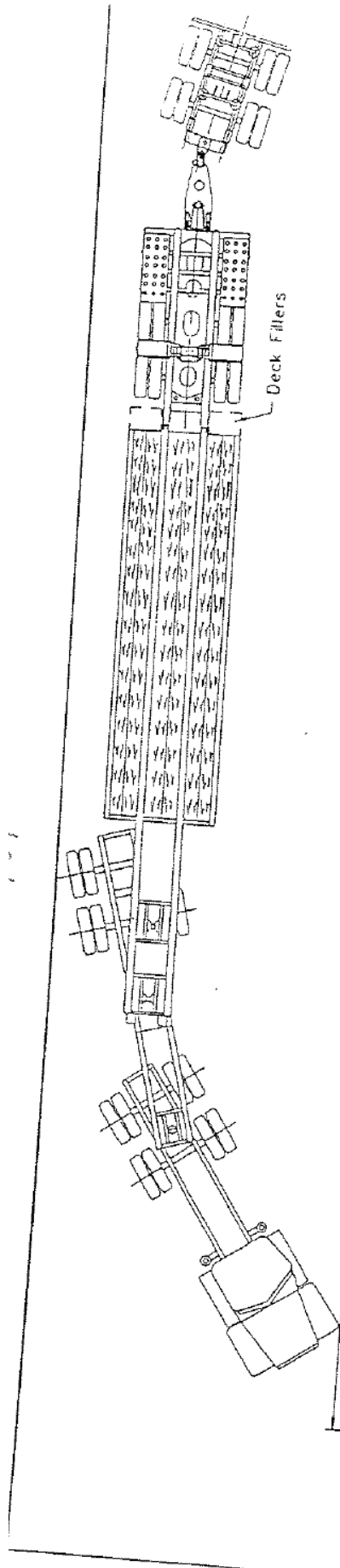


MODEL ..... TK90MED  
 CAPACITY ..... 70,000 LBS IN 16 FT  
 WIDTH ..... 8'-6"  
 GOOSENECK... 9'-11" W/38" FLIP EXTENSION TO 13'  
 SUSPENSION.. AIR RIDE W/ RAISE & LOWER KIT  
 TIRE SIZE ... 275/70R X 22.5  
 WHEELS ..... ALUMINUM DISC  
 DECKING ..... APPROX 1" WIDE 1 3/8" APITONG (RAISED)  
 OPTIONS ..... REMAINDER WILL BE ALUMINUM (FLUSH)  
 12" NON-REMOVABLE SWINGOUT OUTRIGGERS  
 8" WIDE 1 3/8" THICK APITONG OUTRIGGER PLANK FLUSH WHEN STORED  
 DETACHABLE WHEEL AREA  
 BOLSTER STYLE WHEEL AREA  
 OPEN BOOM TROUGH  
 REINFORCED FOR 3rd FLIP AXLE  
 12" I-BEAM SIDE RAIL  
 24" CROSSMEMBER SPACING (CENTER BAY)  
 12" CROSSMEMBER SPACING (OUTTER BAY)

ESTIMATED TRAILER WEIGHT - 25,900 LBS  
 ESTIMATED FLIP AXLE WEIGHT - 2,250 LBS

MODEL TK90MED TRAILER SERIAL NO. 8513	
TRAIL KING INC. INC.	
BOX 1064 - MITCHELL, SD 57501	
DRAWN BY CHAN	DATE 05/25 2004
ITEM NO. 043281	

Aspen - Top



\* WEIGHT DISTRIBUTION SHOWN IS SUBJECT TO GOVERNMENT APPROVAL AND TO THE CORRECT PLACEMENT OF THE LOAD'S CENTER OF GRAVITY ALL DIMENSIONS ARE APPROXIMATE

CALIFORNIA 9 AXLE, DROP STYLE JEEP

SCALE 1:96

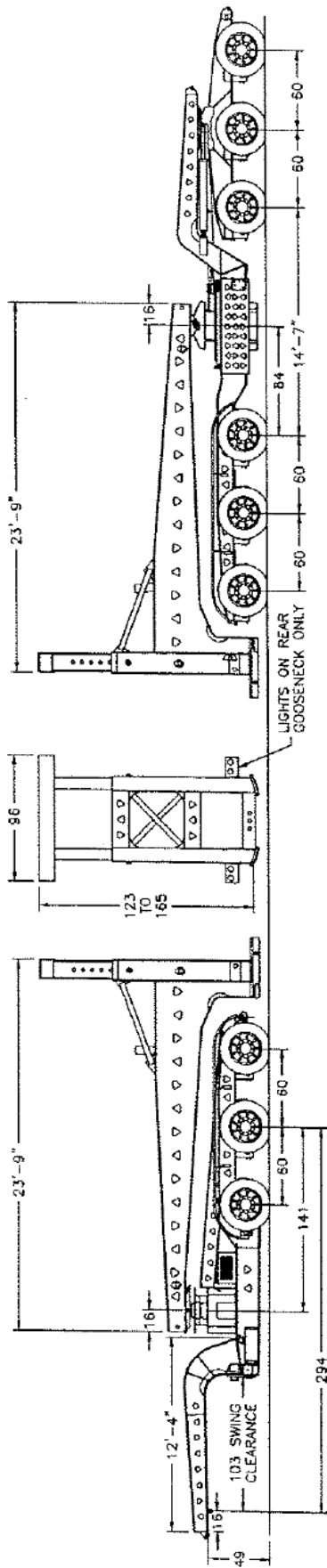
DATE 95.12.18

DRAWN BY

REVISION NO. A

RG65-2-2 ALL AIR SUSPENSIONS

Lower - Mid  
Upper - Mid



MODEL ..... TK100JDG JEEP  
CAPACITY ..... 100,000 LBS  
WIDTH ..... 10'-0"  
GOOSENECK... 12'-4" MECHANICAL DETACHABLE  
SUSPENSION.. AIR RIDE  
TIRE SIZE ... 295/75R X 22.5 RADIAL  
WHEELS ..... ALUMINUM DISC  
OPTIONS ..... STATIONARY 5TH WHEEL  
HYDRAULIC LIFT FOR 5TH WHEEL (24")  
13 HP HONDA SELF-CONTAINED HYDRAULICS (INBOARD)  
FENDERS  
PINTLE HITCH WITH AIR AND ELECTRICAL  
AIR RIDE RAISING AND LOWERING

MODEL ..... TK SCHNABLE SYSTEM  
CAPACITY ..... 160,000 LBS  
OPTIONS ..... VARIABLE HEIGHT 123 TO 165  
GOOSENECK SUPPORT BRACKETS  
LIGHT BAR ON REAR UNIT  
LOWER FLANGE LOCKS

MODEL ..... TK12DSD REAR STEERING DOLLY  
CAPACITY ..... 120,000 LBS  
WIDTH ..... 10'-0"  
SUSPENSION.. AIR RIDE  
TIRE SIZE ... 295/75R X 22.5  
WHEELS ..... ALUMINUM DISC  
OPTIONS ..... 24 HP HONDA SCU HYDRAULICS  
AUTOMATIC OR REMOTE MANUAL STEERING  
ADJUSTABLE STEERING RATIO  
16" HYDRAULIC LIFT  
FENDERS  
AIR RIDE RAISING AND LOWERING  
PUSH/TOW BAR @ REAR

TK160MDG SCHNABLE SYSTEM  
SERIAL # 4789, 4790,  
M4790A & M4790B

TRAIL KING IND. INC.

BOX 1084 - MITCHELL, SD 57301

DRAWN BY DATE IDENT. NO.

SVP 08/25/2003 034160

This drawing represents a proprietary product of Trail King Industries, Inc., Mitchell, South Dakota, and shall not be released, disclosed, used, or duplicated, without the written permission of Trail King Industries.