

THE STATE OF NEW HAMPSHIRE
SITE EVALUATION COMMITTEE

Docket No. 2012-01

Application of Antrim Wind Energy LLC
For a Certificate of Site and Facility
For Antrim Wind Energy in Antrim, New Hampshire

Received July 3, 2012
Request No. TS 1-38

Date of Response: July 12, 2012
Witness: John Guariglia

REQUEST:

Please provide a 10 mile view-shed map and identify the major potential view points within that area.

RESPONSE:

Figures TS-38a and TS-38b were created to illustrate the potential visibility of the proposed project within 10 miles of each turbine. In addition, supplemental receptors were identified between 5 and 10 miles. These receptors were identified solely using GIS data from GRANIT. It should be noted that individual receptor research, field evaluation between 5 and 10 miles were not completed, and only those conservation lands identified as having public access (based on GIS data) were included. Those receptors that were identified are included in the table below and on Figure TS-38a and TS-38b. In addition, as field observation was not completed, a determination of landscape unit is not included below.

Supplemental Visual Resources and Visibility Summary – 5 to 10 Miles						
Map ID	Receptor Name	Municipality	Project Visibility ¹	Factors Affecting Visibility		
				Viewer Group	Miles to Nearest Turbine	View Duration
73	Thompson #1	Deering	No	Recreational Users and Tourists	9.8	Stationary
74	Burke Family Wildlife Preserve	Deering	No	Recreational Users and Tourists	9.3	Stationary
75	Cilley I	Francestown	No	Recreational Users and Tourists	9.9	Stationary
76	Fisher Mill	Francestown	No	Recreational Users and Tourists	9.3	Stationary

¹ Based on Figure TS-38b Vegetated Viewshed Map

Supplemental Visual Resources and Visibility Summary – 5 to 10 Miles						
Map ID	Receptor Name	Municipality	Project Visibility ¹	Factors Affecting Visibility		
				Viewer Group	Miles to Nearest Turbine	View Duration
77	Harvey	Deering	No	Recreational Users and Tourists	8.6	Stationary
78	Jean O. Petty Conservation Easement	Deering	Yes	Recreational Users and Tourists	8.4	Stationary
79	Kampe	Francestown	No	Recreational Users and Tourists	9.7	Stationary
80	Shattuck Pond	Francestown	Yes	Recreational Users and Tourists	9.5	Stationary
81	Shattuck Pond II	Francestown	No	Recreational Users and Tourists	8.9	Stationary
82	Shattuck Pond III	Francestown	No	Recreational Users and Tourists	9.1	Stationary
83	Dinsmore Brook Conservation Area	Francestown	No	Recreational Users and Tourists	7.8	Stationary
84	F.L. Hill Wetlands	Francestown	No	Recreational Users and Tourists	8.9	Stationary
85	French Conservation Area	Deering	No	Recreational Users and Tourists	6.9	Stationary
86	Garabedian Addition	Deering	No	Recreational Users and Tourists	7.7	Stationary
87	High Five Property	Deering	Yes	Recreational Users and Tourists	6.9	Stationary
88	NH State Route 47	Bennington	Yes	Local Residents/ Local Workers / Through Travelers	5.8	Moving
89	John & Anna King Forest	Deering	Yes	Recreational Users and Tourists	6.3	Stationary
90	Newhall Field	Bennington	Yes	Recreational Users and Tourists	5.5	Stationary
91	McAlister Farm	Deering	Yes	Local Residents / Recreational Users and Tourists	5.1	Stationary
92	Blythe Tract	Deering	Yes	Recreational Users and Tourists	6.2	Stationary
93	Deering Preserve	Deering	Yes	Recreational Users and Tourists	6.5	Stationary
94	Spragg Tract	Deering	No	Recreational Users and Tourists	7.4	Stationary
95	The Hunters	Deering	No	Recreational Users and Tourists	6.2	Stationary
96	UCC Tract	Deering	No	Recreational Users and Tourists	7.3	Stationary

Supplemental Visual Resources and Visibility Summary – 5 to 10 Miles						
Map ID	Receptor Name	Municipality	Project Visibility ¹	Factors Affecting Visibility		
				Viewer Group	Miles to Nearest Turbine	View Duration
97	NH State Route 149	Deering	Yes	Local Residents/ Local Workers / Through Travelers	5.4	Moving
98	Deering	Deering	No	Local Residents / Local Workers / Through Travelers	8.1	Moving
99	Baghdoyan Parcel	Deering	No	Recreational Users and Tourists	8.3	Stationary
100	Cobbett Forest	Deering	No	Recreational Users and Tourists	8.9	Stationary
101	Dawson	Deering	Yes	Recreational Users and Tourists	7.7	Stationary
102	Deering Wildlife Habitat Reserve	Deering	Yes	Recreational Users and Tourists	7.7	Stationary
103	Town Forest	Francestown	No	Recreational Users and Tourists	8.7	Stationary
104	Rush Forest	Deering	Yes	Recreational Users and Tourists	7.8	Stationary
105	Sunderland	Deering	No	Recreational Users and Tourists	8.0	Stationary
106	Titcomb	Deering	Yes	Recreational Users and Tourists	7.0	Stationary
107	Dudley Pond	Deering	No	Recreational Users and Tourists	9.9	Stationary
108	Penelope & John Dawson Memorial Forest	Henniker	No	Recreational Users and Tourists	8.4	Stationary
109	Dawson Tract	Deering	No	Recreational Users and Tourists	8.6	Stationary
110	Dupont Tract	Deering	No	Recreational Users and Tourists	9.4	Stationary
111	Garland Easement	Deering	No	Recreational Users and Tourists	9.2	Stationary
112	Jarvis Easement	Deering	No	Recreational Users and Tourists	8.9	Stationary
113	Johnson, D & J	Deering	No	Recreational Users and Tourists	8.9	Stationary
114	North Road Wetland	Deering	No	Recreational Users and Tourists	9.2	Stationary
115	Paynter Lot	Deering	No	Recreational Users and Tourists	9.0	Stationary
116	Standke Tract	Deering	No	Recreational Users and Tourists	9.4	Stationary

Supplemental Visual Resources and Visibility Summary – 5 to 10 Miles						
Map ID	Receptor Name	Municipality	Project Visibility ¹	Factors Affecting Visibility		
				Viewer Group	Miles to Nearest Turbine	View Duration
117	SPNHF (King)	Francestown	No	Recreational Users and Tourists	8.7	Stationary
118	Farrar Marsh WMA	Hillsborough	No	Recreational Users and Tourists	8.8	Stationary
119	McCabe Tract	Henniker	Yes	Recreational Users and Tourists	8.4	Stationary
120	Thorburn	Hillsborough	Yes	Recreational Users and Tourists	8.0	Stationary
121	Hillsborough Railroad Bridge	Hillsborough	No	Local Residents / Recreational Users and Tourists	6.5	Stationary
122	Contoocook Mills Industrial District	Hillsborough	No	Local Residents / Recreational Users and Tourists	6.6	Stationary
123	Northfield / Mt Herman	Francestown	No	Recreational Users and Tourists	8.4	Stationary
124	Gov. John Butler Smith House	Hillsborough	Yes	Local Workers / Recreational Users and Tourists	6.6	Stationary
125	Grimes Field	Hillsborough	No	Recreational Users and Tourists	6.9	Stationary
126	Butler Park	Hillsborough	Yes	Recreational Users and Tourists	6.5	Stationary
127	Contoocook Mills Industrial District	Hillsborough	N	Local Residents / Recreational Users and Tourists	6.6	Stationary
128	Hardwick / Former Merrill Property	Francestown	No	Recreational Users and Tourists	9.9	Stationary
129	Hillsborough	Hillsborough	Yes	Local Residents / Local Workers / Through Travelers	6.2	Stationary
130	Allen Tract	Deering	Yes	Recreational Users and Tourists	7.1	Stationary
131	Fox State Forest	Hillsborough	Yes	Recreational Users and Tourists	5.8	Stationary
132	Goodband Property	Hillsborough	Yes	Recreational Users and Tourists	7.6	Stationary
134	Lewis Farm	Hillsborough	Yes	Recreational Users and Tourists	7.3	Stationary
135	Riverwalk	Hillsborough	Yes	Recreational Users and Tourists	6.7	Stationary
136	Young Forest Tract	Deering	No	Recreational Users and Tourists	7.2	Stationary

Supplemental Visual Resources and Visibility Summary – 5 to 10 Miles						
Map ID	Receptor Name	Municipality	Project Visibility ¹	Factors Affecting Visibility		
				Viewer Group	Miles to Nearest Turbine	View Duration
137	Beard Brook Park	Hillsborough	No	Recreational Users and Tourists	5.3	Stationary
138	Deering Fish + Game Club	Deering	No	Recreational Users and Tourists	5.1	Stationary
139	Hillsborough03-476	Hillsborough	No	Recreational Users and Tourists	5.8	Stationary
140	Jonathan Barnes House	Hillsborough Center	Yes	Local Residents / Recreational Users and Tourists	6.9	Stationary
141	Chute Forest	Hillsborough	Yes	Recreational Users and Tourists	5.6	Stationary
142	The Cottrell Place	Hillsborough	Yes	Recreational Users and Tourists	5.9	Stationary
143	Smith	Hillsborough	No	Recreational Users and Tourists	7.7	Stationary
144	Aiken Town Forest	Bradford	Yes	Recreational Users and Tourists	9.5	Stationary
145	Hillsborough04-02609	Hillsborough	No	Recreational Users and Tourists	9.7	Stationary
146	Low State Forest	Bradford	Yes	Recreational Users and Tourists	8.8	Stationary
147	Penhallow Lots	Bradford	No	Recreational Users and Tourists	9.7	Stationary
148	Andrews – LVT	Washington	No	Recreational Users and Tourists	10.0	Stationary
149	Bradford Bog	Bradford	No	Recreational Users and Tourists	8.5	Stationary
150	Bradford Hotel and Spring	Bradford	No	Recreational Users and Tourists	9.2	Stationary
151	Pillsbury State Park	Washington	Yes	Recreational Users and Tourists	8.8	Stationary
152	East Washington Town Beach	Washington	No	Recreational Users and Tourists	8.5	Stationary
153	East Washington	Washington	No	Local Residents / Local Workers / Through Travelers	8.3	Stationary
154	Journey's End	Washington	Yes	Recreational Users and Tourists	8.3	Stationary
155	Windsor Center	Windsor	No	Local Residents / Local Workers / Through Travelers	5.1	Stationary
156	L. Jones	Hillsborough	Yes	Recreational Users and Tourists	5.2	Stationary

Supplemental Visual Resources and Visibility Summary – 5 to 10 Miles						
Map ID	Receptor Name	Municipality	Project Visibility ¹	Factors Affecting Visibility		
				Viewer Group	Miles to Nearest Turbine	View Duration
157	Highland Lake Island	Washington	No	Recreational Users and Tourists	6.1	Stationary
158	Washington Common Historic District	Washington	Yes	Local Residents / Recreational Users and Tourists	8.7	Stationary
159	Washington Wayside Park	Washington	Yes	Recreational Users and Tourists	8.9	Stationary
160	Washington Town Common	Washington	Yes	Local Residents / Recreational Users and Tourists	8.7	Stationary
161	Washington	Washington	Yes	Local Residents / Local Workers / Through Travelers	8.4	Stationary
162	Ashuelot Wildlife Sanctuary	Washington	No	Recreational Users and Tourists	9.1	Stationary
163	Camp Morgan	Washington	No	Recreational Users and Tourists	8.5	Stationary
164	Clark Robinson Memorial Forest	Washington	Yes	Recreational Users and Tourists	7.6	Stationary
165	Washington Town Forest	Washington	No	Recreational Users and Tourists	8.2	Stationary
166	Elementary School Playground	Washington	No	Recreational Users and Tourists	9.2	Stationary
167	Jones Hall	Marlow	No	Recreational Users and Tourists	10.0	Stationary
168	Marlow Town Beach	Marlow	No	Recreational Users and Tourists	9.8	Stationary
169	NH State Route 10	Marlow	No	Local Residents/ Local Workers / Through Travelers	9.3	Stationary
170	Marlow Center	Marlow	No	Local Residents / Local Workers / Through Travelers	9.6	Stationary
171	A. Cohen	Marlow	No	Recreational Users and Tourists	9.4	Stationary
172	Kinson WMA	Marlow	No	Recreational Users and Tourists	9.6	Stationary
173	James M. Faulkner Elem. School	Stoddard	No	Local Residents / Local Workers	5.4	Stationary
174	Andorra Forest	Stoddard	Yes	Recreational Users and Tourists	5.2	Stationary
175	Crider Forest	Stoddard	No	Recreational Users and Tourists	5.2	Stationary

Supplemental Visual Resources and Visibility Summary – 5 to 10 Miles						
Map ID	Receptor Name	Municipality	Project Visibility ¹	Factors Affecting Visibility		
				Viewer Group	Miles to Nearest Turbine	View Duration
176	James L. + Eleanor S. Crider Forest	Stoddard	No	Recreational Users and Tourists	5.3	Stationary
177	Pitcher Mountain Fire Tower	Stoddard	Yes	Recreational Users and Tourists	6.3	Stationary
178	Monadnock-Sunapee Greenway Trail	Stoddard	Yes	Local Residents / Recreational Users and Tourists	4.7	Moving
179	King / Faulkner Easement	Stoddard	No	Recreational Users and Tourists	6.1	Stationary
180	Otter Brook Preserve	Sullivan	No	Recreational Users and Tourists	6.5	Stationary
181	Rumrill Family Forest	Stoddard	No	Recreational Users and Tourists	5.5	Stationary
182	Ellsville	Sullivan	No	Local Residents / Local Workers / Through Travelers	8.7	Stationary
183	Hoffman	Sullivan	No	Recreational Users and Tourists	7.8	Stationary
184	King & Faulkner / Trails Unlimited	Gilsum	No	Recreational Users and Tourists	8.7	Moving
185	Allison Nims Piper Memorial Forest	Sullivan	No	Recreational Users and Tourists	10.0	Stationary
186	Olsen Family Forest	Sullivan	No	Recreational Users and Tourists	8.8	Stationary
187	Sullivan Center	Sullivan	No	Local Residents / Local Workers / Through Travelers	9.8	Stationary
188	Central Elementary School	Sullivan	No	Local Residents / Local Workers	9.6	Stationary
189	East Sullivan	Sullivan	No	Local Residents / Local Workers / Through Travelers	8.6	Stationary
190	Sullivan Town Farm	Sullivan	Yes	Recreational Users and Tourists	9.5	Stationary
191	Thompson Tract	Sullivan	No	Recreational Users and Tourists	8.2	Stationary
192	Nelson Elementary School	Nelson	No	Local Residents / Local Workers	6.7	Stationary
193	Munsonville	Nelson	No	Local Residents / Local Workers / Through Travelers	6.0	Stationary
194	Nelson Schoolhouse	Nelson	No	Recreational Users and Tourists	6.2	Stationary

Supplemental Visual Resources and Visibility Summary – 5 to 10 Miles						
Map ID	Receptor Name	Municipality	Project Visibility ¹	Factors Affecting Visibility		
				Viewer Group	Miles to Nearest Turbine	View Duration
195	Bosworth Field	Nelson	No	Recreational Users and Tourists	5.8	Stationary
			No	Local Residents / Local Workers / Through Travelers		Stationary
196	Nelson Center	Nelson	No	Recreational Users and Tourists	6.1	Stationary
197	Fuller Lots	Nelson	No	Recreational Users and Tourists	6.1	Stationary
198	Iselin C. Lot	Nelson	No	Recreational Users and Tourists	6.4	Stationary
199	M&A Iselin Lot	Nelson	No	Recreational Users and Tourists	6.5	Stationary
	Mednick Street Meadow & Homestead		No	Recreational Users and Tourists		Stationary
200		Nelson			6.4	
201	Wildwood Cottage	Harrisville	No	Recreational Users and Tourists	6.4	Stationary
202	Clymer House	Harrisville	No	Recreational Users and Tourists	6.8	Stationary
	George Cheever Farm		No	Recreational Users and Tourists		Stationary
203		Harrisville			7.6	
204	Aldworth Manor	Harrisville	No	Recreational Users and Tourists	7.7	Stationary
	Timothy Bancroft House		No	Recreational Users and Tourists		Stationary
205		Harrisville			6.4	
206	Childs Bog	Harrisville	No	Recreational Users and Tourists	7.2	Stationary
207	Silver Lake Farm	Harrisville	No	Recreational Users and Tourists	9.0	Stationary
208	Kendall Cottage	Harrisville	No	Recreational Users and Tourists	8.7	Stationary
	Corban Farwell Homestead		No	Recreational Users and Tourists		Stationary
209		Harrisville			8.7	
	George Bemis House		No	Recreational Users and Tourists		Stationary
210		Harrisville			9.2	
	Elbridge G. Bemis House		No	Recreational Users and Tourists		Stationary
211		Harrisville			9.2	
	John Adams Homestead		No	Recreational Users and Tourists		Stationary
212		Harrisville			8.9	
			No	Local Residents / Local Workers / Through Travelers		Stationary
213	Chesham Village	Harrisville			9.2	

Supplemental Visual Resources and Visibility Summary – 5 to 10 Miles						
Map ID	Receptor Name	Municipality	Project Visibility ¹	Factors Affecting Visibility		
				Viewer Group	Miles to Nearest Turbine	View Duration
214	Silver Lake District	Harrisville	No	Local Residents / Local Workers / Through Travelers / Recreational Users and Tourists	7.8	Stationary
215	Badger Cottage	Nelson	No	Recreational Users and Tourists	7.6	Stationary
216	Delori Easement	Nelson	No	Recreational Users and Tourists	8.0	Stationary
217	Drury Shorefront	Harrisville	No	Recreational Users and Tourists	8.2	Stationary
218	Hall Easement	Nelson	No	Recreational Users and Tourists	7.4	Stationary
219	Lightning Hill	Nelson	No	Recreational Users and Tourists	7.7	Stationary
220	Loon Island	Harrisville	No	Recreational Users and Tourists	8.2	Stationary
221	Putnam Easement	Harrisville	No	Recreational Users and Tourists	8.1	Stationary
222	Hardwick	Francestown	No	Recreational Users and Tourists	9.5	Stationary
223	Sucker Brook Cove Wildlife Sanctuary	Nelson	No	Recreational Users and Tourists	7.5	Stationary
224	Thunder Hill	Nelson	No	Recreational Users and Tourists	8.0	Stationary
225	Willard Homestead	Harrisville	No	Recreational Users and Tourists	9.4	Stationary
226	Wells Memorial School	Harrisville	No	Local Residents / Local Workers	9.7	Stationary
227	Pottersville District	Harrisville	No	Recreational Users and Tourists	9.2	Stationary
228	Chesham Village	Harrisville	No	Local Residents / Local Workers / Through Travelers	9.1	Stationary
229	Taves Reservation	Roxbury	No	Recreational Users and Tourists	9.3	Stationary
230	Wellington Wells Memorial Forest	Harrisville	No	Recreational Users and Tourists	9.2	Stationary
231	Eli Morse Farm	Dublin	No	Recreational Users and Tourists	9.9	Stationary
232	Leighton State Forest	Dublin	No	Recreational Users and Tourists	9.9	Stationary
233	Asa Morse Farm	Dublin	No	Recreational Users and Tourists	9.5	Stationary

Supplemental Visual Resources and Visibility Summary – 5 to 10 Miles						
Map ID	Receptor Name	Municipality	Project Visibility ¹	Factors Affecting Visibility		
				Viewer Group	Miles to Nearest Turbine	View Duration
234	Fasnacloich	Harrisville	No	Recreational Users and Tourists	9.0	Stationary
235	Adams Farm	Harrisville	No	Recreational Users and Tourists	9.2	Stationary
236	NH State Route 101	Dublin	Yes	Local Residents/ Local Workers / Through Travelers	9.3	Moving
237	Beech Hill Summer Home District	Harrisville	No	Local Residents / Recreational Users and Tourists	8.3	Stationary
238	Dublin Lake Historic District	Dublin	Yes	Local Residents / Recreational Users and Tourists	8.4	Stationary
239	Brewster Forest	Dublin	No	Recreational Users and Tourists	8.8	Stationary
240	Bruce Forest	Dublin	No	Recreational Users and Tourists	9.8	Stationary
241	Dark Pond	Dublin	No	Recreational Users and Tourists	9.3	Stationary
242	Dublin Conservation Commission Land	Dublin	No	Recreational Users and Tourists	9.7	Stationary
243	Raubold House	Harrisville	No	Recreational Users and Tourists	7.7	Stationary
244	Point Comfort	Harrisville	No	Recreational Users and Tourists	7.8	Stationary
245	Persia Beal House	Harrisville	No	Recreational Users and Tourists	7.7	Stationary
246	Acre (The)	Harrisville	No	Recreational Users and Tourists	7.9	Stationary
247	Old Fire Tower Site	Francestown	No	Recreational Users and Tourists	8.0	Stationary
248	Harrisville Rural District	Harrisville	Yes	Recreational Users and Tourists	7.3	Stationary
249	Harrisville Historic District	Harrisville	Yes	Recreational Users and Tourists	6.7	Stationary
250	Harrisville Center	Harrisville	No	Recreational Users and Tourists	7.1	Stationary
251	Skatutakee Ridge Woodlot	Harrisville	No	Recreational Users and Tourists	7.6	Stationary
252	Greene Parcel	Hancock	No	Recreational Users and Tourists	5.9	Stationary

Supplemental Visual Resources and Visibility Summary – 5 to 10 Miles						
Map ID	Receptor Name	Municipality	Project Visibility ¹	Factors Affecting Visibility		
				Viewer Group	Miles to Nearest Turbine	View Duration
253	Sidney Williams Woods	Hancock	Yes	Recreational Users and Tourists	5.7	Stationary
254	Tenney Pond Lot	Hancock	No	Recreational Users and Tourists	5.0	Stationary
255	Hancock Rd.	Harrisville	No	Recreational Users and Tourists	6.7	Stationary
256	Merrill	Hancock	No	Recreational Users and Tourists	5.9	Stationary
257	Merrill Marsh Lot	Hancock	No	Recreational Users and Tourists	6.4	Stationary
258	Merrill Tract	Hancock	No	Recreational Users and Tourists	5.6	Stationary
259	Thacher Park	Hancock	No	Recreational Users and Tourists	5.0	Stationary
260	Townsend Farm	Dublin	No	Recreational Users and Tourists	8.6	Stationary
261	Jabez Townsend House	Harrisville	No	Recreational Users and Tourists	7.7	Stationary
262	Stationmaster's House	Harrisville	No	Recreational Users and Tourists	7.4	Stationary
263	Glenchrest	Harrisville	No	Recreational Users and Tourists	7.3	Stationary
264	Moses Eaton, Jr. House	Harrisville	No	Recreational Users and Tourists	7.4	Stationary
265	Gilchrest	Harrisville	No	Recreational Users and Tourists	7.7	Stationary
266	Bonds Corner Woodlot	Harrisville	No	Recreational Users and Tourists	7.6	Stationary
267	Appleton Farm	Dublin	No	Recreational Users and Tourists	9.3	Stationary
268	Beech Hill	Dublin	No	Recreational Users and Tourists	9.2	Stationary
269	Isaac Greenwood House	Dublin	No	Recreational Users and Tourists	9.3	Stationary
270	Moses Greenwood House	Dublin	No	Recreational Users and Tourists	9.5	Stationary
271	Ivanov-Rinov House	Dublin	No	Recreational Users and Tourists	9.8	Stationary
272	Markham House	Dublin	No	Recreational Users and Tourists	9.8	Stationary
273	Benjamin Marshall House	Dublin	No	Recreational Users and Tourists	9.7	Stationary

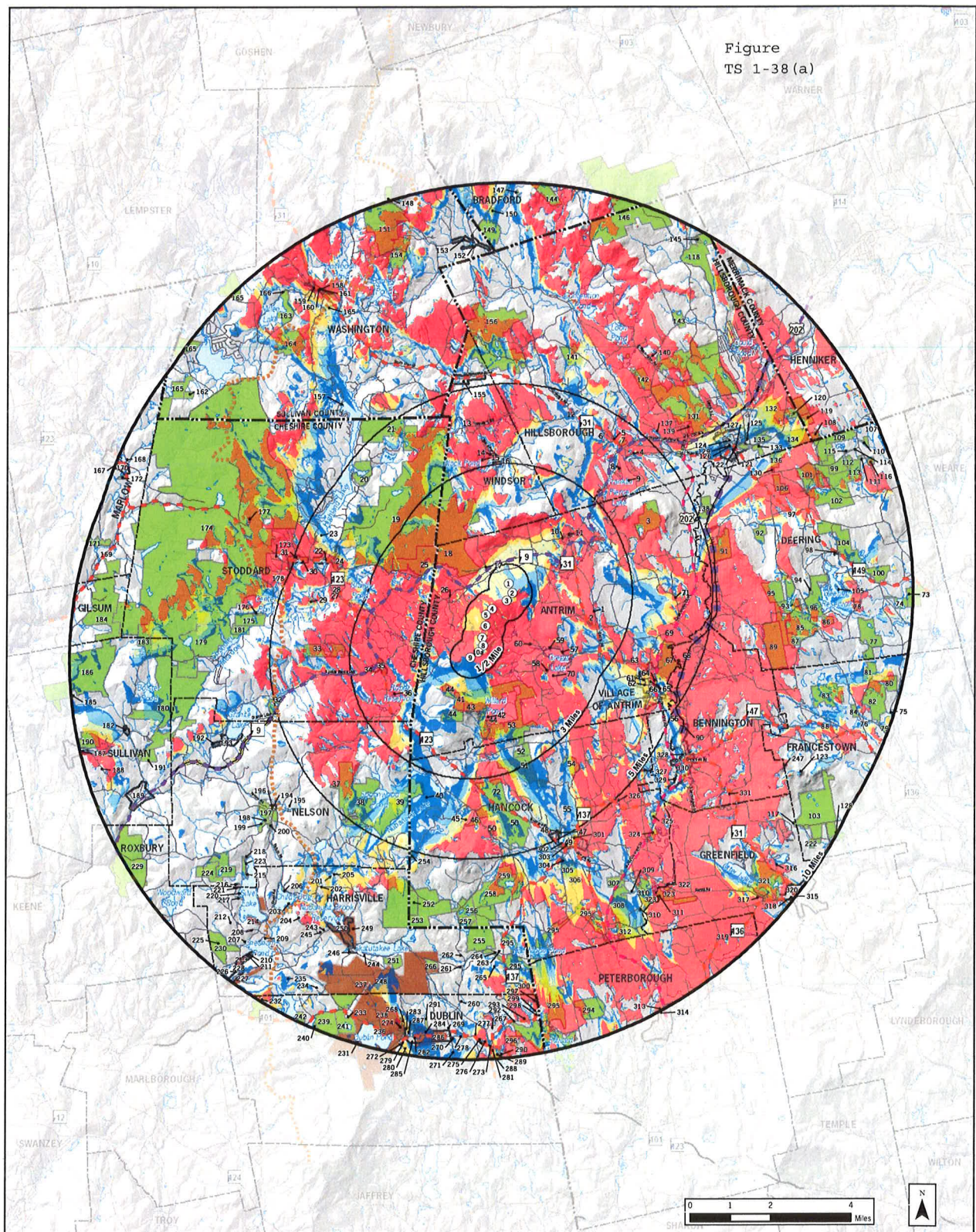
Supplemental Visual Resources and Visibility Summary – 5 to 10 Miles						
Map ID	Receptor Name	Municipality	Project Visibility ¹	Factors Affecting Visibility		
				Viewer Group	Miles to Nearest Turbine	View Duration
274	Spur House	Dublin	No	Recreational Users and Tourists	9.4	Stationary
275	Capt. Richard Strong House	Dublin	No	Recreational Users and Tourists	9.5	Stationary
276	Richard Strong Cottage	Dublin	No	Recreational Users and Tourists	9.5	Stationary
277	Henry Strongman House	Dublin	No	Recreational Users and Tourists	9.4	Stationary
278	William Strongman House	Dublin	Yes	Recreational Users and Tourists	9.4	Stationary
279	Mary Anne Wales House	Dublin	Yes	Recreational Users and Tourists	9.7	Stationary
280	Mason House	Dublin	No	Recreational Users and Tourists	9.8	Stationary
281	Wood House	Dublin	No	Recreational Users and Tourists	9.8	Stationary
282	Dublin Town Hall	Dublin	No	Local Workers / Recreational Users and Tourists	9.5	Stationary
283	Dublin School	Dublin	No	Local Residents / Local Workers	9.4	Stationary
284	Dublin Consolidated School	Dublin	No	Local Residents / Local Workers	9.4	Stationary
285	Town Ball Field	Dublin	No	Recreational Users and Tourists	9.6	Stationary
286	Dublin Village Historic District	Dublin	No	Local Residents / Recreational Users and Tourists	9.2	Stationary
287	Dublin Center	Dublin	Yes	Local Residents / Local Workers / Through Travelers	9.2	Stationary
288	Begley & Cutter	Dublin	No	Recreational Users and Tourists	10.0	Stationary
289	Hayes Easement	Dublin	No	Recreational Users and Tourists	9.8	Stationary
290	Peterson WMA	Dublin	No	Recreational Users and Tourists	9.7	Stationary
291	Town Parcel	Dublin	No	Recreational Users and Tourists	9.0	Stationary
292	Luke Richardson House	Dublin	No	Recreational Users and Tourists	9.1	Stationary

Supplemental Visual Resources and Visibility Summary – 5 to 10 Miles						
Map ID	Receptor Name	Municipality	Project Visibility ¹	Factors Affecting Visibility		
				Viewer Group	Miles to Nearest Turbine	View Duration
293	Appleton-- Hannaford House	Dublin	No	Recreational Users and Tourists	9.1	Stationary
294	Ben Rice Land	Peterborough	Yes	Recreational Users and Tourists	8.9	Stationary
295	Edward MacDowell Reservoir	Peterborough	Yes	Recreational Users and Tourists	6.7	Stationary
296	Wenigmann	Dublin	No	Recreational Users and Tourists	9.2	Stationary
297	John Richardson Homestead	Dublin	No	Recreational Users and Tourists	8.7	Stationary
298	Deacon Abijah, Richardson, House	Dublin	No	Recreational Users and Tourists	9.1	Stationary
299	Abijah Richardson, Sr. Homestead	Dublin	No	Recreational Users and Tourists	9.0	Stationary
300	NH State Route 137	Harrisville	Yes	Local Residents/ Local Workers / Through Travelers	4.7	Moving
301	Hancock Ballfield	Hancock	Yes	Recreational Users and Tourists	5.2	Stationary
302	Hancock Town Beach	Hancock	No	Recreational Users and Tourists	5.2	Stationary
303	Hancock Village Historic District	Hancock	Yes	Recreational Users and Tourists	5.1	Stationary
304	Huntley	Hancock	Yes	Recreational Users and Tourists	5.5	Stationary
305	Brown & Painchaud	Hancock	Yes	Recreational Users and Tourists	5.6	Stationary
306	Hayes	Hancock	No	Recreational Users and Tourists	6.0	Stationary
307	Jessup	Hancock	No	Recreational Users and Tourists	6.5	Stationary
308	Kimball Brook	Hancock	Yes	Recreational Users and Tourists	6.8	Stationary
309	Wilder Lot	Hancock	No	Recreational Users and Tourists	7.1	Stationary
310	Dillon Easement	Hancock	Yes	Recreational Users and Tourists	6.9	Stationary
311	Powder Mill Pond WMA - Dillon Tract	Greenfield	Yes	Recreational Users and Tourists	7.4	Stationary
312	Walcott	Hancock	Yes	Recreational Users and Tourists	7.3	Stationary

Supplemental Visual Resources and Visibility Summary – 5 to 10 Miles						
Map ID	Receptor Name	Municipality	Project Visibility ¹	Factors Affecting Visibility		
				Viewer Group	Miles to Nearest Turbine	View Duration
313	Con Val High School	Peterborough	Yes	Local Residents/ Local Workers	10.0	Stationary
			No	Local Residents / Local Workers / Through Travelers	10.0	Stationary
314	North Village	Peterborough				
315	Greenfield Meeting House	Greenfield	No	Recreational Users and Tourists	10.0	Stationary
316	Sunset Lake Town Beach	Greenfield	No	Recreational Users and Tourists	9.1	Stationary
317	Oak Park	Greenfield	Yes	Recreational Users and Tourists	9.3	Stationary
318	School Playground	Greenfield	No	Recreational Users and Tourists	9.9	Stationary
319	NH State Route 136	Peterborough	Yes	Local Residents/ Local Workers / Through Travelers	9.4	Moving
320	Greenfield Center	Greenfield	Yes	Local Residents / Local Workers / Through Travelers	9.6	Stationary
321	Greenfield State Park	Greenfield	Yes	Recreational Users and Tourists	8.5	Stationary
322	Hancock--Greenfield Bridge	Hancock	No	Recreational Users and Tourists	7.5	Stationary
323	Powder Mill Pond WMA	Greenfield	Yes	Recreational Users and Tourists	7.0	Stationary
324	Elmwood Junction	Hancock	No	Recreational Users and Tourists	6.2	Stationary
325	Morningstar Parcel	Hancock	No	Recreational Users and Tourists	5.8	Stationary
326	Town Park	Hancock	No	Recreational Users and Tourists	5.1	Stationary
327	Reavely Road Lot	Hancock	No	Recreational Users and Tourists	5.0	Stationary
328	Bennington Historical Society	Bennington	No	Recreational Users and Tourists	5.7	Stationary
329	Town Ballfield	Bennington	No	Recreational Users and Tourists	5.9	Stationary
330	Bennington Center	Bennington	Yes	Local Residents / Local Workers / Through Travelers	5.3	Stationary
331	Whittemore Lake Access/Town Beach	Bennington	No	Recreational Users and Tourists	7.2	Stationary

Supplemental Visual Resources and Visibility Summary – 5 to 10 Miles						
Map ID	Receptor Name	Municipality	Project Visibility ¹	Factors Affecting Visibility		
				Viewer Group	Miles to Nearest Turbine	View Duration

Figure
TS 1-38(a)



Antrim Wind Energy Project

Figure TS-38A - Topographic Viewshed Map

Turbine locations reflect September 8, 2011 data

- KEY**
- ③ Proposed Wind Turbine
 - Road Class**
 - Local Road
 - Highway
 - Divided Highway
 - Community Center Area
 - National Register of Historic Places
 - Recreational Area
 - Town Boundary
 - County Boundary

- Hiking Trail
- Federal Highway
- State Highway
- Scenic Highway
- Rail-Trail
- Number of Turbines Visible**
 - 1 - 2
 - 3 - 4
 - 5 - 6
 - 7 - 8
 - 9 - 10

PROJECT # 2011 - 11039 - Copyright © 2012 Saratoga Associates. All Rights Reserved.

This map is computer generated using data acquired by Saratoga Associates from various sources and is intended only for reference, conceptual planning and presentation purposes. This map is not intended for and should not be used to establish boundaries, property lines, location of objects or to provide any other information typically needed for construction or any other purpose when engineered plans or land surveys are required.

File Location: B:\2011\11039\Map\Views\111111\TopographicViewshed10Miles.mxd

SARATOGA ASSOCIATES

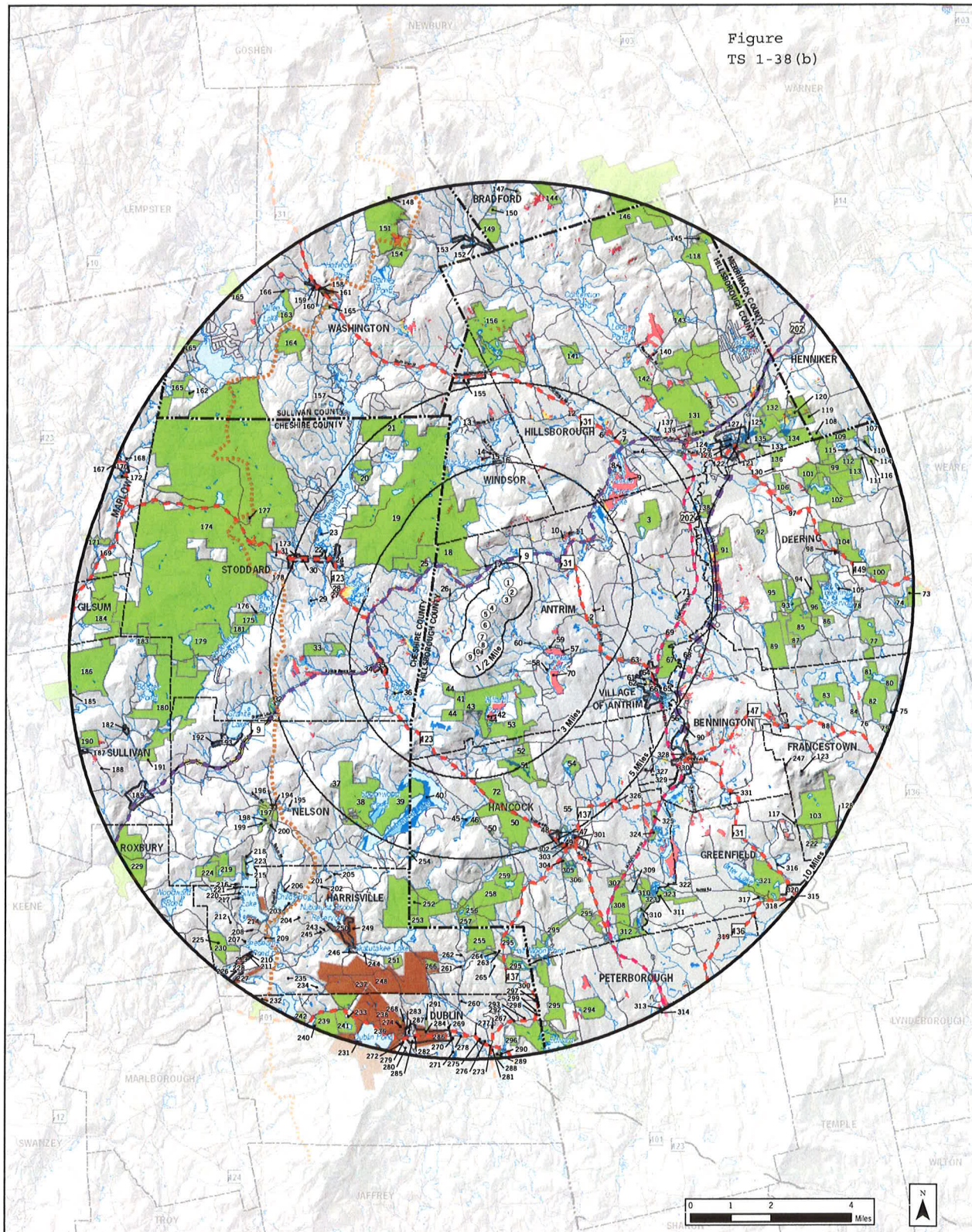
Landscape Architects, Architects,
Engineers, and Planners, P.C.

New York City • Saratoga Springs • Syracuse

ANTRIM WIND ENERGY LLC

July 2012

Figure
TS 1-38 (b)



Antrim Wind Energy Project

Figure TS-38B - Vegetated Viewshed Map*

Turbine locations reflect September 8, 2011 data

* Assumes uniform forest height of 40' (12.192 m) in forested areas.

KEY

③ Proposed Wind Turbine

Road Class

- Local Road
- Highway
- Divided Highway

Community Center Area

National Register of Historic Places

Recreational Area

Town Boundary

County Boundary

Hiking Trail

Federal Highway

State Highway

Scenic Highway

Rail-Trail

Number of Turbines Visible

1 - 2	7 - 8
3 - 4	9 - 10
5 - 6	

**SARATOGA
ASSOCIATES**

Landscape Architects, Architects,
Engineers, and Planners, P.C.

New York City • Saratoga Springs • Syracuse

**ANTRIM
WIND ENERGY LLC**

PROJECT # 2011 - 11039 - Copyright © 2012 Saratoga Associates. All Rights Reserved.

This map is computer generated using data acquired by Saratoga Associates from various sources and is intended only for reference, conceptual planning and presentation purposes. This map is not intended for and should not be used to establish boundaries, property lines, location of objects or to provide any other information typically needed for construction or any other purpose when engineered plans or land surveys are required.

File Location: B:\2011\11039\Maps\Views\11111\VegetatedViewshed10Miles.mxd

July 2012