

Wind Turbine SWT-3.2-113

Technical Specifications

Rotor

Type	3-bladed, horizontal axis
Position	Upwind
Diameter	113 m
Swept area	10.000 m ²
Speed range	6-15.5 rpm
Power regulation	Pitch regulation with variable speed
Rotor tilt	6 degrees

Blades

Type	Self-supporting
Blade length	55 m
Tip chord	0.63 m
Root chord	4.2 m
Aerodynamic profile	Siemens proprietary airfoils, FFA-W3-XXX
Material	GRE
Surface gloss	Semi-gloss, < 30 / ISO2813
Surface color	Light grey, RAL 7035

Aerodynamic Brake

Type	Full span pitching
Activation	Active, hydraulic

Load-Supporting Parts

Hub	Nodular cast iron
Main shaft	Nodular cast iron
Nacelle bed plate	Nodular cast iron

Mechanical Brake

Type	Hydraulic disc brake
Position	Generator rear end
Number of calipers	3

Canopy

Type	Totally enclosed
Surface gloss	Semi-gloss, 25-45 / ISO2813
Color	Light grey, RAL 7035

Generator

Type	Synchronous, PMG
Nominal power	3200 kW

Grid Terminals (LV)

Nominal power	3200 kW
Voltage	690 V
Frequency	50 Hz or 60 Hz

Yaw System

Type	Active
Yaw bearing	Externally geared
Yaw drive	8 (optional 10) electric gear motors
Yaw brake	Passive friction brake

Controller

Type	Microprocessor
SCADA system	WPS
Controller designation	SWTC, STC-1, SCS-1

Tower

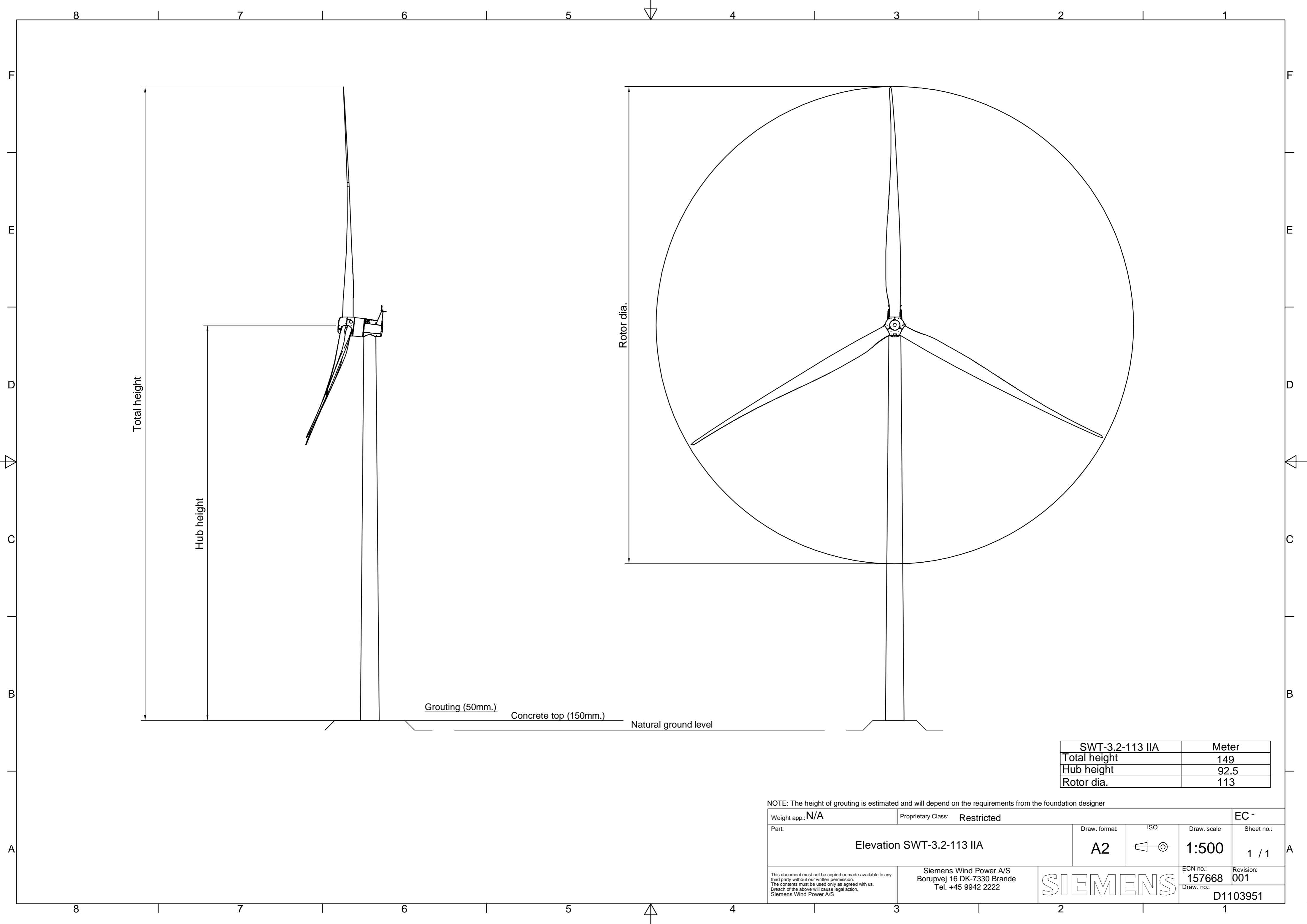
Type	Tubular steel tower or bolted steel shell tower
Hub height (m)	79.5 / 92.5 / 99.5 / 122 / 142
Corrosion protection	Painted
Surface gloss	Semi-gloss, 25-45 / ISO2813
Color	Light grey, RAL 7035

Operational Data

Cut-in wind speed	3-5 m/s
Nominal power at	12-13 m/s
Cut-out wind speed	25 m/s
Maximum 3 s gust	59.5 m/s (IEC version)

Weights (approximately / tons)

Rotor	67
Nacelle	78
Tower	75



SWT-3.2-113 IIA	Meter
Total height	149
Hub height	92.5
Rotor dia.	113

NOTE: The height of grouting is estimated and will depend on the requirements from the foundation designer

Weight app.: N/A	Proprietary Class: Restricted	EC -	
Part: Elevation SWT-3.2-113 IIA	Draw. format: A2	ISO	Draw. scale: 1:500
<small>This document must not be copied or made available to any third party without our written permission. The contents must be used only as agreed with us. Breach of the above will cause legal action. Siemens Wind Power A/S</small>	Siemens Wind Power A/S Borupvej 16 DK-7330 Brande Tel. +45 9942 2222	ECN no.: 157668 Draw. no.:	Revision: 001 D1103951
	SIEMENS		

F
E
D
C
B
A

F
E
D
C
B
A

8 7 6 5 4 3 2 1

8 7 6 5 4 3 2 1