

THIS DRAWING WAS PREPARED BY POWER ENGINEERS, INC. FOR A SPECIFIC PROJECT, TAKING INTO CONSIDERATION THE SPECIFIC AND UNIQUE REQUIREMENTS OF THE PROJECT. REUSE OF THIS DRAWING OR ANY INFORMATION CONTAINED IN THIS DRAWING FOR ANY PURPOSE IS PROHIBITED UNLESS WRITTEN PERMISSION FROM BOTH POWER AND POWERS CLIENT IS GRANTED.

TYPICAL WIRE INFORMATION:
 0KV 24 FIBER OPGW INSTALLED @ 4,500 LBS. NESC HVY. INITIAL (DISPLAYED @ 120 DEG. F)
 115KV 1590 ACSR 45/7 INSTALLED @ 11,400 LBS. NESC HVY. INITIAL (DISPLAYED @ 285 DEG. F)
 34.5KV 477 ACSR 18/1 INSTALLED @ 3,500 LBS. NESC HVY. INITIAL (DISPLAYED @ 212 DEG. F)
 0KV 4/0 ACSR 6/1 INSTALLED @ 2,500 LBS. NESC HVY. INITIAL (DISPLAYED @ 120 DEG. F)
 0KV 19 NO. 10 AW @ 4,200 LBS. NESC HVY. INITIAL (DISPLAYED @ 120 DEG. F)
 HENDRIX MESSENGER & 477 KCMIL SPACER CABLE @ 9,000 LBS. NESC HVY. INITIAL (DISPLAYED @ 120 DEG. F)

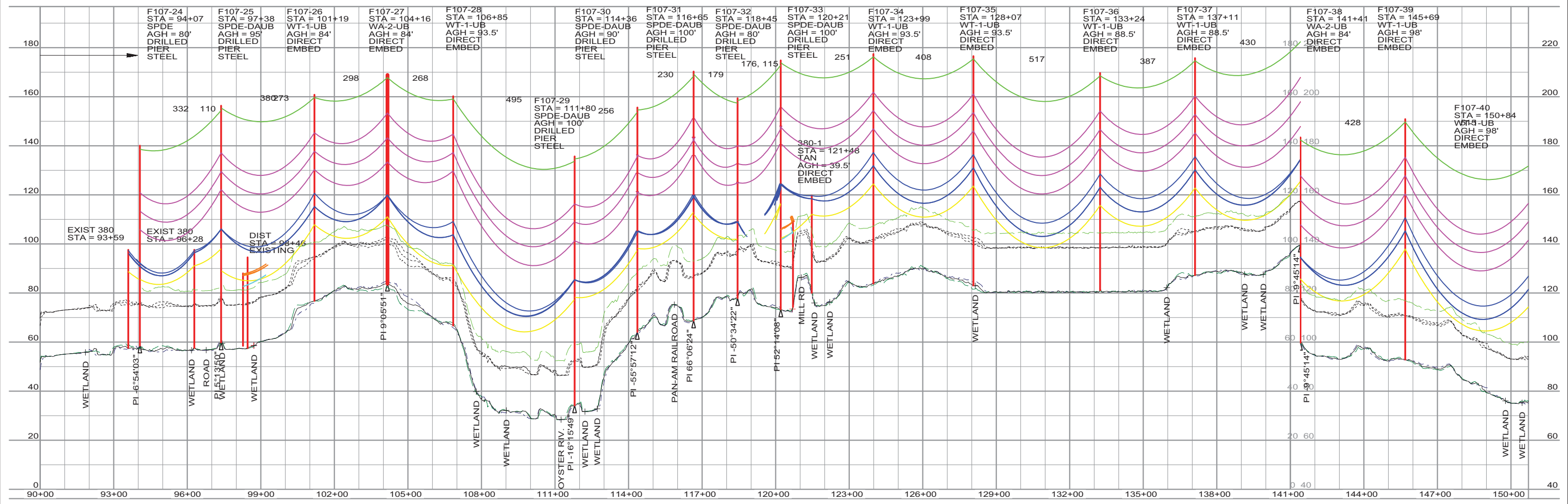
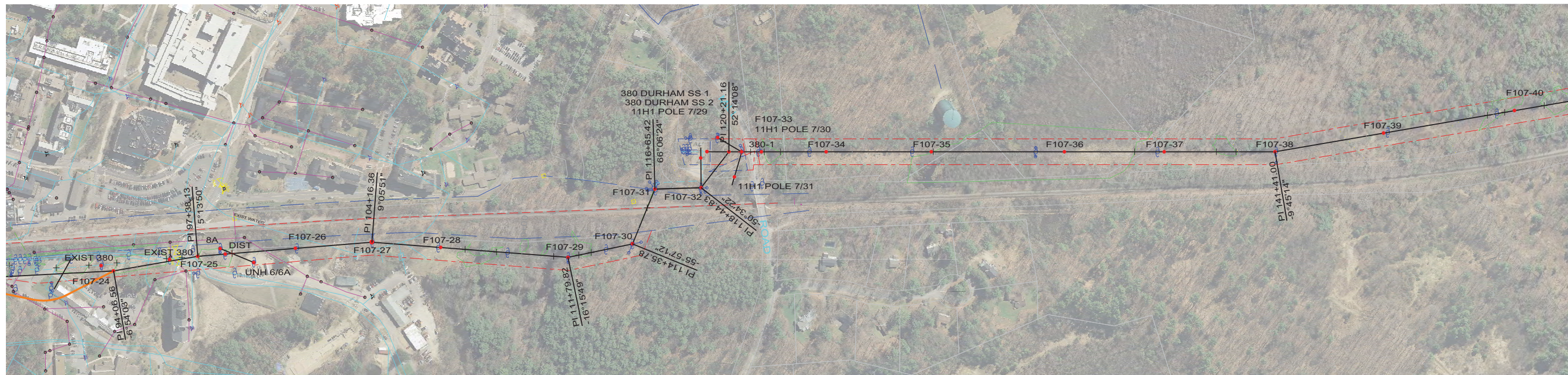
REV	REVISIONS	DATE	DRN	DSGN	CKD	APPD	REFERENCE DRAWINGS
K	RE-ISSUED FOR PERMITTING	12/23/2015	KMS	KMS	APJ		
J	RE-ISSUED FOR PERMITTING	11/13/2015	KMS	KMS	APJ		
I	ISSUED FOR REVIEW	8/21/2015	KMS	KMS	APJ		
H	ISSUED FOR REVIEW	7/24/2015	KMS	KMS	APJ		
G	RE-ISSUED FOR PERMITTING	4/24/2015	KMS	KMS	APJ		

DSGN	KMS	4/4/2014
DRN	KMS	4/4/2014
CKD	APJ	4/4/2014

SCALE: 1" = 200' HORIZ.
20' VERT.
FOR 22X34 DWG ONLY



PUBLIC SERVICE OF NEW HAMPSHIRE	JOB NUMBER	REV
SEACOAST RELIABILITY PROJECT	133005	△
F107 LINE & STRUCTURE LOCATIONS	DRAWING NUMBER	
	F10743002	



THIS DRAWING WAS PREPARED BY POWER ENGINEERS, INC. FOR A SPECIFIC PROJECT, TAKING INTO CONSIDERATION THE SPECIFIC AND UNIQUE REQUIREMENTS OF THE PROJECT. REUSE OF THIS DRAWING OR ANY INFORMATION CONTAINED IN THIS DRAWING FOR ANY PURPOSE IS PROHIBITED UNLESS WRITTEN PERMISSION FROM BOTH POWER AND POWERS CLIENT IS GRANTED.

TYPICAL WIRE INFORMATION:
 0KV 24 FIBER OPGW INSTALLED @ 4,500 LBS. NESC HVY. INITIAL (DISPLAYED @ 120 DEG. F)
 115KV 1590 ACSR 45/7 INSTALLED @ 11,400 LBS. NESC HVY. INITIAL (DISPLAYED @ 285 DEG. F)
 34.5KV 477 ACSR 18/1 INSTALLED @ 3,500 LBS. NESC HVY. INITIAL (DISPLAYED @ 212 DEG. F)
 0KV 4/0 ACSR 6/1 INSTALLED @ 2,500 LBS. NESC HVY. INITIAL (DISPLAYED @ 120 DEG. F)
 0KV 19 NO. 10 AW @ 4,200 LBS. NESC HVY. INITIAL (DISPLAYED @ 120 DEG. F)
 HENDRIX MESSENGER & 477 KCMIL SPACER CABLE @ 9,000 LBS. NESC HVY. INITIAL (DISPLAYED @ 120 DEG. F)

REV	REVISIONS	DATE	DRN	DSGN	CKD	APPD	REFERENCE DRAWINGS
L	RE-ISSUED FOR PERMITTING	1/21/2016	KMS	KMS	APJ		
K	RE-ISSUED FOR PERMITTING	12/23/2015	KMS	KMS	APJ		
J	RE-ISSUED FOR PERMITTING	11/13/2015	KMS	KMS	APJ		
I	ISSUED FOR REVIEW	8/21/2015	KMS	KMS	APJ		
H	ISSUED FOR REVIEW	7/24/2015	KMS	KMS	APJ		

DSGN	KMS	4/4/2014
DRN	KMS	4/4/2014
CKD	APJ	4/4/2014

SCALE: 1" = 200' HORIZ.
20' VERT.

FOR 22X34 DWG ONLY

POWER ENGINEERS

PUBLIC SERVICE OF NEW HAMPSHIRE

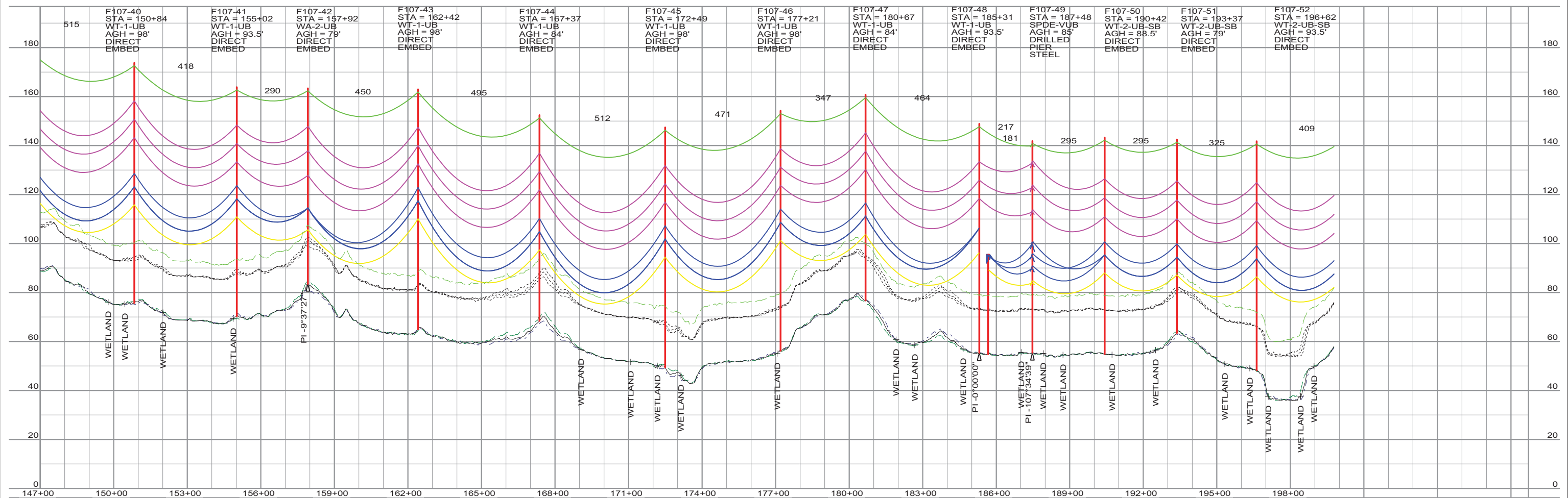
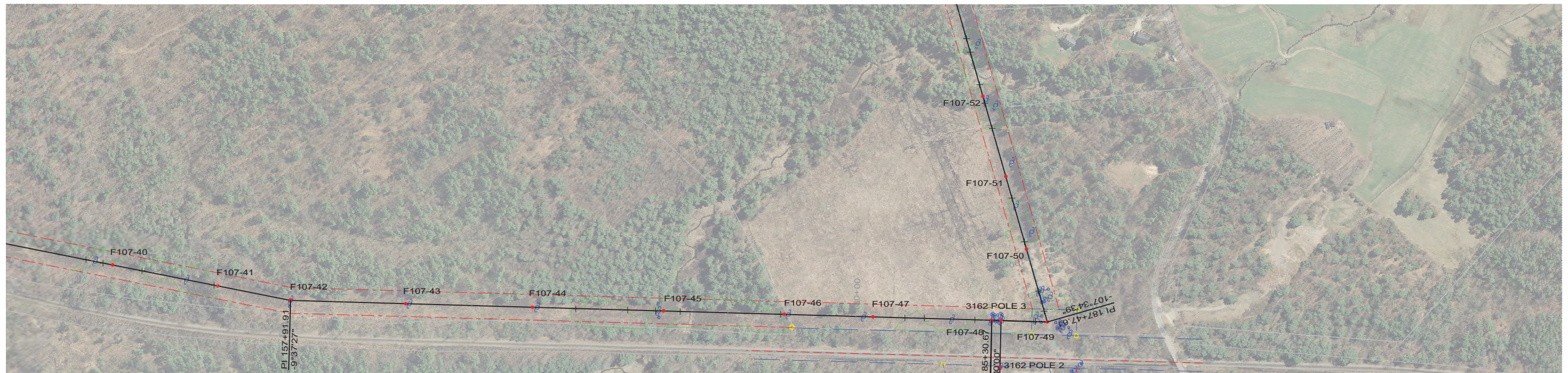
SEACOAST RELIABILITY PROJECT

F107 LINE & STRUCTURE LOCATIONS

JOB NUMBER: 133005

DRAWING NUMBER: F10743003

REV:



THIS DRAWING WAS PREPARED BY POWER ENGINEERS, INC. FOR A SPECIFIC PROJECT, TAKING INTO CONSIDERATION THE SPECIFIC AND UNIQUE REQUIREMENTS OF THE PROJECT. REUSE OF THIS DRAWING OR ANY INFORMATION CONTAINED IN THIS DRAWING FOR ANY PURPOSE IS PROHIBITED UNLESS WRITTEN PERMISSION FROM BOTH POWER AND POWERS CLIENT IS GRANTED.

TYPICAL WIRE INFORMATION:
 0KV 24 FIBER OPGW INSTALLED @ 4,500 LBS. NESC HVY. INITIAL (DISPLAYED @ 120 DEG. F)
 115KV 1590 ACSR 45/7 INSTALLED @ 11,400 LBS. NESC HVY. INITIAL (DISPLAYED @ 285 DEG. F)
 34.5KV 477 ACSR 18/1 INSTALLED @ 3,500 LBS. NESC HVY. INITIAL (DISPLAYED @ 212 DEG. F)
 0KV 4/0 ACSR 6/1 INSTALLED @ 2,500 LBS. NESC HVY. INITIAL (DISPLAYED @ 120 DEG. F)
 0KV 19 NO. 10 AW @ 4,200 LBS. NESC HVY. INITIAL (DISPLAYED @ 120 DEG. F)
 HENDRIX MESSENGER & 477 KCMIL SPACER CABLE @ 9,000 LBS. NESC HVY. INITIAL (DISPLAYED @ 120 DEG. F)

REV	REVISIONS	DATE	DRN	DSGN	CKD	APPD	REFERENCE DRAWINGS
L	RE-ISSUED FOR PERMITTING	1/21/2016	KMS	KMS	APJ		
K	RE-ISSUED FOR PERMITTING	12/23/2015	KMS	KMS	APJ		
J	RE-ISSUED FOR PERMITTING	11/13/2015	KMS	KMS	APJ		
I	ISSUED FOR REVIEW	8/21/2015	KMS	KMS	APJ		
H	ISSUED FOR REVIEW	7/24/2015	KMS	KMS	APJ		

DSGN	KMS	4/4/2014
DRN	KMS	4/4/2014
CKD	APJ	4/4/2014

SCALE: 1" = 200' HORIZ.
20' VERT.
FOR 22X34 DWG ONLY

PUBLIC SERVICE OF NEW HAMPSHIRE

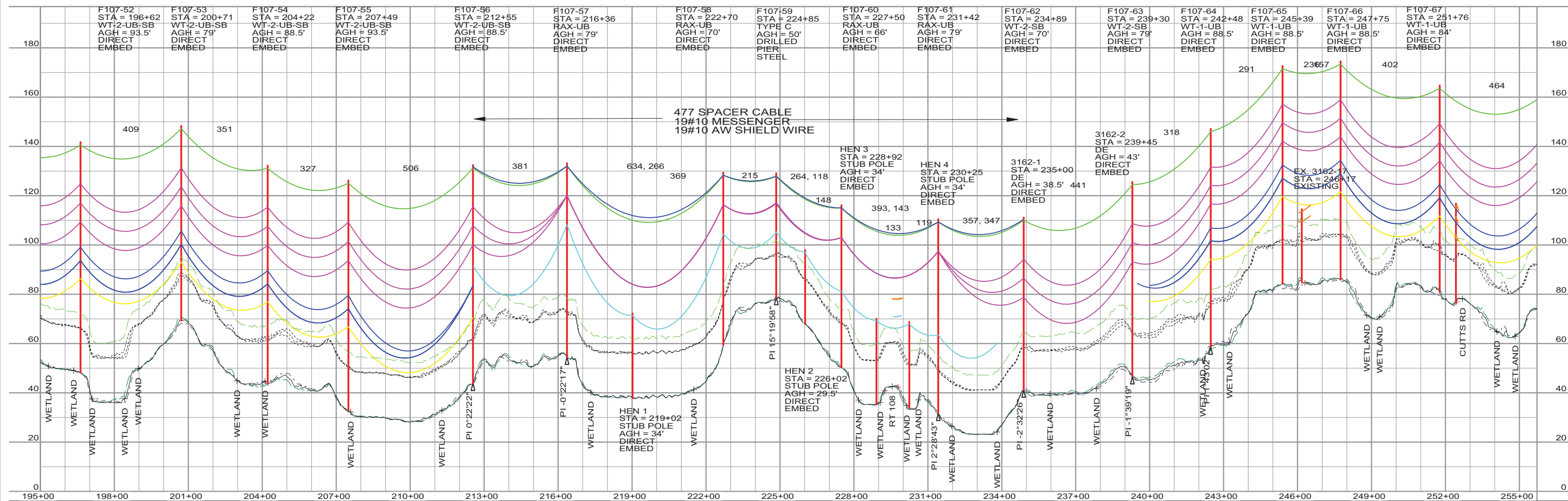
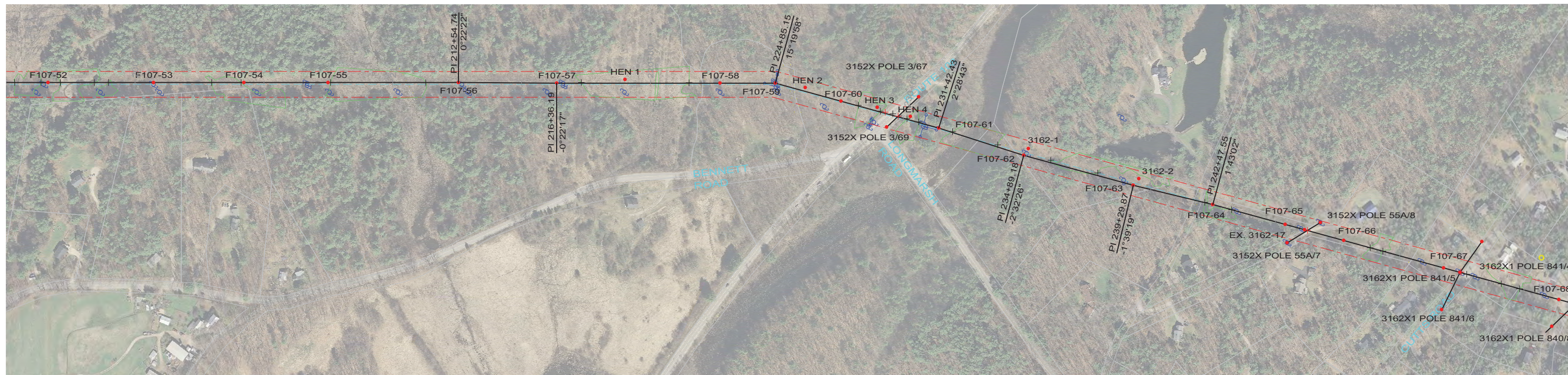
SEACOAST RELIABILITY PROJECT

F107 LINE & STRUCTURE LOCATIONS

JOB NUMBER
133005

DRAWING NUMBER
F10743004

REV
L



THIS DRAWING WAS PREPARED BY POWER ENGINEERS, INC. FOR A SPECIFIC PROJECT, TAKING INTO CONSIDERATION THE SPECIFIC AND UNIQUE REQUIREMENTS OF THE PROJECT. REUSE OF THIS DRAWING OR ANY INFORMATION CONTAINED IN THIS DRAWING FOR ANY PURPOSE IS PROHIBITED UNLESS WRITTEN PERMISSION FROM BOTH POWER AND POWER'S CLIENT IS GRANTED.

TYPICAL WIRE INFORMATION:
 0KV 24 FIBER OPGW INSTALLED @ 4,500 LBS. NESC HVY. INITIAL (DISPLAYED @ 120 DEG. F)
 115KV 1590 ACSR 45/7 INSTALLED @ 11,400 LBS. NESC HVY. INITIAL (DISPLAYED @ 285 DEG. F)
 34.5KV 477 ACSR 18/1 INSTALLED @ 3,500 LBS. NESC HVY. INITIAL (DISPLAYED @ 212 DEG. F)
 0KV 4/0 ACSR 6/1 INSTALLED @ 2,500 LBS. NESC HVY. INITIAL (DISPLAYED @ 120 DEG. F)
 0KV 19 NO. 10 AW @ 4,200 LBS. NESC HVY. INITIAL (DISPLAYED @ 120 DEG. F)
 HENDRIX MESSENGER & 477 KCMIL SPACER CABLE @ 9,000 LBS. NESC HVY. INITIAL (DISPLAYED @ 120 DEG. F)

REV	REVISIONS	DATE	DRN	DSGN	CKD	APPD	REFERENCE DRAWINGS
L	RE-ISSUED FOR PERMITTING	1/21/2016	KMS	KMS	APJ		
K	RE-ISSUED FOR PERMITTING	12/23/2015	KMS	KMS	APJ		
J	RE-ISSUED FOR PERMITTING	11/13/2015	KMS	KMS	APJ		
I	ISSUED FOR REVIEW	8/21/2015	KMS	KMS	APJ		
H	ISSUED FOR REVIEW	7/24/2015	KMS	KMS	APJ		

DSGN	KMS	4/4/2014
DRN	KMS	4/4/2014
CKD	APJ	4/4/2014

SCALE: 1" = 200' HORIZ.
20' VERT.

FOR 22X34 DWG ONLY

PUBLIC SERVICE OF NEW HAMPSHIRE

SEACOAST RELIABILITY PROJECT

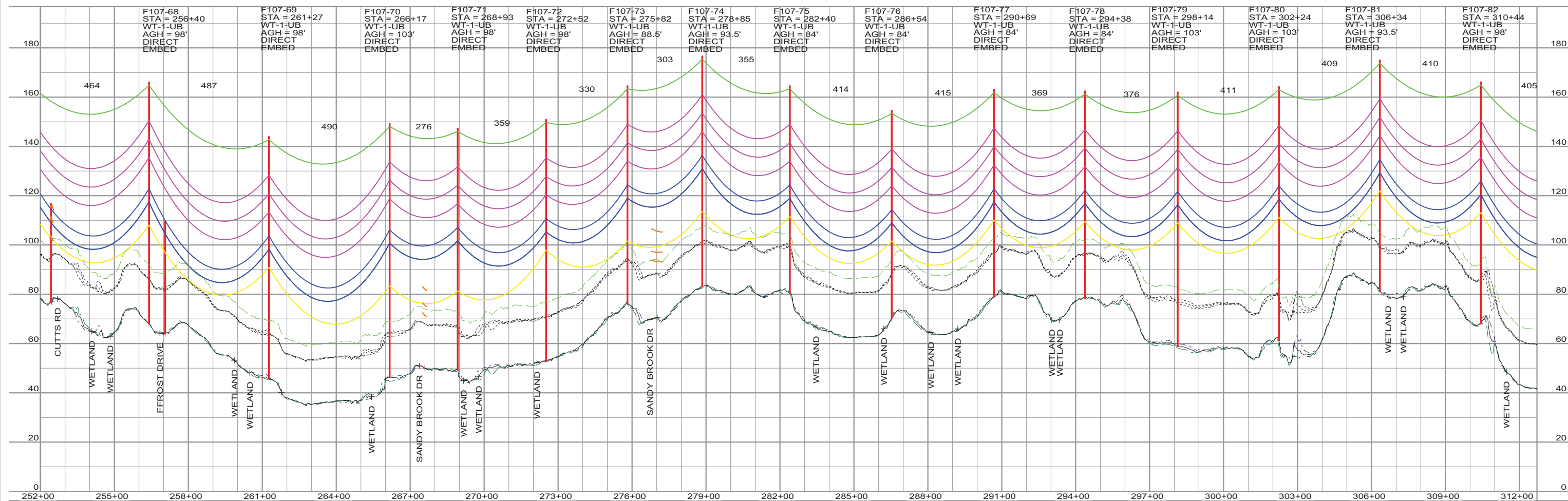
F107 LINE & STRUCTURE LOCATIONS

JOB NUMBER
133005

DRAWING NUMBER
F10743005

REV

1



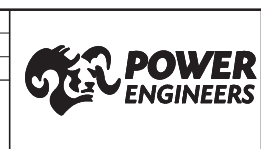
THIS DRAWING WAS PREPARED BY POWER ENGINEERS, INC. FOR A SPECIFIC PROJECT, TAKING INTO CONSIDERATION THE SPECIFIC AND UNIQUE REQUIREMENTS OF THE PROJECT. REUSE OF THIS DRAWING OR ANY INFORMATION CONTAINED IN THIS DRAWING FOR ANY PURPOSE IS PROHIBITED UNLESS WRITTEN PERMISSION FROM BOTH POWER AND POWER'S CLIENT IS GRANTED.

TYPICAL WIRE INFORMATION:
 0KV 24 FIBER OPGW INSTALLED @ 4,500 LBS. NESC HVY. INITIAL (DISPLAYED @ 120 DEG. F)
 115KV 1590 ACSR 45/7 INSTALLED @ 11,400 LBS. NESC HVY. INITIAL (DISPLAYED @ 285 DEG. F)
 34.5KV 477 ACSR 18/1 INSTALLED @ 3,500 LBS. NESC HVY. INITIAL (DISPLAYED @ 212 DEG. F)
 0KV 4/0 ACSR 6/1 INSTALLED @ 2,500 LBS. NESC HVY. INITIAL (DISPLAYED @ 120 DEG. F)
 0KV 19 NO. 10 AW @ 4,200 LBS. NESC HVY. INITIAL (DISPLAYED @ 120 DEG. F)
 HENDRIX MESSENGER & 477 KCMIL SPACER CABLE @ 9,000 LBS. NESC HVY. INITIAL (DISPLAYED @ 120 DEG. F)

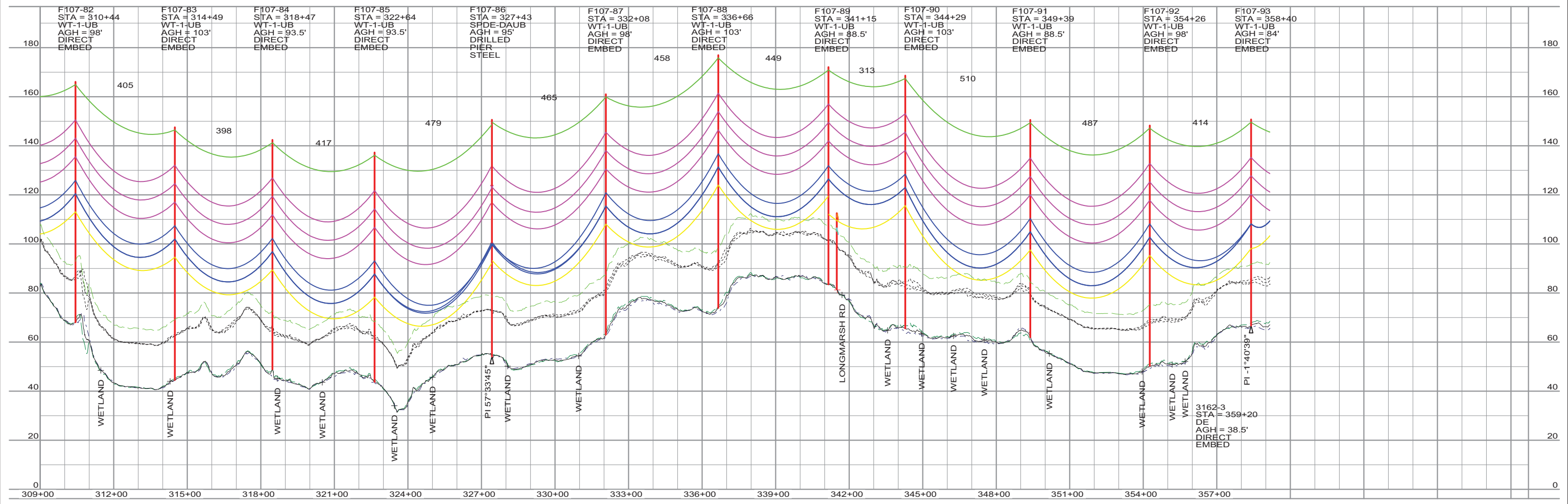
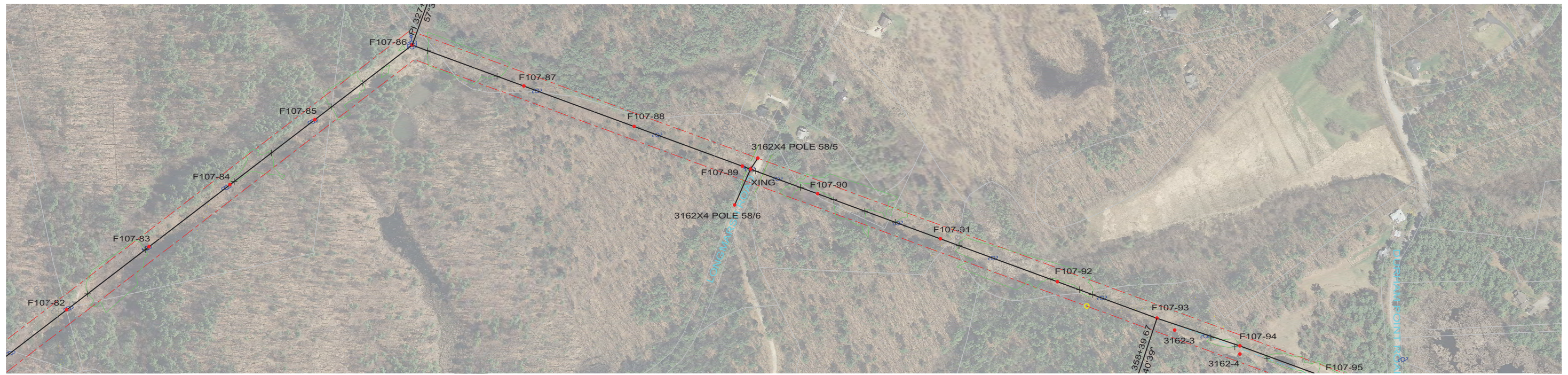
REV	REVISIONS	DATE	DRN	DSGN	CKD	APPD	REFERENCE DRAWINGS
L	RE-ISSUED FOR PERMITTING	1/21/2016	KMS	KMS	APJ		
K	RE-ISSUED FOR PERMITTING	12/23/2015	KMS	KMS	APJ		
J	RE-ISSUED FOR PERMITTING	11/13/2015	KMS	KMS	APJ		
I	ISSUED FOR REVIEW	8/21/2015	KMS	KMS	APJ		
H	ISSUED FOR REVIEW	7/24/2015	KMS	KMS	APJ		

DSGN	KMS	4/4/2014
DRN	KMS	4/4/2014
CKD	APJ	4/4/2014

SCALE: 1" = 200' HORIZ.
20' VERT.
FOR 22X34 DWG ONLY



PUBLIC SERVICE OF NEW HAMPSHIRE		JOB NUMBER	REV
SEACOAST RELIABILITY PROJECT		133005	△
F107 LINE & STRUCTURE LOCATIONS		DRAWING NUMBER	
		F10743006	

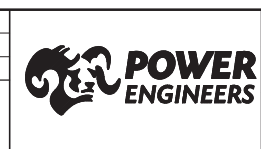


THIS DRAWING WAS PREPARED BY POWER ENGINEERS, INC. FOR A SPECIFIC PROJECT, TAKING INTO CONSIDERATION THE SPECIFIC AND UNIQUE REQUIREMENTS OF THE PROJECT. REUSE OF THIS DRAWING OR ANY INFORMATION CONTAINED IN THIS DRAWING FOR ANY PURPOSE IS PROHIBITED UNLESS WRITTEN PERMISSION FROM BOTH POWER AND POWERS CLIENT IS GRANTED.

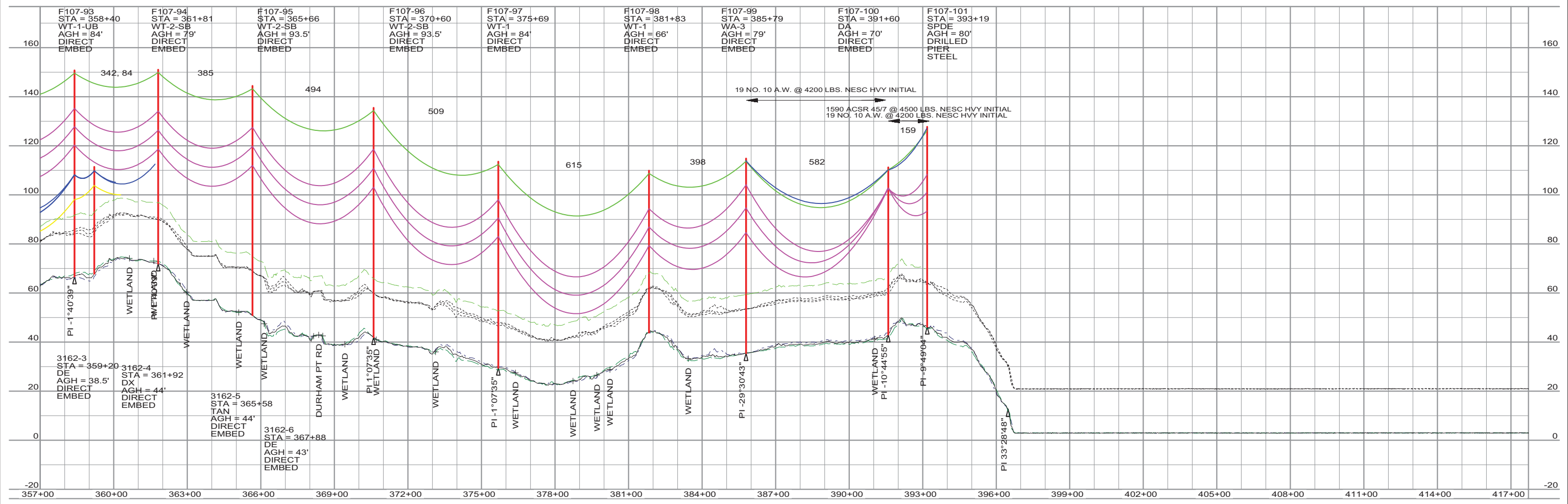
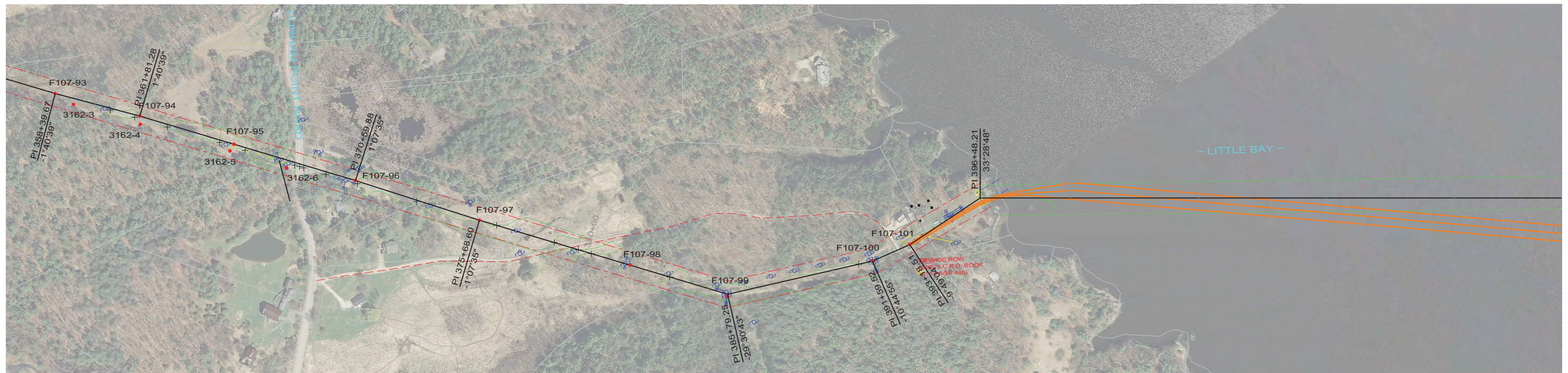
TYPICAL WIRE INFORMATION:
 0KV 24 FIBER OPGW INSTALLED @ 4,500 LBS. NESC HVY. INITIAL (DISPLAYED @ 120 DEG. F)
 115KV 1590 ACSR 45/7 INSTALLED @ 11,400 LBS. NESC HVY. INITIAL (DISPLAYED @ 285 DEG. F)
 34.5KV 477 ACSR 18/1 INSTALLED @ 3,500 LBS. NESC HVY. INITIAL (DISPLAYED @ 212 DEG. F)
 0KV 4/0 ACSR 6/1 INSTALLED @ 2,500 LBS. NESC HVY. INITIAL (DISPLAYED @ 120 DEG. F)
 0KV 19 NO. 10 AW @ 4,200 LBS. NESC HVY. INITIAL (DISPLAYED @ 120 DEG. F)
 HENDRIX MESSENGER & 477 KCMIL SPACER CABLE @ 9,000 LBS. NESC HVY. INITIAL (DISPLAYED @ 120 DEG. F)

REV	REVISIONS	DATE	DRN	DSGN	CKD	APPD	REFERENCE DRAWINGS
L	RE-ISSUED FOR PERMITTING	1/21/2016	KMS	KMS	APJ		
K	RE-ISSUED FOR PERMITTING	12/23/2015	KMS	KMS	APJ		
J	RE-ISSUED FOR PERMITTING	11/13/2015	KMS	KMS	APJ		
I	ISSUED FOR REVIEW	8/21/2015	KMS	KMS	APJ		
H	ISSUED FOR REVIEW	7/24/2015	KMS	KMS	APJ		

DSGN KMS 4/4/2014
 DRN KMS 4/4/2014
 CKD APJ 4/4/2014
 SCALE: 1" = 200' HORIZ.
 20' VERT.
 FOR 22X34 DWG ONLY



PUBLIC SERVICE OF NEW HAMPSHIRE		JOB NUMBER	REV
SEACOAST RELIABILITY PROJECT		133005	L
F107 LINE & STRUCTURE LOCATIONS		DRAWING NUMBER	
		F10743007	



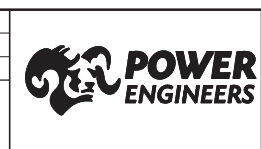
THIS DRAWING WAS PREPARED BY POWER ENGINEERS, INC. FOR A SPECIFIC PROJECT, TAKING INTO CONSIDERATION THE SPECIFIC AND UNIQUE REQUIREMENTS OF THE PROJECT. REUSE OF THIS DRAWING OR ANY INFORMATION CONTAINED IN THIS DRAWING FOR ANY PURPOSE IS PROHIBITED UNLESS WRITTEN PERMISSION FROM BOTH POWER AND POWERS CLIENT IS GRANTED.

TYPICAL WIRE INFORMATION:
 0KV 24 FIBER OPGW INSTALLED @ 4,500 LBS. NESC HVY. INITIAL (DISPLAYED @ 120 DEG. F)
 115KV 1590 ACSR 45/7 INSTALLED @ 11,400 LBS. NESC HVY. INITIAL (DISPLAYED @ 285 DEG. F)
 34.5KV 477 ACSR 18/1 INSTALLED @ 3,500 LBS. NESC HVY. INITIAL (DISPLAYED @ 212 DEG. F)
 0KV 4/0 ACSR 6/1 INSTALLED @ 2,500 LBS. NESC HVY. INITIAL (DISPLAYED @ 120 DEG. F)
 0KV 19 NO. 10 AW @ 4,200 LBS. NESC HVY. INITIAL (DISPLAYED @ 120 DEG. F)
 HENDRIX MESSENGER & 477 KCMIL SPACER CABLE @ 9,000 LBS. NESC HVY. INITIAL (DISPLAYED @ 120 DEG. F)

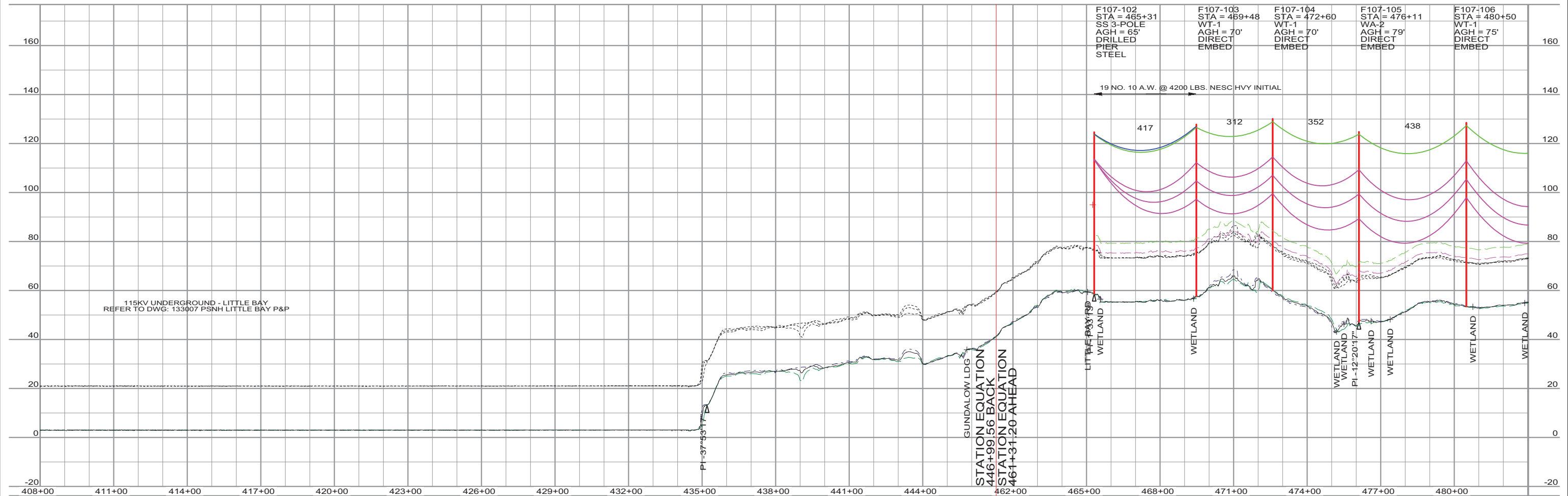
REV	REVISIONS	DATE	DRN	DSGN	CKD	APPD	REFERENCE DRAWINGS
L	RE-ISSUED FOR PERMITTING	1/21/2016	KMS	KMS	APJ		
K	RE-ISSUED FOR PERMITTING	12/23/2015	KMS	KMS	APJ		
J	RE-ISSUED FOR PERMITTING	11/13/2015	KMS	KMS	APJ		
I	ISSUED FOR REVIEW	8/21/2015	KMS	KMS	APJ		
H	ISSUED FOR REVIEW	7/24/2015	KMS	KMS	APJ		

DSGN	KMS	4/4/2014
DRN	KMS	4/4/2014
CKD	APJ	4/4/2014

SCALE: 1" = 200' HORIZ.
20' VERT.
FOR 22X34 DWG ONLY



PUBLIC SERVICE OF NEW HAMPSHIRE		JOB NUMBER	REV
SEACOAST RELIABILITY PROJECT		133005	L
F107 LINE & STRUCTURE LOCATIONS		DRAWING NUMBER	
		F10743008	



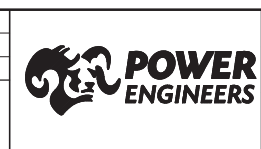
THIS DRAWING WAS PREPARED BY POWER ENGINEERS, INC. FOR A SPECIFIC PROJECT, TAKING INTO CONSIDERATION THE SPECIFIC AND UNIQUE REQUIREMENTS OF THE PROJECT. REUSE OF THIS DRAWING OR ANY INFORMATION CONTAINED IN THIS DRAWING FOR ANY PURPOSE IS PROHIBITED UNLESS WRITTEN PERMISSION FROM BOTH POWER AND POWERS CLIENT IS GRANTED.

TYPICAL WIRE INFORMATION:
 0KV 24 FIBER OPGW INSTALLED @ 4,500 LBS. NESC HVY. INITIAL (DISPLAYED @ 120 DEG. F)
 115KV 1590 ACSR 45/7 INSTALLED @ 11,400 LBS. NESC HVY. INITIAL (DISPLAYED @ 285 DEG. F)
 34.5KV 477 ACSR 18/1 INSTALLED @ 3,500 LBS. NESC HVY. INITIAL (DISPLAYED @ 212 DEG. F)
 0KV 4/0 ACSR 6/1 INSTALLED @ 2,500 LBS. NESC HVY. INITIAL (DISPLAYED @ 120 DEG. F)
 0KV 19 NO. 10 AW @ 4,200 LBS. NESC HVY. INITIAL (DISPLAYED @ 120 DEG. F)
 HENDRIX MESSENGER & 477 KCMIL SPACER CABLE @ 9,000 LBS. NESC HVY. INITIAL (DISPLAYED @ 120 DEG. F)

REV	REVISIONS	DATE	DRN	DSGN	CKD	APPD	REFERENCE DRAWINGS
K	RE-ISSUED FOR PERMITTING	12/23/2015	KMS	KMS	APJ		
J	RE-ISSUED FOR PERMITTING	11/13/2015	KMS	KMS	APJ		
I	ISSUED FOR REVIEW	8/21/2015	KMS	KMS	APJ		
H	ISSUED FOR REVIEW	7/24/2015	KMS	KMS	APJ		
G	RE-ISSUED FOR PERMITTING	4/24/2015	KMS	KMS	APJ		

DSGN	KMS	4/4/2014
DRN	KMS	4/4/2014
CKD	APJ	4/4/2014

SCALE: 1" = 200' HORIZ.
20' VERT.
FOR 22X34 DWG ONLY



PUBLIC SERVICE OF NEW HAMPSHIRE		JOB NUMBER	REV
SEACOAST RELIABILITY PROJECT		133005	K
F107 LINE & STRUCTURE LOCATIONS		DRAWING NUMBER	
		F10743009	