

THIS DRAWING WAS PREPARED BY POWER ENGINEERS, INC. FOR A SPECIFIC PROJECT, TAKING INTO CONSIDERATION THE SPECIFIC AND UNIQUE REQUIREMENTS OF THE PROJECT. REUSE OF THIS DRAWING OR ANY INFORMATION CONTAINED IN THIS DRAWING FOR ANY PURPOSE IS PROHIBITED UNLESS WRITTEN PERMISSION FROM BOTH POWER AND POWERS CLIENT IS GRANTED.

TYPICAL WIRE INFORMATION:
 0KV 24 FIBER OPGW INSTALLED @ 4,500 LBS. NESC HVY. INITIAL (DISPLAYED @ 120 DEG. F)
 115KV 1590 ACSR 45/7 INSTALLED @ 11,400 LBS. NESC HVY. INITIAL (DISPLAYED @ 285 DEG. F)
 34.5KV 477 ACSR 18/1 INSTALLED @ 3,500 LBS. NESC HVY. INITIAL (DISPLAYED @ 212 DEG. F)
 0KV 4/0 ACSR 6/1 INSTALLED @ 2,500 LBS. NESC HVY. INITIAL (DISPLAYED @ 120 DEG. F)
 0KV 19 NO. 10 AW @ 4,200 LBS. NESC HVY. INITIAL (DISPLAYED @ 120 DEG. F)
 HENDRIX MESSENGER & 477 KCMIL SPACER CABLE @ 9,000 LBS. NESC HVY. INITIAL (DISPLAYED @ 120 DEG. F)

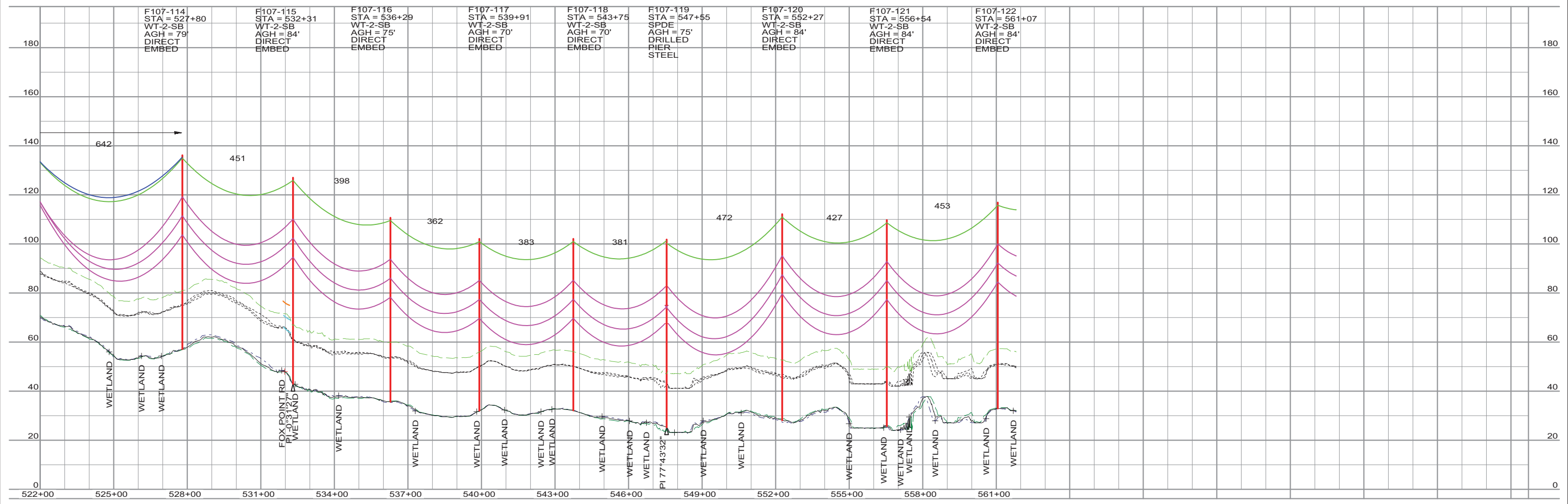
REV	REVISIONS	DATE	DRN	DSGN	CKD	APPD	REFERENCE DRAWINGS
L	RE-ISSUED FOR PERMITTING	1/21/2016	KMS	KMS	APJ		
K	RE-ISSUED FOR PERMITTING	12/23/2015	KMS	KMS	APJ		
J	RE-ISSUED FOR PERMITTING	11/13/2015	KMS	KMS	APJ		
I	ISSUED FOR REVIEW	8/21/2015	KMS	KMS	APJ		
H	ISSUED FOR REVIEW	7/24/2015	KMS	KMS	APJ		

DSGN	KMS	4/4/2014
DRN	KMS	4/4/2014
CKD	APJ	4/4/2014

SCALE: 1" = 200' HORIZ.
20' VERT.
FOR 22X34 DWG ONLY



PUBLIC SERVICE OF NEW HAMPSHIRE		JOB NUMBER	REV
SEACOAST RELIABILITY PROJECT		133005	△
F107 LINE & STRUCTURE LOCATIONS		DRAWING NUMBER	
		F10743010	



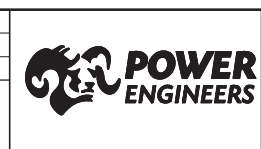
THIS DRAWING WAS PREPARED BY POWER ENGINEERS, INC. FOR A SPECIFIC PROJECT, TAKING INTO CONSIDERATION THE SPECIFIC AND UNIQUE REQUIREMENTS OF THE PROJECT. REUSE OF THIS DRAWING OR ANY INFORMATION CONTAINED IN THIS DRAWING FOR ANY PURPOSE IS PROHIBITED UNLESS WRITTEN PERMISSION FROM BOTH POWER AND POWERS CLIENT IS GRANTED.

TYPICAL WIRE INFORMATION:
 0KV 24 FIBER OPGW INSTALLED @ 4,500 LBS. NESC HVY. INITIAL (DISPLAYED @ 120 DEG. F)
 115KV 1590 ACSR 45/7 INSTALLED @ 11,400 LBS. NESC HVY. INITIAL (DISPLAYED @ 285 DEG. F)
 34.5KV 477 ACSR 18/1 INSTALLED @ 3,500 LBS. NESC HVY. INITIAL (DISPLAYED @ 212 DEG. F)
 0KV 4/0 ACSR 6/1 INSTALLED @ 2,500 LBS. NESC HVY. INITIAL (DISPLAYED @ 120 DEG. F)
 0KV 19 NO. 10 AW @ 4,200 LBS. NESC HVY. INITIAL (DISPLAYED @ 120 DEG. F)
 HENDRIX MESSENGER & 477 KCMIL SPACER CABLE @ 9,000 LBS. NESC HVY. INITIAL (DISPLAYED @ 120 DEG. F)

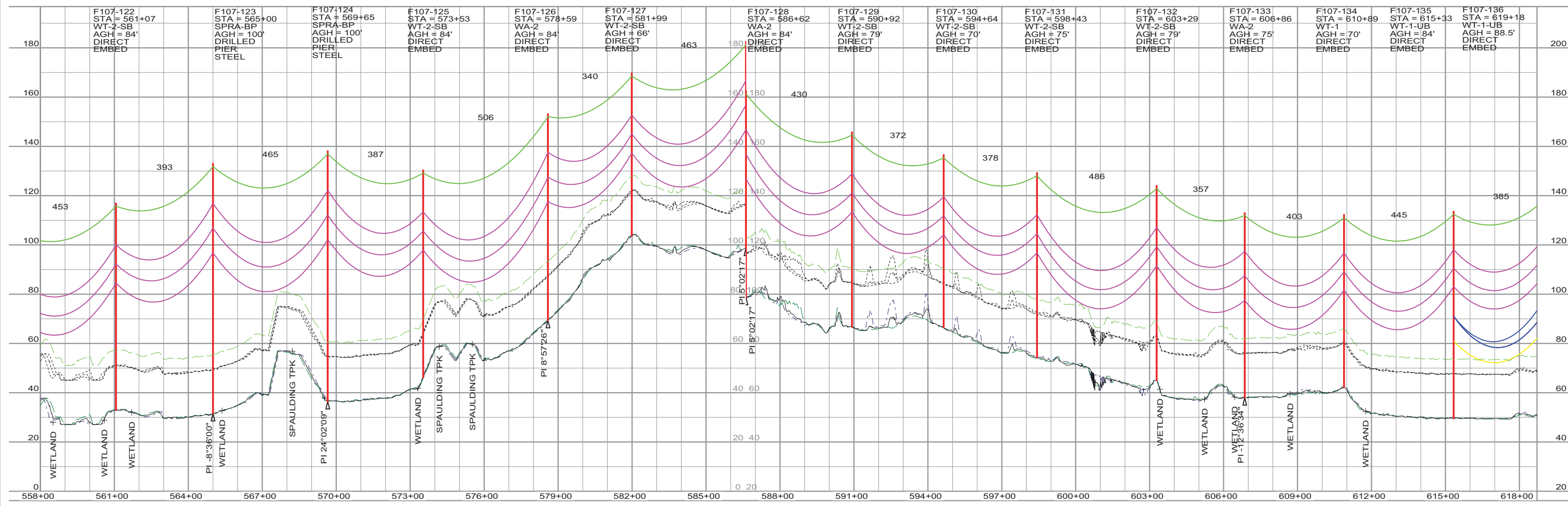
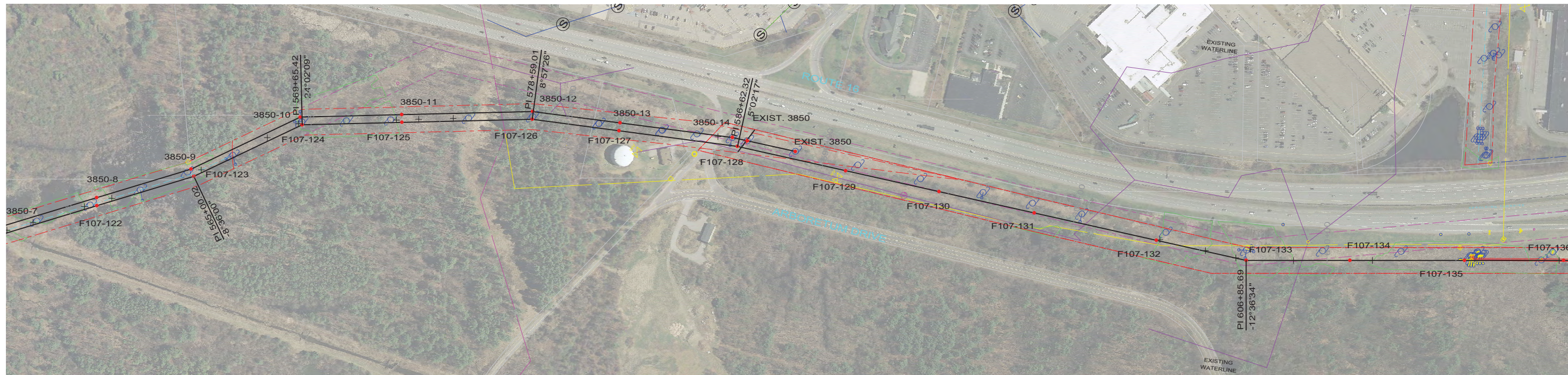
REV	REVISIONS	DATE	DRN	DSGN	CKD	APPD	REFERENCE DRAWINGS
L	RE-ISSUED FOR PERMITTING	1/21/2016	KMS	KMS	APJ		
K	RE-ISSUED FOR PERMITTING	12/23/2015	KMS	KMS	APJ		
J	RE-ISSUED FOR PERMITTING	11/13/2015	KMS	KMS	APJ		
I	ISSUED FOR REVIEW	8/21/2015	KMS	KMS	APJ		
H	ISSUED FOR REVIEW	7/24/2015	KMS	KMS	APJ		

DSGN	KMS	4/4/2014
DRN	KMS	4/4/2014
CKD	APJ	4/4/2014

SCALE: 1" = 200' HORIZ.
20' VERT.
FOR 22X34 DWG ONLY



PUBLIC SERVICE OF NEW HAMPSHIRE		JOB NUMBER	REV
SEACOAST RELIABILITY PROJECT		133005	L
F107 LINE & STRUCTURE LOCATIONS		DRAWING NUMBER	
		F10743011	



THIS DRAWING WAS PREPARED BY POWER ENGINEERS, INC. FOR A SPECIFIC PROJECT, TAKING INTO CONSIDERATION THE SPECIFIC AND UNIQUE REQUIREMENTS OF THE PROJECT. REUSE OF THIS DRAWING OR ANY INFORMATION CONTAINED IN THIS DRAWING FOR ANY PURPOSE IS PROHIBITED UNLESS WRITTEN PERMISSION FROM BOTH POWER AND POWERS CLIENT IS GRANTED.

TYPICAL WIRE INFORMATION:
 0KV 24 FIBER OPGW INSTALLED @ 4,500 LBS. NESC HVY. INITIAL (DISPLAYED @ 120 DEG. F)
 115KV 1590 ACSR 45/7 INSTALLED @ 11,400 LBS. NESC HVY. INITIAL (DISPLAYED @ 285 DEG. F)
 34.5KV 477 ACSR 18/1 INSTALLED @ 3,500 LBS. NESC HVY. INITIAL (DISPLAYED @ 212 DEG. F)
 0KV 4/0 ACSR 6/1 INSTALLED @ 2,500 LBS. NESC HVY. INITIAL (DISPLAYED @ 120 DEG. F)
 0KV 19 NO. 10 AW @ 4,200 LBS. NESC HVY. INITIAL (DISPLAYED @ 120 DEG. F)
 HENDRIX MESSENGER & 477 KCMIL SPACER CABLE @ 9,000 LBS. NESC HVY. INITIAL (DISPLAYED @ 120 DEG. F)

REV	REVISIONS	DATE	DRN	DSGN	CKD	APPD	REFERENCE DRAWINGS
L	RE-ISSUED FOR PERMITTING	1/21/2016	KMS	KMS	APJ		
K	RE-ISSUED FOR PERMITTING	12/23/2015	KMS	KMS	APJ		
J	RE-ISSUED FOR PERMITTING	11/13/2015	KMS	KMS	APJ		
I	ISSUED FOR REVIEW	8/21/2015	KMS	KMS	APJ		
H	ISSUED FOR REVIEW	7/24/2015	KMS	KMS	APJ		

DSGN	KMS	4/4/2014
DRN	KMS	4/4/2014
CKD	APJ	4/4/2014

SCALE: 1" = 200' HORIZ.
20' VERT.
FOR 22X34 DWG ONLY

PUBLIC SERVICE OF NEW HAMPSHIRE

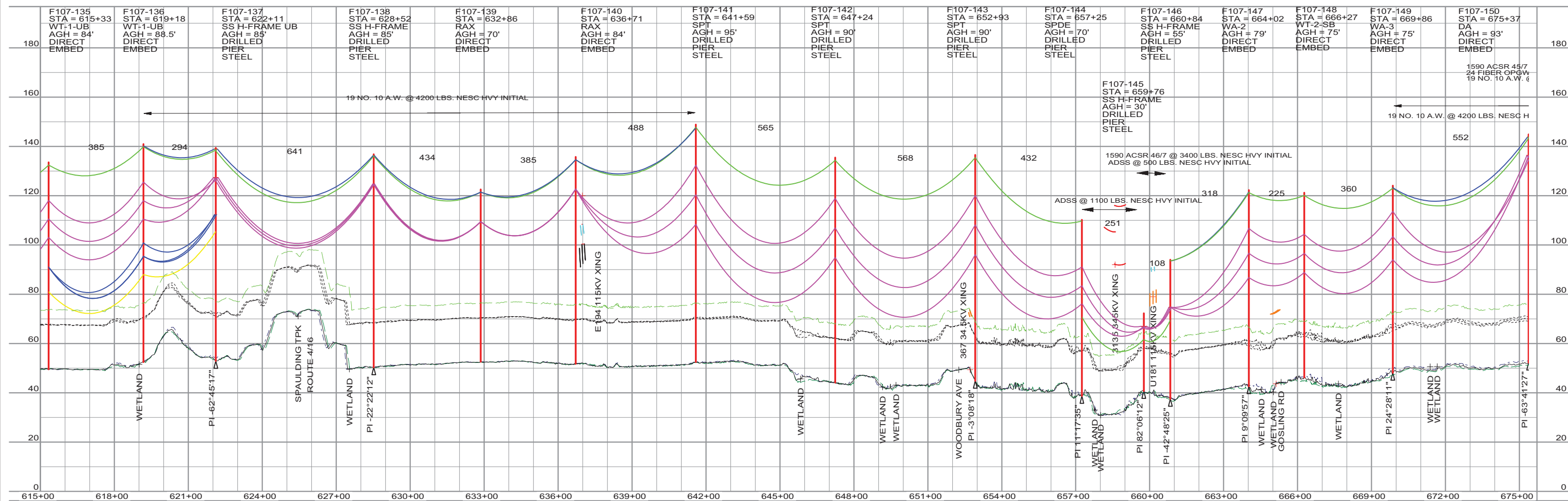
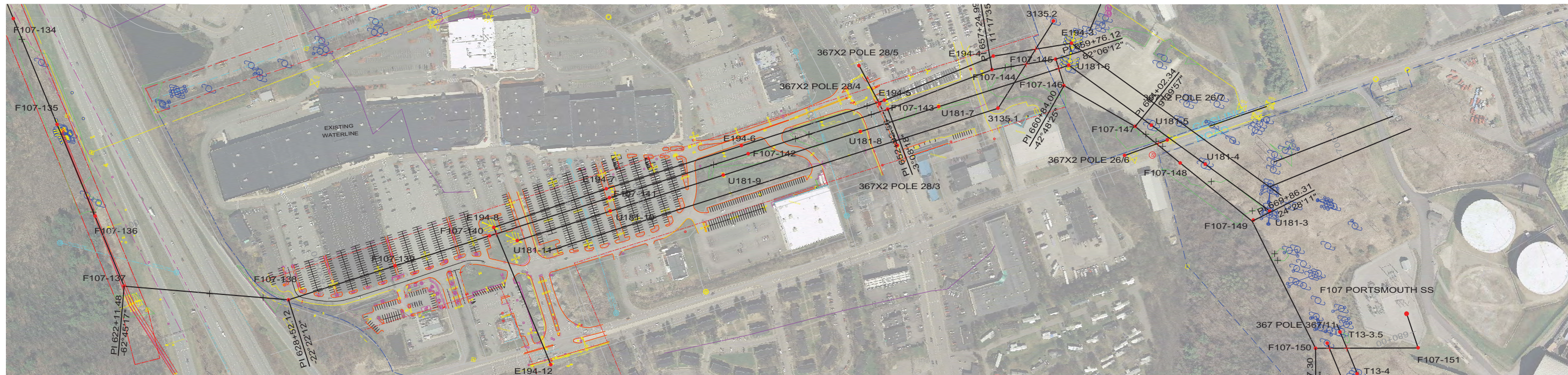
SEACOAST RELIABILITY PROJECT

F107 LINE & STRUCTURE LOCATIONS

JOB NUMBER
133005

DRAWING NUMBER
F10743012

REV
L



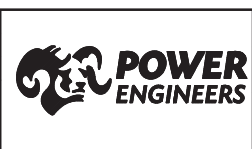
THIS DRAWING WAS PREPARED BY POWER ENGINEERS, INC. FOR A SPECIFIC PROJECT, TAKING INTO CONSIDERATION THE SPECIFIC AND UNIQUE REQUIREMENTS OF THE PROJECT. REUSE OF THIS DRAWING OR ANY INFORMATION CONTAINED IN THIS DRAWING FOR ANY PURPOSE IS PROHIBITED UNLESS WRITTEN PERMISSION FROM BOTH POWER AND POWERS CLIENT IS GRANTED.

TYPICAL WIRE INFORMATION:
 0KV 24 FIBER OPGW INSTALLED @ 4,500 LBS. NESC HVY. INITIAL (DISPLAYED @ 120 DEG. F)
 115KV 1590 ACSR 45/7 INSTALLED @ 11,400 LBS. NESC HVY. INITIAL (DISPLAYED @ 285 DEG. F)
 34.5KV 477 ACSR 18/1 INSTALLED @ 3,500 LBS. NESC HVY. INITIAL (DISPLAYED @ 212 DEG. F)
 0KV 4/0 ACSR 6/1 INSTALLED @ 2,500 LBS. NESC HVY. INITIAL (DISPLAYED @ 120 DEG. F)
 0KV 19 NO. 10 AW @ 4,200 LBS. NESC HVY. INITIAL (DISPLAYED @ 120 DEG. F)
 HENDRIX MESSENGER & 477 KCMIL SPACER CABLE @ 9,000 LBS. NESC HVY. INITIAL (DISPLAYED @ 120 DEG. F)

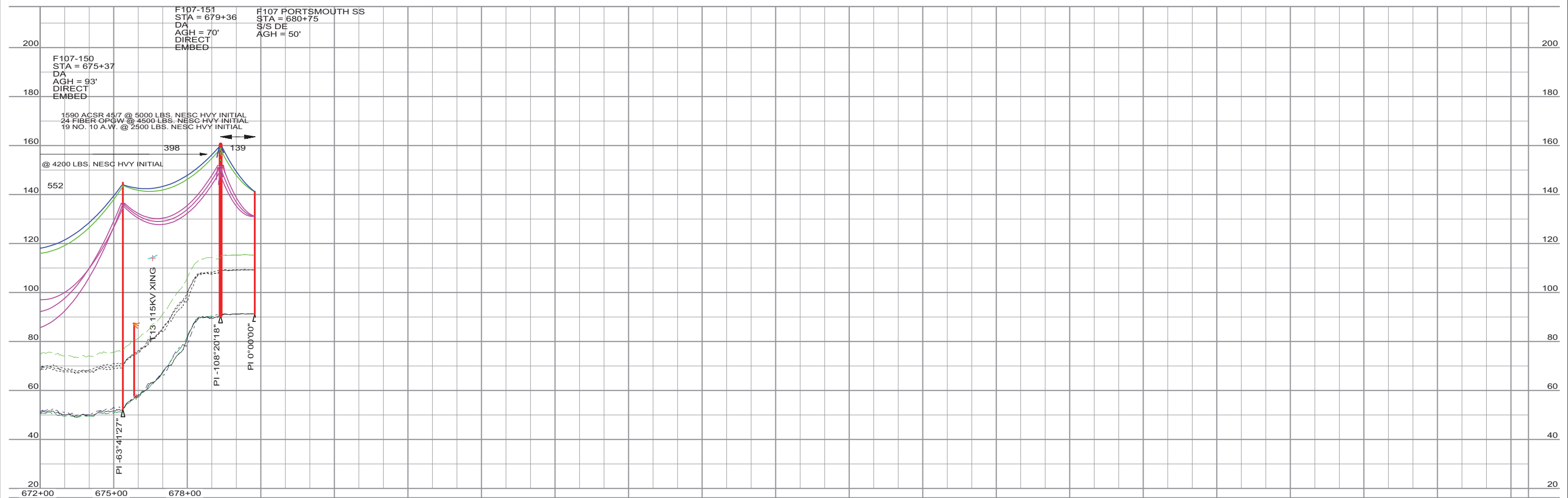
REV	REVISIONS	DATE	DRN	DSGN	CKD	APPD	REFERENCE DRAWINGS
L	RE-ISSUED FOR PERMITTING	1/21/2016	KMS	KMS	APJ		
K	RE-ISSUED FOR PERMITTING	12/23/2015	KMS	KMS	APJ		
J	RE-ISSUED FOR PERMITTING	11/13/2015	KMS	KMS	APJ		
I	ISSUED FOR REVIEW	8/21/2015	KMS	KMS	APJ		
H	ISSUED FOR REVIEW	7/24/2015	KMS	KMS	APJ		

DSGN	KMS	4/4/2014
DRN	KMS	4/4/2014
CKD	APJ	4/4/2014

SCALE: 1" = 200' HORIZ.
20' VERT.
FOR 22X34 DWG ONLY



PUBLIC SERVICE OF NEW HAMPSHIRE		JOB NUMBER	REV
SEACOAST RELIABILITY PROJECT		133005	△
F107 LINE & STRUCTURE LOCATIONS		DRAWING NUMBER	F10743013



THIS DRAWING WAS PREPARED BY POWER ENGINEERS, INC. FOR A SPECIFIC PROJECT, TAKING INTO CONSIDERATION THE SPECIFIC AND UNIQUE REQUIREMENTS OF THE PROJECT. REUSE OF THIS DRAWING OR ANY INFORMATION CONTAINED IN THIS DRAWING FOR ANY PURPOSE IS PROHIBITED UNLESS WRITTEN PERMISSION FROM BOTH POWER AND POWERS CLIENT IS GRANTED.

TYPICAL WIRE INFORMATION:
 0KV 24 FIBER OPGW INSTALLED @ 4,500 LBS. NESC HVY. INITIAL (DISPLAYED @ 120 DEG. F)
 115KV 1590 ACSR 45/7 INSTALLED @ 11,400 LBS. NESC HVY. INITIAL (DISPLAYED @ 285 DEG. F)
 34.5KV 477 ACSR 18/1 INSTALLED @ 3,500 LBS. NESC HVY. INITIAL (DISPLAYED @ 212 DEG. F)
 0KV 4/0 ACSR 6/1 INSTALLED @ 2,500 LBS. NESC HVY. INITIAL (DISPLAYED @ 120 DEG. F)
 0KV 19 NO. 10 AW @ 4,200 LBS. NESC HVY. INITIAL (DISPLAYED @ 120 DEG. F)
 HENDRIX MESSENGER & 477 KCMIL SPACER CABLE @ 9,000 LBS. NESC HVY. INITIAL (DISPLAYED @ 120 DEG. F)

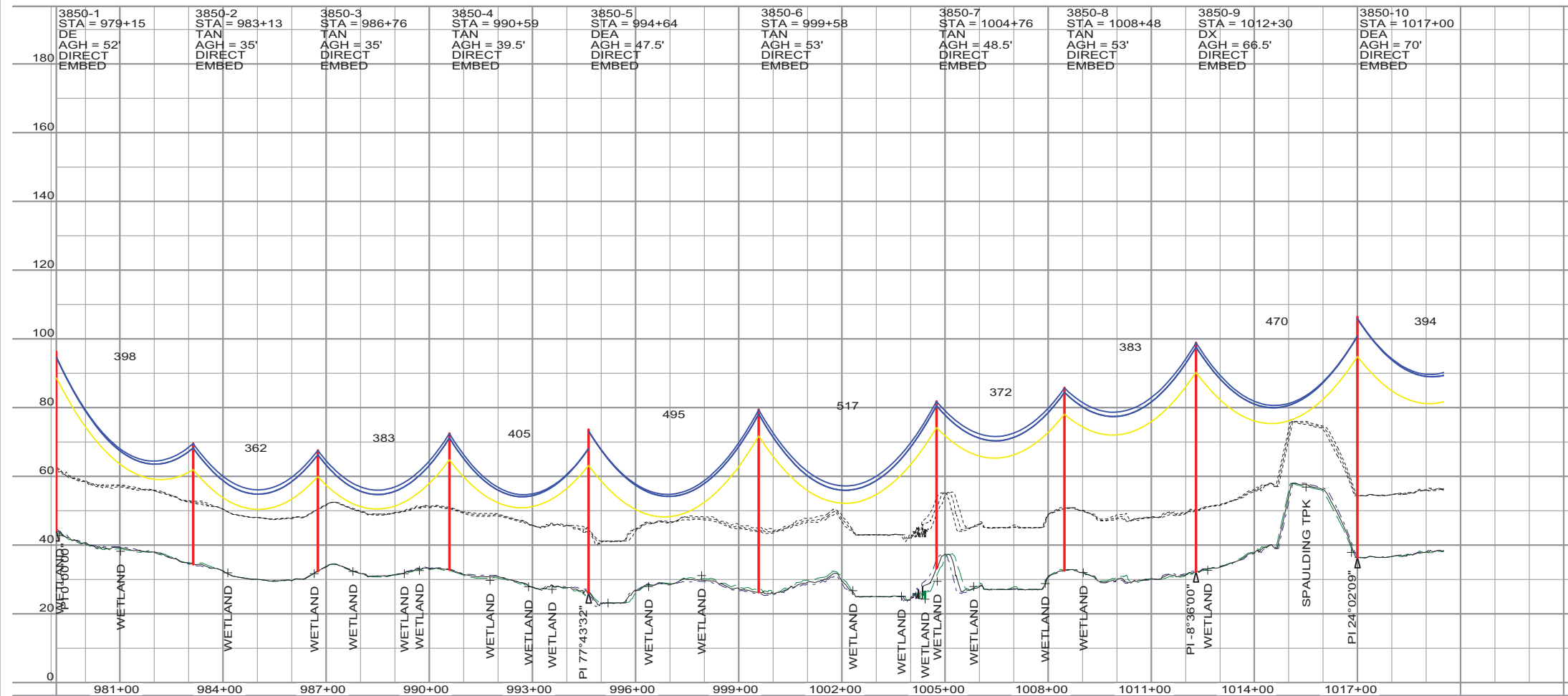
REV	REVISIONS	DATE	DRN	DSGN	CKD	APPD	REFERENCE DRAWINGS
L	RE-ISSUED FOR PERMITTING	1/21/2016	KMS	KMS	APJ		
K	RE-ISSUED FOR PERMITTING	12/23/2015	KMS	KMS	APJ		
J	RE-ISSUED FOR PERMITTING	11/13/2015	KMS	KMS	APJ		
I	ISSUED FOR REVIEW	8/21/2015	KMS	KMS	APJ		
H	ISSUED FOR REVIEW	7/24/2015	KMS	KMS	APJ		

DSGN	KMS	4/4/2014
DRN	KMS	4/4/2014
CKD	APJ	4/4/2014

SCALE: 1" = 200' HORIZ.
20' VERT.
FOR 22X34 DWG ONLY



PUBLIC SERVICE OF NEW HAMPSHIRE		JOB NUMBER	REV
SEACOAST RELIABILITY PROJECT		133005	L
F107 LINE & STRUCTURE LOCATIONS		DRAWING NUMBER	
		F10743014	



NOTES:

- 1) PROPERTY BOUNDARIES SHOWN ARE APPROXIMATE AND FOR REPRESENTATION ONLY. RIGHT OF WAY LOCATION HAS BEEN SURVEYED AND PROVIDED BY DOUCET SURVEY, INC.
- 2) DISTRIBUTION UPGRADES TO STRUCTURES AND EQUIPMENT ARE NOT DETAILED IN THIS DRAWING SET. DETAILED ANALYSIS AND INSTALLATION OF EQUIPMENT, OR MODIFICATIONS TO EXISTING STRUCTURES, WILL BE PERFORMED BY OTHERS.

LEGEND

UNDERGROUND UTILITIES:

- DURHAM WATER LINE
- SEWER LINE
- UNH WATER LINE
- FIBER OPTIC
- WATER LINE
- GAS LINE
- GAS LINE

CONDUCTOR/SHIELD WIRES:

- 34.5KV 477 ACSR 18/1 "PELICAN"
- 0KV 4/0 AWG ACSR 6/1 "PENGUIN"

THIS DRAWING WAS PREPARED BY POWER ENGINEERS, INC. FOR A SPECIFIC PROJECT, TAKING INTO CONSIDERATION THE SPECIFIC AND UNIQUE REQUIREMENTS OF THE PROJECT. REUSE OF THIS DRAWING OR ANY INFORMATION CONTAINED IN THIS DRAWING FOR ANY PURPOSE IS PROHIBITED UNLESS WRITTEN PERMISSION FROM BOTH POWER AND POWERS CLIENT IS GRANTED.

TYPICAL WIRE INFORMATION:

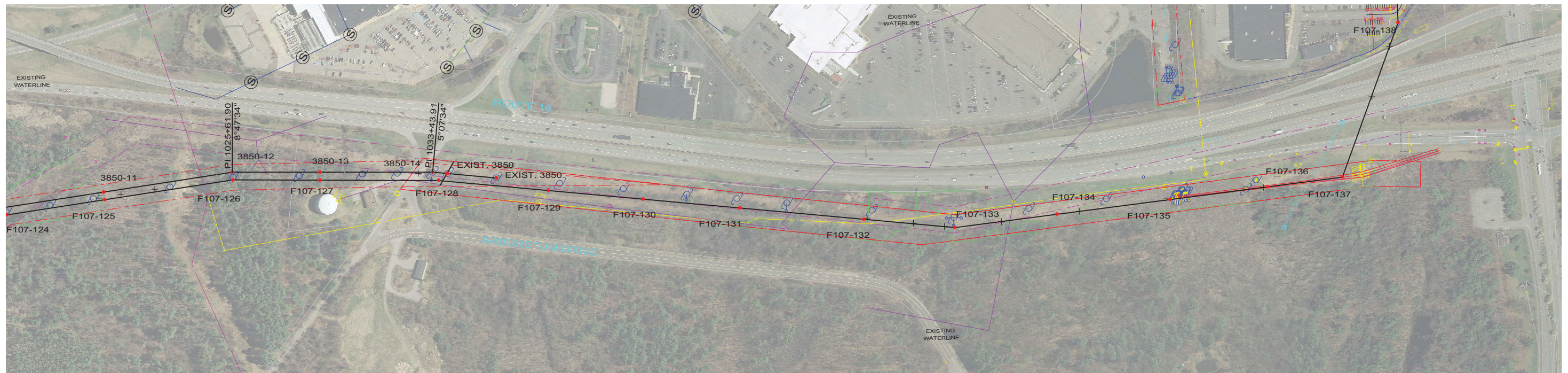
34.5KV 477 ACSR 18/1 INSTALLED @ 3,500 LBS. NESC HVY. INITIAL (DISPLAYED @ 212 DEG. F)
0KV 4/0 ACSR 6/1 INSTALLED @ 2,500 LBS. NESC HVY. INITIAL (DISPLAYED @ 120 DEG. F)

REV	REVISIONS	DATE	DRN	DSGN	CKD	APPD	REFERENCE DRAWINGS
B	ISSUED FOR PERMITTING	11/16/2015	KMS	KMS	APJ		
A	ISSUED FOR REVIEW	8/21/2015	KMS	KMS	APJ		

DSGN	KMS	4/4/2014
DRN	KMS	4/4/2014
CKD	APJ	4/4/2014
SCALE: 1" = 200' HORIZ. 20' VERT.		
FOR 22X34 DWG ONLY		

POWER ENGINEERS

PUBLIC SERVICE OF NEW HAMPSHIRE	JOB NUMBER	REV
SEACOAST RELIABILITY PROJECT	133005	B
3850 LINE & STRUCTURE LOCATIONS	DRAWING NUMBER	
	385044001	



THIS DRAWING WAS PREPARED BY POWER ENGINEERS, INC. FOR A SPECIFIC PROJECT, TAKING INTO CONSIDERATION THE SPECIFIC AND UNIQUE REQUIREMENTS OF THE PROJECT. REUSE OF THIS DRAWING OR ANY INFORMATION CONTAINED IN THIS DRAWING FOR ANY PURPOSE IS PROHIBITED UNLESS WRITTEN PERMISSION FROM BOTH POWER AND POWERS CLIENT IS GRANTED.

TYPICAL WIRE INFORMATION:

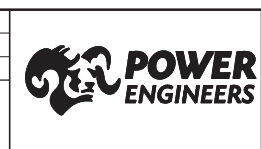
34.5KV 477 ACSR 18/1 INSTALLED @ 3,500 LBS. NESC HVY. INITIAL (DISPLAYED @ 212 DEG. F)
0KV 4/0 ACSR 6/1 INSTALLED @ 2,500 LBS. NESC HVY. INITIAL (DISPLAYED @ 120 DEG. F)

REV	REVISIONS	DATE	DRN	DSGN	CKD	APPD	REFERENCE DRAWINGS
C	RE-ISSUED FOR PERMITTING	1/21/2016	KMS	KMS	APJ		
B	ISSUED FOR PERMITTING	11/16/2015	KMS	KMS	APJ		
A	ISSUED FOR REVIEW	8/21/2015	KMS	KMS	APJ		

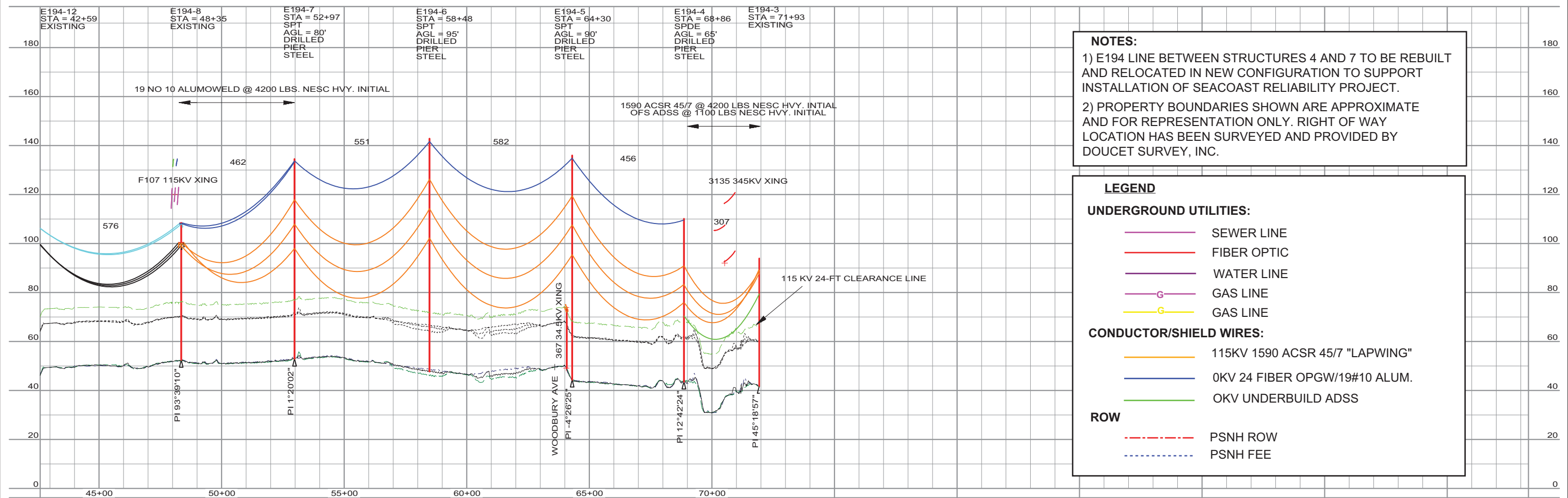
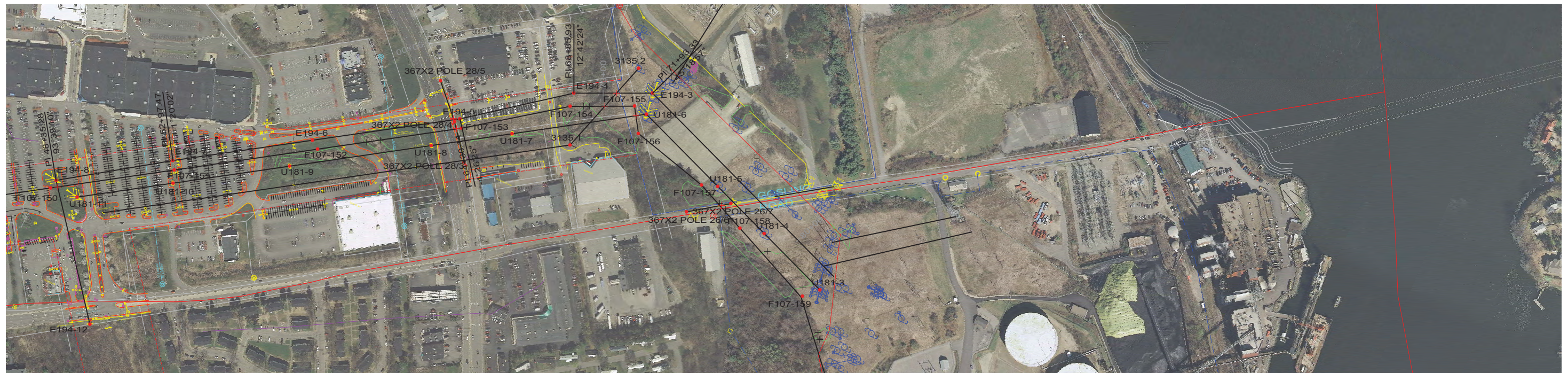
DSGN	KMS	4/4/2014
DRN	KMS	4/4/2014
CKD	APJ	4/4/2014

SCALE: 1" = 200' HORIZ.
20' VERT.

FOR 22X34 DWG ONLY



PUBLIC SERVICE OF NEW HAMPSHIRE	JOB NUMBER	REV
SEACOAST RELIABILITY PROJECT	133005	△
3850 LINE & STRUCTURE LOCATIONS	DRAWING NUMBER	
	385044002	



NOTES:

- 1) E194 LINE BETWEEN STRUCTURES 4 AND 7 TO BE REBUILT AND RELOCATED IN NEW CONFIGURATION TO SUPPORT INSTALLATION OF SEACOAST RELIABILITY PROJECT.
- 2) PROPERTY BOUNDARIES SHOWN ARE APPROXIMATE AND FOR REPRESENTATION ONLY. RIGHT OF WAY LOCATION HAS BEEN SURVEYED AND PROVIDED BY DOUCET SURVEY, INC.

LEGEND

UNDERGROUND UTILITIES:

- SEWER LINE
- FIBER OPTIC
- WATER LINE
- GAS LINE
- GAS LINE

CONDUCTOR/SHIELD WIRES:

- 115KV 1590 ACSR 45/7 "LAPWING"
- 0KV 24 FIBER OPGW/19#10 ALUM.
- 0KV UNDERBUILD ADSS

ROW

- PSNH ROW
- PSNH FEE

THIS DRAWING WAS PREPARED BY POWER ENGINEERS, INC. FOR A SPECIFIC PROJECT, TAKING INTO CONSIDERATION THE SPECIFIC AND UNIQUE REQUIREMENTS OF THE PROJECT. REUSE OF THIS DRAWING OR ANY INFORMATION CONTAINED IN THIS DRAWING FOR ANY PURPOSE IS PROHIBITED UNLESS WRITTEN PERMISSION FROM BOTH POWER AND POWERS CLIENT IS GRANTED.

TYPICAL WIRE INFORMATION:

0KV 24 FIBER OPGW INSTALLED @ 4,500 LBS. NESC HVY. INITIAL (DISPLAYED @ 120 DEG. F)

115KV 1590 ACSR 45/7 INSTALLED @ 11,400 LBS. NESC HVY. INITIAL (DISPLAYED @ 285 DEG. F)

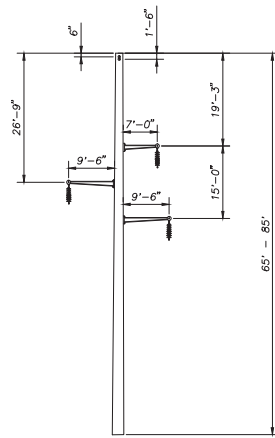
REV	REVISIONS	DATE	DRN	DSGN	CKD	APPD
C	ISSUED FOR PERMITTING	4/10/2015	KMS	KMS	APJ	
B	ISSUED FOR REVIEW	3/19/2015	KMS	KMS	APJ	
A	E194 STRUCTURE LOCATIONS	2/27/2015	KMS	KMS	APJ	

DSGN	KMS	4/4/2014				
DRN	KMS	4/4/2014				
CKD	APJ	4/4/2014				
SCALE: 1" = 200' HORIZ. 20' VERT.						
FOR 22X34 DWG ONLY						

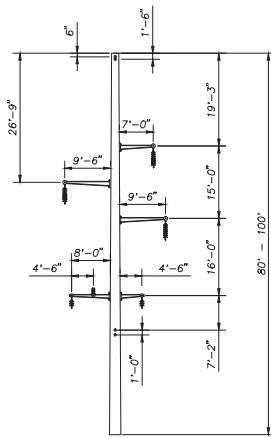
DSGN	KMS	4/4/2014
DRN	KMS	4/4/2014
CKD	APJ	4/4/2014



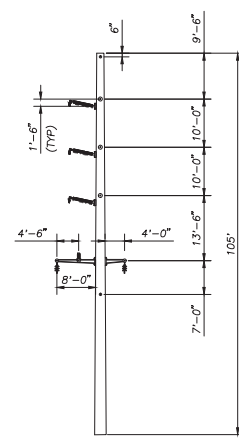
PUBLIC SERVICE OF NEW HAMPSHIRE		JOB NUMBER	REV
SEACOAST RELIABILITY PROJECT		133005	C
E194 LINE & STRUCTURE LOCATIONS		DRAWING NUMBER	1 OF 1



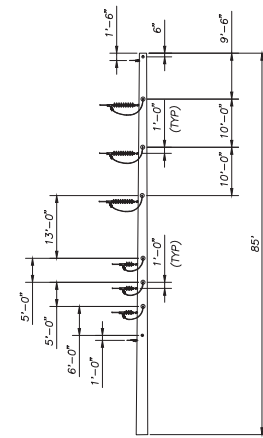
TYPE SPDE
 SELF SUPPORTING STEEL
 DEADEND
 115 KV
 DRILLED PIER FOUNDATION



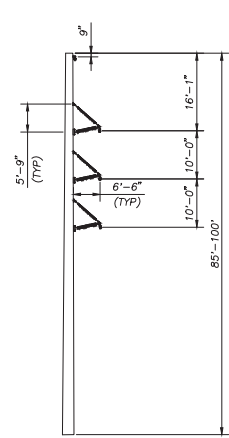
TYPE SPDE-DAUB
 SELF SUPPORTING STEEL
 DEADEND
 115 KV WITH 34.5 KV UNDERBUILD
 DRILLED PIER FOUNDATION



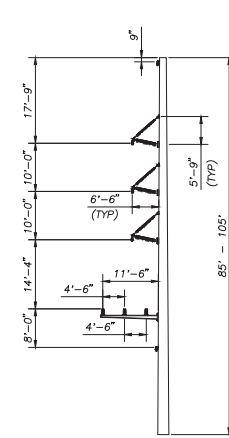
TYPE SPDE-2-UBDA
 SELF SUPPORTING STEEL
 DEADEND
 115 KV WITH 34.5 KV UNDERBUILD
 DRILLED PIER FOUNDATION



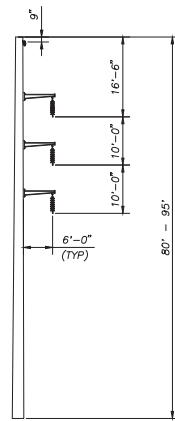
TYPE SPDE-VUB
 SELF SUPPORTING STEEL
 DEADEND
 115 KV WITH 34.5 KV UNDERBUILD
 DRILLED PIER FOUNDATION



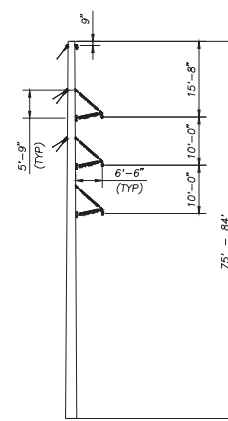
TYPE SPRA-BP
 SELF SUPPORTING STEEL
 2' - 12' ANGLE
 115 KV
 DRILLED PIER FOUNDATION



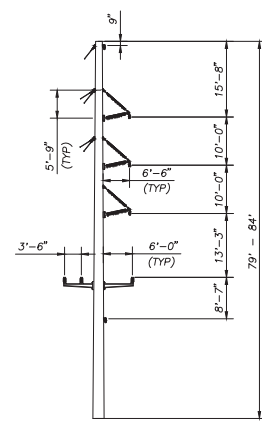
TYPE SPT-BP-UB
 SELF SUPPORTING STEEL
 0' - 10' BRACED POST TANGENT/ANGLE
 115 KV WITH 34.5 KV UNDERBUILD
 DRILLED PIER FOUNDATION



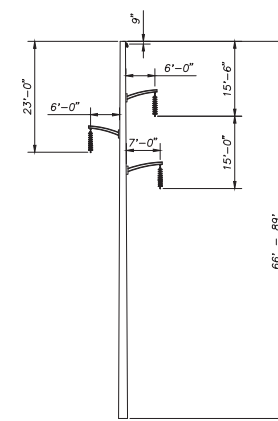
TYPE SPT
 SELF SUPPORTING STEEL
 TANGENT
 115 KV
 DRILLED PIER FOUNDATION



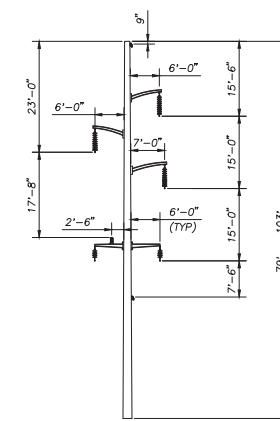
TYPE WA-2
 LAMINATED WOOD OR
 STEEL GUYED SINGLE POLE
 2' - 12' ANGLE
 115 KV
 DIRECT EMBED FOUNDATION



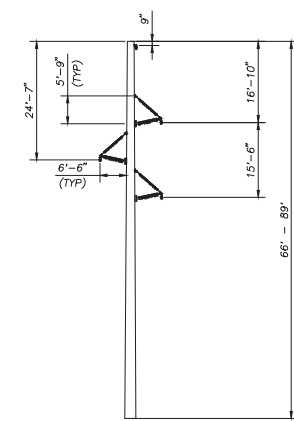
TYPE WA-2-UB
 LAMINATED WOOD OR
 STEEL GUYED SINGLE POLE
 2' - 12' ANGLE
 115 KV WITH 34.5 KV UNDERBUILD
 DIRECT EMBED FOUNDATION



TYPE WT-1
 LAMINATED WOOD OR STEEL SINGLE POLE
 TANGENT
 115 KV
 DIRECT EMBED FOUNDATION



TYPE WT-1-UB
 LAMINATED WOOD OR STEEL SINGLE POLE
 TANGENT
 115 KV WITH 34.5 KV UNDERBUILD
 DIRECT EMBED FOUNDATION



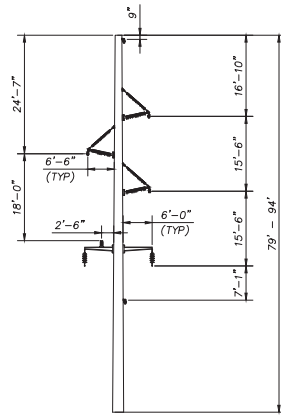
TYPE WT-2-SB
 LAMINATED WOOD OR STEEL SINGLE POLE
 BRACED POST TANGENT
 115 KV
 DIRECT EMBED FOUNDATION

NOTE:
 STRUCTURE GEOMETRIES SUBJECT TO
 CHANGE WITH DETAILED ENGINEERING.

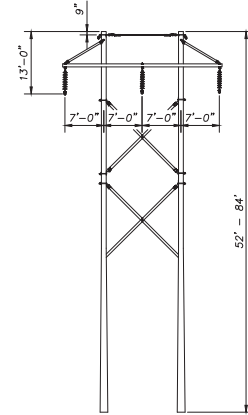
PRELIMINARY

CONTRACT SERVICES	REV	DESCRIPTION	ENG/PE#	DATE	DRN	CHKD	APPR	
D		ISSUED FOR REVIEW		7/31/15	SCF	KMS		
C		RE-ISSUED FOR PERMITTING		4/10/15	SCF	KMS		
B		ISSUED FOR PERMITTING		3/13/15	SCF	KMS		
A		ISSUED FOR REVIEW		9/9/14	SCF	KMS		
DWG REV		EPN/DESCRIPTION		CONT/PE#	DATE	DRN	CHKD	APPR

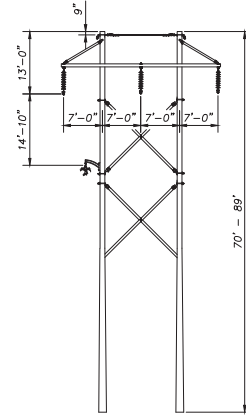
<p>Public Service of New Hampshire A Northeast Utilities Company</p>		T	D
		DRAWN SCF	ENGINEER KMS
TYPE 115 KV STANDARD SECTION F107 STRUCTURE INDEX		CHECKED APJ	APPROVED
		DATE 9/2/14	DRAWING NO. F10705SK03
SCALE NTS	FILE: F10705SK03.DWG	DRAWING NO. F10705SK03	



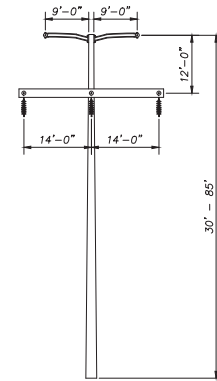
TYPE WT-2-UB-SB
 LAMINATED WOOD OR STEEL SINGLE POLE
 BRACED POST TANGENT
 115 KV WITH 34.5 KV UNDERBUILD
 DIRECT EMBED FOUNDATION



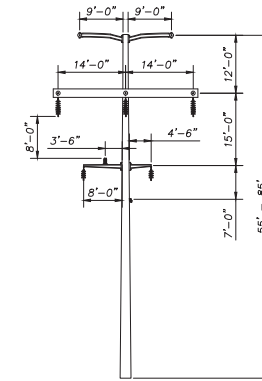
TYPE RAX
 ROUNDWOOD H-FRAME
 TANGENT
 115 KV
 DIRECT EMBED FOUNDATION



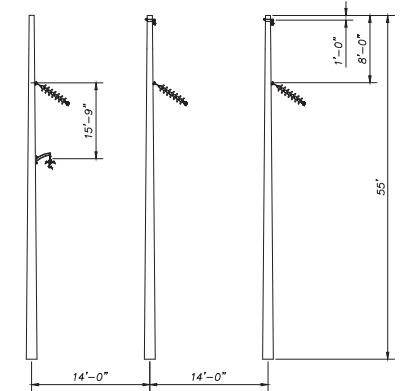
TYPE RAX-UB
 LAMINATED WOOD H-FRAME
 TANGENT
 115 KV W/ 34.5 KV UB
 DIRECT EMBED FOUNDATION



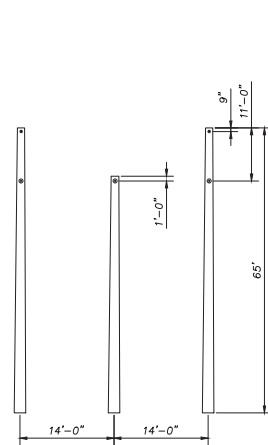
TYPE SS-H-FRAME
 SELF SUPPORTING STEEL
 DEADEND
 115 KV
 DRILLED PIER FOUNDATION
 NOTE: 16' CONDUCTOR
 DAVIT ARMS & 11' SW
 DAVIT ARMS FOR LINE
 ANGLES > 50°



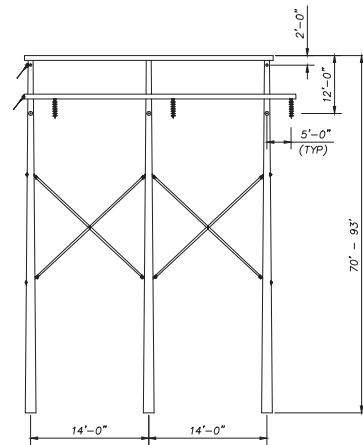
TYPE SS-H-FRAME-UB
 SELF SUPPORTING STEEL
 DEADEND
 115 KV WITH 34.5 KV UNDERBUILD
 DRILLED PIER FOUNDATION
 NOTE: 16' CONDUCTOR
 DAVIT ARMS & 11' SW
 DAVIT ARMS FOR LINE
 ANGLES > 50°



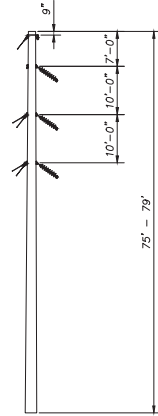
TYPE C-UB
 STEEL H-FRAME
 12° - 50° ANGLE
 115 KV W/ 34.5 KV UB
 DRILLED PIER FOUNDATION



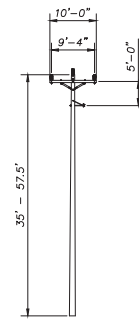
TYPE SS 3-POLE
 SELF SUPPORTING STEEL
 DEADEND
 115 KV
 DRILLED PIER FOUNDATION



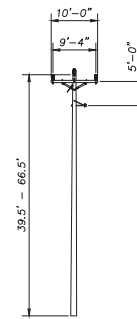
TYPE DA
 ROUNDWOOD 3 POLE
 DEADEND
 115 KV
 DIRECT EMBED FOUNDATION



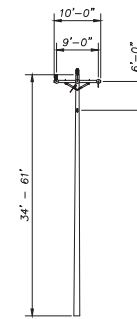
TYPE WA-3
 LAMINATED WOOD OR STEEL GUYED
 SINGLE POLE
 20° - 30° ANGLE
 115 KV
 DIRECT EMBED FOUNDATION



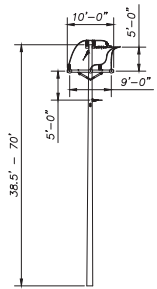
TYPE TAN
 ROUNDWOOD SINGLE POLE
 TANGENT
 34.5 KV
 DIRECT EMBED FOUNDATION



TYPE DX
 ROUNDWOOD SINGLE POLE
 0° - 12° ANGLE
 34.5 KV
 DIRECT EMBED FOUNDATION



TYPE DE
 ROUNDWOOD SINGLE POLE
 0° - 15° DEADEND ANGLE
 34.5 KV
 DIRECT EMBED FOUNDATION



TYPE DEA
 ROUNDWOOD SINGLE POLE
 15° - 90° DEADEND ANGLE
 34.5 KV
 DIRECT EMBED FOUNDATION

NOTE:
 STRUCTURE GEOMETRIES SUBJECT TO
 CHANGE WITH DETAILED ENGINEERING.

PRELIMINARY

CONTRACT SERVICES	REV	DESCRIPTION	ENG/PE#	DATE	DRN	CHKD	APPR	
D		ISSUED FOR REVIEW		7/31/15	SCF	KMS		
C		RE-ISSUED FOR PERMITTING		4/24/15	SCF	KMS		
B		RE-ISSUED FOR PERMITTING		4/10/15	SCF	KMS		
A		ISSUED FOR PERMITTING		3/13/15	SCF	KMS		
DWG REV		EPN/DESCRIPTION		CONT/PE#	DATE	DRN	CHKD	APPR

Public Service of New Hampshire
 A Northeast Utilities Company

T	D
DRAWN	SCF
ENGINEER	KMS
CHECKED	APJ
APPROVED	
DATE	9/2/14

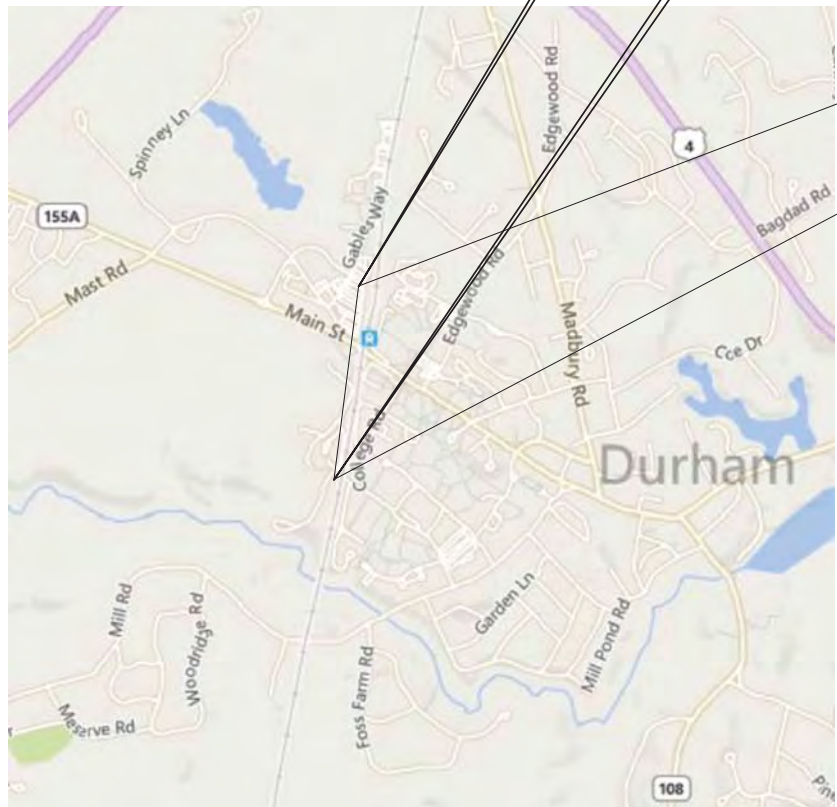
TYPE 34.5 KV & 115 KV STANDARD SECTION F107 STRUCTURE INDEX

SCALE: NTS

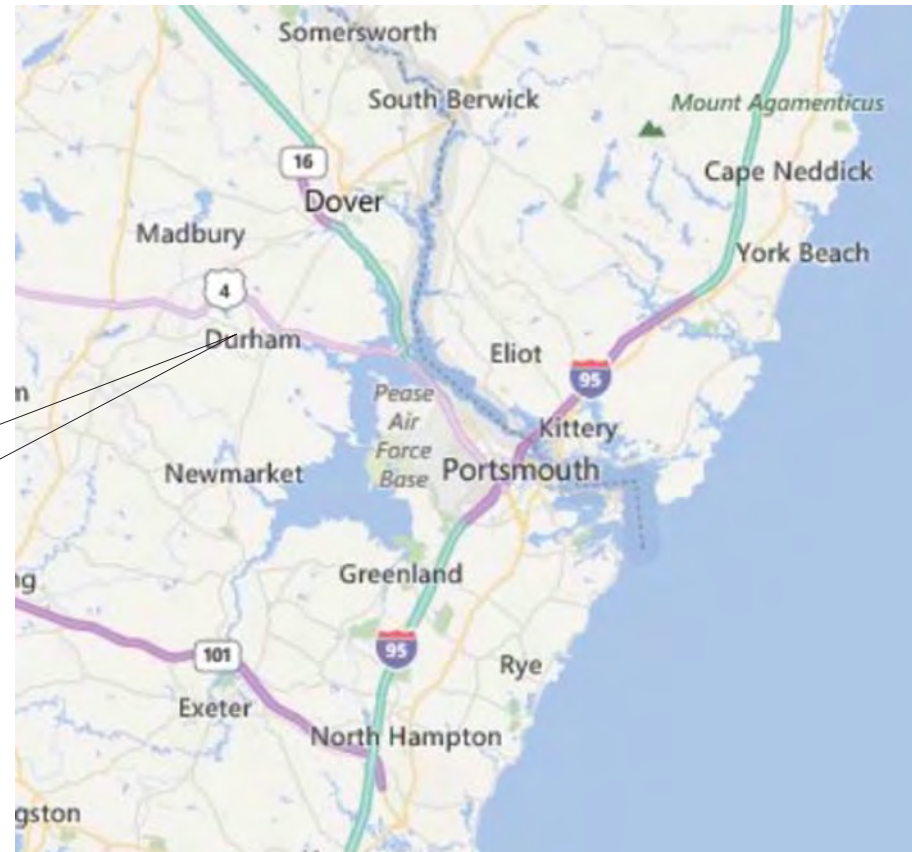
FILE: F10705SK03.DWG

DRAWING NO: F10705SK03A

PUBLIC SERVICE OF NEW HAMPSHIRE
 F-107
 UNH, DURHAM
 115 kV UNDERGROUND TRANSMISSION LINE



VICINITY MAP
 NOT TO SCALE



AREA MAP
 NOT TO SCALE

CONCEPTUAL ONLY
 NOT FOR CONSTRUCTION

811
 Know what's below.
 Call before you dig.

THREE BUSINESS DAYS BEFORE YOU DIG CALL
 NEW HAMPSHIRE DIG SAFE SYSTEM, INC.
 TOLL FREE
 1-888-344-7233



- NOTES:
- EXISTING DEPTH OF UTILITY CROSSINGS ASSUMED.
 - THE UTILITIES SHOWN HEREON ARE BASED ON FIELD SURVEYS, AERIAL PHOTOGRAPHY AND RECORD DOCUMENTS. OTHER FACILITIES MAY EXIST NOT DISCOVERED THROUGH THE RECORD CHECK. THE CONTRACTOR SHALL VERIFY THE EXACT LOCATION, BOTH HORIZONTAL AND VERTICAL, OF ALL UTILITIES THROUGH THE APPROPRIATE UTILITY COMPANIES. CALL BEFORE YOU DIG #811 OR #1-888-344-7233
 - ALL VERTICAL CURVES TO BE 400' UNLESS OTHERWISE NOTED.

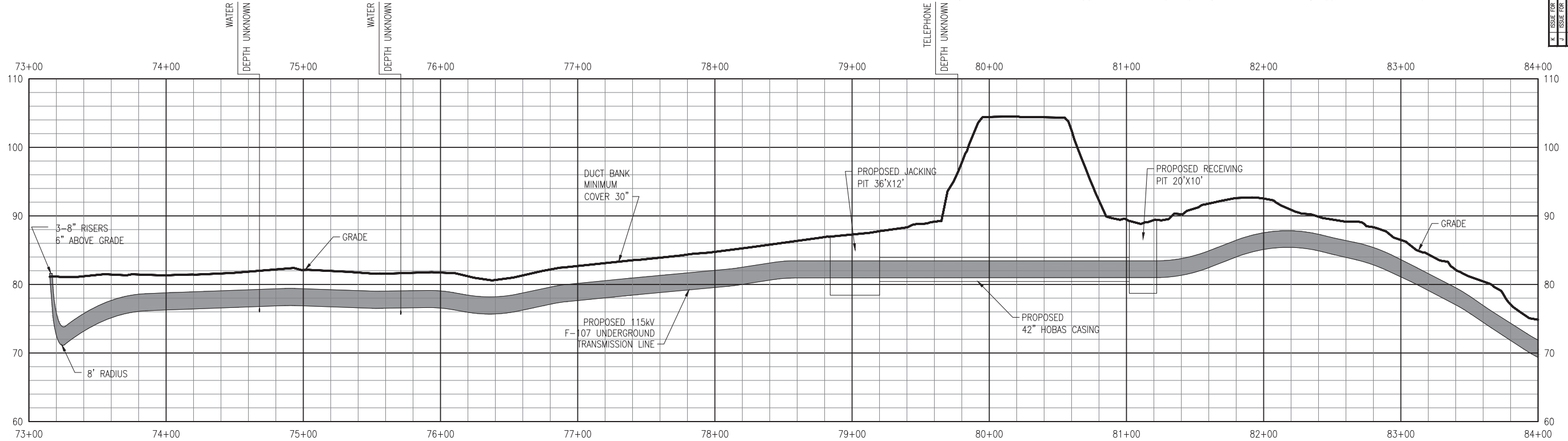
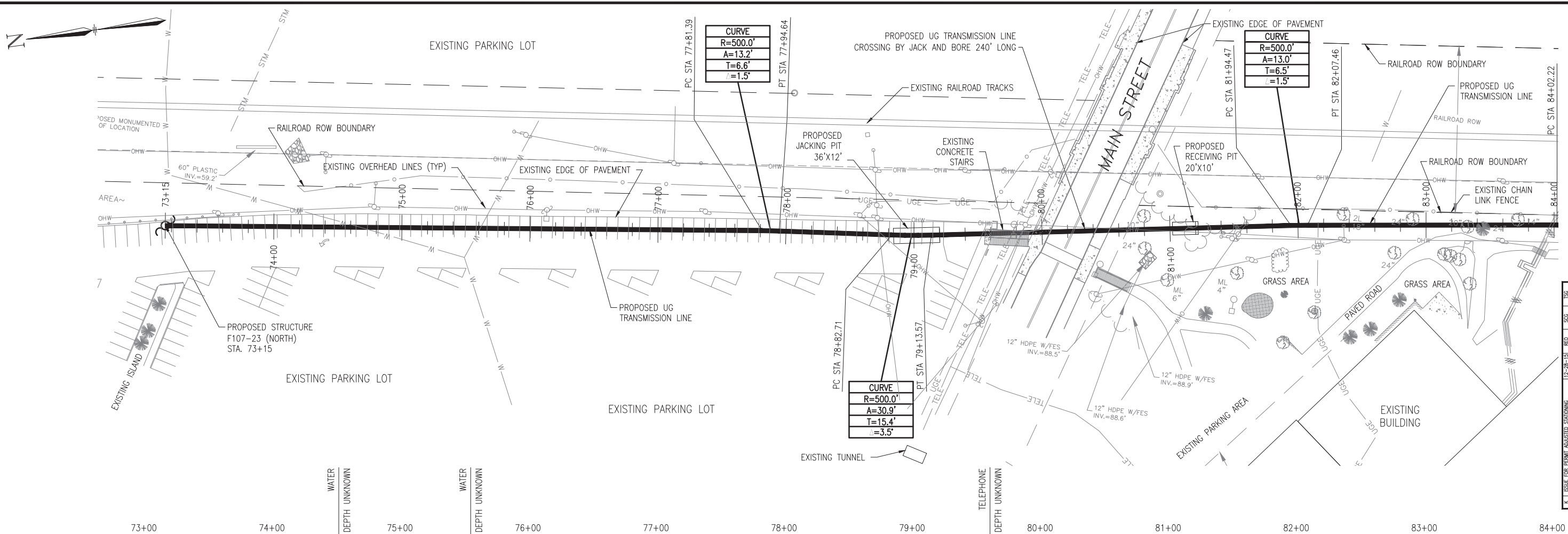
NO.	REVISION	DATE	BY	CHKD	APPRV.
K	ISSUE FOR PERMIT ADJUSTED STATIONING	12-28-15	REO	SCG	TSO
J	ISSUE FOR PERMIT	12-1-15	REO	SCG	TSO
I	REVISED PER PSMT SURVEY PLAN	10-7-15	REO	SCG	TSO
H	REVISED EXTENDED LAYOUT PER UNH	9-25-15	REO	SCG	TSO
G	EXTENDED ALIGNMENT	9-9-15	REO	SCG	TSO
F	REVISED UG. REVERT RISER LOCATION	9-4-15	REO	SCG	TSO
E	REVISED UG. REVERT RISER LOCATION	8-31-15	REO	SCG	TSO
D	REVISED UG. REVERT RISER LOCATION	8-31-15	REO	SCG	TSO
C	REVISED UG. REVERT RISER LOCATION	7/31/15	REO	SCG	TSO
B	PROFILE ADDED	7/31/15	REO	SCG	TSO
A	ISSUED FOR REVIEW	7/13/15	BWF	TSO	TSO

Public Service
 of New Hampshire
 A New England Utilities Company

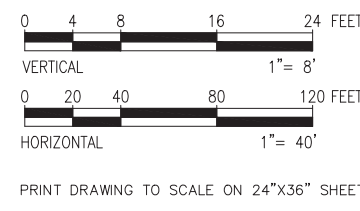
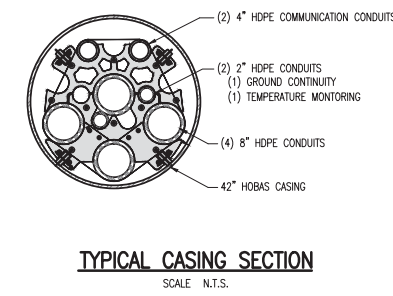
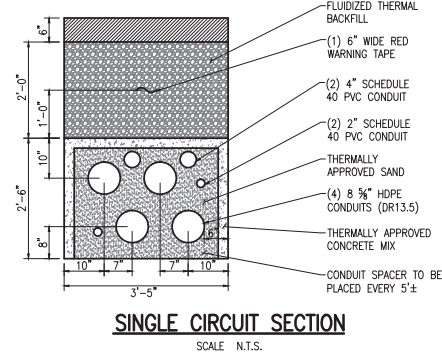
Transmission
 Business

115KV F107 UNDERGROUND
 TRANSMISSION LINE
 PLAN AND PROFILE VIEW
 DATE: 07/13/2015
 SCALE: H: 1"=40', V: 1"=8'

TOWN:
 DURHAM
 TRANSMISSION LINE:
 F107
 MILE NO.: 2
 DISCIPLINE/SHOT NO.
 SHEET 1 OF 3
 F10740705



- General Notes**
1. THE UTILITIES HAVE NOT BEEN IDENTIFIED AND WILL IMPACT THE DESIGN OF THE UNDERGROUND TRANSMISSION LINE AT THE LOCATION OF ANY CROSSINGS.
 2. ALL PROPERTY LINE INFORMATION IS SHOWN APPROXIMATE AND BASED ON TOWN ASSESSOR'S PLATS ONLY. THE AERIAL TRANSMISSION EASEMENT HAS BEEN ESTABLISHED BY SURVEY.
 3. TOPOGRAPHY IS BASED ON AN AERIAL LIDAR SURVEY AND SATELLITE IMAGERY, THEREFORE GRADES ARE APPROXIMATE. AN ON THE GROUND DETAIL SURVEY WILL BE REQUIRED FOR DESIGN.
 4. DETAIL DESIGN MAY BE OPTIMIZED TO REFLECT ACTUAL CONDITIONS.
 5. ALL EXISTING ROAD MARKINGS ARE ESTIMATED.
 6. CONTRACTOR IS RESPONSIBLE FOR PLACING SILT FENCE OR OTHER APPROVED EROSION CONTROL DEVICES. WETLANDS HAVE NOT BEEN DELINEATED AND HAVE NOT BEEN CONSIDERED FOR DESIGN.
 7. CONTRACTOR SHALL INSTALL SILT SACK OR APPROVED EQUAL TO ALL CATCH BASINS OR CURB INLETS WITHIN THE DEFINED WORK ZONE.
 8. CONTRACTOR SHALL ENSURE PROPER CONTROLS ARE IN PLACE SO WORKERS DO NOT TRACK SEDIMENT PAST THE LIMITS OF WORK.
 9. ALL VERTICAL RADII ARE 500' UNLESS OTHERWISE NOTED



811
THREE BUSINESS DAYS BEFORE YOU DIG CALL
NEW HAMPSHIRE DIG SAFE SYSTEM, INC.
TOLL FREE
1-888-344-7233

**CONCEPTUAL ONLY
NOT FOR CONSTRUCTION**

POWER ENGINEERS

NO.	DATE	REVISION
K	12-28-15	REV. SCG
J	12-1-15	REV. SCG
I	10-7-15	REV. SCG
H	9-25-15	REV. SCG
G	9-25-15	REV. SCG
F	9-9-15	REV. SCG
E	9-4-15	REV. SCG
D	8-31-15	REV. SCG
C	7-31-15	REV. SCG
B	7/31/15	REV. SCG
A	7/13/15	REV. SCG
		DATE
		DRWN
		CHKD
		APPRV.

Public Service of New Hampshire
A Non-Union Utility Company

Transmission Business

115kV F107 UNDERGROUND TRANSMISSION LINE
PLAN AND PROFILE VIEW

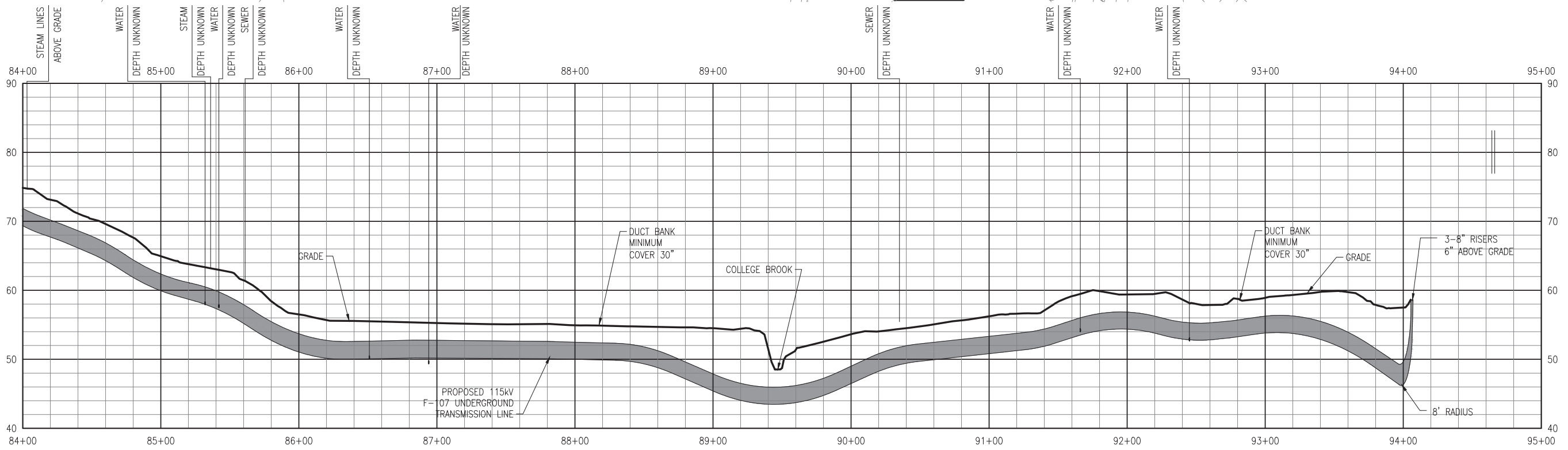
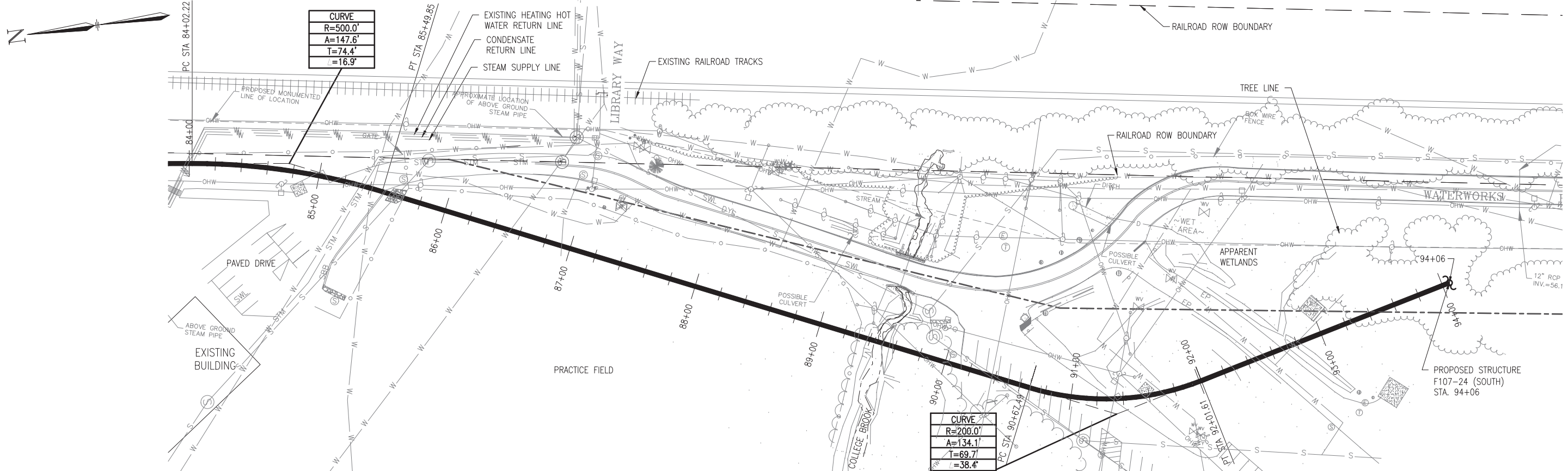
DATE: 07/13/2015
SCALE: H=1"=40', V=1"=8'

DES: TSG CMT: TSG
DRW: BWF APP: []

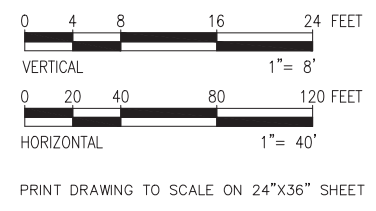
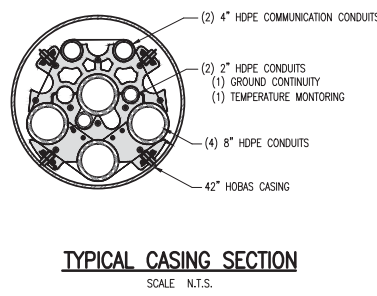
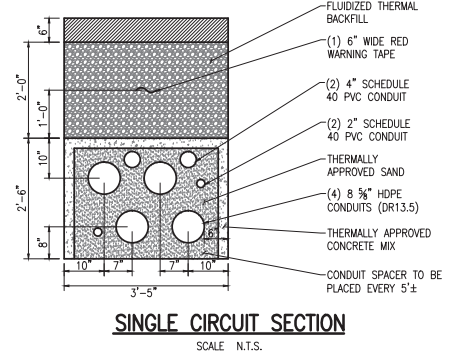
TOWN: DURHAM
TRANSMISSION LINE: F107
MILE NO: 2
DISCIPLINE/SHT NO. []

SHEET 2 OF 3
F10740705

REVISION: 01/23/2014



- General Notes**
1. THE UTILITIES HAVE NOT BEEN IDENTIFIED AND WILL IMPACT THE DESIGN OF THE UNDERGROUND TRANSMISSION LINE AT THE LOCATION OF ANY CROSSINGS.
 2. ALL PROPERTY LINE INFORMATION IS SHOWN APPROXIMATE AND BASED ON TOWN ASSESSOR'S PLATS ONLY. THE AERIAL TRANSMISSION EASEMENT HAS BEEN ESTABLISHED BY SURVEY.
 3. TOPOGRAPHY IS BASED ON AN AERIAL LIDAR SURVEY AND SATELLITE IMAGERY, THEREFORE GRADES ARE APPROXIMATE. AN ON THE GROUND DETAIL SURVEY WILL BE REQUIRED FOR DESIGN.
 4. DETAIL DESIGN MAY BE OPTIMIZED TO REFLECT ACTUAL CONDITIONS.
 5. ALL EXISTING ROAD MARKINGS ARE ESTIMATED.
 6. CONTRACTOR IS RESPONSIBLE FOR PLACING SILT FENCE OR OTHER APPROVED EROSION CONTROL DEVICES. WETLANDS HAVE NOT BEEN DELINEATED AND HAVE NOT BEEN CONSIDERED FOR DESIGN.
 7. CONTRACTOR SHALL INSTALL SILT SACK OR APPROVED EQUAL TO ALL CATCH BASINS OR CURB INLETS WITHIN THE DEFINED WORK ZONE.
 8. CONTRACTOR SHALL ENSURE PROPER CONTROLS ARE IN PLACE SO WORKERS DO NOT TRACK SEDIMENT PAST THE LIMITS OF WORK.
 9. ALL VERTICAL RADII ARE 500' UNLESS OTHERWISE NOTED



THREE BUSINESS DAYS BEFORE YOU DIG CALL
NEW HAMPSHIRE DIG SAFE SYSTEM, INC.
 TOLL FREE
 1-888-344-7233

**CONCEPTUAL ONLY
 NOT FOR CONSTRUCTION**

NO.	REVISION	DATE	BY	CHKD.	APPRV.
A	ISSUED FOR REVIEW	7/13/15	BWF	TSO	
B	PROFILE ADDED	7/31/15	REG	SWG	
C	REVISED UG AND RISER LOCATIONS	8-31-15	REG	TSO	
D	REVISED UG AND RISER LOCATIONS	9-4-15	REG	TSO	
E	REVISED UG AND RISER LOCATIONS	9-9-15	REG	TSO	
F	EXTENDED ALIGNMENT	9-25-15	REG	TSO	
G	REVISED EXTENDED LAYOUT PER UMR	10-7-15	REG	TSO	
H	REVISED PER PSMT SURVEY PLAN	12-1-15	REG	TSO	
I	ISSUE FOR PERMIT	12-28-15	REG	TSO	
K	ISSUE FOR PERMIT ADJUSTED STATIONS	12-28-15	REG	TSO	

Public Service
of New Hampshire
A New England Utilities Company

Transmission
Business

115kV F107 UNDERGROUND
TRANSMISSION LINE
PLAN AND PROFILE VIEW

SCALE: H: 1"=40', V: 1"=8'

DATE: 07/13/2015

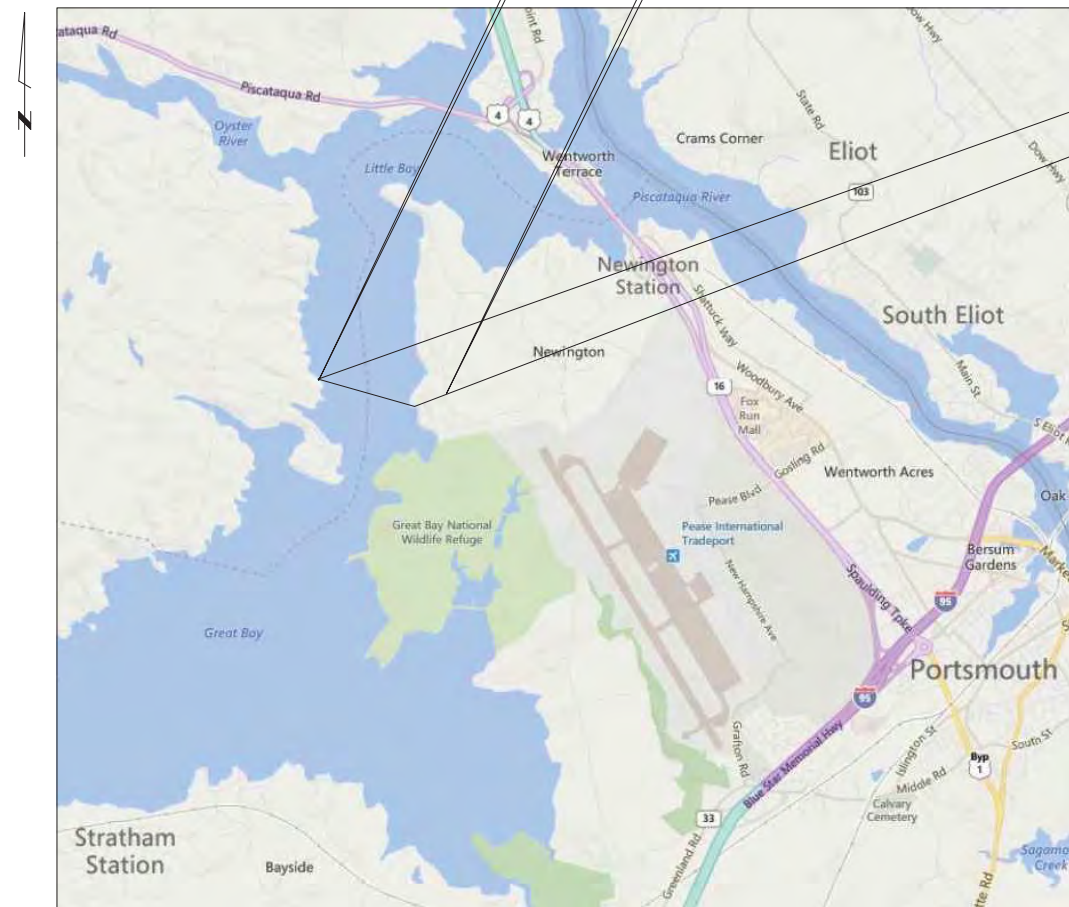
DESIGN: TSO
CHECKED: BWF
DRAWN: BWF
APPROVED: [Signature]

TOWN: DURHAM
TRANSMISSION LINE: F107
MILE NO: 2
DISCIPLINE/SHT NO. [Blank]

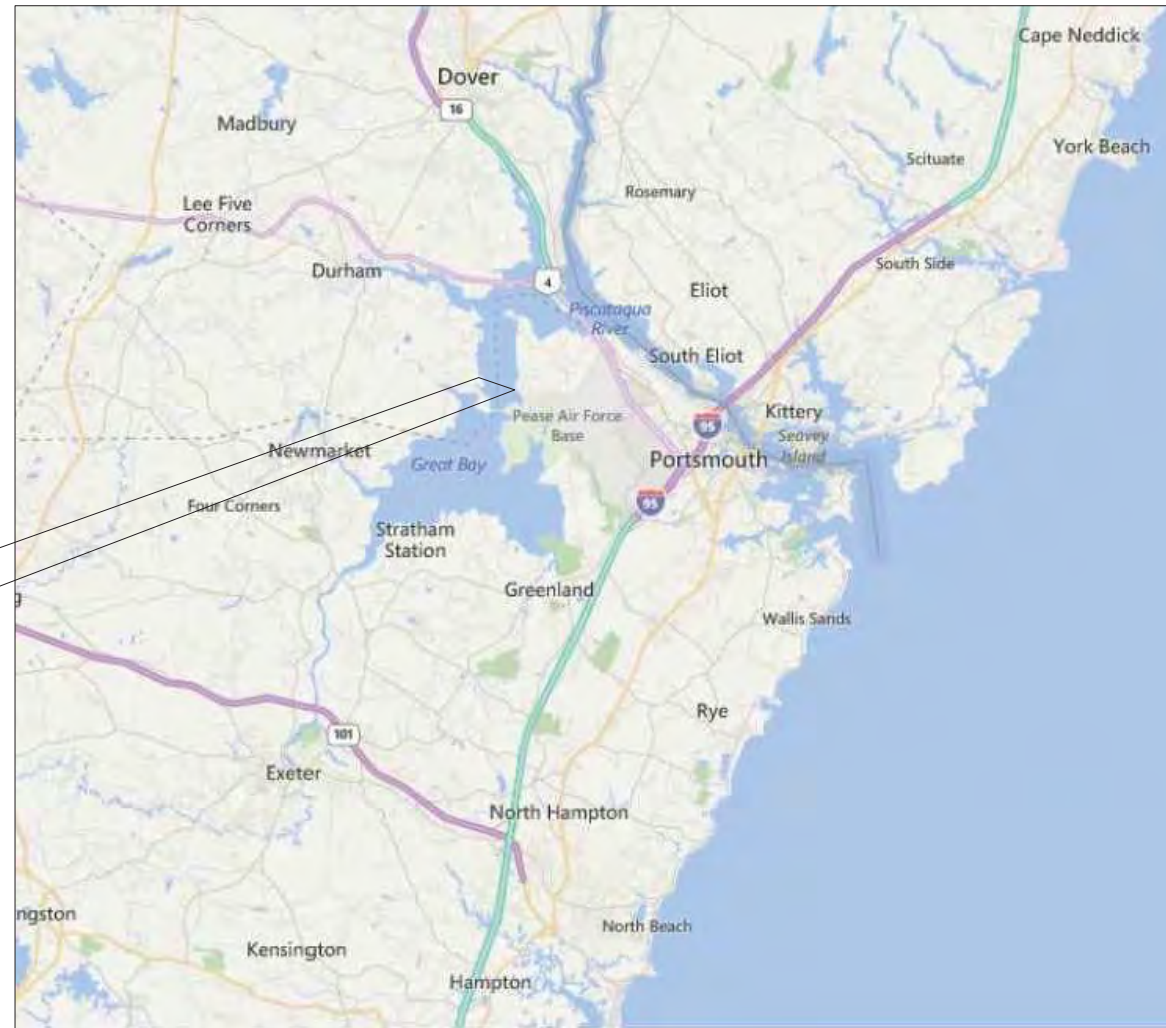
SHEET 3 OF 3
F10740705

REVISION: 01/23/2014

PUBLIC SERVICE OF NEW HAMPSHIRE
 F-107
 LITTLE BAY, PORTSMOUTH
 115 kV UNDERGROUND TRANSMISSION LINE



VICINITY MAP
 NOT TO SCALE



AREA MAP
 NOT TO SCALE

WESTERN LANDING

LITTLE BAY ROAD



Know what's below.
 Call before you dig.



NOTES:

1. EXISTING DEPTH OF UTILITY CROSSINGS ASSUMED.
2. THE UTILITIES SHOWN HEREON ARE BASED ON FIELD SURVEYS, AERIAL PHOTOGRAPHY AND RECORD DOCUMENTS. OTHER FACILITIES MAY EXIST NOT DISCOVERED THROUGH THE RECORD CHECK. THE CONTRACTOR SHALL VERIFY THE EXACT LOCATION, BOTH HORIZONTAL AND VERTICAL, OF ALL UTILITIES THROUGH THE APPROPRIATE UTILITY COMPANIES. CALL BEFORE YOU DIG #811 OR #1-888-344-7233
3. ALL VERTICAL CURVES TO BE 400' UNLESS OTHERWISE NOTED.

NO.	REVISION	DATE	BY	CHKD	APPRV.
7	ISSUE FOR PERMIT RELOCATE RISER	12/28/15	REC	SCG	TSG
6	ISSUE FOR PERMIT	12/14/15	REC	SCG	TSG
5	ISSUE FOR PERMIT	11/19/15	REC	SCG	TSG
4	ISSUE FOR PERMIT - ALIGNMENT ADJ.	5-18-15	REC	SCG	TSG
3	ISSUE FOR PERMIT - ALIGNMENT ADJ.	9-8-15	REC	SCG	TSG
2	ISSUE FOR PERMIT - ALIGNMENT ADJ.	10/14/14	SCG	SCG	TSG
1	ISSUE FOR PERMIT	8-25-14	JRD	TSG	CS
0	ISSUE FOR PERMIT				

Public Service
 of New Hampshire
 A Northeast Utilities Company



T 7

UNDERGROUND TRANSMISSION
 PLAN & PROFILE
 SEACOAST RELIABILITY PROJECT
 SCALE: H. 1"=40', V. 1"=8'
 DATE: 8/25/2015

DES: TSG
 CHECK: T
 DRAW: REC
 APR: T
 TOWN: NEWINGTON, NH
 TRANSMISSION LINE: F-107
 MILE NO:
 DISCIPLINE/SHT NO:
 SHEET 1 OF 12

COVER

REVISION: 01/23/2014