

July 26, 2018

Denis Hebert
Town of Newington
205 Nimble Hill Road
Newington, NH 03801

Re: Stone Walls in Newington

Dear Mr. Hebert,

Thank you for the opportunity to address the concerns you raised regarding potential impacts to stone walls within the Town of Newington on May 16, 2018. Seven stone walls, as depicted on the provided maps, have been identified within the Seacoast Reliability Project (SRP) corridor in the Town of Newington.

One of these stone walls (WP-40), constructed by the Beswick Family, is modern in nature and does not serve as a boundary marker (see the attached project mapping). WP-40 will be carefully disassembled during project construction and rebuilt upon completion of construction activities. Eversource has entered into an agreement with the landowner allowing for the temporary modification of WP-40.

One other stone wall (WP-42A), which marks the boundary between the Sabine and Lee properties, will also be carefully disassembled during project construction and rebuilt upon completion of construction activities. Both adjacent landowners, on either side of the stone wall, have granted written permission allowing for the temporary modification of WP-42A.

Physical impacts to the remaining five stone walls (WP-41, WP-42, WP-43, WP-44, and WP-45) shall be avoided by the Project through the implementation of one or more of the following two measures to include: (a) traversing the wall through an existing breach and (b) traversing the wall using timber matting to temporarily bridge over the wall.

If you have any questions, please contact me at Sandra.Gagnon@eversource.com or (603) 634-3181.

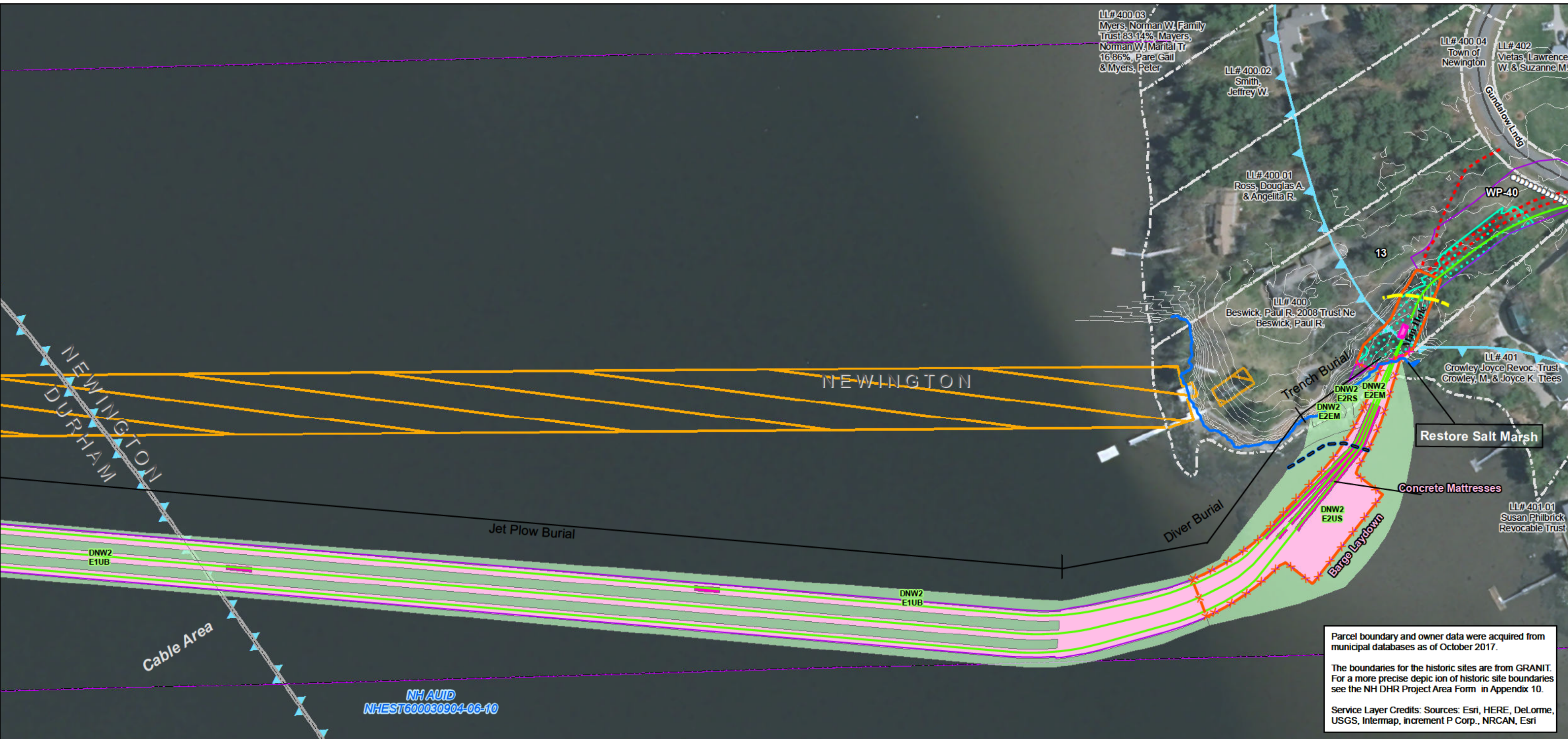
Sincerely,



Sandra Gagnon
Sr. Project Manager - Siting and Construction Services
Eversource Energy

STONE WALL – MAP SHEET REFERENCE TABLE

Stone Wall ID	Map Sheet Number
WP-40	1-2
WP-41	4
WP-42	4
WP-42A	4
WP-43	4-5
WP-44	5
WP-45	5

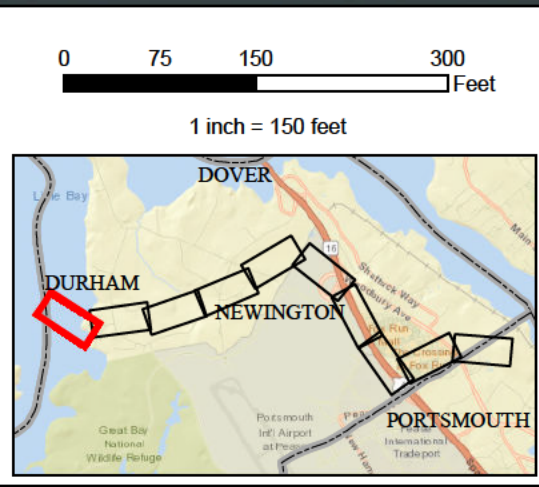


Parcel boundary and owner data were acquired from municipal databases as of October 2017.

The boundaries for the historic sites are from GRANIT. For a more precise depiction of historic site boundaries see the NH DHR Project Area Form in Appendix 10.

Service Layer Credits: Sources: Esri, HERE, DeLorme, USGS, Intermap, increment P Corp., NRCAN, Esri

<ul style="list-style-type: none"> Town Boundary Approximate Parcel Boundary PSNH Fee Area Project Corridor Work Pad Roads <ul style="list-style-type: none"> Local Not Maintained Private State Railroad 	<ul style="list-style-type: none"> Existing Str (Remain) Existing Str (Removed/Modified) Access Roads Underground Cable Silt Curtain Silt Fence, Hay Bale, Erosion Control Mix Berm Straw Wattle Wetland Prime Wetland Wetland Impact (PERM) Wetland Impact (TEMP) Wetland Number & Cover Type 	<ul style="list-style-type: none"> Stream Centerline Stream Top of Bank Temporary Culvert Stonewall alignment Temporary Mat Bridge NH DOT Right-of-way Historical Sites Designated River Buffer 250' Conservation Lands 100 Year Floodplain 	<ul style="list-style-type: none"> Structures <ul style="list-style-type: none"> Direct Embed Drilled Pier Relocated Distribution Steep Slope BMPs Tree Clearing Stream Buffer 2ft Contour Tidal Buffer Zone Highest Observable Tide Line/Reference Line (4ft Contour) Mean Lower Low Water Historic District
---	--	---	--



EVERSOURCE ENERGY

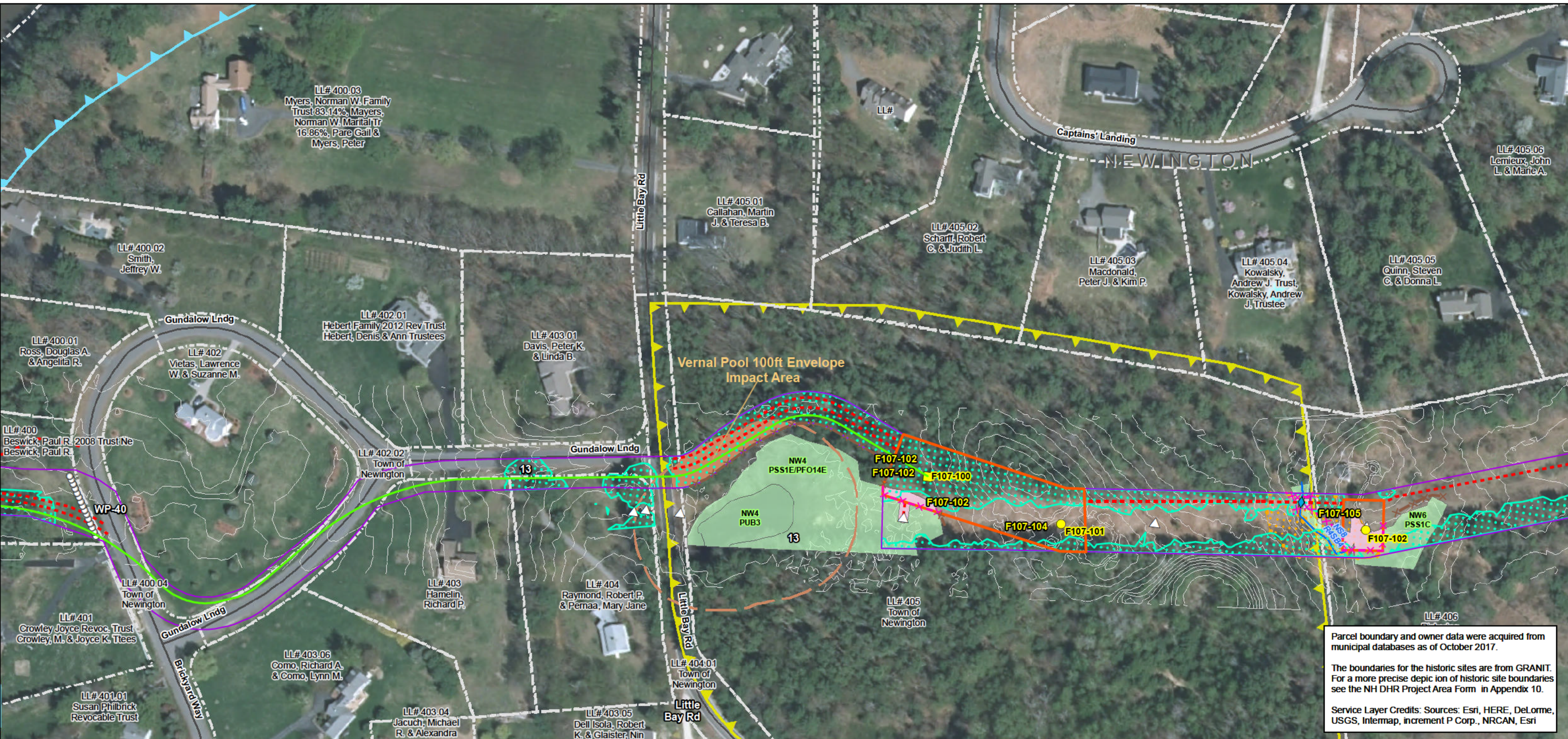
NORMANDEAU ASSOCIATES
Environmental Consultants

Seacoast Reliability Project

Newington, NH Stone Wall Maps

SARAH D. ALLEN
No. 083
CERTIFIED WETLAND SCIENTIST

9/1/2017



Parcel boundary and owner data were acquired from municipal databases as of October 2017.

The boundaries for the historic sites are from GRANIT. For a more precise depiction of historic site boundaries see the NH DHR Project Area Form in Appendix 10.

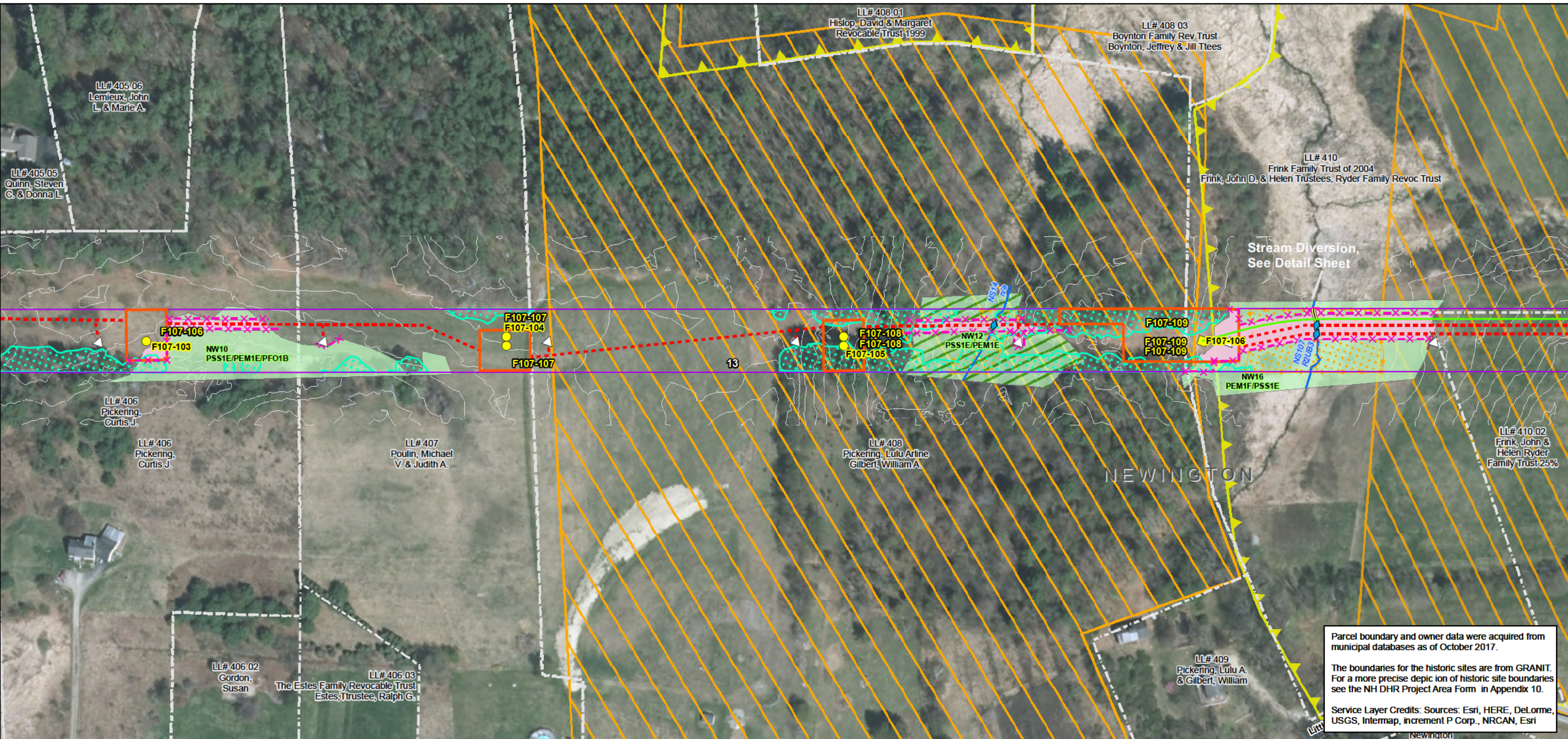
Service Layer Credits: Sources: Esri, HERE, DeLorme, USGS, Intermap, increment P Corp., NRCAN, Esri

<p>Drawn By: dpelletier</p> <p>Date: 7/26/2018</p> <p>Project No: 22860_003</p>	<ul style="list-style-type: none"> Town Boundary Approximate Parcel Boundary PSNH Fee Area Project Corridor Work Pad Roads Local Not Maintained Private State Railroad Existing Str (Remain) Existing Str (Removed/Modified) Access Roads Underground Cable Silt Curtain Silt Fence, Hay Bale, Erosion Control Mix Berm Straw Wattle Wetland Prime Wetland Wetland Impact (PERM) Wetland Impact (TEMP) Wetland Number & Cover Type Stream Centerline Stream Top of Bank Temporary Culvert Stonewall alignment Temporary Mat Bridge NH DOT Right-of-way Historical Sites Designated River Buffer 250' Conservation Lands 100 Year Floodplain F107-107 Permitting Structure #s F107-107 Proposed Structure #s Structures Direct Embed Drilled Pier Relocated Distribution Steep Slope BMPs Tree Clearing Stream Buffer 2ft Contour Tidal Buffer Zone Highest Observable Tide Line/Reference Line (4ft Contour) Mean Lower Low Water Historic District 	<p>Scale: 1 inch = 150 feet</p> <p>0 75 150 300 Feet</p>
---	---	--

Seacoast Reliability Project

Newington, NH Stone Wall Maps

9/1/2017



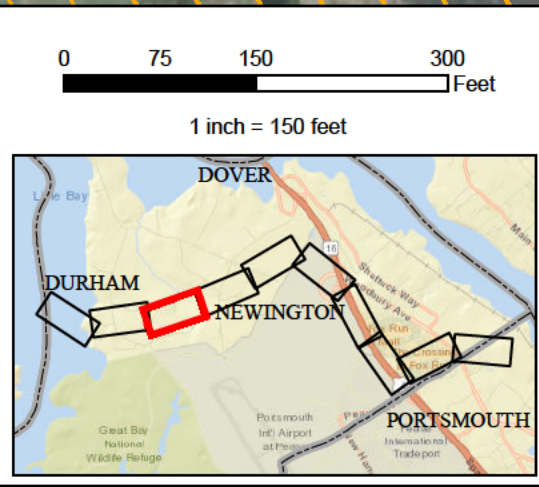
Parcel boundary and owner data were acquired from municipal databases as of October 2017.

The boundaries for the historic sites are from GRANIT. For a more precise depiction of historic site boundaries see the NH DHR Project Area Form in Appendix 10.

Service Layer Credits: Sources: Esri, HERE, DeLorme, USGS, Intermap, increment P Corp., NRCAN, Esri

Drawn By: dpelletier
Date: 7/26/2018
Project No: 22860_003

Town Boundary	Existing Str (Remain)	Stream Centerline	Structures
Approximate Parcel Boundary	Existing Str (Removed/Modified)	Stream Top of Bank	Direct Embed
PSNH Fee Area	Access Roads	Temporary Culvert	Drilled Pier
Project Corridor	Underground Cable	Stonewall alignment	Relocated Distribution
Work Pad	Silt Curtain	Temporary Mat Bridge	Steep Slope BMPs
Roads	Silt Fence, Hay Bale, Erosion Control Mix Berm	NH DOT Right-of-way	Tree Clearing
Local	Straw Wattle	Historical Sites	Stream Buffer
Not Maintained	Wetland	Designated River Buffer 250'	2ft Contour
Private	Prime Wetland	Conservation Lands	Tidal Buffer Zone
State	Wetland Impact (PERM)	100 Year Floodplain	Highest Observable Tide Line/Reference Line (4ft Contour)
Railroad	Wetland Impact (TEMP)	F107-107 Permitting Structure #s	Mean Lower Low Water
	Wetland Number & Cover Type	F107-107 Proposed Structure #s	Historic District



EVERSOURCE
ENERGY

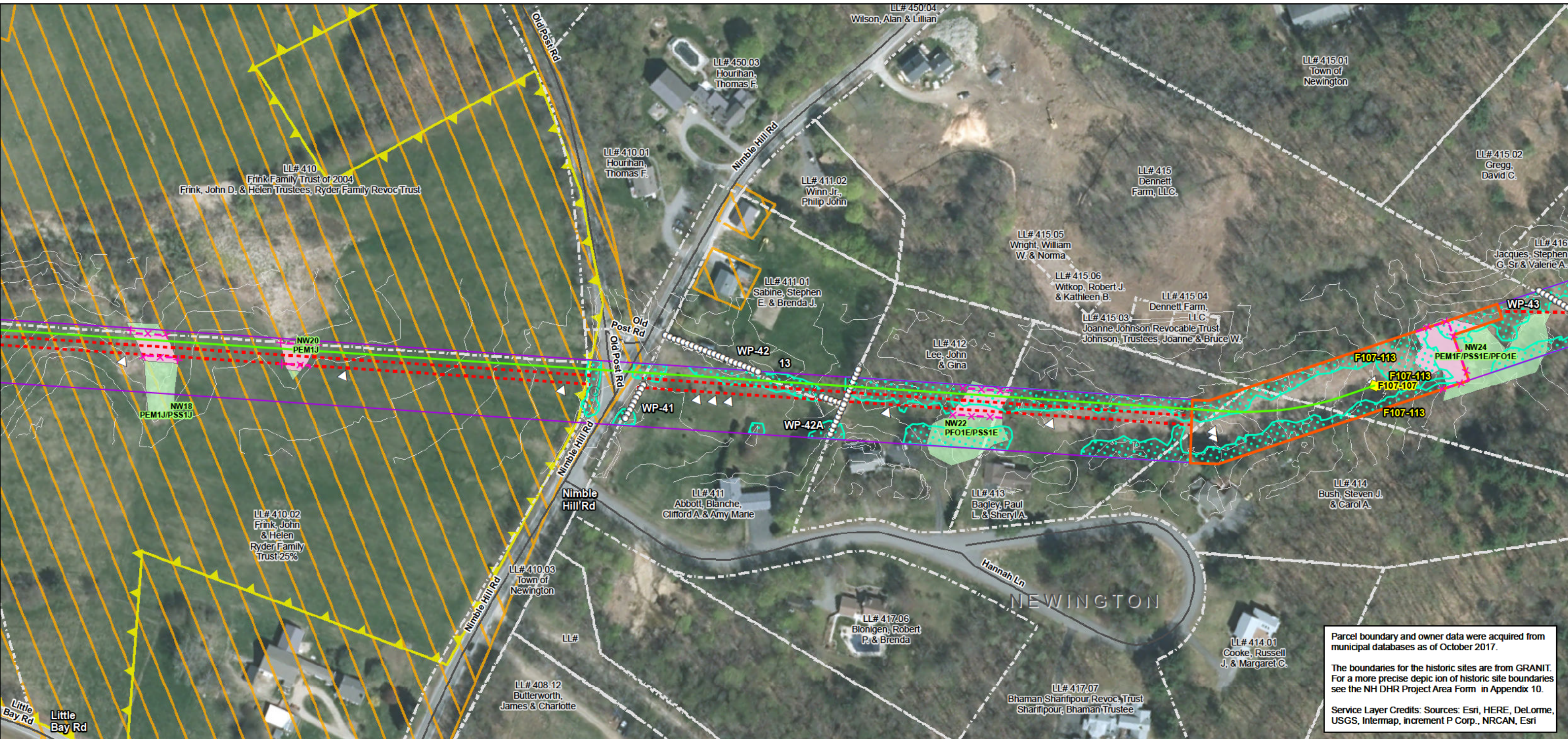
NORMANDEAU ASSOCIATES
Environmental Consultants

Seacoast Reliability Project

Newington, NH Stone Wall Maps

SARAH D. ALLEN
No. 083
CERTIFIED WETLAND SCIENTIST

9/1/2017



Parcel boundary and owner data were acquired from municipal databases as of October 2017.

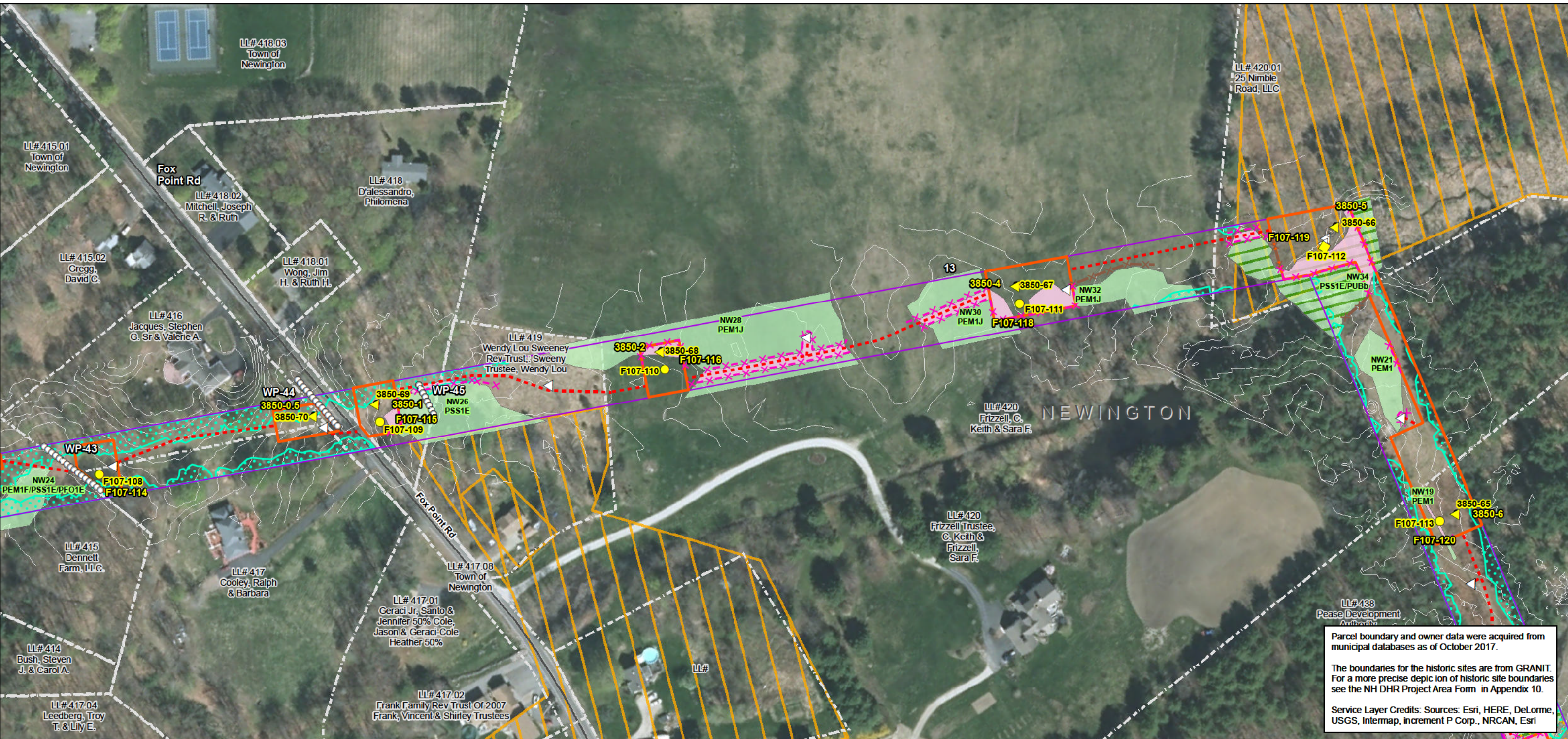
The boundaries for the historic sites are from GRANIT. For a more precise depiction of historic site boundaries see the NH DHR Project Area Form in Appendix 10.

Service Layer Credits: Sources: Esri, HERE, DeLorme, USGS, Intermap, increment P Corp., NRCAN, Esri

<p>Drawn By: dpelletier Date: 7/26/2018 Project No: 22860_003</p>	<ul style="list-style-type: none"> Town Boundary Approximate Parcel Boundary PSNH Fee Area Project Corridor Work Pad Roads Local Not Maintained Private State Railroad Existing Str (Remain) Existing Str (Removed/Modified) Access Roads Underground Cable Silt Curtain Silt Fence, Hay Bale, Erosion Control Mix Berm Straw Wattle Wetland Prime Wetland Wetland Impact (PERM) Wetland Impact (TEMP) Wetland Number & Cover Type Stream Centerline Stream Top of Bank Temporary Culvert Stonewall alignment Temporary Mat Bridge NH DOT Right-of-way Historical Sites Designated River Buffer 250' Conservation Lands 100 Year Floodplain F107-107 Permitting Structure #s F107-107 Proposed Structure #s Structures Direct Embed Drilled Pier Relocated Distribution Steep Slope BMPs Tree Clearing Stream Buffer 2ft Contour Tidal Buffer Zone Highest Observable Tide Line/Reference Line (4ft Contour) Mean Lower Low Water Historic District 	<p>Scale: 0 75 150 300 Feet 1 inch = 150 feet</p>
---	---	---

Seacoast Reliability Project

Newington, NH Stone Wall Maps



Parcel boundary and owner data were acquired from municipal databases as of October 2017.

The boundaries for the historic sites are from GRANIT. For a more precise depiction of historic site boundaries see the NH DHR Project Area Form in Appendix 10.

Service Layer Credits: Sources: Esri, HERE, DeLorme, USGS, Intermap, increment P Corp., NRCAN, Esri

<p>Town Boundary</p> <p>Approximate Parcel Boundary</p> <p>PSNH Fee Area</p> <p>Project Corridor</p> <p>Work Pad</p> <p>Roads</p> <ul style="list-style-type: none"> Local Not Maintained Private State Railroad 	<ul style="list-style-type: none"> Existing Str (Remain) Existing Str (Removed/Modified) Access Roads Underground Cable Silt Curtain Silt Fence, Hay Bale, Erosion Control Mix Berm Straw Wattle Wetland Prime Wetland Wetland Impact (PERM) Wetland Impact (TEMP) Wetland Number & Cover Type 	<ul style="list-style-type: none"> Stream Centerline Stream Top of Bank Temporary Culvert Stonewall alignment Temporary Mat Bridge NH DOT Right-of-way Historical Sites Designated River Buffer 250' Conservation Lands 100 Year Floodplain <p>F107-107 Permitting Structure #s</p> <p>F107-107 Proposed Structure #s</p>	<p>Structures</p> <ul style="list-style-type: none"> Direct Embed Drilled Pier Relocated Distribution Steep Slope BMPs Tree Clearing Stream Buffer 2ft Contour Tidal Buffer Zone Highest Observable Tide Line/Reference Line (4ft Contour) Mean Lower Low Water Historic District 	<p>0 75 150 300 Feet</p> <p>1 inch = 150 feet</p>
---	--	---	---	---

EVERSOURCE ENERGY

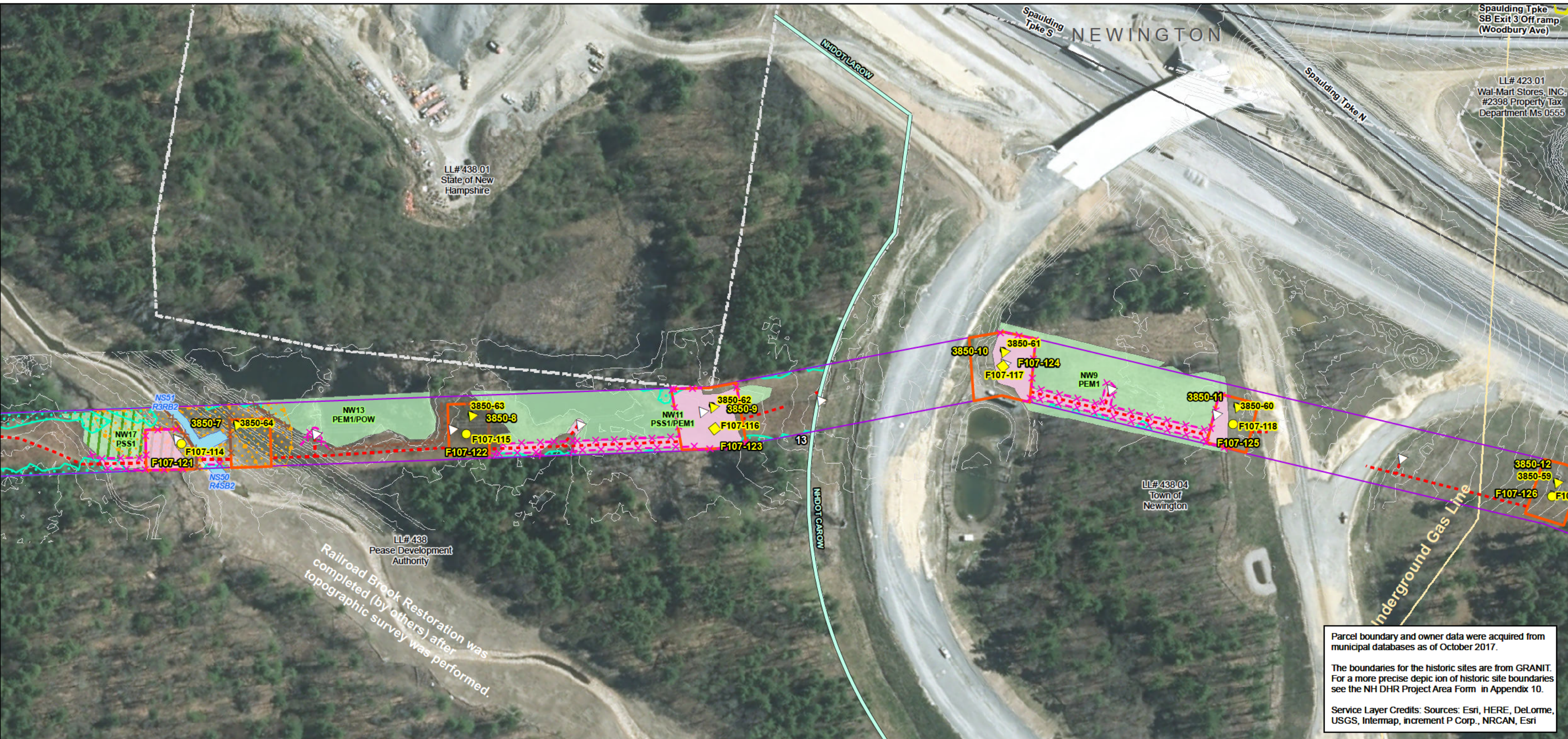
NORMANDEAU ASSOCIATES
Environmental Consultants

Seacoast Reliability Project

Newington, NH Stone Wall Maps

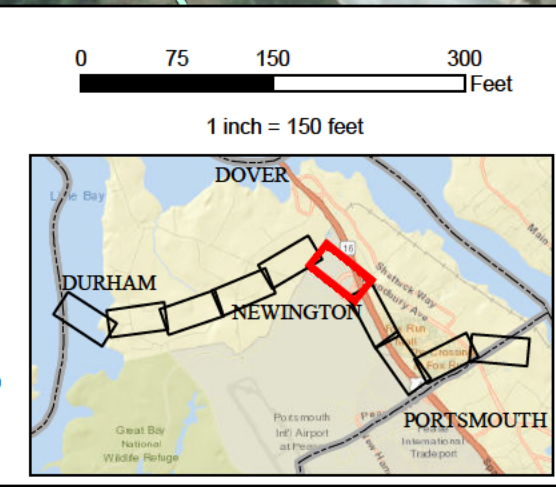
SARAH D. ALLEN
No. 083
CERTIFIED WETLAND SCIENTIST

9/1/2017



Date : 7/26/2018
 Drawn By: dpelletier
 Project No: 22860_003

Town Boundary	Existing Str (Remain)	Stream Centerline	Structures
Approximate Parcel Boundary	Existing Str (Removed/Modified)	Stream Top of Bank	Direct Embed
PSNH Fee Area	Access Roads	Temporary Culvert	Drilled Pier
Project Corridor	Underground Cable	Stonewall alignment	Relocated Distribution
Work Pad	Silt Curtain	Temporary Mat Bridge	Steep Slope BMPs
Roads	Silt Fence, Hay Bale, Erosion Control Mix Berm	NH DOT Right-of-way	Tree Clearing
Local	Straw Wattle	Historical Sites	Stream Buffer
Not Maintained	Wetland	Designated River Buffer 250'	2ft Contour
Private	Prime Wetland	Conservation Lands	Tidal Buffer Zone
State	Wetland Impact (PERM)	100 Year Floodplain	Highest Observable Tide Line/Reference Line (4ft Contour)
Railroad	Wetland Impact (TEMP)	F107-107 Permitting Structure #s	Mean Lower Low Water
	Wetland Number & Cover Type	F107-107 Proposed Structure #s	Historic District



EVERSOURCE
ENERGY

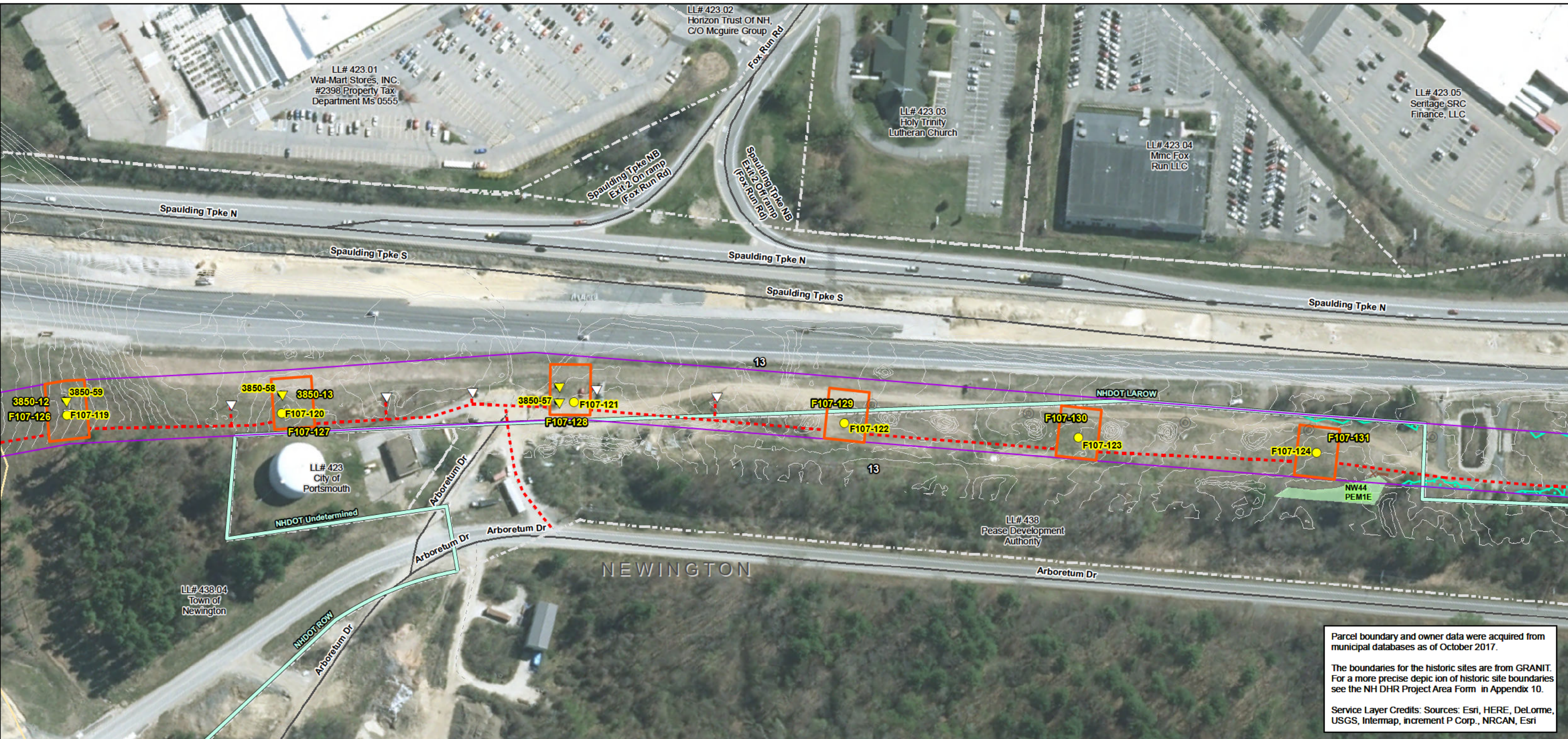
NORMANDEAU ASSOCIATES
Environmental Consultants

Seacoast Reliability Project

Newington, NH Stone Wall Maps

SARAH D. ALLEN
No. 083
CERTIFIED WETLAND SCIENTIST

9/1/2017

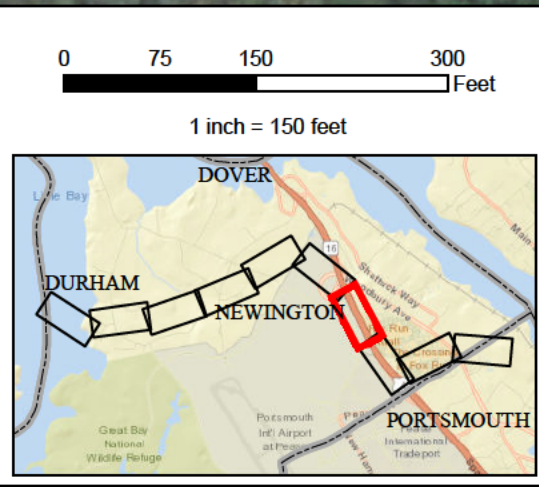


Parcel boundary and owner data were acquired from municipal databases as of October 2017.

The boundaries for the historic sites are from GRANIT. For a more precise depiction of historic site boundaries see the NH DHR Project Area Form in Appendix 10.

Service Layer Credits: Sources: Esri, HERE, DeLorme, USGS, Intermap, increment P Corp., NRCAN, Esri

<p>Drawn By: dpelletier</p> <p>Date: 7/26/2018</p> <p>Project No: 22860_003</p>	<ul style="list-style-type: none"> Town Boundary Approximate Parcel Boundary PSNH Fee Area Project Corridor Work Pad Roads Local Not Maintained Private State Railroad Existing Str (Remain) Existing Str (Removed/Modified) Access Roads Underground Cable Silt Curtain Silt Fence, Hay Bale, Erosion Control Mix Berm Straw Wattle Wetland Prime Wetland Wetland Impact (PERM) Wetland Impact (TEMP) Wetland Number & Cover Type Stream Centerline Stream Top of Bank Temporary Culvert Stonewall alignment Temporary Mat Bridge NH DOT Right-of-way Historical Sites Designated River Buffer 250' Conservation Lands 100 Year Floodplain F107-107 Permitting Structure #s F107-107 Proposed Structure #s Structures Direct Embed Drilled Pier Relocated Distribution Steep Slope BMPs Tree Clearing Stream Buffer 2ft Contour Tidal Buffer Zone Highest Observable Tide Line/Reference Line (4ft Contour) Mean Lower Low Water Historic District
---	---



EVERSOURCE ENERGY

NORMANDEAU ASSOCIATES
Environmental Consultants

Seacoast Reliability Project

Newington, NH Stone Wall Maps

SARAH D. ALLEN
No. 083
CERTIFIED WETLAND SCIENTIST

9/1/2017

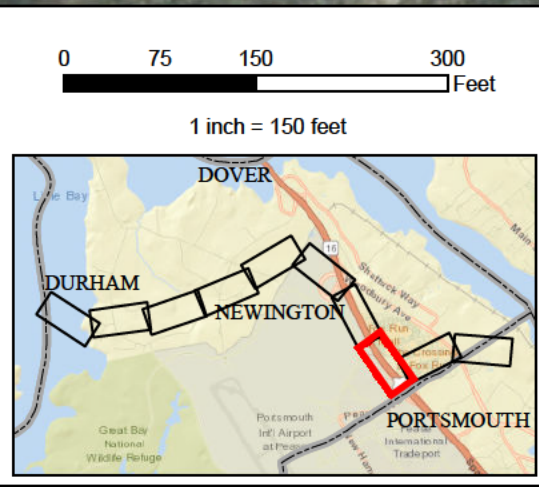


Parcel boundary and owner data were acquired from municipal databases as of October 2017.

The boundaries for the historic sites are from GRANIT. For a more precise depiction of historic site boundaries see the NH DHR Project Area Form in Appendix 10.

Service Layer Credits: Sources: Esri, HERE, DeLorme, USGS, Intermap, increment P Corp., NRCAN, Esri

<p>Drawn By: dpelletier</p> <p>Date: 7/26/2018</p> <p>Project No: 22860_003</p>	<ul style="list-style-type: none"> Town Boundary Approximate Parcel Boundary PSNH Fee Area Project Corridor Work Pad Roads Local Not Maintained Private State Railroad Existing Str (Remain) Existing Str (Removed/Modified) Access Roads Underground Cable Silt Curtain Silt Fence, Hay Bale, Erosion Control Mix Berm Straw Wattle Wetland Prime Wetland Wetland Impact (PERM) Wetland Impact (TEMP) Wetland Number & Cover Type Stream Centerline Stream Top of Bank Temporary Culvert Stonewall alignment Temporary Mat Bridge NH DOT Right-of-way Historical Sites Designated River Buffer 250' Conservation Lands 100 Year Floodplain Permitting Structure #s Proposed Structure #s Structures Direct Embed Drilled Pier Relocated Distribution Steep Slope BMPs Tree Clearing Stream Buffer 2ft Contour Tidal Buffer Zone Highest Observable Tide Line/Reference Line (4ft Contour) Mean Lower Low Water Historic District
---	---



EVERSOURCE ENERGY

NORMANDEAU ASSOCIATES
Environmental Consultants

Seacoast Reliability Project

Newington, NH Stone Wall Maps

SARAH D. ALLEN
No. 083
CERTIFIED WETLAND SCIENTIST

9/1/2017



Parcel boundary and owner data were acquired from municipal databases as of October 2017.

The boundaries for the historic sites are from GRANIT. For a more precise depiction of historic site boundaries see the NH DHR Project Area Form in Appendix 10.

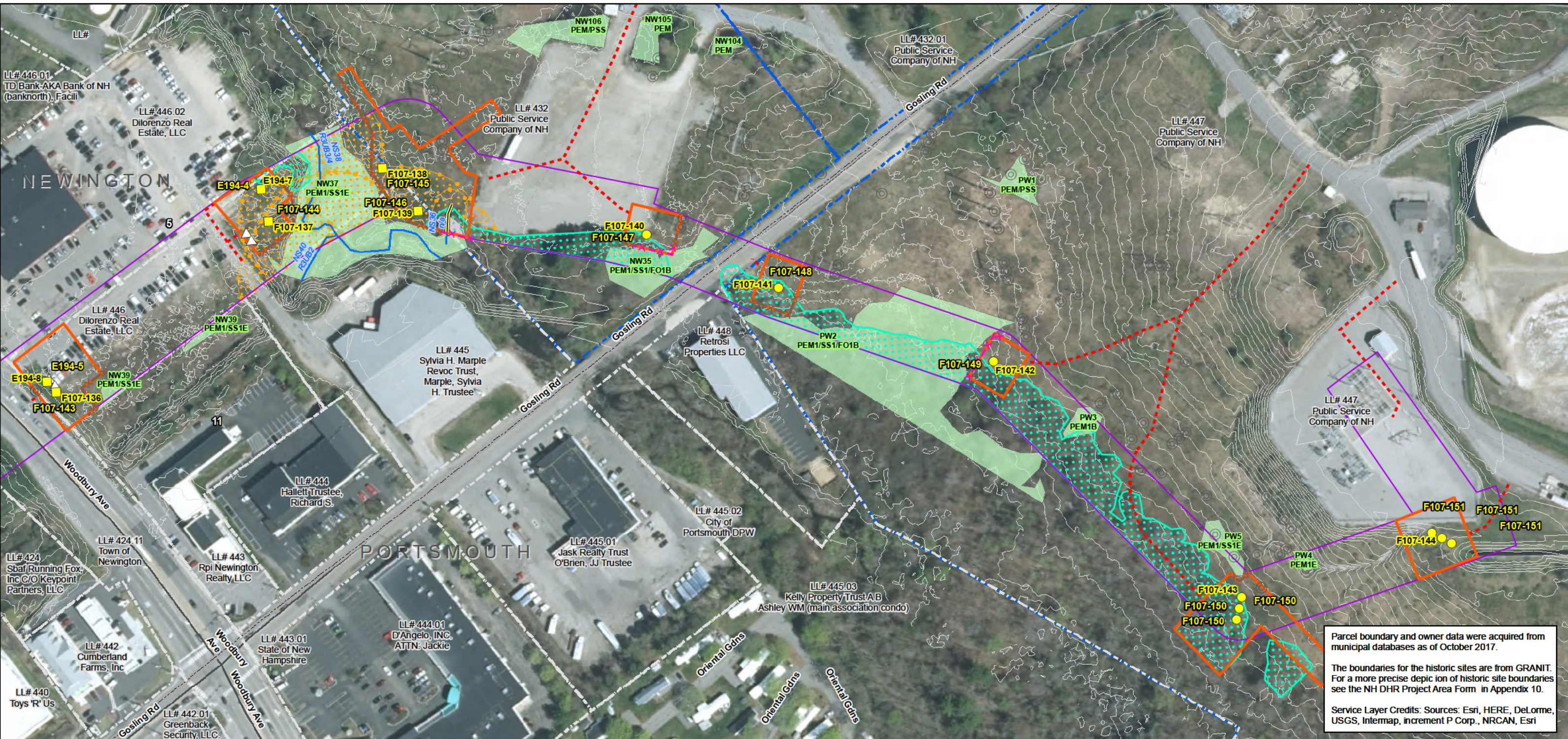
Service Layer Credits: Sources: Esri, HERE, DeLorme, USGS, Intermap, increment P Corp., NRCAN, Esri

<p>Drawn By: dpelletier</p> <p>Date: 7/26/2018</p> <p>Project No: 22860_003</p>	<ul style="list-style-type: none"> Town Boundary Approximate Parcel Boundary PSNH Fee Area Project Corridor Work Pad Roads Local Not Maintained Private State Railroad Existing Str (Remain) Existing Str (Removed/Modified) Access Roads Underground Cable Silt Curtain Silt Fence, Hay Bale, Erosion Control Mix Berm Straw Wattle Wetland Prime Wetland Wetland Impact (PERM) Wetland Impact (TEMP) Wetland Number & Cover Type Stream Centerline Stream Top of Bank Temporary Culvert Stonewall alignment Temporary Mat Bridge NH DOT Right-of-way Historical Sites Designated River Buffer 250' Conservation Lands 100 Year Floodplain F107-107 Permitting Structure #s F107-107 Proposed Structure #s Structures Direct Embed Drilled Pier Relocated Distribution Steep Slope BMPs Tree Clearing Stream Buffer 2ft Contour Tidal Buffer Zone Highest Observable Tide Line/Reference Line (4ft Contour) Mean Lower Low Water Historic District 	<p>0 75 150 300 Feet</p> <p>1 inch = 150 feet</p>
---	---	---

Seacoast Reliability Project

Newington, NH Stone Wall Maps

9/1/2017

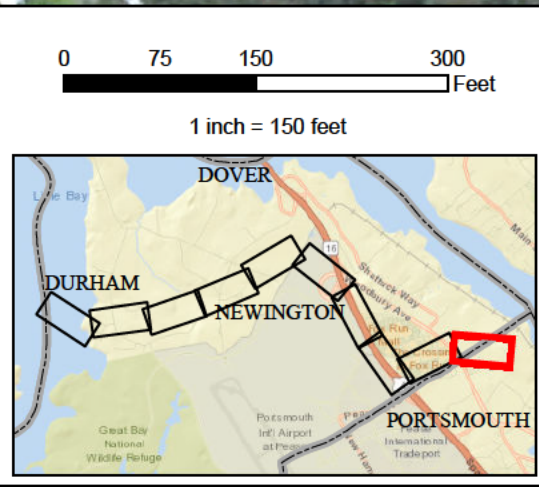


Parcel boundary and owner data were acquired from municipal databases as of October 2017.

The boundaries for the historic sites are from GRANIT. For a more precise depiction of historic site boundaries see the NH DHR Project Area Form in Appendix 10.

Service Layer Credits: Sources: Esri, HERE, DeLorme, USGS, Intermap, increment P Corp., NRCAN, Esri

<p>Drawn By: dpelleiter</p> <p>Date: 7/26/2018</p> <p>Project No: 22860_003</p>	<ul style="list-style-type: none"> Town Boundary Approximate Parcel Boundary PSNH Fee Area Project Corridor Work Pad Roads Local Not Maintained Private State Railroad Existing Str (Remain) Existing Str (Removed/Modified) Access Roads Underground Cable Silt Curtain Silt Fence, Hay Bale, Erosion Control Mix Berm Straw Wattle Wetland Prime Wetland Wetland Impact (PERM) Wetland Impact (TEMP) Wetland Number & Cover Type Stream Centerline Stream Top of Bank Temporary Culvert Stonewall alignment Temporary Mat Bridge NH DOT Right-of-way Historical Sites Designated River Buffer 250' Conservation Lands 100 Year Floodplain Structures Direct Embed Drilled Pier Relocated Distribution Steep Slope BMPs Tree Clearing Stream Buffer 2ft Contour Tidal Buffer Zone Highest Observable Tide Line/Reference Line (4ft Contour) Mean Lower Low Water Historic District
---	---



EVERSOURCE
ENERGY

NORMANDEAU ASSOCIATES
Environmental Consultants

Seacoast Reliability Project

Newington, NH Stone Wall Maps

SARAH D. ALLEN
No. 083
CERTIFIED WETLAND SCIENTIST

9/1/2017