



780 N. Commercial Street  
P. O. Box 330  
Manchester, NH 03105-0330

**Christopher J. Allwarden**  
Senior Counsel

603-634-2459  
christopher.allwarden@eversource.com

September 7, 2017

Debra A. Howland, Executive Director  
NH Public Utilities Commission  
21 South Fruit Street, Suite 10  
Concord, NH 03301-2429

**Re: Order No. 25,998, Docket DE 16-441 - Petition of Public Service Company of New Hampshire d/b/a Eversource Energy for License to Construct and Maintain Electric Lines, Neutral Wire and Fiber Optic Cable Over and Across the Oyster River and Little Bay in the Town of Durham, NH, and Pickering Brook and Little Bay in the Town of Newington, NH**

Dear Director Howland:

I write to inform the Commission of a planned alteration to the proposed construction by Public Service Company of New Hampshire, d/b/a Eversource Energy ("Eversource") of the Little Bay crossing which was approved by the Commission in its Order *Nisi* Granting License (Order No. 25,998, dated March 10, 2017) (the "Order") in the above docket. The Order (page 8) directs that Eversource submit to the Commission any future proposed alteration(s) to the crossing licenses granted by the Order at least 60 days prior to undertaking any such alteration. This letter is to comply with that submittal requirement.

The planned construction alteration concerns only the depth of the submarine cable installation. Specifically, Eversource intends to change the jet plow burial cover depth of the cable installation from 8 feet, to 5 feet, in the main channel of Little Bay, resulting in the cable being buried between approximately 42 inches and 60 inches depending on the location within Little Bay. This change in proposed depth of cover was the result of further assessment of the historic uses of Little Bay for vessel traffic and further geotechnical sampling, and is intended to reduce the potential amount of suspended sediments caused by the installation process. A revised Eversource Plan and Profile view drawing of the Little Bay crossing, which reflects this depth change, is enclosed (Drawing No. F10740905, revised through Revision 10, 8/17).

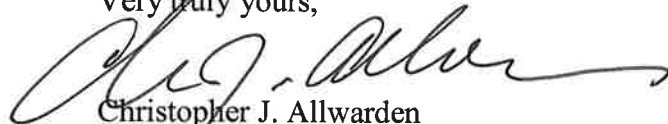
Despite this alteration, the cable installation as proposed by Eversource will still meet or exceed the National Electrical Safety Code (NESC) required clearance of 42 inches for underground direct bury cable over 50 kV, and will be sufficiently buried to be protected from tidal erosion or, where this burial depth cannot be achieved, supplemental mechanical protection will be used per the NESC to protect the cable and the public. Furthermore, the physical use and

enjoyment by the public of the waters of Little Bay will not be affected by this planned alteration in construction.

Eversource is aware that Eversource's planned alteration, as outlined in this letter, remains subject to the approval of Eversource's Seacoast Reliability Project by the New Hampshire Site Evaluation Committee, in SEC Docket 2015-04, now pending.

Thank you for your courtesy and cooperation in this matter.

Very truly yours,

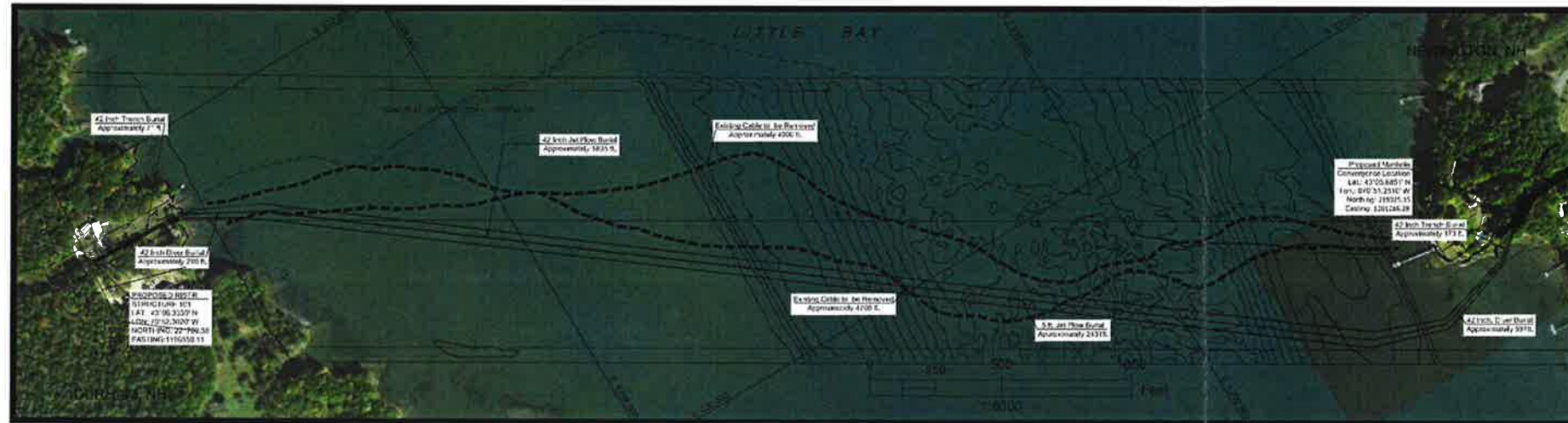
A handwritten signature in black ink, appearing to read "Chris Allwarden", written in a cursive style.

Christopher J. Allwarden  
Senior Counsel, Eversource Energy

cc: OCA

R. Knepper, NHPUC Safety Division  
R. Wyatt, NHPUC Safety Division  
J. Sperry, P.E., Eversource  
P. Monroe, Administrator, NHSEC

# PLAN VIEW



THIS PLAN FOR REFERENCE ONLY. NO REPRESENTATION OR WARRANTY IS MADE AS TO LOCATION OF BOUNDARIES OR OTHER POINTS OF REFERENCE. RIGHT OF WAY LOCATION HAS BEEN SURVEYED AND PROVIDED BY DOUCET SURVEY INC.

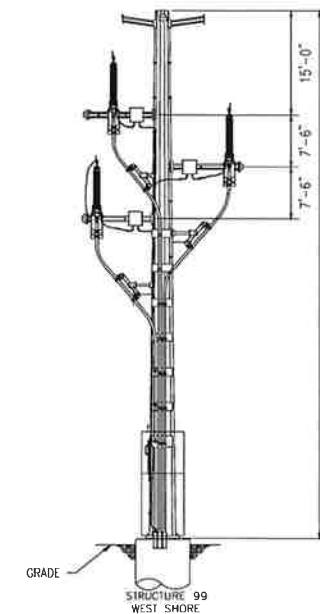
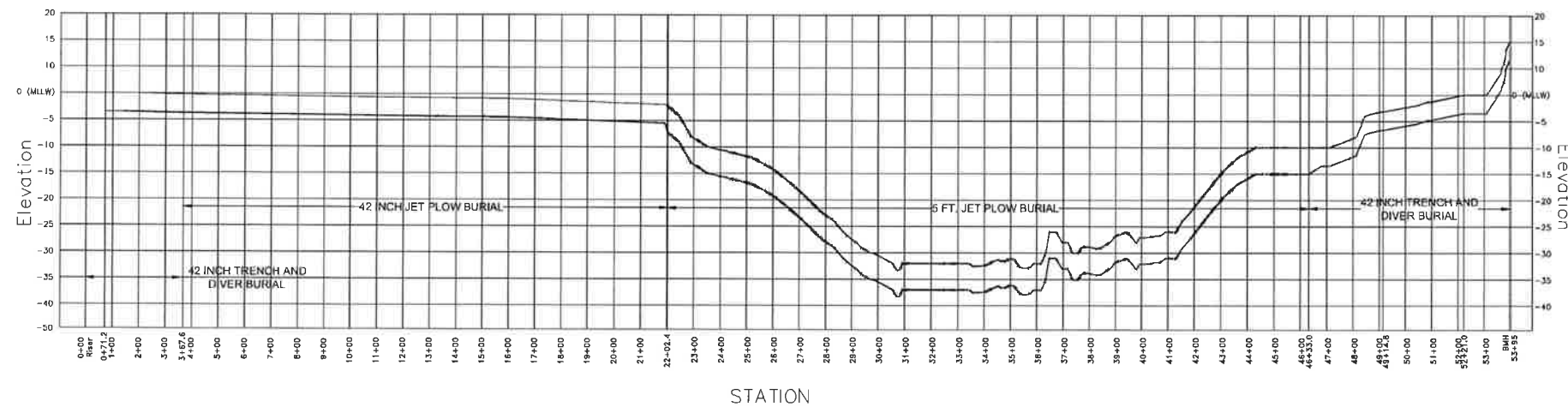


Coordinate System

State Plane, NAD 83  
2800 - New Hampshire, U.S. Feet

Vertical Datum: MLLW

# PROFILE VIEW



General Notes

PROPOSED RE-ROUTE

Magnetometer Hit

Route Centerline

Trench Burial:

Diver Burial:

5' Jet Plow Burial:

3' Jet Plow Burial:

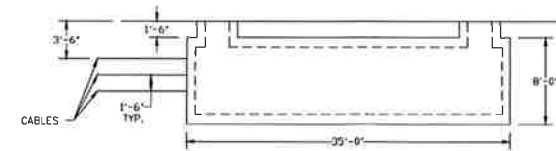
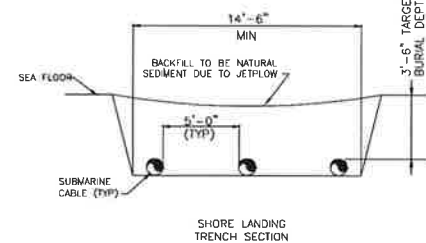
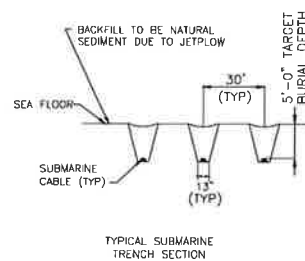
OOS Cable:

OOS Cable To Be Removed:

Cable Area:

Easement Area:

Mean High Water



HORIZONTAL SCALE: 500 FEET  
VERTICAL SCALE: 1 INCH = 25 FEET

NO.	REVISION	DATE	DRWN	CHKD	APPR
10	Revised: Jet Plow Target Depth	8/17	-	-	-
9	Revised: Border, Riser Structure & Manhole Dimensions	1/17	-	-	-

<b>EVERSOURCE ENERGY</b> DRAWN - ENGINEER - CHECKED - APPROVED -	TRANSMISSION BUSINESS SHEET 1 OF 1	9 T
	<b>F107 LINE CROSSING LITTLE BAY</b> DURHAM AND NEWINGTON, NEW HAMPSHIRE	
	SCALE AS NOTED	DATE 4/15/15