

NH Seacoast
Historic Sites
Client: State of NH
Counsel for the Public

Heritage Landscapes LLC
Preservation Planning &
Landscape Architecture

**Project Corridor
Historic Sites**
Dwg: HL1
Listed Historic Sites

Date: 31 July 2017

Map Data Description

National Register or State
Listed Historic Sites.

★ Listed Historic Site
(National or State)

— B&M Western Division
Railroad

These sites are overlaid with
the Applicant's viewshed model.

Areas with Potential Views
to Project (Applicant Model)

Town boundary

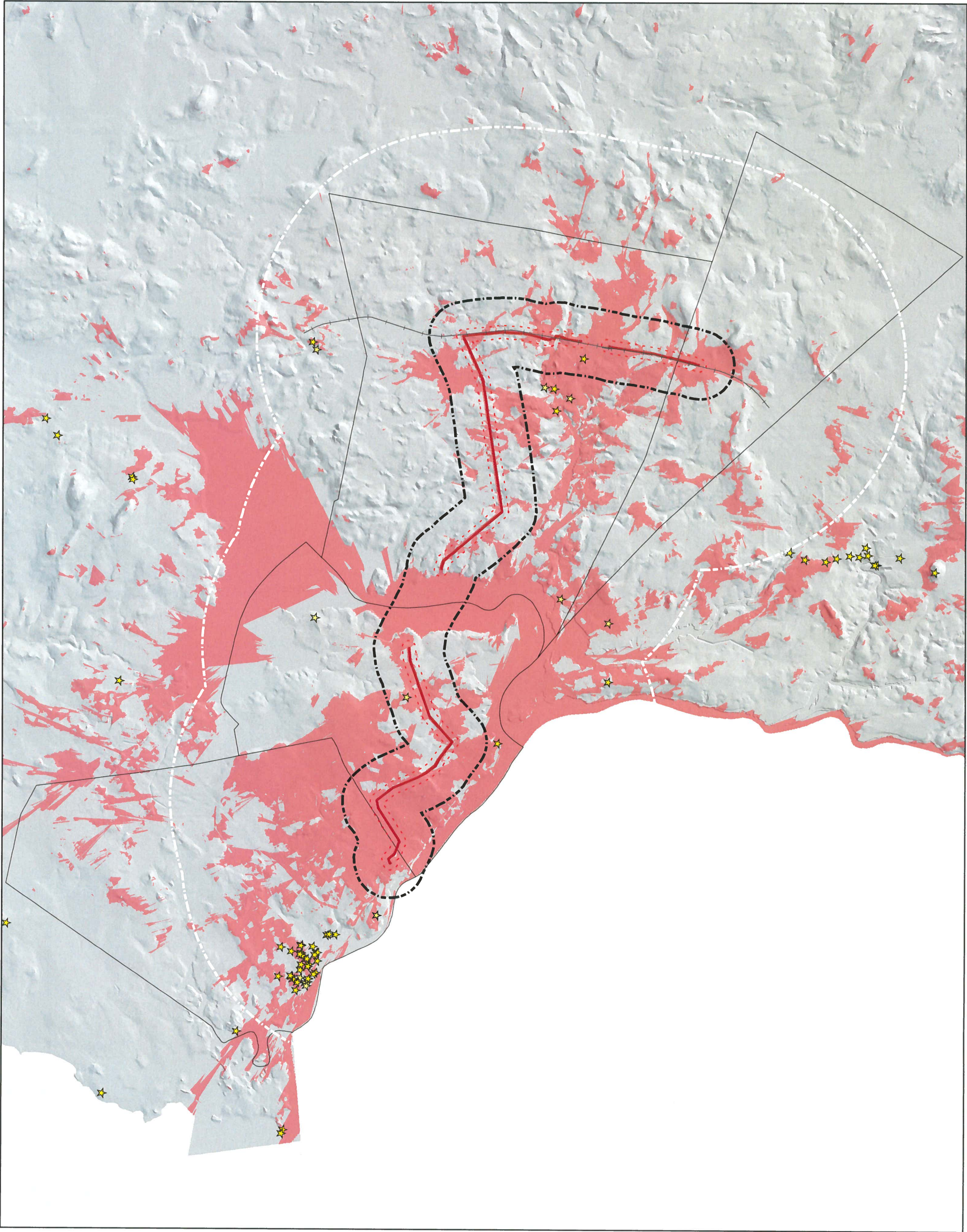
Potential Effect Boundaries

Proposed Above Ground
Project Centerline
(mapped using available
pre-Amendment data)

500 foot Potential
Direct Effect Buffer

1-Mile Corridor APE

6-Mile Corridor
Zone of Visual Impact



Sources: National Register Information System;
NH Division of Historical Resources

0 0.5 1 Miles



**NH Seacoast
Historic Sites**

Client: State of NH
Counsel for the Public

Heritage Landscapes LLC
Preservation Planning &
Landscape Architecture

**Project Corridor
Historic Sites**

Dwg: HL2

Un-Listed Historic Sites

Date: 31 July 2017

Map Data Description

Historic sites eligible for
National or State Listing, town
identified historic sites, other
named historic sites.

Other Historic Site
Identified in Town Master Plan
State GNIS Data, State
Historic and Cultural
Features Inventory

These sites are overlaid with
the Applicant's viewshed model.

Areas with Potential Views
to Project (Applicant Model)

Town boundary

Potential Effect Boundaries

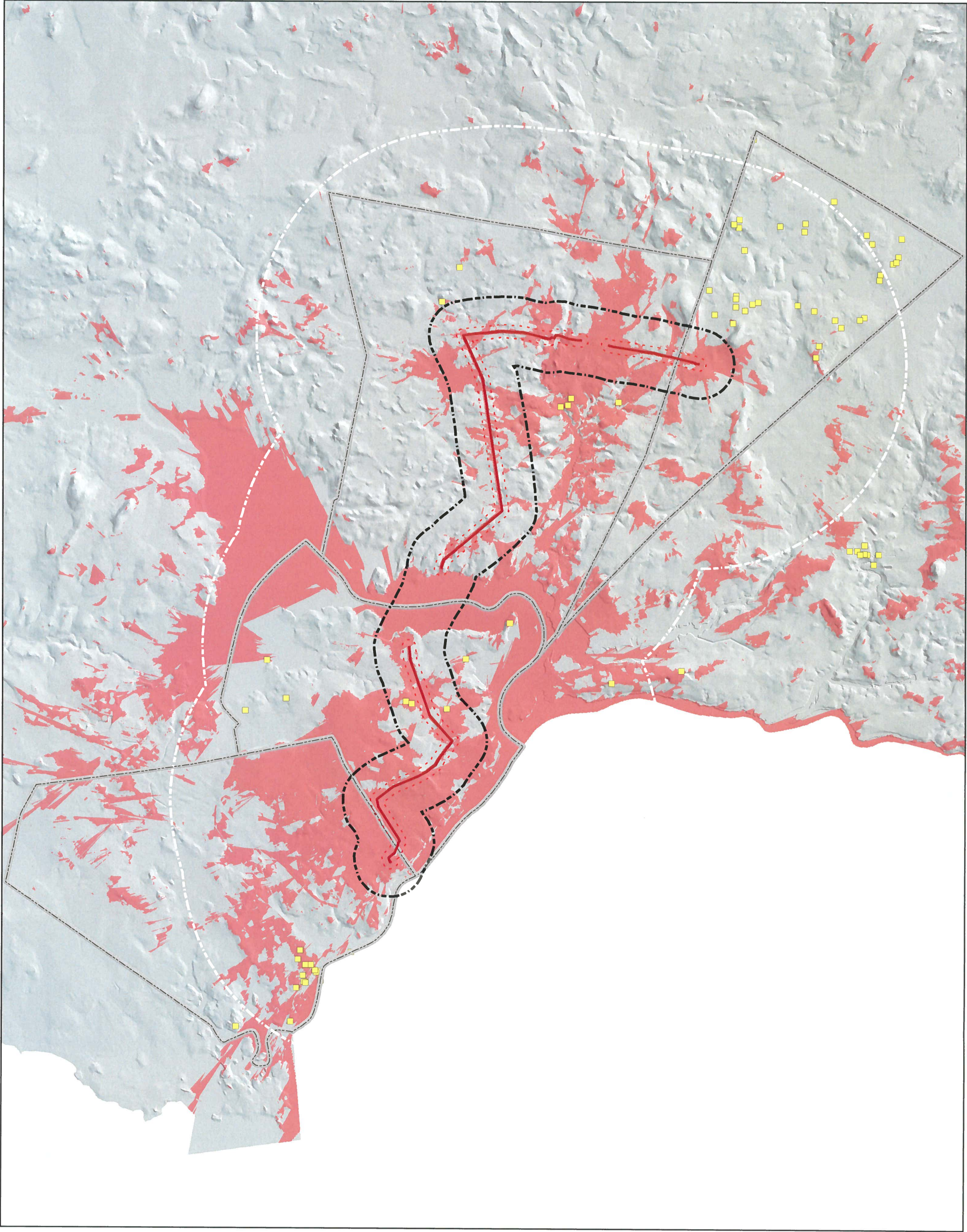
Proposed Above Ground
Project Centerline

500 foot Potential
Direct Effect Buffer

1-Mile Corridor APE

6-Mile Corridor
Zone of Visual Impact

Sources: National Register Information System,
NH Division of Historical Resources,
NH GRANIT (GNIS data and Route 16 Historic and
Cultural Features Survey), Madbury Master Plan,
Durham Master Plan



**NH Seacoast
Historic Sites**

Client: State of NH
Counsel for the Public

Heritage Landscapes LLC
Preservation Planning &
Landscape Architecture

**Project Corridor
Historic Sites**

Dwg: HL3

Stone Walls and Fences
Date: 31 July 2017

Map Data Description





Stone walls and fence locations recorded by Applicant. This map also locates historic graveyards surveyed by the NH Old Graveyards Association for 6 of 10 New Hampshire counties.

-  Historic Graveyard
-  Stone Wall
-  Stone Wall or Fence

These sites are overlaid with the Applicant's viewshed model.

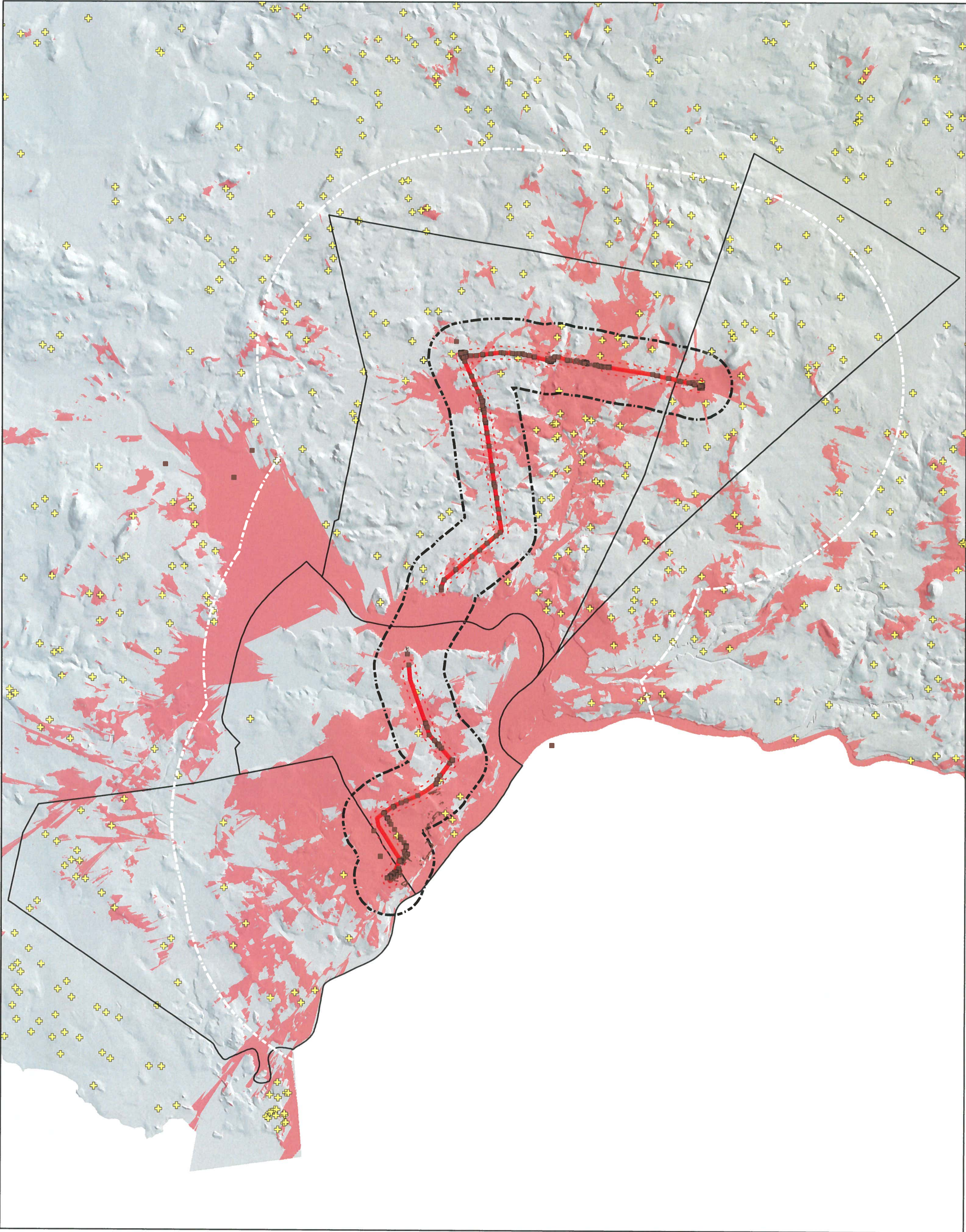
-  Areas with Potential Views to Project (Applicant Model)
-  Town boundary

Potential Effect Boundaries

-  Proposed Above Ground Project Centerline (mapped using available pre-Amendment data)
-  500 foot Potential Direct Effect Buffer
-  1-Mile Corridor APE
-  6-Mile Corridor Zone of Visual Impact

Sources: Applicant Data;
NH GRANIT (graphinfo layer)

0 0.5 1 Miles



**NH Seacoast
Historic Sites**

Client: State of NH
Counsel for the Public

Heritage Landscapes LLC
Preservation Planning &
Landscape Architecture

**Project Corridor
Historic Sites**

Dwg: HL4

Recreation, Conserved Lands
and Public Water

Date: 31 July 2017

Map Data Description

Conserved public lands are 2 acres or larger, mostly undeveloped and protected against future development. Potential overlap may exist with designated recreation areas and sites. Recreation sites mapped are those for which landscape is central to enjoyment of the activity.

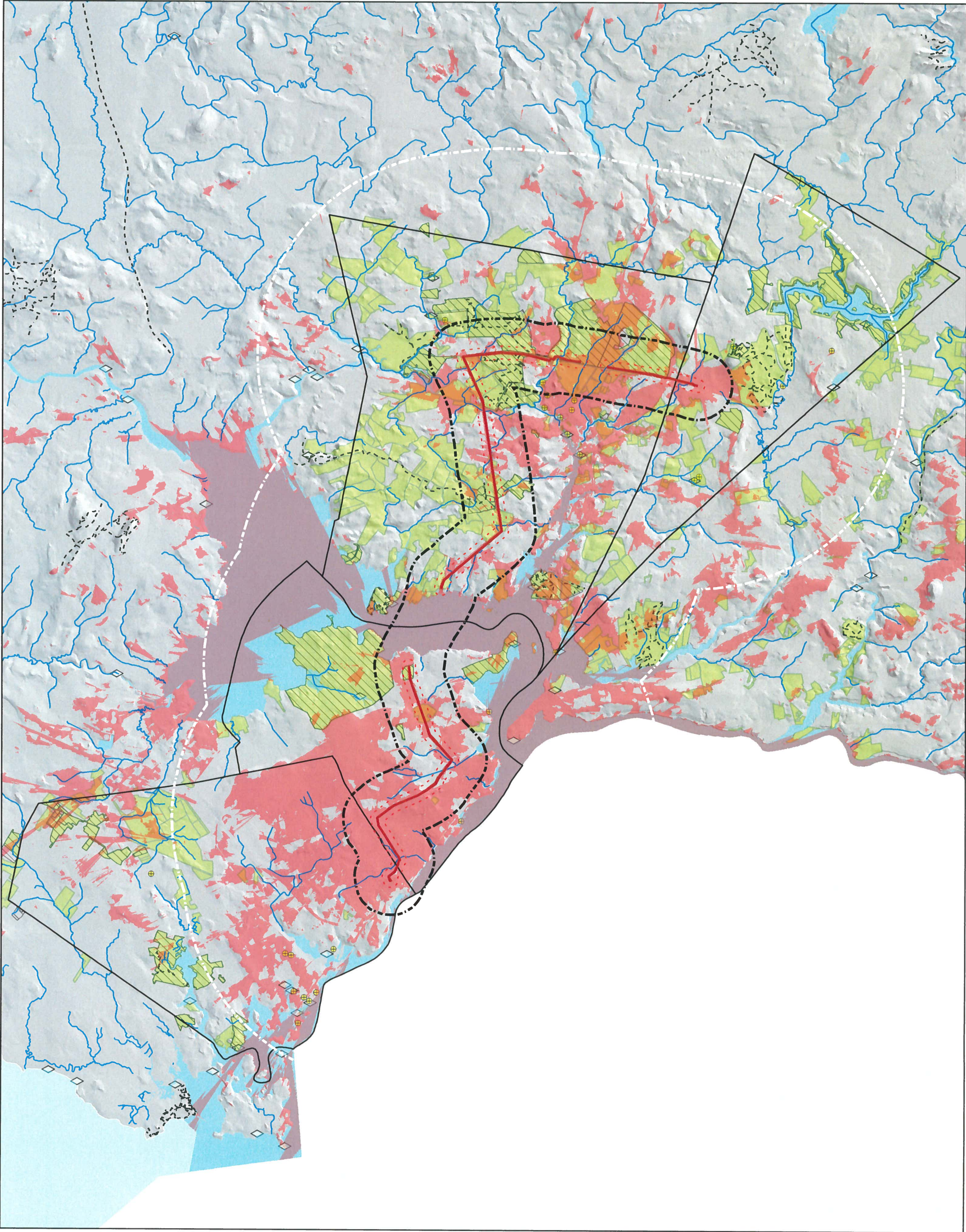
- Conserved/Public land
- Recreation Site
- Recreation Area
- Trail
- Public Waters-Linear
- NH Designated River
- Public Waters-Bodies
- Public Water Access

These sites are overlaid with the Applicant's viewshed model.

- Areas with Potential Views to Project (Applicant Model)
- Town boundary

- Potential Effect Boundaries**
- Proposed Above Ground Project Centerline (mapped using available pre-Amendment data)
 - 500 foot Potential Direct Effect Buffer
 - 1-Mile Corridor APE
 - 6-Mile Corridor Zone of Visual Impact

Sources: NH GRANIT



**NH Seacoast
Historic Sites**

Client: State of NH
Counsel for the Public

Heritage Landscapes LLC
Preservation Planning &
Landscape Architecture

**Project Corridor
Historic Sites**

Dwg: HL5

Scenic Byways, Roads

Date: 31 July 2017

Map Data Description

Local scenic roads and state
Scenic and Cultural Byways
are depicted along with trails
for hiking and other uses.

— Scenic-Cultural Byway or
Scenic Road

These sites are overlaid with
the Applicant's viewshed model.

■ Areas with Potential Views
to Project (Applicant Model)

□ Town boundary

Potential Effect Boundaries
— Proposed Above Ground
Project Centerline
(mapped using available
pre-Amendment data)

— 500 foot Potential
Direct Effect Buffer

— 1-Mile Corridor APE

— 6-Mile Corridor
Zone of Visual Impact

Sources: NH GRANIT, Town of Madbury Master Plan

0 0.5 1 Miles

