

Content may not reflect National Geographic's current map policy. Sources: National Geographic, Esri, Delorme, HERE, UNER, WCMC, USGS, NASA, ESA, METI, NRCAN, GEBCO, NOAA, increment P Corp.

**NH Seacoast
Historic Sites**
Client: State of NH
Counsel for the Public

Heritage Landscapes LLC
Preservation Planning &
Landscape Architecture

**Town Level
Historic Sites**

Dwg: HL-Madbury
Date: 16 June 2017

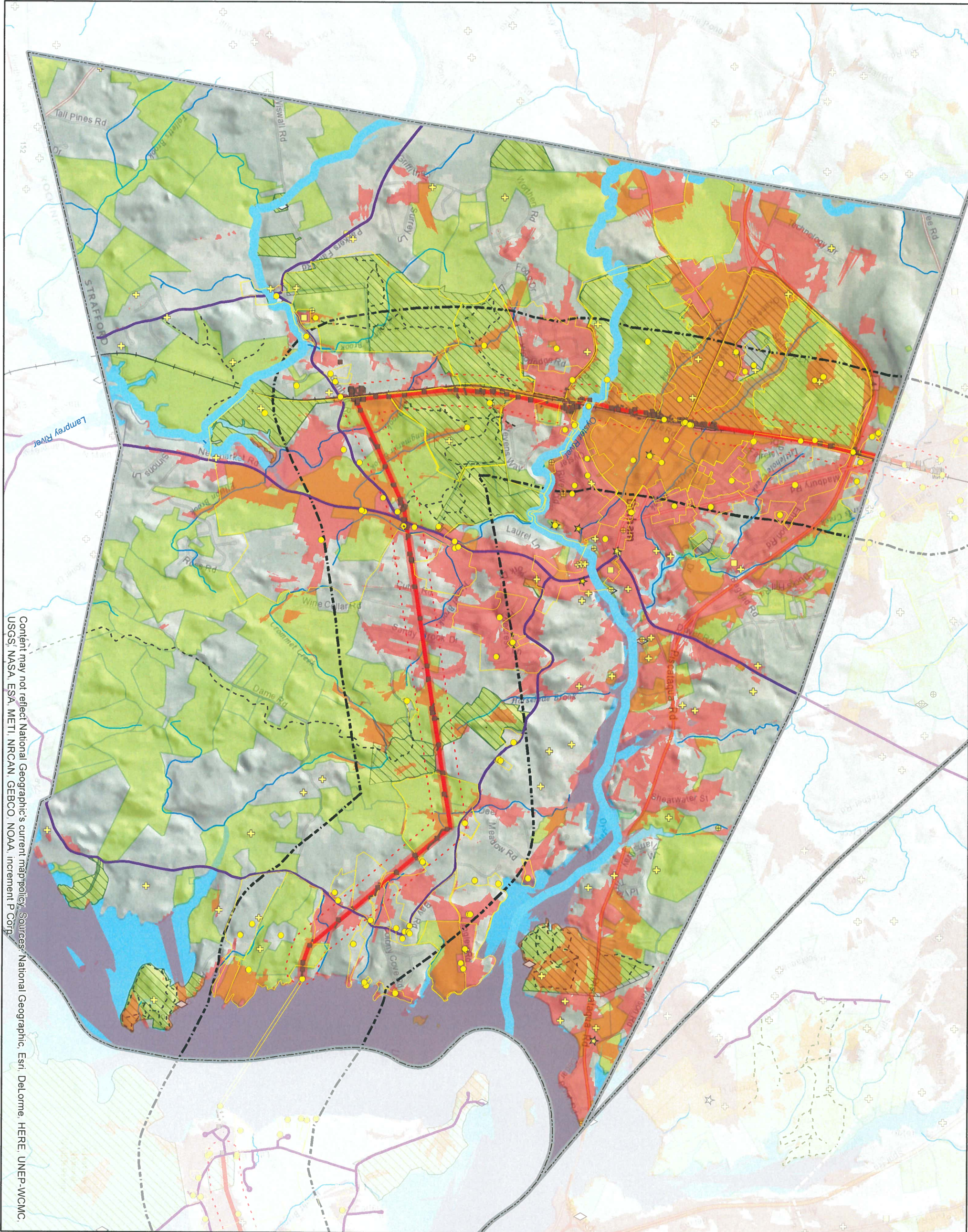
Map Key

- Town boundary
- Areas with Potential Views to Project (Applicant Model)
- Listed Historic Site (National or State)
- Other Historic Site Identified in Town Master Plan State GNIS Data, State Historic and Cultural Features Inventory
- Applicant Identified Historic Site
- Historic Parcel (Applicant Identified)
- Historic Graveyard
- Stone Wall or Fence (Applicant Identified)
- Railroad
- Conserved/Public land
- Recreation Site
- Recreation Area
- NH Scenic-Cultural Byway or Local Scenic Road
- Trail
- Public Waters-Bodies
- Public Waters-Linear
- NH Designated River
- Public Water Access
- Proposed SRP Centerline Above ground

Potential Effect Boundaries

- 500 foot Potential Direct Effect Buffer
- 1-Mile Corridor APE
- 6-Mile Corridor Zone of Visual Impact

0 0.275 0.55 Miles



Content may not reflect National Geographic's current map policy. Sources: National Geographic, Esri, DeLorme, HERE, UNEP-WCMC, USGS, NASA, ESA, METI, NRCAN, GEBCO, NOAA, Increment P Corp.

**NH Seacoast
Historic Sites**
Client: State of NH
Counsel for the Public

Heritage Landscapes LLC
Preservation Planning &
Landscape Architecture

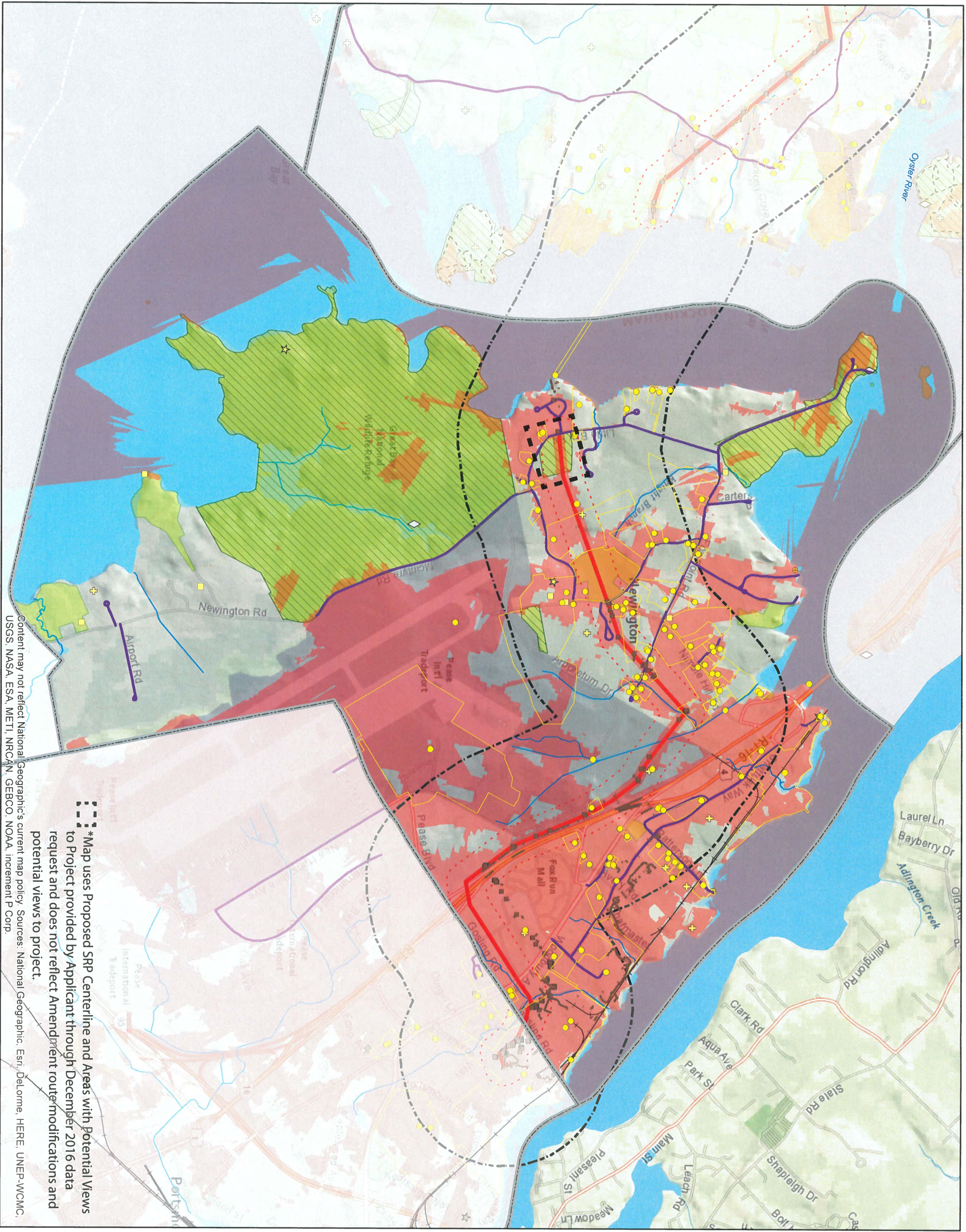
**Town Level
Historic Sites**

Dwg: HL-Durham
Date: 16 June 2017

Map Key

- Town boundary
- Areas with Potential Views to Project (Applicant Model)
- Listed Historic Site (National or State)
- Other Historic Site Identified in Town Master Plan State GNIS Data, State Historic and Cultural Features Inventory
- Applicant Identified Historic Site
- Historic Parcel (Applicant Identified)
- Historic Graveyard
- Stone Wall or Fence (Applicant Identified)
- Railroad
- Conserved/Public land
- Recreation Site
- Recreation Area
- NH Scenic-Cultural Byway or Local Scenic Road
- Trail
- Public Waters-Bodies
- Public Waters-Linear
- NH Designated River
- Public Water Access
- Proposed SRP Centerline Above ground
- Potential Effect Boundaries
- 500 foot Potential Direct Effect Buffer
- 1-Mile Corridor APE
- 6-Mile Corridor Zone of Visual Impact

0 0.25 0.5 Miles



Content may not reflect National Geographic's current map policy. Sources: National Geographic, Esri, Delorme, HERE, UNEP-WCMC, USGS, NASA, ESA, METI, NRCAN, GEBCO, NOAA, Increment, P Corp.

***Map uses Proposed SRP Centerline and Areas with Potential Views to Project provided by Applicant through December 2016 data request and does not reflect Amendment route modifications and potential views to project.**

	Town boundary
	Areas with Potential Views to Project (Applicant Model) *
	Listed Historic Site (National or State)
	Other Historic Site Identified in Town Master Plan State GNIS Data, State Historic and Cultural Features Inventory
	Applicant Identified Historic Site
	Historic Parcel (Applicant Identified)
	Historic Graveyard
	Stone Wall or Fence (Applicant Identified)
	Railroad
	Conserved/Public land
	Recreation Site
	Recreation Area
	NH Scenic-Cultural Byway or Local Scenic Road
	Trail
	Public Waters-Bodies
	Public Waters-Linear
	NH Designated River
	Public Water Access
	Proposed SRP Centerline
	Above ground *
	Potential Effect Boundaries
	500 foot Potential Direct Effect Buffer
	1-Mile Corridor APE
	6-Mile Corridor Zone of Visual Impact

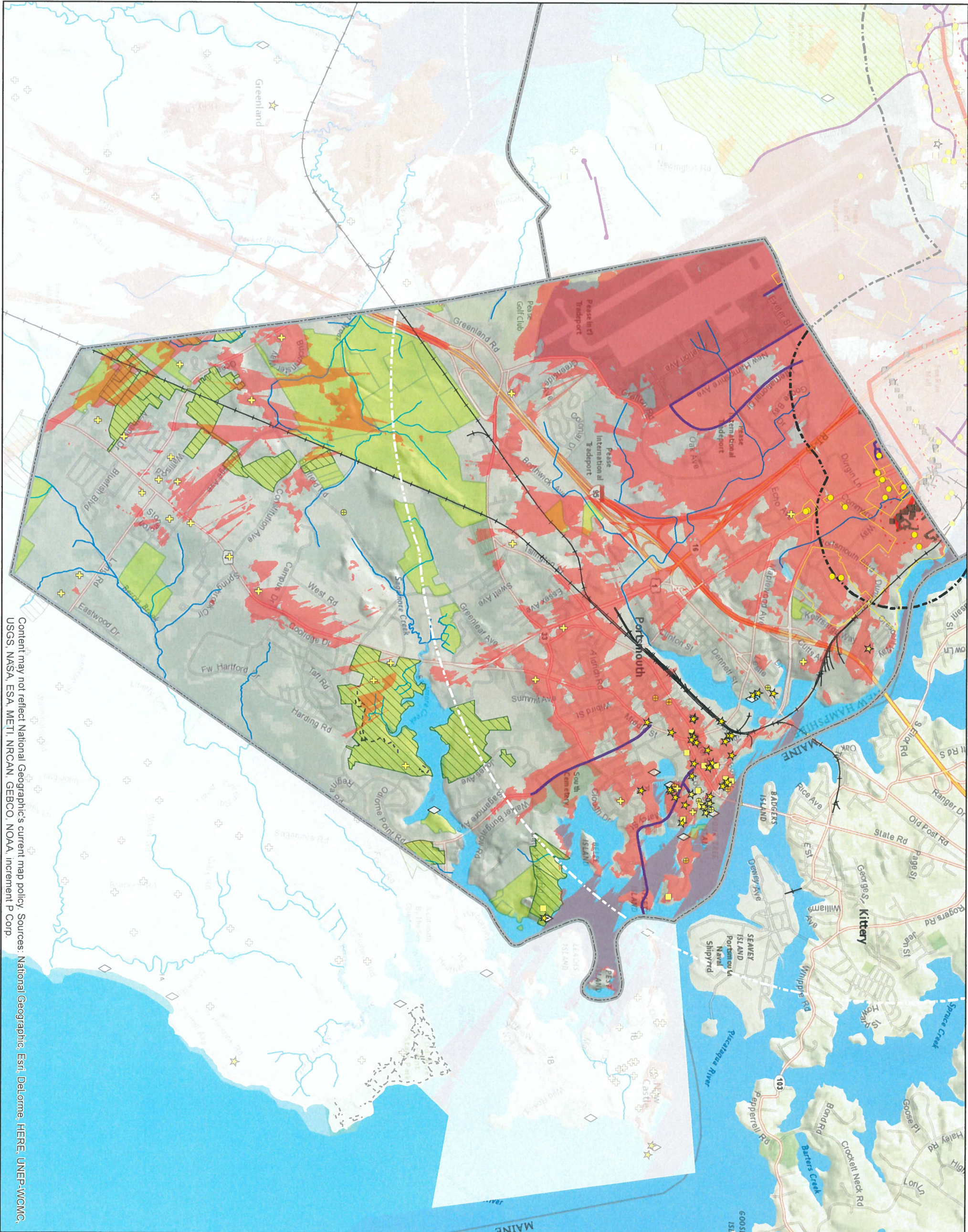


NH Seacoast Historic Sites
 Client: State of NH
 Counsel for the Public

Heritage Landscapes LLC
 Preservation Planning &
 Landscape Architecture

Town Level Historic Sites

Dwg: HL-Newington
 Date: 16 June 2017



Content may not reflect National Geographic's current map policy. Sources: National Geographic, Esri, DeLorme, HERE, UNEP-WCMC, USGS, NASA, ESA, METI, NRCAN, GEBCO, NOAA, increment P Corp.

NH Seacoast Historic Sites
 Client: State of NH
 Counsel for the Public

Heritage Landscapes LLC
 Preservation Planning &
 Landscape Architecture

Town Level Historic Sites

Dwg: HL-Portsmouth

Date: 16 June 2017

Map Key

- Town boundary
- Areas with Potential Views to Project (Applicant Model)
- Listed Historic Site (National or State)
- Other Historic Site Identified in Town Master Plan State GNIS Data, State Historic and Cultural Features Inventory
- Applicant Identified Historic Site
- Historic Parcel (Applicant Identified)
- Historic Graveyard
- Stone Wall or Fence (Applicant Identified)
- Railroad
- Conserved/Public land
- Recreation Site
- NH Scenic-Cultural Byway or Local Scenic Road
- Trail
- Public Waters-Bodies
- Public Waters-Linear
- NH Designated River
- Public Water Access
- Proposed SRP Centerline Above ground
- Potential Effect Boundaries
 - 500 foot Potential
 - Direct Effect Buffer
 - 1-Mile Corridor APE
 - 6-Mile Corridor
 - Zone of Visual Impact

0 0.275 0.55 Miles