

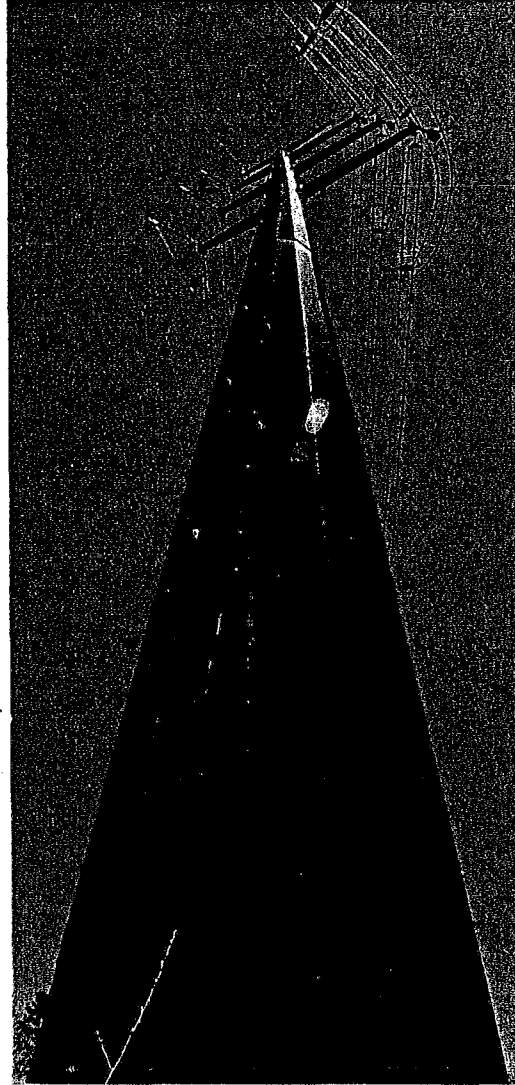
Electrical Transmission Lines

The Town supports improvements to electrical transmission infrastructure, outside the Town's residential district, that would help to attract electrical generating plants to Newington's industrial waterfront.

Sustainable Development

The basic framework of Newington's Zoning Ordinance, like others throughout New Hampshire, descends from one that was written to guide development in Euclid, Ohio of the 1920's. This garden suburb model is no longer appropriate or useful. The Planning Board recommends that Newington's land use regulations and building code be revamped in order to encourage sustainable residential

development, i.e. that is more energy efficient and environmentally friendly.



Natural Gas

has several advantages over coal and oil when used to fuel electrical generating plants. It burns much cleaner, discharges far less greenhouse gasses, and there are abundant supplies in the Canadian Maritime Provinces. Newington should encourage the construction of gas-fueled generating plants by designating such land uses as among the highest and best along the town's three-mile stretch of industrial waterfront that runs from Gosling Road to Bloody Point.