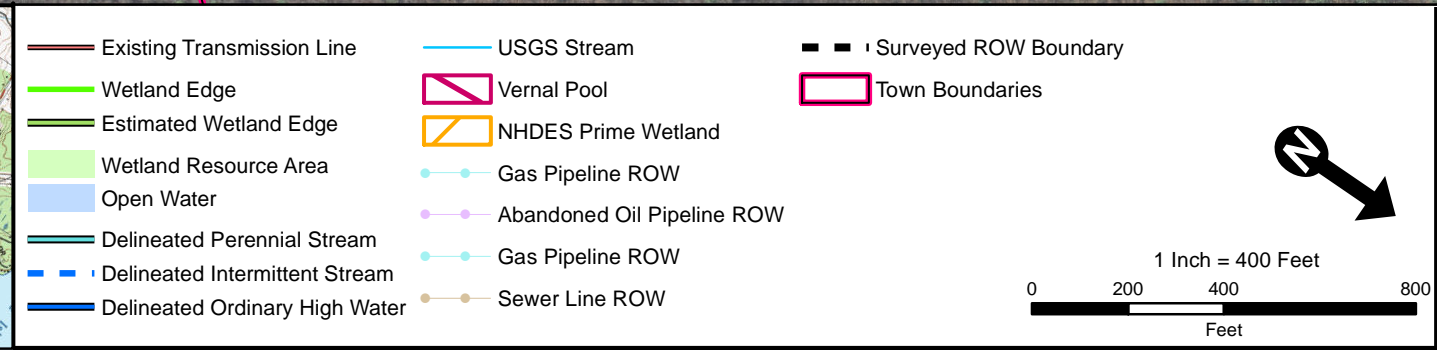
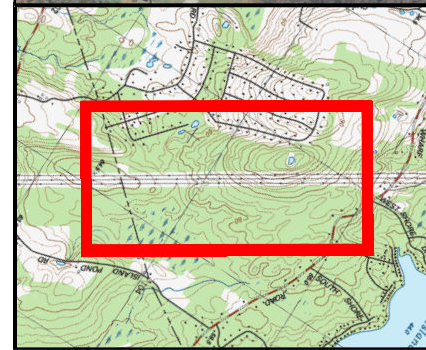


Appendix E

Existing Conditions Mapping



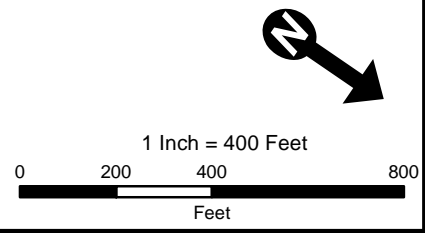


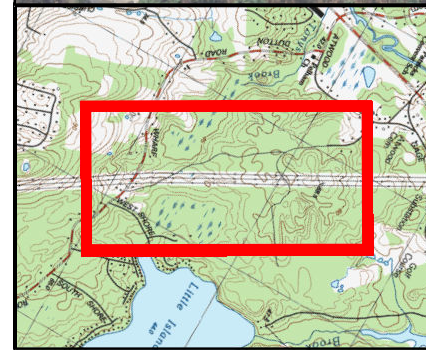
Existing Conditions
Merrimack Valley Reliability Project
Tewksbury 22A Substation MA to
Scobie Pond 345 kV Substation NH

Page 1 of 16

Source:
NGRID, Black & Veatch, VHB
Beals & Thomas, Eversource, Normandeau

Date: 7/13/2015





Existing Transmission Line	USGS Stream	Surveyed ROW Boundary
Wetland Edge	Vernal Pool	Town Boundaries
Estimated Wetland Edge	NHDES Prime Wetland	
Wetland Resource Area	Gas Pipeline ROW	
Open Water	Abandoned Oil Pipeline ROW	
Delineated Perennial Stream	Gas Pipeline ROW	
Delineated Intermittent Stream	Sewer Line ROW	
Delineated Ordinary High Water		

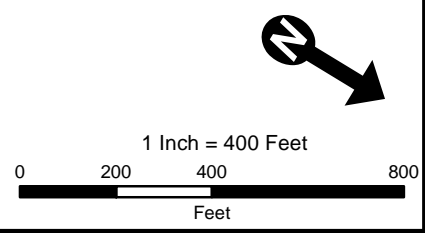
Existing Conditions
Merrimack Valley Reliability Project
Tewksbury 22A Substation MA to
Scobie Pond 345 kV Substation NH

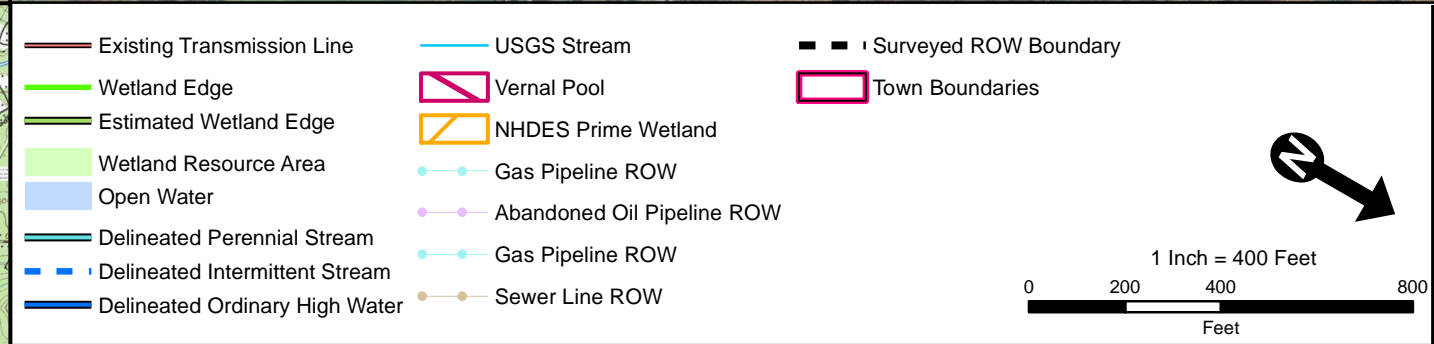
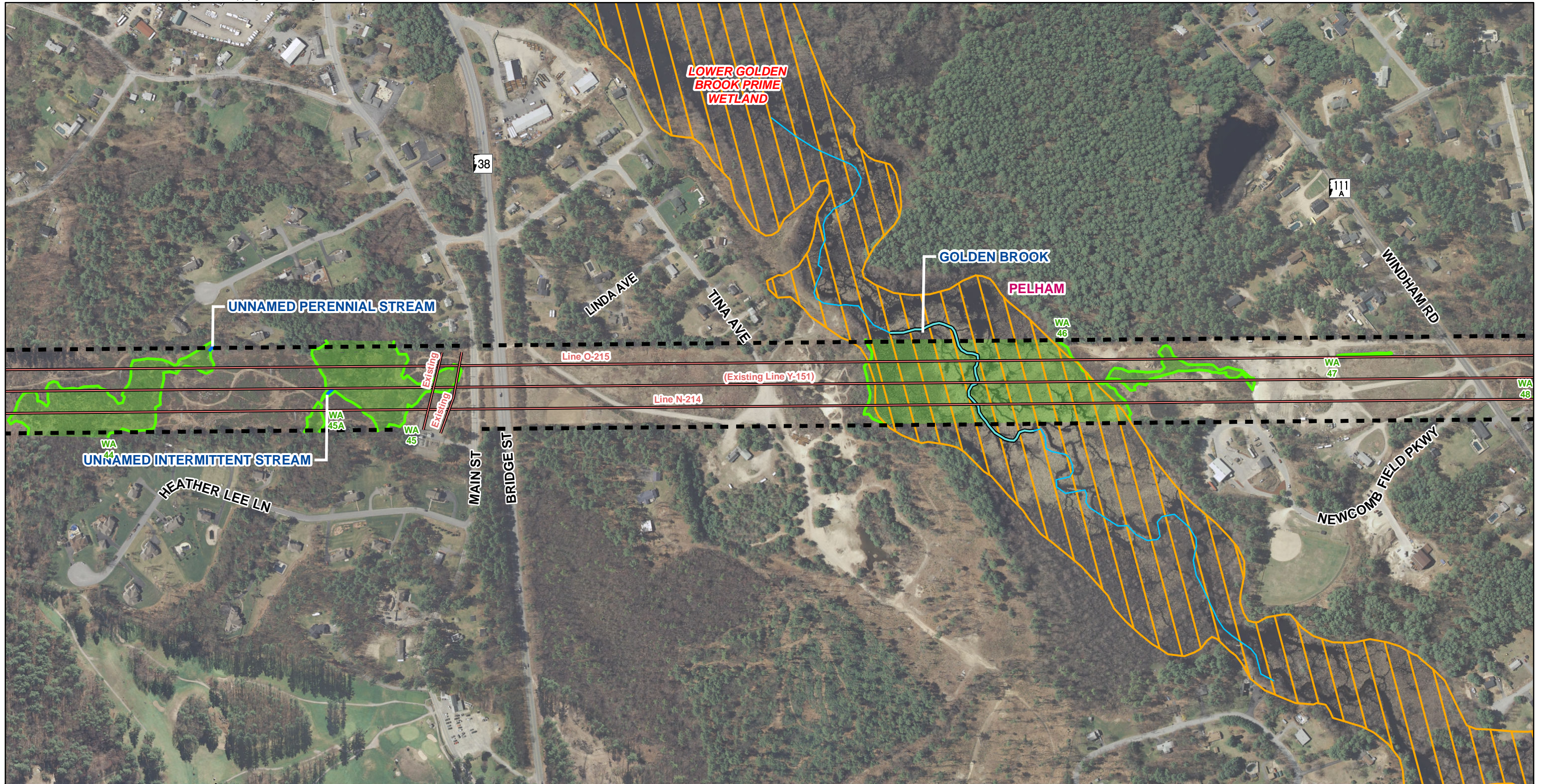
Page 2 of 16

Source:
NGRID, Black & Veatch, VHB
Beals & Thomas, Eversource, Normandeau

Date: 7/13/2015

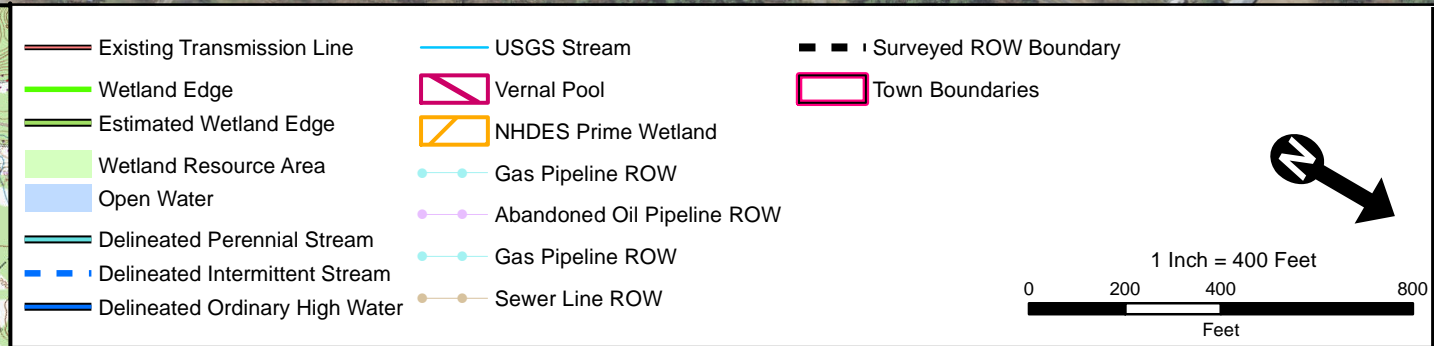
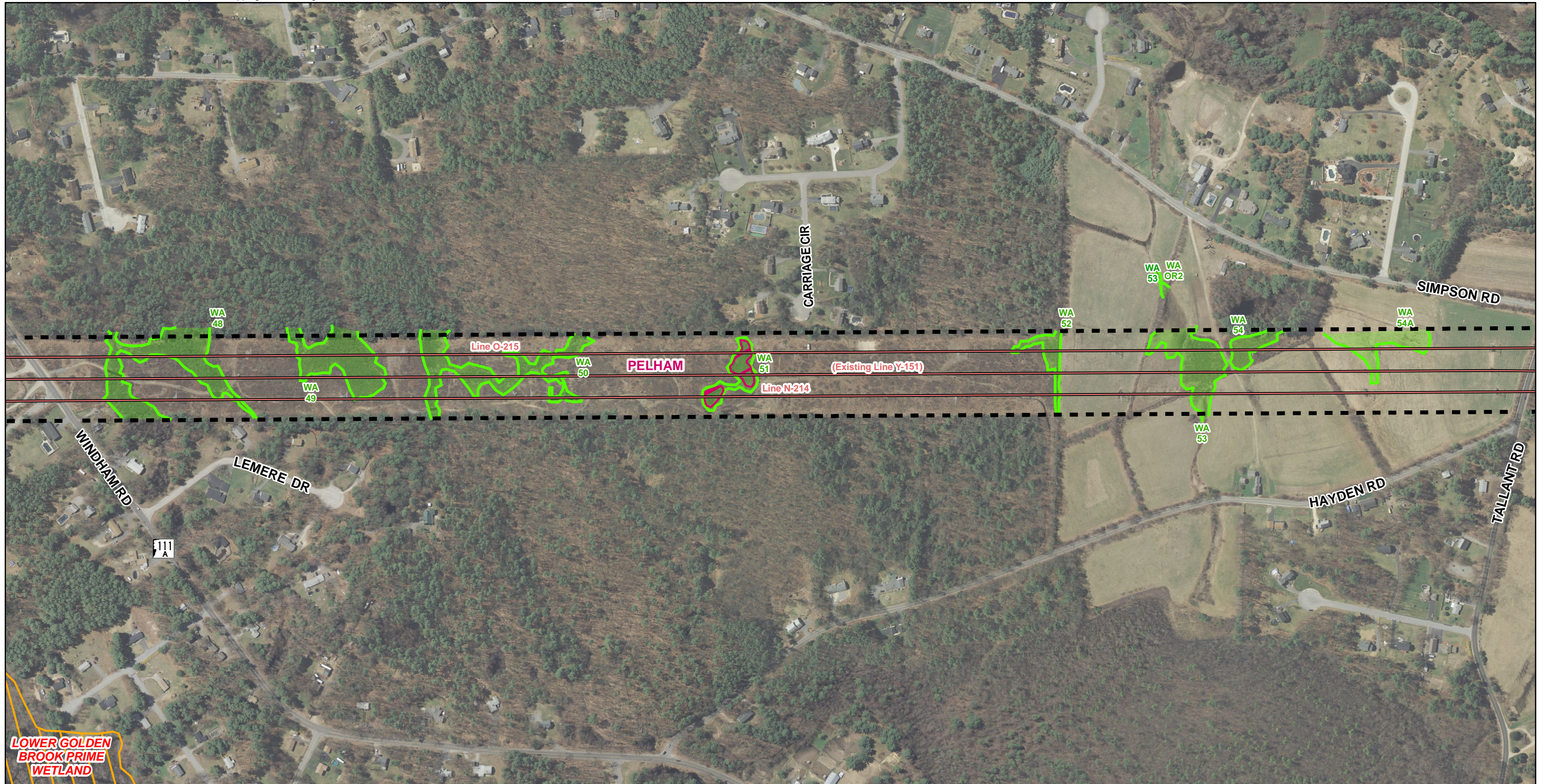






Existing Conditions
 Merrimack Valley Reliability Project
 Tewksbury 22A Substation MA to
 Scobie Pond 345 kV Substation NH





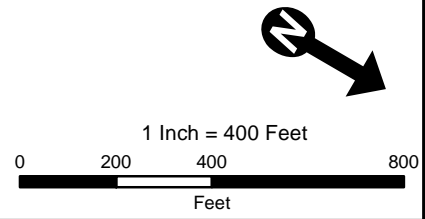
Existing Conditions
Merrimack Valley Reliability Project
Tewksbury 22A Substation MA to
Scobie Pond 345 kV Substation NH

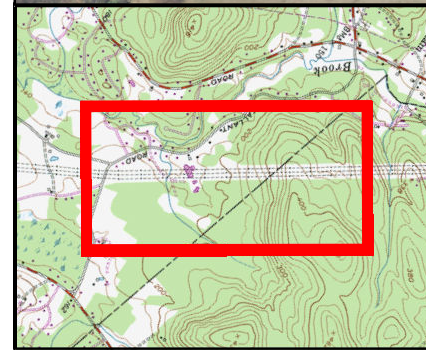
Page 4 of 16

Source:
NGRID, Black & Veatch, VHB
Beals & Thomas, Eversource, Normandeau

Date: 7/13/2015







Existing Transmission Line	USGS Stream	Surveyed ROW Boundary
Wetland Edge	Vernal Pool	Town Boundaries
Estimated Wetland Edge	NHDES Prime Wetland	
Wetland Resource Area	Gas Pipeline ROW	
Open Water	Abandoned Oil Pipeline ROW	
Delineated Perennial Stream	Gas Pipeline ROW	
Delineated Intermittent Stream	Sewer Line ROW	
Delineated Ordinary High Water		

1 Inch = 400 Feet

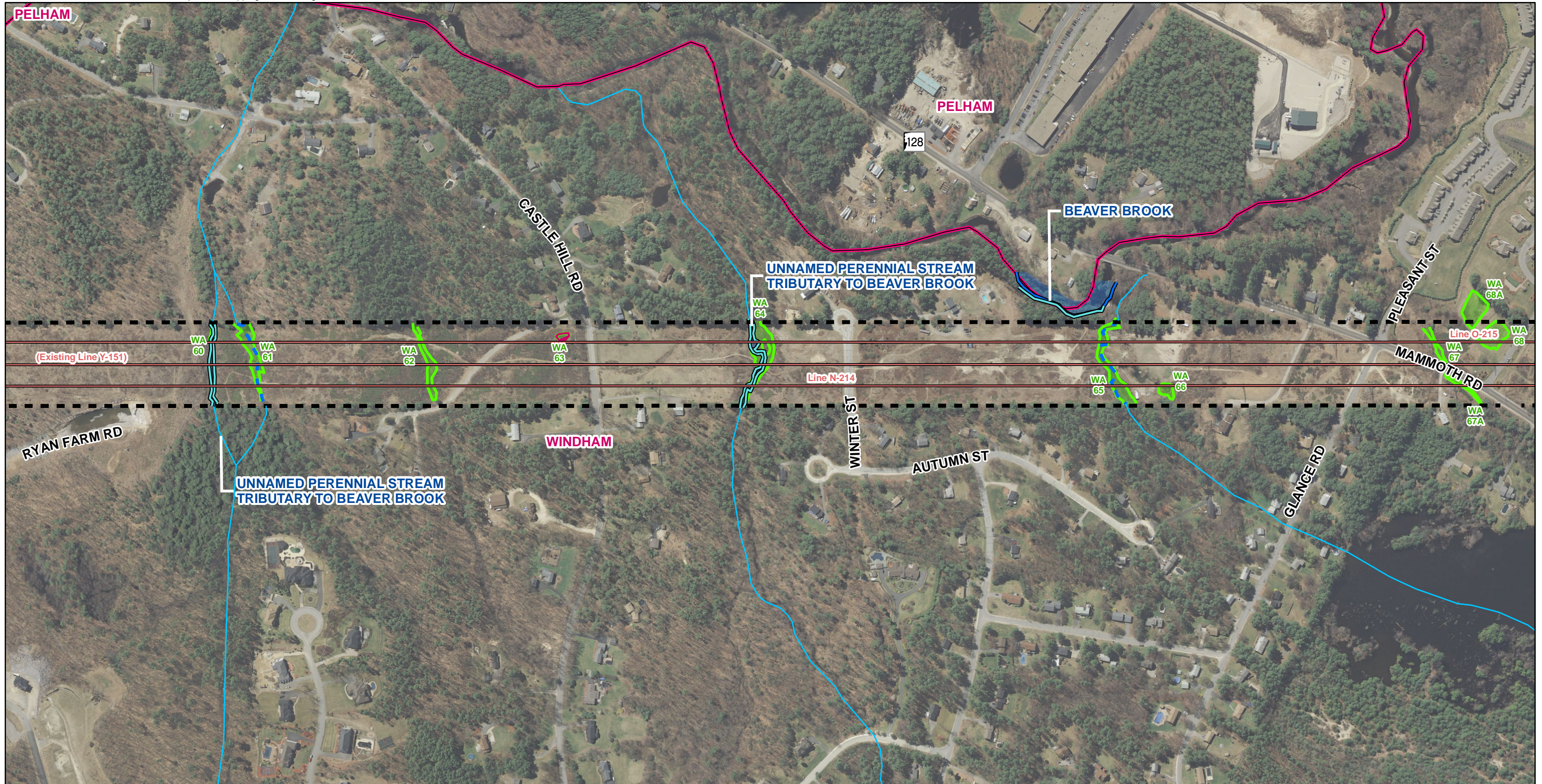
0 200 400 800 Feet

Existing Conditions
Merrimack Valley Reliability Project
Tewksbury 22A Substation MA to
Scobie Pond 345 kV Substation NH

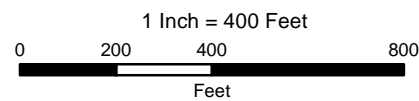
Page 5 of 16

Source:
NGRID, Black & Veatch, VHB
Beals & Thomas, Eversource, Normandeau

Date: 7/13/2015

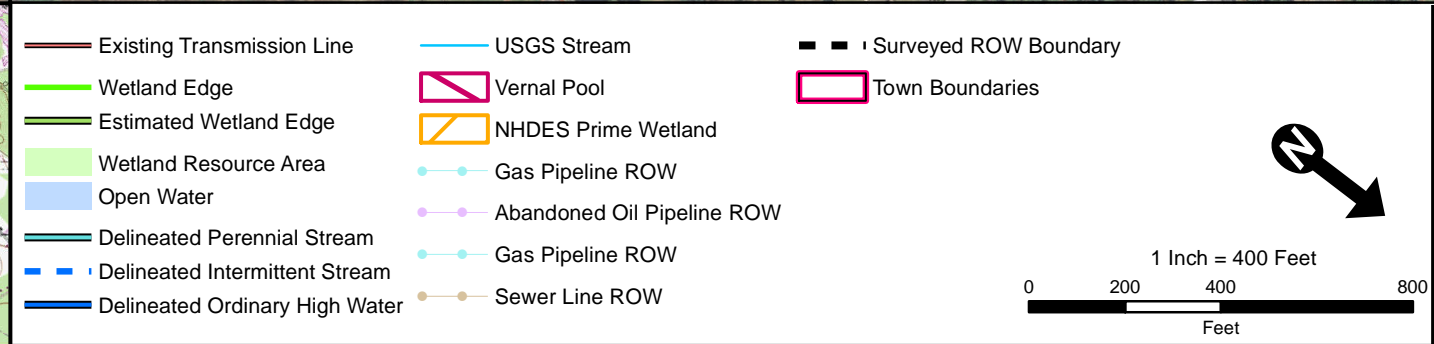
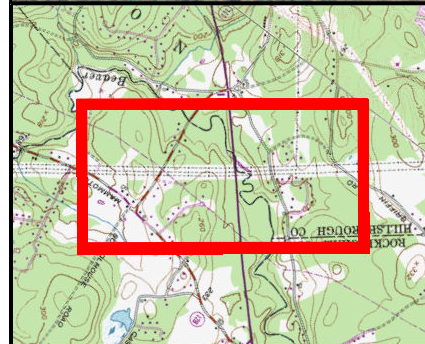
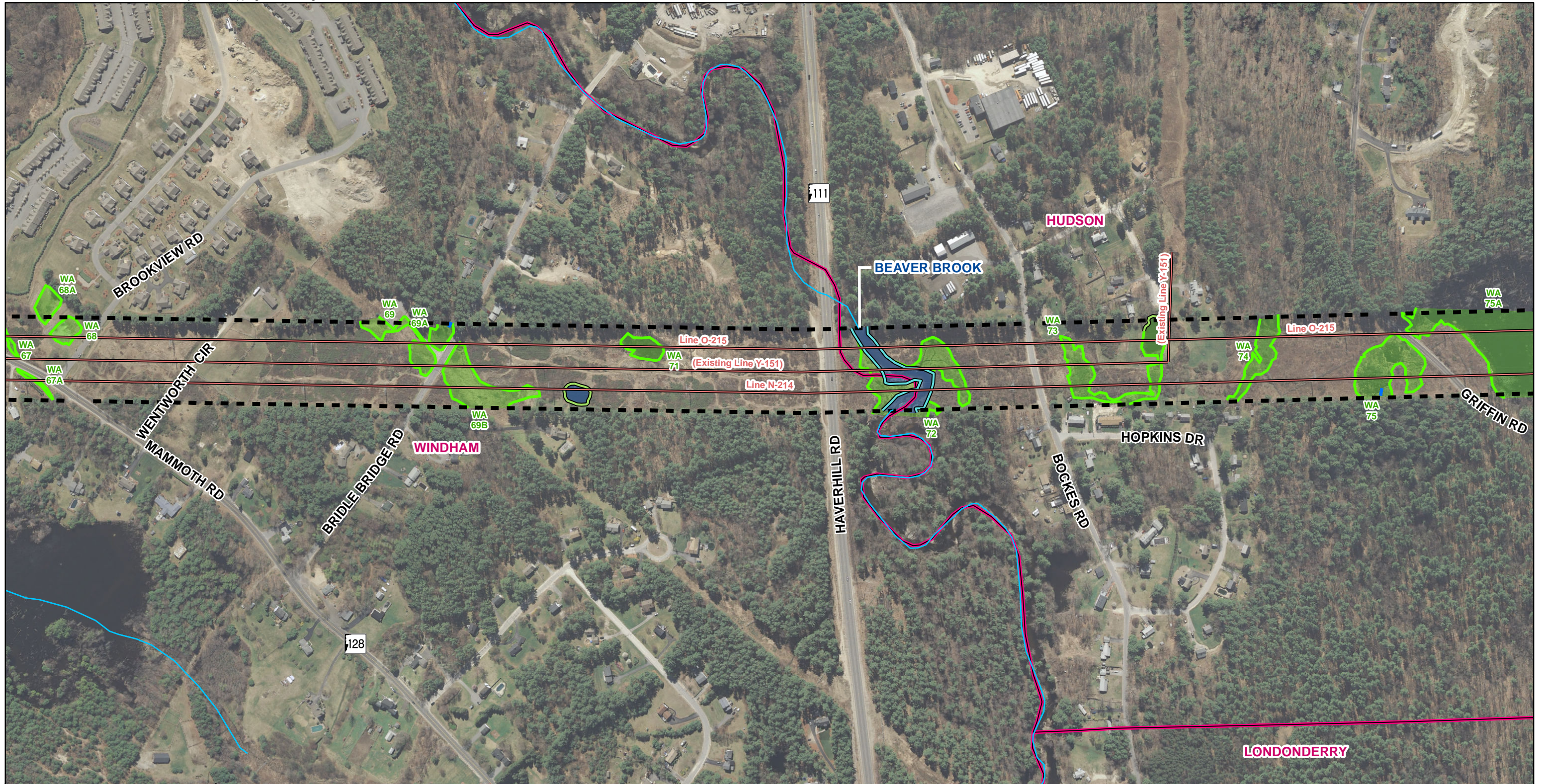


- | | | |
|--------------------------------|----------------------------|-----------------------|
| Existing Transmission Line | USGS Stream | Surveyed ROW Boundary |
| Wetland Edge | Vernal Pool | Town Boundaries |
| Estimated Wetland Edge | NHDES Prime Wetland | |
| Wetland Resource Area | Gas Pipeline ROW | |
| Open Water | Abandoned Oil Pipeline ROW | |
| Delineated Perennial Stream | Gas Pipeline ROW | |
| Delineated Intermittent Stream | Sewer Line ROW | |
| Delineated Ordinary High Water | | |



Existing Conditions
 Merrimack Valley Reliability Project
 Tewksbury 22A Substation MA to
 Scobie Pond 345 kV Substation NH





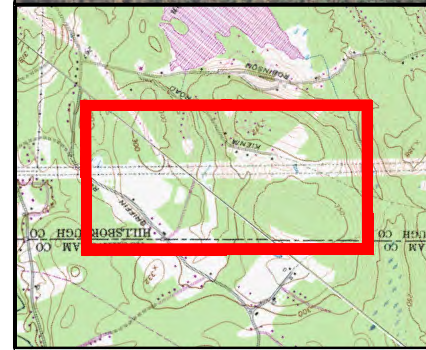
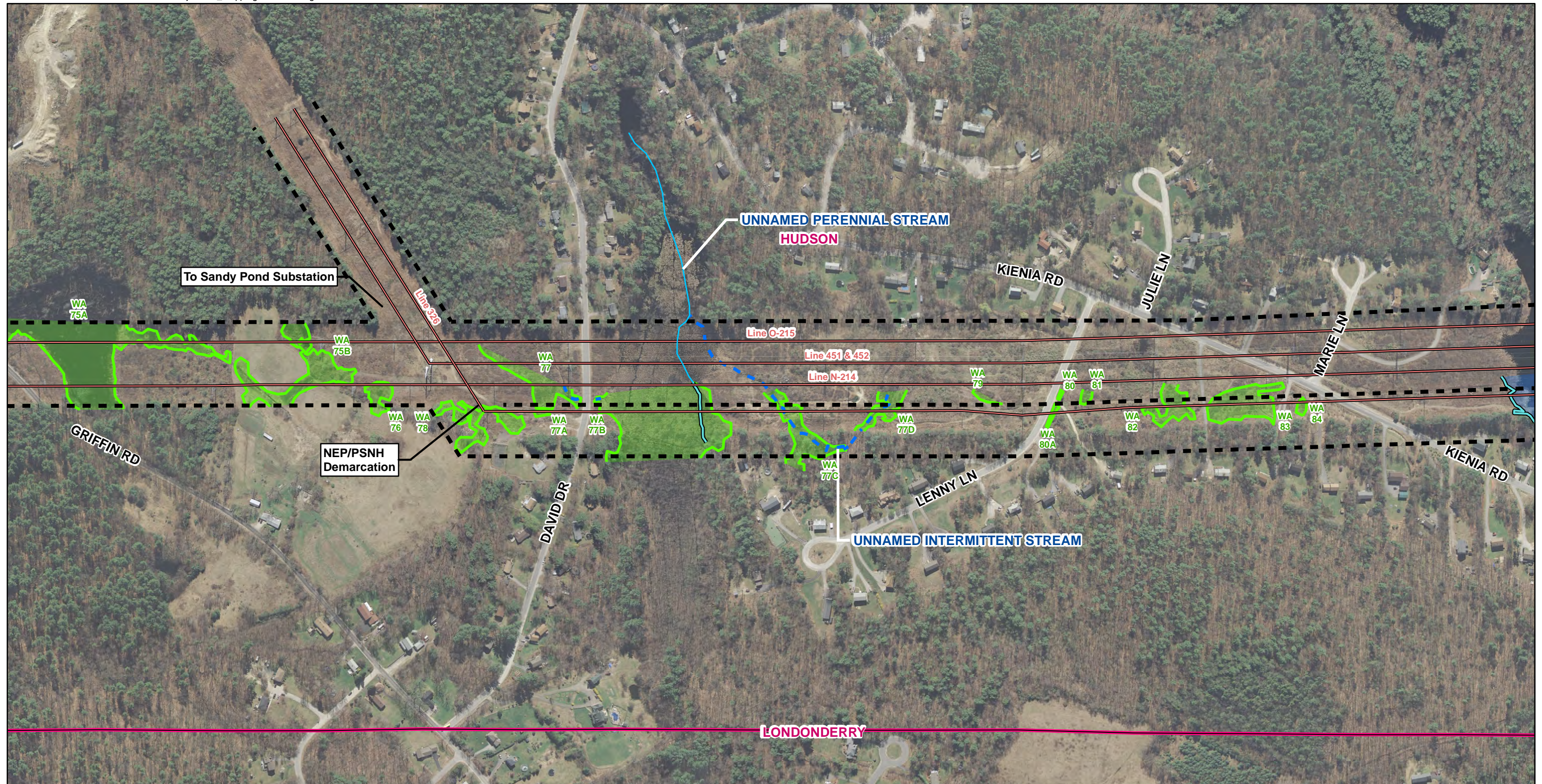
Existing Conditions
Merrimack Valley Reliability Project
Tewksbury 22A Substation MA to
Scobie Pond 345 kV Substation NH

Page 7 of 16

Source:
NGRID, Black & Veatch, VHB
Beals & Thomas, Eversource, Normandeau

Date: 7/13/2015





Existing Transmission Line	USGS Stream	Surveyed ROW Boundary
Wetland Edge	Vernal Pool	Town Boundaries
Estimated Wetland Edge	NHDES Prime Wetland	
Wetland Resource Area	Gas Pipeline ROW	
Open Water	Abandoned Oil Pipeline ROW	
Delineated Perennial Stream	Gas Pipeline ROW	
Delineated Intermittent Stream	Sewer Line ROW	
Delineated Ordinary High Water		

1 Inch = 400 Feet

0 200 400 800
Feet

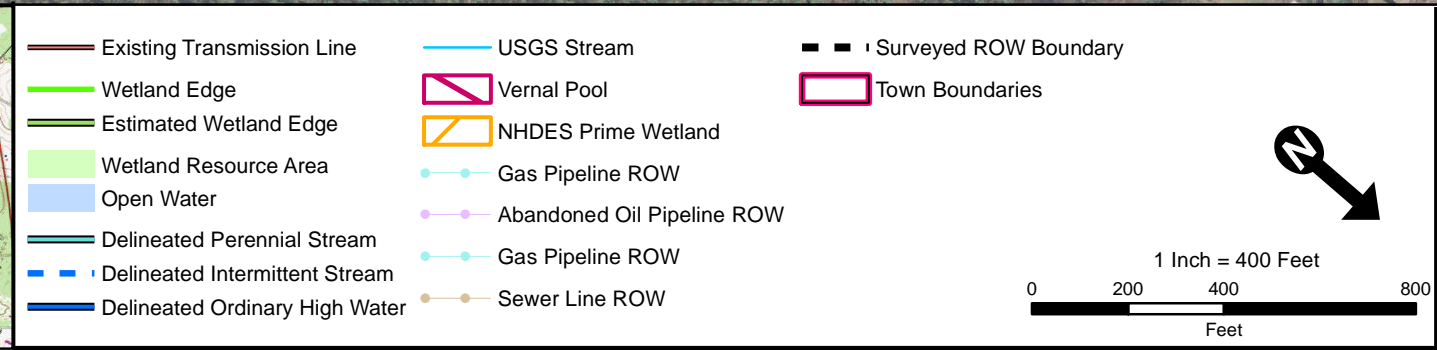
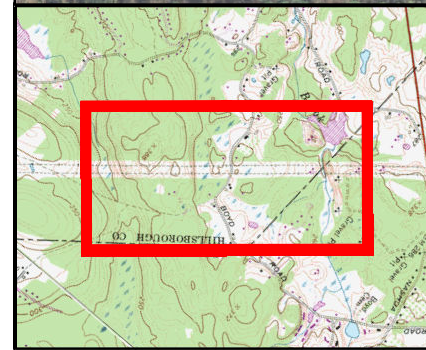
Existing Conditions
Merrimack Valley Reliability Project
Tewksbury 22A Substation MA to
Scobie Pond 345 kV Substation NH

Page 8 of 16

Source:
 NGRID, Black & Veatch, VHB
 Beals & Thomas, Eversource, Normandeau

Date: 7/13/2015

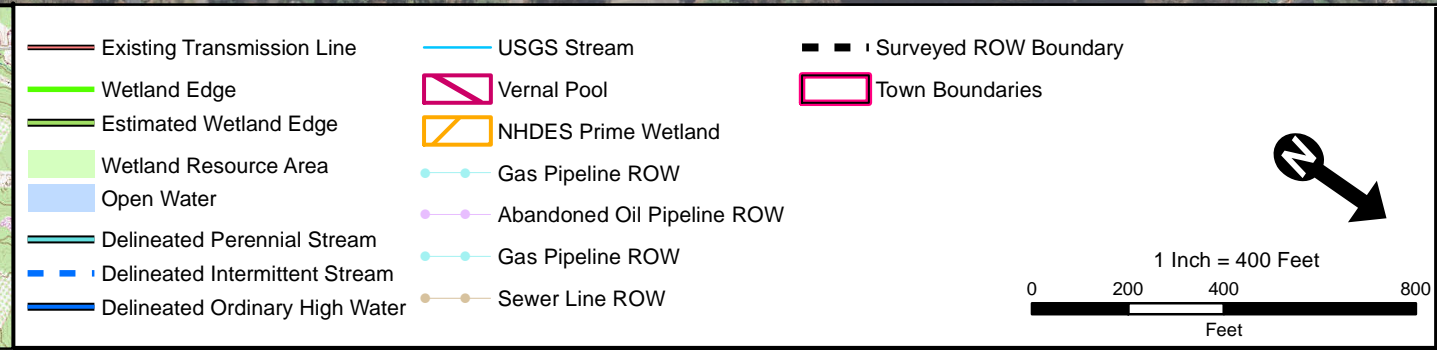
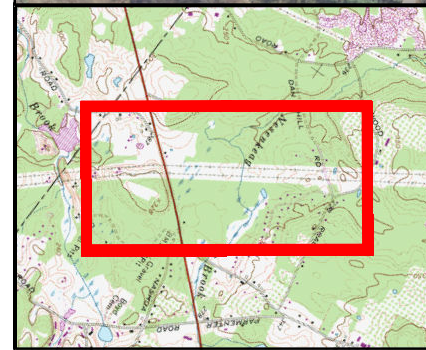
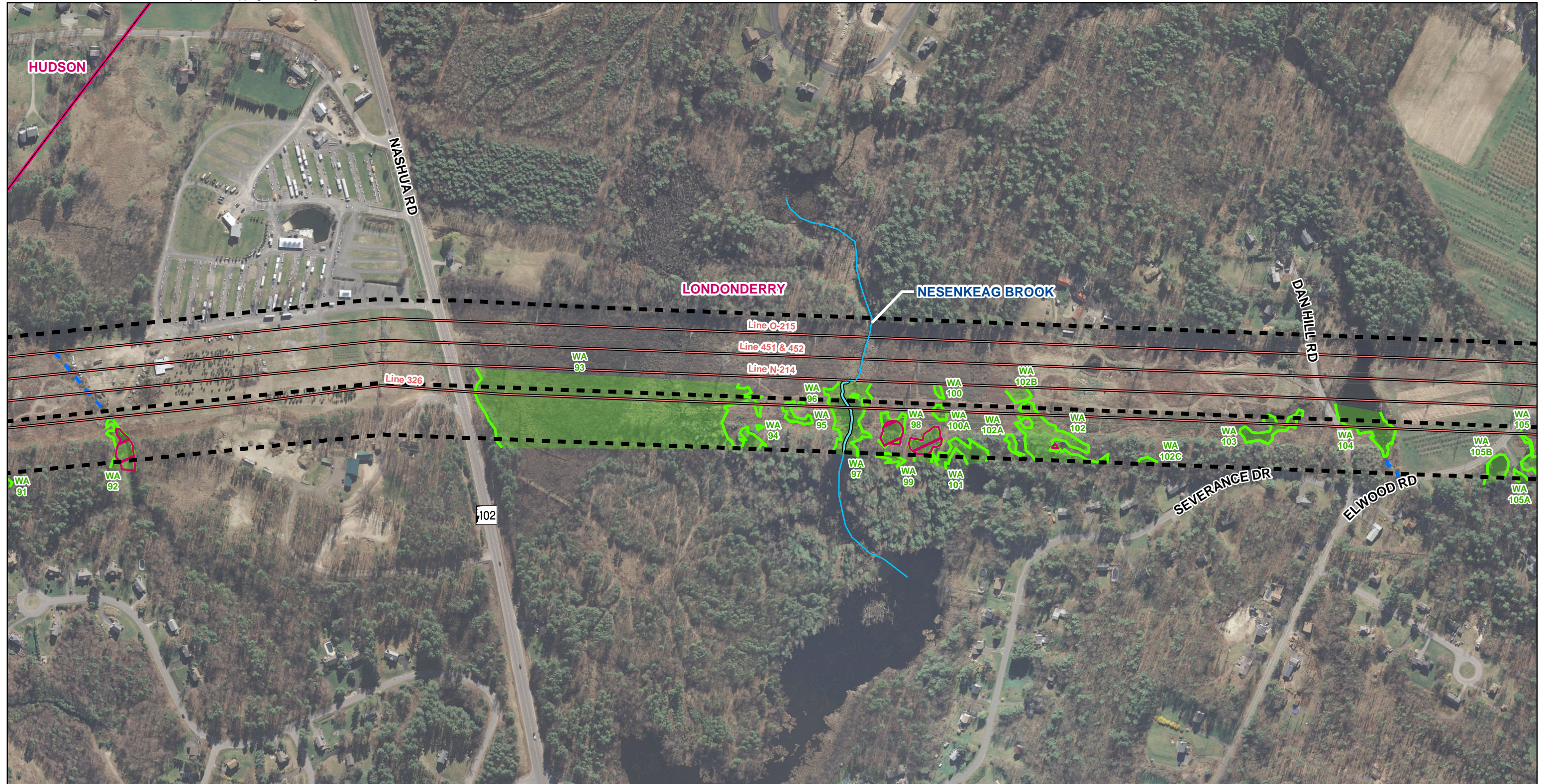


Existing Conditions
Merrimack Valley Reliability Project
Tewksbury 22A Substation MA to
Scobie Pond 345 kV Substation NH

Source:
NGRID, Black & Veatch, VHB
Beals & Thomas, Eversource, Normandeau

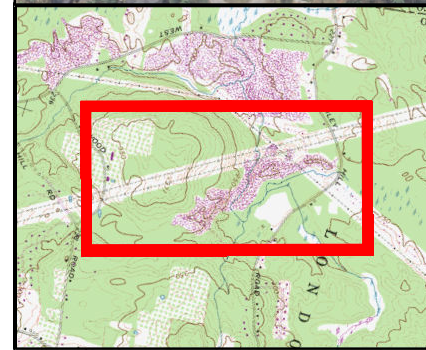
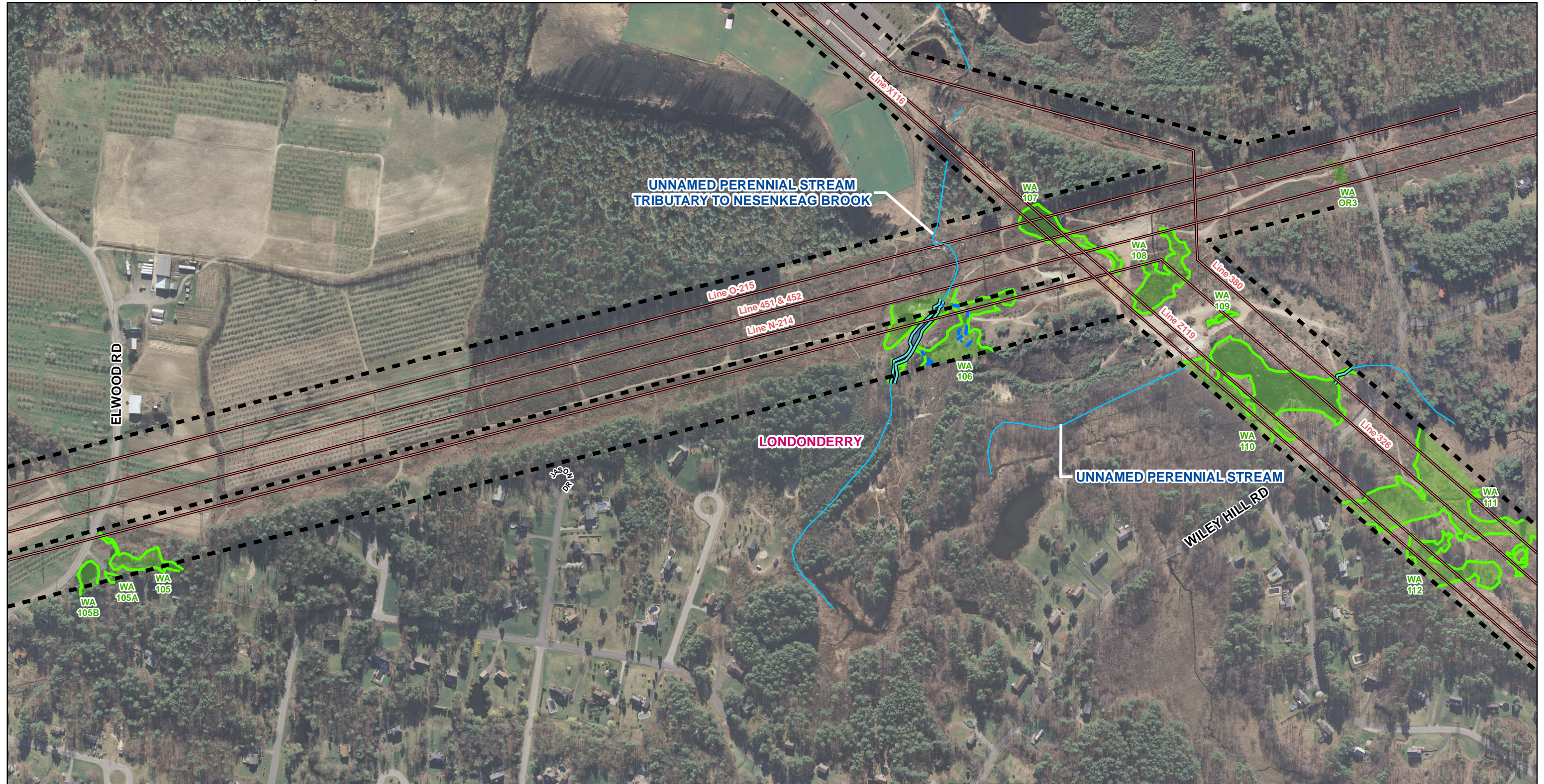




Existing Conditions
 Merrimack Valley Reliability Project
 Tewksbury 22A Substation MA to
 Scobie Pond 345 kV Substation NH

Source:
 NGRID, Black & Veatch, VHB
 Beals & Thomas, Eversource, Normandeau





Existing Transmission Line	USGS Stream	Surveyed ROW Boundary
Wetland Edge	Vernal Pool	Town Boundaries
Estimated Wetland Edge	NHDES Prime Wetland	
Wetland Resource Area	Gas Pipeline ROW	
Open Water	Abandoned Oil Pipeline ROW	
Delineated Perennial Stream	Gas Pipeline ROW	
Delineated Intermittent Stream	Sewer Line ROW	
Delineated Ordinary High Water		

1 Inch = 400 Feet

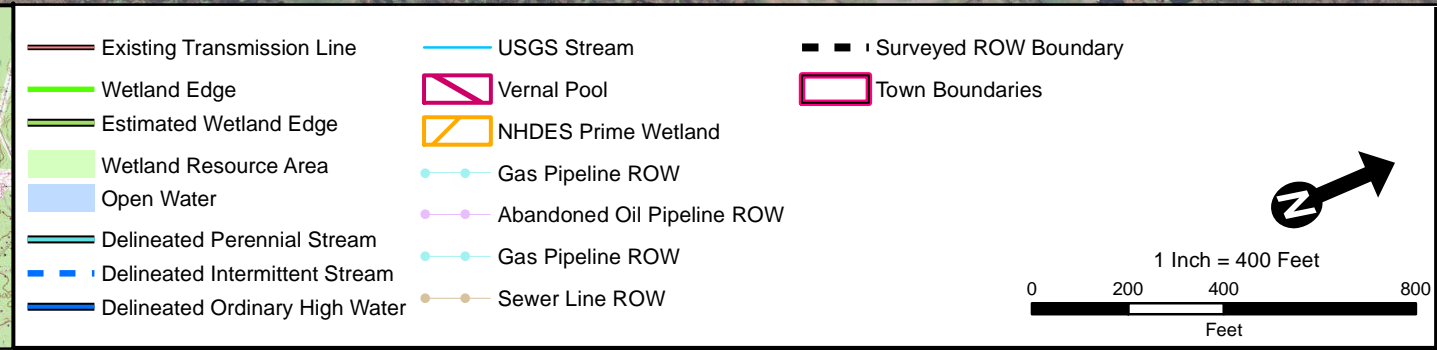
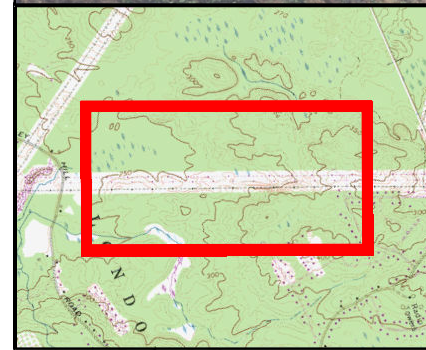
0 200 400 800
Feet

Existing Conditions
Merrimack Valley Reliability Project
Tewksbury 22A Substation MA to
Scobie Pond 345 kV Substation NH

Page 11 of 16

Source:
 NGRID, Black & Veatch, VHB
 Beals & Thomas, Eversource, Normandeau

Date: 7/13/2015



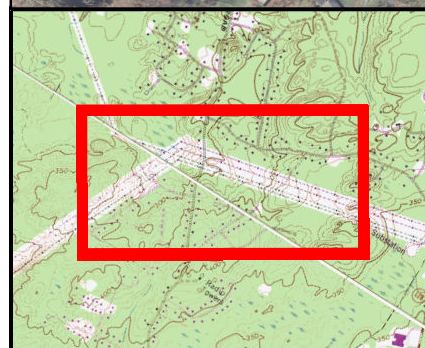
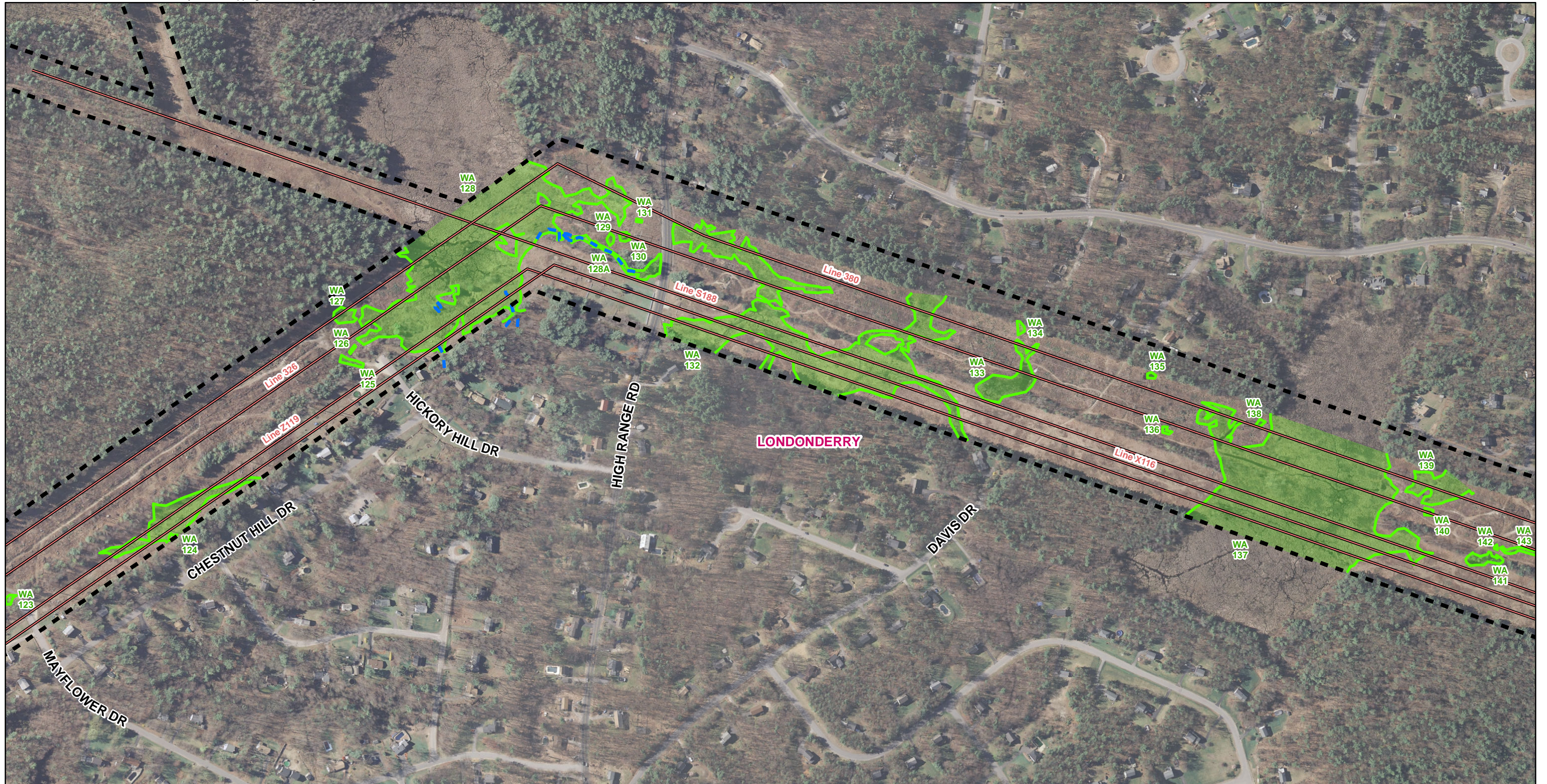
Existing Conditions
Merrimack Valley Reliability Project
Tewksbury 22A Substation MA to
Scobie Pond 345 kV Substation NH

Page 12 of 16

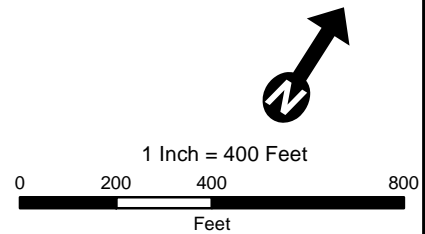
Source:
NGRID, Black & Veatch, VHB
Beals & Thomas, Eversource, Normandeau

Date: 7/13/2015



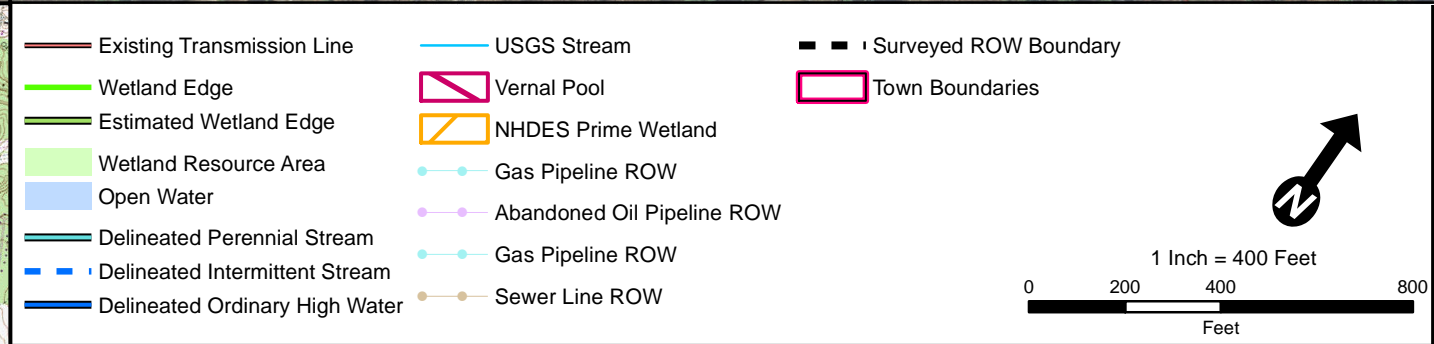
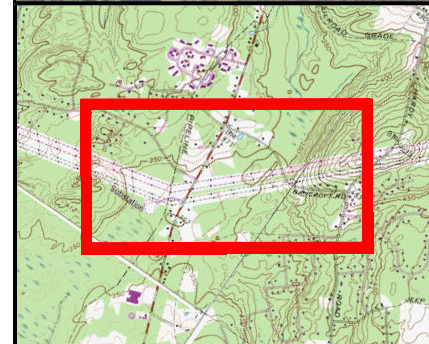


- | | | |
|--------------------------------|----------------------------|-----------------------|
| Existing Transmission Line | USGS Stream | Surveyed ROW Boundary |
| Wetland Edge | Vernal Pool | Town Boundaries |
| Estimated Wetland Edge | NHDES Prime Wetland | |
| Wetland Resource Area | Gas Pipeline ROW | |
| Open Water | Abandoned Oil Pipeline ROW | |
| Delineated Perennial Stream | Gas Pipeline ROW | |
| Delineated Intermittent Stream | Sewer Line ROW | |
| Delineated Ordinary High Water | | |



Existing Conditions
 Merrimack Valley Reliability Project
 Tewksbury 22A Substation MA to
 Scobie Pond 345 kV Substation NH





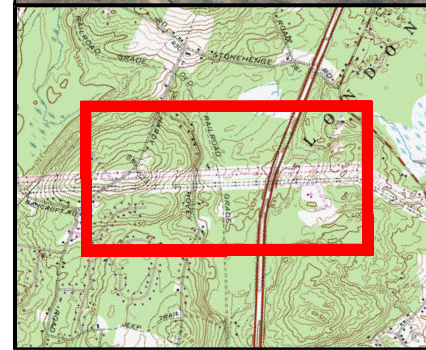
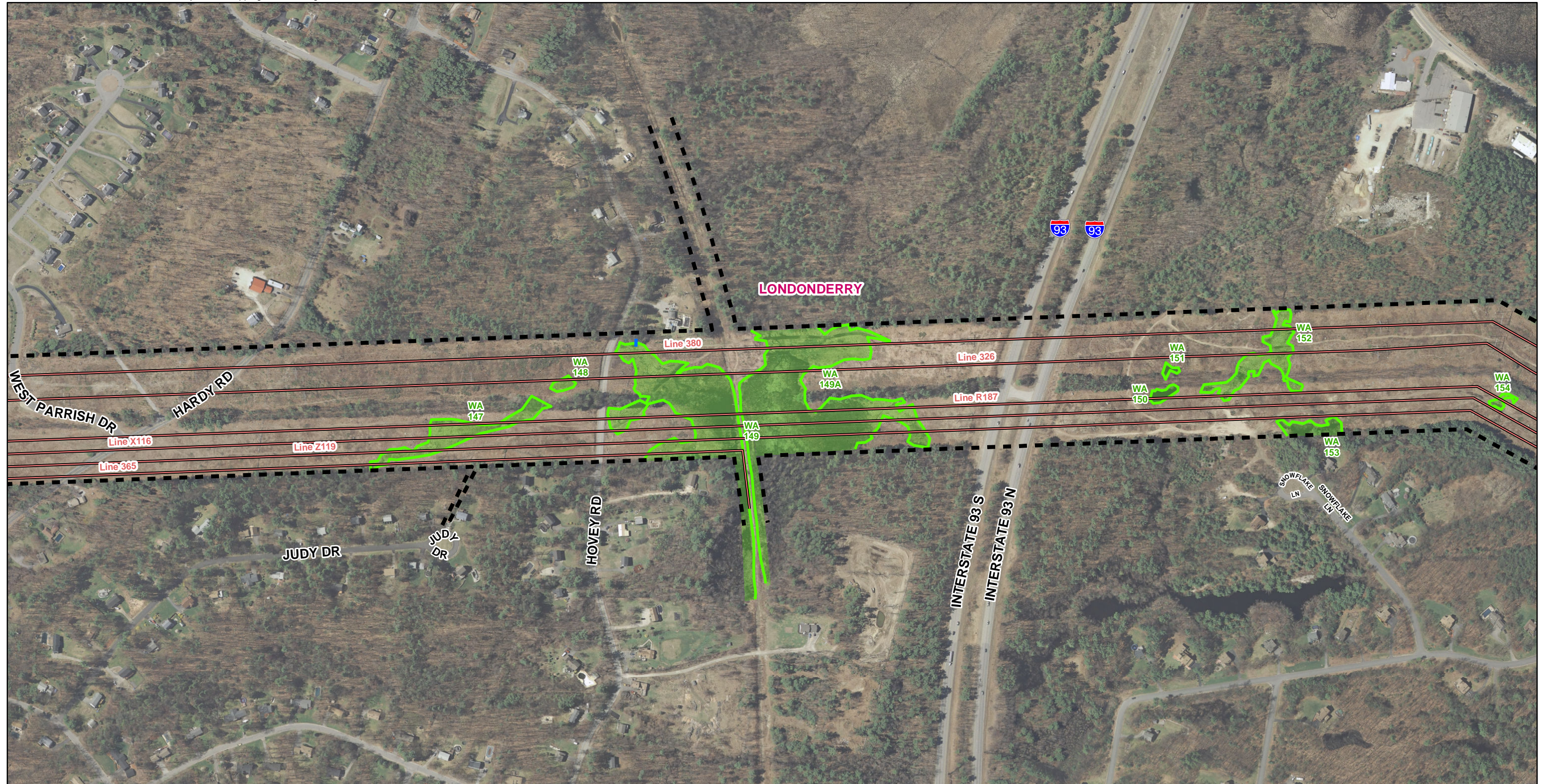
Existing Conditions
Merrimack Valley Reliability Project
Tewksbury 22A Substation MA to
Scobie Pond 345 kV Substation NH

Page 14 of 16

Source:
NGRID, Black & Veatch, VHB
Beals & Thomas, Eversource, Normandeau

Date: 7/13/2015





Existing Transmission Line	USGS Stream	Surveyed ROW Boundary
Wetland Edge	Vernal Pool	Town Boundaries
Estimated Wetland Edge	NHDES Prime Wetland	
Wetland Resource Area	Gas Pipeline ROW	
Open Water	Abandoned Oil Pipeline ROW	
Delineated Perennial Stream	Gas Pipeline ROW	
Delineated Intermittent Stream	Sewer Line ROW	
Delineated Ordinary High Water		

Existing Conditions
Merrimack Valley Reliability Project
Tewksbury 22A Substation MA to
Scobie Pond 345 kV Substation NH

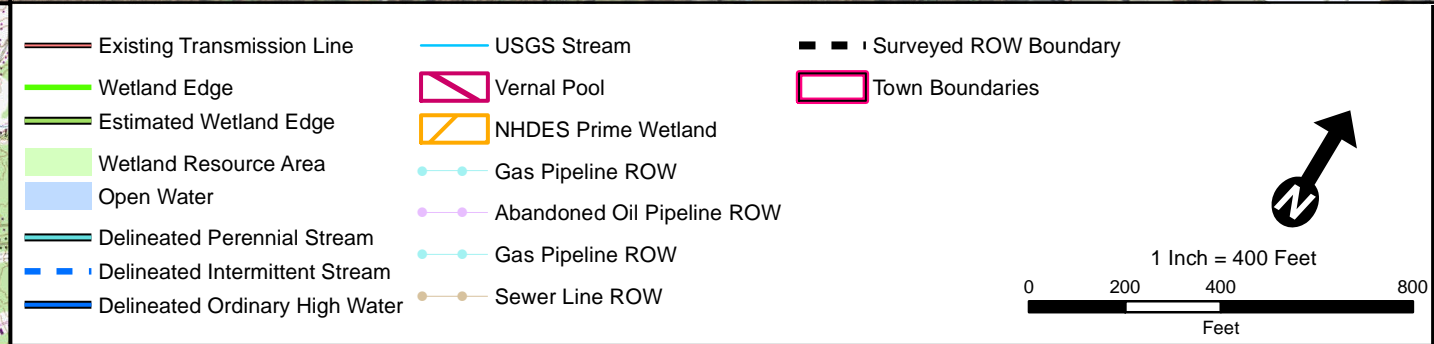
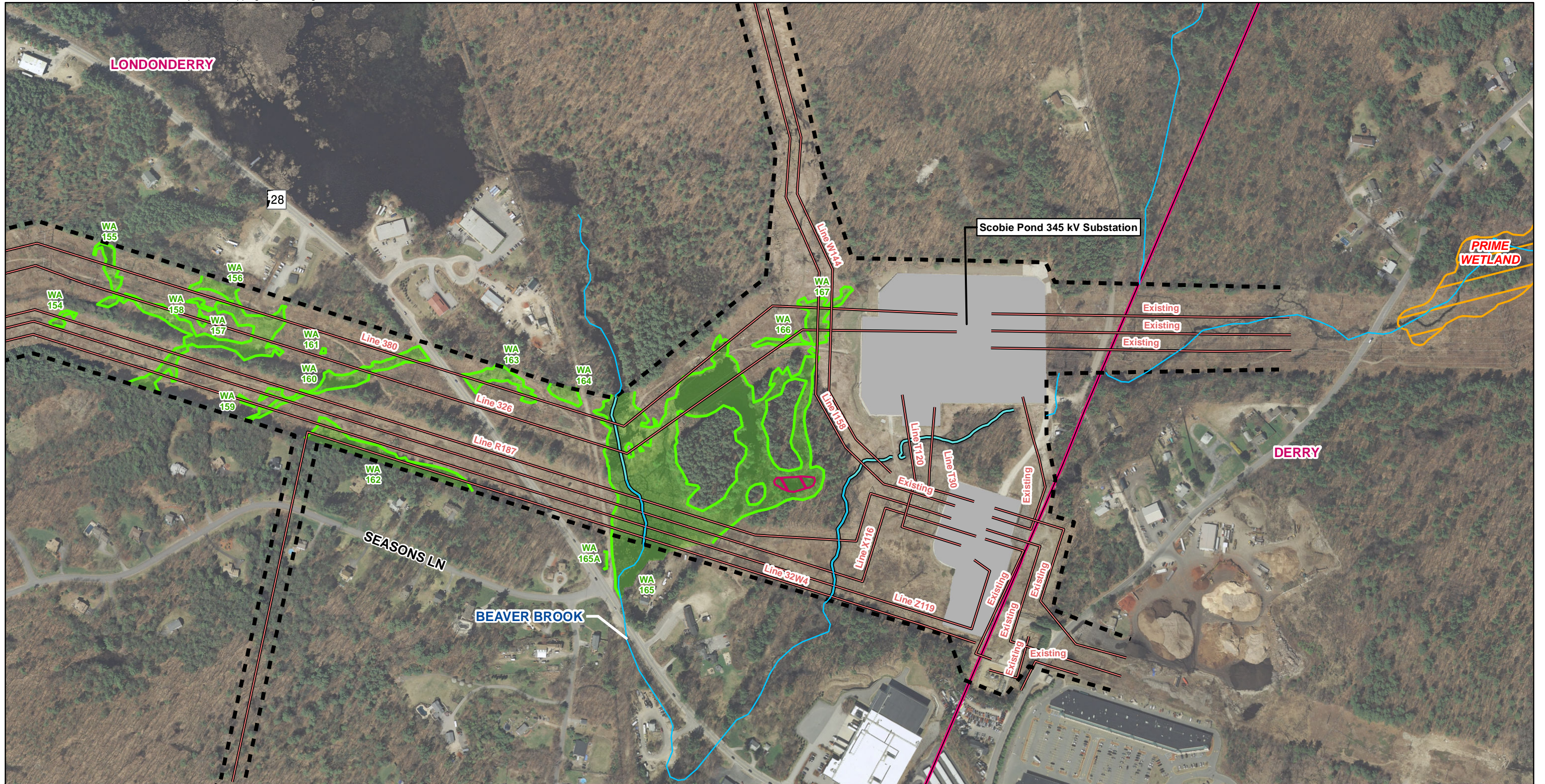
Page 15 of 16

1 Inch = 400 Feet

0 200 400 800
Feet

Source:
NGRID, Black & Veatch, VHB
Beals & Thomas, Eversource, Normandeau

Date: 7/13/2015



Existing Conditions
Merrimack Valley Reliability Project
Tewksbury 22A Substation MA to
Scobie Pond 345 kV Substation NH

Page 16 of 16

Source:
NGRID, Black & Veatch, VHB
Beals & Thomas, Eversource, Normandeau

Date: 7/13/2015

