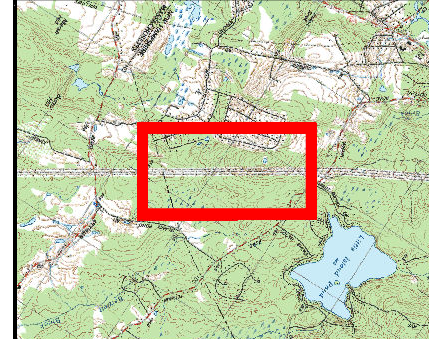
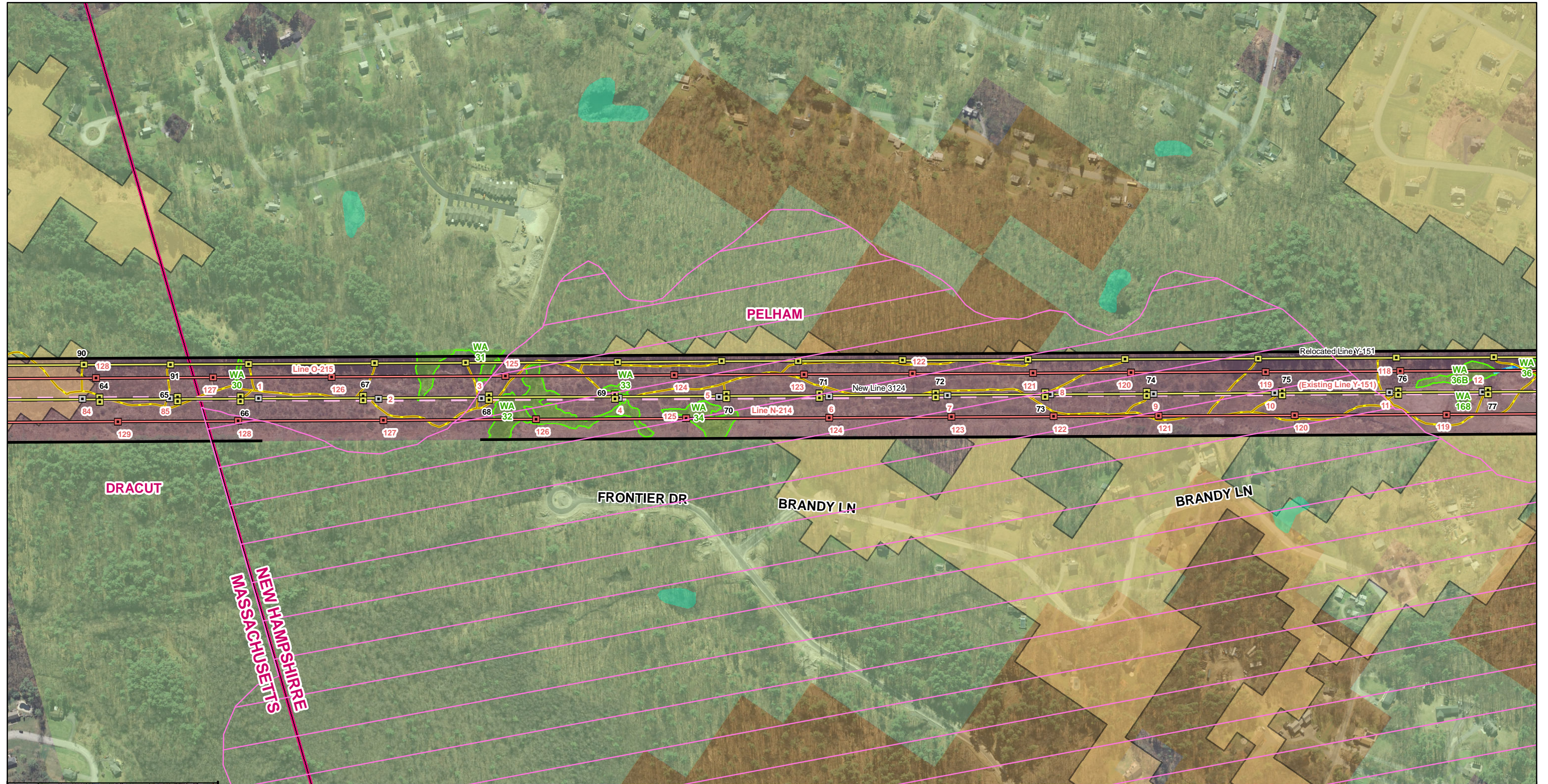


# Appendix I

## Wildlife Habitat Land Cover Types Mapping





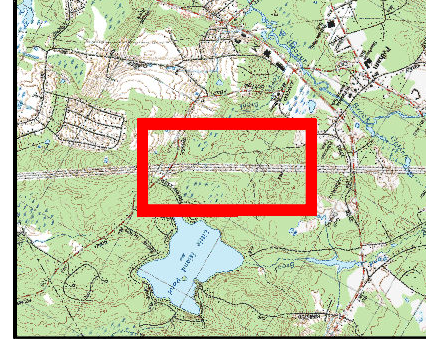
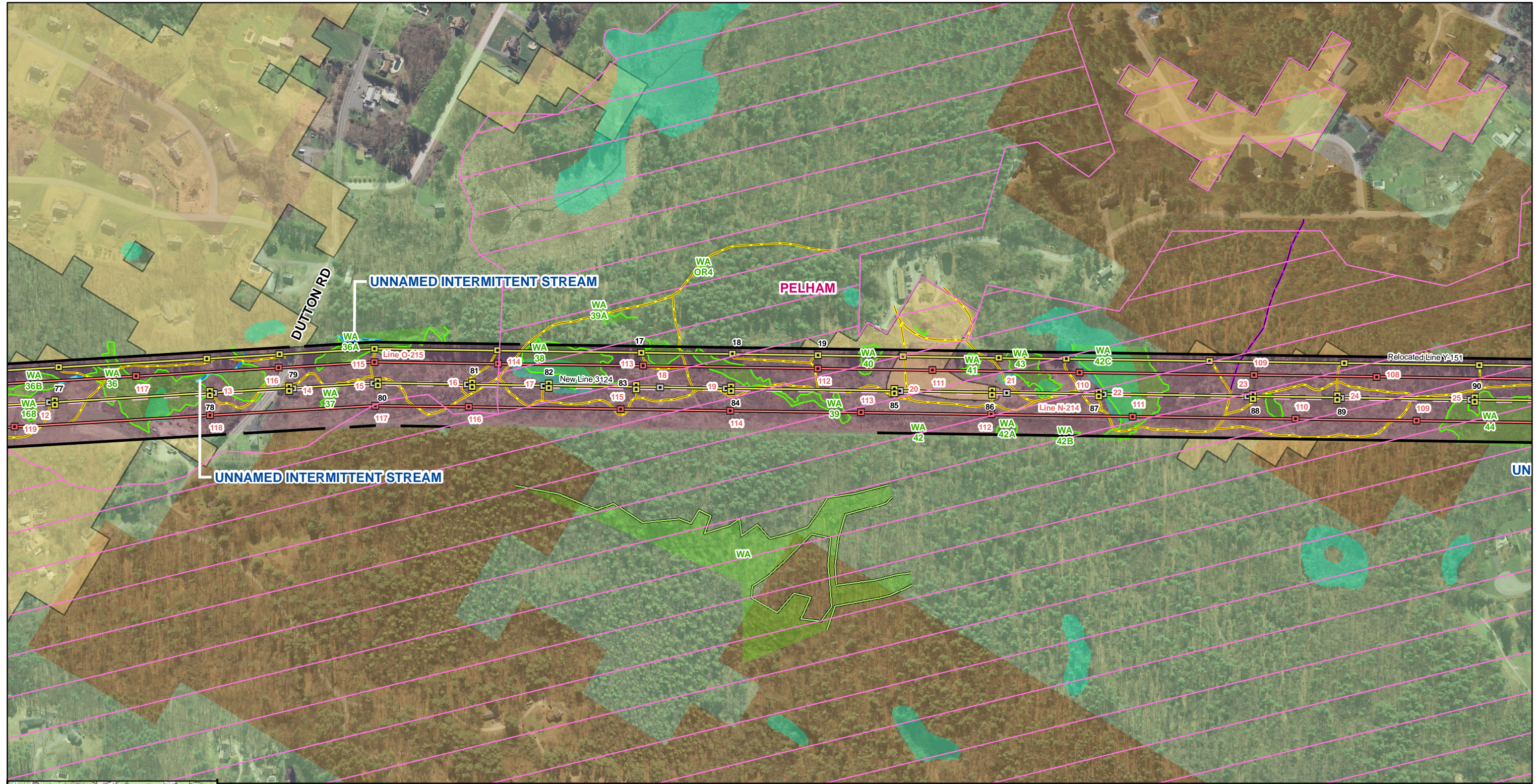
Existing Structure	Wetland Edge	Appalachian oak-pine	Floodplain forest
Existing Structure to be Removed	Estimated Wetland Edge	Grasslands	Peatland
Proposed Structure	Wetland Resource Area	Hemlock-hardwood-pine	Highest Ranked Habitat in NH
Existing Transmission Line	Open Water	Rocky ridge or Talus slope	Town Boundaries
Existing Line to be Removed	Delineated Perennial Stream	Wet meadow/shrub wetland	
Proposed Transmission Line	Delineated Intermittent Stream	Sand/Gravel Pit	
Surveyed ROW Boundary	Delineated Ordinary High Water	Upland Shrub	
Primary Access	Ditch	Orchard	
Alternate Access	USGS Stream		

**Wildlife Habitat Land Cover Type Mapping**  
**Merrimack Valley Reliability Project**  
**Tewksbury 22A Substation MA to**  
**Scobie Pond 345kV Substation NH**

Page 1 of 16

Source: NGRID, Black & Veatch, VHB, NHFG  
 Beals & Thomas, EVERSOURCE, Normandeau

Date: 7/13/2015



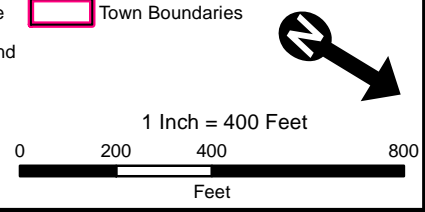
Existing Structure	Wetland Edge	Appalachian oak-pine	Floodplain forest
Existing Structure to be Removed	Estimated Wetland Edge	Grasslands	Peatland
Proposed Structure	Wetland Resource Area	Hemlock-hardwood-pine	Highest Ranked Habitat in NH
Existing Transmission Line	Open Water	Rocky ridge or Talus slope	Town Boundaries
Existing Line to be Removed	Delineated Perennial Stream	Wet meadow/shrub wetland	
Proposed Transmission Line	Delineated Intermittent Stream	Sand/Gravel Pit	
Surveyed ROW Boundary	Delineated Ordinary High Water	Upland Shrub	
Primary Access	Ditch	Orchard	
Alternate Access	USGS Stream		

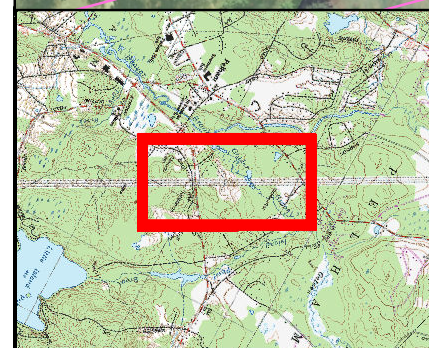
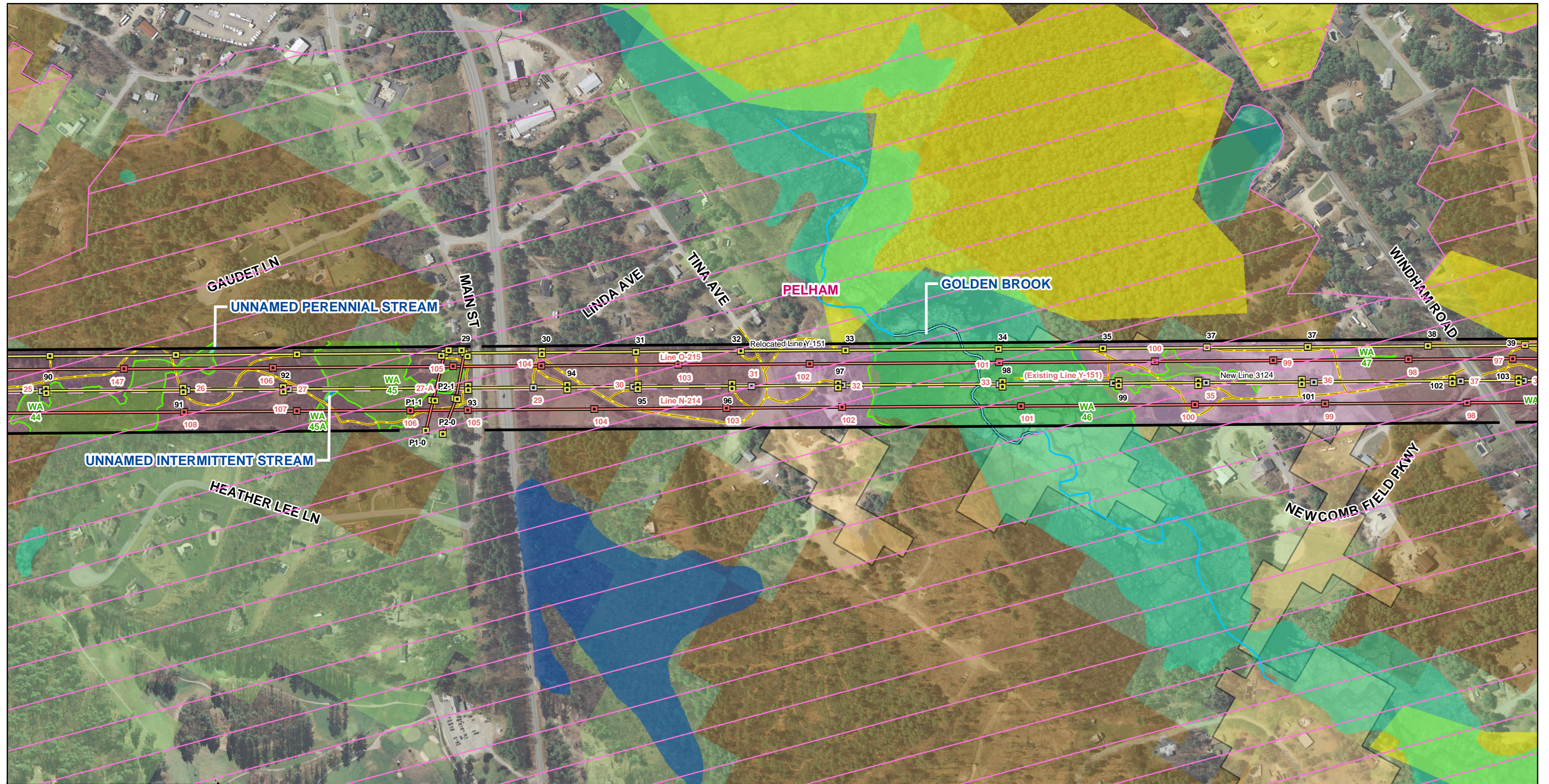
**Wildlife Habitat Land Cover Type Mapping**  
**Merrimack Valley Reliability Project**  
**Tewksbury 22A Substation MA to**  
**Scobie Pond 345kV Substation NH**

Page 2 of 16

Source:  
 NGRID, Black & Veatch, VHB, NHFG  
 Beals & Thomas, EVERSOURCE, Normandeau

Date: 7/13/2015





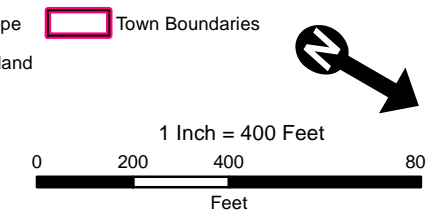
Existing Structure	Wetland Edge	Appalachian oak-pine	Floodplain forest
Existing Structure to be Removed	Estimated Wetland Edge	Grasslands	Peatland
Proposed Structure	Wetland Resource Area	Hemlock-hardwood-pine	Highest Ranked Habitat in NH
Existing Transmission Line	Open Water	Rocky ridge or Talus slope	Town Boundaries
Existing Line to be Removed	Delineated Perennial Stream	Wet meadow/shrub wetland	
Proposed Transmission Line	Delineated Intermittent Stream	Sand/Gravel Pit	
Surveyed ROW Boundary	Delineated Ordinary High Water	Upland Shrub	
Primary Access	Ditch	Orchard	
Alternate Access	USGS Stream		

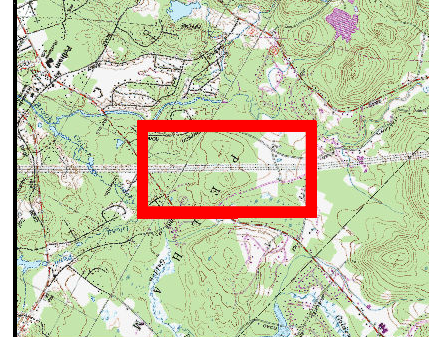
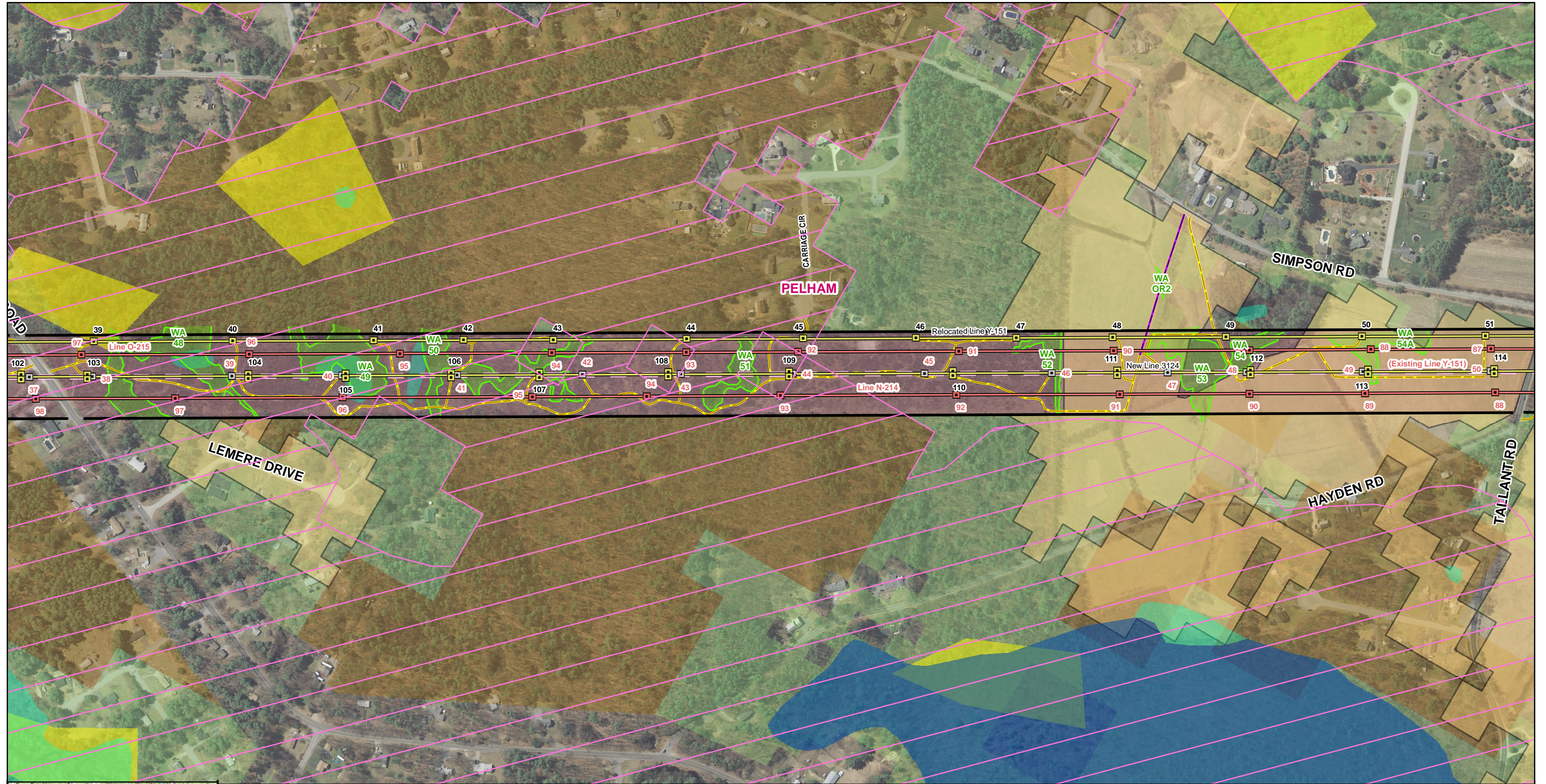
**Wildlife Habitat Land Cover Type Mapping**  
**Merrimack Valley Reliability Project**  
**Tewksbury 22A Substation MA to**  
**Scobie Pond 345kV Substation NH**

Page 3 of 16

Source: NGRID, Black & Veatch, VHB, NHFG  
 Beals & Thomas, EVERSOURCE, Normandeau

Date: 7/13/2015





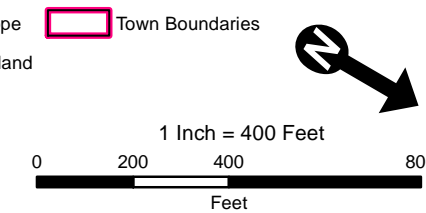
Existing Structure	Wetland Edge	Appalachian oak-pine	Floodplain forest
Existing Structure to be Removed	Estimated Wetland Edge	Grasslands	Peatland
Proposed Structure	Wetland Resource Area	Hemlock-hardwood-pine	Highest Ranked Habitat in NH
Existing Transmission Line	Open Water	Rocky ridge or Talus slope	Town Boundaries
Existing Line to be Removed	Delineated Perennial Stream	Wet meadow/shrub wetland	
Proposed Transmission Line	Delineated Intermittent Stream	Sand/Gravel Pit	
Surveyed ROW Boundary	Delineated Ordinary High Water	Upland Shrub	
Primary Access	Ditch	Orchard	
Alternate Access	USGS Stream		

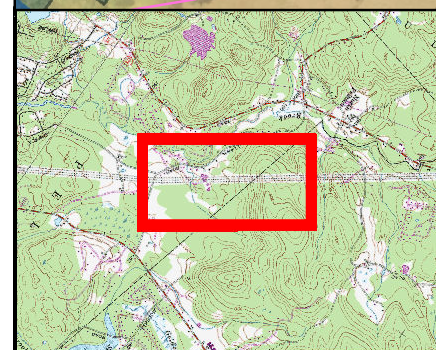
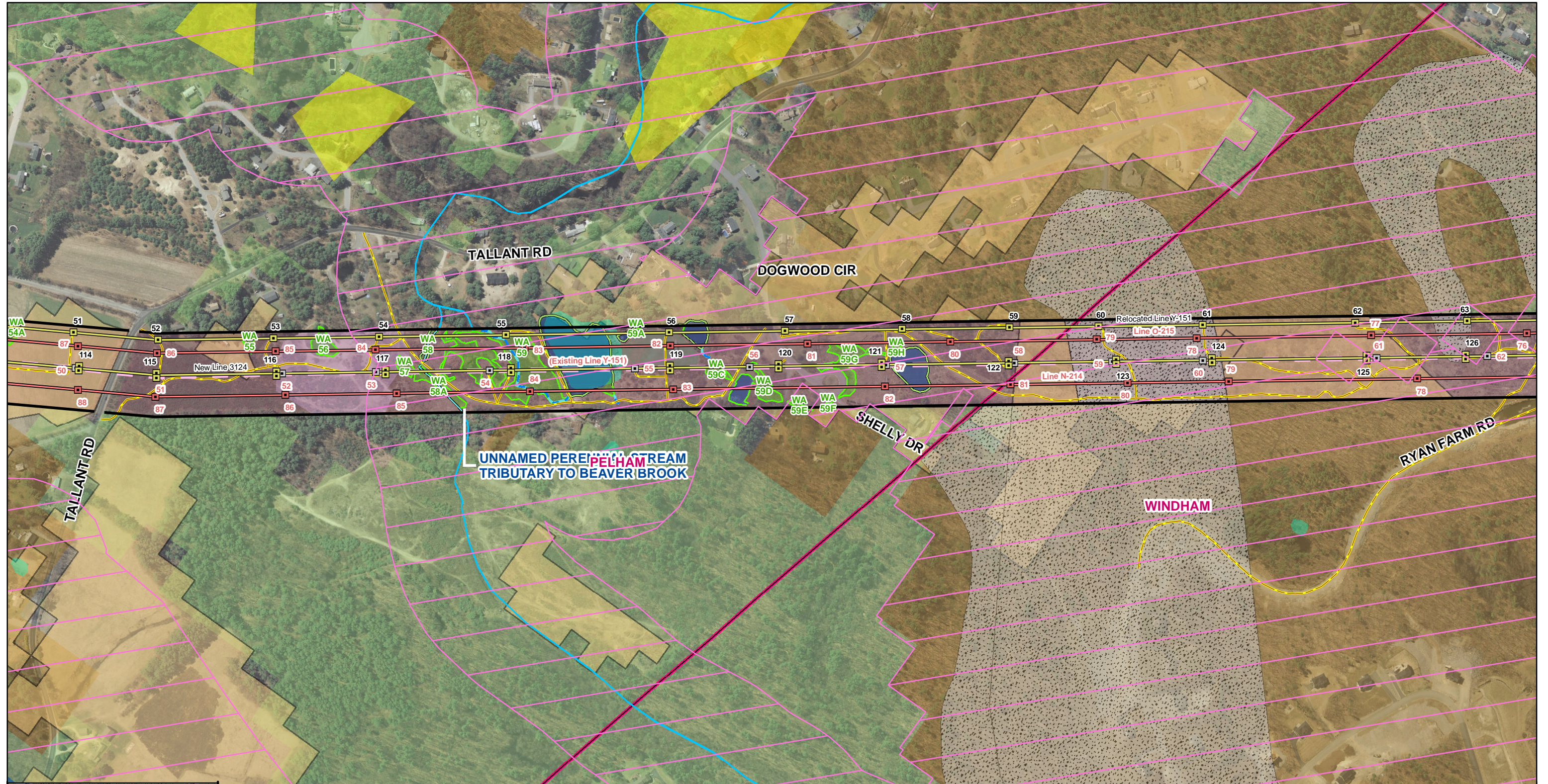
**Wildlife Habitat Land Cover Type Mapping**  
**Merrimack Valley Reliability Project**  
**Tewksbury 22A Substation MA to**  
**Scobie Pond 345kV Substation NH**

Page 4 of 16

Source: NGRID, Black & Veatch, VHB, NHFG  
 Beals & Thomas, EVERSOURCE, Normandeau

Date: 7/13/2015





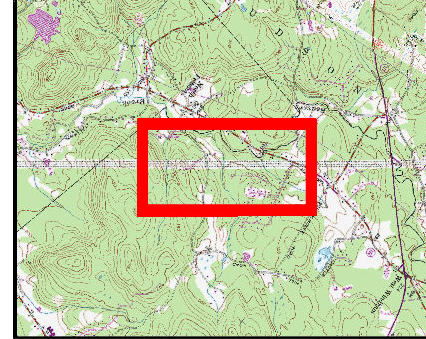
Existing Structure	Wetland Edge	Appalachian oak-pine	Floodplain forest
Existing Structure to be Removed	Estimated Wetland Edge	Grasslands	Peatland
Proposed Structure	Wetland Resource Area	Hemlock-hardwood-pine	Highest Ranked Habitat in NH
Existing Transmission Line	Open Water	Rocky ridge or Talus slope	Town Boundaries
Existing Line to be Removed	Delineated Perennial Stream	Wet meadow/shrub wetland	
Proposed Transmission Line	Delineated Intermittent Stream	Sand/Gravel Pit	
Surveyed ROW Boundary	Delineated Ordinary High Water	Upland Shrub	
Primary Access	Ditch	Orchard	
Alternate Access	USGS Stream		

**Wildlife Habitat Land Cover Type Mapping**  
**Merrimack Valley Reliability Project**  
**Tewksbury 22A Substation MA to**  
**Scobie Pond 345kV Substation NH**

Page 5 of 16

Source:  
 NGRID, Black & Veatch, VHB, NHFG  
 Beals & Thomas, EVERSOURCE, Normandeau

Date: 7/13/2015



Existing Structure	Wetland Edge	Appalachian oak-pine	Floodplain forest
Existing Structure to be Removed	Estimated Wetland Edge	Grasslands	Peatland
Proposed Structure	Wetland Resource Area	Hemlock-hardwood-pine	Highest Ranked Habitat in NH
Existing Transmission Line	Open Water	Rocky ridge or Talus slope	Town Boundaries
Existing Line to be Removed	Delineated Perennial Stream	Wet meadow/shrub wetland	
Proposed Transmission Line	Delineated Intermittent Stream	Sand/Gravel Pit	
Surveyed ROW Boundary	Delineated Ordinary High Water	Upland Shrub	
Primary Access	Ditch	Orchard	
Alternate Access	USGS Stream		

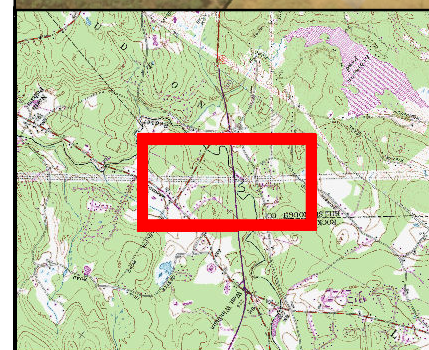
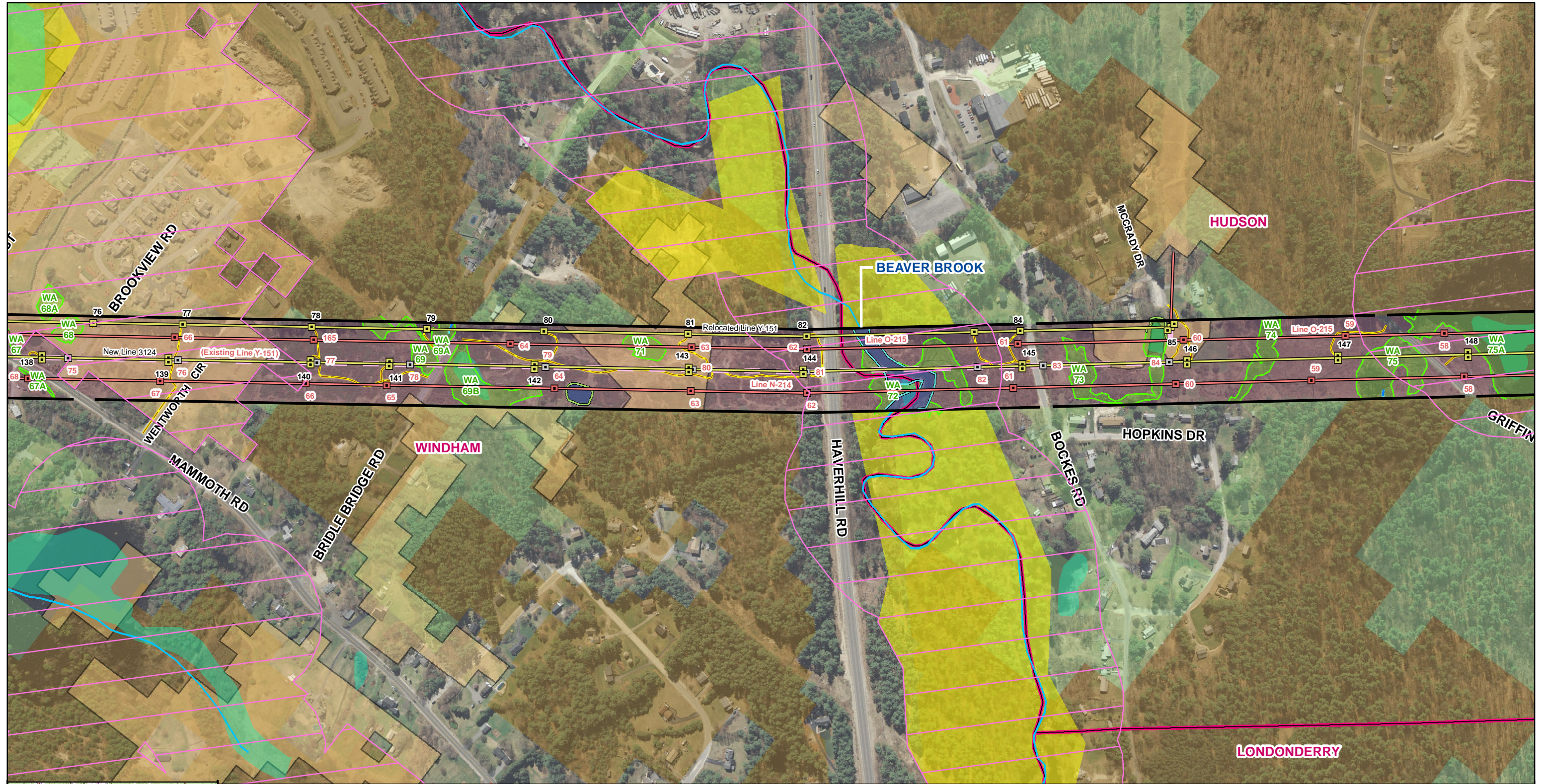
**Wildlife Habitat Land Cover Type Mapping**  
**Merrimack Valley Reliability Project**  
**Tewksbury 22A Substation MA to**  
**Scobie Pond 345kV Substation NH**

Page 6 of 16

Source: NGRID, Black & Veatch, VHB, NHFG  
 Beals & Thomas, EVERSOURCE, Normandeau

Date: 7/13/2015





Existing Structure	Wetland Edge	Appalachian oak-pine	Floodplain forest
Existing Structure to be Removed	Estimated Wetland Edge	Grasslands	Peatland
Proposed Structure	Wetland Resource Area	Hemlock-hardwood-pine	Highest Ranked Habitat in NH
Existing Transmission Line	Open Water	Rocky ridge or Talus slope	Town Boundaries
Existing Line to be Removed	Delineated Perennial Stream	Wet meadow/shrub wetland	
Proposed Transmission Line	Delineated Intermittent Stream	Sand/Gravel Pit	
Surveyed ROW Boundary	Delineated Ordinary High Water	Upland Shrub	
Primary Access	Ditch	Orchard	
Alternate Access	USGS Stream		

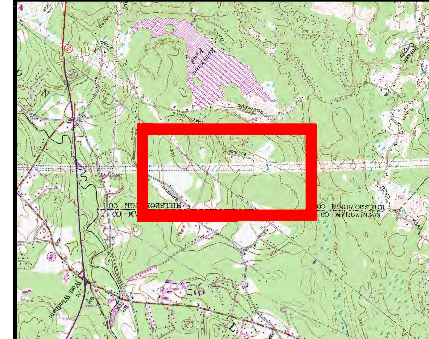
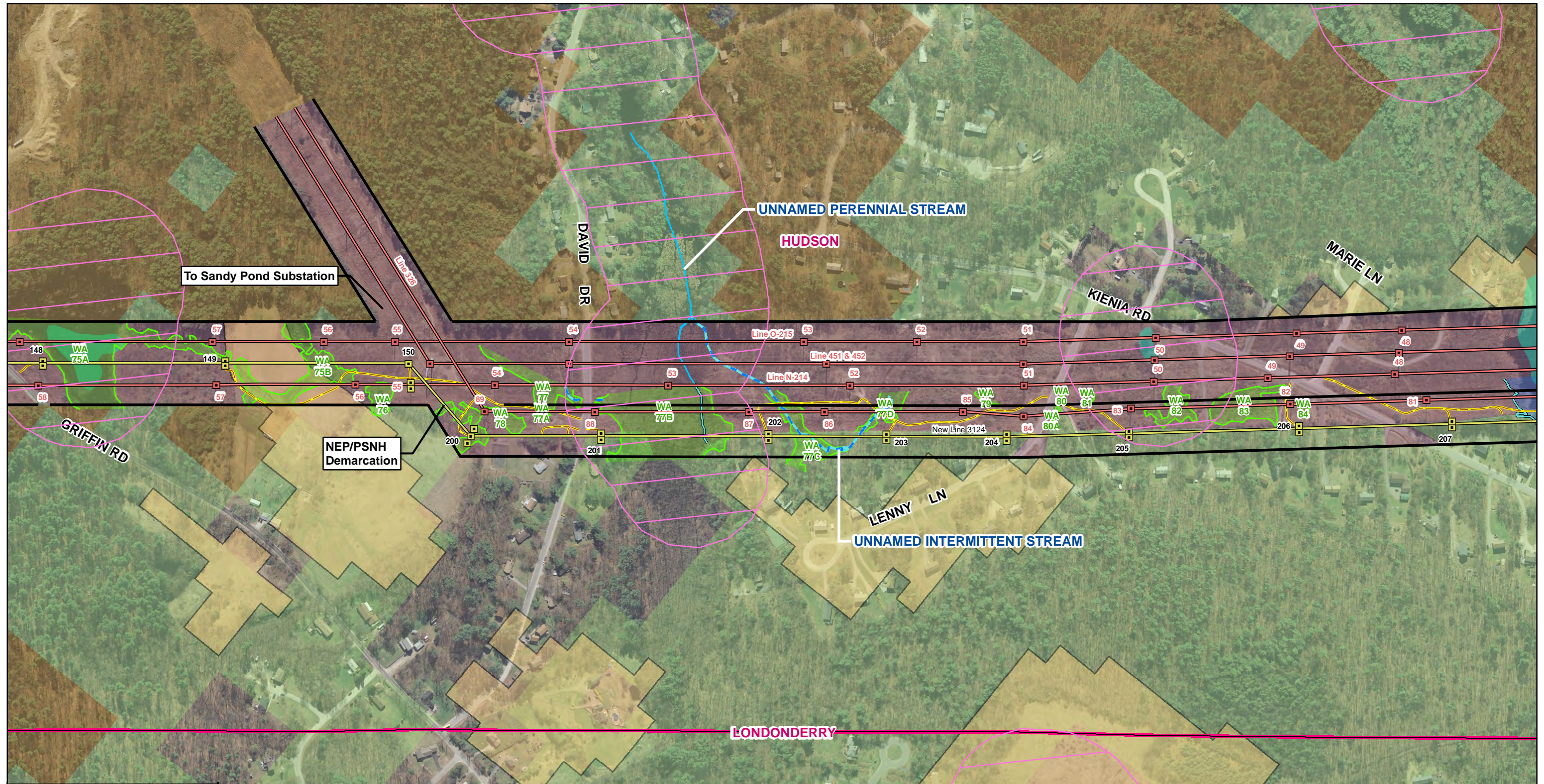
**Wildlife Habitat Land Cover Type Mapping**  
**Merrimack Valley Reliability Project**  
**Tewksbury 22A Substation MA to**  
**Scobie Pond 345kV Substation NH**

Page 7 of 16

Source: NGRID, Black & Veatch, VHB, NHFG, Beals & Thomas, EVERSOURCE, Normandeau

Date: 7/13/2015





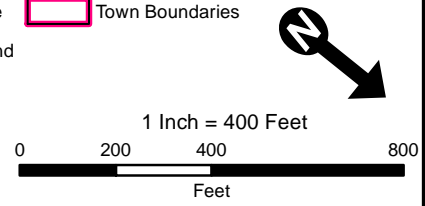
Existing Structure	Wetland Edge	Appalachian oak-pine	Floodplain forest
Existing Structure to be Removed	Estimated Wetland Edge	Grasslands	Peatland
Proposed Structure	Wetland Resource Area	Hemlock-hardwood-pine	Highest Ranked Habitat in NH
Existing Transmission Line	Open Water	Rocky ridge or Talus slope	Town Boundaries
Existing Line to be Removed	Delineated Perennial Stream	Wet meadow/shrub wetland	
Proposed Transmission Line	Delineated Intermittent Stream	Sand/Gravel Pit	
Surveyed ROW Boundary	Delineated Ordinary High Water	Upland Shrub	
Primary Access	Ditch	Orchard	
Alternate Access	USGS Stream		

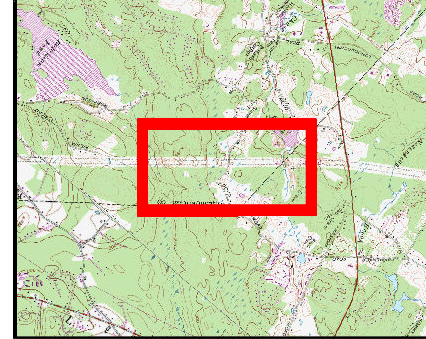
**Wildlife Habitat Land Cover Type Mapping  
Merrimack Valley Reliability Project  
Tewksbury 22A Substation MA to  
Scobie Pond 345kV Substation NH**

Page 8 of 16

Source:  
NGRID, Black & Veatch, VHB, NHFG  
Beals & Thomas, EVERSOURCE, Normandeau

Date: 7/13/2015





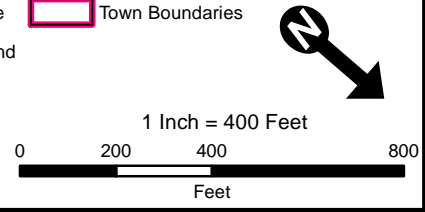
Existing Structure	Wetland Edge	Appalachian oak-pine	Floodplain forest
Existing Structure to be Removed	Estimated Wetland Edge	Grasslands	Peatland
Proposed Structure	Wetland Resource Area	Hemlock-hardwood-pine	Highest Ranked Habitat in NH
Existing Transmission Line	Open Water	Rocky ridge or Talus slope	Town Boundaries
Existing Line to be Removed	Delineated Perennial Stream	Wet meadow/shrub wetland	
Proposed Transmission Line	Delineated Intermittent Stream	Sand/Gravel Pit	
Surveyed ROW Boundary	Delineated Ordinary High Water	Upland Shrub	
Primary Access	Ditch	Orchard	
Alternate Access	USGS Stream		

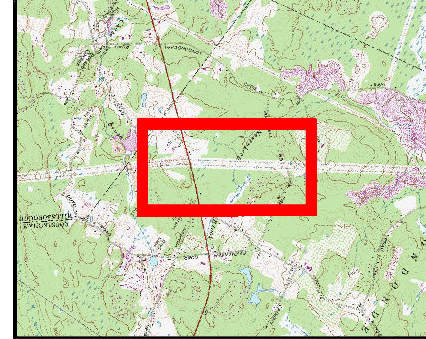
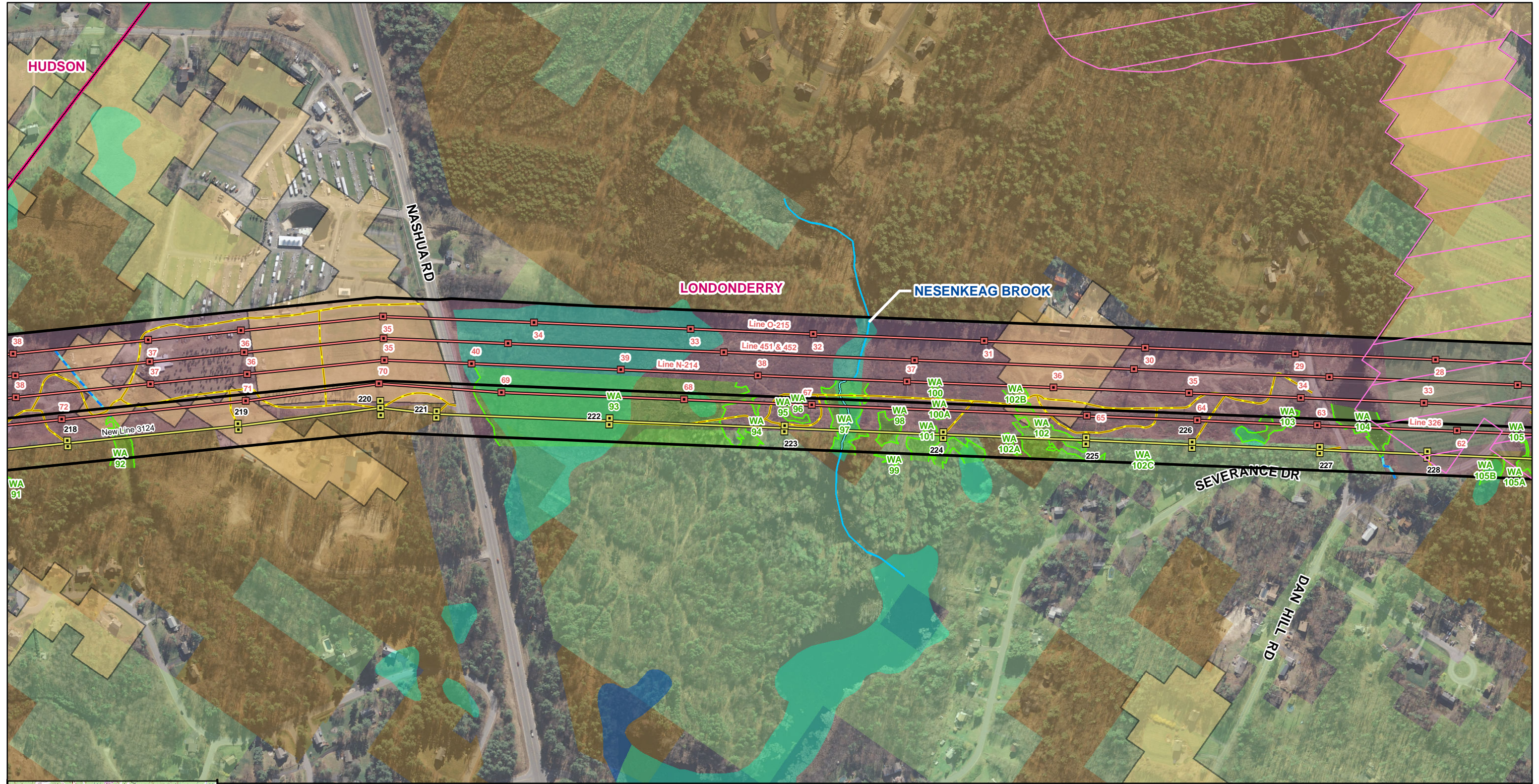
**Wildlife Habitat Land Cover Type Mapping**  
**Merrimack Valley Reliability Project**  
**Tewksbury 22A Substation MA to**  
**Scobie Pond 345kV Substation NH**

Page 9 of 16

Source:  
 NGRID, Black & Veatch, VHB, NHFG  
 Beals & Thomas, EVERSOURCE, Normandeau

Date: 7/13/2015





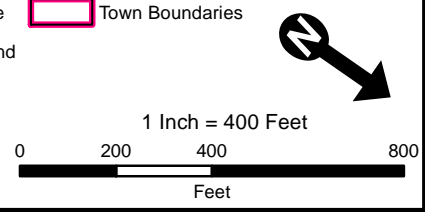
Existing Structure	Wetland Edge	Appalachian oak-pine	Floodplain forest
Existing Structure to be Removed	Estimated Wetland Edge	Grasslands	Peatland
Proposed Structure	Wetland Resource Area	Hemlock-hardwood-pine	Highest Ranked Habitat in NH
Existing Transmission Line	Open Water	Rocky ridge or Talus slope	Town Boundaries
Existing Line to be Removed	Delineated Perennial Stream	Wet meadow/shrub wetland	
Proposed Transmission Line	Delineated Intermittent Stream	Sand/Gravel Pit	
Surveyed ROW Boundary	Delineated Ordinary High Water	Upland Shrub	
Primary Access	Ditch	Orchard	
Alternate Access	USGS Stream		

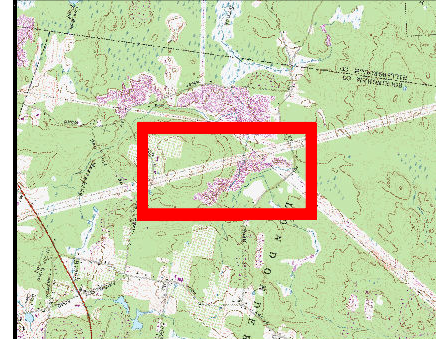
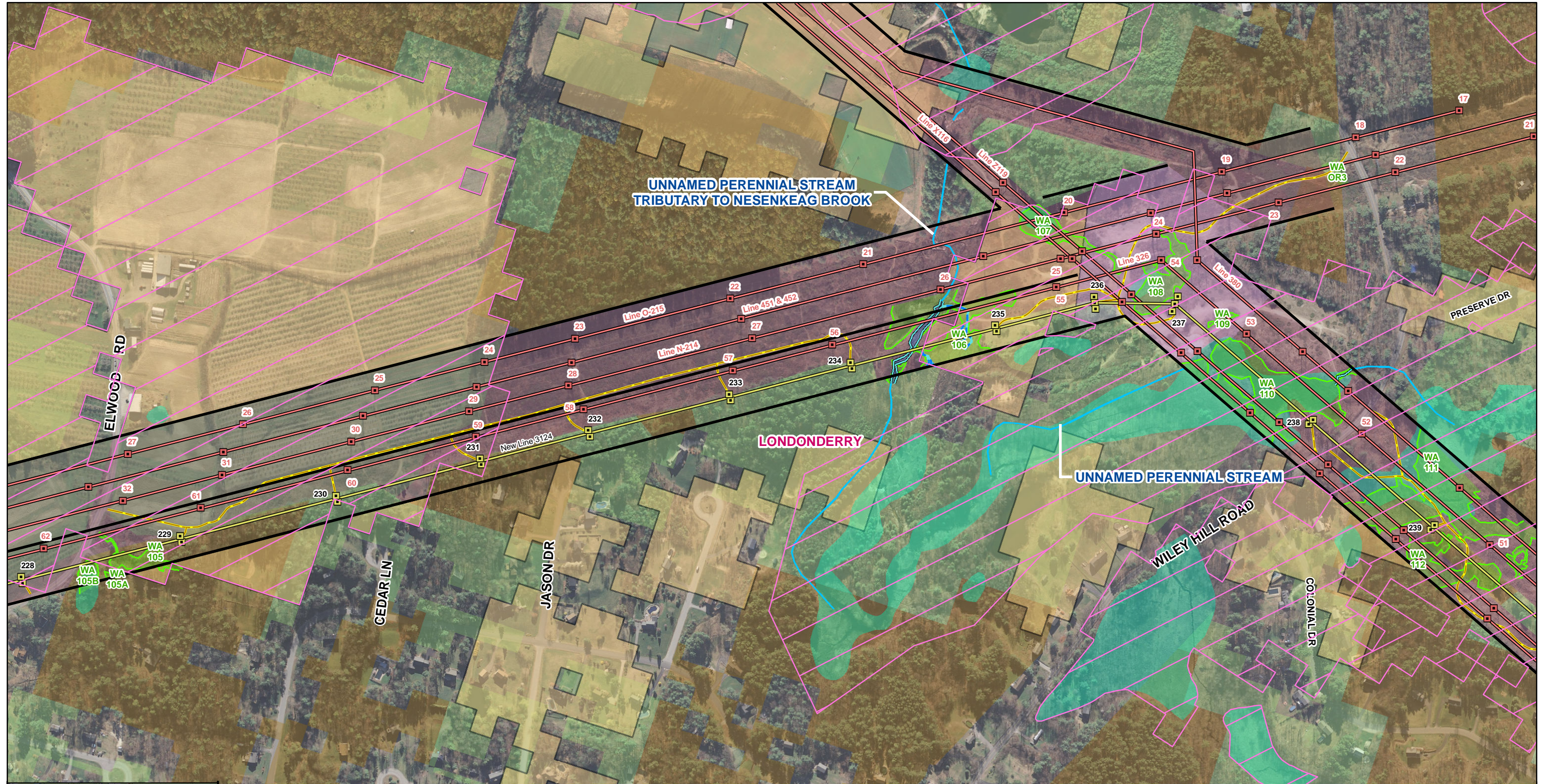
**Wildlife Habitat Land Cover Type Mapping  
Merrimack Valley Reliability Project  
Tewksbury 22A Substation MA to  
Scobie Pond 345kV Substation NH**

Page 10 of 16

Source: NGRID, Black & Veatch, VHB, NHFG, Beals & Thomas, EVERSOURCE, Normandeau

Date: 7/13/2015





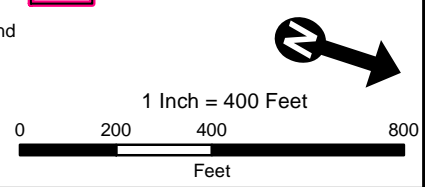
Existing Structure	Wetland Edge	Appalachian oak-pine	Floodplain forest
Existing Structure to be Removed	Estimated Wetland Edge	Grasslands	Peatland
Proposed Structure	Wetland Resource Area	Hemlock-hardwood-pine	Highest Ranked Habitat in NH
Existing Transmission Line	Open Water	Rocky ridge or Talus slope	Town Boundaries
Existing Line to be Removed	Delineated Perennial Stream	Wet meadow/shrub wetland	
Proposed Transmission Line	Delineated Intermittent Stream	Sand/Gravel Pit	
Surveyed ROW Boundary	Delineated Ordinary High Water	Upland Shrub	
Primary Access	Ditch	Orchard	
Alternate Access	USGS Stream		

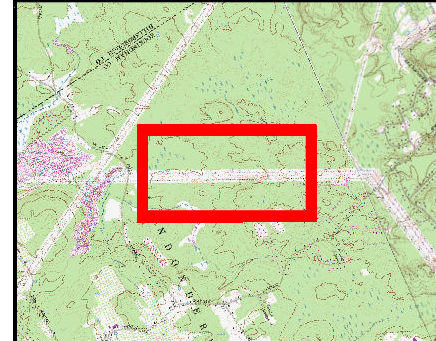
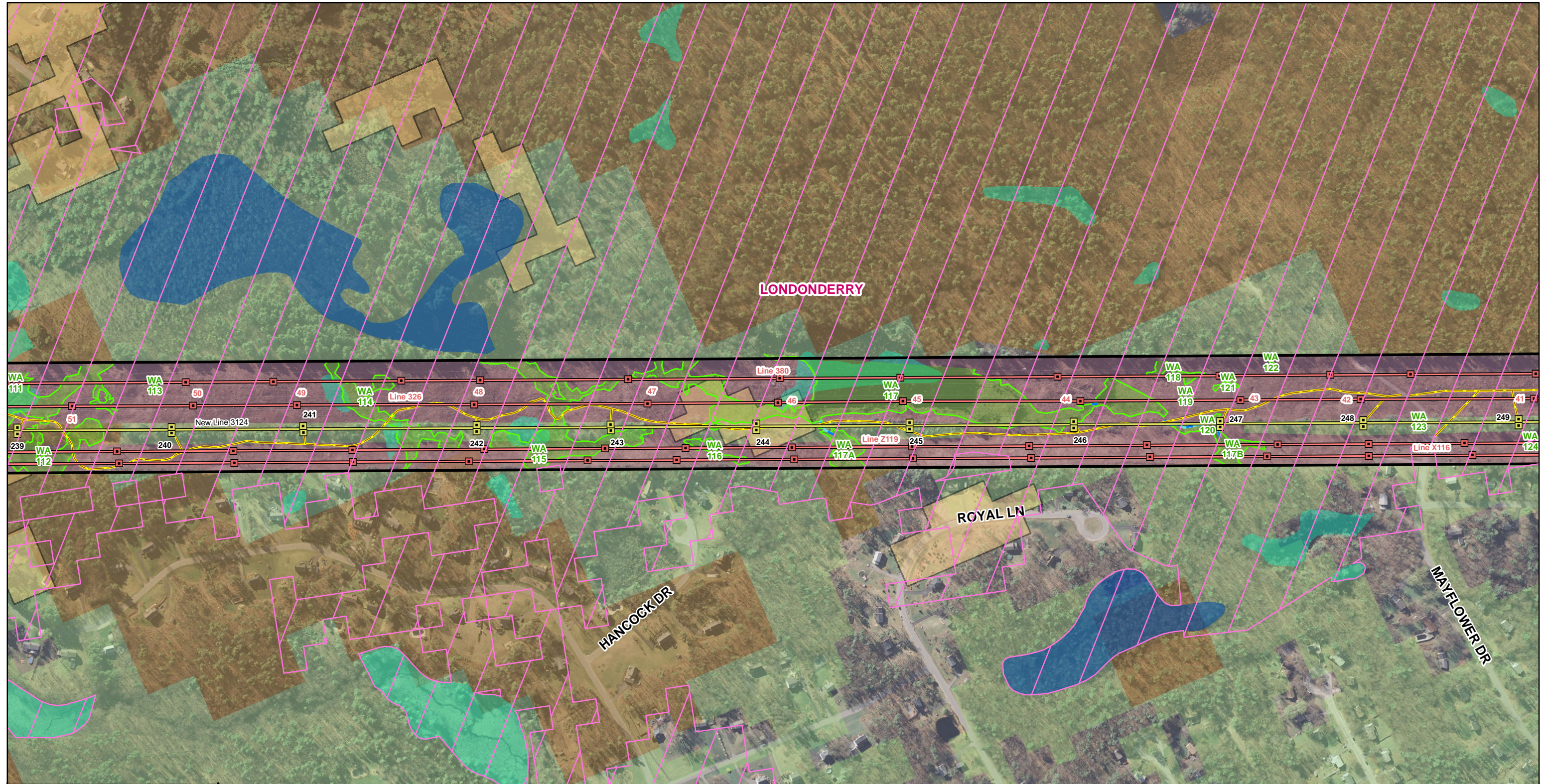
**Wildlife Habitat Land Cover Type Mapping  
Merrimack Valley Reliability Project  
Tewksbury 22A Substation MA to  
Scobie Pond 345kV Substation NH**

Page 11 of 16

Source: NGRID, Black & Veatch, VHB, NHFG, Beals & Thomas, EVERSOURCE, Normandeau

Date: 7/13/2015





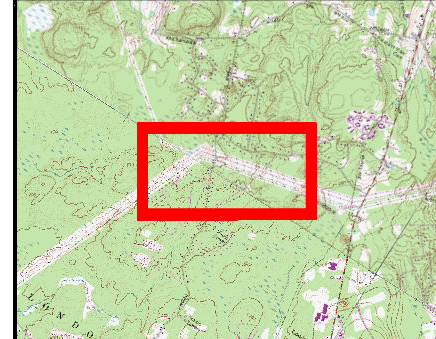
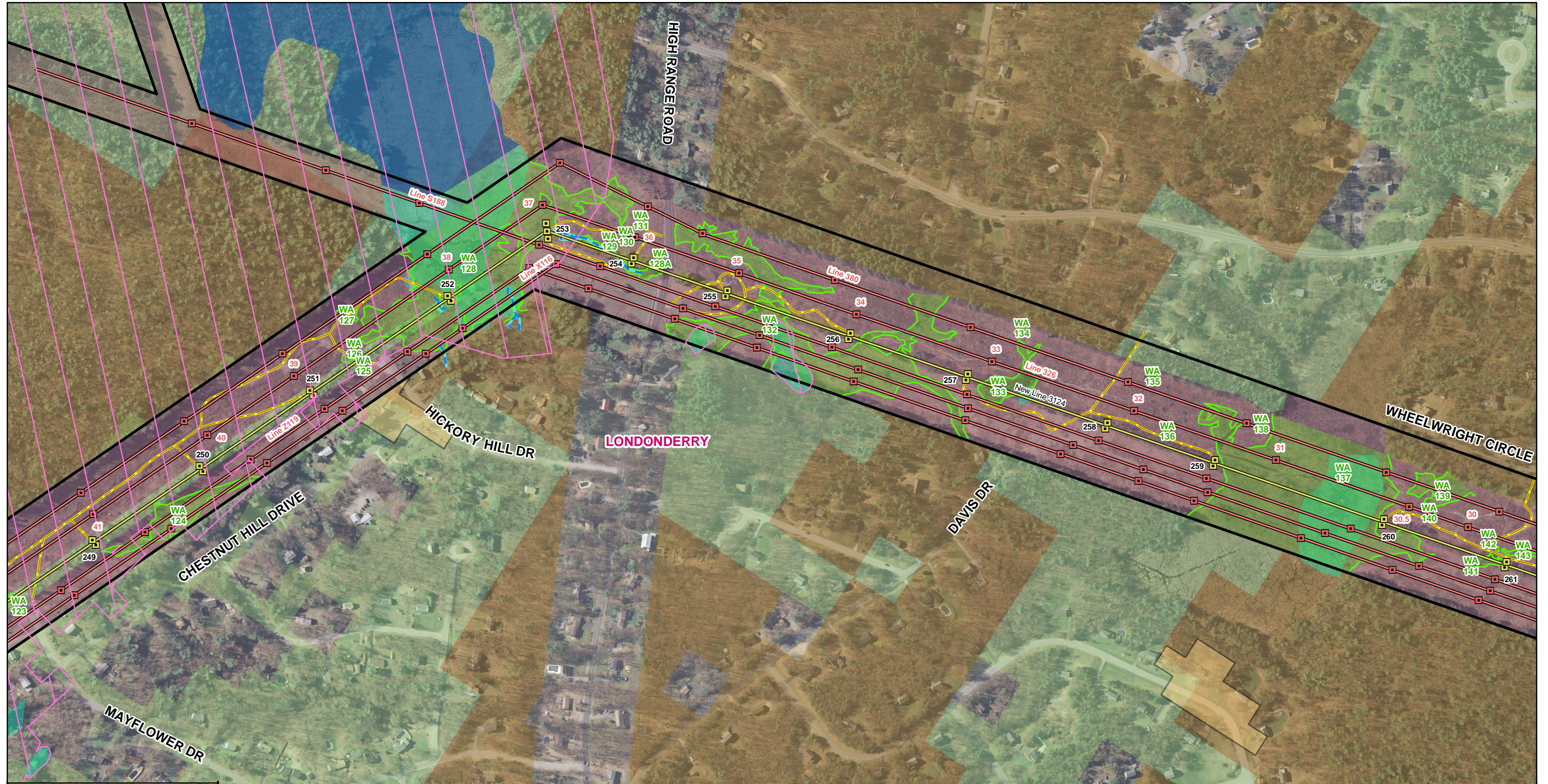
Existing Structure	Wetland Edge	Appalachian oak-pine	Floodplain forest
Existing Structure to be Removed	Estimated Wetland Edge	Grasslands	Peatland
Proposed Structure	Wetland Resource Area	Hemlock-hardwood-pine	Highest Ranked Habitat in NH
Existing Transmission Line	Open Water	Rocky ridge or Talus slope	Town Boundaries
Existing Line to be Removed	Delineated Perennial Stream	Wet meadow/shrub wetland	
Proposed Transmission Line	Delineated Intermittent Stream	Sand/Gravel Pit	
Surveyed ROW Boundary	Delineated Ordinary High Water	Upland Shrub	
Primary Access	Ditch	Orchard	
Alternate Access	USGS Stream		

**Wildlife Habitat Land Cover Type Mapping**  
**Merrimack Valley Reliability Project**  
**Tewksbury 22A Substation MA to**  
**Scobie Pond 345kV Substation NH**

Page 12 of 16

Source:  
 NGRID, Black & Veatch, VHB, NHFG  
 Beals & Thomas, EVERSOURCE, Normandeau

Date: 7/13/2015



Existing Structure	Wetland Edge	Appalachian oak-pine	Floodplain forest
Existing Structure to be Removed	Estimated Wetland Edge	Grasslands	Peatland
Proposed Structure	Wetland Resource Area	Hemlock-hardwood-pine	Highest Ranked Habitat in NH
Existing Transmission Line	Open Water	Rocky ridge or Talus slope	Town Boundaries
Existing Line to be Removed	Delineated Perennial Stream	Wet meadow/shrub wetland	
Proposed Transmission Line	Delineated Intermittent Stream	Sand/Gravel Pit	
Surveyed ROW Boundary	Delineated Ordinary High Water	Upland Shrub	
Primary Access	Ditch	Orchard	
Alternate Access	USGS Stream		

**Wildlife Habitat Land Cover Type Mapping**  
**Merrimack Valley Reliability Project**  
**Tewksbury 22A Substation MA to**  
**Scobie Pond 345kV Substation NH**

Page 13 of 16

Source:  
 NGRID, Black & Veatch, VHB, NHFG  
 Beals & Thomas, EVERSOURCE, Normandeau

Date: 7/13/2015



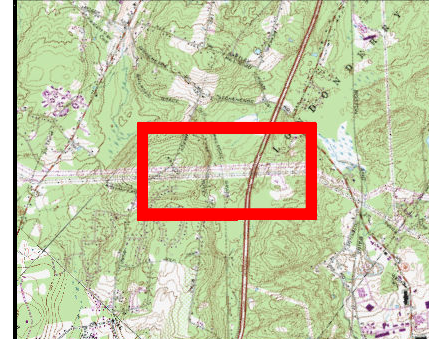
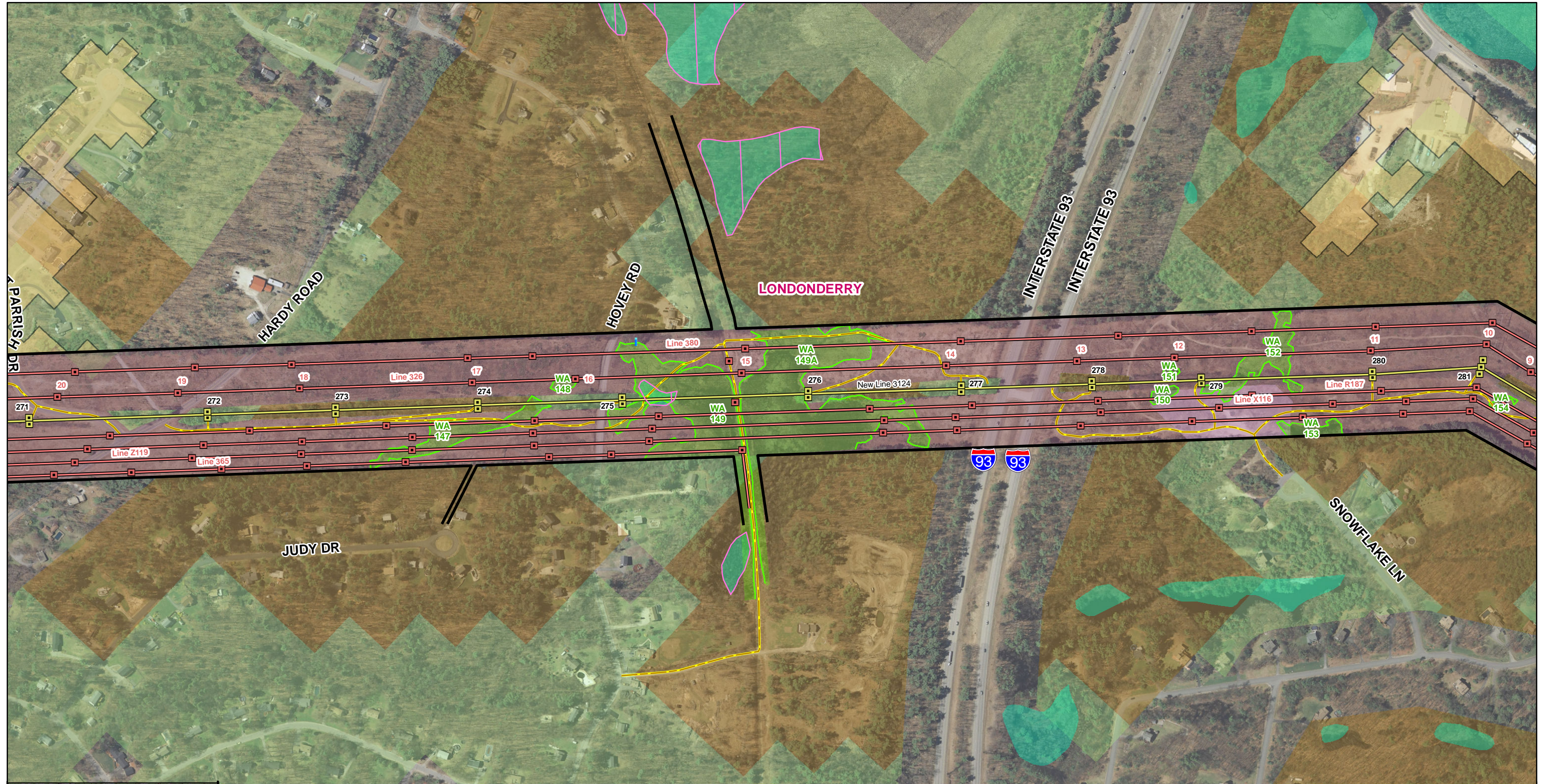
Existing Structure	Wetland Edge	Appalachian oak-pine	Floodplain forest
Existing Structure to be Removed	Estimated Wetland Edge	Grasslands	Peatland
Proposed Structure	Wetland Resource Area	Hemlock-hardwood-pine	Highest Ranked Habitat in NH
Existing Transmission Line	Open Water	Rocky ridge or Talus slope	Town Boundaries
Existing Line to be Removed	Delineated Perennial Stream	Wet meadow/shrub wetland	
Proposed Transmission Line	Delineated Intermittent Stream	Sand/Gravel Pit	
Surveyed ROW Boundary	Delineated Ordinary High Water	Upland Shrub	
Primary Access	Ditch	Orchard	
Alternate Access	USGS Stream		

**Wildlife Habitat Land Cover Type Mapping**  
**Merrimack Valley Reliability Project**  
**Tewksbury 22A Substation MA to**  
**Scobie Pond 345kV Substation NH**

Page 14 of 16

Source: NGRID, Black & Veatch, VHB, NHFG  
 Beals & Thomas, EVERSOURCE, Normandeau

Date: 7/13/2015



Existing Structure	Wetland Edge	Appalachian oak-pine	Floodplain forest
Existing Structure to be Removed	Estimated Wetland Edge	Grasslands	Peatland
Proposed Structure	Wetland Resource Area	Hemlock-hardwood-pine	Highest Ranked Habitat in NH
Existing Transmission Line	Open Water	Rocky ridge or Talus slope	Town Boundaries
Existing Line to be Removed	Delineated Perennial Stream	Wet meadow/shrub wetland	
Proposed Transmission Line	Delineated Intermittent Stream	Sand/Gravel Pit	
Surveyed ROW Boundary	Delineated Ordinary High Water	Upland Shrub	
Primary Access	Ditch	Orchard	
Alternate Access	USGS Stream		

**Wildlife Habitat Land Cover Type Mapping**  
**Merrimack Valley Reliability Project**  
**Tewksbury 22A Substation MA to**  
**Scobie Pond 345kV Substation NH**

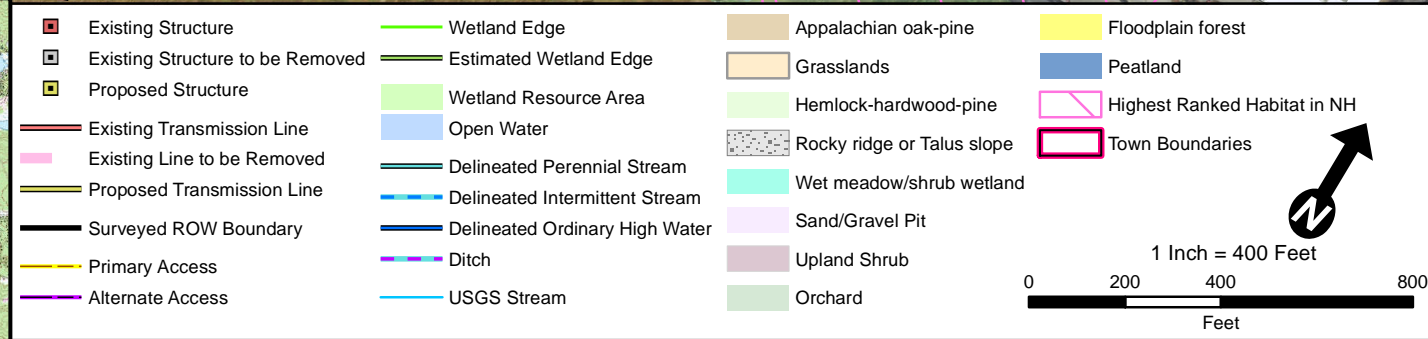
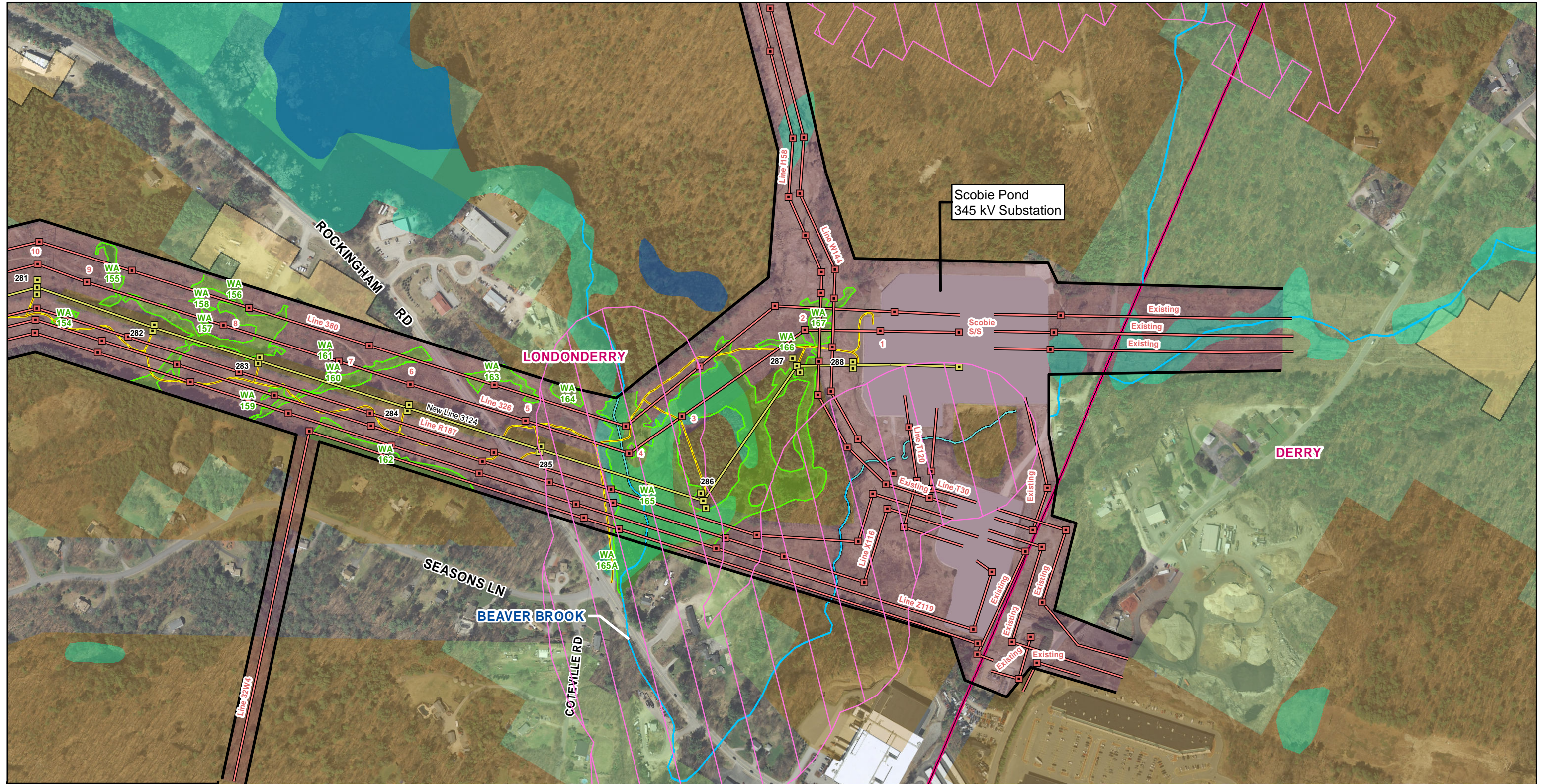
Page 15 of 16

Source:  
 NGRID, Black & Veatch, VHB, NHFG  
 Beals & Thomas, EVERSOURCE, Normandeau

Date: 7/13/2015







**Wildlife Habitat Land Cover Type Mapping  
Merrimack Valley Reliability Project  
Tewksbury 22A Substation MA to  
Scobie Pond 345kV Substation NH**