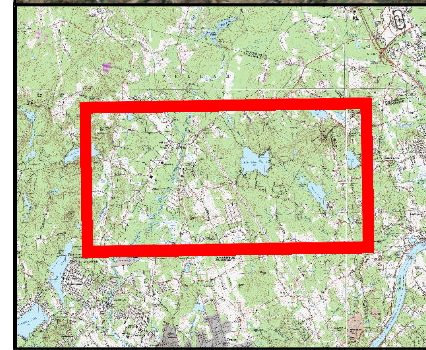
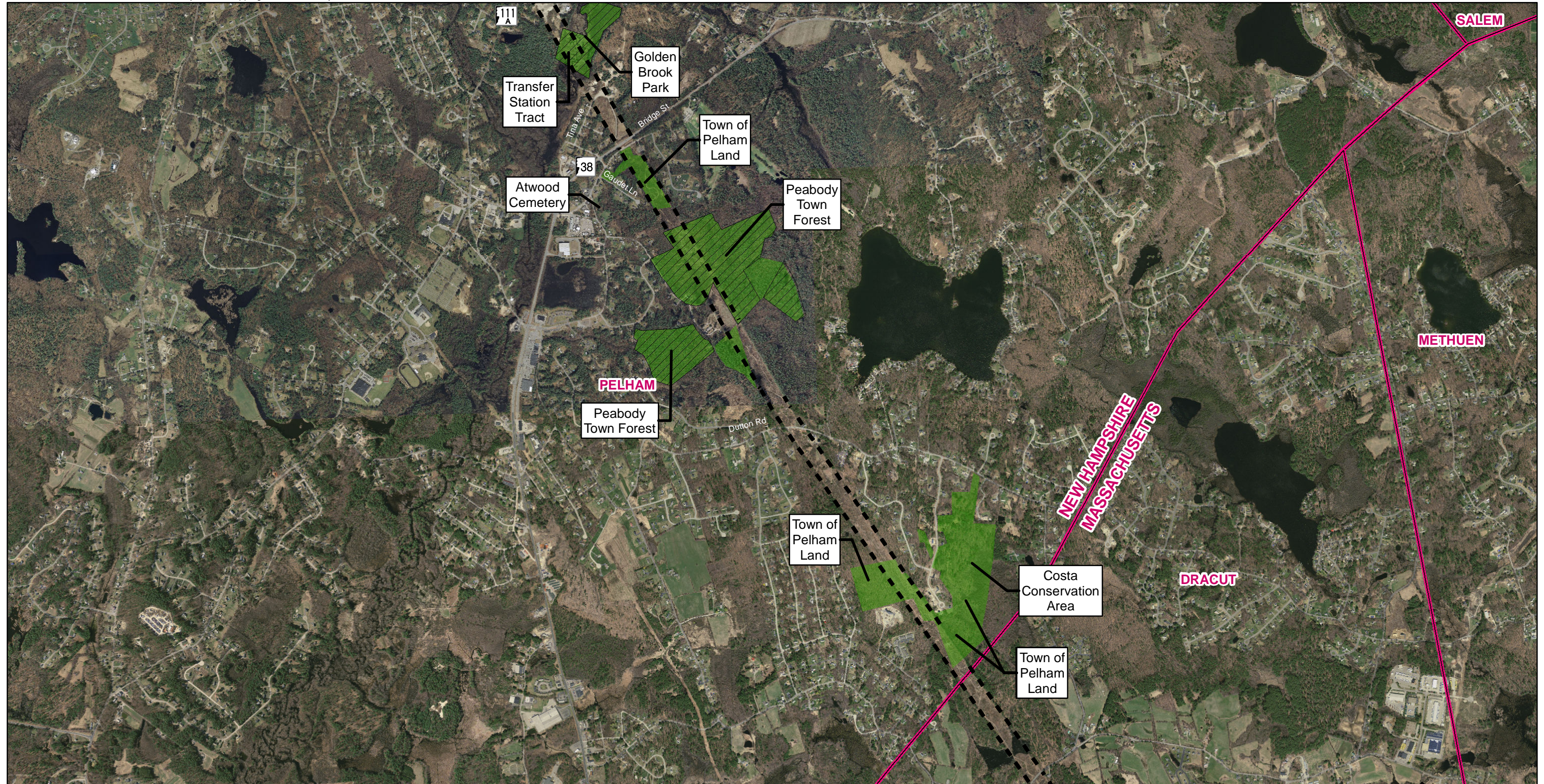



# Appendix M

## Community Resources Mapping

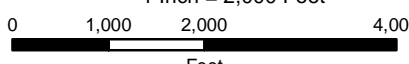




<ul style="list-style-type: none"> <li><span style="display: inline-block; width: 20px; height: 10px; background-color: #90EE90; border: 1px solid black; margin-right: 5px;"></span> Conservation Area</li> <li><span style="display: inline-block; width: 20px; height: 10px; background: repeating-linear-gradient(45deg, transparent, transparent 2px, black 2px, black 4px); border: 1px solid black; margin-right: 5px;"></span> Recreation Area</li> <li><span style="display: inline-block; width: 15px; height: 15px; background-color: white; border: 1px solid black; position: relative; margin-right: 5px;"><span style="position: absolute; top: 50%; left: 50%; transform: translate(-50%, -50%); font-size: 8px;">✠</span></span> Place of Worship</li> <li><span style="display: inline-block; width: 20px; border-top: 2px dashed black; margin-right: 5px;"></span> Surveyed ROW Boundary</li> <li><span style="display: inline-block; width: 20px; height: 10px; border: 2px solid magenta; margin-right: 5px;"></span> Town Boundaries</li> </ul>	<p>Community Resources not within 1000' of ROW:</p> <ul style="list-style-type: none"> <li>- Boat Launch</li> <li>- Correctional Institutions</li> <li>- Fire Stations</li> <li>- Hospitals</li> <li>- Law Enforcement Buildings</li> <li>- Nursing Homes</li> <li>- Public Health Departments</li> </ul>
--	---



1 Inch = 2,000 Feet



0 1,000 2,000 4,000  
Feet

**Community Resources**  
**Merrimack Valley Reliability Project**  
**Tewksbury 22A Substation MA to**  
**Scobie Pond 345 kV Substation NH**

Page 1 of 5

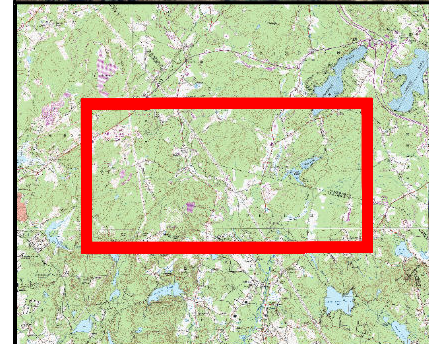
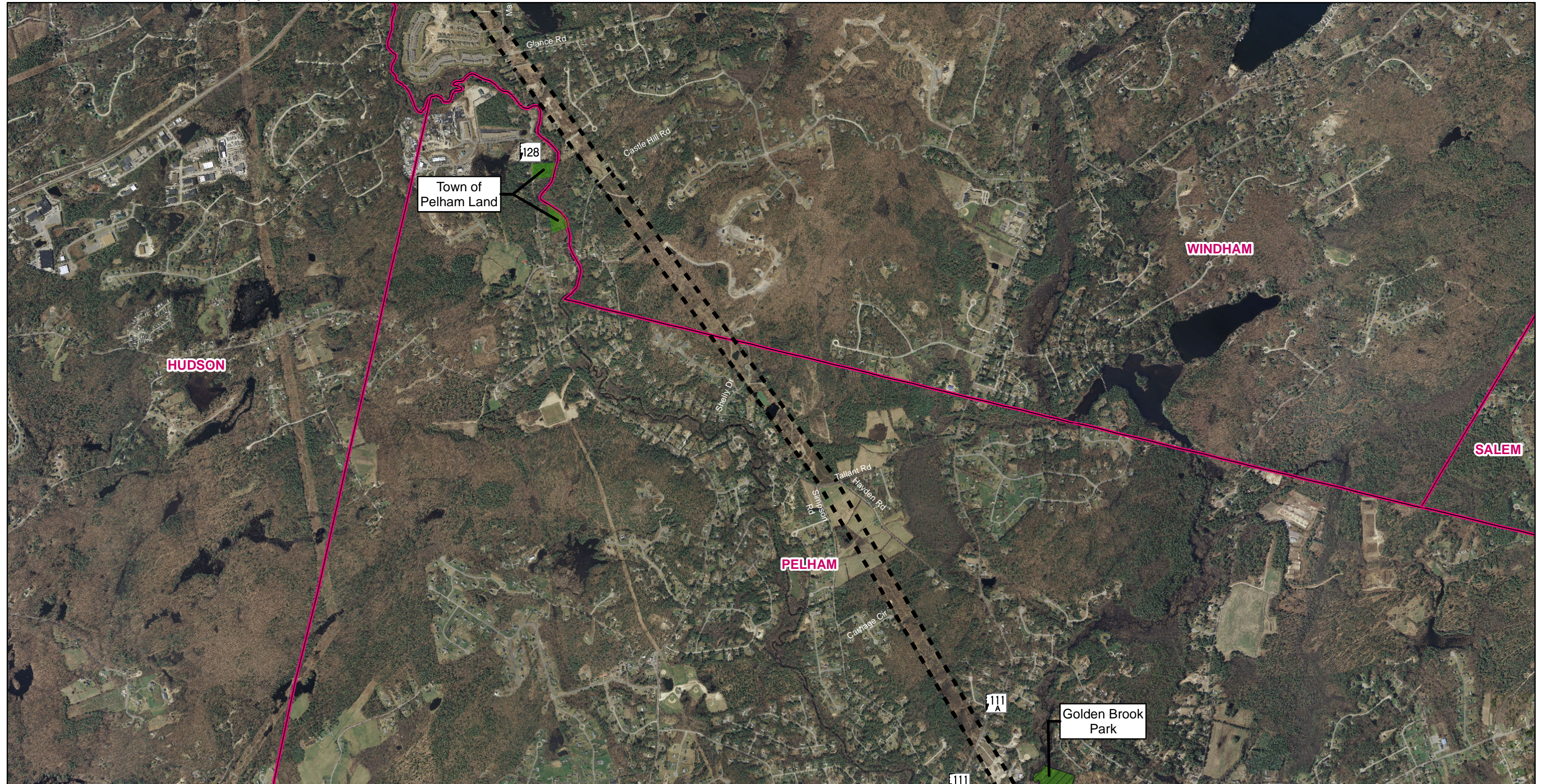
Source:  
 NGRID, Black & Veatch, VHB, NHGRANIT  
 Beals & Thomas, Eversource, Normandeau


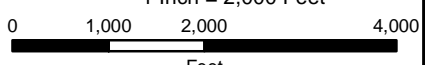
Date: 7/13/2015



---





<ul style="list-style-type: none"> <li><span style="display: inline-block; width: 15px; height: 10px; background-color: #90EE90; border: 1px solid black; margin-right: 5px;"></span> Conservation Area</li> <li><span style="display: inline-block; width: 15px; height: 10px; background: repeating-linear-gradient(45deg, transparent, transparent 2px, black 2px, black 4px); border: 1px solid black; margin-right: 5px;"></span> Recreation Area</li> <li><span style="display: inline-block; width: 15px; height: 10px; background-color: white; border: 1px solid black; margin-right: 5px;"></span> Place of Worship</li> <li><span style="display: inline-block; width: 15px; height: 10px; border-top: 2px dashed black; border-bottom: 2px dashed black; margin-right: 5px;"></span> Surveyed ROW Boundary</li> <li><span style="display: inline-block; width: 15px; height: 10px; border: 2px solid magenta; margin-right: 5px;"></span> Town Boundaries</li> </ul>	<p>Community Resources not within 1000' of ROW:</p> <ul style="list-style-type: none"> <li>- Boat Launch</li> <li>- Correctional Institutions</li> <li>- Fire Stations</li> <li>- Hospitals</li> <li>- Law Enforcement Buildings</li> <li>- Nursing Homes</li> <li>- Public Health Departments</li> </ul>	
		<p>1 Inch = 2,000 Feet</p> 

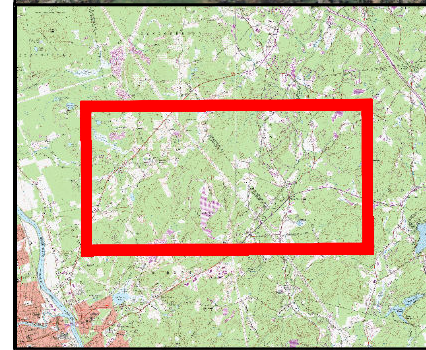
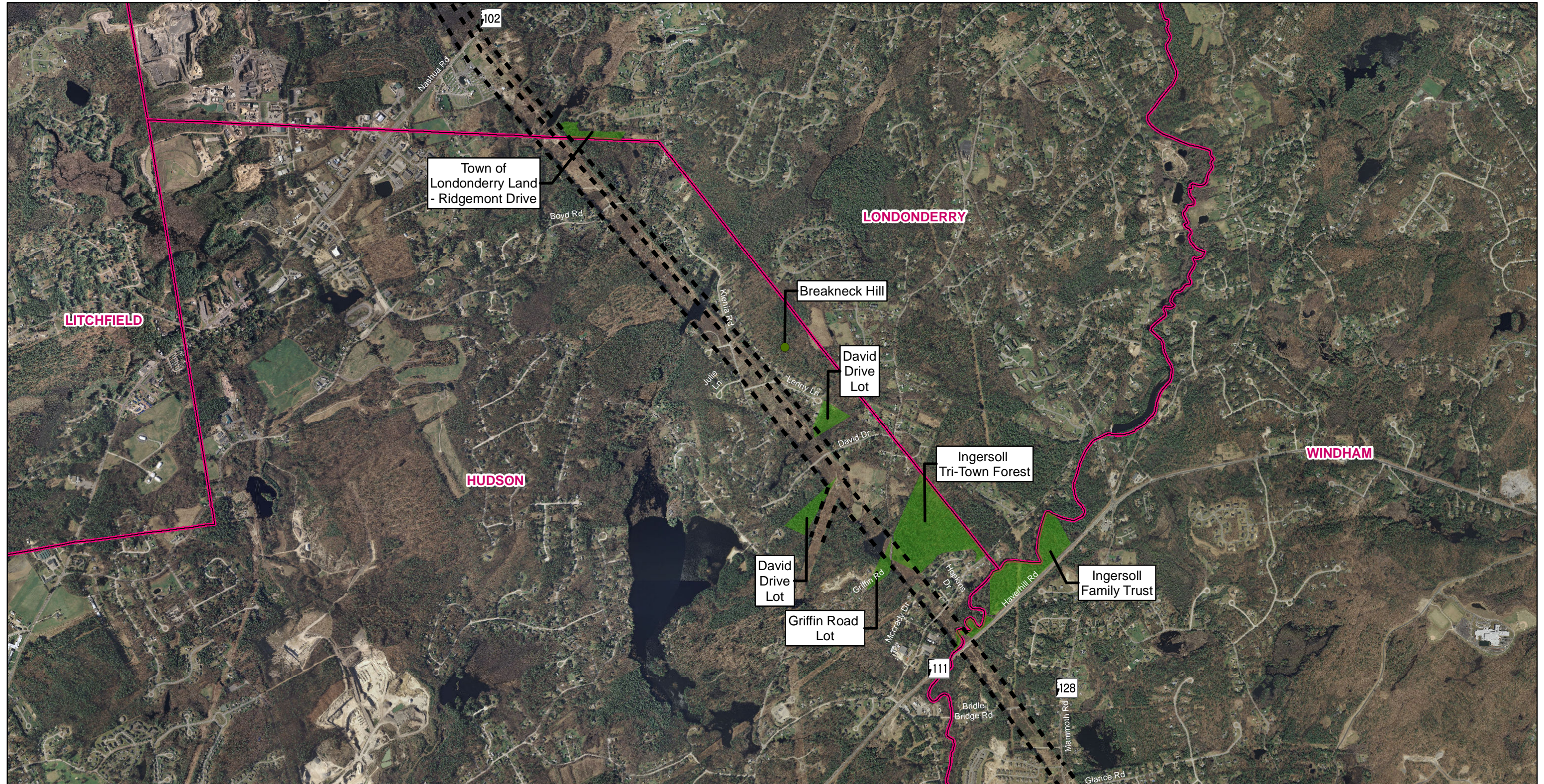
**Community Resources**  
**Merrimack Valley Reliability Project**  
**Tewksbury 22A Substation MA to**  
**Scobie Pond 345 kV Substation NH**

Page 2 of 5

Source:  
 NGRID, Black & Veatch, VHB, NHGRANIT  
 Beals & Thomas, Eversource, Normandeau

Date: 7/13/2015



<ul style="list-style-type: none"> <li><span style="display: inline-block; width: 15px; height: 10px; background-color: #90EE90; border: 1px solid black; margin-right: 5px;"></span> Conservation Area</li> <li><span style="display: inline-block; width: 15px; height: 10px; background: repeating-linear-gradient(45deg, transparent, transparent 2px, black 2px, black 4px); border: 1px solid black; margin-right: 5px;"></span> Recreation Area</li> <li><span style="display: inline-block; width: 15px; height: 10px; background-color: #FFDAB9; border: 1px solid black; margin-right: 5px;"></span> Place of Worship</li> <li><span style="display: inline-block; width: 15px; height: 10px; border-top: 2px dashed black; border-bottom: 2px dashed black; margin-right: 5px;"></span> Surveyed ROW Boundary</li> <li><span style="display: inline-block; width: 15px; height: 10px; border: 2px solid pink; margin-right: 5px;"></span> Town Boundaries</li> </ul>	<p>Community Resources not within 1000' of ROW:</p> <ul style="list-style-type: none"> <li>- Boat Launch</li> <li>- Correctional Institutions</li> <li>- Fire Stations</li> <li>- Hospitals</li> <li>- Law Enforcement Buildings</li> <li>- Nursing Homes</li> <li>- Public Health Departments</li> </ul>
---	---

1 Inch = 2,000 Feet

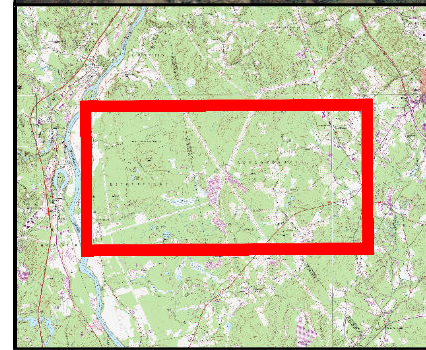
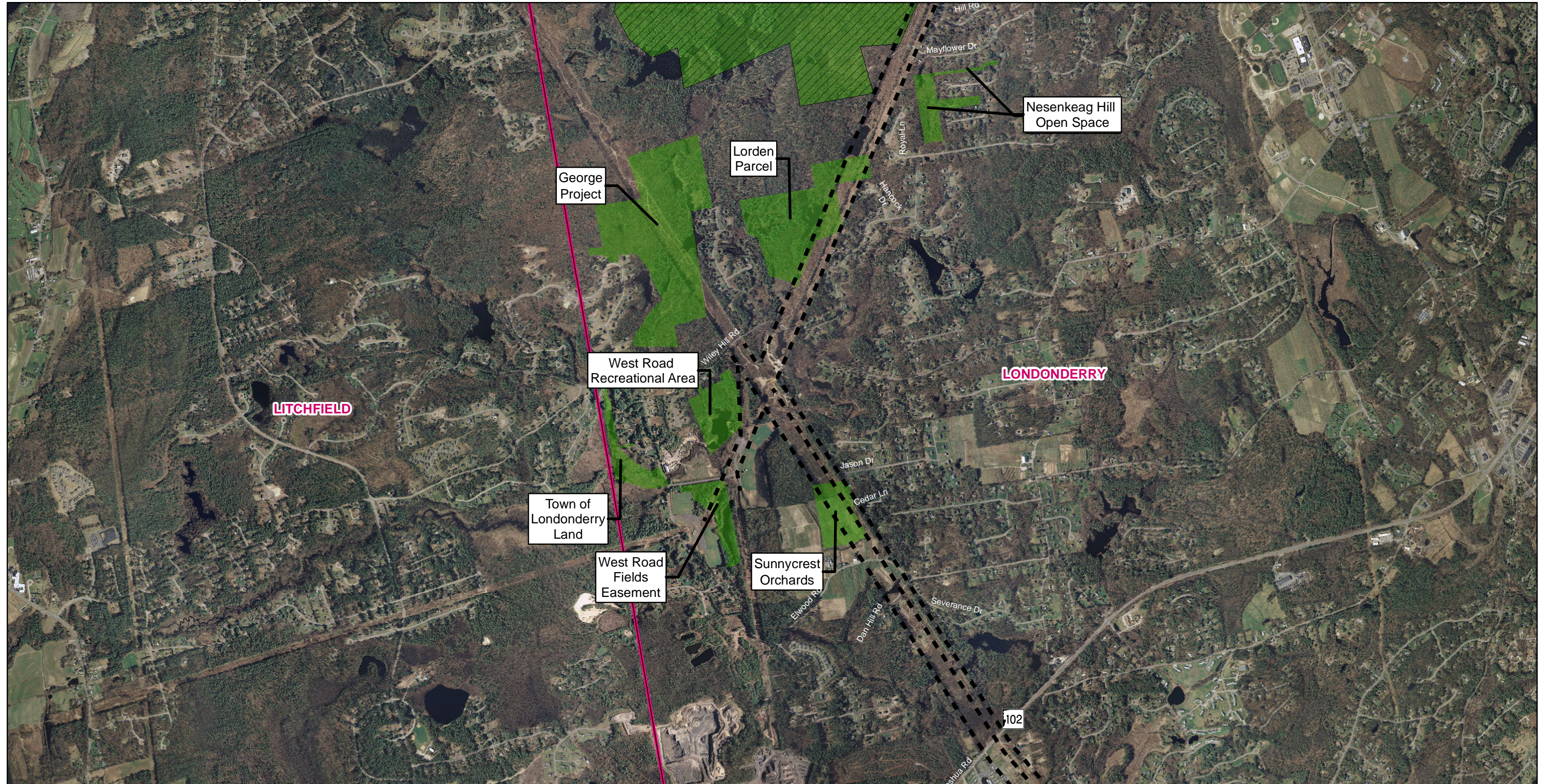
**Community Resources**  
**Merrimack Valley Reliability Project**  
**Tewksbury 22A Substation MA to**  
**Scobie Pond 345 kV Substation NH**


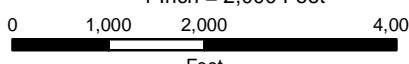
Page 3 of 5

Source:  
 NGRID, Black & Veatch, VHB, NHGRANIT  
 Beals & Thomas, Eversource, Normandeau

Date: 7/13/2015





<ul style="list-style-type: none"> <li><span style="display: inline-block; width: 15px; height: 10px; background-color: #90EE90; border: 1px solid black; margin-right: 5px;"></span> Conservation Area</li> <li><span style="display: inline-block; width: 15px; height: 10px; background: repeating-linear-gradient(45deg, transparent, transparent 2px, black 2px, black 4px); border: 1px solid black; margin-right: 5px;"></span> Recreation Area</li> <li><span style="display: inline-block; width: 10px; height: 10px; background-color: white; border: 1px solid black; position: relative; margin-right: 5px;"><div style="position: absolute; top: 5px; left: 5px; width: 3px; height: 3px; background-color: red;"></div></span> Place of Worship</li> <li><span style="display: inline-block; width: 15px; border-bottom: 2px dashed black; margin-right: 5px;"></span> Surveyed ROW Boundary</li> <li><span style="display: inline-block; width: 15px; border-bottom: 2px solid pink; margin-right: 5px;"></span> Town Boundaries</li> </ul>	<p>Community Resources not within 1000' of ROW:</p> <ul style="list-style-type: none"> <li>- Boat Launch</li> <li>- Correctional Institutions</li> <li>- Fire Stations</li> <li>- Hospitals</li> <li>- Law Enforcement Buildings</li> <li>- Nursing Homes</li> <li>- Public Health Departments</li> </ul>	 <p>1 Inch = 2,000 Feet</p> 
--	---	--

**Community Resources**  
**Merrimack Valley Reliability Project**  
**Tewksbury 22A Substation MA to**  
**Scobie Pond 345 kV Substation NH**

Page 4 of 5

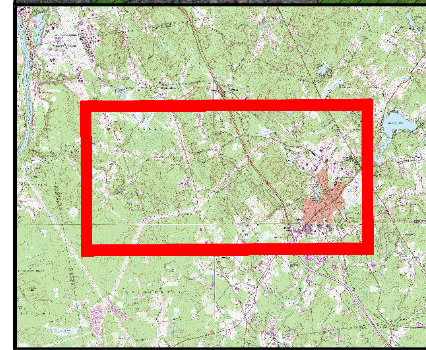
Source:  
 NGRID, Black & Veatch, VHB, NHGRANIT  
 Beals & Thomas, Eversource, Normandeau


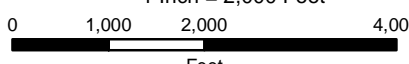
Date: 7/13/2015



---





<ul style="list-style-type: none"> <li><span style="display: inline-block; width: 15px; height: 10px; background-color: #90EE90; border: 1px solid black; margin-right: 5px;"></span> Conservation Area</li> <li><span style="display: inline-block; width: 15px; height: 10px; background: repeating-linear-gradient(45deg, transparent, transparent 2px, black 2px, black 4px); border: 1px solid black; margin-right: 5px;"></span> Recreation Area</li> <li><span style="display: inline-block; width: 15px; height: 10px; background-color: white; border: 1px solid black; margin-right: 5px;"></span> Place of Worship</li> <li><span style="display: inline-block; width: 15px; height: 10px; border-top: 2px dashed black; border-bottom: 2px dashed black; margin-right: 5px;"></span> Surveyed ROW Boundary</li> <li><span style="display: inline-block; width: 15px; height: 10px; border: 2px solid magenta; margin-right: 5px;"></span> Town Boundaries</li> </ul>	<p>Community Resources not within 1000' of ROW:</p> <ul style="list-style-type: none"> <li>- Boat Launch</li> <li>- Correctional Institutions</li> <li>- Fire Stations</li> <li>- Hospitals</li> <li>- Law Enforcement Buildings</li> <li>- Nursing Homes</li> <li>- Public Health Departments</li> </ul>	
<p>1 Inch = 2,000 Feet</p> 		

**Community Resources**  
**Merrimack Valley Reliability Project**  
**Tewksbury 22A Substation MA to**  
**Scobie Pond 345 kV Substation NH**

Source:  
 NGRID, Black & Veatch, VHB, NHGRANIT  
 Beals & Thomas, Eversource, Normandeau

