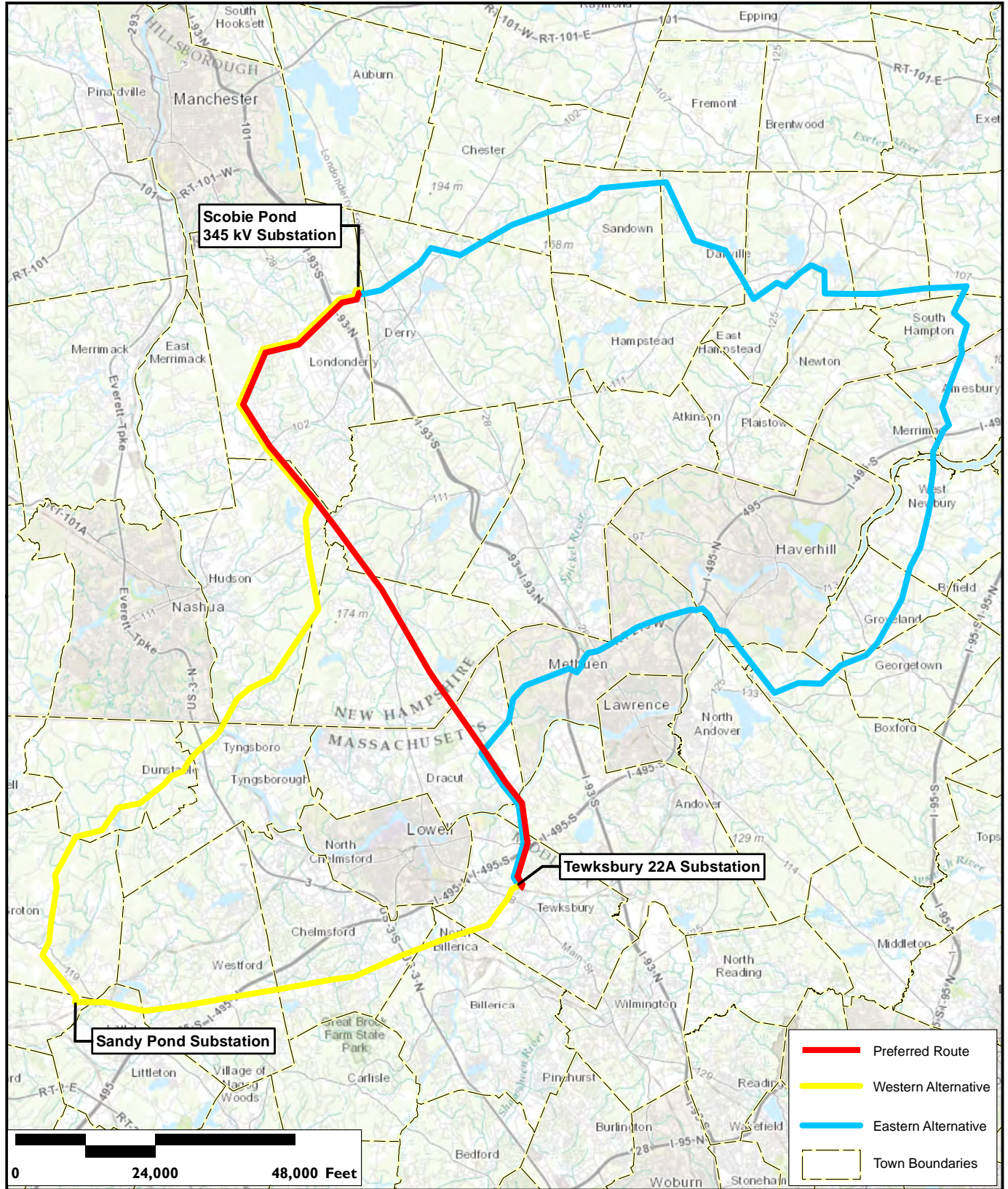


Appendix V

Route Maps for Western Alternative and Eastern Alternative





↑
Scale:
1 inch = 24,000 feet
Source:
ArcGIS Online

MERRIMACK VALLEY RELIABILITY PROJECT
Preferred Route and Alternative Locations
New 345kV 3124 Scobie Pond - Tewksbury Line
Tewksbury 22A Substation, MA to Scobie Pond 345 kV Substation, NH
June 2015

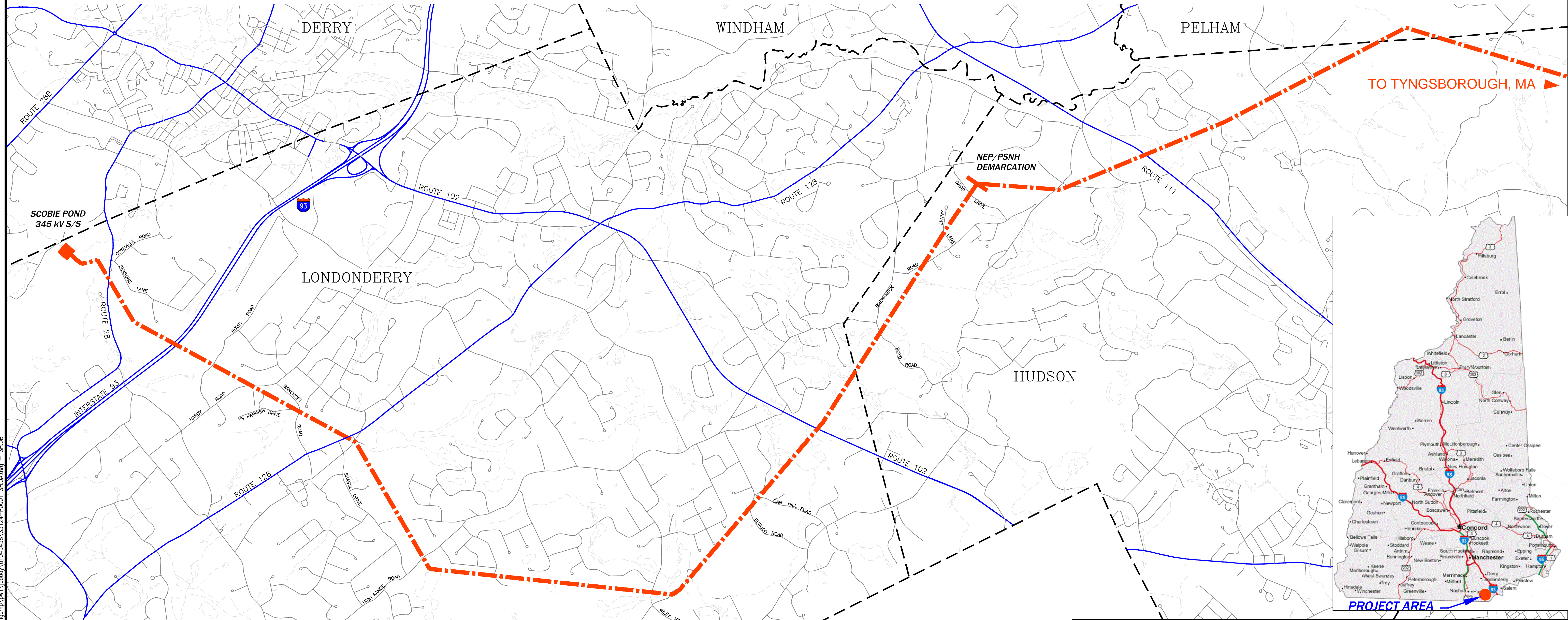
nationalgrid

EVERSOURCE
ENERGY

EVERSOURCE MERRIMACK VALLEY RELIABILITY PROJECT

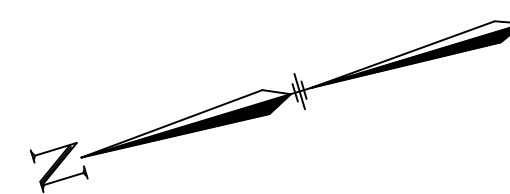
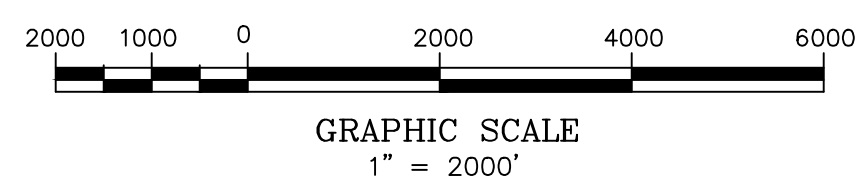
LINE 3124 345 kV TRANSMISSION

KEY SHEET - WESTERN ALTERNATIVE



LEGEND:

--- DENOTES TRANSMISSION LINE



CONTRACT SERVICES	DESCRIPTION	ENG/PE#	DATE	DRN	CHKD	APPR
C	ISSUED FOR NHSEC PERMIT		6/11/15	RDW	CRP	GEL
B	ISSUED FOR REVIEW - OPTION 4 ADDED		3/13/15	JJD	CRP	GEL
A	ISSUED FOR REVIEW		1/23/15	JJD	CRP	GEL
REV						



LINE 3124 345 kV TRANSMISSION
KEY SHEET
MERRIMACK VALLEY RELIABILITY PROJECT
WESTERN ALTERNATIVE

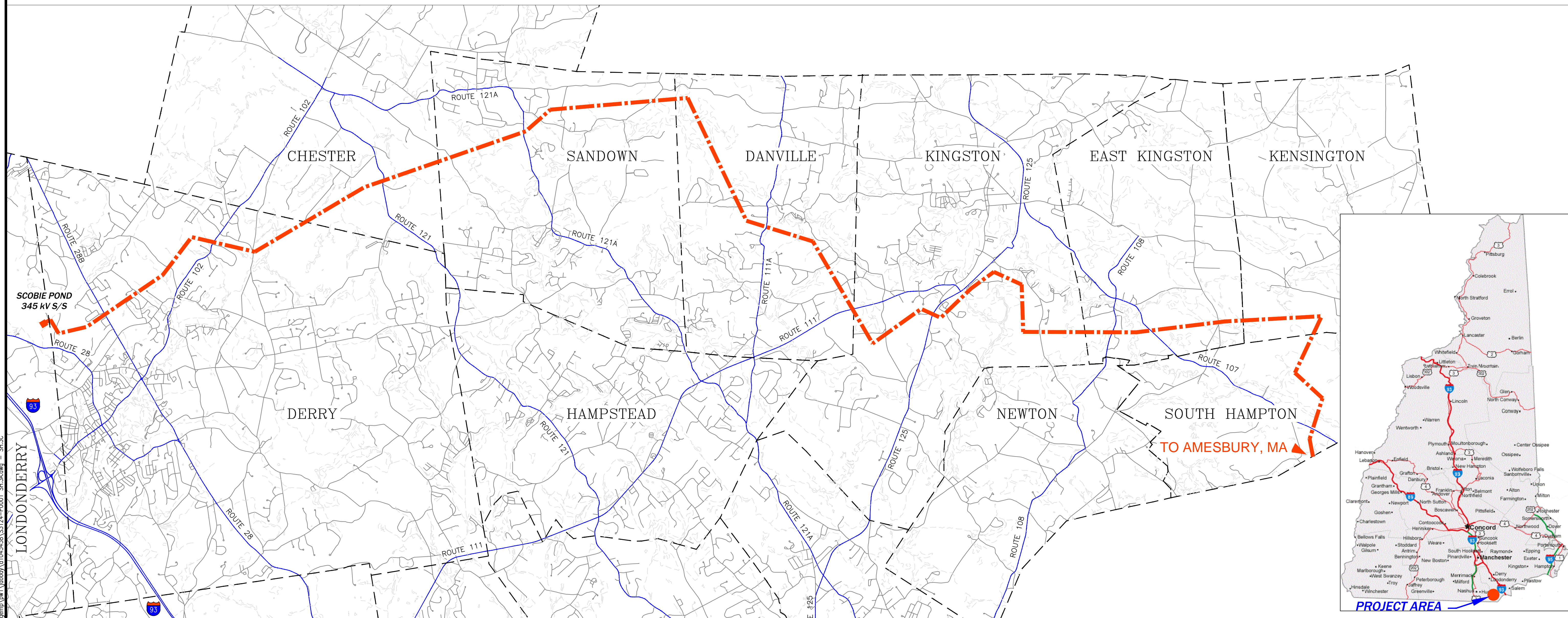
SCALE: NTS
FILE: S3124-P0001 SH.3A.DWG
DRAWING NO.: S3124-P0001 SH.3B

X	X
DRAWN	JJD/TRC
ENGINEER	GEL/TRC
CHECKED	CRP/TRC
APPROVED	GEL/TRC
DATE	01/23/15

EVERSOURCE MERRIMACK VALLEY RELIABILITY PROJECT

LINE 3124 345 KV TRANSMISSION

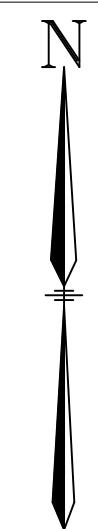
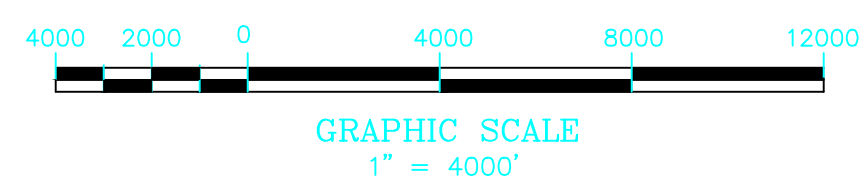
KEY SHEET - EASTERN ALTERNATIVE



6/11/2015 2:57 PM - f00dy - C:\pwworking\pwworking\1\1045458\S3124-P001_SH.3A.dwg - SH.3C

LEGEND:

- - - - - DENOTES TRANSMISSION LINE



CONTRACT SERVICES	DESCRIPTION	ENG/PE#	DATE	DRN	CHKD	APPR
C	ISSUED FOR NHSEC PERMIT	-	6/11/15	RDW	CRP	GEL
B	ISSUED FOR REVIEW - OPTION 4 ADDED	-	3/13/15	JJD	CRP	GEL
A	ISSUED FOR REVIEW	-	1/23/15	JJD	CRP	GEL



LINE 3124 345 kV TRANSMISSION
KEY SHEET
MERRIMACK VALLEY RELIABILITY PROJECT
EASTERN ALTERNATIVE

SCALE: NTS
FILE: S3124-P001_SH.3A.DWG
DRAWING NO.: S3124-P001 SH.3C

X	X
JJD/TRC	ENGINEER
GEL/TRC	ENGINEER
CRP/TRC	CHECKED
GEL/TRC	APPROVED
DATE	01/23/15