

# Attachment A

## Revised Existing Conditions Mapping

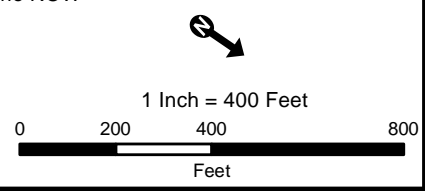




Revised: 2/9/2016



Existing Transmission Line	Delineated Perennial Stream	Vernal Pool	Surveyed ROW Boundary
Wetland Edge	Delineated Intermittent Stream	NHDES Prime Wetland	Parcel Boundary
Estimated Wetland Edge	Delineated Ordinary High Water	Gas Pipeline ROW	Town Boundaries
Estimated Wetland Edge (within 100ft of ROW)	Estimated Intermittent Stream	Abandoned Oil Pipeline ROW	
Wetland Resource Area	Estimated Perennial Stream	Gas Pipeline ROW	
Open Water	Estimated Wetland	Sewer Line ROW	
NWI Wetland	Estimated Open Water		
USGS Stream			



Existing Conditions  
Merrimack Valley Reliability Project  
Tewksbury 22A Substation MA to  
Scobie Pond 345 kV Substation NH





Revised: 2/9/2016



Existing Transmission Line	Delineated Perennial Stream	Vernal Pool	Surveyed ROW Boundary
Wetland Edge	Delineated Intermittent Stream	NHDES Prime Wetland	Parcel Boundary
Estimated Wetland Edge	Delineated Ordinary High Water	Gas Pipeline ROW	Town Boundaries
Estimated Wetland Edge (within 100ft of ROW)	Estimated Intermittent Stream	Abandoned Oil Pipeline ROW	
Wetland Resource Area	Estimated Perennial Stream	Gas Pipeline ROW	
Open Water	Estimated Wetland	Sewer Line ROW	
NWI Wetland	Estimated Open Water		
USGS Stream			

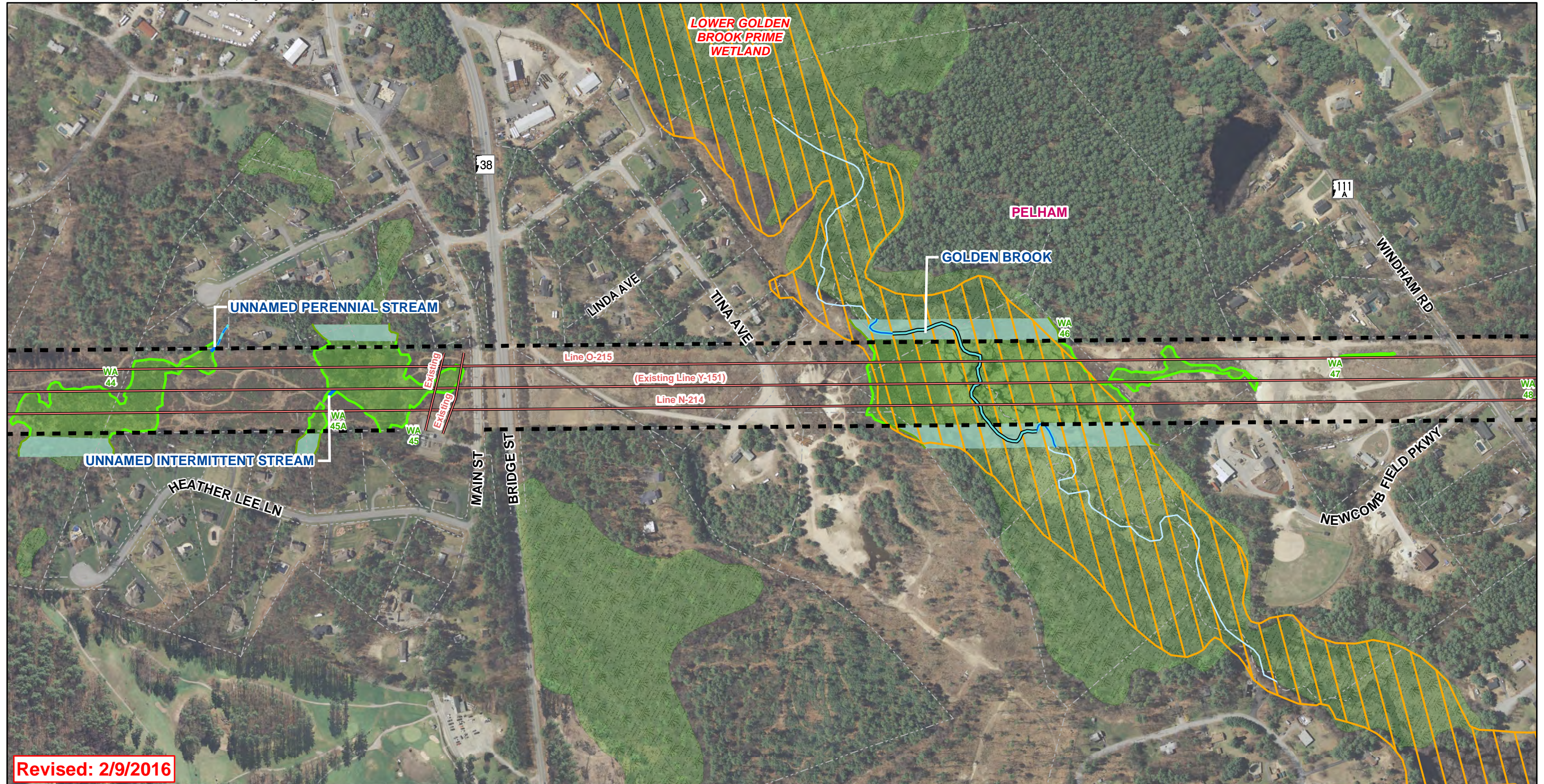
Existing Conditions  
Merrimack Valley Reliability Project  
Tewksbury 22A Substation MA to  
Scobie Pond 345 kV Substation NH

Page 2 of 16

1 Inch = 400 Feet

Source:  
NGRID, Black & Veatch, VHB  
Beals & Thomas, Eversource, Normandeau

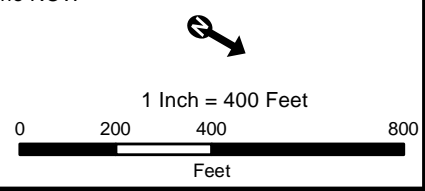
Date: 7/13/2015



Revised: 2/9/2016



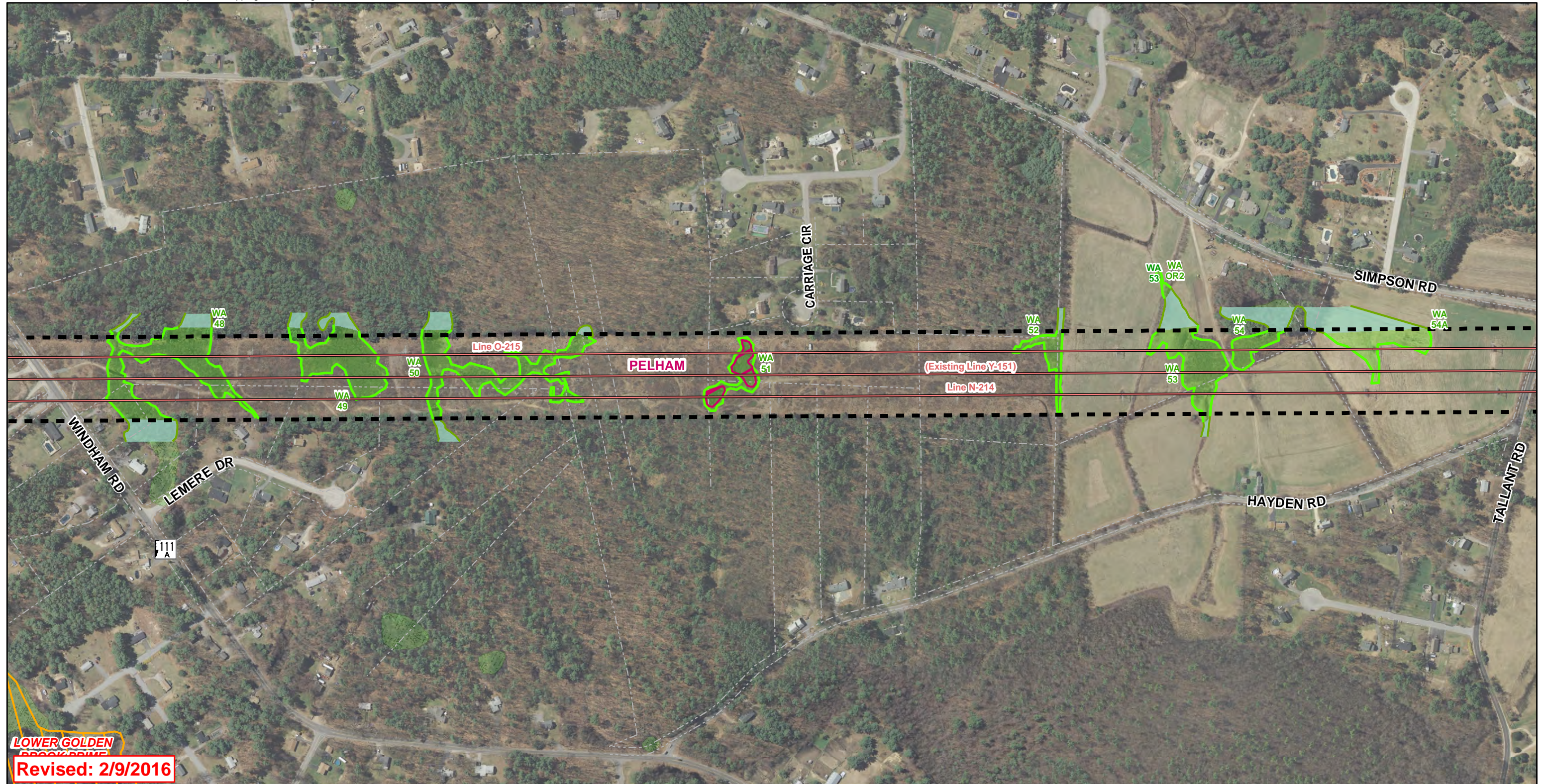
Existing Transmission Line	Delineated Perennial Stream	Vernal Pool	Surveyed ROW Boundary
Wetland Edge	Delineated Intermittent Stream	NHDES Prime Wetland	Parcel Boundary
Estimated Wetland Edge	Delineated Ordinary High Water	Gas Pipeline ROW	Town Boundaries
Estimated Wetland Edge (within 100ft of ROW)	Estimated Intermittent Stream	Abandoned Oil Pipeline ROW	
Wetland Resource Area	Estimated Perennial Stream	Gas Pipeline ROW	
Open Water	Estimated Wetland	Sewer Line ROW	
NWI Wetland	Estimated Open Water		
USGS Stream			



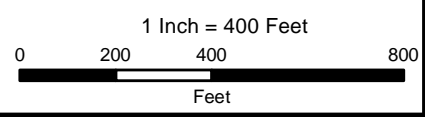
Existing Conditions  
Merrimack Valley Reliability Project  
Tewksbury 22A Substation MA to  
Scobie Pond 345 kV Substation NH

Source:  
NGRID, Black & Veatch, VHB  
Beals & Thomas, Eversource, Normandeau





Existing Transmission Line	Delineated Perennial Stream	Vernal Pool	Surveyed ROW Boundary
Wetland Edge	Delineated Intermittent Stream	NHDES Prime Wetland	Parcel Boundary
Estimated Wetland Edge	Delineated Ordinary High Water	Gas Pipeline ROW	Town Boundaries
Estimated Wetland Edge (within 100ft of ROW)	Estimated Intermittent Stream	Abandoned Oil Pipeline ROW	
Wetland Resource Area	Estimated Perennial Stream	Gas Pipeline ROW	
Open Water	Estimated Wetland	Sewer Line ROW	
NWI Wetland	Estimated Open Water		
USGS Stream			



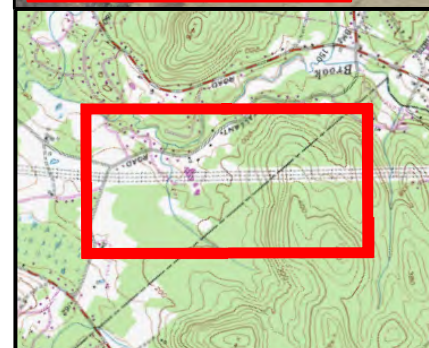
Existing Conditions  
 Merrimack Valley Reliability Project  
 Tewksbury 22A Substation MA to  
 Scobie Pond 345 kV Substation NH

Source:  
 NGRID, Black & Veatch, VHB  
 Beals & Thomas, Eversource, Normandeau

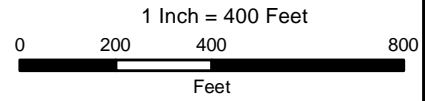




Revised: 2/9/2016



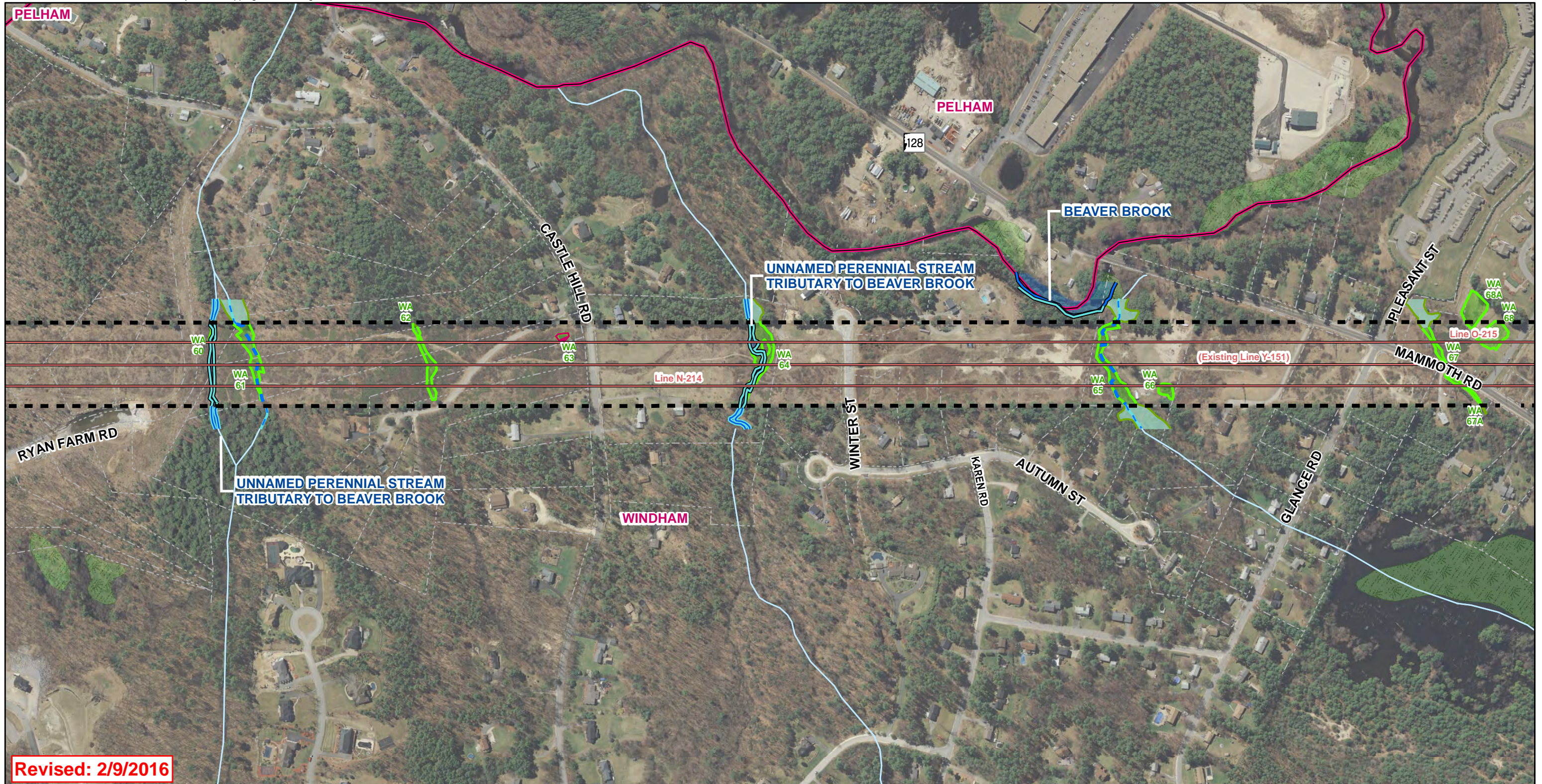
Existing Transmission Line	Delineated Perennial Stream	Vernal Pool	Surveyed ROW Boundary
Wetland Edge	Delineated Intermittent Stream	NHDES Prime Wetland	Parcel Boundary
Estimated Wetland Edge	Delineated Ordinary High Water	Gas Pipeline ROW	Town Boundaries
Estimated Wetland Edge (within 100ft of ROW)	Estimated Intermittent Stream	Abandoned Oil Pipeline ROW	
Wetland Resource Area	Estimated Perennial Stream	Gas Pipeline ROW	
Open Water	Estimated Wetland	Sewer Line ROW	
NWI Wetland	Estimated Open Water		
USGS Stream			



Existing Conditions  
Merrimack Valley Reliability Project  
Tewksbury 22A Substation MA to  
Scobie Pond 345 kV Substation NH

Source:  
NGRID, Black & Veatch, VHB  
Beals & Thomas, Eversource, Normandeau

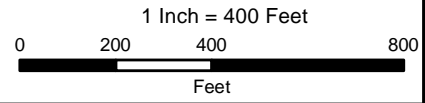




Revised: 2/9/2016



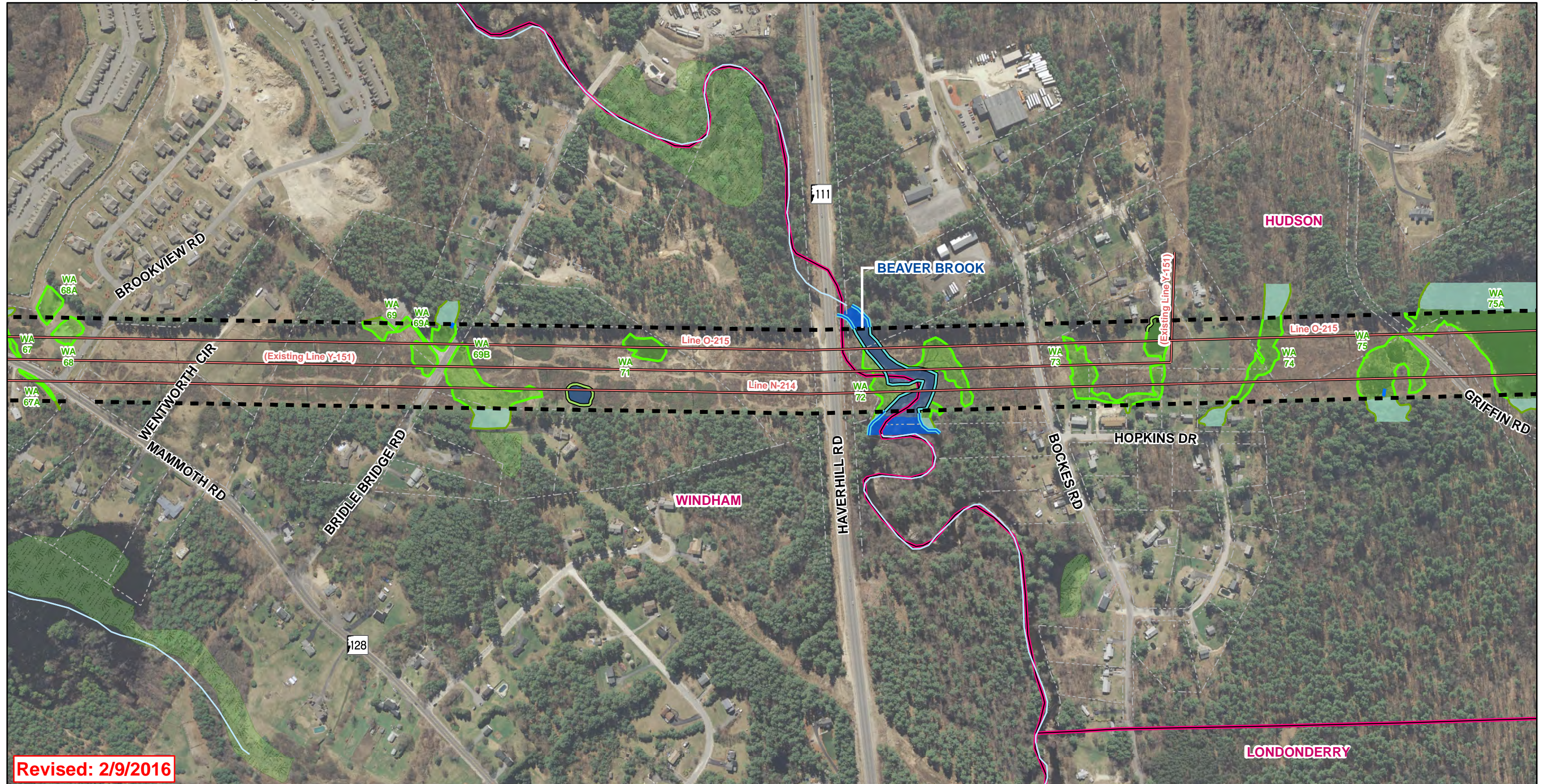
Existing Transmission Line	Delineated Perennial Stream	Vernal Pool	Surveyed ROW Boundary
Wetland Edge	Delineated Intermittent Stream	NHDES Prime Wetland	Parcel Boundary
Estimated Wetland Edge	Delineated Ordinary High Water	Gas Pipeline ROW	Town Boundaries
Estimated Wetland Edge (within 100ft of ROW)	Estimated Intermittent Stream	Abandoned Oil Pipeline ROW	
Wetland Resource Area	Estimated Perennial Stream	Gas Pipeline ROW	
Open Water	Estimated Wetland	Sewer Line ROW	
NWI Wetland	Estimated Open Water		
USGS Stream			



Existing Conditions  
Merrimack Valley Reliability Project  
Tewksbury 22A Substation MA to  
Scobie Pond 345 kV Substation NH

Source:  
NGRID, Black & Veatch, VHB  
Beals & Thomas, Eversource, Normandeau





Revised: 2/9/2016



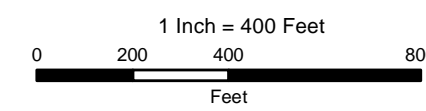
Existing Transmission Line	Delineated Perennial Stream	Vernal Pool	Surveyed ROW Boundary
Wetland Edge	Delineated Intermittent Stream	NHDES Prime Wetland	Parcel Boundary
Estimated Wetland Edge	Delineated Ordinary High Water	Gas Pipeline ROW	Town Boundaries
Estimated Wetland Edge (within 100ft of ROW)	Estimated Intermittent Stream	Abandoned Oil Pipeline ROW	
Wetland Resource Area	Estimated Perennial Stream	Gas Pipeline ROW	
Open Water	Estimated Wetland	Sewer Line ROW	
NWI Wetland	Estimated Open Water		
USGS Stream			

Existing Conditions  
Merrimack Valley Reliability Project  
Tewksbury 22A Substation MA to  
Scobie Pond 345 kV Substation NH

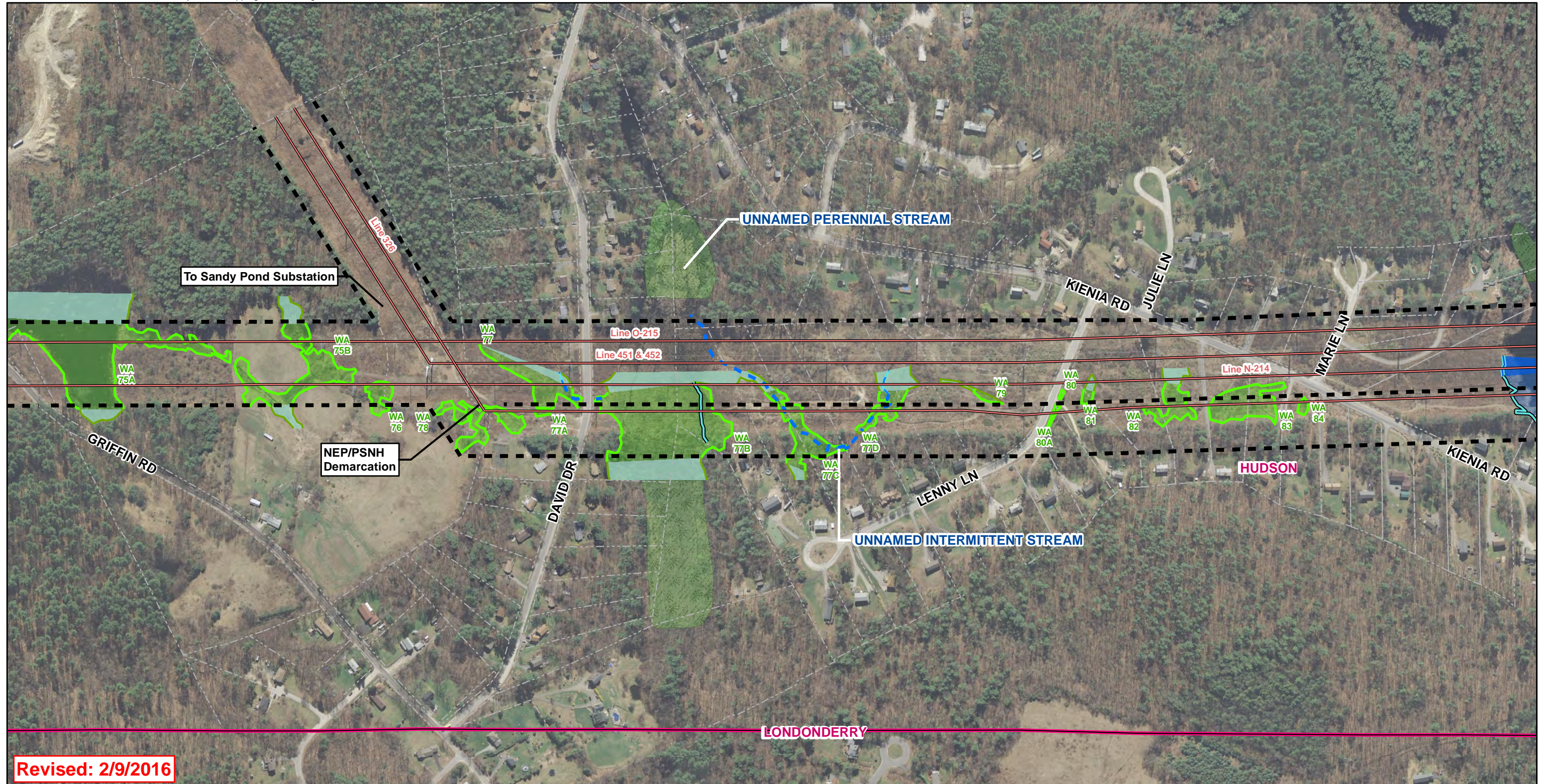
Page 7 of 16

Source:  
NGRID, Black & Veatch, VHB  
Beals & Thomas, Eversource, Normandeau

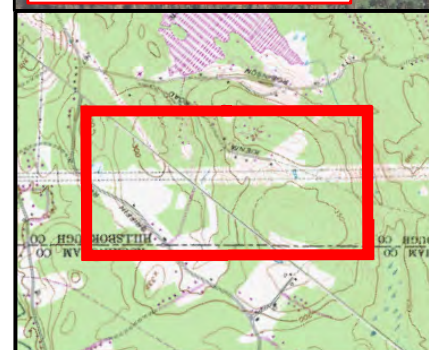
Date: 7/13/2015



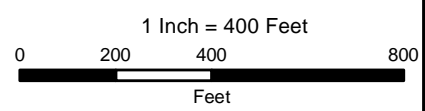




Revised: 2/9/2016



Existing Transmission Line	Delineated Perennial Stream	Vernal Pool	Surveyed ROW Boundary
Wetland Edge	Delineated Intermittent Stream	NHDES Prime Wetland	Parcel Boundary
Estimated Wetland Edge	Delineated Ordinary High Water	Gas Pipeline ROW	Town Boundaries
Estimated Wetland Edge (within 100ft of ROW)	Estimated Intermittent Stream	Abandoned Oil Pipeline ROW	
Wetland Resource Area	Estimated Perennial Stream	Gas Pipeline ROW	
Open Water	Estimated Wetland	Sewer Line ROW	
NWI Wetland	Estimated Open Water		
USGS Stream			



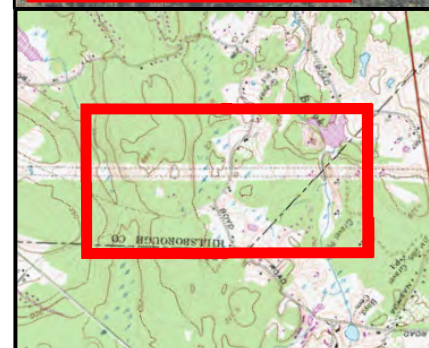
Existing Conditions  
Merrimack Valley Reliability Project  
Tewksbury 22A Substation MA to  
Scobie Pond 345 kV Substation NH

Source:  
NGRID, Black & Veatch, VHB  
Beals & Thomas, Eversource, Normandeau

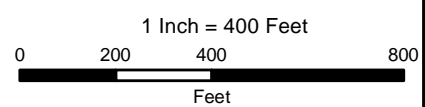




Revised: 2/9/2016



Existing Transmission Line	Delineated Perennial Stream	Vernal Pool	Surveyed ROW Boundary
Wetland Edge	Delineated Intermittent Stream	NHDES Prime Wetland	Parcel Boundary
Estimated Wetland Edge	Delineated Ordinary High Water	Gas Pipeline ROW	Town Boundaries
Estimated Wetland Edge (within 100ft of ROW)	Estimated Intermittent Stream	Abandoned Oil Pipeline ROW	
Wetland Resource Area	Estimated Perennial Stream	Gas Pipeline ROW	
Open Water	Estimated Wetland	Sewer Line ROW	
NWI Wetland	Estimated Open Water		
USGS Stream			



Existing Conditions  
Merrimack Valley Reliability Project  
Tewksbury 22A Substation MA to  
Scobie Pond 345 kV Substation NH

Source:  
NGRID, Black & Veatch, VHB  
Beals & Thomas, Eversource, Normandeau

Date: 7/13/2015





Revised: 2/9/2016



— Existing Transmission Line	— Delineated Perennial Stream	▭ Vernal Pool	— Surveyed ROW Boundary
— Wetland Edge	— Delineated Intermittent Stream	▭ NHDES Prime Wetland	— Parcel Boundary
— Estimated Wetland Edge	— Delineated Ordinary High Water	— Gas Pipeline ROW	▭ Town Boundaries
— Estimated Wetland Edge (within 100ft of ROW)	— Estimated Intermittent Stream	— Abandoned Oil Pipeline ROW	
— Wetland Resource Area	— Estimated Perennial Stream	— Gas Pipeline ROW	
— Open Water	— Estimated Wetland	— Sewer Line ROW	
— NWI Wetland	— Estimated Open Water		
— USGS Stream			

1 Inch = 400 Feet

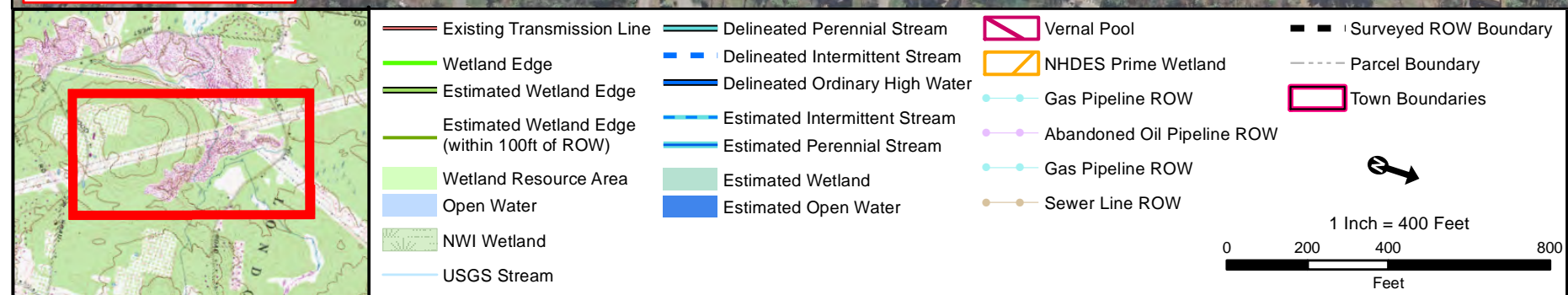
0 200 400 800 Feet

Existing Conditions  
 Merrimack Valley Reliability Project  
 Tewksbury 22A Substation MA to  
 Scobie Pond 345 kV Substation NH





**Revised: 2/9/2016**



Existing Conditions  
 Merrimack Valley Reliability Project  
 Tewksbury 22A Substation MA to  
 Scobie Pond 345 kV Substation NH

Source:  
 NGRID, Black & Veatch, VHB  
 Beals & Thomas, Eversource, Normandeau

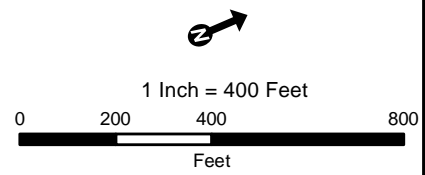




**Revised: 2/9/2016**



— Existing Transmission Line	— Delineated Perennial Stream	▭ Vernal Pool	— Surveyed ROW Boundary
— Wetland Edge	— Delineated Intermittent Stream	▭ NHDES Prime Wetland	--- Parcel Boundary
— Estimated Wetland Edge	— Delineated Ordinary High Water	— Gas Pipeline ROW	▭ Town Boundaries
— Estimated Wetland Edge (within 100ft of ROW)	— Estimated Intermittent Stream	— Abandoned Oil Pipeline ROW	
— Wetland Resource Area	— Estimated Perennial Stream	— Gas Pipeline ROW	
— Open Water	— Estimated Wetland	— Sewer Line ROW	
— NWI Wetland	— Estimated Open Water		
— USGS Stream			



Existing Conditions  
Merrimack Valley Reliability Project  
Tewksbury 22A Substation MA to  
Scobie Pond 345 kV Substation NH

Source:  
NGRID, Black & Veatch, VHB  
Beals & Thomas, Eversource, Normandeau

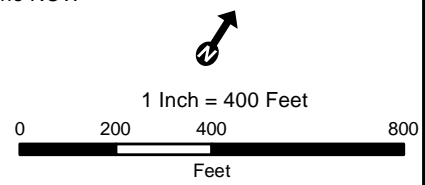




Revised: 2/9/2016



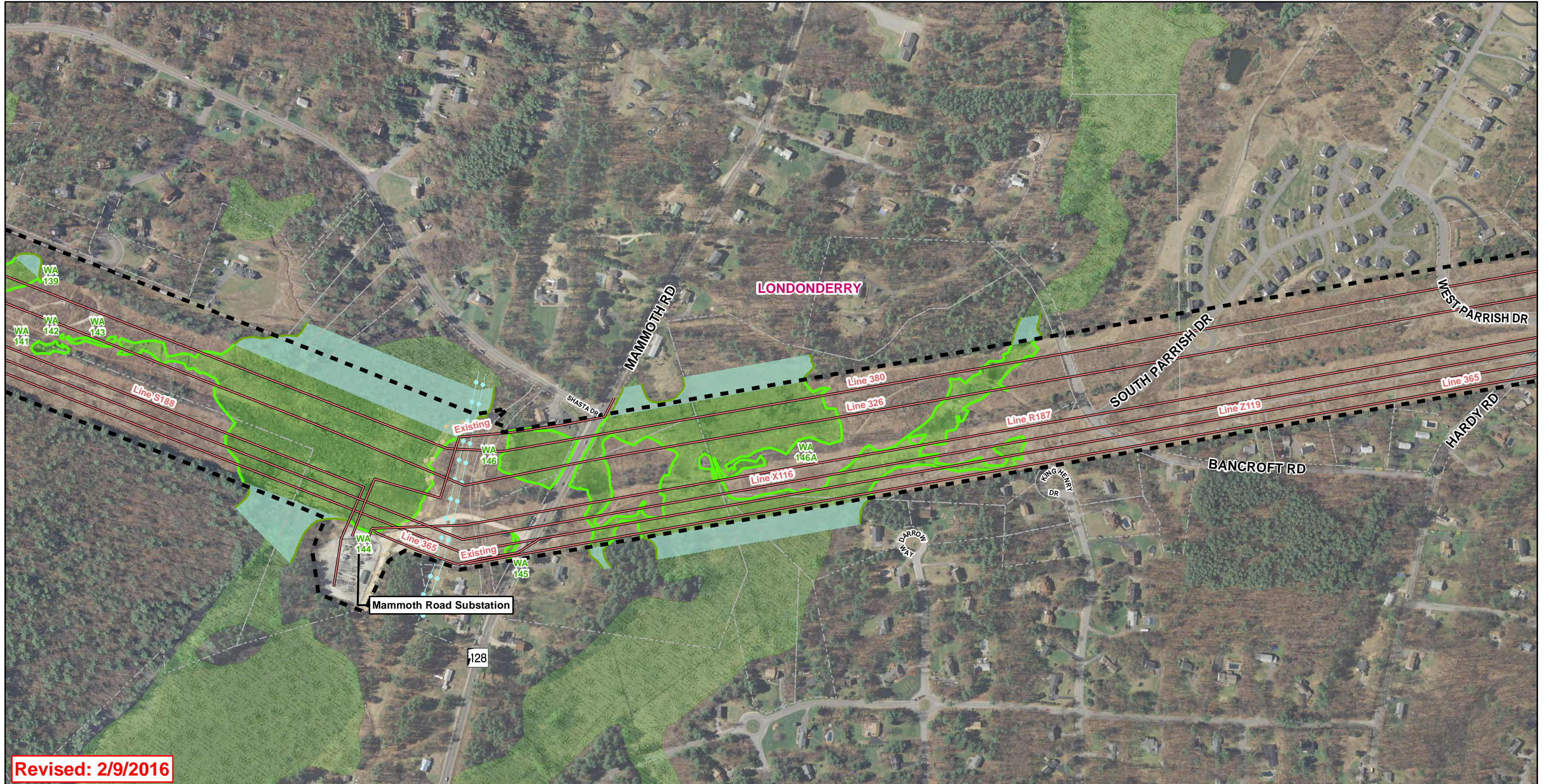
Existing Transmission Line	Delineated Perennial Stream	Vernal Pool	Surveyed ROW Boundary
Wetland Edge	Delineated Intermittent Stream	NHDES Prime Wetland	Parcel Boundary
Estimated Wetland Edge	Delineated Ordinary High Water	Gas Pipeline ROW	Town Boundaries
Estimated Wetland Edge (within 100ft of ROW)	Estimated Intermittent Stream	Abandoned Oil Pipeline ROW	
Wetland Resource Area	Estimated Perennial Stream	Gas Pipeline ROW	
Open Water	Estimated Wetland	Sewer Line ROW	
NWI Wetland	Estimated Open Water		
USGS Stream			



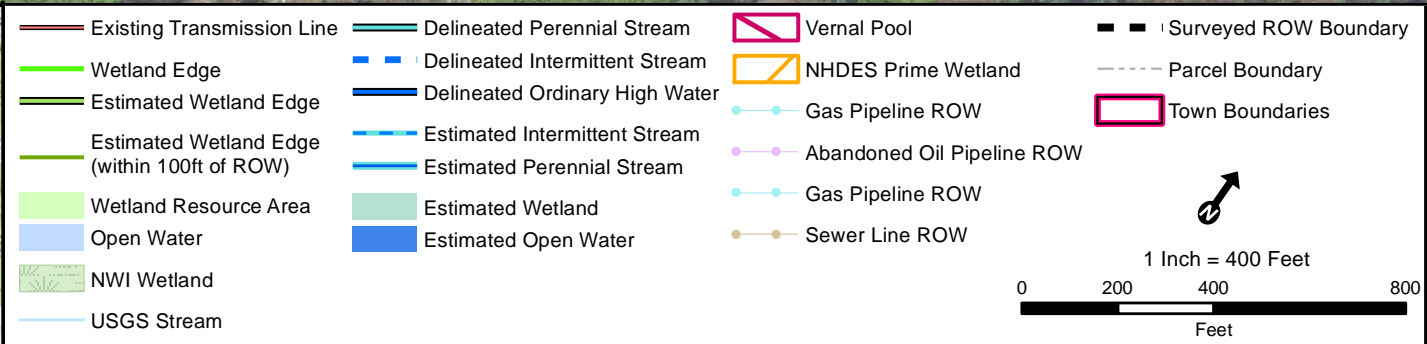
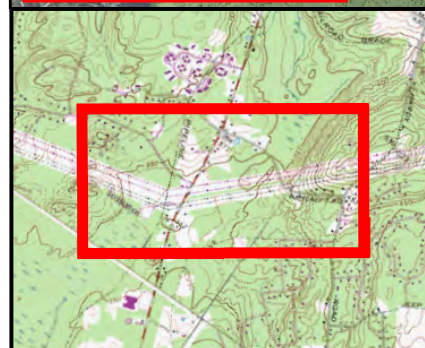
Existing Conditions  
Merrimack Valley Reliability Project  
Tewksbury 22A Substation MA to  
Scobie Pond 345 kV Substation NH

Source:  
NGRID, Black & Veatch, VHB  
Beals & Thomas, Eversource, Normandeau





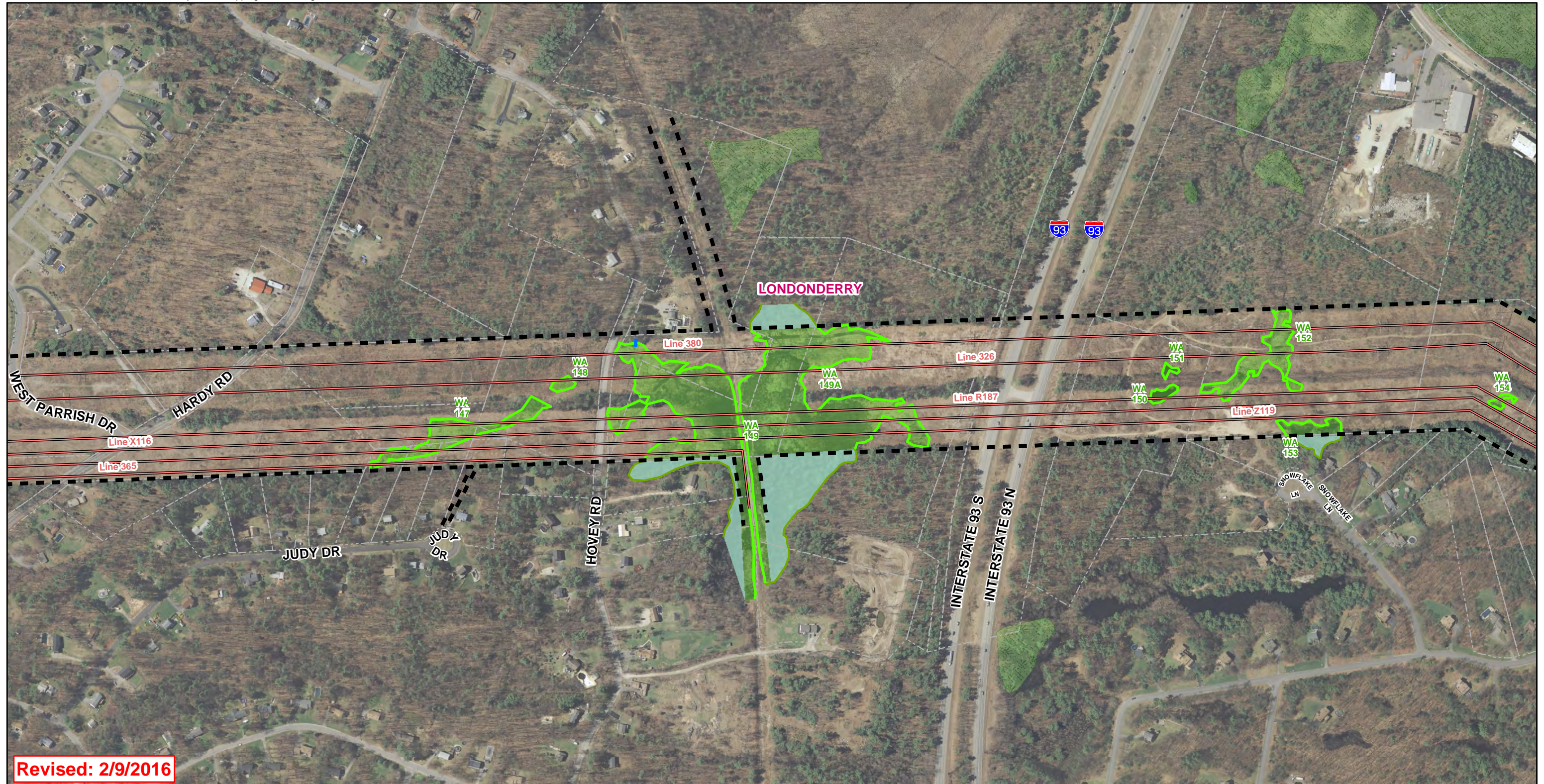
Revised: 2/9/2016



Existing Conditions  
 Merrimack Valley Reliability Project  
 Tewksbury 22A Substation MA to  
 Scobie Pond 345 kV Substation NH

Source:  
 NGRID, Black & Veatch, VHB  
 Beals & Thomas, Eversource, Normandeau

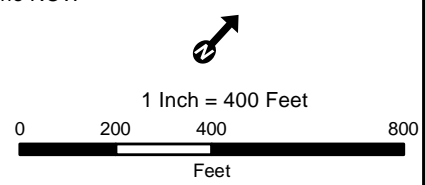




Revised: 2/9/2016



Existing Transmission Line	Delineated Perennial Stream	Vernal Pool	Surveyed ROW Boundary
Wetland Edge	Delineated Intermittent Stream	NHDES Prime Wetland	Parcel Boundary
Estimated Wetland Edge	Delineated Ordinary High Water	Gas Pipeline ROW	Town Boundaries
Estimated Wetland Edge (within 100ft of ROW)	Estimated Intermittent Stream	Abandoned Oil Pipeline ROW	
Wetland Resource Area	Estimated Perennial Stream	Gas Pipeline ROW	
Open Water	Estimated Wetland	Sewer Line ROW	
NWI Wetland	Estimated Open Water		
USGS Stream			



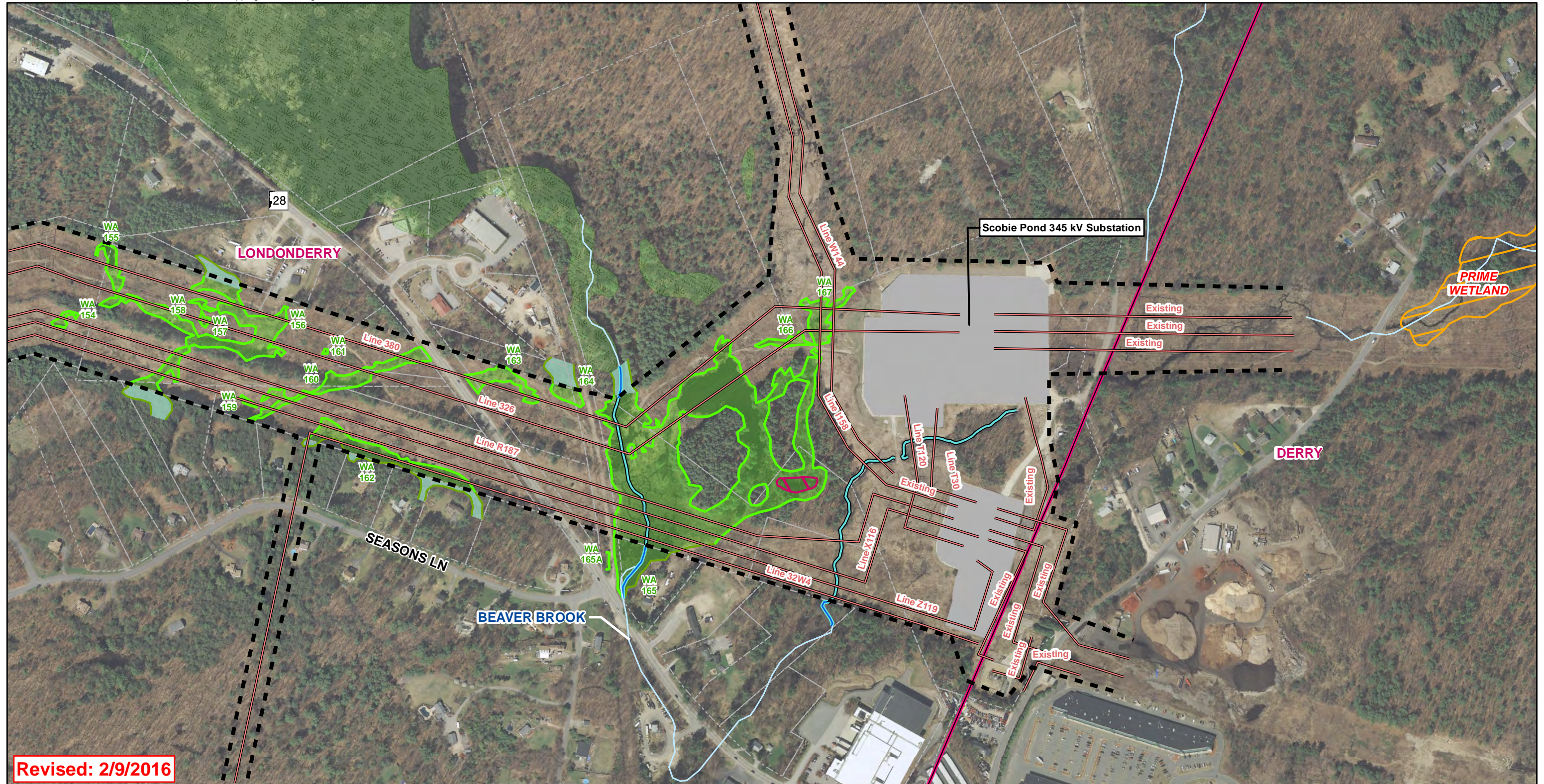
Existing Conditions  
Merrimack Valley Reliability Project  
Tewksbury 22A Substation MA to  
Scobie Pond 345 kV Substation NH

Source:  
NGRID, Black & Veatch, VHB  
Beals & Thomas, Eversource, Normandeau

Date: 7/13/2015







Revised: 2/9/2016



— Existing Transmission Line	— Delineated Perennial Stream	— Vernal Pool	— Surveyed ROW Boundary
— Wetland Edge	— Delineated Intermittent Stream	— NHDES Prime Wetland	— Parcel Boundary
— Estimated Wetland Edge	— Delineated Ordinary High Water	— Gas Pipeline ROW	— Town Boundaries
— Estimated Wetland Edge (within 100ft of ROW)	— Estimated Intermittent Stream	— Abandoned Oil Pipeline ROW	
— Wetland Resource Area	— Estimated Perennial Stream	— Gas Pipeline ROW	
— Open Water	— Estimated Wetland	— Sewer Line ROW	
— NWI Wetland	— Estimated Open Water		
— USGS Stream			

1 Inch = 400 Feet

0 200 400 800 Feet

Existing Conditions  
 Merrimack Valley Reliability Project  
 Tewksbury 22A Substation MA to  
 Scobie Pond 345 kV Substation NH

Source:  
 NGRID, Black & Veatch, VHB  
 Beals & Thomas, Eversource, Normandeau

