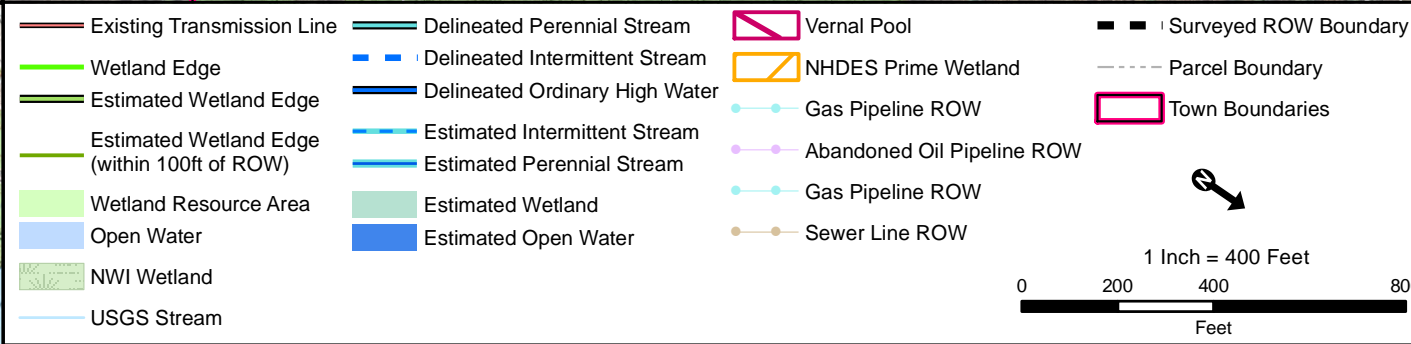




Revised: 5/19/2016

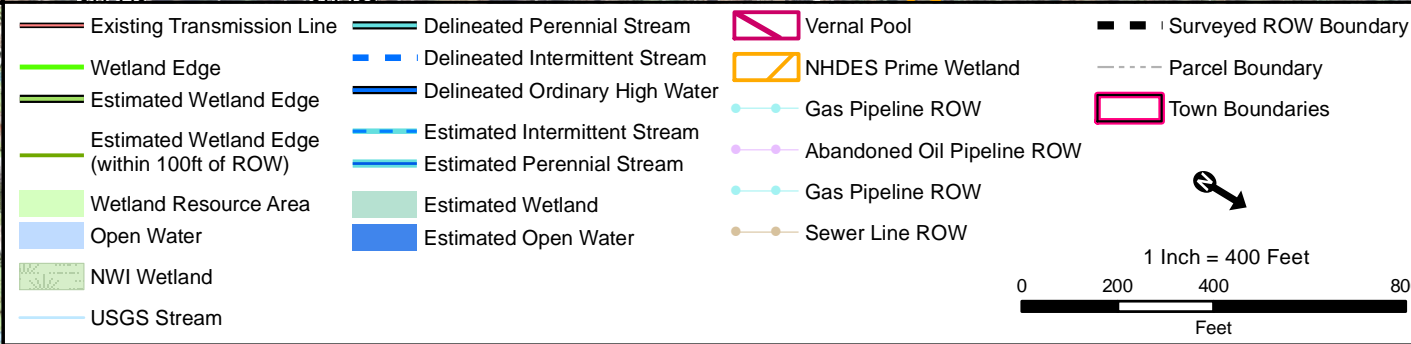


Existing Conditions
Merrimack Valley Reliability Project
Tewksbury 22A Substation MA to
Scobie Pond 345 kV Substation NH





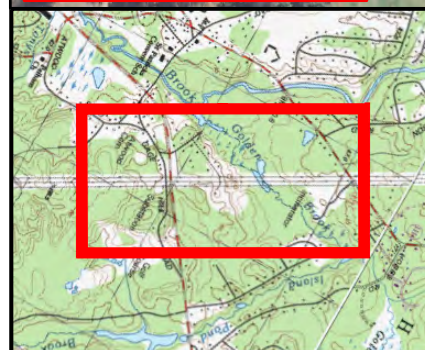
Revised: 5/19/2016



Existing Conditions
Merrimack Valley Reliability Project
Tewksbury 22A Substation MA to
Scobie Pond 345 kV Substation NH



Revised: 5/19/2016



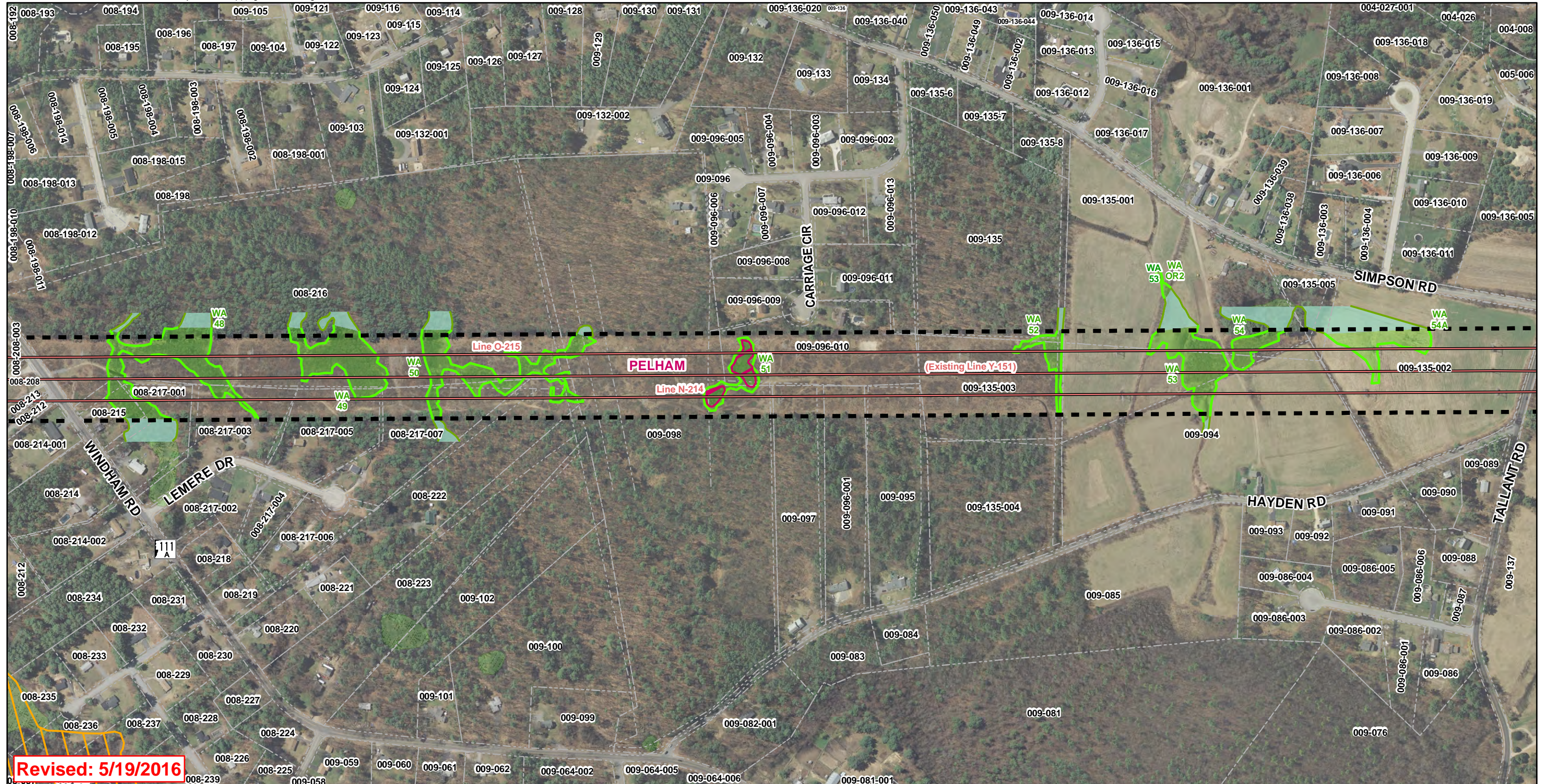
— Existing Transmission Line	— Delineated Perennial Stream	□ Vernal Pool	— Surveyed ROW Boundary
— Wetland Edge	— Delineated Intermittent Stream	▨ NHDES Prime Wetland	--- Parcel Boundary
— Estimated Wetland Edge	— Delineated Ordinary High Water	— Gas Pipeline ROW	□ Town Boundaries
— Estimated Wetland Edge (within 100ft of ROW)	— Estimated Intermittent Stream	— Abandoned Oil Pipeline ROW	
— Wetland Resource Area	— Estimated Perennial Stream	— Gas Pipeline ROW	
— Open Water	— Estimated Wetland	— Sewer Line ROW	
— NWI Wetland	— Estimated Open Water		
— USGS Stream			

1 Inch = 400 Feet

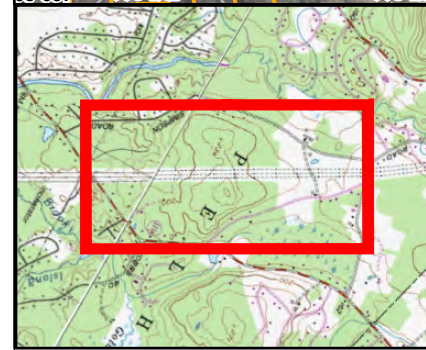
0 200 400 800 Feet

Existing Conditions
Merrimack Valley Reliability Project
Tewksbury 22A Substation MA to
Scobie Pond 345 kV Substation NH





Revised: 5/19/2016



— Existing Transmission Line	— Delineated Perennial Stream	▭ Vernal Pool	— Surveyed ROW Boundary
— Wetland Edge	— Delineated Intermittent Stream	▭ NHDES Prime Wetland	— Parcel Boundary
— Estimated Wetland Edge	— Delineated Ordinary High Water	— Gas Pipeline ROW	▭ Town Boundaries
— Estimated Wetland Edge (within 100ft of ROW)	— Estimated Intermittent Stream	— Abandoned Oil Pipeline ROW	
— Wetland Resource Area	— Estimated Perennial Stream	— Gas Pipeline ROW	
— Open Water	— Estimated Wetland	— Sewer Line ROW	
— NWI Wetland	— Estimated Open Water		
— USGS Stream			

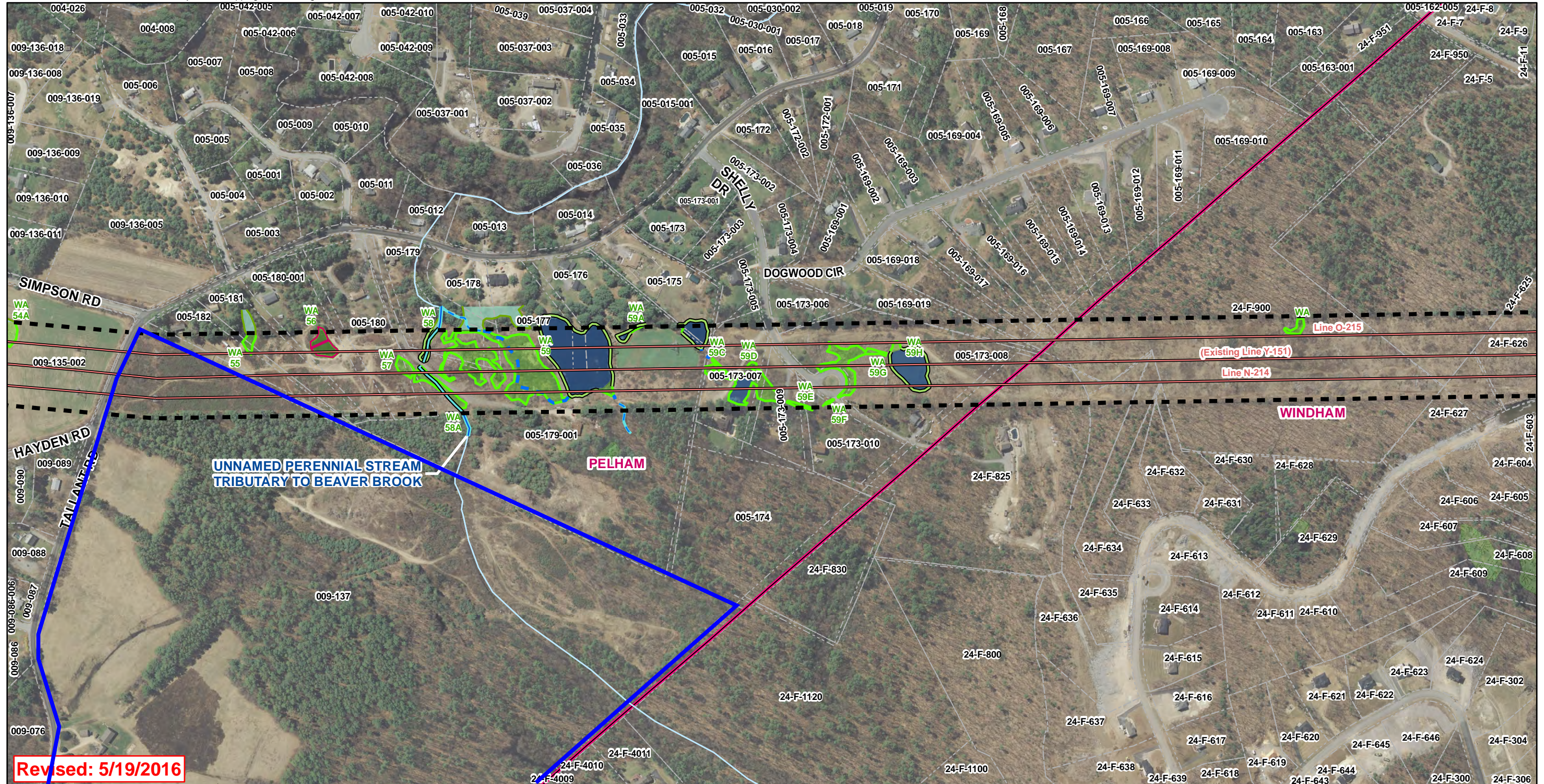
1 Inch = 400 Feet

0 200 400 800 Feet

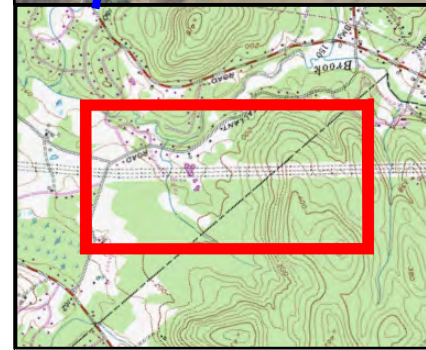
Existing Conditions
Merrimack Valley Reliability Project
Tewksbury 22A Substation MA to
Scobie Pond 345 kV Substation NH

Source:
 NGRID, Black & Veatch, VHB
 Beals & Thomas, Eversource, Normandeau





Revised: 5/19/2016



— Existing Transmission Line	— Delineated Perennial Stream	▭ Vernal Pool	— Surveyed ROW Boundary
— Wetland Edge	— Delineated Intermittent Stream	▭ NHDES Prime Wetland	— Parcel Boundary
— Estimated Wetland Edge	— Delineated Ordinary High Water	— Gas Pipeline ROW	▭ Town Boundaries
— Estimated Wetland Edge (within 100ft of ROW)	— Estimated Intermittent Stream	— Abandoned Oil Pipeline ROW	
— Wetland Resource Area	— Estimated Perennial Stream	— Gas Pipeline ROW	
— Open Water	— Estimated Wetland	— Sewer Line ROW	
— NWI Wetland	— Estimated Open Water		
— USGS Stream			

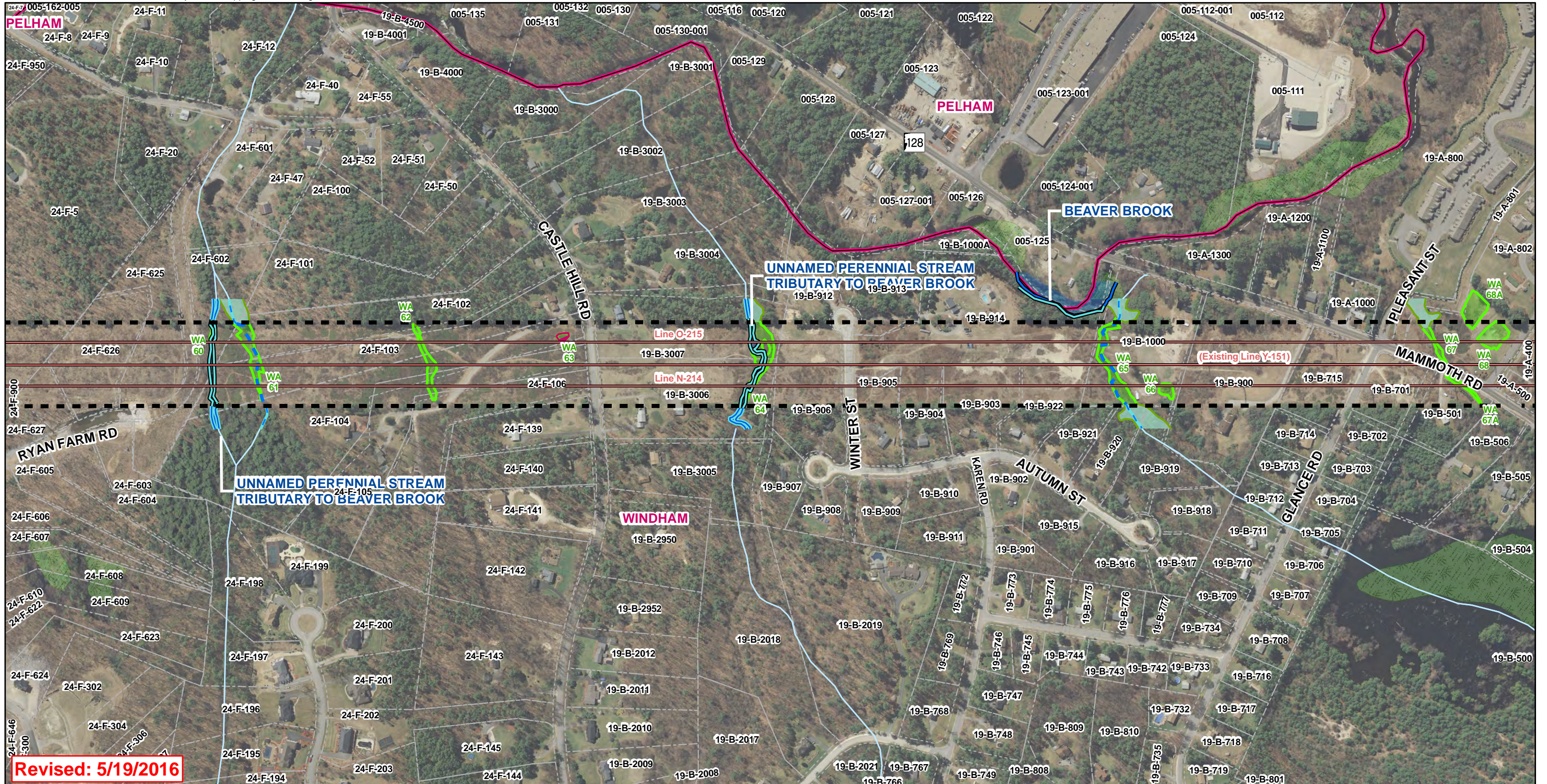
1 Inch = 400 Feet

0 200 400 800 Feet

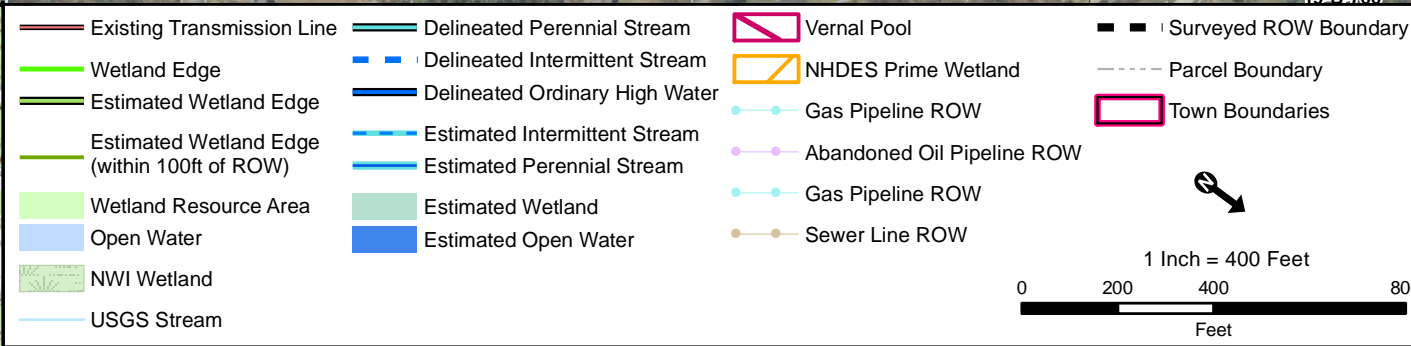
Existing Conditions
Merrimack Valley Reliability Project
Tewksbury 22A Substation MA to
Scobie Pond 345 kV Substation NH

Source:
 NGRID, Black & Veatch, VHB
 Beals & Thomas, Eversource, Normandeau





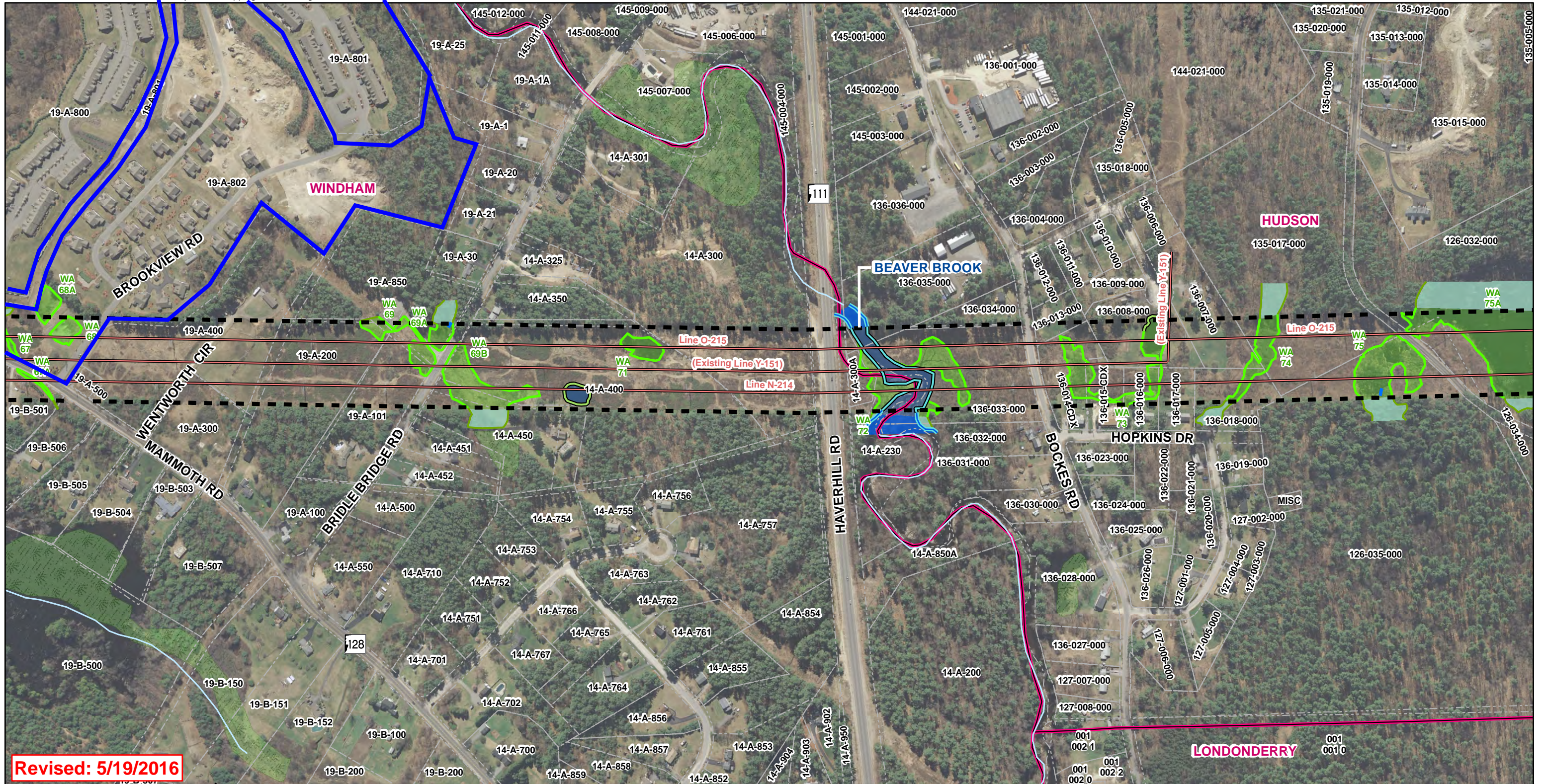
Revised: 5/19/2016



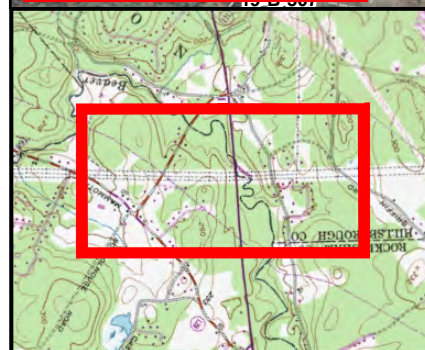
Existing Conditions
 Merrimack Valley Reliability Project
 Tewksbury 22A Substation MA to
 Scobie Pond 345 kV Substation NH

Source:
 NGRID, Black & Veatch, VHB
 Beals & Thomas, Eversource, Normandeau



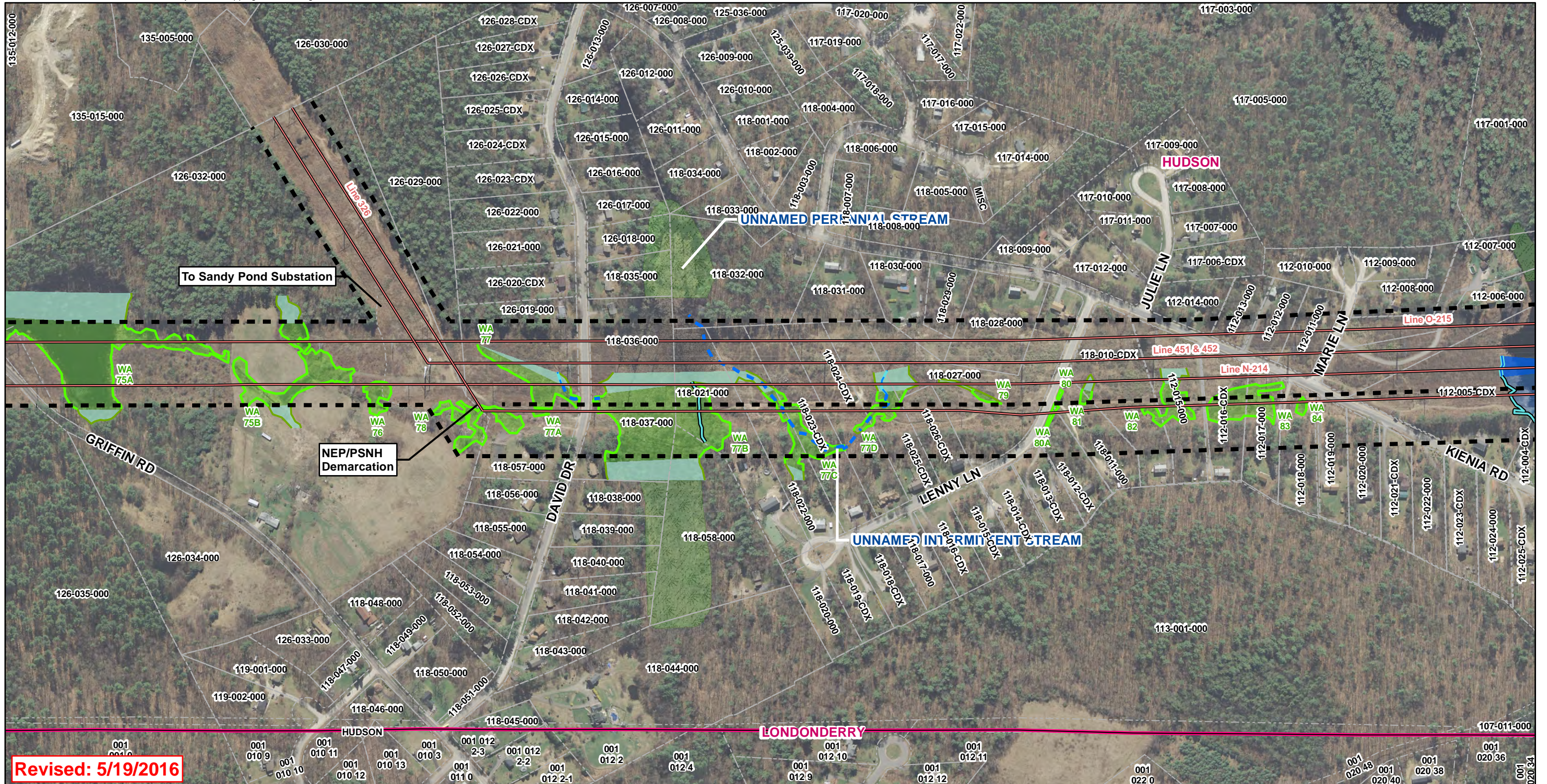


Revised: 5/19/2016



- | | | | |
|--|----------------------------------|------------------------------|-------------------------|
| — Existing Transmission Line | — Delineated Perennial Stream | — Vernal Pool | — Surveyed ROW Boundary |
| — Wetland Edge | — Delineated Intermittent Stream | — NHDES Prime Wetland | — Parcel Boundary |
| — Estimated Wetland Edge | — Delineated Ordinary High Water | — Gas Pipeline ROW | — Town Boundaries |
| — Estimated Wetland Edge (within 100ft of ROW) | — Estimated Intermittent Stream | — Abandoned Oil Pipeline ROW | |
| — Wetland Resource Area | — Estimated Perennial Stream | — Gas Pipeline ROW | |
| — Open Water | — Estimated Wetland | — Sewer Line ROW | |
| — NWI Wetland | — Estimated Open Water | | |
| — USGS Stream | | | |

Existing Conditions
Merrimack Valley Reliability Project
Tewksbury 22A Substation MA to
Scobie Pond 345 kV Substation NH



Revised: 5/19/2016



— Existing Transmission Line	— Delineated Perennial Stream	▭ Vernal Pool	— Surveyed ROW Boundary
— Wetland Edge	— Delineated Intermittent Stream	▭ NHDES Prime Wetland	— Parcel Boundary
— Estimated Wetland Edge	— Delineated Ordinary High Water	— Gas Pipeline ROW	▭ Town Boundaries
— Estimated Wetland Edge (within 100ft of ROW)	— Estimated Intermittent Stream	— Abandoned Oil Pipeline ROW	
— Wetland Resource Area	— Estimated Perennial Stream	— Gas Pipeline ROW	
— Open Water	— Estimated Wetland	— Sewer Line ROW	
— NWI Wetland	— Estimated Open Water		
— USGS Stream			

1 Inch = 400 Feet

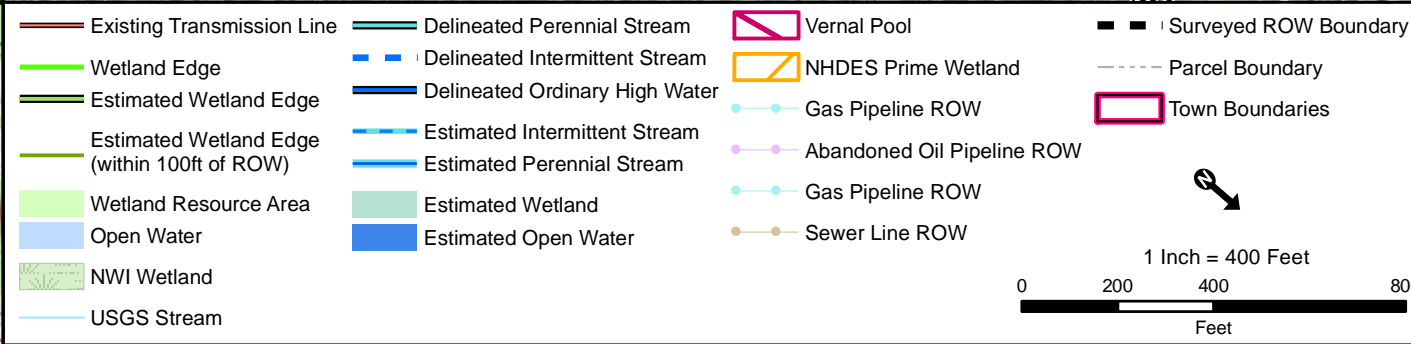
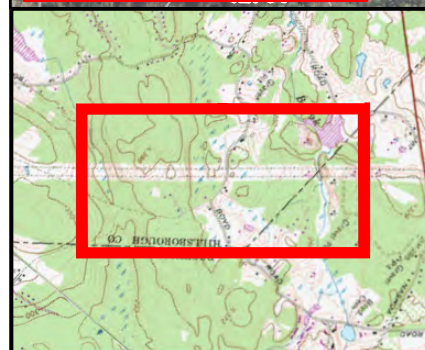
0 200 400 800 Feet

Existing Conditions
Merrimack Valley Reliability Project
Tewksbury 22A Substation MA to
Scobie Pond 345 kV Substation NH



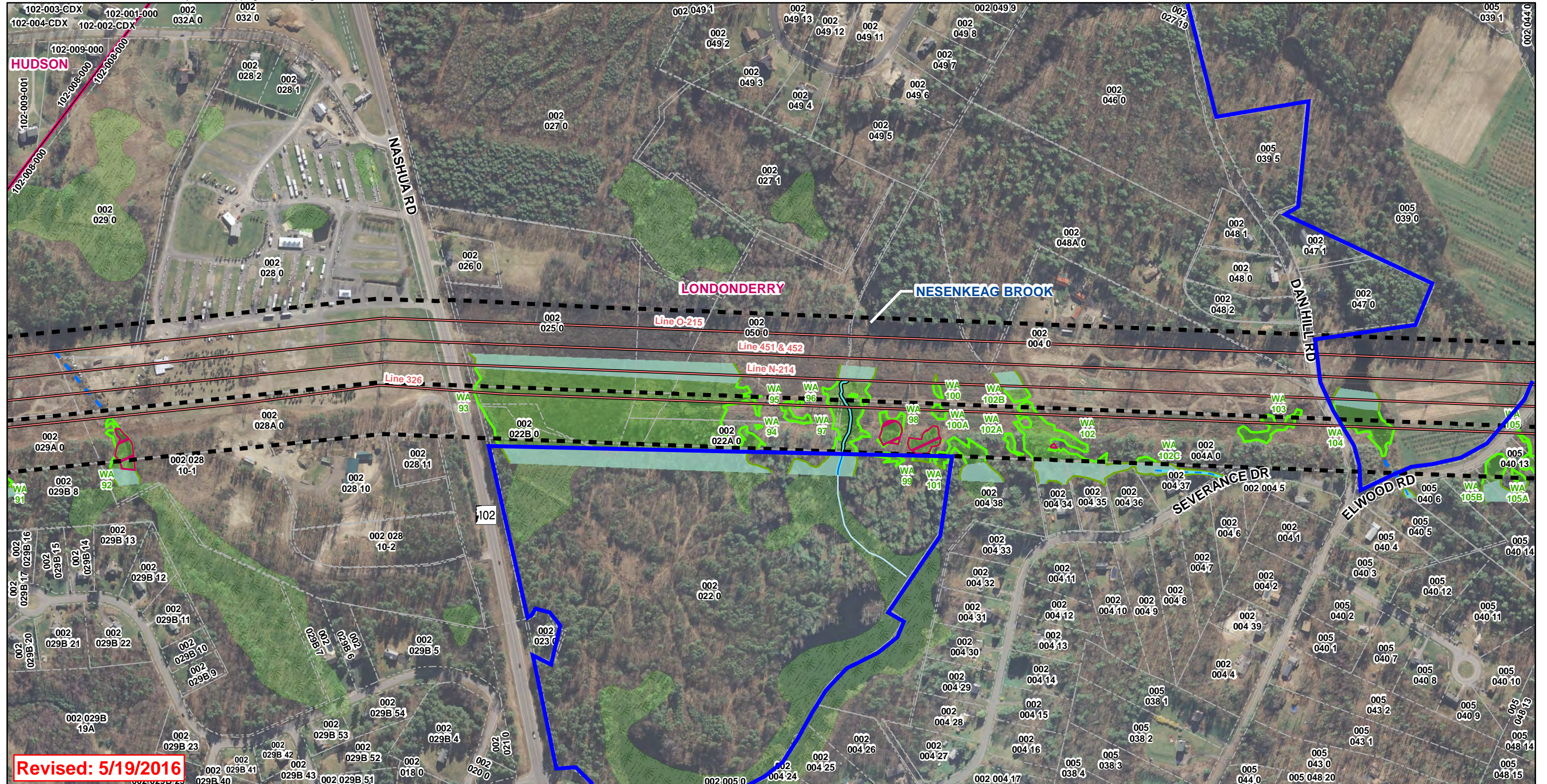


Revised: 5/19/2016

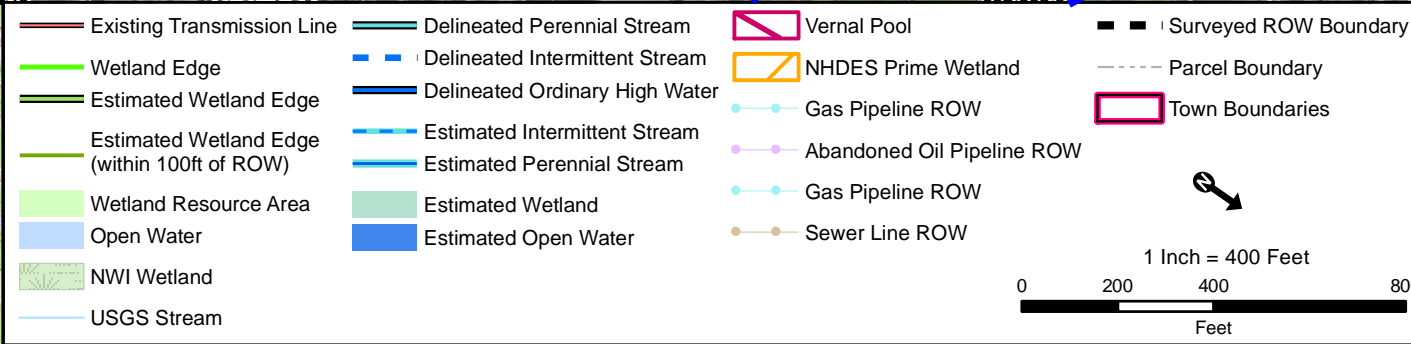
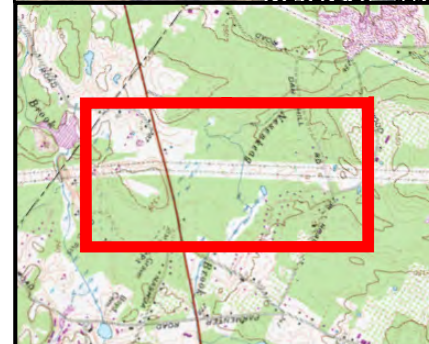


Existing Conditions
Merrimack Valley Reliability Project
Tewksbury 22A Substation MA to
Scobie Pond 345 kV Substation NH





Revised: 5/19/2016

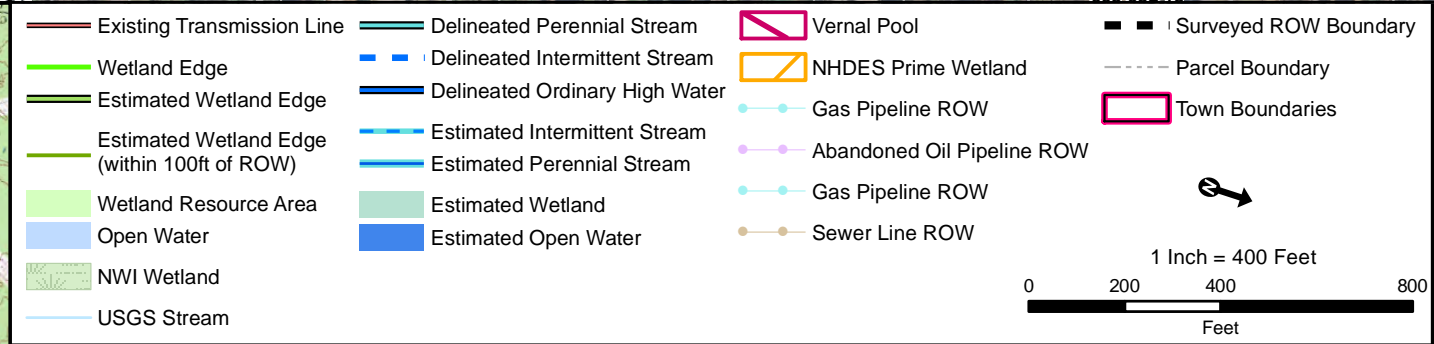


Existing Conditions
Merrimack Valley Reliability Project
Tewksbury 22A Substation MA to
Scobie Pond 345 kV Substation NH





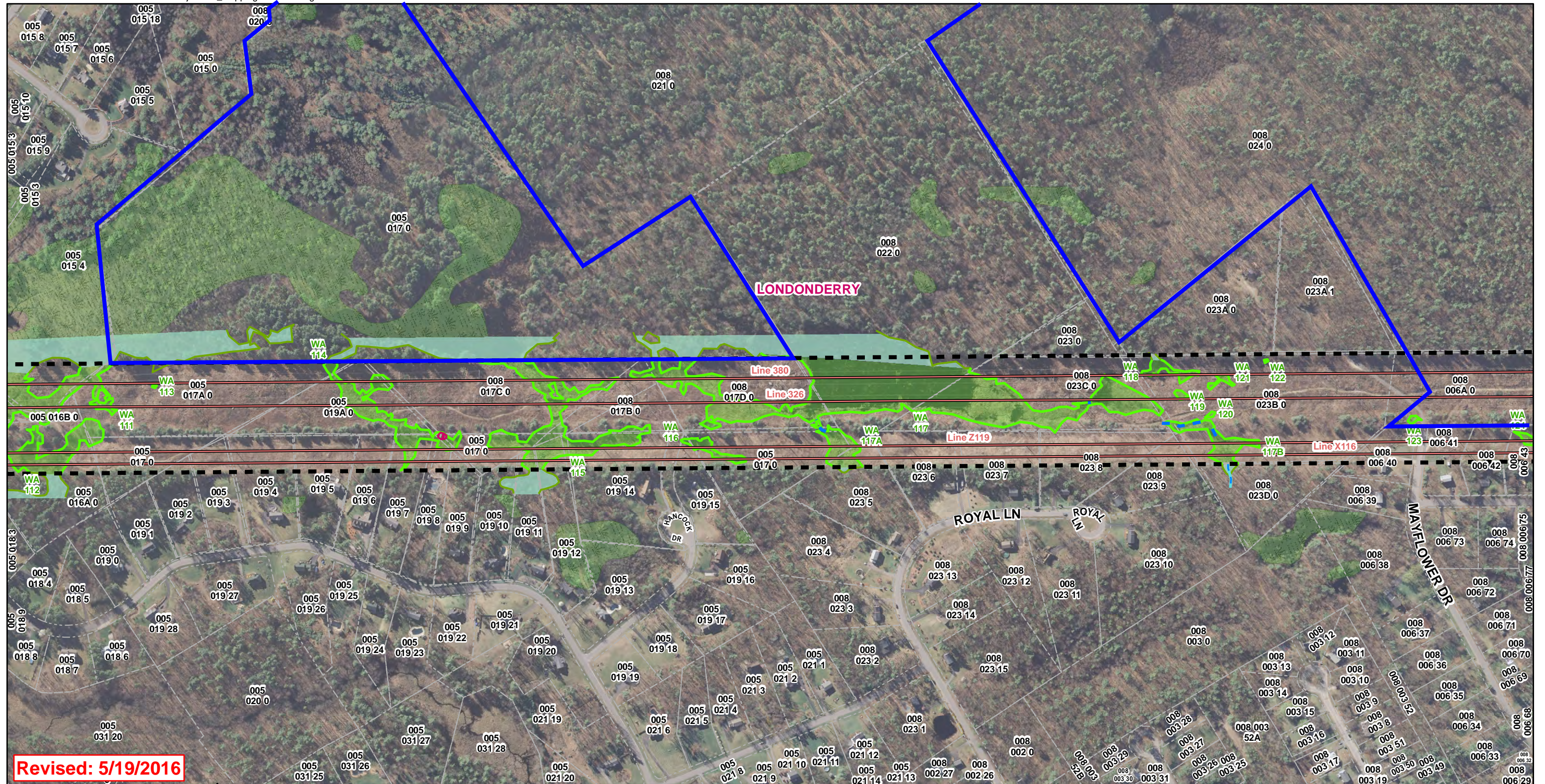
Revised: 5/19/2016



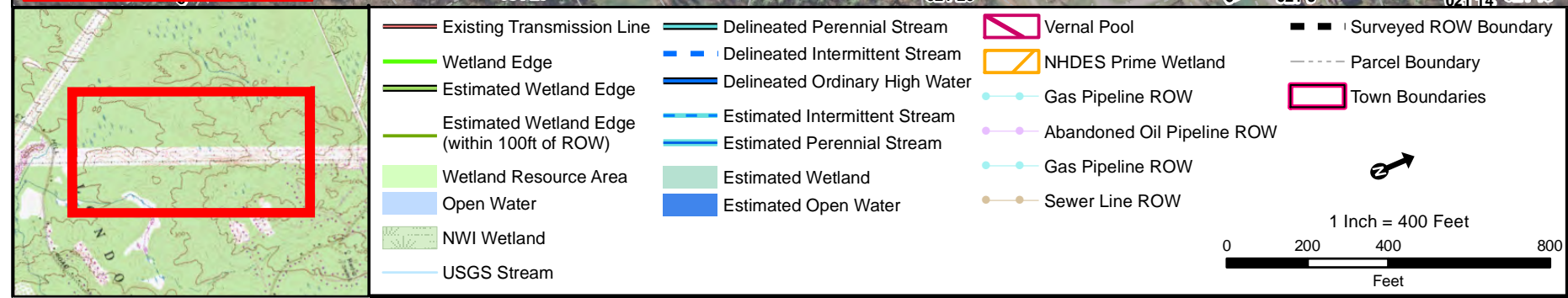
Existing Conditions
 Merrimack Valley Reliability Project
 Tewksbury 22A Substation MA to
 Scobie Pond 345 kV Substation NH

Source:
 NGRID, Black & Veatch, VHB
 Beals & Thomas, Eversource, Normandeau





Revised: 5/19/2016



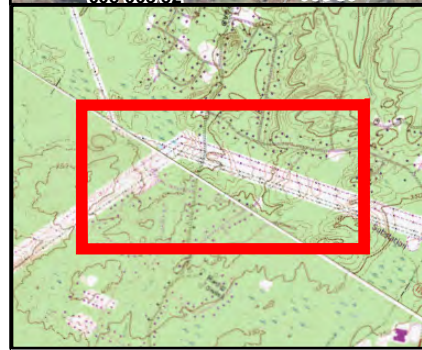
Existing Conditions
Merrimack Valley Reliability Project
Tewksbury 22A Substation MA to
Scobie Pond 345 kV Substation NH

Source:
NGRID, Black & Veatch, VHB
Beals & Thomas, Eversource, Normandeau





Revised: 5/19/2016



— Existing Transmission Line	— Delineated Perennial Stream	▭ Vernal Pool	— Surveyed ROW Boundary
— Wetland Edge	— Delineated Intermittent Stream	▭ NHDES Prime Wetland	— Parcel Boundary
— Estimated Wetland Edge	— Delineated Ordinary High Water	— Gas Pipeline ROW	▭ Town Boundaries
— Estimated Wetland Edge (within 100ft of ROW)	— Estimated Intermittent Stream	— Abandoned Oil Pipeline ROW	
— Wetland Resource Area	— Estimated Perennial Stream	— Gas Pipeline ROW	
— Open Water	— Estimated Wetland	— Sewer Line ROW	
— NWI Wetland	— Estimated Open Water		
— USGS Stream			

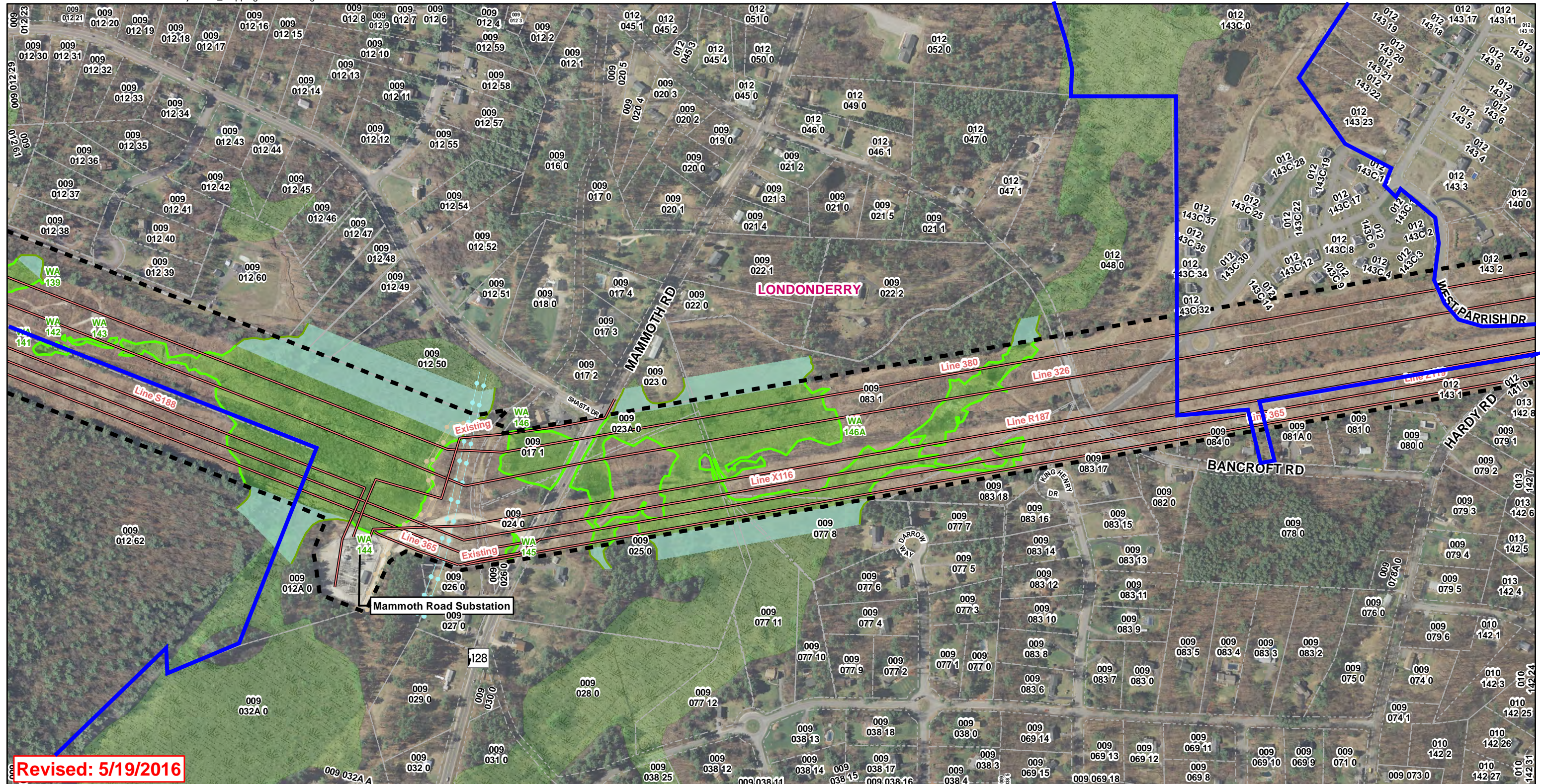
1 Inch = 400 Feet

0 200 400 800 Feet

Existing Conditions
 Merrimack Valley Reliability Project
 Tewksbury 22A Substation MA to
 Scobie Pond 345 kV Substation NH

Source:
 NGRID, Black & Veatch, VHB
 Beals & Thomas, Eversource, Normandeau





Revised: 5/19/2016



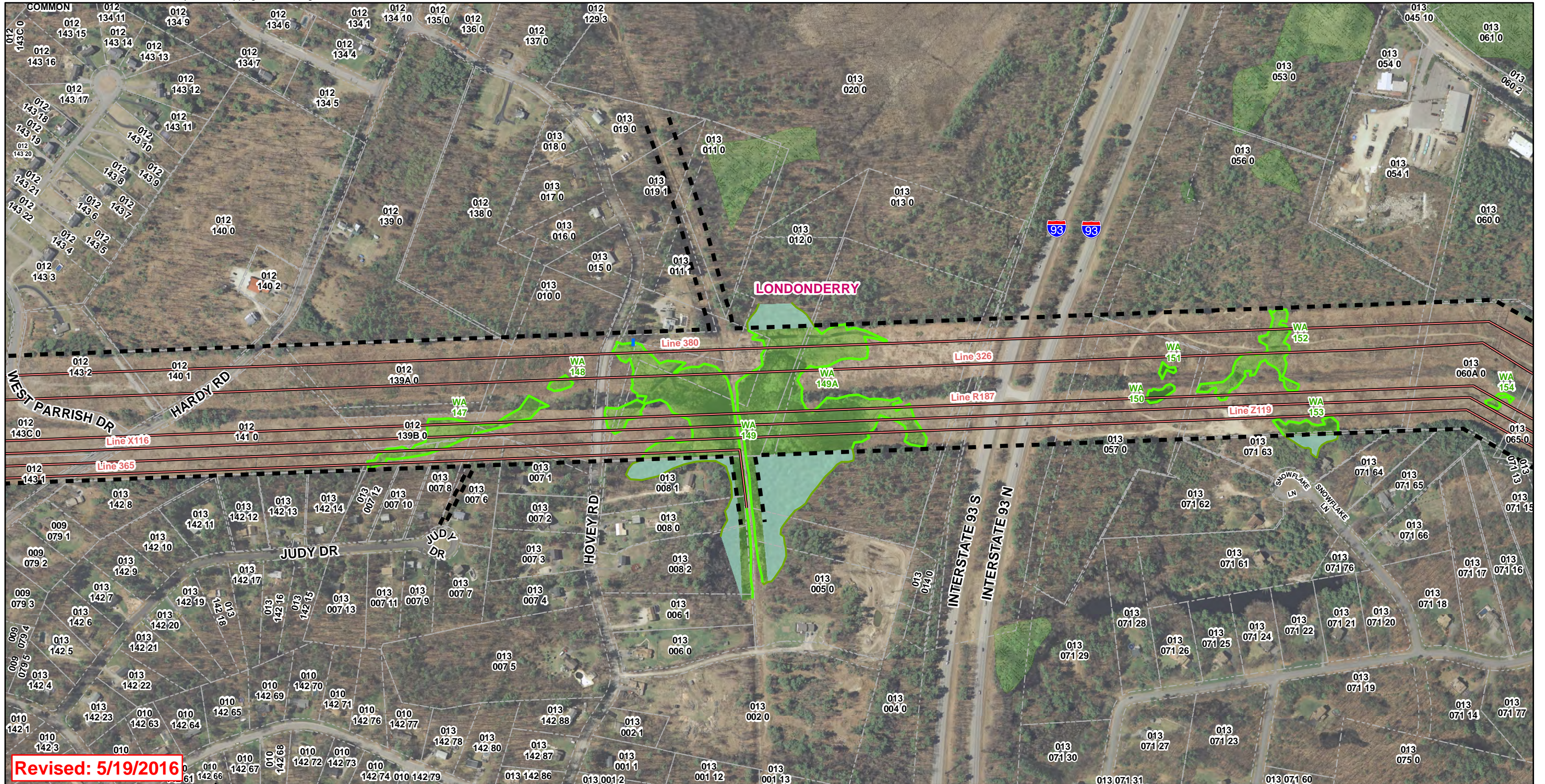
— Existing Transmission Line	— Delineated Perennial Stream	▭ Vernal Pool	— Surveyed ROW Boundary
— Wetland Edge	— Delineated Intermittent Stream	▭ NHDES Prime Wetland	— Parcel Boundary
— Estimated Wetland Edge	— Delineated Ordinary High Water	— Gas Pipeline ROW	▭ Town Boundaries
— Estimated Wetland Edge (within 100ft of ROW)	— Estimated Intermittent Stream	— Abandoned Oil Pipeline ROW	
— Wetland Resource Area	— Estimated Perennial Stream	— Gas Pipeline ROW	
— Open Water	— Estimated Wetland	— Sewer Line ROW	
— NWI Wetland	— Estimated Open Water		
— USGS Stream			

1 Inch = 400 Feet

0 200 400 800 Feet

Existing Conditions
Merrimack Valley Reliability Project
Tewksbury 22A Substation MA to
Scobie Pond 345 kV Substation NH





Revised: 5/19/2016



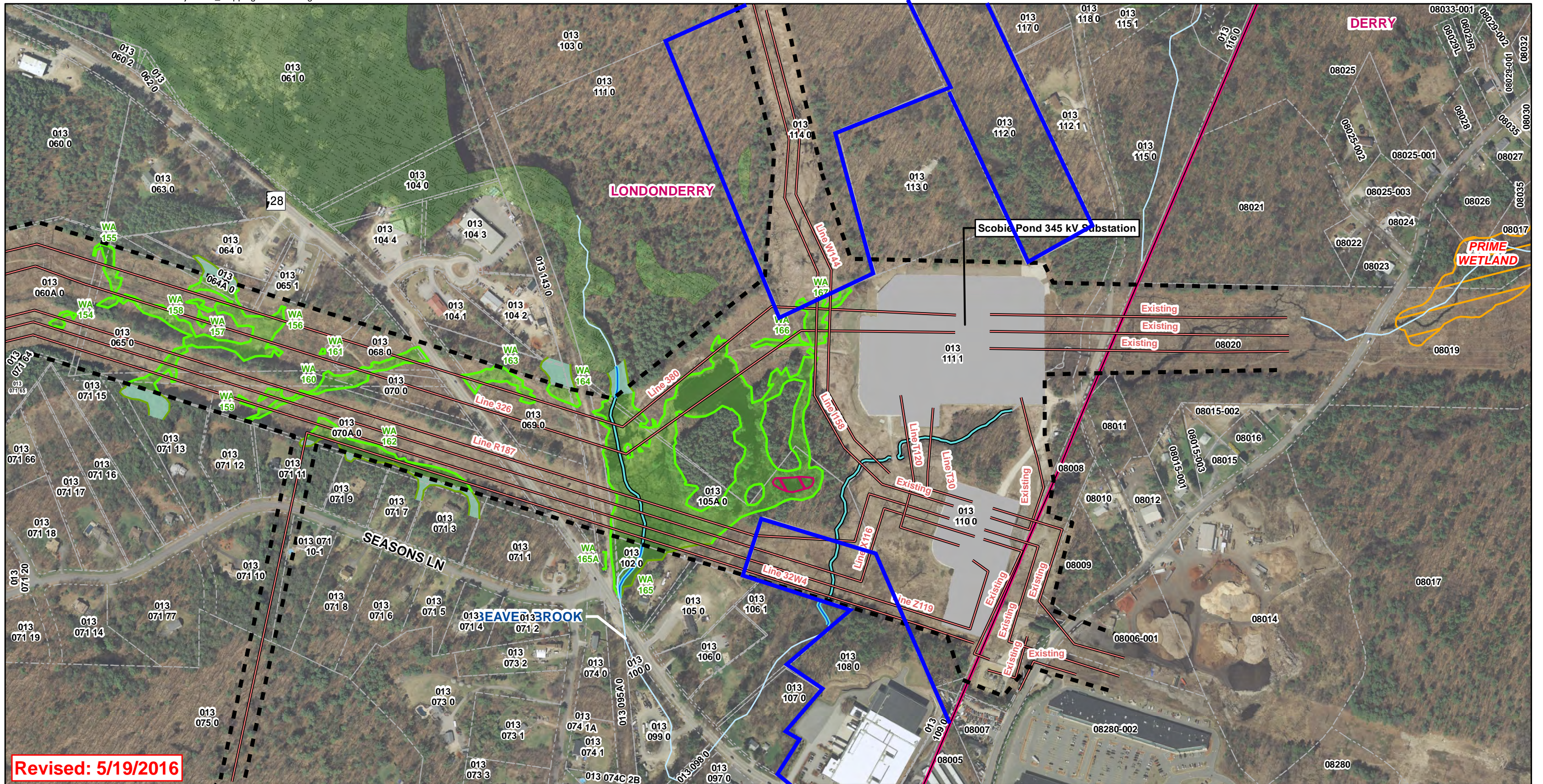
Existing Transmission Line	Delineated Perennial Stream	Vernal Pool	Surveyed ROW Boundary
Wetland Edge	Delineated Intermittent Stream	NHDES Prime Wetland	Parcel Boundary
Estimated Wetland Edge	Delineated Ordinary High Water	Abandoned Oil Pipeline ROW	Town Boundaries
Estimated Wetland Edge (within 100ft of ROW)	Estimated Intermittent Stream	Gas Pipeline ROW	
Wetland Resource Area	Estimated Perennial Stream	Gas Pipeline ROW	
Open Water	Estimated Wetland	Sewer Line ROW	
NWI Wetland	Estimated Open Water		
USGS Stream			

1 Inch = 400 Feet

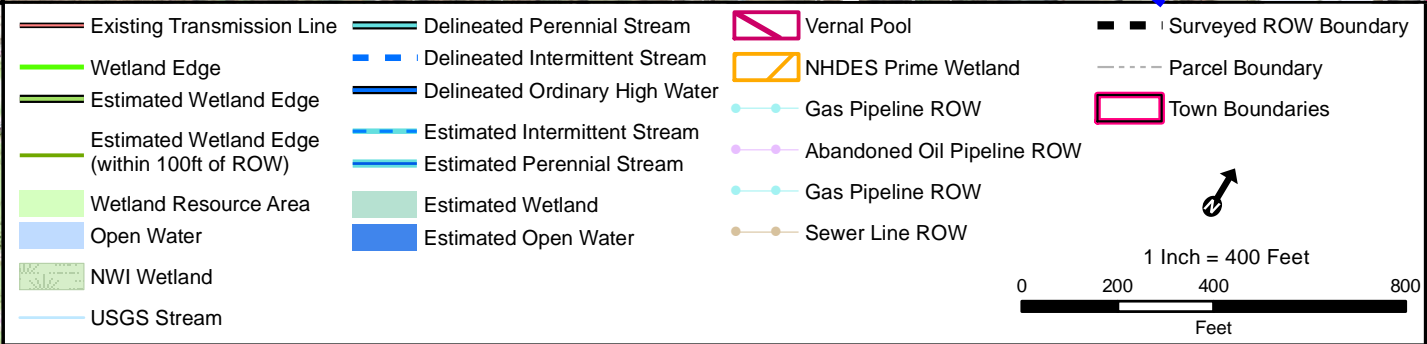
0 200 400 800 Feet

Existing Conditions
Merrimack Valley Reliability Project
Tewksbury 22A Substation MA to
Scobie Pond 345 kV Substation NH

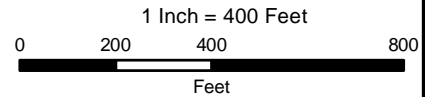




Revised: 5/19/2016



Existing Conditions
Merrimack Valley Reliability Project
Tewksbury 22A Substation MA to
Scobie Pond 345 kV Substation NH



Source:
NGRID, Black & Veatch, VHB
Beals & Thomas, Eversource, Normandeau

Date: 7/13/2015

