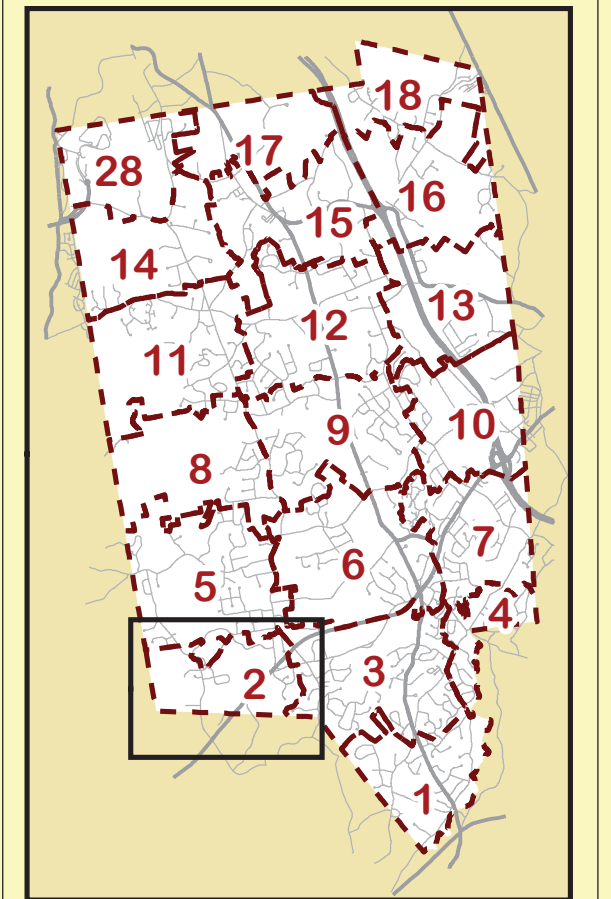


Town of Londonderry
New Hampshire



Parcel Atlas
April, 2014

- Parcel Dimension
 - Parcel ID
 - Parcel Address
 - Parcel Frontage
 - Tax Map Divisions
- 18-9
 - 250
 - (256)
- Paved Roads
 - Unpaved Roads
 - Buildings
 - Outbuildings or other structures
 - Utility Easements
 - Power Transmission Lines
 - Natural Gas Lines
 - Ponds
 - Named Streams
 - Wetlands
 - Un-named Streams
 - Towers
- Zoning Districts**
- Agricultural-Residential (AR-I)
 - Multi-Family Residential (R-III)
 - Commercial I (C-I)
 - Commercial II (C-II)
 - Commercial III (C-III)
 - Commercial IV (C-IV)
 - Mixed Use Commercial (MUC)
 - Gateway Business (GB)
 - Industrial I (IND-I)
 - Industrial II (IND-II)
 - Rte 28 Performance Overlay District
 - Rte 102 Performance Overlay District
 - Airport Overlay District (AD)
 - Historic Overlay District
 - Woodmont Commons PUD (PUD-1)
 - MHT Noise Contours

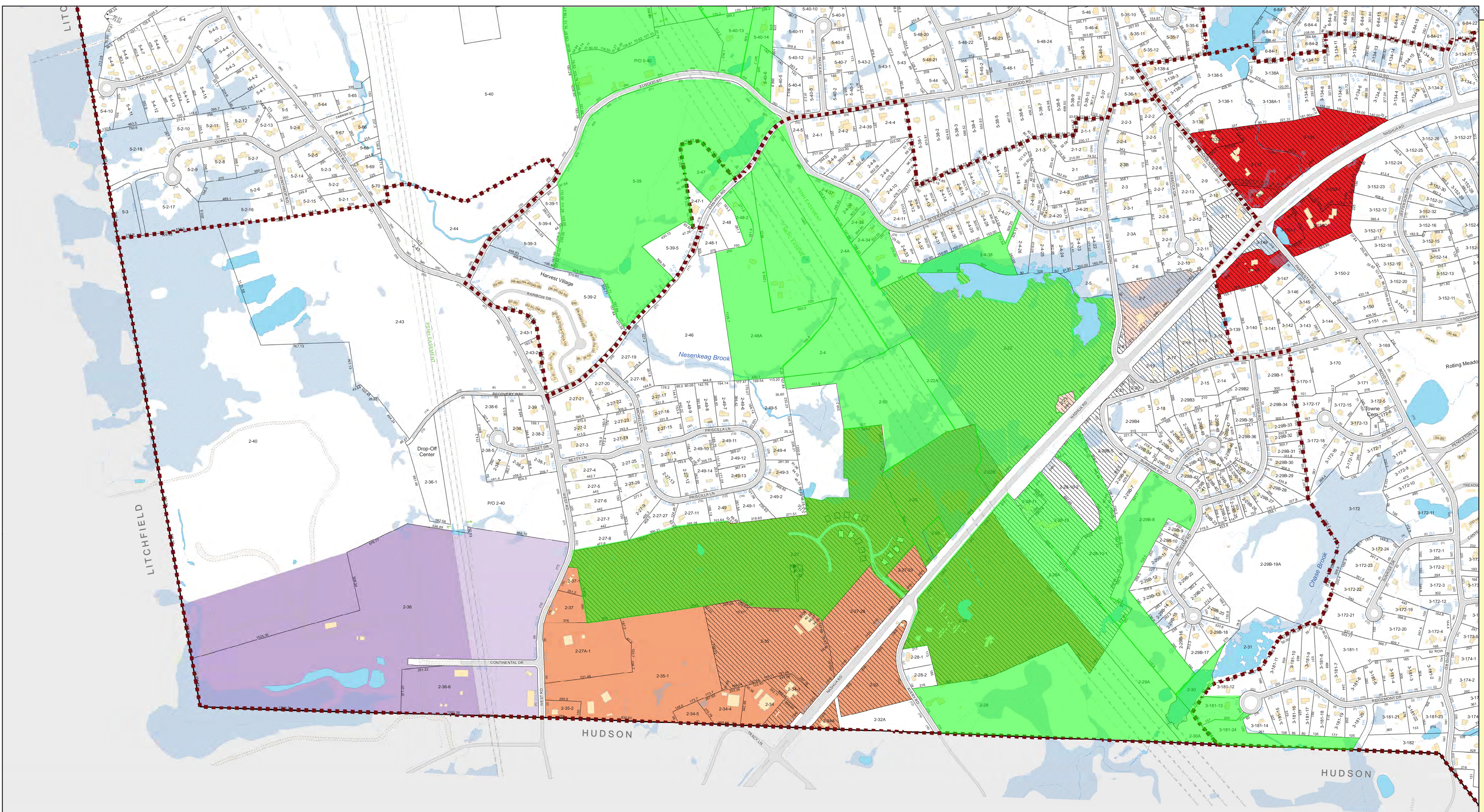


400 0 400 Feet
1 inch = 400 feet

Tax Map
002

Source:
Parcel lines are current as of April 1, 2014 and were mapped using aerial photo interpretation, AutoCAD engineering files or recorded deeds as reference. Base features were mapped by Infotech, LLC from aerial photography captured in Spring, 2010. Regular updates to both parcels and landbase features are performed as new development or lot adjustments are approved.

These maps have been prepared for assessment purposes only and are not intended for legal description or conveyance.

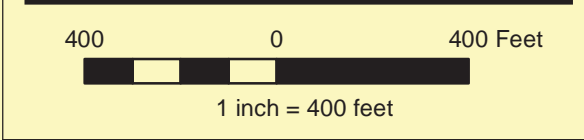
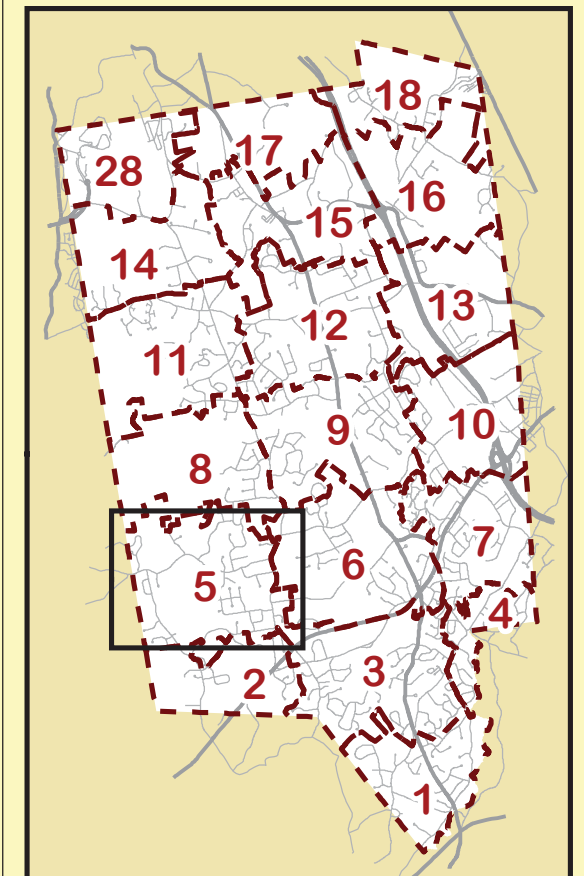




- Parcel Dimension
- Parcel ID
- Parcel Address
- Parcel Frontage
- Tax Map Divisions
- Paved Roads
- Unpaved Roads
- Buildings
- Outbuildings or other structures
- Utility Easements
- Power Transmission Lines
- Natural Gas Lines
- Ponds
- Named Streams
- Wetlands
- Un-named Streams
- Towers

Zoning Districts

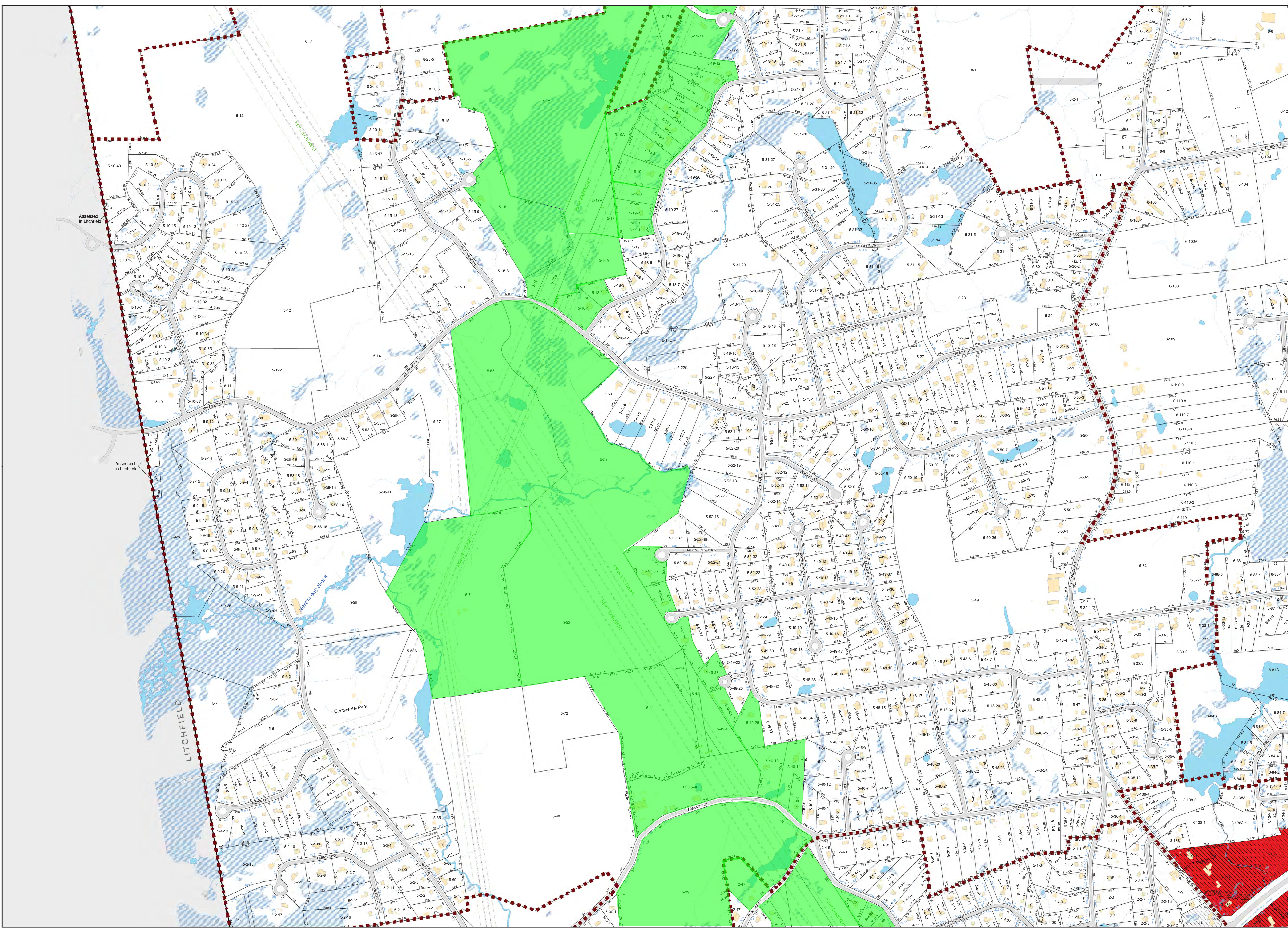
- Agricultural-Residential (AR-I)
- Multi-Family Residential (R-III)
- Commercial I (C-I)
- Commercial II (C-II)
- Commercial III (C-III)
- Commercial IV (C-IV)
- Mixed Use Commercial (MUC)
- Gateway Business (GB)
- Industrial I (IND-I)
- Industrial II (IND-II)
- Rte 28 Performance Overlay District
- Rte 102 Performance Overlay District
- Airport Overlay District (AD)
- Historic Overlay District
- Woodmont Commons PUD (PUD-1)
- MHT Noise Contours



Tax Map
005

Source:
Parcel lines are current as of April 1, 2014, and were mapped using aerial photo interpretation, AutoCAD engineering files or recorded deeds as reference. Base features were mapped by Infotech, LLC from aerial photography captured in Spring, 2010. Regular updates to both parcels and landbase features are performed as new development or lot adjustments are approved. These maps have been prepared for assessment purposes only and are not intended for legal description or conveyance.

Project: TaxMaps2014
Printed: 7/9/2014

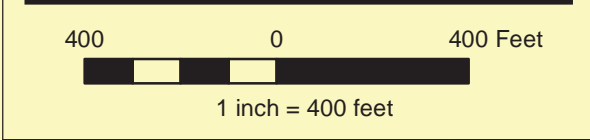
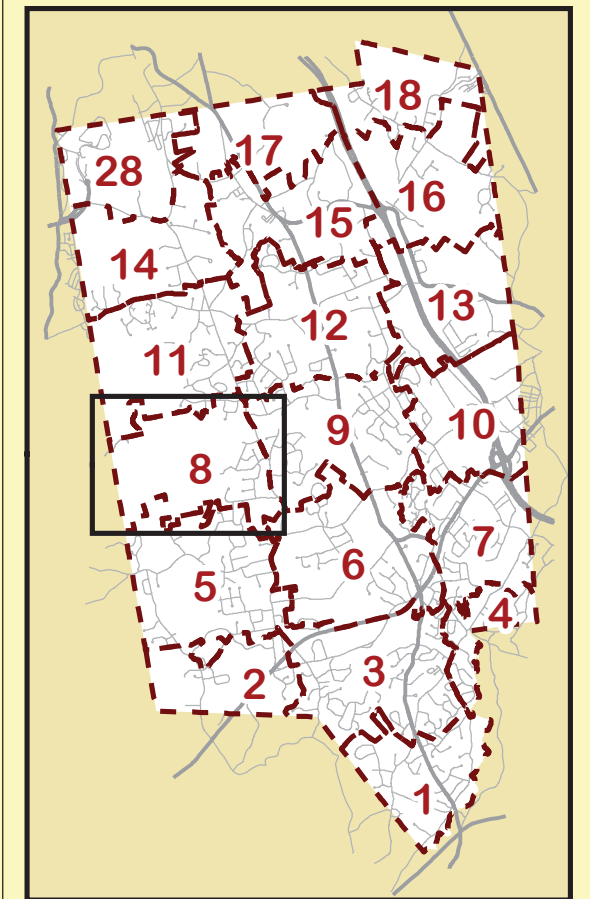


Town of Londonderry
New Hampshire



Parcel Atlas
April, 2014

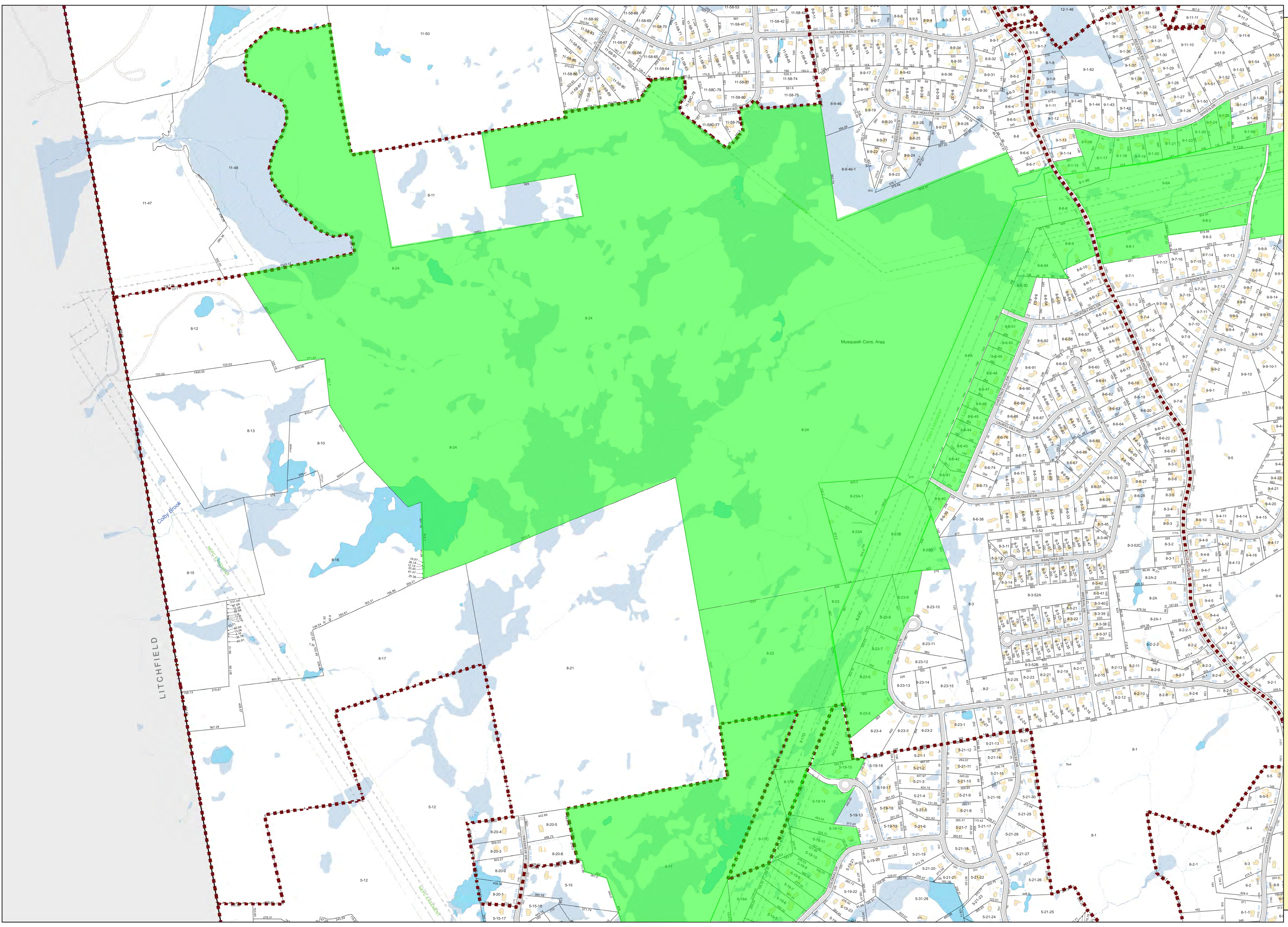
- Parcel Dimension
 - Parcel ID
 - Parcel Address
 - Parcel Frontage
 - Tax Map Divisions
- Paved Roads
 - Unpaved Roads
 - Buildings
 - Outbuildings or other structures
 - Utility Easements
 - Power Transmission Lines
 - Natural Gas Lines
 - Ponds
 - Wetlands
 - Towers
 - Named Streams
 - Un-named Streams
- Zoning Districts**
- Agricultural-Residential (AR-I)
 - Multi-Family Residential (R-III)
 - Commercial I (C-I)
 - Commercial II (C-II)
 - Commercial III (C-III)
 - Commercial IV (C-IV)
 - Mixed Use Commercial (MUC)
 - Gateway Business (GB)
 - Industrial I (IND-I)
 - Industrial II (IND-II)
 - Rte 28 Performance Overlay District
 - Rte 102 Performance Overlay District
 - Airport Overlay District (AD)
 - Historic Overlay District
 - Woodmont Commons PUD (PUD-1)
 - MHT Noise Contours



Tax Map
008

Source:
Parcel lines are current as of April 1, 2014, and were mapped using aerial photo interpretation, AutoCAD engineering files or recorded deeds as reference. Base features were mapped by Infotech, LLC from aerial photography captured in Spring, 2010. Regular updates to both parcels and landbase features are performed as new development or lot adjustments are approved.

These maps have been prepared for assessment purposes only and are not intended for legal description or conveyance.



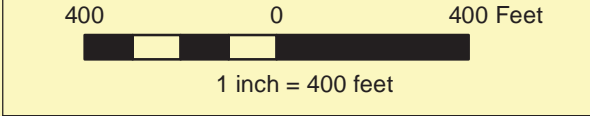
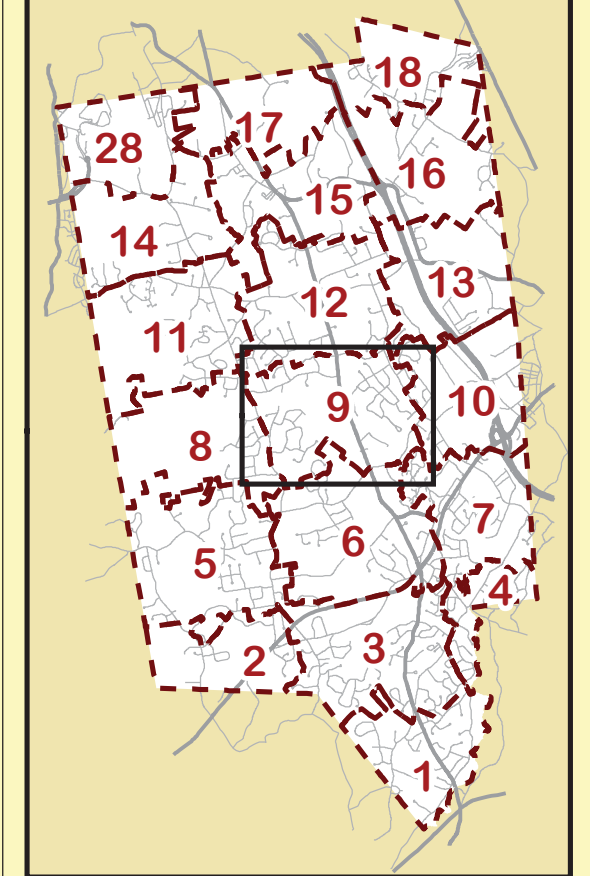
Town of Londonderry
New Hampshire



Parcel Atlas
April, 2014

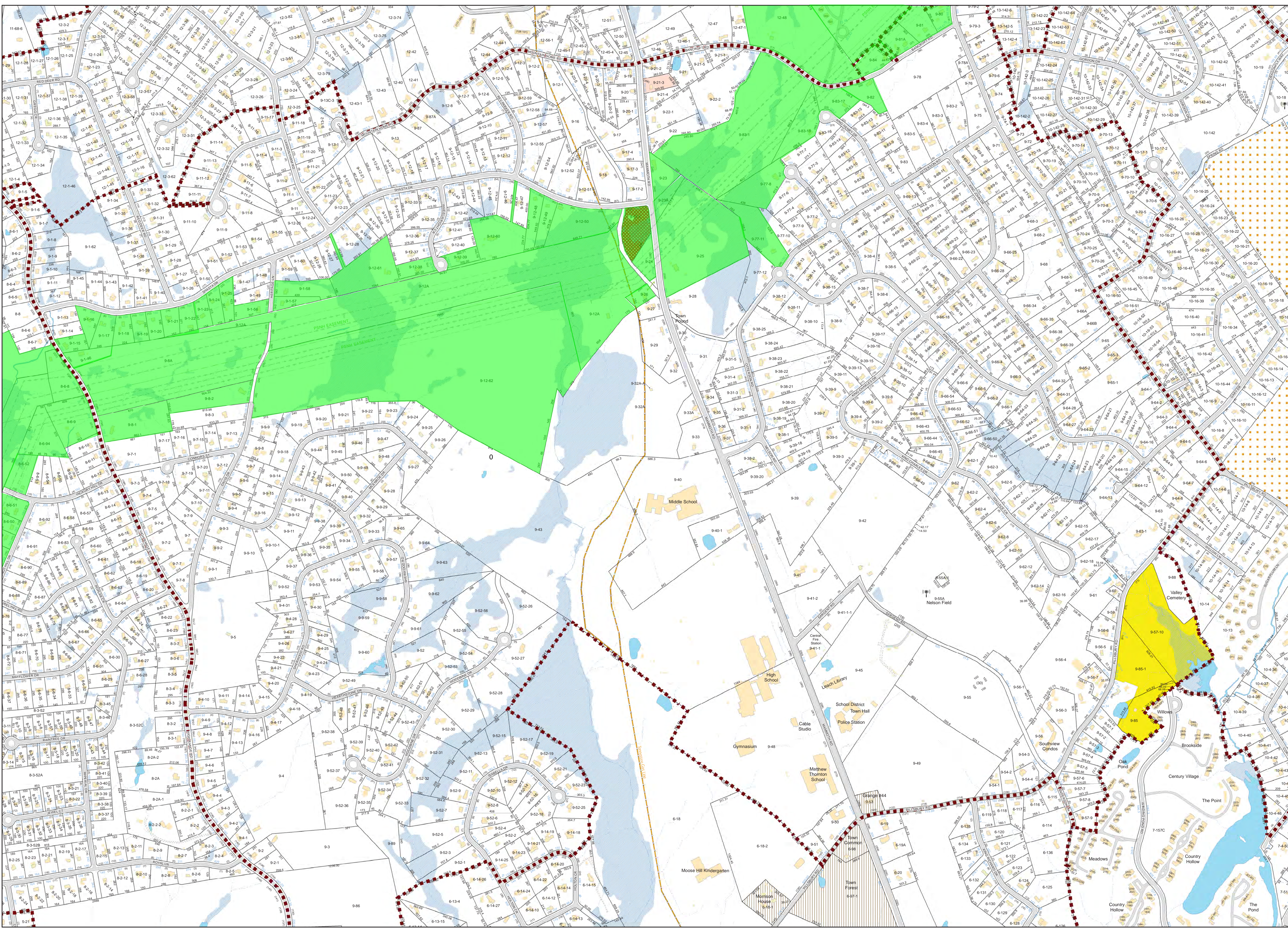
- Parcel Dimension
- Parcel ID
- Parcel Address
- Parcel Frontage
- Tax Map Divisions
- Paved Roads
- Unpaved Roads
- Buildings
- Outbuildings or other structures
- Utility Easements
- Power Transmission Lines
- Natural Gas Lines
- Ponds
- Named Streams
- Wetlands
- Un-named Streams
- Towers

- Zoning Districts**
- Agricultural-Residential (AR-I)
 - Multi-Family Residential (R-III)
 - Commercial I (C-I)
 - Commercial II (C-II)
 - Commercial III (C-III)
 - Commercial IV (C-IV)
 - Mixed Use Commercial (MUC)
 - Gateway Business (GB)
 - Industrial I (IND-I)
 - Industrial II (IND-II)
 - Rte 28 Performance Overlay District
 - Rte 102 Performance Overlay District
 - Airport Overlay District (AD)
 - Historic Overlay District
 - Woodmont Commons PUD (PUD-1)
 - MHT Noise Contours



Tax Map
009

Source:
Parcel lines are current as of April 1, 2014, and were mapped using aerial photo interpretation, AutoCAD engineering files or recorded deeds as reference. Base features were mapped by Infotech, LLC from aerial photography captured in Spring, 2010. Regular updates to both parcels and landbase features are performed as new development or lot adjustments are approved. These maps have been prepared for assessment purposes only and are not intended for legal description or conveyance.



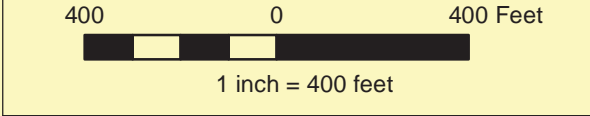
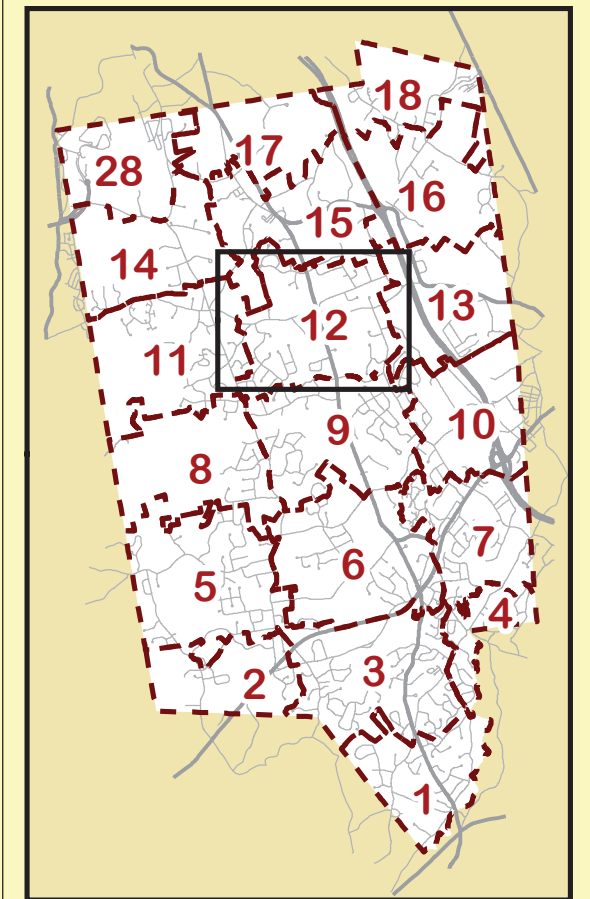
Town of Londonderry
New Hampshire



Parcel Atlas
April, 2014

- Parcel Dimension
- Parcel ID
- Parcel Address
- Parcel Frontage
- Tax Map Divisions
- Paved Roads
- Unpaved Roads
- Buildings
- Outbuildings or other structures
- Utility Easements
- Power Transmission Lines
- Natural Gas Lines
- Ponds
- Named Streams
- Wetlands
- Un-named Streams
- Towers

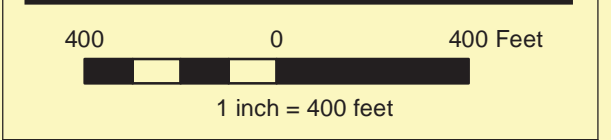
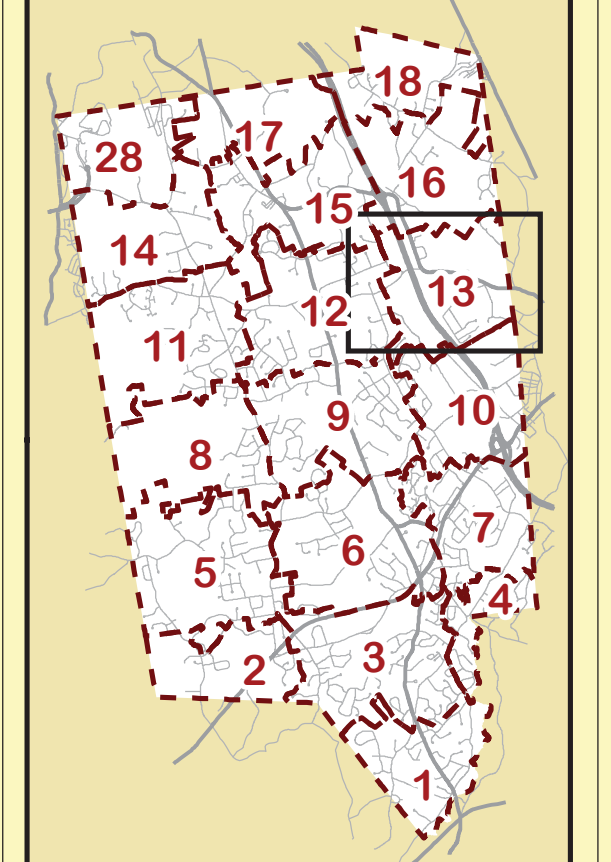
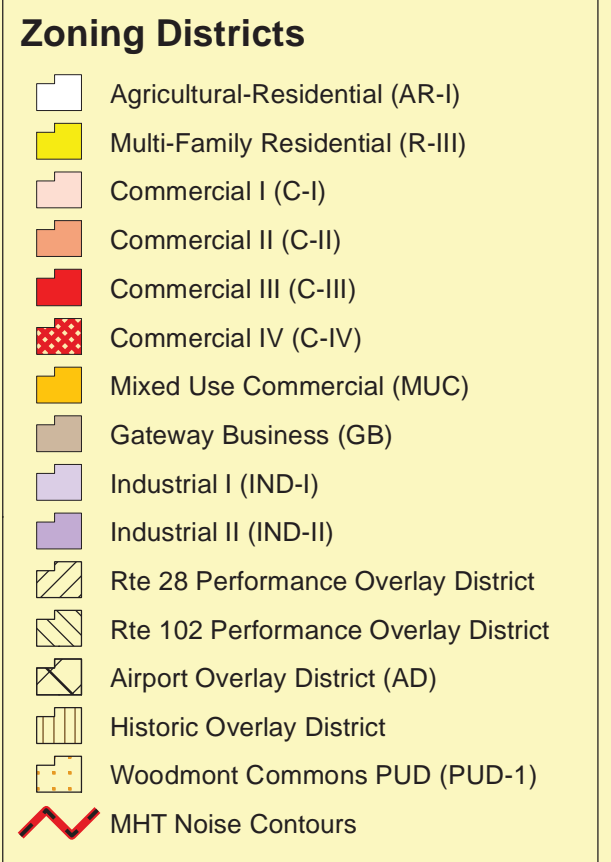
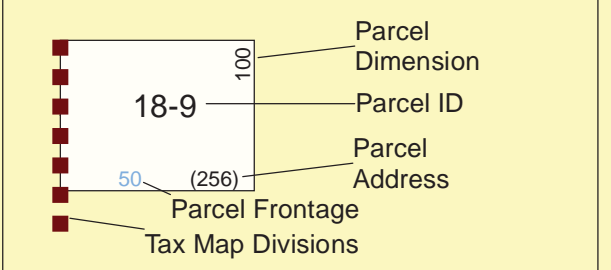
- Zoning Districts**
- Agricultural-Residential (AR-I)
 - Multi-Family Residential (R-III)
 - Commercial I (C-I)
 - Commercial II (C-II)
 - Commercial III (C-III)
 - Commercial IV (C-IV)
 - Mixed Use Commercial (MUC)
 - Gateway Business (GB)
 - Industrial I (IND-I)
 - Industrial II (IND-II)
 - Rte 28 Performance Overlay District
 - Rte 102 Performance Overlay District
 - Airport Overlay District (AD)
 - Historic Overlay District
 - Woodmont Commons PUD (PUD-1)
 - MHT Noise Contours



Tax Map
012

Source:
Parcel lines are current as of April 1, 2014 and were mapped using aerial photo interpretation, AutoCAD engineering files or recorded deeds as reference. Base features were mapped by Infotech, LLC from aerial photography captured in Spring, 2010. Regular updates to both parcels and landbase features are performed as new development or lot adjustments are approved. These maps have been prepared for assessment purposes only and are not intended for legal description or conveyance.

Project: TaxMaps2014
Printed: 7/9/2014



Tax Map 013

Source:
Parcel lines are current as of April 1, 2014, and were mapped using aerial photo interpretation, AutoCAD engineering files or recorded deeds as reference. Base features were mapped by Infotech, LLC from aerial photography captured in Spring, 2010. Regular updates to both parcels and landbase features are performed as new development or lot adjustments are approved.

These maps have been prepared for assessment purposes only and are not intended for legal description or conveyance.

