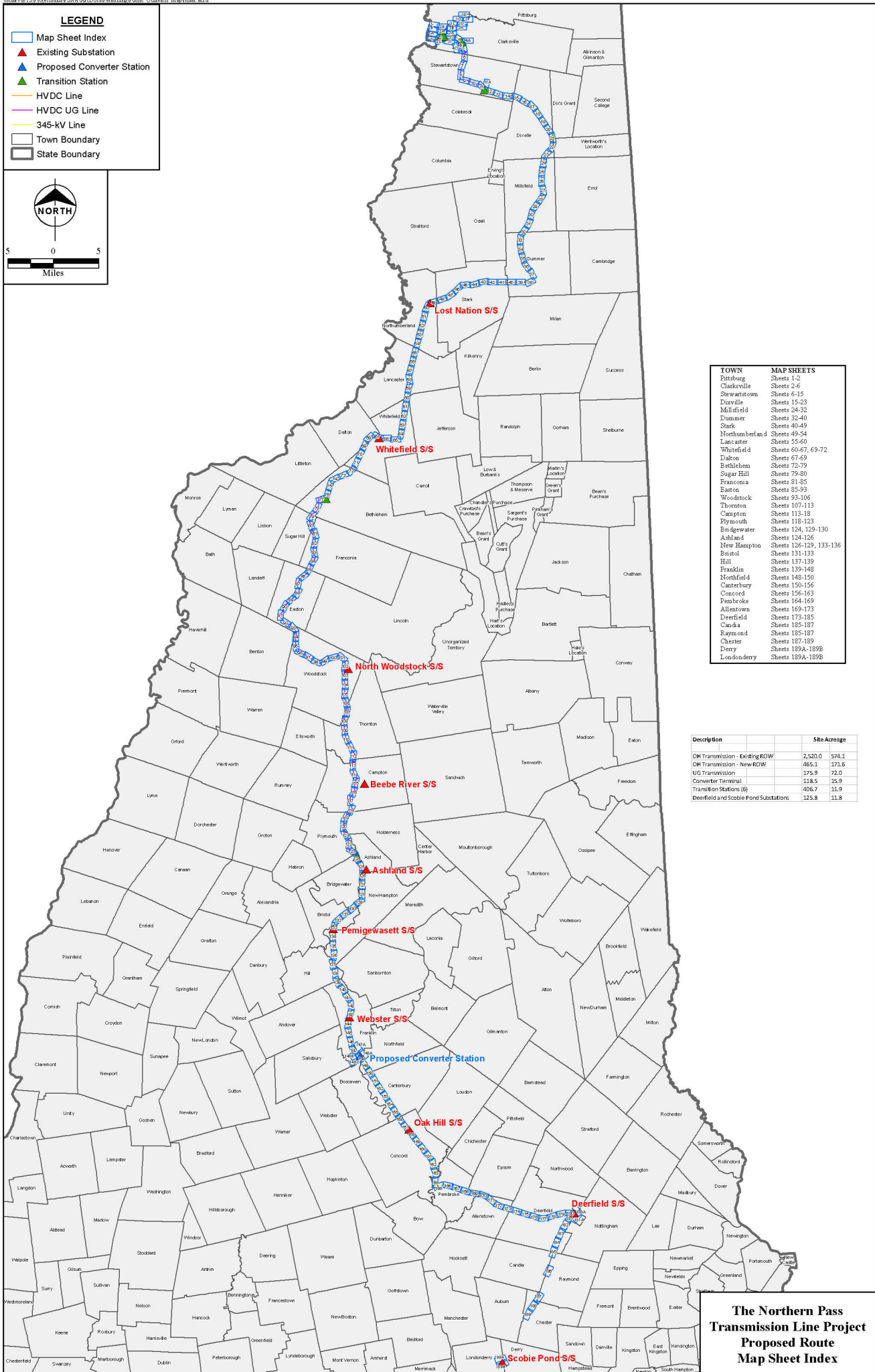
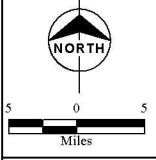


LEGEND

- Map Sheet Index
- ▲ Existing Substation
- ▲ Proposed Converter Station
- ▲ Transition Station
- HVDC Line
- HVDC UG Line
- 345-kV Line
- Town Boundary
- State Boundary



TOWN	MAP SHEETS
Fittsburg	Sheets 1-2
Clarksville	Sheets 2-6
Stewartstown	Sheets 6-15
Dorville	Sheets 15-23
Millsfield	Sheets 24-32
Dummer	Sheets 32-40
Stark	Sheets 40-49
Northumberland	Sheets 49-54
Lancaster	Sheets 55-60
Whitefield	Sheets 60-67, 69-72
Dalton	Sheets 67-69
Bethlehem	Sheets 72-79
Sugar Hill	Sheets 79-80
Franconia	Sheets 81-85
Easton	Sheets 85-93
Woodstock	Sheets 93-106
Thornton	Sheets 107-113
Campton	Sheets 113-18
Plymouth	Sheets 118-123
Bridgewater	Sheets 124, 129-130
Ashland	Sheets 134-126
New Hampton	Sheets 126-129, 133-136
Bristol	Sheets 131-133
Hill	Sheets 137-139
Franklin	Sheets 139-148
Northfield	Sheets 148-150
Carterbury	Sheets 150-156
Concord	Sheets 156-163
Pembroke	Sheets 164-169
Allentown	Sheets 169-173
Deerfield	Sheets 173-185
Canada	Sheets 185-187
Raymond	Sheets 185-187
Chester	Sheets 187-189
Derry	Sheets 189A-189B
Londonderry	Sheets 189A-189B

Description	Area	Site Acreage
OH Transmission - Existing ROW	2,520.0	574.1
OH Transmission - New ROW	465.1	172.6
UG Transmission	175.9	72.0
Converter Terminal	118.5	35.9
Transition Stations (6)	406.7	11.9
Deerfield and Scobie Pond Substations	125.8	11.8

**The Northern Pass
Transmission Line Project
Proposed Route
Map Sheet Index**

Source: NH GRANIT GIS Data, Buss & McDowell