



June 5, 2015

Mary Kate Ryan
State Survey Coordinator
New Hampshire Division of Historical Resources
19 Pillsbury Street – 2nd Floor
Concord, NH 03301

Re: Errata Sheets for Project Area Forms, for Northern Pass Transmission Line Project,
NHDHR RPR-4680

Dear Ms. Ryan:

Please find attached errata sheets for the Project Area Forms (PAF) for the Northern Pass Transmission Project-White Mountains region. These errata sheets have been prepared to account for text and map edits to the PAF that was submitted on May 1, 2015. If we can provide you with any additional information, please do not hesitate to contact me or Stefan Claesson, Project Manager, at your earliest convenience.

Sincerely,

A handwritten signature in black ink that reads "Jenna E. Higgins". The signature is fluid and cursive, with the first letters of each name being capitalized and prominent.

Jenna E. Higgins
Architectural Historian
Phone: 603-319-6939
Email: jenna@searchinc.com

cc: Kent Sharp, SE Group; Caitlin Callaghan, DOE

Errata Sheets

These errata sheets are for the Project Area Form for the Northern Pass Transmission Project- White Mountains region, which was submitted to the New Hampshire Division of Historical Resources on May 1, 2015. The sheets note both substantial errors (those that affect content or meaning), and mapping errors.

Substantial Errata

Page	For	Read	Explanation
2, line 15	...84003197, BET0019, BET0020, CAM0002...	...84003197, BCM-RR, BET0020, CAM0001, CAM0002...	BCM-RR and CAM0001 added. BET0019 removed, included with NR-listed Rocks Estate (NR84003197)
55, line 37	markers, bridges, and culverts.	markers, bridges, and culverts that were associated with the Boston, Concord, and Montreal Railroad (BCM- RR).	Added reference to previously inventoried linear district, BCM-RR.
56, line 34	A total of 24 previously identified resources...	A total of 25 previously identified resources...	Adjusted counts to include the addition of BCM-RR.
56, line 35	Of these, nine are...	Of these, 14 are...	Adjusted counts to include the addition of BCM-RR, and adjusted counts in text to correspond with data in Table 2.
56, line 36	the status of 13 properties	the status of nine properties	Adjusted counts in text to correspond with data in Table 1.

58, Table 1, Row 1	84003197/BET0019	84003197	Removed BET0019 as it is part of NR-listed Rocks Estate (NR84003197).
58, Table 1, Row 2	Insert new row	Insert new row provided on following page	Added previously identified BCM-RR in Table 1.
63, line 10	Of the 24 previously...	Of the 25 previously...	Adjusted counts to include the addition of BCM-RR.
63, line 11	Register, two districts,	Register, three districts...	Accounted for the addition of BCM-RR in Table 2.
63. line 14-15	(NR 84003197 and BET0019)	(NR 84003197)	Removed BET0019 as it is part of NR-listed Rocks Estate (NR84003197).
63, line 20	In total, one previously identified historic district and...	In total, three previously identified historic districts and...	Accounted for the addition of BCM-RR and NH-AT.
64, Table 2, Row 1	84003197/BET0019	84003197	Removed BET0019 as it is part of NR-listed Rocks Estate (NR84003197).
64, Table 2, Row 2	Insert new row	Insert new row provided on following page	Added previously identified BCM-RR as recommended property in Table 2.
67, line 2	King's Square Historic District	Insert paragraph provided on following page	Include discussion of BCM-RR as a district recommended for further inventory.

Table 1. Previously Identified Historic Properties or Resources that Intersect the ZVI.

NRHP/NHDHR ID	Name	Address	Town	District	Status	Setting	Integrity Statement
BCM-RR	Boston, Concord, and Montreal Railroad	N/A	Multi-Town	Boston, Concord, and Montreal Railroad	NR Eligible District	Yes	Retains varying degrees of integrity of design, materials, feeling and association, but remains largely intact with sufficient resources to read as a rail line. The area surrounding the line includes rural, residential, industrial, and commercial areas. This variation of setting is vital to understanding the rail line's historical associations and significance in the areas of tourism-related travel and the logging industry within the White Mountains.

Table 2. Previously Identified Historic Properties or Districts in the White Mountains that Intersect the ZVI Recommended for Inventory and/or Visual Impact Assessment.

NRHP/NHDHR ID	Street Address / Property Name	Town	Property Type	Historic Context	Photograph #	Integrity Statement
BCM-RR	Boston, Concord, and Montreal Railroad Historic District	Multi-Town	19th-century railroad line and associated structures	86. The Railroads in NH, 1842–1960	N/A	Retains varying degrees of integrity of design, materials, feeling and association, but remains largely intact with sufficient resources to read as a rail line. The area surrounding the line includes rural, residential, industrial, and commercial areas. This variation of setting is vital to understanding the rail line's historical associations and significance in the areas of tourism-related travel and the development of the logging industry within the White Mountains. Sections of the line within the White Mountains have not previously been surveyed, and should be documented on an updated Historic District Area Form for the BCM-RR. A visual impact assessment is also recommended.

Page 67, Line 2: Insert the following paragraph above the discussion on King's Square Historic District:

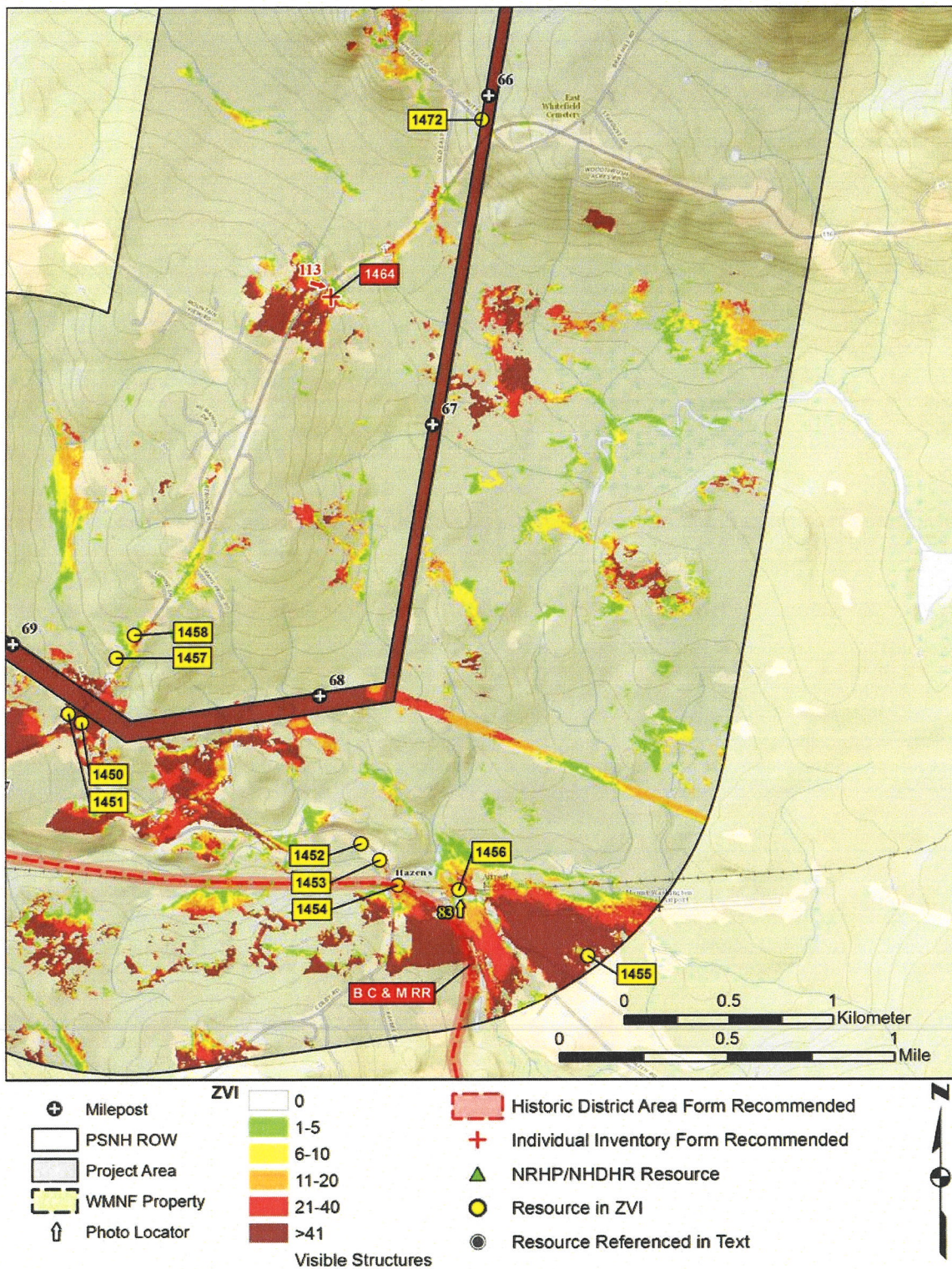
Boston, Concord, & Montreal Railroad (BCM-RR)

The Boston, Concord, & Montreal (BCM) Railroad was determined NRHP-eligible by NHDHR in 2002 as a linear historic district for its significant role in transportation, commerce, and tourism in New Hampshire from 1848-1952 (NHDHR 2002a). It is significant in the White Mountains for its role in the development of logging and tourism industries. No extant buildings related to the railroad were found during a windshield survey of the White Mountains indirect APE, but other contributing elements to the district, including railroad ties, bridges, culverts, whistle posts, etc. are still extant. As the project is likely to only have visual effects, it is unlikely the project will affect these built structures; however, the existing PSNH ROW crosses the railroad bed and line, which are relatively intact and the project may have a direct impact to these small sections of the line during construction phases that may involve digging across sections of the existing railroad bed. The 165+ mile long railroad line has varying degrees of integrity of design, materials, feeling and association, but remains largely intact and sufficient resources remain (railroad ties, whistle posts, bridges, culverts, etc.) to still read as a rail line. The area surrounding the line includes rural, residential, industrial, and commercial areas; this variation of setting is vital to telling the story of the railroad and its significance in the areas of transportation and commerce in New Hampshire's history. Sections of the railroad line have not been surveyed within the White Mountains, but have been surveyed in other areas of New Hampshire. An updated individual inventory form for the railroad line should be completed, with particular attention paid to those sections of the line in the White Mountains that have not previously been surveyed, and that are in viewshed of the project.

Mapping Errata

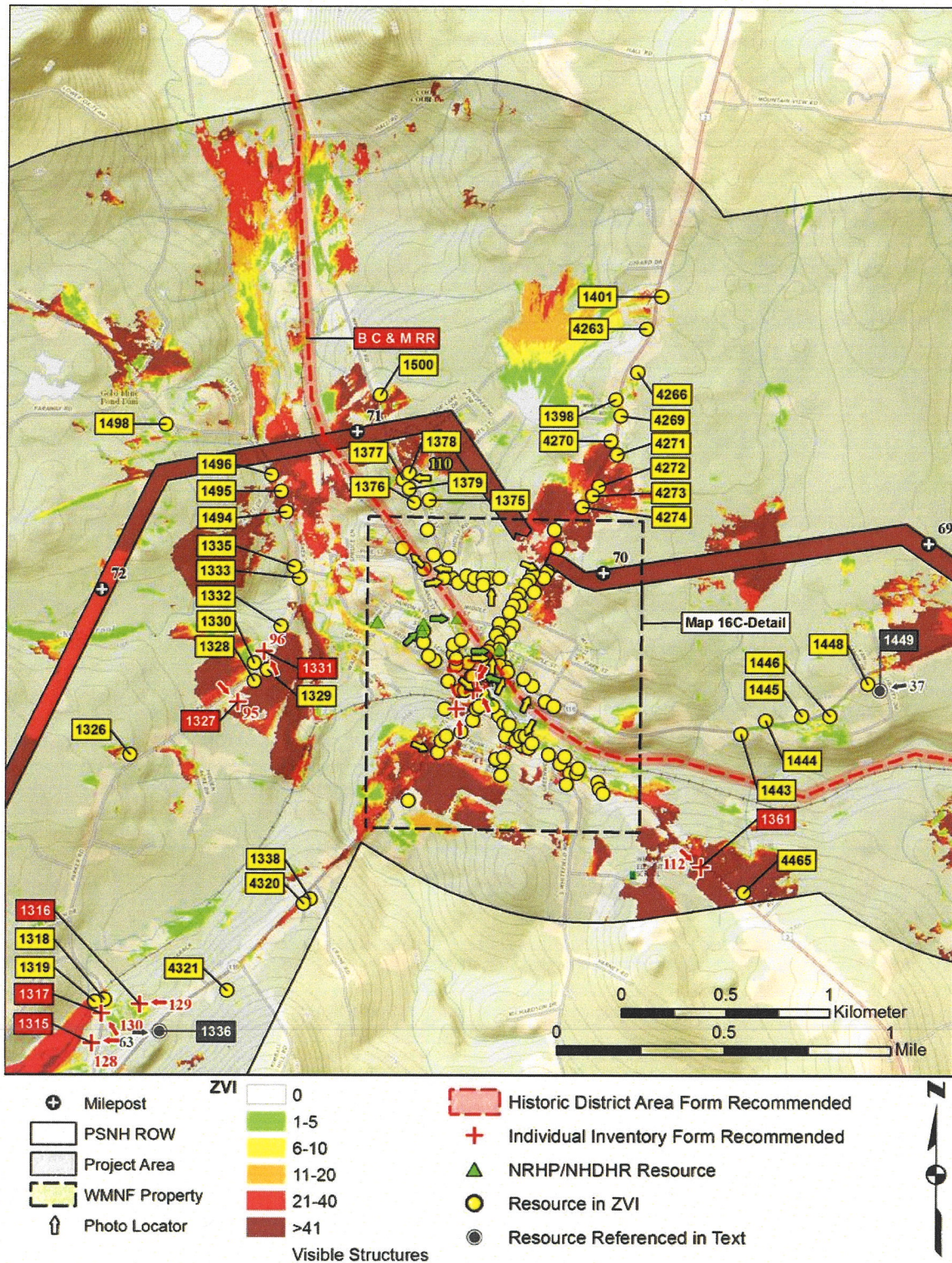
Page	For	Replace with	Explanation
7	Sketch Map B	Corrected Sketch Map B	Added BCM-RR as recommended property.
8	Sketch Map C	Corrected Sketch Map C	Added BCM-RR as recommended property. Added missing labels for ZVI Properties.
9	Sketch Map C Detail	Corrected Sketch Map C Detail	Added BCM-RR as recommended property.

10	Sketch Map D	Corrected Sketch Map D	Added BCM-RR as recommended property.
11	Sketch Map E	Corrected Sketch Map E	Added BCM-RR as recommended property.
12	Sketch Map F	Corrected Sketch Map F	Added BCM-RR as recommended property. Removed BET0019 - was in the wrong location, and associated with the Rocks Estate (NR84003197).
20	Sketch Map M	Corrected Sketch Map M	Added BCM-RR as recommended property.
22	Sketch Map N	Corrected Sketch Map N	Added BCM-RR as recommended property.
23	Sketch Map O	Corrected Sketch Map O	Added BCM-RR as recommended property.
24	Sketch Map P	Corrected Sketch Map P	Added BCM-RR as recommended property.
25	Sketch Map Q	Corrected Sketch Map Q	Added BCM-RR as recommended property.
26	Sketch Map R	Corrected Sketch Map R	Added BCM-RR as recommended property.



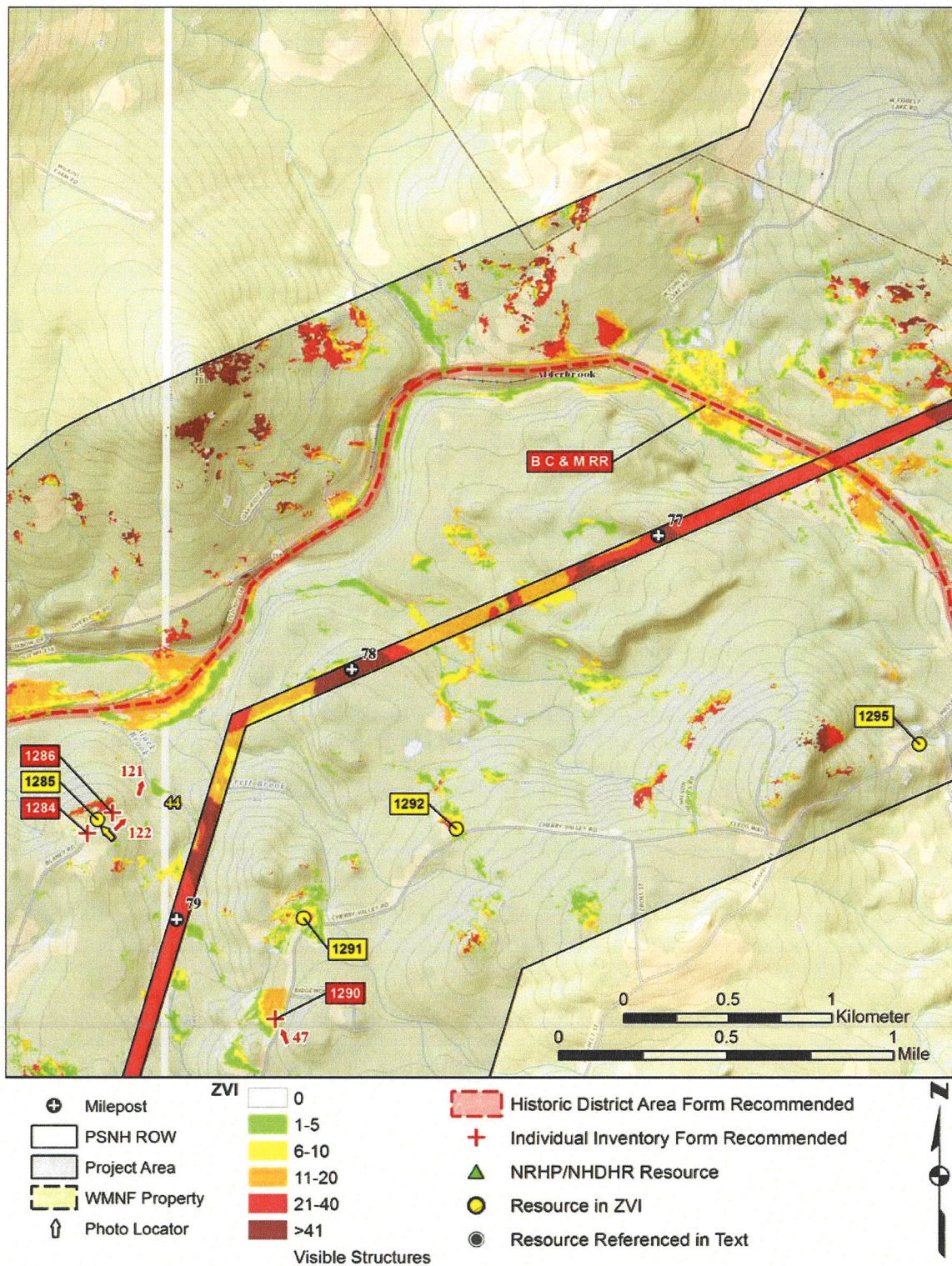
Corrected Sketch Map B.

Errata for Project Area Form Northern Pass – White Mountains.



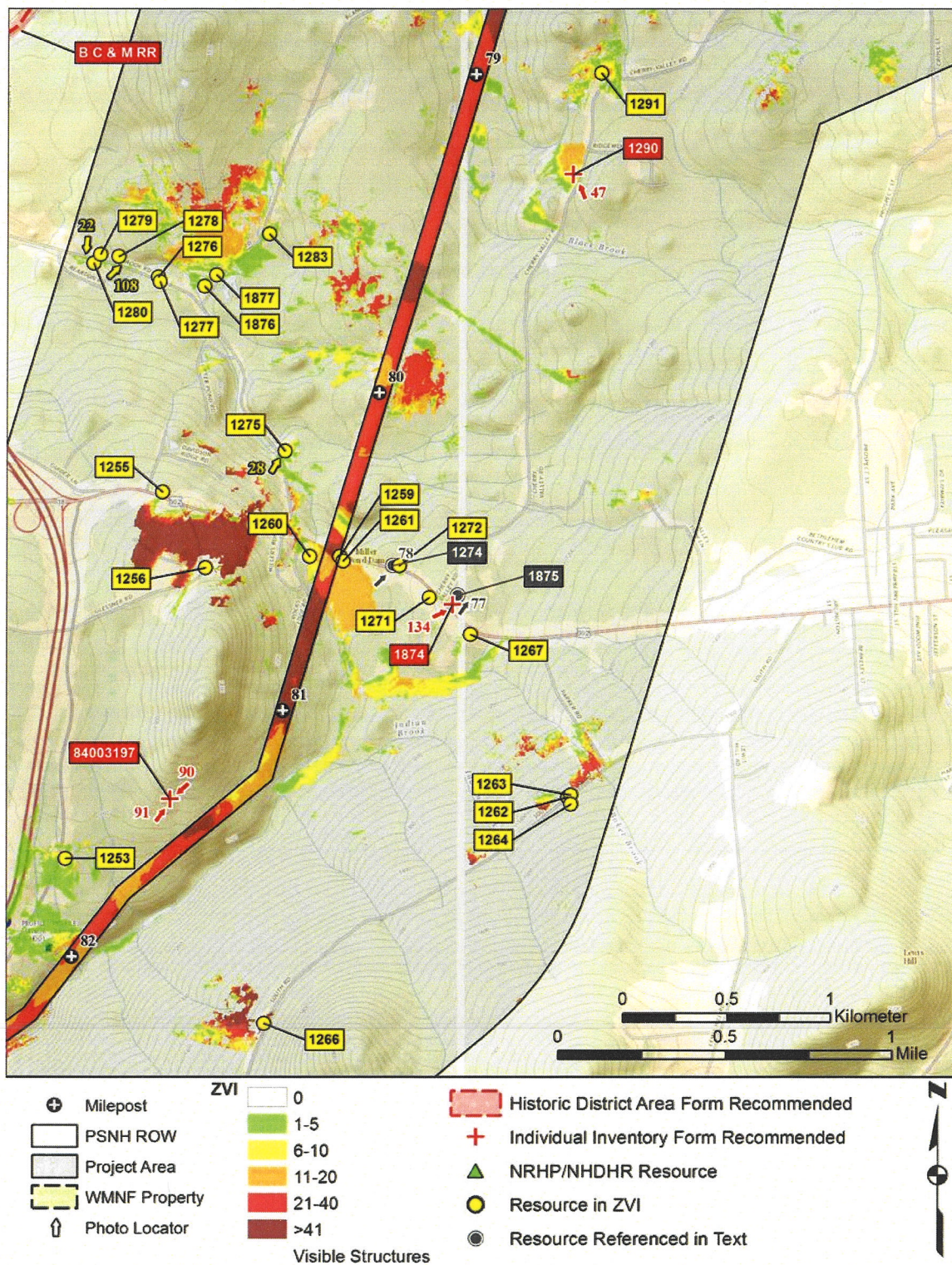
Corrected Sketch Map 16 C.

Errata for Project Area Form Northern Pass – White Mountains.



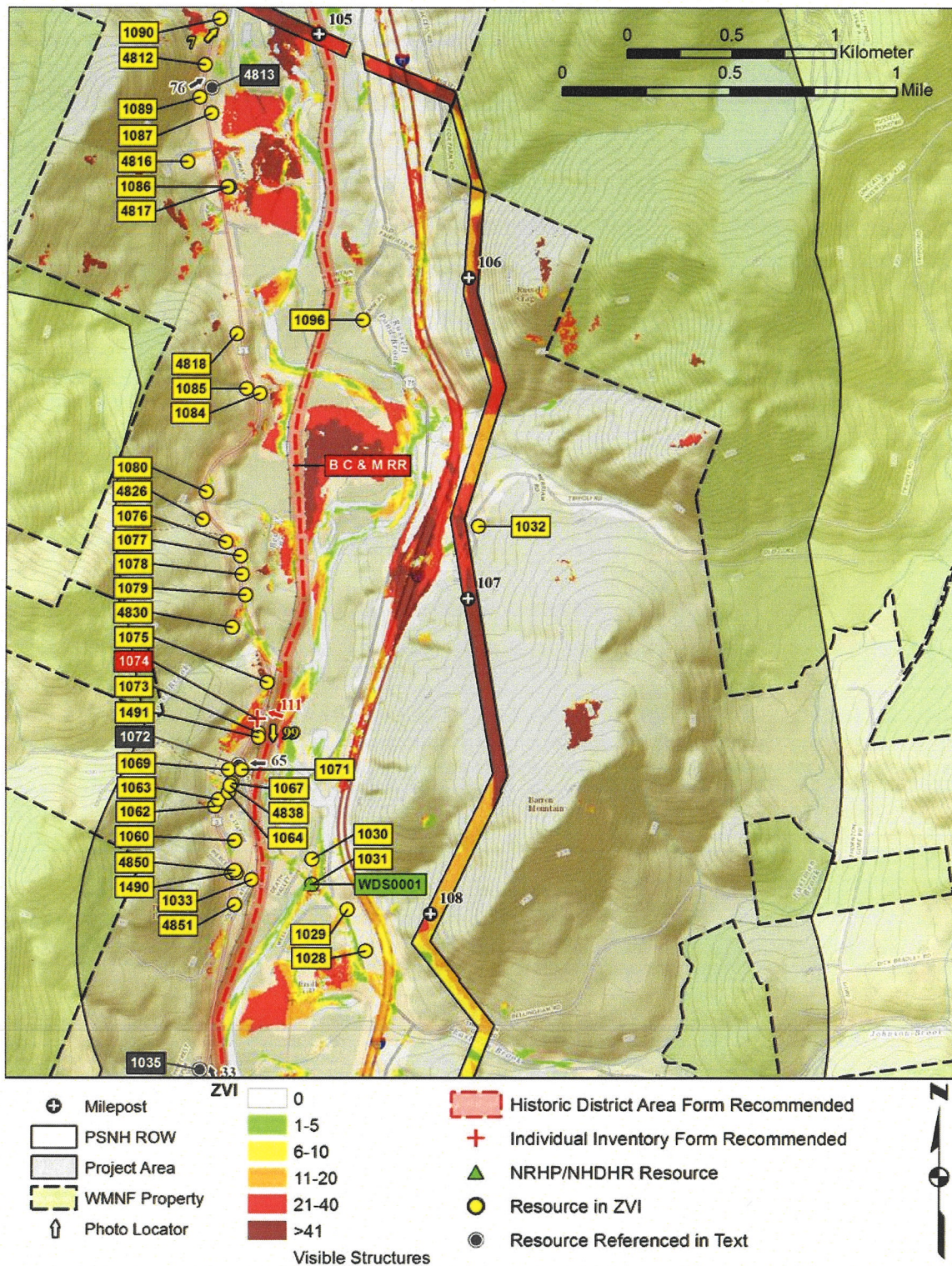
Corrected Sketch Map 16 E.

Errata for Project Area Form Northern Pass – White Mountains.



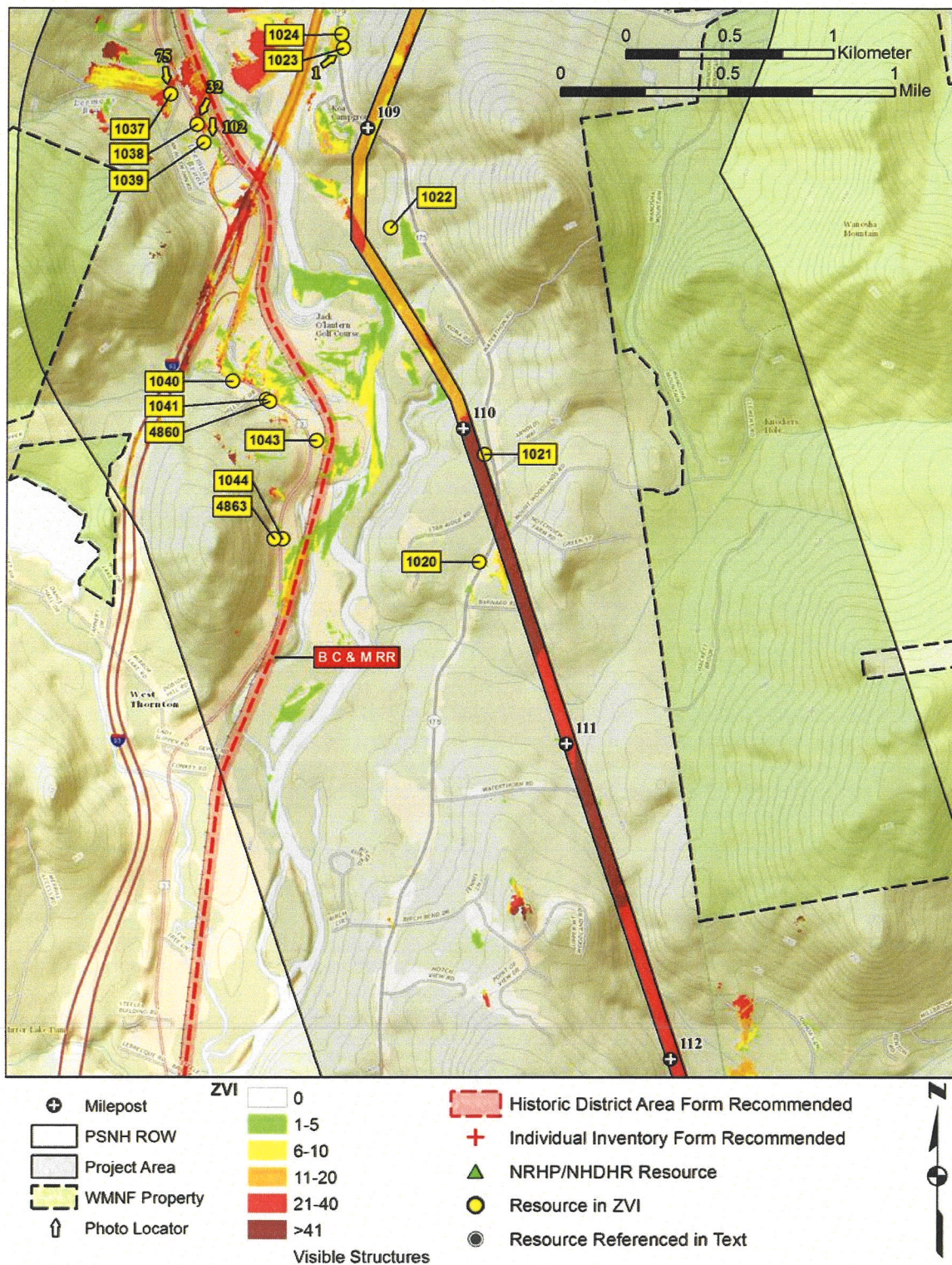
Corrected Sketch Map 16 F.

Errata for Project Area Form Northern Pass – White Mountains.



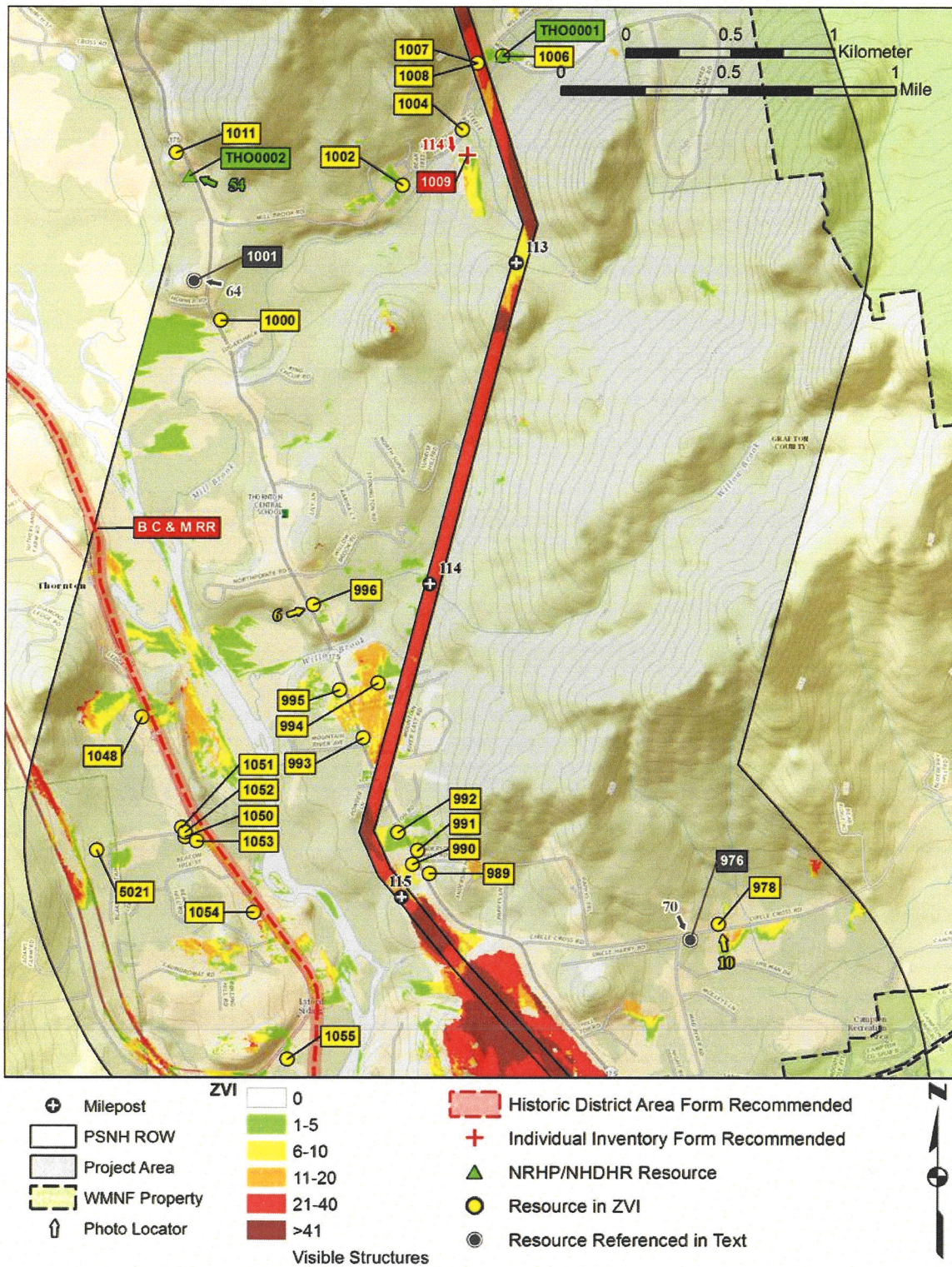
Corrected Sketch Map 16 N.

Errata for Project Area Form Northern Pass – White Mountains.



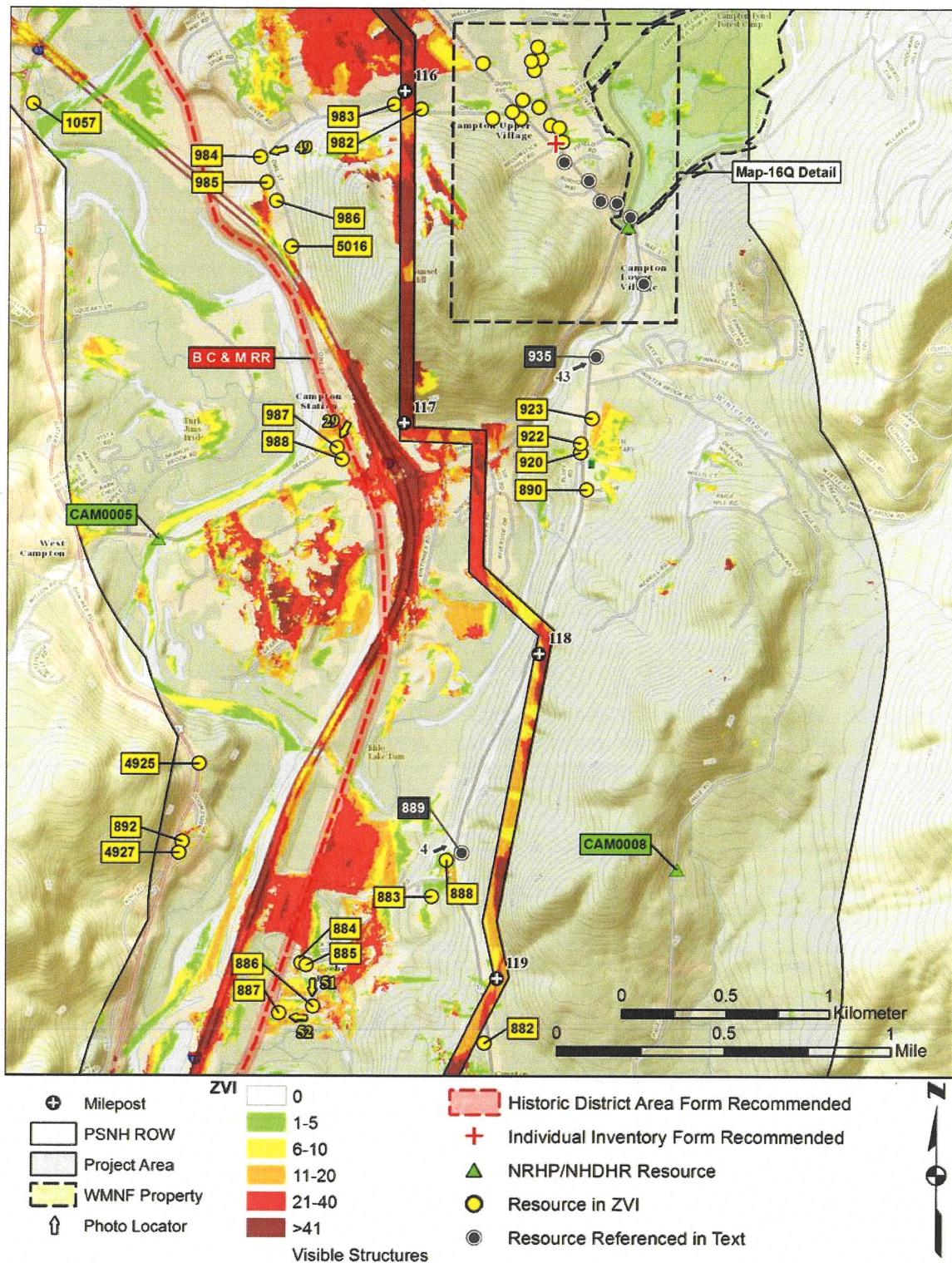
Corrected Sketch Map 16 O.

Errata for Project Area Form Northern Pass – White Mountains.



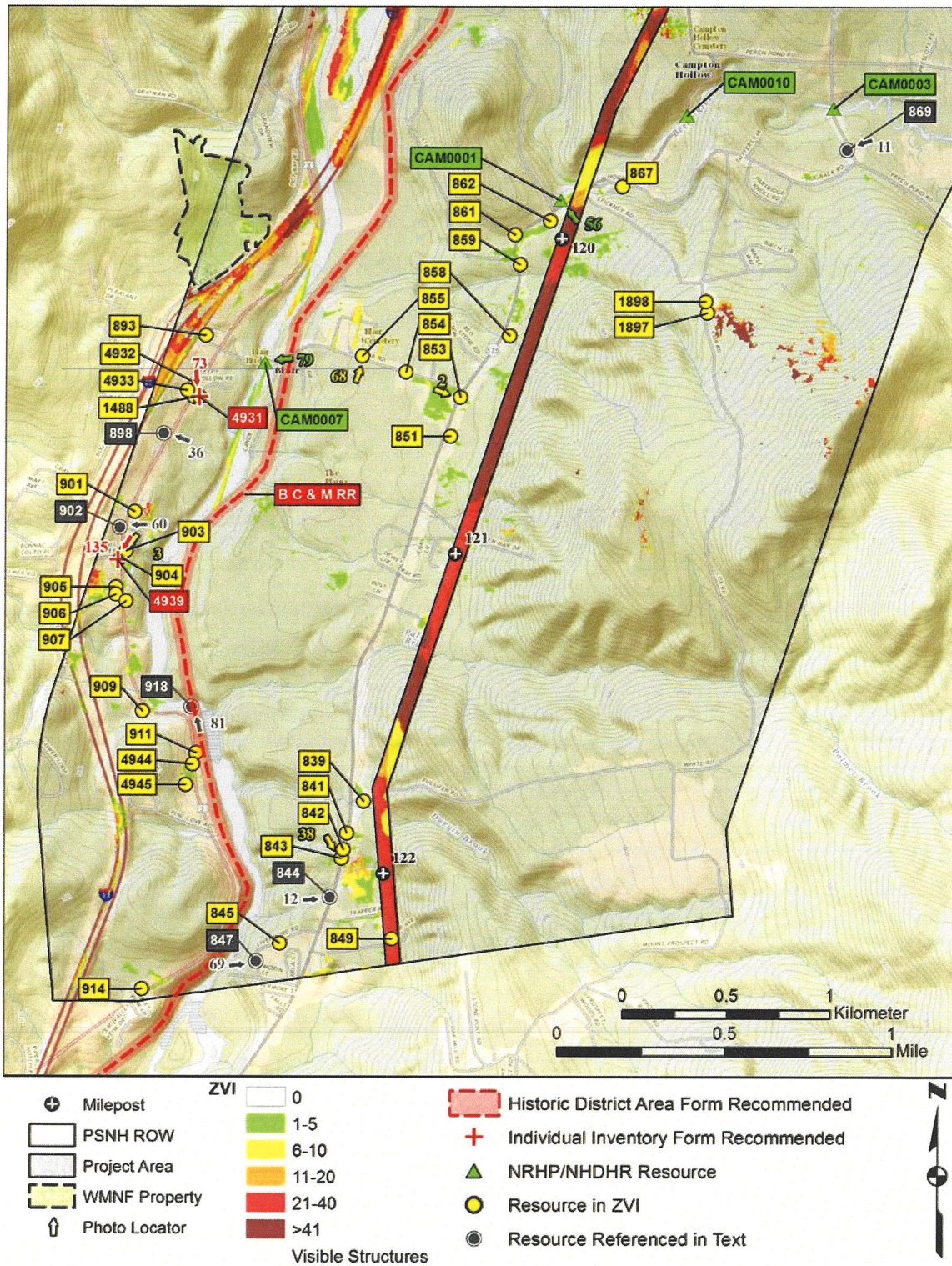
Corrected Sketch Map 16 P.

Errata for Project Area Form Northern Pass – White Mountains.



Corrected Sketch Map 16 Q.

Errata for Project Area Form Northern Pass – White Mountains.



Corrected Sketch Map 16 R.

Errata for Project Area Form Northern Pass – White Mountains.