

Melinda McElwaine

VISIT SCENIC
NEW HAMPSHIRE

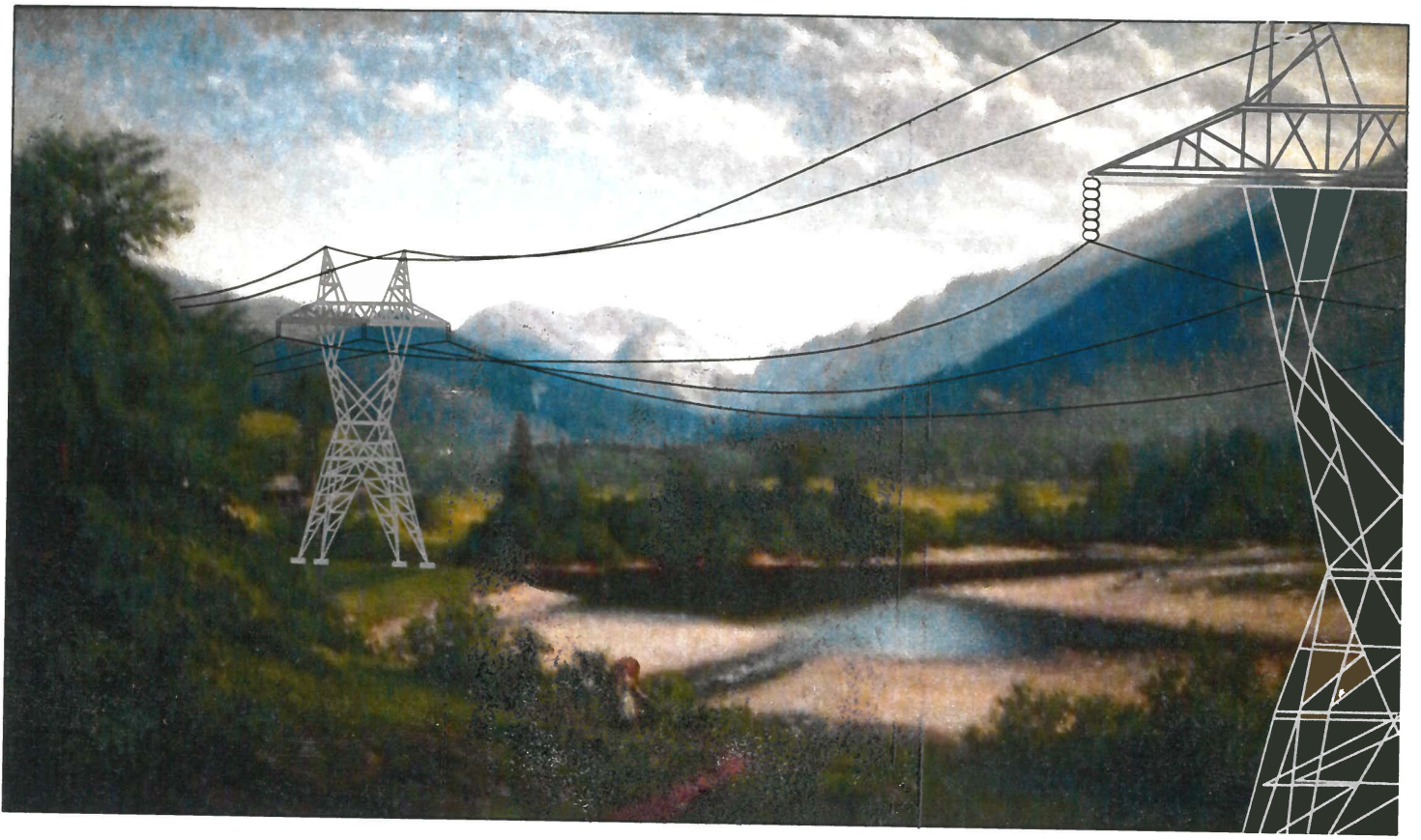
2148 N Pinecrest Way Rd. VT 050 2 L
SLC, Ut. 84108
19 AUG 2017 9M



Dear Ms. Monroe:
I grew up in the White Mountains
and have a vacation home in Sugar
Hill. As of us we have power
corridors and giant electrical towers
running through our landscape.
It makes no sense that Hydro Quebec,
a company guilty of tremendous
environmental disturbance, does not
utilize what already exists. I understand they are
reluctant to use it because it would cost them too
much. More than ^{just} scenic beauty, tourism is an economic
engine for this area. Dragging up the back roads and building
giant towers would ruin that.

16 AUG '17 AM 10:54

NEW HAMPSHIRE SITE EVALUATION COMMITTEE
ATTN: PAMELA MONROE, ADM.
21 SOUTH FRUIT STREET
SUITE 10
CONCORD,
NEW HAMPSHIRE 03301



NEW HAMPSHIRE'S HERITAGE

