

APPENDIX 1

CITY OF CONCORD'S
PRE-FILED TESTIMONY
DECEMBER 30, 2016



Photo 1 - Brookwood Drive, Overhead View (Google Earth)



Photo 2 - 16 Brookwood Drive, Street View (9-26-16)



Photo 3 - 16 Brookwood Drive, Street View (9-26-16)



Photo 4 - 14 Brookwood Drive, Street View (9-26-16)



Photo 5 - 14 Brookwood Drive, Street View (9-26-16)



Photo 6 - 12 Brookwood Drive, Street View (9-26-16)



Photo 7 - 12 Brookwood Drive, Street View (9-26-16)



Photo 8 - 12 Brookwood Drive, Street View (9-26-16)



Photo 9 - 10 (8) Brookwood Drive, Street View (9-26-16)



Photo 10 - 10 (8) Brookwood Drive, Street View (9-26-16)



Photo 11 - 10 (8) Brookwood Drive, Street View (9-26-16)



Photo 12 – 6 Brookwood Drive, Street View (9-26-16)



Photo 13 – 4 Brookwood Drive, Street View (9-26-16)



Photo 14 - 6 Fox Run, Street View (9-26-16)



Photo 15 - 1 Fox Run, Street View (9-26-16)



Photo 16 - 37 Hoit Road, Street View (9-26-16)



Photo 17 - 37 Hoit Road, Street View (9-26-16)



Photo 18 - 41 Hoit Road, Street View (Google Earth)



Photo 19 - 41 Hoit Road, Overhead (Google Earth)



Photo 20 - 41 Hoit Road, Street View (9-26-16)



Photo 21 - 41 Hoit Road, Street View (9-26-16)



Photo 22 - 41 Hoit Road, Street View (9-26-16)



Photo 23 - 41 Hoit Road, Street View (9-26-16)



Photo 24 - 540 Mountain Road, View of Road (9-26-16)



Photo 25 - 57 Hoit Road, View of Road (9-26-16)



Photo 26 – Sanborn Road, Overhead (Google Earth)

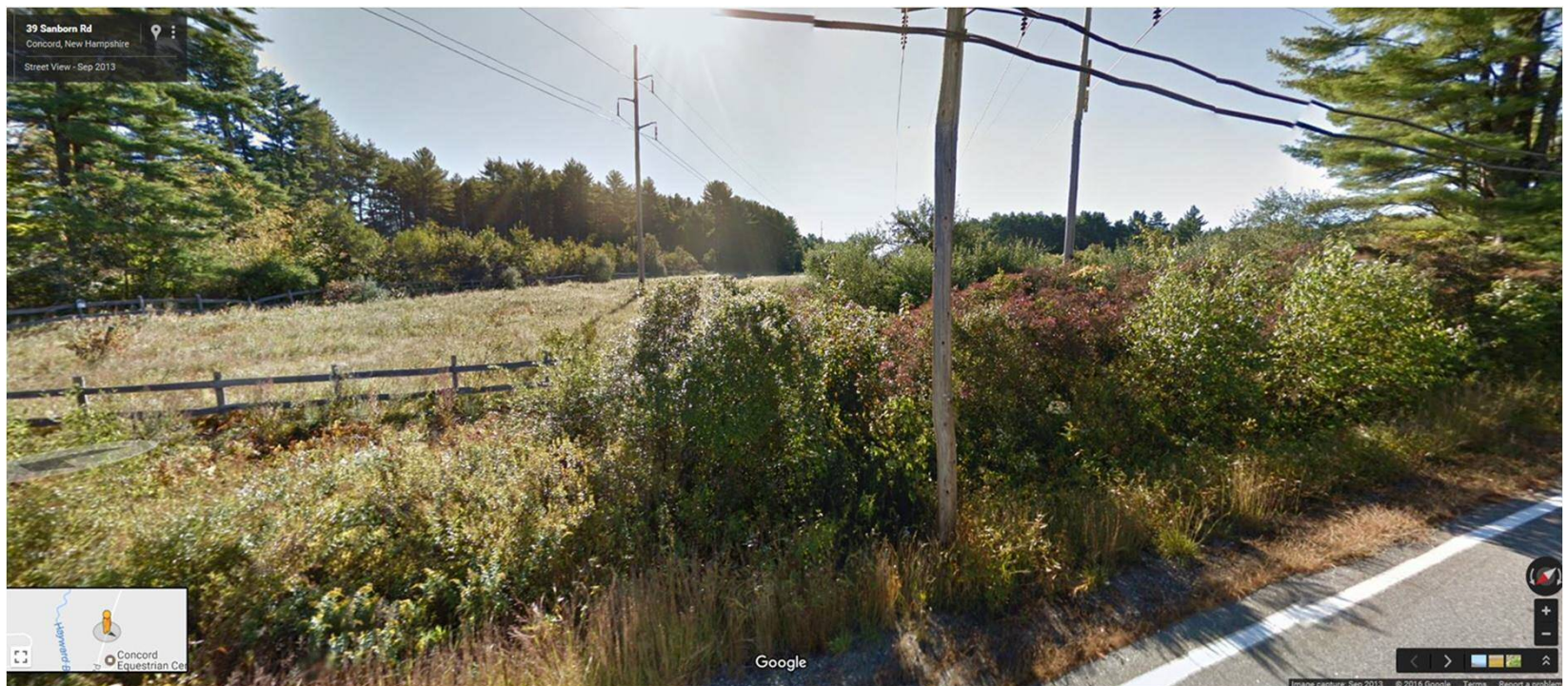


Photo 27 - 56 Sanborn Road, Street View (Google Earth)



Photo 28 - 56 Sanborn Road, Street View (9-26-16)



Photo 29 - 61 Sanborn Road, Street View (9-26-16)



Photo 30 - 67 Sanborn Road, Street View (9-26-16)



Photo 31 - Shaker Road, Street View (Google Earth)



Photo 32 - 183 Shaker Road, Street View (Google Earth)

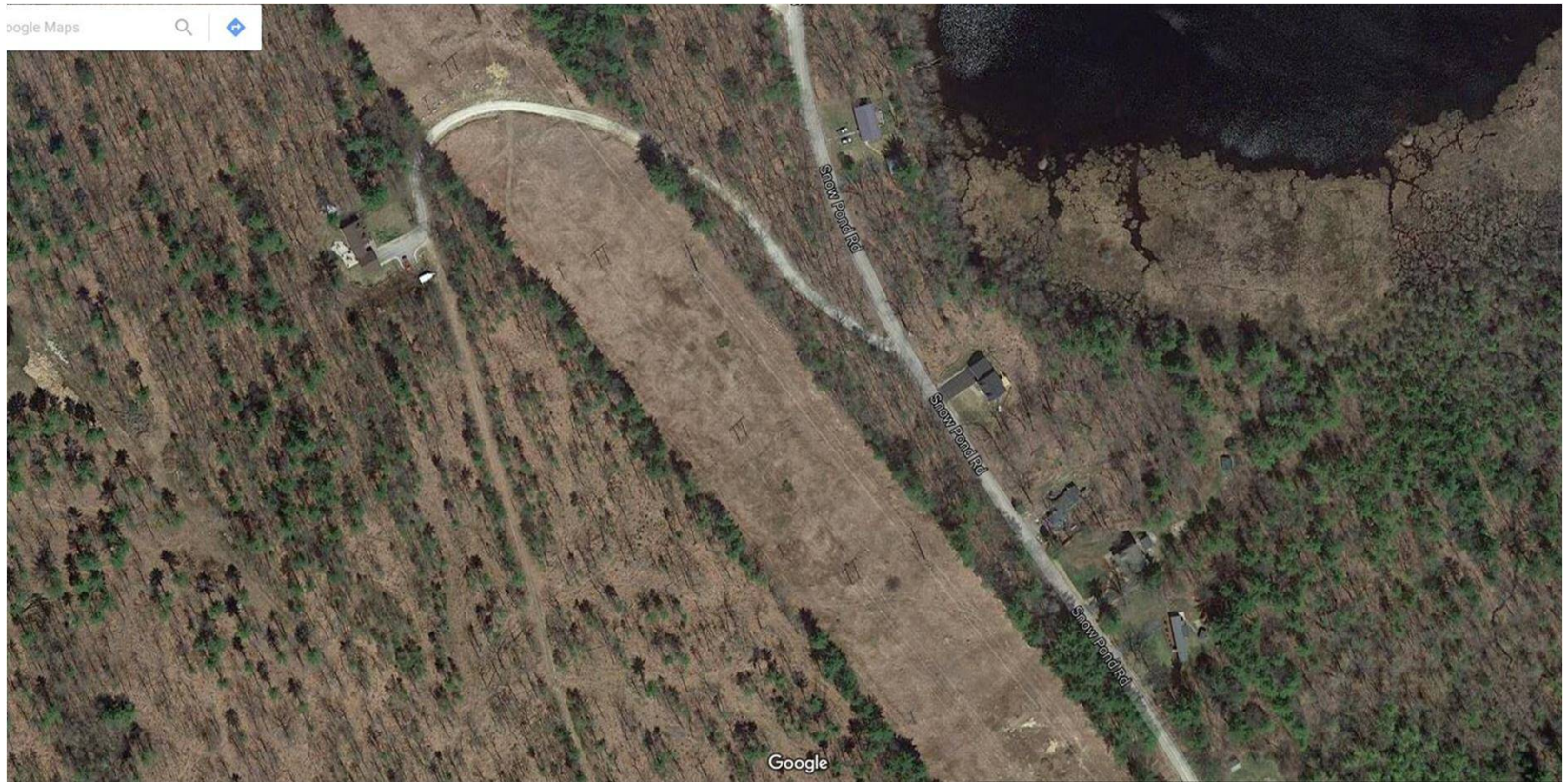


Photo 33 - Snow Pond Road, Overhead (Google Earth)



Photo 34 - Oak Hill Road, Overhead (Google Earth)



Photo 35 -86 Oak Hill Road, Street View (Google Earth)



Photo 36 - Turtle Pond, Temporary Matting (9-27-16)



Photo 37 - Turtle Pond, Temporary Matting (9-27-16)



Photo 38 -Turtle Pond, Temporary Matting (9-27-16)



Photo 39 -Turtle Pond, Temporary Matting (9-27-16)



Photo 40- Appleton and Jennifer Drive, Overhead (Google Earth)



Photo 41 - Portsmouth Street, Overhead (Google Earth)



Photo 42 - Portsmouth Street, Overhead (Google Earth)



Photo 43 - 253 Portsmouth Street, Street View (Google Earth)



Photo 44 – 254 Portsmouth Street, Street View (Google Earth)



Photo 45 - Alton Woods, Overhead (Google Earth)



Photo 46 - Alton Woods, Street View (Google Earth)



Photo 47 - Alton Woods, Street View (Google Earth)



Photo 48 - Alton Woods, Street View (Google Earth)



Photo 49 - Alton Woods, Street View (9-27-16)



Photo 50 - Alton Woods, Street View (9-27-16)



Photo 51 -5 & 7 Old Loudon Road, Overhead (Google Earth)



Photo 52 - 5 & 7 Old Loudon Road, Street View (Google Earth)



Photo 53 - 5 & 7 Old Loudon Road, Street View (Google Earth)



Photo 54 - McKenna's Purchase, Overhead (Google Earth)



Photo 55 - McKenna's Purchase, Overhead (Google Earth)

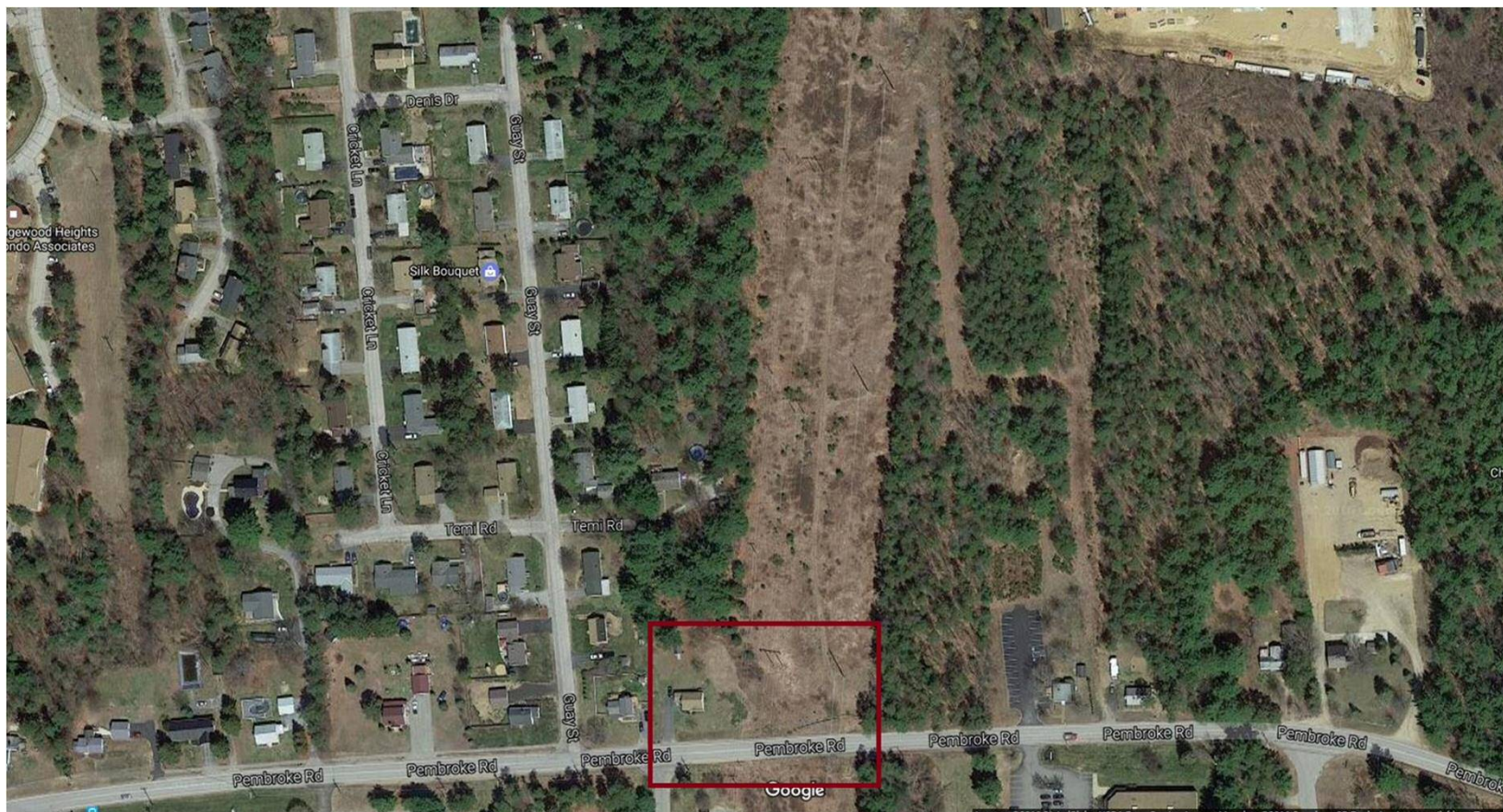


Photo 56 - Guay Street and Pembroke Road, Overhead (Google Earth)



Photo 57 - 249 Pembroke Road, Street View (Google Earth)