

- Legend**
- Viewpoint
 - Existing PSNH ROW
 - Proposed Alternative 7 Burial
 - Freeway
 - Major Road
 - Secondary Road
 - Hiking Trails
 - Mountain Peaks/Natural Features
 - Alternative 7 Structure

Figure 1
Viewpoint Location Map
Northern Pass Transmission Line Project
Environmental Impact Statement

SOURCE: ESRI 2011; GRANIT 2012; Burns and McDonnell 2013; USFS 2012; Ecology and Environment 2013, DeLorme Data, T.J. Boyle Associates

0 0.25 0.5 Miles

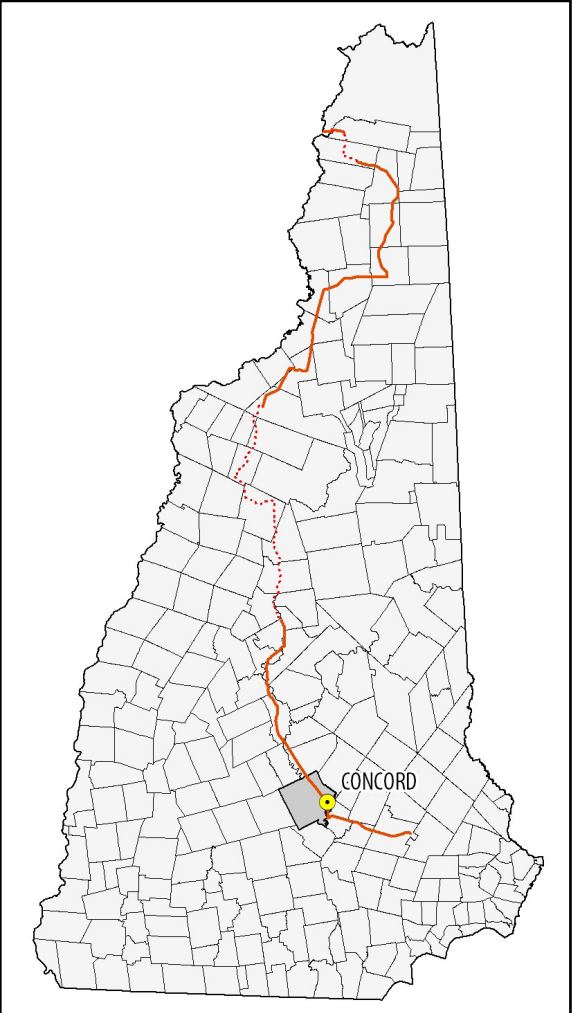


Figure 2 - Viewpoint Location

SCALE
0 20 40 60 Miles

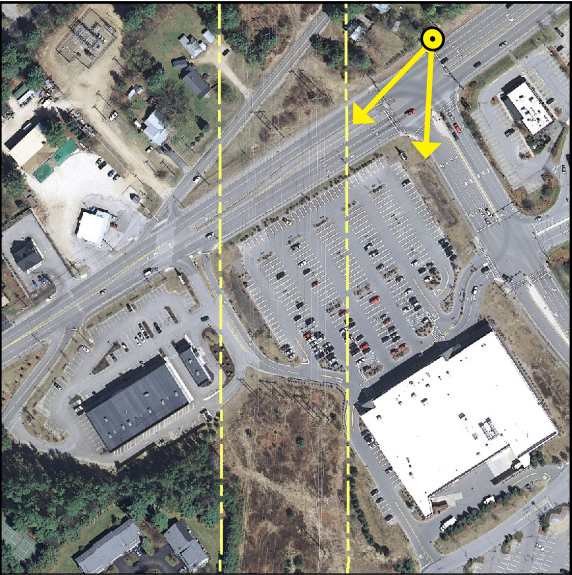


Figure 3 - Aerial Context

SCALE
0 200 400 600 Feet



General Information

Base Photograph

Date: 11-14-2013
Time: 10:06 am
Meteorological Visibility:
Concord Airport - 10 miles
Image Size: 4,928 x 3,264 pixels

Camera Properties

Camera Make/Model: Nikon D7000
Sensor Dimensions: 23.6 mm x 15.6 mm
Lens Make/Model: Nikkor DX AF-S 35 mm
Lens Focal Length: 35 mm
35 mm Equivalent Focal Length: 52.5 mm
Approximate Angles of View:
37° wide and 25° high
Camera Height: 1.5 meters (5 feet)

Viewpoint Information

Location: Loudon Road/NH Route 9, Concord
Latitude/Longitude: 43.224149°, -71.490034°
Viewpoint Elevation: 346 feet
Viewpoint Name: Loudon Road
Orientation: Looking South
Looking toward Mile Marker: 173

Simulation Viewing Notes

The simulation is properly printed on an 11-by-17 inches sheet at actual size. The simulated image is at the proper perspective when viewed at 23.5 inches from the eye, or at a distance of approximately twice the image height.

If viewed on a computer monitor, use the highest screen resolution.

Project Design

The simulations are based on the best information available in October 2015.







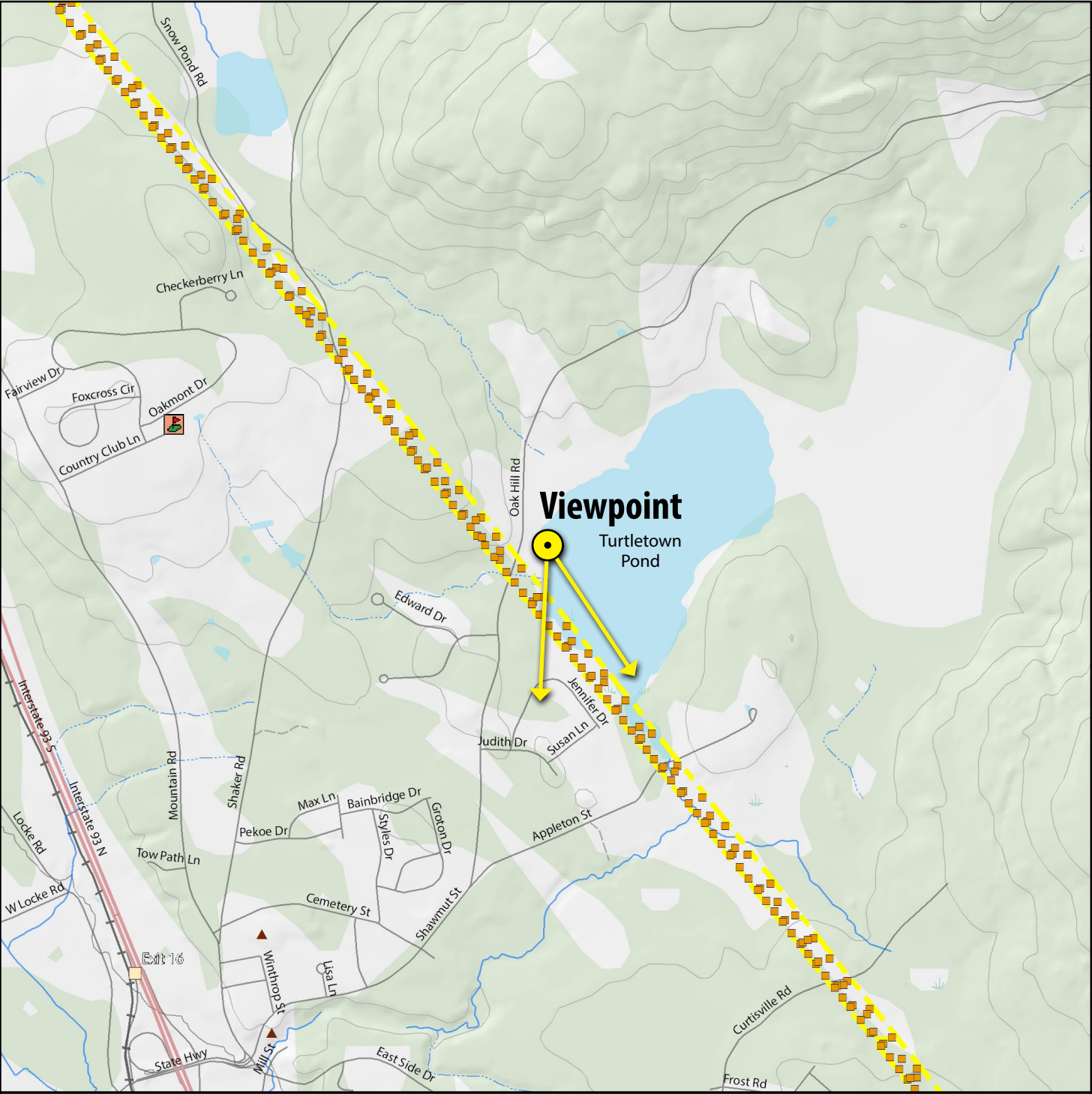


Figure 1
Viewpoint Location Map
Northern Pass Transmission Line Project
Environmental Impact Statement

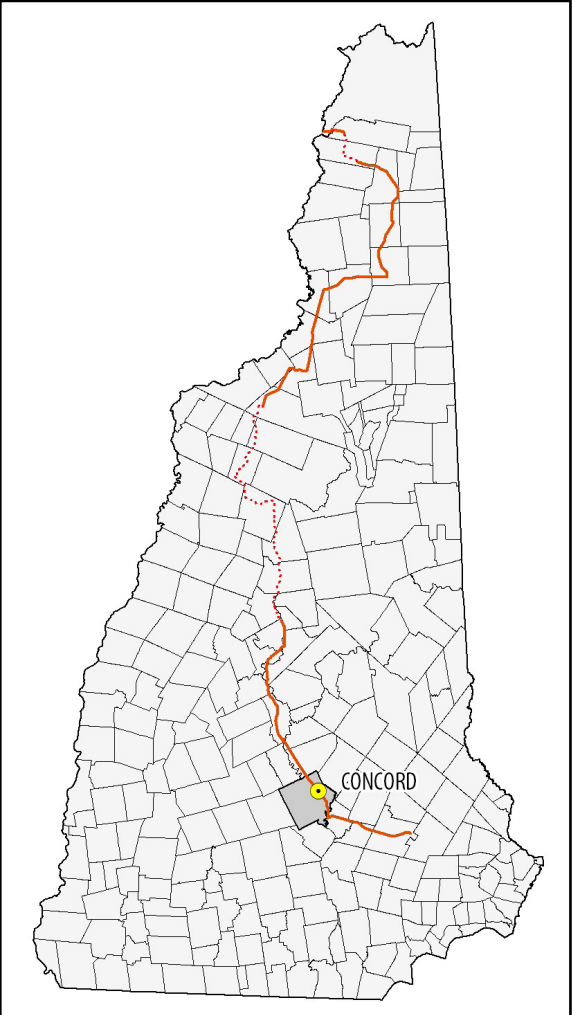


Figure 2 - Viewpoint Location

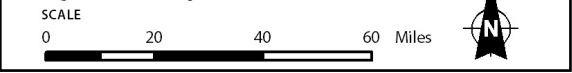
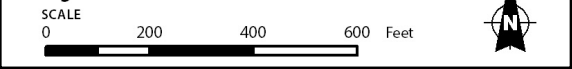


Figure 3 - Aerial Context



General Information

Base Photograph

Date: 04-25-2013
Time: 10:35 am
Meteorological Visibility:
Concord Airport - 10 miles
Image Size: 4,928 x 3,264 pixels

Camera Properties

Camera Make/Model: Nikon D7000
Sensor Dimensions: 23.6 mm x 15.6 mm
Lens Make/Model: Nikkor DX AF-S 35 mm
Lens Focal Length: 35 mm
35 mm Equivalent Focal Length: 52.5 mm
Approximate Angles of View:
37° wide and 25° high
Camera Height: 1.5 meters (5 feet)

Viewpoint Information

Location: Turtletown Pond, Concord
Latitude/Longitude: 43.225112°, -71.521308°
Viewpoint Elevation: 321 feet
Viewpoint Name: Turtletown Pond
Orientation: Looking South
Looking toward Mile Marker: 171

Simulation Viewing Notes

The simulation is properly printed on an 11-by-17 inches sheet at actual size. The simulated image is at the proper perspective when viewed at 23.5 inches from the eye, or at a distance of approximately twice the image height.

If viewed on a computer monitor, use the highest screen resolution.

Project Design

The simulations are based on the best information available in October 2015.





