

APPENDIX G:

Analysis to Reduce the Number of Potential Scenic Resources

ANALYSIS TO REDUCE THE NUMBER OF POTENTIAL SCENIC RESOURCES

April 6, 2017

Introduction

T. J. Boyle provided an analysis of potential scenic resources that identified more than 18,000 scenic resources, as summarized in Table 6 of the NPT VIA Review. This analysis was based on available databases and presents the direct resulting data, with no attempts to further refine the data. As a result, there are many potential resources that may be construed as including “duplications,” as defined below. We have reviewed the List of Potential Scenic Resources in Appendix D of the NPT VIA Review for duplications, as described below.

Identifying “Duplications”

There are several forms of “duplication” that occurred in Appendix D as summarized in Table 6 of the NPT VIA Review.

1. Appendix D and Table 6 are organized by town. If a scenic resource, such as a state park, occurs in two towns then it was counted twice.
2. Each segment of a linear feature with potential visibility was listed as a separate scenic resource. For instance, two stretches of a scenic road several miles apart were each listed as a separate scenic resource.
3. A scenic resource may have several separately mapped parcels, and each one with potential visibility was listed separately.
4. Within a single category of scenic resource identified in the SEC rules, a location may be listed in two databases that have different kinds of geometry. For instance, public waters with a scenic quality are scenic resources (Site 102.45(c)); a lake in the polygon database overlaps with a river in the line database that runs through it. If there is potential visibility where the lake and river overlap, they were each listed.
5. There may be overlap between databases that are used to describe a scenic resource type. For instance, the historic resources identified by Preservation Company are limited to the area within 1 mile of the NPT. Some of these historic resources are listed in the National Register of Historic Places database, which extends to the full area of potential visual impact.
6. A scenic resource of one category can include a sub-component of another scenic resource category. For instance, Little Diamond Pond (Site 201.45(c)) is within Coleman State Park (Site 102.45(d)), Deerfield Center Historic District (Site 102.45(e)) is within Deerfield Town Center (Site 102.45(f)), and Bear Brook State Park Civilian Conservation Corps Camp Historic District (Site 102.45(e)) is within Bear Brook State Park (Site 102.45(d)).
7. A single scenic resource may meet the criteria for more than one category of scenic resource, as defined by Site 102.45. For instance, all scenic roads (Site 102.45(a)) are also public roads (Site 102.45(c and d)).

T. J. Boyle created a list of scenic resources with potential visibility that attempts to remove duplication that occurs because of the first five reasons. The results are organized by the category of scenic resources identified in Site 102.45, which preserves the last two kinds of apparent duplication. The procedures used to remove duplication are applied within each category of scenic resource identified in Site 102.45(a) through

(f). The first step is to select features with terrain visibility. Within a specific category of scenic resources, features with the same name were combined into a single feature. In some instances, portions of a dataset were erased where they were covered by another dataset within the same category. We applied this method to the datasets for Scenic Byways, Designated Rivers, Conservation/Public Lands, Great Ponds, Public Rivers, Public Roads, Access to Public Waters, Recreation Inventory–Points and Polygons, Recreational Trails, Listed Historic Resources–Points and Polygons, Potential Historic Resources, and Community Center Areas.

This analysis does not incorporate Community Identified Resources (CIRs). However, this should not be interpreted as an indication that CIRs are somehow less important than scenic resources identified by other means. T. J. Boyle believes that the CIR process is a valuable complement to the use of existing spatial datasets. The reason that CIRs are not incorporated is that the approach taken to reduce apparent “duplication” of scenic resources is unsuitable for use with the CIR database. The process depends on the use of a standard formal name for the scenic resource, and the CIRs appear to often use a descriptive informal name.

List of Scenic Resources

Table 1 below reports the number of separate scenic resources by type and database. The results of the analysis to identify and reduce duplicate scenic resources within 10 miles of the NPT that have potential visibility based on bare ground conditions are presented in Table 2, at the end of this report. This analysis was designed to remove duplication within a resource type, but not between resource types.

Table 1. Number of Identified Scenic Resources by Category and Type

Category and Type of Scenic Resource	Number Identified
Site 102.45(a): Designated Scenic Resources	19
Scenic Byways	11
Designated Rivers	8
Site 102.45(b): Conservation Lands or Easements	783
Conservation/Public Lands	783
Site 102.45(c) Part 1: Lakes, Ponds and Rivers	578
Great Ponds	153
Public Rivers	425
Site 102.45(c) Part 2: Scenic Drives	3,947
Public Roads	3,947
Site 102.45(d) Part 1: Parks and Other Recreation Areas	494
Access Sites to Public Waters	78
Recreation Inventory: Points	235
Recreation Inventory: Polygon	181
Site 102.45(d) Part 2: Recreation Trails	195
Recreational Trails	195
Site 102.45(e): Historic Sites	1,359
Listed Historic Resource: Polygons	27
Listed Historic Resource: Points	42
Potential Historic Resources	1,290
Site 102.45(f): Town and Village Centers	42
Community Center Areas	42
TOTAL	7,417 *

* These results are subject to the limitations described below.

Limitations of these Results

These results provide a preliminary identification of scenic resources by category, as identified in Site 102.45. This is not a comprehensive list for the following reasons.

1. These procedures do not recognize that a scenic resource may have several, easily recognized distinct parts that may be considered as individual scenic resources and would be evaluated separately for potential visual impacts in a typical VIA. For instance, the Presidential Range Tour includes 66 miles of scenic byway and is crossed four times by the NPT; the average distance between crossings is 7.7 miles. The most significant effect of removing “duplication” is that all roads and rivers have been reduced to a single resource, regardless of length and distance between potential exposures to the Project.

The effect of this limitation is to reduce the number of identified scenic resources with potential visibility, since it does not recognize the possibility of easily recognized, distinct scenic resources that share a single name.

2. These procedures result in the elimination of potentially visible scenic resources that are not explicitly named within the data source, since it is not possible to determine whether they are distinct from another scenic resource. For instance, a conservation area may be composed of several adjacent parcels, only one of which is named. Similarly, a trail may be composed of several segments, only one of which is named. If the visible portion of a scenic resource is unnamed, then it will not be identified in the above analysis. No attempt is made to identify unnamed scenic resources.

The effect of this limitation is to reduce the number of identified scenic resources with potential visibility, since the potential visibility may be to only an unnamed portion of a scenic resource. Alternatively, if it is a separate resource, it is not being identified because no name is listed.

3. The results of this analysis do not include all scenic resources within 10 miles of the NPT with potential visibility. In particular, the analysis does not include:

- ☐ All historic sites within 10 miles of the NPT (Site 102.45(e)).
- ☐ Lands receiving a 20 percent reduction in their current use tax assessment in return for year-round public recreation use (Site 102.45(d)).
- ☐ Tourist destinations identified in the *New Hampshire Visitor's Guide*, which is published by NH Department of Resources and Economic Development, Division of Travel and Tourism Development (Site 102.45(c)).

The effect of this limitation is to reduce the number of identified scenic resources with potential visibility. It is probable that there are many historic resources, properties with the recreation current use assessment, and recognized tourist destinations that have potential visibility of the NPT.

4. While the analysis is designed to remove duplication within a scenic resource category, a scenic resource may be listed in more than one category, as described by the kinds of duplication in numbers 6 and 7 above.

The effect of this limitation is to increase the apparent total number of scenic resources with potential visibility; it does not affect the number of resources identified within a scenic resource category.

5. The analysis assumes that the scenic resources all have different names and that they are named accurately in the databases. As a result, two different scenic resources with potential visibility and with the same name will be listed only once. Conversely, parts of a single resource with potential visibility that have different names will each be listed.

The effect of this limitation is unknown, since it could increase or decrease the number of scenic resources identified. However, this limitation does not appear to be common.

Conclusions

T. J. Boyle originally prepared the analysis of potential scenic resources to demonstrate that the 282 scenic resources identified in the NPT VIA greatly understated the number of scenic resources with potential visibility of the Project, as required by the SEC Rules. This analysis provides further refinement of potential scenic resources, but still strongly supports the finding that the NPT VIA fails to adequately identify scenic resources per Site 301.05(b)(5).

Table 2. LIST OF SCENIC RESOURCES BY CATEGORY AND TYPE

Site 102.45(a): Designated Scenic Resources

Name	Type of Scenic Resource
Canterbury Shaker Village Byway	Scenic Byways
Connecticut River Scenic Byway	Scenic Byways
Currier and Ives Trail	Scenic Byways
General John Stark Scenic Byway	Scenic Byways
Jackson Loop	Scenic Byways
Lakes Region Tour	Scenic Byways
Moose Path Trail	Scenic Byways
Presidential Range Tour	Scenic Byways
River Heritage Tour	Scenic Byways
Upper Lamprey River Scenic Byway	Scenic Byways
Woodland Heritage Trail	Scenic Byways
Ammonoosuc River	Designated Rivers
Connecticut River	Designated Rivers
Contoocook River	Designated Rivers
Lamprey River	Designated Rivers
Merrimack River	Designated Rivers
North Branch River	Designated Rivers
North River	Designated Rivers
Pemigewasset River	Designated Rivers

Site 102.45(b): Conservation Lands or Easements

Name	Type of Scenic Resource
13 Mile Woods	Conservation/Public Lands
13 Mile Woods Community Forest	Conservation/Public Lands
Abbott State Forest	Conservation/Public Lands
Abe Emerson Marsh	Conservation/Public Lands

Ackerman	Conservation/Public Lands
Aggregate	Conservation/Public Lands
Agnew State Forest	Conservation/Public Lands
Airport Bluff + Floodplain	Conservation/Public Lands
Akers Pond Lot	Conservation/Public Lands
Alfred Jenness Natural Area	Conservation/Public Lands
Allenstown Town Forest	Conservation/Public Lands
Alvah Chase Town Forest	Conservation/Public Lands
Ames Brook Easement	Conservation/Public Lands
Amey, D.	Conservation/Public Lands
Amey, J.	Conservation/Public Lands
Ammonoosuc River State Forest	Conservation/Public Lands
Anderson	Conservation/Public Lands
Arch Park	Conservation/Public Lands
Arthur Chase Town Forest	Conservation/Public Lands
Aspnes Easement	Conservation/Public Lands
Avery Lot / Cook Lot - Rumney Town Forest	Conservation/Public Lands
Ayers State Forest	Conservation/Public Lands
Bachelder	Conservation/Public Lands
Bag Hill Town Forest	Conservation/Public Lands
Bailey Tract	Conservation/Public Lands
Bald Ledge Scenic Vista	Conservation/Public Lands
Barclin LLC	Conservation/Public Lands
Bartow & Baker, J. & Baker, L.	Conservation/Public Lands
Beale (Lower)	Conservation/Public Lands
Beale (Upper)	Conservation/Public Lands
Beale Lot	Conservation/Public Lands
Bean	Conservation/Public Lands
Bear Brook State Park	Conservation/Public Lands
Bear Mountain	Conservation/Public Lands
Beaver Meadow - Undeveloped Area	Conservation/Public Lands
Beck	Conservation/Public Lands

Bela Brook - Aranosian	Conservation/Public Lands
Bela Brook - Previte	Conservation/Public Lands
Bela Brook Conservation Area	Conservation/Public Lands
Benjamin Shaw Lot	Conservation/Public Lands
Bernhard + Mayman	Conservation/Public Lands
Bethlehem02-1856	Conservation/Public Lands
Birchdale/Clinton St. Area	Conservation/Public Lands
Blackman, G.	Conservation/Public Lands
Blackman, G. & M.	Conservation/Public Lands
Blackmer	Conservation/Public Lands
Blackwater Flood Control Reservoir	Conservation/Public Lands
Blaisdell	Conservation/Public Lands
Blood - Agric. Pres. Rest.	Conservation/Public Lands
Blye Farm Open Space	Conservation/Public Lands
Bock Easement	Conservation/Public Lands
Bofinger Conservation Area and BAA	Conservation/Public Lands
Bohanan East	Conservation/Public Lands
Bohanan West	Conservation/Public Lands
Bois de Brodeur Trust	Conservation/Public Lands
Boodey	Conservation/Public Lands
Booth	Conservation/Public Lands
Boscawen Town Forest	Conservation/Public Lands
Boscawen Town Lot	Conservation/Public Lands
Boscawen Town Park	Conservation/Public Lands
Bow Brook Property	Conservation/Public Lands
Bow School Forest	Conservation/Public Lands
Bow Town Forest - Lot 2-122	Conservation/Public Lands
Bow Town Forest - Lot 2-83	Conservation/Public Lands
Bow Town Forest - Lot 2-97	Conservation/Public Lands
Bow Town Forest - Lot 3-138	Conservation/Public Lands
Bow Town Forest - Lot 3-63	Conservation/Public Lands
Bow Town Forest - Lot 4-26+27	Conservation/Public Lands

Bow Town Forest - Lot 4-56	Conservation/Public Lands
Bow Town Forest - Lot 5-64	Conservation/Public Lands
Bow Town Forest - Turnpike Lots	Conservation/Public Lands
Bow Town Forest - Walker Forest	Conservation/Public Lands
Bow03-0583	Conservation/Public Lands
Bow99-628	Conservation/Public Lands
Boyer	Conservation/Public Lands
Bradley	Conservation/Public Lands
Brennick Lochmere Archaeological Site	Conservation/Public Lands
Bretzfelder Memorial Park	Conservation/Public Lands
Bridge Park	Conservation/Public Lands
Brill	Conservation/Public Lands
Bristol Water Source	Conservation/Public Lands
Brittany	Conservation/Public Lands
Broad Cove Forest	Conservation/Public Lands
Bronnenberg Easement	Conservation/Public Lands
Brookwood Open Space	Conservation/Public Lands
Brown	Conservation/Public Lands
Brown / Robinson	Conservation/Public Lands
Brown WMA - Tract I	Conservation/Public Lands
Brown WMA - Tract II	Conservation/Public Lands
Brundage Forest	Conservation/Public Lands
Bunnell Working Forest	Conservation/Public Lands
Burbank Property Conservation Easement	Conservation/Public Lands
Burbank, H.	Conservation/Public Lands
Burbank, J. & H.	Conservation/Public Lands
Burleigh	Conservation/Public Lands
Burroughs/McGraw Easement	Conservation/Public Lands
Cabot	Conservation/Public Lands
Cabot (Taylor Lot) / Niebling	Conservation/Public Lands
Cabot Memorial Forest	Conservation/Public Lands
Cabot/Holt Pond	Conservation/Public Lands

Cambridge Drive Parcel	Conservation/Public Lands
Cammet Recreation Area	Conservation/Public Lands
Campen, E. & E.	Conservation/Public Lands
Cape Horn State Forest	Conservation/Public Lands
Capital Region Health Care Corp.	Conservation/Public Lands
Cardigan	Conservation/Public Lands
Cardigan Mountain State Forest	Conservation/Public Lands
Carlson Easement	Conservation/Public Lands
Carpenter Memorial Park	Conservation/Public Lands
Carriage Hill Open Space 1	Conservation/Public Lands
Carriage Hill Open Space 2	Conservation/Public Lands
Carriage Hill Open Space 3	Conservation/Public Lands
Carson	Conservation/Public Lands
Cate	Conservation/Public Lands
Catterall	Conservation/Public Lands
Catterall Forest	Conservation/Public Lands
Celmer	Conservation/Public Lands
Chandler	Conservation/Public Lands
Charles L. Bean Sanctuary	Conservation/Public Lands
Chase Easement	Conservation/Public Lands
Chemung State Forest	Conservation/Public Lands
Chocorua Village Open Space	Conservation/Public Lands
Christie	Conservation/Public Lands
Christie Easement	Conservation/Public Lands
Church Hill WMA	Conservation/Public Lands
Cilley State Forest	Conservation/Public Lands
City of Concord - Freese Property	Conservation/Public Lands
City of Concord Land	Conservation/Public Lands
City of Franklin Land	Conservation/Public Lands
City Pound	Conservation/Public Lands
Claremont + Concord RR Bed	Conservation/Public Lands
Claridge	Conservation/Public Lands

Clark	Conservation/Public Lands
Clark Lot	Conservation/Public Lands
Clarke I (Farmland)	Conservation/Public Lands
Clarksville Pond Boat Access	Conservation/Public Lands
Clay Pond Easement	Conservation/Public Lands
Clifford Easement I	Conservation/Public Lands
Clifford Easement II	Conservation/Public Lands
Clifford Easement III	Conservation/Public Lands
Cline	Conservation/Public Lands
Closs	Conservation/Public Lands
Coats CE	Conservation/Public Lands
Cockermouth Forest	Conservation/Public Lands
Coe-Brown Academy Forestry Lots	Conservation/Public Lands
Colebrook Town Woodlot	Conservation/Public Lands
Colebrook04-3007	Conservation/Public Lands
Coleman State Park	Conservation/Public Lands
Colonel Town Community Camp	Conservation/Public Lands
Common Land	Conservation/Public Lands
Compensation Funds of NH	Conservation/Public Lands
Comte Easement	Conservation/Public Lands
Concord Wellfield	Conservation/Public Lands
Concord02-1021	Conservation/Public Lands
Conkling	Conservation/Public Lands
Connecticut Lakes Headwaters	Conservation/Public Lands
Connecticut Lakes WMA South	Conservation/Public Lands
Connors,G&M	Conservation/Public Lands
Conservation Center	Conservation/Public Lands
Conservation Restriction Area 1	Conservation/Public Lands
Conservation Restriction Area 2	Conservation/Public Lands
Contoocook Island Park	Conservation/Public Lands
Coos County Farm	Conservation/Public Lands
Copperville Forest	Conservation/Public Lands

Corey Tract	Conservation/Public Lands
Corey WMA Access	Conservation/Public Lands
Cotton Mountain	Conservation/Public Lands
Courser 3	Conservation/Public Lands
Cranmore Ridge Open Space	Conservation/Public Lands
Cumings Easement	Conservation/Public Lands
Cummings	Conservation/Public Lands
Curry	Conservation/Public Lands
Curtis	Conservation/Public Lands
Damiani Tract	Conservation/Public Lands
Dana Easement	Conservation/Public Lands
Dana Forest	Conservation/Public Lands
Daniel Webster Birthplace Historic Site	Conservation/Public Lands
Davis Estate, Harold	Conservation/Public Lands
Dearborn Estate	Conservation/Public Lands
Deer Park	Conservation/Public Lands
DeJeager	Conservation/Public Lands
Dell's Park	Conservation/Public Lands
Dennoncour	Conservation/Public Lands
deRham Addition	Conservation/Public Lands
Deslaurier Lot - Town Forest	Conservation/Public Lands
Devil's Slide Tract	Conservation/Public Lands
Devils Slide State Forest	Conservation/Public Lands
Devries	Conservation/Public Lands
Dexter1	Conservation/Public Lands
DiCuollo	Conservation/Public Lands
Dimond Hill	Conservation/Public Lands
District #5 State Forest	Conservation/Public Lands
Dixville Notch State Park	Conservation/Public Lands
Doane / Schorr Easement	Conservation/Public Lands
Dockham Town Forest	Conservation/Public Lands
Doherty	Conservation/Public Lands

Doles Marsh WMA	Conservation/Public Lands
Dorothy Walker Parcel	Conservation/Public Lands
Dotter Easement	Conservation/Public Lands
Dowst - Cate Town Forest	Conservation/Public Lands
Drake / Laro	Conservation/Public Lands
Drew	Conservation/Public Lands
Drinon	Conservation/Public Lands
Dunbarton Town Forest	Conservation/Public Lands
Dunbarton Town Forest - Winslow Lot	Conservation/Public Lands
Dunbarton03-193	Conservation/Public Lands
Duris Tract	Conservation/Public Lands
Dustin Baker Town Forest	Conservation/Public Lands
Earle, E.	Conservation/Public Lands
Easement Lot #1	Conservation/Public Lands
Egan Property	Conservation/Public Lands
Emmons	Conservation/Public Lands
Epsom Town Forest	Conservation/Public Lands
Errol School Lot	Conservation/Public Lands
Estes Forest	Conservation/Public Lands
Evans Mountain Easement	Conservation/Public Lands
Evans Mountain Forest	Conservation/Public Lands
Farrar Tract	Conservation/Public Lands
Ferman - East of Driveway	Conservation/Public Lands
Ferman - West of Driveway	Conservation/Public Lands
Fernald et al	Conservation/Public Lands
Fife Trust #1/Fife, D&S	Conservation/Public Lands
Fife Trust#2, Clarence C.	Conservation/Public Lands
Five Hill Estates Open Space	Conservation/Public Lands
Flag Hole Marsh	Conservation/Public Lands
Flagg Lot	Conservation/Public Lands
Floodway Area - Hall St. W.W.T.P.	Conservation/Public Lands
Fogg / Shores Memorial Forest	Conservation/Public Lands

Fokas, et al.	Conservation/Public Lands
Forest Lake State Park	Conservation/Public Lands
Forest Legacy Tract	Conservation/Public Lands
Forest Peters WMA	Conservation/Public Lands
Former Ackley Tract	Conservation/Public Lands
Former Sweet Tract	Conservation/Public Lands
Fort Hill WMA	Conservation/Public Lands
Fort Hill WMA - Lamoureux Lots	Conservation/Public Lands
Foss Easement	Conservation/Public Lands
Fournier	Conservation/Public Lands
Fowler Conservation Area #1	Conservation/Public Lands
Fowler Conservation Area #2	Conservation/Public Lands
Fowler Conservation Area #3	Conservation/Public Lands
Fowler Conservation Area #4	Conservation/Public Lands
Fox Meadow Drive Open Space	Conservation/Public Lands
Frances Austin Eames Recreation And	Conservation/Public Lands
Franconia Notch State Park	Conservation/Public Lands
Franklin Falls Reservoir	Conservation/Public Lands
Franklin Wellfield	Conservation/Public Lands
Freeman I	Conservation/Public Lands
Freese's Pond	Conservation/Public Lands
Freese Town Forest	Conservation/Public Lands
Frizzell	Conservation/Public Lands
Gallup	Conservation/Public Lands
Geddes Trust, Melinda L	Conservation/Public Lands
General Bartlett Memorial Forest	Conservation/Public Lands
Georgaklis (A)/Goldstar Tree and Turf Farm	Conservation/Public Lands
Georgaklis (B)/Town of Canterbury	Conservation/Public Lands
George	Conservation/Public Lands
George Duncan State Forest	Conservation/Public Lands
Giles	Conservation/Public Lands
Giles Lot - Town Forest	Conservation/Public Lands

Glidden Forest	Conservation/Public Lands
Glory Hill	Conservation/Public Lands
Gold Star Sod Farms, Inc	Conservation/Public Lands
Goodwill	Conservation/Public Lands
Govenor's Woods	Conservation/Public Lands
Grady Tract	Conservation/Public Lands
Granger/Little River Park	Conservation/Public Lands
Graves Easement	Conservation/Public Lands
Gray WMA	Conservation/Public Lands
Greason	Conservation/Public Lands
Great Gains Memorial Forest	Conservation/Public Lands
Green	Conservation/Public Lands
Green Acres Woodlands	Conservation/Public Lands
Groveton Water System Easement	Conservation/Public Lands
Grumbling Easement	Conservation/Public Lands
Gunn	Conservation/Public Lands
Guptill-Lamprey Pastures Lot	Conservation/Public Lands
Hale	Conservation/Public Lands
Hallinan	Conservation/Public Lands
Hannah	Conservation/Public Lands
Hannah Dustin Historic Site	Conservation/Public Lands
Hannah Moore Lot	Conservation/Public Lands
Hardy #2 Easement	Conservation/Public Lands
Hardy C. & J. #1	Conservation/Public Lands
Harkness Easement	Conservation/Public Lands
Hart Town Forest	Conservation/Public Lands
Hartley	Conservation/Public Lands
Hatch	Conservation/Public Lands
Hebron, Town of	Conservation/Public Lands
Hedgehog Brook WMA	Conservation/Public Lands
Henderson Holdings/Sunset Hill Golf Course	Conservation/Public Lands
Henry	Conservation/Public Lands

Hermit Woods Town Forest	Conservation/Public Lands
Hersey Family Farm 1 (farmland)	Conservation/Public Lands
Hersey Family Farm 2 (forestland)	Conservation/Public Lands
Hickey Easement	Conservation/Public Lands
Hildreth's Field	Conservation/Public Lands
Hildreth - Agric. Pres. Rest.	Conservation/Public Lands
Hiller Trust	Conservation/Public Lands
Hillman Farm	Conservation/Public Lands
Hirst WMA	Conservation/Public Lands
Hitchcock Clinic	Conservation/Public Lands
Hofman #1	Conservation/Public Lands
Hofman #2	Conservation/Public Lands
Hoit Road Marsh WMA	Conservation/Public Lands
Holderness Town Forest	Conservation/Public Lands
Holderness95-863	Conservation/Public Lands
Hooksett Turnpike Area	Conservation/Public Lands
Hooksett00-203	Conservation/Public Lands
Hopkinton-Everett Flood Control Reservoir	Conservation/Public Lands
Horne Brook WMA	Conservation/Public Lands
Hot Hole Pond Boating Access	Conservation/Public Lands
Hough	Conservation/Public Lands
Humphreys Family H. Everett	Conservation/Public Lands
Huntoon Tract	Conservation/Public Lands
Hurlburt Swamp	Conservation/Public Lands
Hurlburt Swamp Preserve	Conservation/Public Lands
Huston - Morgan State Forest	Conservation/Public Lands
Hyland Property	Conservation/Public Lands
Ilacqua	Conservation/Public Lands
Island Shore Estates Open Space	Conservation/Public Lands
J. Tyson Stokes Memorial Forest	Conservation/Public Lands
Jaeger	Conservation/Public Lands
Jahoda Conservation Easement	Conservation/Public Lands

Janeway #3	Conservation/Public Lands
Jenkins	Conservation/Public Lands
Jericho Mountain State Park	Conservation/Public Lands
Jillette	Conservation/Public Lands
Johns Easement	Conservation/Public Lands
Johnson Trust, Marilyn	Conservation/Public Lands
Johnson/Tillotson	Conservation/Public Lands
Jones	Conservation/Public Lands
Karner Blue Natl. Wildlife Refuge - Area A	Conservation/Public Lands
Karner Blue Natl. Wildlife Refuge - Area B	Conservation/Public Lands
Katharyn Williams Easement	Conservation/Public Lands
Kauffmann #1	Conservation/Public Lands
Kauffmann #2	Conservation/Public Lands
Kauffmann Tract	Conservation/Public Lands
Kauffmann/Frizzell	Conservation/Public Lands
Kauffmann/Gaudette	Conservation/Public Lands
Kearsarge WMA	Conservation/Public Lands
Kelley Island	Conservation/Public Lands
Keniston	Conservation/Public Lands
Kepper John C. Revocable Trust	Conservation/Public Lands
Ketcham	Conservation/Public Lands
Kevin Prince	Conservation/Public Lands
Kilburn Crag	Conservation/Public Lands
Kilburn Ledge / Staples	Conservation/Public Lands
Kimball Pond Conservation Area	Conservation/Public Lands
Kimball, F. & D.	Conservation/Public Lands
Kimball, R.	Conservation/Public Lands
Kinter Property	Conservation/Public Lands
Knight Park	Conservation/Public Lands
Knowles Pond Conservation Area	Conservation/Public Lands
Knox Mt. Tree Farm	Conservation/Public Lands
Kronk Tract	Conservation/Public Lands

Ladd Property	Conservation/Public Lands
Ladd Tract	Conservation/Public Lands
Lake Francis State Park	Conservation/Public Lands
Lake Umbagog National Wildlife Refuge	Conservation/Public Lands
Lalish Lot	Conservation/Public Lands
Lamontagne WMA	Conservation/Public Lands
Lamphere Tract	Conservation/Public Lands
Lancaster Town Forest	Conservation/Public Lands
Lancaster Water Supply	Conservation/Public Lands
Land Behind Chichester Central School	Conservation/Public Lands
Landfill Floodplain	Conservation/Public Lands
Lang	Conservation/Public Lands
Lang Meadow CE	Conservation/Public Lands
Laurel Road Conservation Restriction	Conservation/Public Lands
Lebo Easement	Conservation/Public Lands
Ledgewood Conservation Area	Conservation/Public Lands
Lee Town Forest Complex CE	Conservation/Public Lands
Lehtinen Park	Conservation/Public Lands
Leighton Town Forest	Conservation/Public Lands
Lester + Edith Youst Cons. Area	Conservation/Public Lands
Levesque Lot	Conservation/Public Lands
Lewis Builders, Inc.	Conservation/Public Lands
Lillian Cassier Memorial Forest Easement	Conservation/Public Lands
Lime Pond CE	Conservation/Public Lands
Linden Conservation Area	Conservation/Public Lands
Lindsay-Flanders Conservation Area	Conservation/Public Lands
Littleton Water and Light Department	Conservation/Public Lands
Littleton02-01589	Conservation/Public Lands
Livingstone	Conservation/Public Lands
Locke Wetland	Conservation/Public Lands
Long Mountain	Conservation/Public Lands
Lovell/Lottero	Conservation/Public Lands

Low Lot	Conservation/Public Lands
Main Street Fields	Conservation/Public Lands
Manchester-Portsmouth RR Bed	Conservation/Public Lands
Manchester Water Works Land	Conservation/Public Lands
Maplecroft Farm	Conservation/Public Lands
Marceau	Conservation/Public Lands
Marjorie Swope Park	Conservation/Public Lands
Martin Easement	Conservation/Public Lands
Mary + Quentin Hutchins Forest	Conservation/Public Lands
Mary McLane Property	Conservation/Public Lands
Mast Yard State Forest	Conservation/Public Lands
Mathey	Conservation/Public Lands
Mathey, Vaillant/Manley	Conservation/Public Lands
Maxfield Lot	Conservation/Public Lands
Mayhew Tract	Conservation/Public Lands
McCabe Lot - Town Forest	Conservation/Public Lands
McCarten, W. & S.	Conservation/Public Lands
McDonough Parcel	Conservation/Public Lands
McGarry Easement	Conservation/Public Lands
McGee Farm	Conservation/Public Lands
McLane-Cockermouth River	Conservation/Public Lands
McLaughlin/Faulkenham	Conservation/Public Lands
McNeil Conservation Area Town Forest	Conservation/Public Lands
Meader	Conservation/Public Lands
Meader #1	Conservation/Public Lands
Meader #2	Conservation/Public Lands
Meadowsend Sawmill Inc	Conservation/Public Lands
Meadowsend Timberlands Ltd #1	Conservation/Public Lands
Meadowsend Timberlands Ltd #3	Conservation/Public Lands
Meeh & McCullough	Conservation/Public Lands
Meeh, G. & T.	Conservation/Public Lands
Meeh, M.G. & T.	Conservation/Public Lands

Menard	Conservation/Public Lands
Menard Easement	Conservation/Public Lands
Merrill	Conservation/Public Lands
Merrill Park - Undeveloped Area	Conservation/Public Lands
Merrill, R.	Conservation/Public Lands
Merrimack County Farm	Conservation/Public Lands
Merrimack River Access	Conservation/Public Lands
Merrimack River Outdoor Ed. & Consv. Ctr.	Conservation/Public Lands
Merrimack River State Forest	Conservation/Public Lands
Merullo	Conservation/Public Lands
Metters	Conservation/Public Lands
Mike Burke Memorial Forest	Conservation/Public Lands
Milan Hill State Park	Conservation/Public Lands
Milan Town Forest	Conservation/Public Lands
Miller Lots - Boscawen Town Forest	Conservation/Public Lands
Mitigation Wetland	Conservation/Public Lands
Mohawk Div. of Silvio O Conte NFWR	Conservation/Public Lands
Mokler	Conservation/Public Lands
Morono Park	Conservation/Public Lands
Morrell	Conservation/Public Lands
Morrill Pond WMA	Conservation/Public Lands
Mount Kearsarge State Forest	Conservation/Public Lands
Mount Mui se Tract	Conservation/Public Lands
Mt Kelsey WMA	Conservation/Public Lands
Municipal Open Space	Conservation/Public Lands
Muriel Church #6	Conservation/Public Lands
Murphy Dam/Lake Francis	Conservation/Public Lands
Nadeau	Conservation/Public Lands
Nash Stream Forest	Conservation/Public Lands
Natale & Will Brown Forest	Conservation/Public Lands
Nathaniel Drive Open Space	Conservation/Public Lands
Natt W. Emerson Tract	Conservation/Public Lands

Nay Pond & Upper Ammonoosuc Tracts	Conservation/Public Lands
Ness	Conservation/Public Lands
New Boston Road Parcel	Conservation/Public Lands
New Hampton - Bridgewater Scenic Easement	Conservation/Public Lands
New Hampton Conservation Area	Conservation/Public Lands
New Hampton Fish Hatchery	Conservation/Public Lands
New Hampton Scenic Easement	Conservation/Public Lands
Newell Property	Conservation/Public Lands
Newfound Lake	Conservation/Public Lands
Newhall Easement	Conservation/Public Lands
Newman	Conservation/Public Lands
NH DOT Rte 2 Mitigation	Conservation/Public Lands
NHTI/Concord - Island Reserve	Conservation/Public Lands
Nichols Natural Area	Conservation/Public Lands
Norris Farms/Flint Hill	Conservation/Public Lands
North River Preserve	Conservation/Public Lands
North Road Parcel	Conservation/Public Lands
Northfield Town Forest	Conservation/Public Lands
Northumberland Watershed Forest	Conservation/Public Lands
Northwood Meadows State Park	Conservation/Public Lands
Northwood00-1625	Conservation/Public Lands
Nottingcook Forest	Conservation/Public Lands
Nottingham State Forest	Conservation/Public Lands
Nottingham01-2006	Conservation/Public Lands
NRCS_GRP_Hodge	Conservation/Public Lands
NRCS_GRP_Savage	Conservation/Public Lands
NRCS_WRP_Anthony	Conservation/Public Lands
NRCS_WRP_Bartlett	Conservation/Public Lands
NRCS_WRP_Barton	Conservation/Public Lands
NRCS_WRP_Berglund	Conservation/Public Lands
NRCS_WRP_Cannon	Conservation/Public Lands
NRCS_WRP_Daggett	Conservation/Public Lands

NRCS_WRP_Eames	Conservation/Public Lands
NRCS_WRP_Graykin	Conservation/Public Lands
NRCS_WRP_Parke	Conservation/Public Lands
NRCS_WRP_Rourke	Conservation/Public Lands
NRCS_WRP_Stingy	Conservation/Public Lands
NRCS_WRP_Sullos	Conservation/Public Lands
NRCS_WRP_Swain	Conservation/Public Lands
NRCS_WRP_Tasker	Conservation/Public Lands
NRCS_WRP_WaTutCa	Conservation/Public Lands
NRCS_WRP>Weisz	Conservation/Public Lands
NRCS_WRP_Workman	Conservation/Public Lands
O'Neal Lot	Conservation/Public Lands
Oak Hill	Conservation/Public Lands
Oak Hill Fire Tower	Conservation/Public Lands
Oak Knoll Estates	Conservation/Public Lands
Oak Knoll Open Space	Conservation/Public Lands
Old Drake Farm	Conservation/Public Lands
Old Fort Estates Common Land	Conservation/Public Lands
Olsen / Villnave	Conservation/Public Lands
Opera House	Conservation/Public Lands
Ottinger	Conservation/Public Lands
Outdoor Education Area	Conservation/Public Lands
Owl Brook	Conservation/Public Lands
Owl Brook Training Facility	Conservation/Public Lands
P. Bass Easement	Conservation/Public Lands
Pages Corner State Forest	Conservation/Public Lands
Palmer Easement	Conservation/Public Lands
Paradise Point Nature Center	Conservation/Public Lands
Parke	Conservation/Public Lands
Parker Family Trust	Conservation/Public Lands
Parsonage Lot - Town Forest	Conservation/Public Lands
Parsons Way Open Space	Conservation/Public Lands

Paul + Thelma Ambeau Memorial Forest	Conservation/Public Lands
Paul Mack/Hugh Emerson Tract	Conservation/Public Lands
Paul Mock Memorial Forest	Conservation/Public Lands
Pawtuckaway RivRes: Bond Tract	Conservation/Public Lands
Pawtuckaway State Park	Conservation/Public Lands
Peaslee Road Open Space	Conservation/Public Lands
Peirce CE	Conservation/Public Lands
Pembroke Town Forest - Butterfield Tract	Conservation/Public Lands
Pembroke Water Works	Conservation/Public Lands
Pembroke01-1623	Conservation/Public Lands
Penacook Boscawen Water Precinct	Conservation/Public Lands
Penacook Lake Watershed	Conservation/Public Lands
Pendleton	Conservation/Public Lands
Percy State Forest	Conservation/Public Lands
Percy Summer Club	Conservation/Public Lands
Perry Easement	Conservation/Public Lands
Pierson	Conservation/Public Lands
Pierson - Farmstead Lot	Conservation/Public Lands
Pillsbury Lake District - Hunting Preserve	Conservation/Public Lands
Pilote	Conservation/Public Lands
Pine Hill Park	Conservation/Public Lands
Pinegate Village Open Space	Conservation/Public Lands
Pinnacle Park	Conservation/Public Lands
Pinnacle Pond Wells	Conservation/Public Lands
Piscopo Town Forest	Conservation/Public Lands
Pittsburg Town Farm	Conservation/Public Lands
Pittsfield Aqueduct Company Land	Conservation/Public Lands
Pond of Safety Tract	Conservation/Public Lands
Pondicherry Unit of Silvio O Conte NFWR	Conservation/Public Lands
Pondicherry Wildlife Refuge	Conservation/Public Lands
Pontook - Lease Area	Conservation/Public Lands
Pontook Reservoir	Conservation/Public Lands

Popple Island	Conservation/Public Lands
Potter Farm - Floodplain	Conservation/Public Lands
Potter Farm - Upland Forest	Conservation/Public Lands
Prescott State Forest	Conservation/Public Lands
Preston	Conservation/Public Lands
Prince Pasture	Conservation/Public Lands
Proctor Academy Lands	Conservation/Public Lands
Profile Recreational Trail	Conservation/Public Lands
Public Service Co. of NH	Conservation/Public Lands
Quarries	Conservation/Public Lands
Quimby	Conservation/Public Lands
Ragged Mountain	Conservation/Public Lands
Ragged Mountain Fish & Game Club	Conservation/Public Lands
Rand	Conservation/Public Lands
Randall Property	Conservation/Public Lands
Randolph Community Forest	Conservation/Public Lands
Ransmeier Woods	Conservation/Public Lands
Rasmussen	Conservation/Public Lands
Ray Road Lot	Conservation/Public Lands
Raymond Water Department Land	Conservation/Public Lands
Reardon Tract	Conservation/Public Lands
Reiner Woodland Conservancy	Conservation/Public Lands
Reno	Conservation/Public Lands
Richard Hanson Memorial Recreation Area	Conservation/Public Lands
Richards Community Forest	Conservation/Public Lands
Ridgefield Open Space	Conservation/Public Lands
Riley Property	Conservation/Public Lands
River Access	Conservation/Public Lands
River Land Conservation Area	Conservation/Public Lands
River Street River Frontage	Conservation/Public Lands
Riverside Farm Open Space	Conservation/Public Lands
Riverside Park	Conservation/Public Lands

Robie Forest	Conservation/Public Lands
Robie, Smart, Cross & Reinert	Conservation/Public Lands
Robinson Hill Easement	Conservation/Public Lands
Rockefeller	Conservation/Public Lands
Rocks (A) / Carter	Conservation/Public Lands
Roger Harris Natural Area	Conservation/Public Lands
Roger Hersey Farm CE	Conservation/Public Lands
Roger Williams Harris Natural Area	Conservation/Public Lands
Rolfe Park - Undeveloped Area	Conservation/Public Lands
Rollins	Conservation/Public Lands
Rooney Easement	Conservation/Public Lands
Rosenblum Easement	Conservation/Public Lands
Rosenfield / Mallette Easement	Conservation/Public Lands
Ross - Agric. Pres. Rest.	Conservation/Public Lands
Rossview Farm	Conservation/Public Lands
Rowell Lot	Conservation/Public Lands
Ruesswick C.E.	Conservation/Public Lands
Russell-Shea State Forest	Conservation/Public Lands
Saddle Hill Trust	Conservation/Public Lands
Saddle Hill Trust - Farmstead Lot	Conservation/Public Lands
Sahegenet Falls Rec. Area	Conservation/Public Lands
Samuel A Tamposi Water Supply Reserve	Conservation/Public Lands
Samuel Myron Chase Wildlife Sanctuary	Conservation/Public Lands
Sanborn	Conservation/Public Lands
Sanborn - Agric. Pres. Rest.	Conservation/Public Lands
Sanborn Brook Lots	Conservation/Public Lands
Sanborn Family Trust	Conservation/Public Lands
Sanbornton Town Forest	Conservation/Public Lands
Schoodac Conservation Area	Conservation/Public Lands
School Lot - Town Forest	Conservation/Public Lands
Schuett Conservation Area	Conservation/Public Lands
Science Center Of New Hampshire	Conservation/Public Lands

Scribner-Fellows State Forest	Conservation/Public Lands
Scripture	Conservation/Public Lands
Second College Grant	Conservation/Public Lands
Seven Springs Forest	Conservation/Public Lands
Sewall Falls WMA	Conservation/Public Lands
Sewalls Falls Properties	Conservation/Public Lands
Sewalls Falls WMA	Conservation/Public Lands
Shad Path (Rice)	Conservation/Public Lands
Shady Lane	Conservation/Public Lands
Shaker State Forest	Conservation/Public Lands
Shaker Village	Conservation/Public Lands
Shatney Trusts	Conservation/Public Lands
Shea Reservation	Conservation/Public Lands
Shellcamp Conservation Area	Conservation/Public Lands
Sherburne Conservation Easement	Conservation/Public Lands
Silk Farm Wildlife Sanctuary	Conservation/Public Lands
Silk Farm Wildlife Sanctuary - Holden Trac	Conservation/Public Lands
SILVIO O. CONTE NATIONAL FISH AND WILDLIFE	Conservation/Public Lands
SILVIO O. CONTE NATIONAL FWR	Conservation/Public Lands
Sky Pond State Forest	Conservation/Public Lands
Slate Ledge	Conservation/Public Lands
Sleeper	Conservation/Public Lands
Sleeping Astronomer Forest	Conservation/Public Lands
Sloat	Conservation/Public Lands
Smith	Conservation/Public Lands
Smith River - Star Property	Conservation/Public Lands
Soucook River State Forest	Conservation/Public Lands
South Bow Rd. Parcel	Conservation/Public Lands
South Concord Meadow - Open Space	Conservation/Public Lands
South End Marsh	Conservation/Public Lands
Southworth	Conservation/Public Lands
Spaulding Lot	Conservation/Public Lands

Spaulding Lot Access	Conservation/Public Lands
Spear	Conservation/Public Lands
Spectacle Pond Cartop Boat Access	Conservation/Public Lands
Spender Meadow Lot	Conservation/Public Lands
SPNHF (Blood)	Conservation/Public Lands
Spofford Farm	Conservation/Public Lands
St. Paul's School Land	Conservation/Public Lands
St. Paul's School Land - Bow	Conservation/Public Lands
State Forest Nursery	Conservation/Public Lands
State Prison Farm + Quarries	Conservation/Public Lands
Steady Easement	Conservation/Public Lands
Steve Cruikshank Memorial Easement	Conservation/Public Lands
Stevens (Columbia Lot)/Dumoine Farms	Conservation/Public Lands
Stevens Memorial Forest	Conservation/Public Lands
Stevens Property	Conservation/Public Lands
Stevens, D	Conservation/Public Lands
Stillbach	Conservation/Public Lands
Stitzinger	Conservation/Public Lands
Stonehouse Pond	Conservation/Public Lands
Storer Lot	Conservation/Public Lands
Storer Lot - Town Forest	Conservation/Public Lands
Strawberry Hill State Forest	Conservation/Public Lands
Sugar Hill State Forest	Conservation/Public Lands
Sugar Hill Town Forest	Conservation/Public Lands
Suncook River - Access	Conservation/Public Lands
Sunnycrest Farm Inc.	Conservation/Public Lands
Swain	Conservation/Public Lands
Swains Lake Village Water District	Conservation/Public Lands
Sweatt Tract	Conservation/Public Lands
Talbot	Conservation/Public Lands
Taylor Revocable Trust, Joshua E.	Conservation/Public Lands
Taylor State Forest	Conservation/Public Lands

Technical Institute - Low Area	Conservation/Public Lands
Texas Hill Ski Trails	Conservation/Public Lands
Thayer, H. Redmond Revocable Trust	Conservation/Public Lands
The Rocks	Conservation/Public Lands
Thompson	Conservation/Public Lands
Thunberg	Conservation/Public Lands
Thurston Woods (formerly Yurka)	Conservation/Public Lands
Tilton02-252	Conservation/Public Lands
Tilton04-01981	Conservation/Public Lands
Tioga River Wildlife and Conservation Area	Conservation/Public Lands
Town Forest - Hamlin Rec. Area	Conservation/Public Lands
Town Forest Lot	Conservation/Public Lands
Town of Boscawen Land	Conservation/Public Lands
Town of Bow Land - Lot 4-50	Conservation/Public Lands
Town of Chester Land	Conservation/Public Lands
Town of Danbury Land	Conservation/Public Lands
Town of Epsom Land	Conservation/Public Lands
Town of Hill Land	Conservation/Public Lands
Town of Hooksett Land	Conservation/Public Lands
Town of Hopkinton Land	Conservation/Public Lands
Town of Lancaster Land	Conservation/Public Lands
Town of Northwood Land	Conservation/Public Lands
Town of Pembroke Land	Conservation/Public Lands
Town of Pittsfield Land	Conservation/Public Lands
Town of Whitefield Land	Conservation/Public Lands
Town Woodland	Conservation/Public Lands
TPK Trust - Linda Smith	Conservation/Public Lands
Tracy Lot - Big Meadow	Conservation/Public Lands
Triacca	Conservation/Public Lands
Trickey Lot - Town Forest	Conservation/Public Lands
Turkey Pond	Conservation/Public Lands
Turtle Pond	Conservation/Public Lands

Turtle Pond East	Conservation/Public Lands
Turtle Pond Village	Conservation/Public Lands
Turtletown Pond WMA	Conservation/Public Lands
Twin Mountain Fish Hatchery	Conservation/Public Lands
Twitchell Environmental Study Area	Conservation/Public Lands
Umbagog State Park	Conservation/Public Lands
UNH - Mendums Pond Recreation Area/McDan	Conservation/Public Lands
UNH - Saddleback Mountain	Conservation/Public Lands
Unitil Easement	Conservation/Public Lands
University Heights Easement 1	Conservation/Public Lands
University Heights Easement 10	Conservation/Public Lands
University Heights Easement 12	Conservation/Public Lands
University Heights Easement 2	Conservation/Public Lands
University Heights Easement 3	Conservation/Public Lands
University Heights Easement 4	Conservation/Public Lands
University Heights Easement 5	Conservation/Public Lands
University Heights Easement 6	Conservation/Public Lands
University Heights Easement 7	Conservation/Public Lands
University Heights Easement 8	Conservation/Public Lands
University Heights Easement 9	Conservation/Public Lands
Universtiy Heights Easement 5	Conservation/Public Lands
Upper Merrimack Oxbow	Conservation/Public Lands
Upton-Morgan State Forest	Conservation/Public Lands
Verres Financial Corp.	Conservation/Public Lands
Vickie Bunnell Preserve	Conservation/Public Lands
Victor	Conservation/Public Lands
Victor's Woods	Conservation/Public Lands
Village of Northwood Ridge Water District	Conservation/Public Lands
W.Portsmouth Street\City of Concord	Conservation/Public Lands
Wade State Forest	Conservation/Public Lands
Wal-Mart Stores, Inc.	Conservation/Public Lands
Walker State Forest	Conservation/Public Lands

Wallman C.M.	Conservation/Public Lands
Ware Easement	Conservation/Public Lands
Ware, D	Conservation/Public Lands
Warren	Conservation/Public Lands
Washburn Family Forest	Conservation/Public Lands
Waukegan Highlands Park	Conservation/Public Lands
Webster Lake WMA	Conservation/Public Lands
Webster Park - Undeveloped Area	Conservation/Public Lands
Wedgewood Drive Open Space	Conservation/Public Lands
Wedick Total Land	Conservation/Public Lands
Weeks Lancaster Trust	Conservation/Public Lands
Weeks State Park	Conservation/Public Lands
Weir Road Lot	Conservation/Public Lands
Weiss Town Forest	Conservation/Public Lands
Well Buffer Area	Conservation/Public Lands
Wellington State Park	Conservation/Public Lands
Wells Town Forest	Conservation/Public Lands
Welton Falls State Forest	Conservation/Public Lands
West Iron Works Road State Forest	Conservation/Public Lands
West Terrill Park	Conservation/Public Lands
West Village Open Space	Conservation/Public Lands
White Farm	Conservation/Public Lands
White Mountain National Forest	Conservation/Public Lands
White Sands Conservation Area	Conservation/Public Lands
Whitefield Water Department Land	Conservation/Public Lands
Whitehouse Acres Open Space	Conservation/Public Lands
Whittemore Town Forest	Conservation/Public Lands
Whittier Drive Open Space	Conservation/Public Lands
Wildlife Preserve	Conservation/Public Lands
William H Thomas State Forest	Conservation/Public Lands
Willoughby Easement	Conservation/Public Lands
Wilson	Conservation/Public Lands

Winant Park	Conservation/Public Lands
Witte Forest Management Area	Conservation/Public Lands
Wood Property	Conservation/Public Lands
Woodman	Conservation/Public Lands
Woodman Forest	Conservation/Public Lands
Woodman Marsh WMA	Conservation/Public Lands
Woodman State Forest	Conservation/Public Lands
Worthen	Conservation/Public Lands
Yankee Forest Tract	Conservation/Public Lands
Yeaton	Conservation/Public Lands
Yeaton Lot	Conservation/Public Lands

Site 102.45(c) Part 1: Lakes, Ponds and Rivers

Name	Type of Scenic Resource
Akers Pond	Great Ponds
Ammonoosuc River - Apthorp Dam	Great Ponds
Archery Pond	Great Ponds
Back Lake	Great Ponds
Baker Brook Pond	Great Ponds
Baker Pond	Great Ponds
Bear Brook - Hall Mountain Marsh	Great Ponds
Bear Brook - Hayes Marsh	Great Ponds
Beaver Pond Dam - North Branch River	Great Ponds
Big Dummer Pond	Great Ponds
Blood Pond	Great Ponds
Boat Meadow Brook - Pembroke Water Works	Great Ponds
Bow Brook - Thayers Pond	Great Ponds
Bragg Pond	Great Ponds
Briar Hydro Penstock Intake	Great Ponds
Briar Pipe Dam	Great Ponds
Burnham Brook - Lane Brook	Great Ponds

Burns Pond	Great Ponds
Catamount Pond	Great Ponds
Cate Brook - Crowley Pond	Great Ponds
Cates Brook Dam	Great Ponds
Cedar Pond	Great Ponds
Chance Pond Brook - Webster Lake Dam Impoundment Ds Of Rt 11	Great Ponds
Cherry Pond	Great Ponds
Christine Lake	Great Ponds
Clarksville Pond	Great Ponds
Cold Brook	Great Ponds
Cold Spring Brook	Great Ponds
Connecticut River - Canaan Hydro	Great Ponds
Connecticut River - Gilman Dam Pond	Great Ponds
Contoocook River - Penacook Lower Falls	Great Ponds
Contoocook River - Penacook Upper Falls Dam	Great Ponds
Contoocook River - York Dam Pond	Great Ponds
Corser Pond	Great Ponds
Dells Pond Outlet Dam - Dells Brook	Great Ponds
Diamond Pond	Great Ponds
Dickerman Brook	Great Ponds
Dolf Brook	Great Ponds
Dube Pond North Dike	Great Ponds
Dug Pond	Great Ponds
Farm Pond	Great Ponds
Fisk Hill Pond	Great Ponds
Flaghole Pond	Great Ponds
Forest Lake	Great Ponds
Fort Eddy Pond	Great Ponds
Fountain Pond North Dike - Shaker Brook	Great Ponds
Four Mile Pond	Great Ponds
Franklin Falls Flood Ctrl - Pemigewasset River	Great Ponds

Frenchs Brook	Great Ponds
Garland Brook	Great Ponds
Giles Pond	Great Ponds
Gordon Hill Water Supply Pond	Great Ponds
Governors Lake	Great Ponds
Greenough Pond	Great Ponds
Grist Mill Pond	Great Ponds
Harper Brook Dam	Great Ponds
Hayward Brook - Morrill Pond	Great Ponds
Head Pond	Great Ponds
Hirst Marsh Dam	Great Ponds
Hoit Road Marsh Dam	Great Ponds
Hole Brook Pond	Great Ponds
Horseshoe Pond	Great Ponds
Israel River	Great Ponds
Jericho Lake	Great Ponds
Johns River - Airport Marsh Dam Pond	Great Ponds
Kenison Pond	Great Ponds
Kimball Pond	Great Ponds
Knowles Pond - Tr Williams Brook	Great Ponds
Lake Francis	Great Ponds
Lake Umbagog	Great Ponds
Lakins Pond	Great Ponds
Lamprey River	Great Ponds
Langley Pond	Great Ponds
Little Acorn Pond	Great Ponds
Little Cherry Pond	Great Ponds
Little Diamond Pond	Great Ponds
Little Dummer Pond	Great Ponds
Little Squam Lake	Great Ponds
Little Turkey Pond	Great Ponds
Long Pond	Great Ponds

Lower Freezes Pond	Great Ponds
Lower Goodwin Point Pond	Great Ponds
Martin Meadow Pond	Great Ponds
Mason Brook	Great Ponds
Merrill Park Pond	Great Ponds
Merrimack River - Garvins Falls Dam	Great Ponds
Merrimack River - Hooksett Hydro Pond	Great Ponds
Millsfield Pond	Great Ponds
Mirror Lake	Great Ponds
Moose Pond	Great Ponds
Morrill Pond #1	Great Ponds
Mud Pond	Great Ponds
Nathan Pond	Great Ponds
Newfound Lake	Great Ponds
North Branch Gale River - Littleton Reservoir	Great Ponds
North Pond	Great Ponds
North River Pond	Great Ponds
Onway Lake	Great Ponds
Ox Pond	Great Ponds
Oxbow Pond	Great Ponds
Pawtuckaway Lake	Great Ponds
Pemigewasset Lake	Great Ponds
Pemigewasset River - Ayers Island Dam Pond	Great Ponds
Pemigewasset River - Eastman Falls	Great Ponds
Penacook Lake	Great Ponds
Pike Pond	Great Ponds
Pinetree Power Fire Pond Dam	Great Ponds
Pinnacle Pond	Great Ponds
Plausawa Country Club Pond	Great Ponds
Pontook Reservoir	Great Ponds
Quincy Pond	Great Ponds
Roberts Brook - Farm Pond	Great Ponds

Rocky Pond	Great Ponds
Shaker Branch - Turning Mill Pond East Dam	Great Ponds
Shaw Pond	Great Ponds
Sheep Davis Road Dam	Great Ponds
Silver Lake	Great Ponds
Snow Pond	Great Ponds
Snow Pond Dam	Great Ponds
Sondogardy Pond	Great Ponds
South Pond	Great Ponds
Spectacle Pond	Great Ponds
Spruce Pond	Great Ponds
Squam River - Ashland Paper Mill Middle Dam	Great Ponds
State Game Farm Pond	Great Ponds
Stirrup Iron Brook - Stirrup Iron Pond	Great Ponds
Suncook River - China Mill Dam	Great Ponds
Suncook River - Webster Mill	Great Ponds
Tannery Brook	Great Ponds
The Channel	Great Ponds
Three Trio Pond	Great Ponds
Thurston Pond	Great Ponds
Turkey River - Lower School Pond	Great Ponds
Turtle Pond	Great Ponds
Unnamed Brook	Great Ponds
Unnamed Pond	Great Ponds
Upper Ammonoosuc River - Brooklyn Dam	Great Ponds
Upper Ammonoosuc River - Red Dam	Great Ponds
Upper Ammonoosuc River - Weston Dam	Great Ponds
Upper Freeses Pond	Great Ponds
Upper Goodwin Point Pond	Great Ponds
Waukeena Lake	Great Ponds
Webster Lake	Great Ponds
Webster Pond	Great Ponds

Weed Pond	Great Ponds
Weeks Pond	Great Ponds
Wicwas Lake	Great Ponds
Williams Brook	Great Ponds
Williams Brook-Chestnut Pond Reservoir	Great Ponds
Winnepesaukee River - Franklin Falls Hydro Dam 2	Great Ponds
Winnepesaukee River - Stevens Mill Dam	Great Ponds
Woods Brook	Great Ponds
Woods Brook - Reflecting Pond	Great Ponds
Abel Brook	Public Rivers
Academy Brook - Loon Pond Brook	Public Rivers
Ad Chase Brook	Public Rivers
Akers Pond	Public Rivers
Alder Brook - Unnamed Brook	Public Rivers
Ames Brook - From Jackson Pond Dam	Public Rivers
Ames Brook - to Suncook River	Public Rivers
Ames Brook - Unnamed Brook	Public Rivers
Ames Brook - Unnamed Brooks - to Squam River	Public Rivers
Amey Brook - Unnamed Brook	Public Rivers
Ammonoosuc River	Public Rivers
Ammonoosuc River - Unnamed Brook	Public Rivers
Androscoggin River	Public Rivers
Back Creek - Unnamed Brook	Public Rivers
Back Lake	Public Rivers
Back Lake Brook	Public Rivers
Backfield Brook	Public Rivers
Bailey Brook	Public Rivers
Baker Brook - Unnamed Brook	Public Rivers
Baker Pond	Public Rivers
Baker River	Public Rivers
Barrett Brook	Public Rivers

Barrett Brook - Unnamed Brook	Public Rivers
Bean River - Unnamed Brook	Public Rivers
Bear Brook	Public Rivers
Bear Brook - Carroll Stream - Unnamed Brook	Public Rivers
Bear Brook - Hayes Marsh	Public Rivers
Bear Brook - Nh Forest and Lands Division	Public Rivers
Bear Brook - Pease Brook	Public Rivers
Bear Brook - Unnamed Brook	Public Rivers
Beaver Brook - Unnamed Brook	Public Rivers
Beaver Meadow Brook	Public Rivers
Beaver Pond Dam - North Branch River	Public Rivers
Bee Hole Brook	Public Rivers
Bee Hole Brook - Giddis Brook	Public Rivers
Bela Brook - Boutwell Mill Brook	Public Rivers
Bela Brook - Unnamed Brook - One Stack Brook	Public Rivers
Bennett Brook	Public Rivers
Bennett Brook - Unnamed Brook	Public Rivers
Bishop Brook - Cedar Brook - Haines Brook - Unnamed Brook - Gulch Brook	Public Rivers
Bishop Brook - Pond Brook	Public Rivers
Black Brook	Public Rivers
Black Brook - Hardy Brook	Public Rivers
Black Brook - Unnamed Brook	Public Rivers
Blake Brook	Public Rivers
Blake Brook - Unnamed Brook	Public Rivers
Blood Pond	Public Rivers
Boat Meadow Brook	Public Rivers
Boat Meadow Brook - Pembroke Water Works	Public Rivers
Boat Meadow Brook - Unnamed Brook	Public Rivers
Bog Brook	Public Rivers
Bog Brook - Avery Brook - Unnamed Brook	Public Rivers

Bog Brook - Gay Brook - Sugarloaf Brook - Unnamed Brook	Public Rivers
Bog Brook - Unnamed Brook	Public Rivers
Bow Bog Brook	Public Rivers
Bow Bog Brook - Horse Brook	Public Rivers
Bow Brook	Public Rivers
Bowen Brook - Unnamed Brook	Public Rivers
Bradley Brook - Unnamed Brook	Public Rivers
Bragg Pond	Public Rivers
Brickyard Brook - Unnamed Brook	Public Rivers
Brock Brook - Town Brook	Public Rivers
Brown Brook	Public Rivers
Bryant Brook	Public Rivers
Burnham Brook	Public Rivers
Burnham Brook - Lane Brook	Public Rivers
Burns Pond	Public Rivers
Burnside Brook - Unnamed Brook	Public Rivers
Burnt Brook - South Branch Gale River	Public Rivers
Carroll Stream - Cherry Mountain Brook - Unnamed Brook - Carter Brook	Public Rivers
Carroll Stream - Unnamed Brook	Public Rivers
Catamount Brook	Public Rivers
Catamount Pond	Public Rivers
Cate Brook	Public Rivers
Cedar Brook	Public Rivers
Cedar Str - Middle Br Cedar Str - Crystal Brk - West Br Cedar Str	Public Rivers
Cemetery Brook - Unnamed Brook	Public Rivers
Chance Pond Branch	Public Rivers
Chance Pond Branch - Chance Brook Hydro Dam	Public Rivers
Chance Pond Brook - Webster Lake Dam Impoundment Ds Of Rt 11	Public Rivers
Chase Brook - Unnamed Brook	Public Rivers

Cherry Pond	Public Rivers
Chesley Brook - Templeton Brook	Public Rivers
Chickwolnepy Stream - Unnamed Brook	Public Rivers
Christine Lake	Public Rivers
Cilley Brook - Fretts Brook	Public Rivers
Clay Brook	Public Rivers
Clear Stream	Public Rivers
Clear Stream - Flume Brook - Unnamed Brook - Cascade Brook	Public Rivers
Cockermouth Brook	Public Rivers
Cold Brook	Public Rivers
Cold Spring Brook	Public Rivers
Cold Stream	Public Rivers
Connary Brook - Unnamed Brook	Public Rivers
Connecticut River	Public Rivers
Connecticut River - Emery Brook - Sheridan Brook - Unnamed Brook	Public Rivers
Connecticut River - Gilman Dam Pond	Public Rivers
Contoocook River	Public Rivers
Contoocook River - Lower Falls Dam to Merrimack R	Public Rivers
Contoocook River - Penacook Lower Falls	Public Rivers
Contoocook River - Penacook Upper Falls Dam	Public Rivers
Contoocook River - York Dam Pond	Public Rivers
Coolidge Brook	Public Rivers
Corser Brook - Unnamed Brook	Public Rivers
Cross Brook	Public Rivers
Cross Brook - Stirrup Iron Brook	Public Rivers
Cummings Brook	Public Rivers
Cummings Brook - Sunny Brook Hydro	Public Rivers
Cummings Brook - Whipple Brook	Public Rivers
Cushman Brook	Public Rivers
Danforth Brook	Public Rivers

Dead Diamond River	Public Rivers
Dead River - Jericho Brook - Unnamed Brook	Public Rivers
Dead Water Stream - Unnamed Brook - East Branch Dead Water Stream - Kidder Brook	Public Rivers
Dean Brook - Unnamed Brook	Public Rivers
Deception Brook - Unnamed Brook	Public Rivers
Deer Brook	Public Rivers
Deer Meadow Brook - Pond Brook	Public Rivers
Diamond Pond	Public Rivers
Dickerman Brook	Public Rivers
Dickerman Brook - to Pemigewasset River	Public Rivers
Dickinson Brook	Public Rivers
Dineen Recreation Pond	Public Rivers
Dixie Brook	Public Rivers
Dolf Brook	Public Rivers
Dry Brook	Public Rivers
Dyer Brook	Public Rivers
East Branch Bog Brook	Public Rivers
East Branch Mohawk River - Unnamed Brook	Public Rivers
East Branch Stratford Bog Brook	Public Rivers
East Branch Swift Diamond River - Fourmile Brook - Unnamed Brook	Public Rivers
Favreau Brook	Public Rivers
Fordway Brook - Unnamed Brook	Public Rivers
Forest Pond Brook	Public Rivers
Forest Pond Brook - Unnamed Brooks Thru Big Meadow Marsh	Public Rivers
Fowler Brook	Public Rivers
Fowler Brook - Unnamed Brook	Public Rivers
Fowler River - Unnamed Brook	Public Rivers
Franklin Falls Flood Ctrl - Pemigewasset River	Public Rivers
Frenchs Brook	Public Rivers
Frenchs Brook - Unnamed Brook	Public Rivers

Gale R - Beaver Brk - South Br Gale R - North Br Gale R - Unnamed Brk	Public Rivers
Gale River - Unnamed Brook - Bowen Brook	Public Rivers
Gale River - Wiseman Brook	Public Rivers
Garland Brook	Public Rivers
Garland Brook - Great Brook - Unnamed Brook	Public Rivers
Garland Brook - Unnamed Brook - Bunnell Brook	Public Rivers
Garland River - Garland Brook Dam	Public Rivers
Giles Pond	Public Rivers
Glines Brook	Public Rivers
Glines Brook - Unnamed Brook	Public Rivers
Glove Hollow Brook	Public Rivers
Governors Lake - Cilley Rd Inlet	Public Rivers
Great Brook - Unnamed Brook	Public Rivers
Greenough Brook	Public Rivers
Greenough Pond	Public Rivers
Gulf Brook - Unnamed Brook	Public Rivers
Halls Stream	Public Rivers
Harper Brook - Hoyt Brook	Public Rivers
Hartford Brook	Public Rivers
Hartford Brook - Wildlife Pond Dam	Public Rivers
Hatchery Brook - to Gordon Hill Water Supply Pond	Public Rivers
Haystack Brook - Unnamed Brook	Public Rivers
Hayward Brook	Public Rivers
Hayward Brook - Hackett Brook	Public Rivers
Head Pond	Public Rivers
Hirst Marsh Dam	Public Rivers
Hollow Brook - Unnamed Brook	Public Rivers
Horseshoe Pond	Public Rivers
Hoyl Brook	Public Rivers
Indian Brook	Public Rivers
Indian Brook - Unnamed Brook	Public Rivers

Indian Stream - Moose Pond Brook - Unnamed Brook	Public Rivers
Island Brook	Public Rivers
Israel River	Public Rivers
Israel River - Red Brook - Unnamed Brook	Public Rivers
Israel River - Unnamed Brook - Cascade Brook - Castle Brook - Mystic, The	Public Rivers
Jericho Brook - Unnamed Brook	Public Rivers
Jimmy Cole Brook	Public Rivers
Johns River	Public Rivers
Johns River - Unnamed Brook	Public Rivers
Jones Brook	Public Rivers
Kendall Brook	Public Rivers
Kenison Pond	Public Rivers
Knowles Pond-Northern Inlet	Public Rivers
Knox Brook - Unnamed Brook	Public Rivers
Labrador Brook - Unnamed Brook	Public Rivers
Lake Ave Trib	Public Rivers
Lake Francis	Public Rivers
Lake Umbagog	Public Rivers
Lake View Brook	Public Rivers
Lamprey River	Public Rivers
Lamprey River - and Headwater Tributaries	Public Rivers
Lamprey River - Unnamed Brook	Public Rivers
Larrys Brook	Public Rivers
Leavitt Stream - Unnamed Brook	Public Rivers
Leighton Brook	Public Rivers
Little Bear Brook	Public Rivers
Little Cherry Pond	Public Rivers
Little Diamond Pond	Public Rivers
Little Dummer Pond	Public Rivers
Little River	Public Rivers
Little River - Unnamed Brook	Public Rivers

Little Squam Lake	Public Rivers
Little Suncook River - Blake Brook - Lockes Brook	Public Rivers
Little Turkey Pond	Public Rivers
Lockes Brook - Unnamed Brook	Public Rivers
Long Pond	Public Rivers
Lower Freeses Pond	Public Rivers
Magoon Brook	Public Rivers
Marden Brook	Public Rivers
Marden Brook Hydro	Public Rivers
Martin Meadow Pond	Public Rivers
Martin Meadow Pond-Inlet	Public Rivers
Mason Brook - Unnamed Brook	Public Rivers
Mccordick Brook	Public Rivers
Meetinghouse Brook	Public Rivers
Merrill Brook	Public Rivers
Merrimack River	Public Rivers
Merrimack River - Garvins Falls Dam	Public Rivers
Mill Brook	Public Rivers
Mill Brook - Appleby Road Brook - Unnamed Brook	Public Rivers
Mill Brook - Stanley Slide Brook - Streator Brook - Unnamed Brook	Public Rivers
Mill Brook - Unnamed Brook	Public Rivers
Mill Brook - Unnamed Brook - East Branch Mill Brook - Hickey Brook	Public Rivers
Mill Brook - Unnamed Brook - West Branch Mill Brook	Public Rivers
Mill Brook Inlet to Loon Pond	Public Rivers
Millsfield Pond	Public Rivers
Millsfield Pond Brook	Public Rivers
Mirror Lake	Public Rivers
Mitchell Brook - Unnamed Brook	Public Rivers
Mohawk River - Unnamed Brook - Moose Brook	Public Rivers

Mohawk River - Unnamed Brook - North Branch Beaver Brook	Public Rivers
Mohawk River - Unnamed Brook - Read Brook	Public Rivers
Mohawk River - Unnamed Brook - West Branch Mohawk River - Roaring Brook	Public Rivers
Moore Brook	Public Rivers
Moose Brook	Public Rivers
Moose Brook - Unnamed Brook	Public Rivers
Moose Pond	Public Rivers
Morgan Brook - to Fire Pond	Public Rivers
Morrill Pond #1	Public Rivers
Mount Pisgah Brook - Murray Mill Brook	Public Rivers
Mountain Brook	Public Rivers
Mountain Brook - Unnamed Brook	Public Rivers
Mud Pond	Public Rivers
Nash Stream - Unnamed Brook - East Branch Nash Stream - Silver Brook	Public Rivers
Nash Stream - Unnamed Brook - Slide Brook	Public Rivers
Nathan Pond	Public Rivers
Nathan Pond Brook	Public Rivers
Needle Shop Brook	Public Rivers
Needle Shop Brook - Needle Shop Dam li	Public Rivers
Newell Brook	Public Rivers
Newfound Lake	Public Rivers
Newfound River	Public Rivers
Nicholls Brook	Public Rivers
North Branch Gale River - Unnamed Brook	Public Rivers
North Branch River	Public Rivers
North Branch River - Unnamed Brook	Public Rivers
North Branch River - Unnamed Brooks	Public Rivers
North Branch Upper Ammonoosuc River	Public Rivers
North Branch Upper Ammonoosuc River - Unnamed Brook - Cedar Brook	Public Rivers

North River	Public Rivers
North River - Bean River	Public Rivers
North River - Unnamed Brook	Public Rivers
North River Pond	Public Rivers
Nuttings Beach Brook	Public Rivers
Onway Lake	Public Rivers
Otter Brook - Bone Brook - Caleb Brook - Redman Brook - Unnamed Brook	Public Rivers
Otter Brook - Unnamed Brook	Public Rivers
Owl Brook - Carr Brook	Public Rivers
Oxbow Pond	Public Rivers
Packer Brook	Public Rivers
Palmer Brook - Unnamed Brook	Public Rivers
Patten Brook	Public Rivers
Patten Brook - Unnamed Brook	Public Rivers
Pawtuckaway Lake	Public Rivers
Pea Porridge Brook	Public Rivers
Pemigewasset Lake	Public Rivers
Pemigewasset River	Public Rivers
Pemigewasset River - Ayers Island Dam Pond	Public Rivers
Pemigewasset River - Eastman Falls	Public Rivers
Pemigewasset River - Spring Brook	Public Rivers
Penacook Lake	Public Rivers
Perry Brook - Sanborn Brook	Public Rivers
Perry Stream - Lamb Valley Brook	Public Rivers
Pettingill Brook - Unnamed Brook	Public Rivers
Philbrick Brook	Public Rivers
Phillips Brk - W Branch Phillips - Nelson - Watkinson - Wells Brks - and Tribs	Public Rivers
Phillips Brook - Crystal Falls Hydro	Public Rivers
Phillips Brook - Jodrie Brook - Number Two Brook - Unnamed Brook	Public Rivers
Phillips Brook - Unnamed Brook	Public Rivers

Pickard Brook - Unnamed Brook	Public Rivers
Pike Pond	Public Rivers
Pine Hill Brook	Public Rivers
Pine Island Brook	Public Rivers
Pinetree Power Fire Pond Dam	Public Rivers
Plausawa Country Club Pond	Public Rivers
Pond Brook	Public Rivers
Pond Brook - From Upper Dummer Pond to Lower Dummer Pond	Public Rivers
Pontook Reservoir	Public Rivers
Pontook Reservoir Canal to Powerhouse	Public Rivers
Potash Brook	Public Rivers
Potter Brook	Public Rivers
Prescott Brook	Public Rivers
Priscilla Brook - Unnamed Brook	Public Rivers
Punch Brook	Public Rivers
Punch Brook - Webster Place Dam	Public Rivers
Quincy Pond	Public Rivers
Rattlesnake Brook	Public Rivers
Roaring Brook	Public Rivers
Roaring Brook - Ames Brook - Moore Brook - Unnamed Brook	Public Rivers
Roaring Brook - Unnamed Brook	Public Rivers
Robbins Brook - Unnamed Brook	Public Rivers
Roberts Brook	Public Rivers
Roby Brook - Unnamed Brook	Public Rivers
Rocky Pond	Public Rivers
Rowells Brook	Public Rivers
Rowells Brook - Unnamed Brook	Public Rivers
Salmon Brook	Public Rivers
Salmon Brook - Emerson Brook	Public Rivers
Salmon Brook - Giles Brook	Public Rivers

Salmon Brook - Threshing Mill Brook	Public Rivers
Sanders Brook - Unnamed Brook	Public Rivers
Scott Brook	Public Rivers
Sessions Brook - Unnamed Brook	Public Rivers
Shaw Brook	Public Rivers
Sheep Davis Road Dam	Public Rivers
Sherburn Stream	Public Rivers
Simms Str - East Br Simms Str - Unnamed Brk - Uran Brk - Moran Brk - Boy Brk	Public Rivers
Simms Stream - Unnamed Brook - West Branch Simms Stream	Public Rivers
Smith River	Public Rivers
Snow Pond	Public Rivers
Snow Pond Dam	Public Rivers
Sondogardy Pond	Public Rivers
Soucook River	Public Rivers
Soucook River - Bumfagon Brook	Public Rivers
Soucook River - Cemetery Brook	Public Rivers
Soucook River - Clark Brook	Public Rivers
Soucook River - Frenchs Brook	Public Rivers
South Br Gale R - Thompson Brk - Scarface Brk - Spruce Brk - Unnamed Brk	Public Rivers
South Branch Israel River - Unnamed Brook - Little Bear Brook	Public Rivers
South Valley Brook - Unnamed Brook	Public Rivers
Spectacle Pond	Public Rivers
Spring Brook - Unnamed Brook	Public Rivers
Spruce Pond	Public Rivers
Squam River	Public Rivers
Squam River - Ashland Paper Mill Middle Dam	Public Rivers
Squam River - L W Packard Power Dam	Public Rivers
Squeexe Hole Brook - Unnamed Brook	Public Rivers
Stag Hollow Brook - Unnamed Brook	Public Rivers

Stalbird Brook - Unnamed Brook	Public Rivers
Stark Brook - Unnamed Brooks	Public Rivers
State Game Farm Pond	Public Rivers
Stirrup Iron Brook - Allen Brook	Public Rivers
Stirrup Iron Brook - Stirrup Iron Pond	Public Rivers
Stirrup Iron Brook - Unnamed Brook	Public Rivers
Sucker Brook - Unnamed Brook	Public Rivers
Sucker Brook - Unnamed Brooks	Public Rivers
Suncook River	Public Rivers
Suncook River - Huckins Mill Dam	Public Rivers
Swift Diamond R - Gulf Brk - Bateman Brk - Horn Brk - Keyser Brk - Tracy Brk	Public Rivers
Swift Diamond River	Public Rivers
Tannery Brook	Public Rivers
Tannery Brook - Cold Brook	Public Rivers
Tenmile Brook - Unnamed Brook	Public Rivers
Thurber Brook	Public Rivers
Thurston Pond	Public Rivers
Tioga River	Public Rivers
Tioga River - Pumping Station Branch	Public Rivers
Tucker Brook - Unnamed Brook	Public Rivers
Turee Brook - White Brook	Public Rivers
Turkey River	Public Rivers
Turkey River - Bow Brook	Public Rivers
Turkey River - Unnamed Brook	Public Rivers
Turtle Pond	Public Rivers
Tuttle Brook - Unnamed Brook	Public Rivers
Unnamed Brook	Public Rivers
Unnamed Brook - Bog Branch	Public Rivers
Unnamed Brook - Bog Brook	Public Rivers
Unnamed Brook - Flowing North to Ammonoosuc River From Bethlehem Landfill	Public Rivers

Unnamed Brook - From Governors Lake to Lamprey River	Public Rivers
Unnamed Brook - From Moose Pond to Androscoggin River	Public Rivers
Unnamed Brook - From Unnamed Pond to Merrimack River	Public Rivers
Unnamed Brook - Hatch Brook	Public Rivers
Unnamed Brook - Inlet to Marsh Pond	Public Rivers
Unnamed Brook - Mason Brook	Public Rivers
Unnamed Brook - North Inlet	Public Rivers
Unnamed Brook - Noth Inlet to Forest Lake	Public Rivers
Unnamed Brook - Pine Island Brook	Public Rivers
Unnamed Brook - Swift Diamond River	Public Rivers
Unnamed Brook - to Horseshoe Pond East Inlet	Public Rivers
Unnamed Brook - to Merrimack River	Public Rivers
Unnamed Brook - to Onway Lake	Public Rivers
Unnamed Brook - to Pawtuckaway Pond East Side	Public Rivers
Unnamed Brook - to Walker Pond From Northeast Inlet	Public Rivers
Unnamed Brook - to Webster Lake	Public Rivers
Unnamed Brook - West Inlet	Public Rivers
Unnamed Brook Along Meadowview Dr	Public Rivers
Unnamed Brooks - From Forest Lake to Burns Pond	Public Rivers
Unnamed Brooks - to Turee Pond From South Inlet	Public Rivers
Unnamed Pond	Public Rivers
Upper Ammonoosuc River	Public Rivers
Upper Ammonoosuc River - Fifield Brook	Public Rivers
Upper Freeses Pond	Public Rivers
Upper Goodwin Point Pond	Public Rivers
W Br Dead Diamond - Buckhorn Brk - Unnamed Brk - Hellgate Brk - Rowell Brk	Public Rivers
Wallace Brook	Public Rivers
Waukeena Lake	Public Rivers

Webster Lake	Public Rivers
Weeks Brook	Public Rivers
Welch Brook	Public Rivers
West Branch Clear Stream	Public Rivers
West Branch Mohawk River	Public Rivers
West Branch Phillips Brook	Public Rivers
Whipple Brook	Public Rivers
Whittemore Brook	Public Rivers
Wickwas Lake Outlet Stream	Public Rivers
Wicwas Lake	Public Rivers
Williams Brook	Public Rivers
Winnepesaukee River	Public Rivers
Winnepesaukee River - Franklin Falls Hydro Dam 2	Public Rivers
Winnepesaukee River - Stevens Mill Dam	Public Rivers
Woodman Brook	Public Rivers
Woods Brook	Public Rivers
Zealand River - Hale Brook - Unnamed Brook - Mount Tom Brook	Public Rivers

Site 102.45(c) Part 2: Scenic Drives

Name	Type of Scenic Resource
Acre Rd	Public Roads
10th Mountain Rd	Public Roads
10th Range Rd	Public Roads
4h Camp Rd	Public Roads
7th. Range Rd	Public Roads
A St	Public Roads
Aarons Way	Public Roads
Abberton Rd	Public Roads
Abbey Rd	Public Roads
Abbott Ct	Public Roads

Abbott Rd	Public Roads
Abbottville Rd	Public Roads
Abby Dr	Public Roads
Abel Rd	Public Roads
Abenaki Ln	Public Roads
Abigails Cir	Public Roads
Academy Dr	Public Roads
Academy Rd	Public Roads
Academy St	Public Roads
Access Rd	Public Roads
Access Road	Public Roads
Achorn Hill Rd	Public Roads
Ackerman Rd	Public Roads
Acorn Dr	Public Roads
Ad Chase Rd	Public Roads
Ada Way	Public Roads
Adams Ave	Public Roads
Adams Hill Rd	Public Roads
Adams Rd	Public Roads
Adams St	Public Roads
Addison Rd	Public Roads
Adonis Ct	Public Roads
Agassiz St	Public Roads
Aherns Ct	Public Roads
Aiken Ave	Public Roads
Airport Ln 1	Public Roads
Airport Ln 2	Public Roads
Airport Ln 3	Public Roads
Airport Ln 4	Public Roads
Airport Loop	Public Roads
Airport Rd	Public Roads
Akerman Ln	Public Roads

Akers Pond Rd	Public Roads
Akwa Vis	Public Roads
Akwa Vista	Public Roads
Albert Ave	Public Roads
Alberts Dr	Public Roads
Albin Ave	Public Roads
Albin Rd	Public Roads
Albin St	Public Roads
Alder Brook Rd	Public Roads
Alder Creek Dr	Public Roads
Alderbrook Rd	Public Roads
Alderwood Ct	Public Roads
Alexander Dr	Public Roads
Alexander Ln	Public Roads
Algonquin Path	Public Roads
Alice Dr	Public Roads
Aljin Rd	Public Roads
Allard St	Public Roads
Allen Ave	Public Roads
Allen Farm Rd	Public Roads
Allen Rd	Public Roads
Allen St	Public Roads
Allens Ave	Public Roads
Allenstown Rd	Public Roads
Alley Ln	Public Roads
Alliance Way	Public Roads
Allison St	Public Roads
Almeda Ln	Public Roads
Alpenhof Rd	Public Roads
Als Ave	Public Roads
Alton Woods Dr	Public Roads
Amenities Dr	Public Roads

Americana Dr	Public Roads
Ames Dr	Public Roads
Amesbury Rd	Public Roads
Amey Dr	Public Roads
Ammo Ranger Sta	Public Roads
Ammonoosoc Ave	Public Roads
Amos Emery Rd	Public Roads
Amoskeag Rd	Public Roads
Amy Way	Public Roads
Anderson Ave	Public Roads
Andrews Rd	Public Roads
Andy Dr	Public Roads
Angela Way	Public Roads
Ann Logan Cir	Public Roads
Anna Dr	Public Roads
Antell Ter	Public Roads
Antrim Ave	Public Roads
Appaloosa Run	Public Roads
Appalossa Way	Public Roads
Apple Farm Rd	Public Roads
Apple Hill Rd	Public Roads
Apple Tree St	Public Roads
Apple Way	Public Roads
Appleton St	Public Roads
Appletree Ln	Public Roads
April Ave	Public Roads
Arapano Dr	Public Roads
Arbutus Hill Rd	Public Roads
Arch St	Public Roads
Archer Cir	Public Roads
Ardon Dr	Public Roads
Arey Rd	Public Roads

Arlington Ave	Public Roads
Arlington St	Public Roads
Armory Rd	Public Roads
Armour Pl	Public Roads
Arna Ln	Public Roads
Arnold Dr	Public Roads
Arrowhead Point Rd	Public Roads
Arthur Scott Rd	Public Roads
Arthur White Rd	Public Roads
Asa Dr	Public Roads
Asby Rd	Public Roads
Ash Dr	Public Roads
Ash Rd	Public Roads
Ash St	Public Roads
Ashley Dr	Public Roads
Ashram Rd	Public Roads
Aspen Ln	Public Roads
Astor Ct	Public Roads
Astor Ln	Public Roads
Atwood Rd	Public Roads
Auburn St	Public Roads
Audette Rd	Public Roads
Audubon Ln	Public Roads
Auras Way	Public Roads
Autumn Dr	Public Roads
Autumn Ln	Public Roads
Autumn Run	Public Roads
Averill Dr	Public Roads
Avery St	Public Roads
Avery Way	Public Roads
Avon Rd	Public Roads
Avon St	Public Roads

Axle Dr	Public Roads
Axtel Rd	Public Roads
Ayers Island Rd	Public Roads
Ayers Rd	Public Roads
Ayles Ct	Public Roads
Ayling Ln	Public Roads
B Rich Rd	Public Roads
B St	Public Roads
Babb Rd	Public Roads
Babbitt Rd	Public Roads
Bachelor Rd	Public Roads
Back Farm Rd	Public Roads
Back Lake Rd	Public Roads
Back Rd	Public Roads
Bacon Rd	Public Roads
Badger St	Public Roads
Bag Hill Rd	Public Roads
Bailey Ave	Public Roads
Bailey Dr	Public Roads
Bailey Rd	Public Roads
Baileys Lndg	Public Roads
Bainbridge Dr	Public Roads
Baker Dr	Public Roads
Baker Rd	Public Roads
Baker St	Public Roads
Baldwin Ave	Public Roads
Baldwin St	Public Roads
Balsam Dr	Public Roads
Balsam Fir Ln	Public Roads
Balsam Ln	Public Roads
Baptist Hill Rd	Public Roads
Baptist Rd	Public Roads

Barberry Ln	Public Roads
Barderry Ln	Public Roads
Barnett Dr	Public Roads
Barnett Hill	Public Roads
Barrell Ct	Public Roads
Barrett Ave	Public Roads
Barrette Rd	Public Roads
Barrington Rd	Public Roads
Barron Rd	Public Roads
Barrows Mtn Rd	Public Roads
Bartelink Dr	Public Roads
Bartlett Pl	Public Roads
Bartlett St	Public Roads
Bartletts Mtn Path	Public Roads
Barton Rd	Public Roads
Bascom Hill Rd	Public Roads
Bashan Hollow Rd	Public Roads
Basin St	Public Roads
Bast Dr	Public Roads
Batchelder Mill Rd	Public Roads
Batchelder Rd	Public Roads
Batten Rd	Public Roads
Battis Crossing Rd	Public Roads
Battle St	Public Roads
Bay Hill Rd	Public Roads
Bay St	Public Roads
Baybutt Rd	Public Roads
Bayley Ave	Public Roads
Bayview Terrace Rd	Public Roads
Beach Rd	Public Roads
Beachwood Rd	Public Roads
Beacon Ct	Public Roads

Beacon Hill Rd	Public Roads
Beacon St	Public Roads
Beacon Way	Public Roads
Bean Hill Rd	Public Roads
Bean Rd	Public Roads
Bean St	Public Roads
Bear Camp Rd	Public Roads
Bear Hill Pond Rd	Public Roads
Bear Hill Rd	Public Roads
Bear Mountain Rd	Public Roads
Bear Mtn Rd	Public Roads
Bear Rock Rd	Public Roads
Bearce St	Public Roads
Bearlya Rd	Public Roads
Beaton St	Public Roads
Beau Acres Rd	Public Roads
Beauchesne Dr	Public Roads
Beaudet Ln	Public Roads
Beauty Hill Rd	Public Roads
Beaver Brook Dr	Public Roads
Beaver Brook Rec	Public Roads
Beaver Meadow St	Public Roads
Beaver Pond Rd	Public Roads
Beaver St	Public Roads
Beaver Trail	Public Roads
Beaver Way	Public Roads
Beck Rd	Public Roads
Becky Ln	Public Roads
Bee Hole Rd	Public Roads
Beech Hill Rd	Public Roads
Beech St	Public Roads
Beede Dr	Public Roads

Beede Rd	Public Roads
Bela Brook Ln	Public Roads
Bela View Dr	Public Roads
Belabachi Rd	Public Roads
Belfry Ct	Public Roads
Belknap Dr	Public Roads
Bell Hill Rd	Public Roads
Bellarose Rd	Public Roads
Belle Hunt Rd	Public Roads
Bellflower Cir	Public Roads
Belmore Court Dr	Public Roads
Belser Rd	Public Roads
Ben Laing Rd	Public Roads
Bennett Brook Rd	Public Roads
Bennett Hill Rd	Public Roads
Bennetts Ferry Rd	Public Roads
Bent Rd	Public Roads
Bentwood St	Public Roads
Benz Rd	Public Roads
Berea Rd	Public Roads
Berkley St	Public Roads
Berle Dr	Public Roads
Berlin Rd	Public Roads
Bernice St	Public Roads
Berry Farms Rd	Public Roads
Berry Hill Rd	Public Roads
Berry Ln	Public Roads
Berry Pond Rd	Public Roads
Berry Rd	Public Roads
Bert Ln	Public Roads
Bert St	Public Roads
Best Ave	Public Roads

Beth Dr	Public Roads
Bethlehem Rd	Public Roads
Betty Ln	Public Roads
Big Red Aly	Public Roads
Bigelow Rd	Public Roads
Bill Alice Ln	Public Roads
Billbarb Rd	Public Roads
Birch Cir	Public Roads
Birch Ct	Public Roads
Birch Dr	Public Roads
Birch Hill Rd	Public Roads
Birch Ln	Public Roads
Birch Rd	Public Roads
Birch St	Public Roads
Birch Way	Public Roads
Birchcroft Dr	Public Roads
Birchdale Rd	Public Roads
Birches Rd	Public Roads
Birchwood Dr	Public Roads
Bird Rd	Public Roads
Birdrunner Rd	Public Roads
Bishop Brook Rd	Public Roads
Bishop Ln	Public Roads
Bishop St	Public Roads
Bishopsgate	Public Roads
Bison Rd	Public Roads
Bittersweet Ln	Public Roads
Black Bear Trl	Public Roads
Black Hall Rd	Public Roads
Black Hall Spur	Public Roads
Black Hill Ln	Public Roads
Black Hill Rd	Public Roads

Black Velvet Rd	Public Roads
Blackberry Ln	Public Roads
Blackey Rd	Public Roads
Blackman Rd	Public Roads
Blackstone St	Public Roads
Blackwater Dr	Public Roads
Blais Rd	Public Roads
Blake Hill Rd	Public Roads
Blake Rd	Public Roads
Blake St	Public Roads
Blakes Hill Rd	Public Roads
Blakley Farm Rd	Public Roads
Blakley Rd	Public Roads
Blanchard Rd	Public Roads
Blanchard St	Public Roads
Blandin St	Public Roads
Blaney Rd	Public Roads
Blaze Hill Rd	Public Roads
Blevens Dr	Public Roads
Bliss Rd	Public Roads
Blodgett St	Public Roads
Blue Sky Dr	Public Roads
Blue Spruce Cir	Public Roads
Blue Tick Dr	Public Roads
Blueberry Hill Rd	Public Roads
Blueberry Ln	Public Roads
Bluebird Ln	Public Roads
Bluffs Dr	Public Roads
Bo Rd	Public Roads
Boanza Dr	Public Roads
Boat Landing Rd	Public Roads
Bob House Rd	Public Roads

Bobs Dr	Public Roads
Boe Rd	Public Roads
Bog Rd	Public Roads
Bohan St	Public Roads
Boise Cascade Rd	Public Roads
Boismont Dr	Public Roads
Bombay Rd	Public Roads
Bona Vista Dr	Public Roads
Bond St	Public Roads
Bonney St	Public Roads
Boot Jack Rd	Public Roads
Bootjack Rd	Public Roads
Boots Hollow Dr	Public Roads
Borough Rd	Public Roads
Boscawen Park n Ride 525	Public Roads
Boscawen Roundabout	Public Roads
Boudle Rd	Public Roads
Boudreau Ln	Public Roads
Boulder Cir	Public Roads
Bourque Rd	Public Roads
Bouton St	Public Roads
Bow 505 Turn Around	Public Roads
Bow Bog Rd	Public Roads
Bow Center Rd	Public Roads
Bow Lake Rd	Public Roads
Bow Ln	Public Roads
Bow St	Public Roads
Boxwood Ln	Public Roads
Boyce Ln	Public Roads
Boyce Rd	Public Roads
Boynton Ln	Public Roads
Boynton Rd	Public Roads

Brackett Ln	Public Roads
Bradhill Ln	Public Roads
Bradley Rd	Public Roads
Bradley St	Public Roads
Brady Ln	Public Roads
Brae Ln	Public Roads
Braeside Rd	Public Roads
Braley Hill Rd	Public Roads
Braley Rd	Public Roads
Branch Londonderry Tpk West	Public Roads
Branch Londonderry Tpke E	Public Roads
Branch Londonderry Tpke W	Public Roads
Branch Tpke	Public Roads
Brandy Ln	Public Roads
Brandywine Dr	Public Roads
Bray Hill Rd	Public Roads
Break O Day Dr	Public Roads
Breezy Rd	Public Roads
Brenda Ct	Public Roads
Bressette Rd	Public Roads
Briar Bush Rd	Public Roads
Briar Hill Rd	Public Roads
Briar Rd	Public Roads
Briarwood Dr	Public Roads
Brick House Rd	Public Roads
Brickett Hill Rd	Public Roads
Brickyard Rd	Public Roads
Bridge Rd	Public Roads
Bridge St	Public Roads
Bridge St Cir	Public Roads
Bridgewater Hill Rd	Public Roads
Bridle Ln	Public Roads

Bridle Path Trl	Public Roads
Brimstone Hill Rd	Public Roads
Brinns Way	Public Roads
Bristol Hill Rd	Public Roads
Britt Rd	Public Roads
Broad Ave	Public Roads
Broad Cove Dr	Public Roads
Broad Cove Rd	Public Roads
Broadway	Public Roads
Broadway St	Public Roads
Brockway Rd	Public Roads
Brodeur St	Public Roads
Broken Bridge Rd	Public Roads
Broken Ground Dr	Public Roads
Bronson St	Public Roads
Brook Rd	Public Roads
Brook St	Public Roads
Brookfield Dr	Public Roads
Brooklyn St	Public Roads
Brooks Park Rd	Public Roads
Brookside Dr	Public Roads
Brookside Ter	Public Roads
Brookside West Rd	Public Roads
Brookwood Dr	Public Roads
Brookwood Park Rd	Public Roads
Broomstick Hill Rd	Public Roads
Brown Brook Cir	Public Roads
Brown Hill Rd	Public Roads
Brown Rd	Public Roads
Brown St	Public Roads
Browns Beach Rd	Public Roads
Bruins Ln	Public Roads

Brunt Ave	Public Roads
Brush Rd	Public Roads
Brushwood Dr	Public Roads
Bryan St	Public Roads
Bryant Rd	Public Roads
Buck St	Public Roads
Buckingham Dr	Public Roads
Buckingham Ln	Public Roads
Buffalo Farm Rd	Public Roads
Buffalo Rd	Public Roads
Builders Sq	Public Roads
Bullard Dr	Public Roads
Bumfagon Rd	Public Roads
Bumscuff St	Public Roads
Bungy Rd	Public Roads
Bunker Hill Rd	Public Roads
Bunker Hill St	Public Roads
Bunker Ln	Public Roads
Bunnell Rd	Public Roads
Bunny Ln	Public Roads
Buppa Hill Ln	Public Roads
Burbank Dr	Public Roads
Burbank Way	Public Roads
Burleigh Hill Rd	Public Roads
Burleigh Mountain Rd	Public Roads
Burnham Ln	Public Roads
Burns Ave	Public Roads
Burns Hill Rd	Public Roads
Burns Lake Rd	Public Roads
Burns Rd	Public Roads
Burnside St	Public Roads
Burnt Hill Rd	Public Roads

Burt Hollow Rd	Public Roads
Bush Ave	Public Roads
Bush Rd	Public Roads
Business Park Dr	Public Roads
Business Park Ln	Public Roads
Butlers Pit Rd	Public Roads
Butterfield Ln	Public Roads
Button Rd	Public Roads
Buxton Pl	Public Roads
Buzwell Corner Rd	Public Roads
Bye St	Public Roads
C St	Public Roads
Cabernet Dr	Public Roads
Cabin Dr	Public Roads
Cabn Fever Ln	Public Roads
Cabot Trl	Public Roads
Calef Hill Rd	Public Roads
Calef Hwy	Public Roads
Calef Island Rd	Public Roads
Call Rd	Public Roads
Call St	Public Roads
Callaway Dr	Public Roads
Calley Rd	Public Roads
Cambridge Dr	Public Roads
Cambridge St	Public Roads
Camelia Ave	Public Roads
Camelot Ct	Public Roads
Camp Akita Rd	Public Roads
Camp Lee Rd	Public Roads
Camp Onaway Rd	Public Roads
Campbell Dr	Public Roads
Campbell St	Public Roads

Campground	Public Roads
Campground	Public Roads
Campground Rd	Public Roads
Campion Cir	Public Roads
Campus Dr	Public Roads
Canal St	Public Roads
Candia Rd	Public Roads
Candle Shores Ln	Public Roads
Canoe Dr	Public Roads
Canterbury Park n Ride Interstate 93 N	Public Roads
Canterbury Rd	Public Roads
Canterbury Rest Area Interstate 93 N	Public Roads
Cantin Ridge Dr	Public Roads
Canton Cir	Public Roads
Capitol St	Public Roads
Cardigan Dr	Public Roads
Cardinal Dr	Public Roads
Cardinal Ln	Public Roads
Cardinal Rd	Public Roads
Cardinal Way	Public Roads
Carleton Hill Rd	Public Roads
Carleton Rd	Public Roads
Carleton St	Public Roads
Carlton Hill Rd	Public Roads
Carol Ct	Public Roads
Carol Ln	Public Roads
Caron Dr	Public Roads
Carpenter Rd	Public Roads
Carpenter St	Public Roads
Carr Ave	Public Roads
Carr Rd	Public Roads
Carr St	Public Roads

Carriage Hill Rd	Public Roads
Carriage Rd	Public Roads
Carriage Way	Public Roads
Carrier Dr	Public Roads
Carter Hill Rd	Public Roads
Carter Mountain Rd	Public Roads
Carter Rd	Public Roads
Carter St	Public Roads
Carters Cut Rd	Public Roads
Cartland Rd	Public Roads
Carver St	Public Roads
Cascade Campground	Public Roads
Casey Dr	Public Roads
Casey Ln	Public Roads
Casey Way	Public Roads
Casino Rd	Public Roads
Cass Mill Rd	Public Roads
Cass Rd	Public Roads
Castle Ln	Public Roads
Castle Rock Dr	Public Roads
Caswell Ln	Public Roads
Cat Hole	Public Roads
Cataldo Rd	Public Roads
Catamount Hill Dr	Public Roads
Catamount Rd	Public Roads
Cate Rd	Public Roads
Cates Hill Rd	Public Roads
Cathedral Rd	Public Roads
Causeway St	Public Roads
Caveney Dr	Public Roads
Ccc Cir	Public Roads
Cedar Cir	Public Roads

Cedar Ct	Public Roads
Cedar Dr	Public Roads
Cedar Ln	Public Roads
Cedar Pond Dr	Public Roads
Cedar St	Public Roads
Cedar Stream Rd	Public Roads
Cedric Rd	Public Roads
Celtic St	Public Roads
Cemetery Rd	Public Roads
Cemetery St	Public Roads
Centennial Dr	Public Roads
Center Rd	Public Roads
Center St	Public Roads
Centerwood Dr	Public Roads
Central Ave	Public Roads
Central Park Dr	Public Roads
Central Sq	Public Roads
Central Square	Public Roads
Central St	Public Roads
Centre St	Public Roads
Chablis Ter	Public Roads
Chads Rd	Public Roads
Chadwick Hill Rd	Public Roads
Challenge Course Rd	Public Roads
Chamberlain Cir	Public Roads
Chambers Cir	Public Roads
Chambers Rd	Public Roads
Champion Rd	Public Roads
Chance Pond Rd	Public Roads
Chancellor Dr	Public Roads
Chandler Ledges Rd	Public Roads
Chandler St	Public Roads

Chapel Ln	Public Roads
Chapel St	Public Roads
Chapman St	Public Roads
Charles Doe Dr	Public Roads
Charles St	Public Roads
Charlies Ln	Public Roads
Chase Dr	Public Roads
Chase Farm Rd	Public Roads
Chase Hill Rd	Public Roads
Chase Rd	Public Roads
Chase St	Public Roads
Checkerberry Ln	Public Roads
Cheese Factory Rd	Public Roads
Cheever Rd	Public Roads
Chelle Rd	Public Roads
Chellie Ln	Public Roads
Chelsea Dr	Public Roads
Chenell Dr	Public Roads
Cheney St	Public Roads
Cherry Mountain Pl	Public Roads
Cherry St	Public Roads
Cherry Valley Rd	Public Roads
Cheryl Dr	Public Roads
Chesley Rd	Public Roads
Chesley St	Public Roads
Chester Rd	Public Roads
Chester Tpk	Public Roads
Chester Tpke	Public Roads
Chesterfield Dr	Public Roads
Chestnut Ct	Public Roads
Chestnut Dr	Public Roads
Chestnut Pasture Rd	Public Roads

Chestnut Pond Rd	Public Roads
Chestnut St	Public Roads
Chichester Rd	Public Roads
Chickering Ct	Public Roads
Chickwolnepy Rd	Public Roads
Chicory Ct	Public Roads
Chipper Ln	Public Roads
Chiswick Ave	Public Roads
Chocorua Ct	Public Roads
Chocorua Hill Rd	Public Roads
Choquette Dr	Public Roads
Christian Ave	Public Roads
Christina Dr	Public Roads
Christine Lake Rd	Public Roads
Christopher Robert Dr	Public Roads
Christy Ln	Public Roads
Church Hill Rd	Public Roads
Church Ln	Public Roads
Church Rd	Public Roads
Church St	Public Roads
Cider Ferry Rd	Public Roads
Cider Rd	Public Roads
Cidermill Dr	Public Roads
Cilley Rd	Public Roads
Circle Dr	Public Roads
Circuit St	Public Roads
Citizens Rd	Public Roads
City Access Rd	Public Roads
Clark Ave	Public Roads
Clark Rd	Public Roads
Clark St	Public Roads
Clark Trl Rd	Public Roads

Clarke Ln	Public Roads
Clarke St	Public Roads
Clarksville Pond Rd	Public Roads
Clay St	Public Roads
Clayton Dr	Public Roads
Clear Stream Loop	Public Roads
Clearview Dr	Public Roads
Clearwood Ln	Public Roads
Clematis Cir	Public Roads
Clement Rd	Public Roads
Cleos Way	Public Roads
Cleveland Ave	Public Roads
Clifford Farm Rd	Public Roads
Clinton St	Public Roads
Closton Hill Rd	Public Roads
Clough Hill Rd	Public Roads
Clough Mill Rd	Public Roads
Clough Rd	Public Roads
Clough Sanborn Hill Rd	Public Roads
Clough St	Public Roads
Clough Tavern Rd	Public Roads
Cloutier Dr	Public Roads
Cloutiers Loop	Public Roads
Clover Ct	Public Roads
Clover Ridge Rd	Public Roads
Clyde Smith Rd	Public Roads
Coach Rd	Public Roads
Coaster Rd	Public Roads
Cob Rd	Public Roads
Coffeetown Rd	Public Roads
Cofran Ave	Public Roads
Cogswell Hill Rd	Public Roads

Cogswell Rd	Public Roads
Colburn Ave	Public Roads
Colburn Rd	Public Roads
Colby Ave	Public Roads
Colby Ln	Public Roads
Colby Rd	Public Roads
Colby St	Public Roads
Cold Spring Rd	Public Roads
Cold Springs Rd	Public Roads
Cole Hill Rd	Public Roads
Cole Ln	Public Roads
Cole Rd	Public Roads
Colebrook Rd	Public Roads
Coleman Dr	Public Roads
Coleman Rd	Public Roads
College Dr	Public Roads
College Park Dr	Public Roads
Collins St	Public Roads
Colonial Dr	Public Roads
Colonial Haven	Public Roads
Colonial Ter	Public Roads
Colony Ln	Public Roads
Colony Rd	Public Roads
Columbia Rd	Public Roads
Columbine Pl	Public Roads
Columbus Ave	Public Roads
Comeau Dr	Public Roads
Commanders Helm	Public Roads
Commerce Dr	Public Roads
Commerce St	Public Roads
Commerce Way	Public Roads
Commercial St	Public Roads

Community Camp Rd	Public Roads
Community Dr	Public Roads
Companion Rd	Public Roads
Conant Dr	Public Roads
Concord Hill Rd	Public Roads
Concord Rd	Public Roads
Concord St	Public Roads
Concord Stage Rd	Public Roads
Congress St	Public Roads
Connemara Dr	Public Roads
Constitution Ave	Public Roads
Cook Hill Rd	Public Roads
Cook Rd	Public Roads
Coolidge Ave	Public Roads
Coolidge Way	Public Roads
Coolidge Woods Rd	Public Roads
Coons Point Rd	Public Roads
Cooper Hill Rd	Public Roads
Cooper Rd	Public Roads
Cooperative Way	Public Roads
Copatch Rd	Public Roads
Copeland Rd	Public Roads
Copperline Rd	Public Roads
Copperville Rd	Public Roads
Coral St	Public Roads
Corbett Rd	Public Roads
Corey Rd	Public Roads
Coreys Mobile Home Park	Public Roads
Corkum Rd	Public Roads
Corliss Hill Rd	Public Roads
Corliss Rd	Public Roads
Corn Hill Rd	Public Roads

Cornell St	Public Roads
Cornerstone Rd	Public Roads
Corriveau Dr	Public Roads
Corser Brook Rd	Public Roads
Cortland Cir	Public Roads
Cote St	Public Roads
Cotnoir Dr	Public Roads
Cottage City Rd	Public Roads
Cottage Ct	Public Roads
Cottage Ln	Public Roads
Cottage Pl	Public Roads
Cottage Rd	Public Roads
Cottage St	Public Roads
Cotton Rd	Public Roads
Country Cabin Ln	Public Roads
Country Club Ln	Public Roads
Country Ln	Public Roads
Country Rd	Public Roads
Country Rose Ln	Public Roads
Country View Dr	Public Roads
Country Village Rd	Public Roads
Countryside Blvd	Public Roads
Coupal Meadows Rd	Public Roads
Court St	Public Roads
Couture Rd	Public Roads
Cove Rd	Public Roads
Coventry Rd	Public Roads
Cow Path	Public Roads
Coy Rd	Public Roads
Craggy Rd	Public Roads
Cram Rd	Public Roads
Cranberry Bog Rd	Public Roads

Crane Rd	Public Roads
Crane St	Public Roads
Cranmore Ridge Dr	Public Roads
Crawford Ln	Public Roads
Crawford Rd	Public Roads
Crawford St	Public Roads
Cream Hill Rd	Public Roads
Creamery Rd	Public Roads
Creampoke Rd	Public Roads
Cree Rd	Public Roads
Cremin St	Public Roads
Crescent Dr	Public Roads
Crescent St	Public Roads
Crestwood Dr	Public Roads
Cricket Hill Way	Public Roads
Cricket Ln	Public Roads
Critchett Rd	Public Roads
Crittle Hill Rd	Public Roads
Crockett Dr	Public Roads
Crodem Dr	Public Roads
Cronin Rd	Public Roads
Crosby St	Public Roads
Cross Brook Rd	Public Roads
Cross Country Rd	Public Roads
Cross Mill Rd	Public Roads
Cross Rd	Public Roads
Cross St	Public Roads
Croteau Rd	Public Roads
Crow Hill St	Public Roads
Crow Rd	Public Roads
Crowell Rd	Public Roads
Crowley Ct	Public Roads

Crystal Ave	Public Roads
Crystal Ln	Public Roads
Cubb St	Public Roads
Cumberland St	Public Roads
Cummings Hill Rd	Public Roads
Currier Dr	Public Roads
Currier Rd	Public Roads
Curtice Ave	Public Roads
Curtis Ct	Public Roads
Curtisville Rd	Public Roads
Cypress St	Public Roads
Cyr Dr	Public Roads
Cyr Dr Ext	Public Roads
Cyr Rd	Public Roads
D Amante Dr	Public Roads
D St	Public Roads
Dade Dr	Public Roads
Daisy Ln	Public Roads
Dakin St	Public Roads
Dale Rd	Public Roads
Daley Rd	Public Roads
Dalton Rd	Public Roads
Dame Rd	Public Roads
Dana Ct	Public Roads
Dana Hill Rd	Public Roads
Danforth Brook Rd	Public Roads
Danforth Rd	Public Roads
Daniel Dr	Public Roads
Daniel Webster Dr	Public Roads
Daniel Webster Hwy	Public Roads
Daniell Point Rd	Public Roads
Daniell St	Public Roads

Danielle Way	Public Roads
Daniels Rd	Public Roads
Daphne Ct	Public Roads
Dare Dr	Public Roads
Dartmouth College Hwy	Public Roads
Dartmouth St	Public Roads
Darwin Dr	Public Roads
Dashingdown Rd	Public Roads
Davenport Rd	Public Roads
Davis Ln	Public Roads
Davis Rd	Public Roads
Davis St	Public Roads
Davlynn Dr	Public Roads
Dawn Dr	Public Roads
Deadwater Loop Rd	Public Roads
Deadwater Rd	Public Roads
Dean Ave	Public Roads
Dean Brook Dr	Public Roads
Dean Jeffries Ln	Public Roads
Dearborn Rd	Public Roads
Dearborn St	Public Roads
Debbie St	Public Roads
Deep Woods Dr	Public Roads
Deer Ct	Public Roads
Deer Ln	Public Roads
Deer Meadow Rd	Public Roads
Deer Run	Public Roads
Deer Run Rd	Public Roads
Deer St	Public Roads
Deer Track Ln	Public Roads
Deerfield Rd	Public Roads
Deerpath Ln	Public Roads

Defosses Ln	Public Roads
Delano Rd	Public Roads
Deline Rd	Public Roads
Dells Rd	Public Roads
Delta Dr	Public Roads
Demeritt Ave	Public Roads
Dempsey Dr	Public Roads
Denis Dr	Public Roads
Depot Ln	Public Roads
Depot Rd	Public Roads
Depot St	Public Roads
Deschene Rd	Public Roads
Destiny Way	Public Roads
Devilsteps Rd	Public Roads
Devinne Dr	Public Roads
Devonshire Dr	Public Roads
Devyn Dr	Public Roads
Deware Dr	Public Roads
Dewey Farm Rd	Public Roads
Dewey Hill Rd	Public Roads
Diamond Hill Rd	Public Roads
Diamond Pond Rd	Public Roads
Diamond Rd	Public Roads
Diana Rd	Public Roads
Diane Ave	Public Roads
Dicandra Dr	Public Roads
Dickenson Cir	Public Roads
Dicks Way	Public Roads
Dinan Dr	Public Roads
Dinardi Rd	Public Roads
Dingman Rd	Public Roads
Disdam Rd	Public Roads

District No Five Rd	Public Roads
Dix St	Public Roads
Dixon Ave	Public Roads
Dixon Hill Rd	Public Roads
Dock Ln	Public Roads
Dodge Rd	Public Roads
Dogwood Ter	Public Roads
Dolan St	Public Roads
Dolloff Brook Rd	Public Roads
Dolloff Dr	Public Roads
Dolly Rd	Public Roads
Dolphin St	Public Roads
Domenic Dr	Public Roads
Dominique Dr	Public Roads
Don Gerry Rd	Public Roads
Donald Dr	Public Roads
Donald St	Public Roads
Donkin Hill Rd	Public Roads
Donna Dr	Public Roads
Donna Ln	Public Roads
Donovan Rd	Public Roads
Donovan St	Public Roads
Doris Dr	Public Roads
Doris St	Public Roads
Dorman Rd	Public Roads
Dorothys Way	Public Roads
Dorsey Rd	Public Roads
Dotties Ln	Public Roads
Doucette Dr	Public Roads
Douglas Ave	Public Roads
Dove St	Public Roads
Dover Rd	Public Roads

Dover St	Public Roads
Dow Rd	Public Roads
Dowboro Rd	Public Roads
Downing St	Public Roads
Downs Way	Public Roads
Dowst Rd	Public Roads
Dr Chase	Public Roads
Dr Childs Rd	Public Roads
Drake Dr	Public Roads
Drake Hill Rd	Public Roads
Drake Rd	Public Roads
Dred Cir	Public Roads
Drew St	Public Roads
Drews Lndg	Public Roads
Driscoll Dr	Public Roads
Driveway A032	Public Roads
Driveway A045	Public Roads
Driveway A092	Public Roads
Driveway A121	Public Roads
Driveway A135	Public Roads
Driveway A143	Public Roads
Driveway A166	Public Roads
Driveway A229	Public Roads
Driveway A238	Public Roads
Driveway A251	Public Roads
Driveway A254	Public Roads
Driveway A259	Public Roads
Driveway A269	Public Roads
Driveway A295	Public Roads
Driveway A310	Public Roads
Driveway A321	Public Roads
Driveway A339	Public Roads

Driveway A368	Public Roads
Driveway A377	Public Roads
Driveway A488	Public Roads
Drolet Rd	Public Roads
Drouin Dr	Public Roads
Dublin Ln	Public Roads
Dubois Ave	Public Roads
Dubreuil Rd	Public Roads
Dudley Dr	Public Roads
Dudley Hill Rd	Public Roads
Dudley Rd	Public Roads
Duffy St	Public Roads
Duke Ln	Public Roads
Dump Rd	Public Roads
Dunbarton Center Rd	Public Roads
Dunbarton Rd	Public Roads
Dunklee Rd	Public Roads
Dunklee St	Public Roads
Dunlop Dr	Public Roads
Dunnmoore Dr	Public Roads
Dupont Rd	Public Roads
Durgin Dr	Public Roads
Durgin Rd	Public Roads
Dustin Dr	Public Roads
Dustin Rd	Public Roads
Duston Dr	Public Roads
Dusty Dr	Public Roads
Dutile Rd	Public Roads

Site 102.45(d) Part 1: Parks and Other Recreation Areas

Name	Type of Scenic Resource
------	-------------------------

Airport Marsh Waterfowl Management Area	Access Sites to Public Waters
Akers Pond Boat Ramp	Access Sites to Public Waters
Archery Pond	Access Sites to Public Waters
Avery-Crouse Beach	Access Sites to Public Waters
Ayers Island Hydroelectric Station	Access Sites to Public Waters
Ayers Island Hydroelectric Station	Access Sites to Public Waters
Bean Nature Conservation Area	Access Sites to Public Waters
Bear Brook State Park	Access Sites to Public Waters
Bear Brook State Park	Access Sites to Public Waters
Bear Brook State Park	Access Sites to Public Waters
Boat Landing	Access Sites to Public Waters
Boat Landing	Access Sites to Public Waters
Boat Launch	Access Sites to Public Waters
Boat Ramp	Access Sites to Public Waters
Bofinger Conservation Area	Access Sites to Public Waters
Boscawen Town Park	Access Sites to Public Waters
Buck Street Dam	Access Sites to Public Waters
Cartop Access	Access Sites to Public Waters
Cartop Access	Access Sites to Public Waters
Clarksville Pond Cartop Facility	Access Sites to Public Waters
Coleman State Park	Access Sites to Public Waters
Connecticut River Streambank Access	Access Sites to Public Waters
Coolidge Woods Cartop Facility	Access Sites to Public Waters
Coolidge Woods Cartop Facility II	Access Sites to Public Waters
Cummings Beach	Access Sites to Public Waters
Exchange Street Site	Access Sites to Public Waters
Ferry Street Boat Ramp	Access Sites to Public Waters
Forest Lake State Park	Access Sites to Public Waters
Franklin High - Lower Field	Access Sites to Public Waters
Franklin Public Boat Ramp	Access Sites to Public Waters
Freese's Pond Dam	Access Sites to Public Waters
Griffin Beach	Access Sites to Public Waters

Groveton Covered Bridge	Access Sites to Public Waters
Healy Park	Access Sites to Public Waters
Hebron Memorial Beach	Access Sites to Public Waters
Hoit Road Wildlife Area	Access Sites to Public Waters
Institute Drive Boat Ramp	Access Sites to Public Waters
Intervale Road Canoe Access	Access Sites to Public Waters
Janice Peaslee Bridge	Access Sites to Public Waters
Kiwanis River Front Park	Access Sites to Public Waters
Lagace Beach	Access Sites to Public Waters
Ledgeview Overlook	Access Sites to Public Waters
Martin Meadow Pond Launch	Access Sites to Public Waters
Merrimack County Boat Launching Facility	Access Sites to Public Waters
Merrimack R. Outdoor Education & Conservation Area	Access Sites to Public Waters
Merrimack River (East Concord)	Access Sites to Public Waters
Millsfield Pond Boat Launch	Access Sites to Public Waters
Mooney Clark Landing	Access Sites to Public Waters
Morono Park Trail	Access Sites to Public Waters
Needleshop Brook Recreation Area	Access Sites to Public Waters
New Boston Road Bridge	Access Sites to Public Waters
Newfound Lake Boat Access Facility	Access Sites to Public Waters
NH Tech Site	Access Sites to Public Waters
On Shore Fishing	Access Sites to Public Waters
Paradise Point	Access Sites to Public Waters
Pemigewasset River Access	Access Sites to Public Waters
Pemigewasset River Cartop Facility	Access Sites to Public Waters
Penacook St. Boat Ramp	Access Sites to Public Waters
Pondicherry Wildlife Refuge	Access Sites to Public Waters
Pondicherry Wildlife Refuge	Access Sites to Public Waters
Pontook Recreational Facility	Access Sites to Public Waters
Profile Falls Recreation Area	Access Sites to Public Waters
PSNH Boat Launch	Access Sites to Public Waters

Riverland Conservation Area	Access Sites to Public Waters
Riverside Park	Access Sites to Public Waters
Rolfe Canal Public Boat Ramp	Access Sites to Public Waters
Salmon Brook Station Ramp	Access Sites to Public Waters
Sawhegenet Falls Rec. Area	Access Sites to Public Waters
Shaw Cove Boat Launch	Access Sites to Public Waters
Soucook River Access	Access Sites to Public Waters
Soucook River Shorebank Access	Access Sites to Public Waters
State Forest Nursery	Access Sites to Public Waters
Terrill Park	Access Sites to Public Waters
Town Beach	Access Sites to Public Waters
Trestle View Park	Access Sites to Public Waters
Turtletown Pond	Access Sites to Public Waters
Webster Lake WMA	Access Sites to Public Waters
Wellington State Park Beach	Access Sites to Public Waters
100 Acre Woods Campground	Recreation Inventory: Points
Allenstown Elementary School	Recreation Inventory: Points
Allenstown Upper Elementary School	Recreation Inventory: Points
Ames Brook Campground	Recreation Inventory: Points
Apple Hill Campground	Recreation Inventory: Points
Balsams Grand Resort Golf Club	Recreation Inventory: Points
Beaver Meadow Golf Course	Recreation Inventory: Points
Beaver Trails Campground	Recreation Inventory: Points
Bessie C. Rowell School	Recreation Inventory: Points
Bethlehem Country Club	Recreation Inventory: Points
Bethlehem Elementary School	Recreation Inventory: Points
Bethlehem Swimming Pool	Recreation Inventory: Points
Bicentennial Field	Recreation Inventory: Points
Bicentennial Square	Recreation Inventory: Points
Big Rock Campground	Recreation Inventory: Points
Bishop Brady High School	Recreation Inventory: Points
Boat Launch - Akers Pond	Recreation Inventory: Points

Boat Launch Burns Pond	Recreation Inventory: Points
Boat Launch Christine Lake	Recreation Inventory: Points
Boat Launch Forest Lake	Recreation Inventory: Points
Boat Launch Martin Meadow Pond	Recreation Inventory: Points
Boat Launch Mirror Lake	Recreation Inventory: Points
Boat Launch Moose Pond	Recreation Inventory: Points
Boat Ramp - Merrimack River	Recreation Inventory: Points
Boscawen Sportsmen's Club	Recreation Inventory: Points
Boscawen Town Park	Recreation Inventory: Points
Bow Bog Brook	Recreation Inventory: Points
Bow Elementary School	Recreation Inventory: Points
Bow Memorial School	Recreation Inventory: Points
Bristol Community Center	Recreation Inventory: Points
Broken Ground School	Recreation Inventory: Points
Burns Lake Campground	Recreation Inventory: Points
Camp Berea	Recreation Inventory: Points
Camp Onaway	Recreation Inventory: Points
Camp Onway	Recreation Inventory: Points
Camp Pasquaney	Recreation Inventory: Points
Camp Shiloh	Recreation Inventory: Points
Camp Spaulding	Recreation Inventory: Points
Candia Moore School	Recreation Inventory: Points
Canterbury Center	Recreation Inventory: Points
Canterbury Elementary School	Recreation Inventory: Points
Canterbury Woods Country Club	Recreation Inventory: Points
Cascade Campground	Recreation Inventory: Points
Cheer Center	Recreation Inventory: Points
Childs Park	Recreation Inventory: Points
Circle 9 Ranch	Recreation Inventory: Points
Colonel Town Community Camp	Recreation Inventory: Points
Community Basketball Courts & Rink	Recreation Inventory: Points
Community Center	Recreation Inventory: Points

Community Park	Recreation Inventory: Points
Community School	Recreation Inventory: Points
Conant School	Recreation Inventory: Points
Concord Country Club	Recreation Inventory: Points
Concord Historic District	Recreation Inventory: Points
Cornerstone Christian Academy	Recreation Inventory: Points
Dame School	Recreation Inventory: Points
Daniel Park	Recreation Inventory: Points
David N. Allen Park	Recreation Inventory: Points
Davidsons Countryside Campground	Recreation Inventory: Points
Deerfield Community School	Recreation Inventory: Points
Deerfield Fairgrounds	Recreation Inventory: Points
Den Brae Golf Course	Recreation Inventory: Points
DeVost Marina	Recreation Inventory: Points
Dewey School	Recreation Inventory: Points
Dixville Flume	Recreation Inventory: Points
Donati Memorial Field	Recreation Inventory: Points
Doyen Park	Recreation Inventory: Points
Eagle Square	Recreation Inventory: Points
Eastman School	Recreation Inventory: Points
Eaton Property	Recreation Inventory: Points
Elementary School	Recreation Inventory: Points
Elementary School Playground	Recreation Inventory: Points
Elm Street Community Fields	Recreation Inventory: Points
Epsom Grammar School	Recreation Inventory: Points
Epsom Valley Campground	Recreation Inventory: Points
Everett Arena	Recreation Inventory: Points
Fitts Museum	Recreation Inventory: Points
Fletcher-Murphy Playlot	Recreation Inventory: Points
Forest Hills	Recreation Inventory: Points
Fort Jefferson Campground	Recreation Inventory: Points
Franklin High School	Recreation Inventory: Points

Franklin Middle School	Recreation Inventory: Points
Franklin Public Boat Ramp	Recreation Inventory: Points
Funspot	Recreation Inventory: Points
Garrison Park	Recreation Inventory: Points
Garrison School	Recreation Inventory: Points
Grappone Park	Recreation Inventory: Points
Griffin Beach	Recreation Inventory: Points
Groveton Fish & Game Club	Recreation Inventory: Points
Groveton School	Recreation Inventory: Points
Heights Playground	Recreation Inventory: Points
Hidden Valley Campground	Recreation Inventory: Points
Highland Mountain Bike Park	Recreation Inventory: Points
Hillcrest Campground	Recreation Inventory: Points
Holderness School	Recreation Inventory: Points
Home Health Field	Recreation Inventory: Points
Hopkinton Fairgrounds	Recreation Inventory: Points
Horse Cemetery	Recreation Inventory: Points
Intervale Road Canoe Access	Recreation Inventory: Points
Israel River Campground	Recreation Inventory: Points
Jellystone Park Camp	Recreation Inventory: Points
Kelley Park	Recreation Inventory: Points
Kimball Playground	Recreation Inventory: Points
Kimball School	Recreation Inventory: Points
Kiwanis Picnic Area	Recreation Inventory: Points
Korean Veterans Park	Recreation Inventory: Points
Laconia White Birch Camp	Recreation Inventory: Points
Lagace Beach	Recreation Inventory: Points
Lancaster Fairgrounds	Recreation Inventory: Points
Lazy River Family Campground	Recreation Inventory: Points
Liha	Recreation Inventory: Points
Littleton High School	Recreation Inventory: Points
Lochmere Golf & Country Club	Recreation Inventory: Points

Log Haven Campground	Recreation Inventory: Points
Loudon Country Club, Inc.	Recreation Inventory: Points
Maplewood Golf Club	Recreation Inventory: Points
Mary Baker Eddy Site	Recreation Inventory: Points
Mast Way Elementary School	Recreation Inventory: Points
McKee Square	Recreation Inventory: Points
Memorial Field	Recreation Inventory: Points
Memorial Jr. High School	Recreation Inventory: Points
Merrill Park	Recreation Inventory: Points
Merrimack County Boat Launch	Recreation Inventory: Points
Merrimack Valley High School	Recreation Inventory: Points
Michael Burke Memorial Forest	Recreation Inventory: Points
Mildred Lakeway Elementary School	Recreation Inventory: Points
Mojalaki Country Club	Recreation Inventory: Points
Mountain Lake Campground	Recreation Inventory: Points
Mountain View House	Recreation Inventory: Points
Mt. Eustis Ski Area	Recreation Inventory: Points
Municipal Field	Recreation Inventory: Points
Municipal Pool and Recr. Center	Recreation Inventory: Points
New Hampton School	Recreation Inventory: Points
Newfound Hills Campground	Recreation Inventory: Points
Newfound Lake 1	Recreation Inventory: Points
Newfound Marina	Recreation Inventory: Points
Newfound Regional High School	Recreation Inventory: Points
North State Street Common	Recreation Inventory: Points
Northfield Park	Recreation Inventory: Points
Northfield School	Recreation Inventory: Points
Northwood Golf Driving Range	Recreation Inventory: Points
Notchview RV Resort	Recreation Inventory: Points
Nottingham Elementary School	Recreation Inventory: Points
Nottingham Square	Recreation Inventory: Points
Oak Hill Golf Course	Recreation Inventory: Points

Odell Park	Recreation Inventory: Points
Old Bales Property	Recreation Inventory: Points
Paul Smith School	Recreation Inventory: Points
Pembroke Academy	Recreation Inventory: Points
Pembroke Hill School	Recreation Inventory: Points
Pembroke Park	Recreation Inventory: Points
Pemigewasset Fish & Game	Recreation Inventory: Points
Pemigewasset River	Recreation Inventory: Points
Picnic/Rest Area	Recreation Inventory: Points
Pine Haven Boys Center	Recreation Inventory: Points
Pines Community Center	Recreation Inventory: Points
Plausawa Valley Country Club	Recreation Inventory: Points
Plymouth State University	Recreation Inventory: Points
Plymouth Town Common	Recreation Inventory: Points
Proulx Community Center	Recreation Inventory: Points
Public School	Recreation Inventory: Points
Public Service Boat Ramp	Recreation Inventory: Points
Recreation Center	Recreation Inventory: Points
Reed Playlot	Recreation Inventory: Points
Remich Park	Recreation Inventory: Points
Riverside Speedway	Recreation Inventory: Points
Roadside Park	Recreation Inventory: Points
Rogers Campground	Recreation Inventory: Points
Rolfe Park	Recreation Inventory: Points
Rollins Park	Recreation Inventory: Points
Ross Martin Park	Recreation Inventory: Points
Route 106 Race Park	Recreation Inventory: Points
Rumford School	Recreation Inventory: Points
Rundlett Jr High School	Recreation Inventory: Points
Saddleback Campground	Recreation Inventory: Points
Saint Bani School	Recreation Inventory: Points
Sanel Field	Recreation Inventory: Points

Sargent Park	Recreation Inventory: Points
Scenic Overlook	Recreation Inventory: Points
School Field	Recreation Inventory: Points
Silver Lake Park Campground	Recreation Inventory: Points
Six Gun City	Recreation Inventory: Points
Slim Baker Area	Recreation Inventory: Points
Snow Shoe Club	Recreation Inventory: Points
Snowy Mountain Campground	Recreation Inventory: Points
Southern NH Snow Slickers	Recreation Inventory: Points
Spaulding Inn & Club	Recreation Inventory: Points
Spaulding Youth Center	Recreation Inventory: Points
Spruce Cone Camps	Recreation Inventory: Points
Squam Bridge Landing	Recreation Inventory: Points
St Johns Regional School	Recreation Inventory: Points
St Paul's School	Recreation Inventory: Points
Stone Park	Recreation Inventory: Points
Sunset Mountain Fish & Game Club	Recreation Inventory: Points
Tennis Courts	Recreation Inventory: Points
Terrill Park	Recreation Inventory: Points
The Lancaster School	Recreation Inventory: Points
The Lantern Resort	Recreation Inventory: Points
The Pines	Recreation Inventory: Points
The Pond	Recreation Inventory: Points
The Waumbek Country Club	Recreation Inventory: Points
The White Mountain School	Recreation Inventory: Points
Thompson Playlot	Recreation Inventory: Points
Thousand Acres Family Campground	Recreation Inventory: Points
Three Rivers School	Recreation Inventory: Points
Tilton School	Recreation Inventory: Points
Town Beach	Recreation Inventory: Points
Town Common	Recreation Inventory: Points
Town Park	Recreation Inventory: Points

Town Playground	Recreation Inventory: Points
Town Pound	Recreation Inventory: Points
Town Skating Rink	Recreation Inventory: Points
Town Tennis Courts	Recreation Inventory: Points
Townsend Training Farm	Recreation Inventory: Points
Turtle Pond	Recreation Inventory: Points
Twin Mountain KOA	Recreation Inventory: Points
Twin Oaks Campground	Recreation Inventory: Points
Vietnam Veteran Park	Recreation Inventory: Points
Village School	Recreation Inventory: Points
Vocational Technical College	Recreation Inventory: Points
Walker School	Recreation Inventory: Points
Wanakee Methodist Camp	Recreation Inventory: Points
Webster Park	Recreation Inventory: Points
Weirs Beach Go-Kart Track	Recreation Inventory: Points
West Street Playlot	Recreation Inventory: Points
White Building Playground	Recreation Inventory: Points
White Farm Site	Recreation Inventory: Points
White Mountain Country Club	Recreation Inventory: Points
White Mts. Regional High School	Recreation Inventory: Points
White Park	Recreation Inventory: Points
Whitefield Recreation Area	Recreation Inventory: Points
Whitten Street Park	Recreation Inventory: Points
William A. Maxfield Monument	Recreation Inventory: Points
Winnisquam Regional School	Recreation Inventory: Points
Woody Glen	Recreation Inventory: Points
Abbott State Forest	Recreation Inventory: Polygon
Agnew State Forest	Recreation Inventory: Polygon
Alfred Jenness Natural Area	Recreation Inventory: Polygon
Allenstown Town Forest	Recreation Inventory: Polygon
Alvah Chase Town Forest	Recreation Inventory: Polygon
Ammonoosuc River State Forest	Recreation Inventory: Polygon

Appalachian Mountain Club	Recreation Inventory: Polygon
Arthur Chase Town Forest	Recreation Inventory: Polygon
Audubon Society of NH Headquarters	Recreation Inventory: Polygon
Ayers State Forest	Recreation Inventory: Polygon
Bear Brook State Park	Recreation Inventory: Polygon
Birchdale Road - Town Forest	Recreation Inventory: Polygon
Blackwater Reservoir	Recreation Inventory: Polygon
Bog Hill Town Forest	Recreation Inventory: Polygon
Booth Property	Recreation Inventory: Polygon
Boscawen Town Forest	Recreation Inventory: Polygon
Bow School Wildlife	Recreation Inventory: Polygon
Bragfield Pond	Recreation Inventory: Polygon
Brennick Lochmere Archeologic Site	Recreation Inventory: Polygon
Bretzfelder Memorial Park	Recreation Inventory: Polygon
Broken Ground Area	Recreation Inventory: Polygon
Brown Wildlife Management Area	Recreation Inventory: Polygon
Brundage Forest	Recreation Inventory: Polygon
Cabot Memorial Forest	Recreation Inventory: Polygon
Canterbury Shaker Village	Recreation Inventory: Polygon
Cape Horn State Forest	Recreation Inventory: Polygon
Cardigan Mountain State Forest	Recreation Inventory: Polygon
Carpenter Memorial Park	Recreation Inventory: Polygon
Catterall Forest	Recreation Inventory: Polygon
Charles L. Bean Sanctuary	Recreation Inventory: Polygon
Chemung State Forest	Recreation Inventory: Polygon
Church Hill Wildlife Mgt. Area	Recreation Inventory: Polygon
Cilley State Forest	Recreation Inventory: Polygon
Cockermouth Forest	Recreation Inventory: Polygon
Coe-Brown Academy Forestry Lots	Recreation Inventory: Polygon
Coleman State Forest	Recreation Inventory: Polygon
Concord Wildlife Management Area	Recreation Inventory: Polygon
Conservation Center	Recreation Inventory: Polygon

Conservation Commission Lands	Recreation Inventory: Polygon
Conservation Easement 2	Recreation Inventory: Polygon
Contoocook River	Recreation Inventory: Polygon
Contoocook River Park	Recreation Inventory: Polygon
Corey Wildlife Management Area	Recreation Inventory: Polygon
D & M Park	Recreation Inventory: Polygon
Daniel Webster Birthplace	Recreation Inventory: Polygon
Desloirier Lot	Recreation Inventory: Polygon
Devil's Slide State Forest	Recreation Inventory: Polygon
District 5 State Forest	Recreation Inventory: Polygon
Dixville Notch State Park	Recreation Inventory: Polygon
Dole's Marsh Wildlife Mgt. Area	Recreation Inventory: Polygon
Dowst-Cate Town Forest	Recreation Inventory: Polygon
Dustin Barker Town Forest	Recreation Inventory: Polygon
Forest Lake State Park	Recreation Inventory: Polygon
Forest Peter Wildlife Mgt Area	Recreation Inventory: Polygon
Fort Hill Wildlife Management Area	Recreation Inventory: Polygon
Franconia Notch State Park	Recreation Inventory: Polygon
Franklin Falls Reservoir	Recreation Inventory: Polygon
General Bartlett Memorial Forest	Recreation Inventory: Polygon
George Duncan State Forest	Recreation Inventory: Polygon
Gile State Forest	Recreation Inventory: Polygon
Giles Pasture Lot	Recreation Inventory: Polygon
Gray Wildlife Management Area	Recreation Inventory: Polygon
Hamlin Property	Recreation Inventory: Polygon
Hannah Dustin Memorial	Recreation Inventory: Polygon
Hanson Park	Recreation Inventory: Polygon
Hart Town Forest	Recreation Inventory: Polygon
Hirst/Brockway Marsh Wildlife Area	Recreation Inventory: Polygon
Hoit Road Marsh Wildlife Mgmt. Area	Recreation Inventory: Polygon
Hoit Road Marsh Wildlife Mgt. Area	Recreation Inventory: Polygon
Hopkinton-Everett Reservoir	Recreation Inventory: Polygon

Hothole Pond	Recreation Inventory: Polygon
Hurlburt Swamp Preserve	Recreation Inventory: Polygon
Huston-Morgan State Forest	Recreation Inventory: Polygon
J. Tyson Stokes Memorial Forest	Recreation Inventory: Polygon
Jericho Lake Park	Recreation Inventory: Polygon
Kauffmann Forest	Recreation Inventory: Polygon
Kearsarge Mountain State Forest	Recreation Inventory: Polygon
Kearsarge Mountain Wildlife Area	Recreation Inventory: Polygon
Kilburn Crags	Recreation Inventory: Polygon
Kimball Pond Conservation Area	Recreation Inventory: Polygon
Lake Francis	Recreation Inventory: Polygon
Lake Francis State Park	Recreation Inventory: Polygon
Lamontagne Wildlife Management Area	Recreation Inventory: Polygon
Lancaster Town Forest	Recreation Inventory: Polygon
Lehtiven Park & Mast Yard	Recreation Inventory: Polygon
Lindsay Conservation Area	Recreation Inventory: Polygon
Little League Field	Recreation Inventory: Polygon
Manchester Waterworks	Recreation Inventory: Polygon
Mary & Quentin Hutchins Forest	Recreation Inventory: Polygon
Mast Yard State Forest	Recreation Inventory: Polygon
McCabe Lot/Town Forest	Recreation Inventory: Polygon
McNeil Woods	Recreation Inventory: Polygon
Meredith Town Forest	Recreation Inventory: Polygon
Merrill Park	Recreation Inventory: Polygon
Merrimack River Access	Recreation Inventory: Polygon
Merrimack River State Forest	Recreation Inventory: Polygon
Milan Hill State Park	Recreation Inventory: Polygon
Milan Town Forest	Recreation Inventory: Polygon
Morono/Sewall's Falls Park	Recreation Inventory: Polygon
Nash Stream Forest	Recreation Inventory: Polygon
New Hampton-Bristol Scenic Easement	Recreation Inventory: Polygon
New Hampton Conservation Park	Recreation Inventory: Polygon

New Hampton Fish Hatchery	Recreation Inventory: Polygon
Northwood Meadows State Park	Recreation Inventory: Polygon
Northwood Parsonage Lot	Recreation Inventory: Polygon
Northwood School Lot	Recreation Inventory: Polygon
Nottingham State Forest	Recreation Inventory: Polygon
Oak Hill	Recreation Inventory: Polygon
Oak Hill Fire Tower	Recreation Inventory: Polygon
Open Land 1	Recreation Inventory: Polygon
Outdoor Education Area	Recreation Inventory: Polygon
Pages Corner State Forest	Recreation Inventory: Polygon
Paradise Point	Recreation Inventory: Polygon
Paul P. Mock Memorial Forest	Recreation Inventory: Polygon
Pawtuckaway State Park	Recreation Inventory: Polygon
Percy State Forest	Recreation Inventory: Polygon
Pillsbury Lake Hunting Preserve	Recreation Inventory: Polygon
Pondicherry Wildlife Refuge	Recreation Inventory: Polygon
Pontook Reservoir	Recreation Inventory: Polygon
Prescott State Forest	Recreation Inventory: Polygon
Prince Pasture	Recreation Inventory: Polygon
Profile Recreational Trail	Recreation Inventory: Polygon
Riley Property	Recreation Inventory: Polygon
Rolfe Park	Recreation Inventory: Polygon
Rumney Town Forest	Recreation Inventory: Polygon
Russell-Shea State Forest	Recreation Inventory: Polygon
Sahegenet Falls Recreation Area	Recreation Inventory: Polygon
Samuel Myron Chase Forest/Sanctuary	Recreation Inventory: Polygon
Scenic Easement	Recreation Inventory: Polygon
Schuett Conservation Area	Recreation Inventory: Polygon
Scribner-Fellows State Forest	Recreation Inventory: Polygon
Second College Grant	Recreation Inventory: Polygon
Sewalls Falls	Recreation Inventory: Polygon
Shaker State Forest	Recreation Inventory: Polygon

Sky Pond State Forest	Recreation Inventory: Polygon
Soucook River State Forest	Recreation Inventory: Polygon
Spender Meadow Nature Trails	Recreation Inventory: Polygon
Squam Lakes Science Center	Recreation Inventory: Polygon
State Forest Nursery	Recreation Inventory: Polygon
Stevens Memorial Forest	Recreation Inventory: Polygon
Storer Tract/Town Forest	Recreation Inventory: Polygon
Strawberry Hill State Forest	Recreation Inventory: Polygon
Sugar Hill State Forest	Recreation Inventory: Polygon
Sugar Hill Town Forest	Recreation Inventory: Polygon
Taylor State Forest	Recreation Inventory: Polygon
The Arch	Recreation Inventory: Polygon
The Dells	Recreation Inventory: Polygon
The Rocks	Recreation Inventory: Polygon
Thirteen Mile Wood Scenic Easement	Recreation Inventory: Polygon
Town Forest	Recreation Inventory: Polygon
Town Forest - Conserv. Deed	Recreation Inventory: Polygon
Town Forest - Winslow Lot	Recreation Inventory: Polygon
Town Woodland	Recreation Inventory: Polygon
Tricky Lot	Recreation Inventory: Polygon
Twin Mountain Fish Hatchery	Recreation Inventory: Polygon
Twitchell Environmental Study Area	Recreation Inventory: Polygon
Umbagog National Wildlife Refuge	Recreation Inventory: Polygon
Umbagog State Park	Recreation Inventory: Polygon
UNH-Saddleback Mtn. Natural Area	Recreation Inventory: Polygon
UNH Recreational Area	Recreation Inventory: Polygon
UNH Saddleback Mt. Lot Natural Area	Recreation Inventory: Polygon
Upton-Morgan State Forest	Recreation Inventory: Polygon
Veterans Memorial Recreation Area	Recreation Inventory: Polygon
Wade State Forest	Recreation Inventory: Polygon
Walker Forest	Recreation Inventory: Polygon
Walker State Forest	Recreation Inventory: Polygon

Webster Lake Wildlife Mgmt. Area	Recreation Inventory: Polygon
Webster Park	Recreation Inventory: Polygon
Weeks State Park	Recreation Inventory: Polygon
Weir Road Trail	Recreation Inventory: Polygon
Wellington State Park	Recreation Inventory: Polygon
Wells Town Forest	Recreation Inventory: Polygon
Welton Falls State Forest	Recreation Inventory: Polygon
West Iron Works Road State Forest	Recreation Inventory: Polygon
White Farm Site	Recreation Inventory: Polygon
White Farm State Forest	Recreation Inventory: Polygon
White Mountain National Forest	Recreation Inventory: Polygon
White Sands	Recreation Inventory: Polygon
Whittemore Town Forest	Recreation Inventory: Polygon
Wildlife Management Area	Recreation Inventory: Polygon
Woodman State Forest	Recreation Inventory: Polygon

Site 102.45(d) Part 2: Recreation Trails

Name	Type of Scenic Resource
Alpina Trail	Recreational Trails
Ann's Bump	Recreational Trails
Arbutus Hill Pond Trail	Recreational Trails
Arthur Chase Lot Trail	Recreational Trails
Back 80 Loop	Recreational Trails
Back 80 Trail	Recreational Trails
Batchelder Mill Road	Recreational Trails
Batchelder Mill Road Trails	Recreational Trails
Bear Brook Lower	Recreational Trails
Bear Brook Trail	Recreational Trails
Bear Brook Upper	Recreational Trails
Bear Hill	Recreational Trails
Bear Hill Trail	Recreational Trails

Bear Trail	Recreational Trails
Beaver Pond	Recreational Trails
Beaver Trail	Recreational Trails
Berry Trail	Recreational Trails
Big Bear	Recreational Trails
Big loop trail	Recreational Trails
Black Gum Trail	Recreational Trails
Blackhall	Recreational Trails
Bob's Way	Recreational Trails
Bobcat	Recreational Trails
Bobo Crow Trail	Recreational Trails
Boulder Trail	Recreational Trails
Boundary Trail	Recreational Trails
Boy Mountain Path	Recreational Trails
Bravo Trail	Recreational Trails
Broken Boulder	Recreational Trails
Broken Boulder Trail	Recreational Trails
Brook Road	Recreational Trails
Buford's Way	Recreational Trails
Bunnell Notch Trail	Recreational Trails
Carr Ridge	Recreational Trails
Carter Hill Farm Trails	Recreational Trails
Cascade	Recreational Trails
Cascade Brook Trail	Recreational Trails
Catamount	Recreational Trails
Catamount West	Recreational Trails
Causeway Trail	Recreational Trails
Cherry Mountain Trail	Recreational Trails
Chipmunk	Recreational Trails
Clark Trail	Recreational Trails
Cohos Trail	Recreational Trails
Cohos Trail-Corridor 5	Recreational Trails

Cohos Trail (proposed)	Recreational Trails
Connector Trail	Recreational Trails
Contoocook River Park Trails	Recreational Trails
Corridor 5	Recreational Trails
Crawford-Ridgepole Trail	Recreational Trails
Curtisville Rd	Recreational Trails
Curtisville Road Trails	Recreational Trails
Dancing Bear Trail	Recreational Trails
Devil's Den Trail	Recreational Trails
Diamond Peaks Trail	Recreational Trails
Dimond Hill Farm Trail	Recreational Trails
Dowst-Cate Forest Trail	Recreational Trails
Elwell Trail	Recreational Trails
Elwell Trail - Oregon Mtn. Spu	Recreational Trails
Erik's Way	Recreational Trails
Farm	Recreational Trails
Ferret	Recreational Trails
Forest Floor Trail	Recreational Trails
Franconia Brook Trail	Recreational Trails
Franconia Ridge Trail	Recreational Trails
Gale River Trail	Recreational Trails
Garfield Ridge Trail	Recreational Trails
Garfield Trail	Recreational Trails
Goose Pond Trail	Recreational Trails
Great Brook Trail	Recreational Trails
Great Hill Loop	Recreational Trails
Great Turkey Pond Trail	Recreational Trails
Greenleaf Trail	Recreational Trails
Gully Trail	Recreational Trails
Hal Graham Trail	Recreational Trails
Hall Mountain	Recreational Trails
Hall Mountain (Single)	Recreational Trails

Hall Mountain Trail	Recreational Trails
Hayes Marsh Trail	Recreational Trails
Hedgehog Ledge	Recreational Trails
Hemlock	Recreational Trails
High Trail	Recreational Trails
Hoit Marsh Trail	Recreational Trails
Holt's Revenge	Recreational Trails
Journey Trail	Recreational Trails
Kelsea Notch Ext.	Recreational Trails
Kilkenny Ridge Trail	Recreational Trails
Krupa Loop	Recreational Trails
Lake Loop	Recreational Trails
Lake to Ledges Trail	Recreational Trails
Lane	Recreational Trails
Ledges Pass	Recreational Trails
Lincoln Trail	Recreational Trails
Line Trail	Recreational Trails
Little Bear	Recreational Trails
Lost	Recreational Trails
Lost Trail	Recreational Trails
Lost Trail extension	Recreational Trails
Low Trail	Recreational Trails
Lower Sentinel Pine	Recreational Trails
Lower Trail	Recreational Trails
Lowland	Recreational Trails
Lull Loop	Recreational Trails
Lynx	Recreational Trails
Manning Trail	Recreational Trails
Martha's Mile	Recreational Trails
Mast Yard Trails	Recreational Trails
Merrill Park Trail	Recreational Trails
Middle mt. trail	Recreational Trails

Mill Brook Trail	Recreational Trails
Moose Road	Recreational Trails
Morono Park Trails	Recreational Trails
Mount Cabot Trail	Recreational Trails
Mount Morgan Spur	Recreational Trails
Mount Morgan Trail	Recreational Trails
Mt. Cabot/Kilkenny Ridge Trail	Recreational Trails
Murray Bluff	Recreational Trails
NALMC	Recreational Trails
New Hampshire Heritage Trail	Recreational Trails
North Artery Trail	Recreational Trails
North mt. trail	Recreational Trails
North Twin Trail	Recreational Trails
O-Reilly-Fleetham Trail	Recreational Trails
Oak Hill Trail	Recreational Trails
Old Bridle Path	Recreational Trails
Old Dicey Rd.	Recreational Trails
Old Orchard Trail	Recreational Trails
One Mile	Recreational Trails
One Mile Road	Recreational Trails
Ovenbird Scuttle	Recreational Trails
Owl's Head Trail	Recreational Trails
Percy Peaks Trail	Recreational Trails
Perimeter Trail	Recreational Trails
Pipeline Trail	Recreational Trails
Pit Way	Recreational Trails
Pitch Pine	Recreational Trails
Podunk Road	Recreational Trails
Power Line Trail	Recreational Trails
Prescott Trail	Recreational Trails
private	Recreational Trails
Red Loop Trail	Recreational Trails

Rene's Maze	Recreational Trails
Ride-the-Wilds	Recreational Trails
Riley Trails	Recreational Trails
Rolfe Park Trails	Recreational Trails
Rollins Trail	Recreational Trails
Ron's Way	Recreational Trails
Round pond trail	Recreational Trails
Salt Lick	Recreational Trails
Salt Lick Trail	Recreational Trails
Sanguinary Ridge Trail	Recreational Trails
Sentinel Pine	Recreational Trails
Sentinel Pine Trail	Recreational Trails
Sewall's Falls Trails	Recreational Trails
Short Cut	Recreational Trails
Skookumchuck Trail	Recreational Trails
Skyland Trail	Recreational Trails
Snowmobile Route	Recreational Trails
South Percy Peak Trail	Recreational Trails
South ridge trail	Recreational Trails
Spear's Park Trails	Recreational Trails
SPNHF Trails	Recreational Trails
Starr King Trail	Recreational Trails
Steer Brook Trail	Recreational Trails
Sugarloaf Trail	Recreational Trails
Sunapee-Ragged-Kearsarge Green	Recreational Trails
Sutherland Trail	Recreational Trails
Table Rock Trail	Recreational Trails
Terry's Turn	Recreational Trails
This Is My Song Trail	Recreational Trails
Tobey's Trail	Recreational Trails
Tower trail	Recreational Trails
Tower Trail	Recreational Trails

Town Forest Trails	Recreational Trails
Trio Ponds Trail	Recreational Trails
unknown	Recreational Trails
Unknown Pond Trail	Recreational Trails
Unnamed Connection	Recreational Trails
Upper Black Gum Trail	Recreational Trails
Upper Trail	Recreational Trails
Virginia Hutton Trail	Recreational Trails
Vista Way	Recreational Trails
Vistamount Trail	Recreational Trails
Wayne Elliott Trail	Recreational Trails
Weir Road	Recreational Trails
Weir Road Side Trail	Recreational Trails
West Milan Trail	Recreational Trails
Westside Trail	Recreational Trails
White Trail	Recreational Trails
Winant Park Trails	Recreational Trails
Woodbury Outlook Loop	Recreational Trails
Woodland Trail	Recreational Trails
Woods Trail	Recreational Trails
Yellow Loop Trail	Recreational Trails
York Pond Trail	Recreational Trails

Site 102.45(e): Historic Sites

Name	Type of Scenic Resource
Aldrich, Benjamin, Homestead	Listed Historic Resource: Polygons
Blossom Hill and Calvary Cemeteries	Listed Historic Resource: Polygons
Bridges, H. Styles, House	Listed Historic Resource: Polygons
Burt--Cheney Farm	Listed Historic Resource: Polygons
Canterbury Shaker Village	Listed Historic Resource: Polygons
Concord Civic District	Listed Historic Resource: Polygons

Dimond Hill Farm	Listed Historic Resource: Polygons
Downtown Concord Historic District	Listed Historic Resource: Polygons
Downtown Concord Historic District	Listed Historic Resource: Polygons
Franklin Falls Historic District	Listed Historic Resource: Polygons
Hebron Village Historic District	Listed Historic Resource: Polygons
Hersey Farms Historic District	Listed Historic Resource: Polygons
Mountain View House	Listed Historic Resource: Polygons
Murray Hill Summer Home District	Listed Historic Resource: Polygons
Old North Cemetery	Listed Historic Resource: Polygons
Page Belting Company Mills	Listed Historic Resource: Polygons
Pittsfield Center Historic District	Listed Historic Resource: Polygons
Pleasant View Home	Listed Historic Resource: Polygons
Rocks Estate	Listed Historic Resource: Polygons
Rocks Estate	Listed Historic Resource: Polygons
Sanbornton Square Historic District	Listed Historic Resource: Polygons
Sanbornton Square Historic District	Listed Historic Resource: Polygons
Sanbornton Square Historic District	Listed Historic Resource: Polygons
Waumbek Cottages Historic District	Listed Historic Resource: Polygons
White Farm	Listed Historic Resource: Polygons
White Farm	Listed Historic Resource: Polygons
White Park	Listed Historic Resource: Polygons
2 1/2 Beacon Street	Listed Historic Resource: Points
Boscawen Academy and Much-I-Do-Hose House	Listed Historic Resource: Points
Boscawen Public Library	Listed Historic Resource: Points
Central Square Historic District	Listed Historic Resource: Points
Chamberlin House	Listed Historic Resource: Points
Crippen, Henry J., House	Listed Historic Resource: Points
Downing, Lewis, Jr., House	Listed Historic Resource: Points
Eagle Hotel	Listed Historic Resource: Points
Endicott Hotel	Listed Historic Resource: Points
Farrington House	Listed Historic Resource: Points
First Congregational Church of Boscawen	Listed Historic Resource: Points

First Free Will Baptist Church in Meredith	Listed Historic Resource: Points
Foster, Reuben, House and Cleaves, Perley, House	Listed Historic Resource: Points
Garland Mill	Listed Historic Resource: Points
Gordon--Nash Library	Listed Historic Resource: Points
Hall Memorial Library	Listed Historic Resource: Points
Hall, Charles S., House	Listed Historic Resource: Points
Indian Stream Schoolhouse	Listed Historic Resource: Points
Littleton Town Building	Listed Historic Resource: Points
Merrimack County Bank	Listed Historic Resource: Points
Merrimack County Courthouse	Listed Historic Resource: Points
Millville School	Listed Historic Resource: Points
Minot--Sleeper Library	Listed Historic Resource: Points
Mooney, Washington, House	Listed Historic Resource: Points
Morrill--Lassonde House	Listed Historic Resource: Points
Mount Orne Covered Bridge	Listed Historic Resource: Points
New Hampshire Savings Bank Building	Listed Historic Resource: Points
New Hampton Community Church	Listed Historic Resource: Points
New Hampton Town House	Listed Historic Resource: Points
Old Post Office	Listed Historic Resource: Points
Pierce, Franklin, House	Listed Historic Resource: Points
Rolfe Barn	Listed Historic Resource: Points
Rollins, Gov. Frank West, House	Listed Historic Resource: Points
Stark Covered Bridge	Listed Historic Resource: Points
Tilton Downtown Historic District	Listed Historic Resource: Points
Tilton Island Park Bridge	Listed Historic Resource: Points
Tuttle, Donald D., House	Listed Historic Resource: Points
Upham--Walker House	Listed Historic Resource: Points
US Post Office--Lancaster Main	Listed Historic Resource: Points
Webster Congregational Church	Listed Historic Resource: Points
Weeks Estate	Listed Historic Resource: Points
Weeks, William Dennis, Memorial Library	Listed Historic Resource: Points

"1, 2, 3 and 6 Verville	Potential Historic Resources
Road, 15 and 24	Potential Historic Resources
Deerfield Rd", Allenstown	Potential Historic Resources
100 Deerfield Road, Allenstown	Potential Historic Resources
105 Wing Road, Allenstown	Potential Historic Resources
141-138 Wing Road, Allenstown	Potential Historic Resources
181 Wing Road, Allenstown	Potential Historic Resources
206 Deerfield Road, Allenstown	Potential Historic Resources
207 Deerfield Road, Allenstown	Potential Historic Resources
210 Wing Road, Allenstown	Potential Historic Resources
225 Deerfield Road, Allenstown	Potential Historic Resources
228 Deerfield Road, Allenstown	Potential Historic Resources
234 Deerfield Road, Allenstown	Potential Historic Resources
266 Deerfield Road, Allenstown	Potential Historic Resources
274 Deerfield Road, Allenstown	Potential Historic Resources
288 Deerfield Road, Allenstown	Potential Historic Resources
298 Deerfield Road, Allenstown	Potential Historic Resources
334 Deerfield Road, Allenstown	Potential Historic Resources
36 Mount Delight Road, Allenstown	Potential Historic Resources
368 Deerfield Road, Allenstown	Potential Historic Resources
402 Deerfield Road, Allenstown	Potential Historic Resources
415 Deerfield Road, Allenstown	Potential Historic Resources
484 Deerfield Road, Allenstown	Potential Historic Resources
90 Wing Road, Allenstown	Potential Historic Resources
92 New Rye Road, Allenstown	Potential Historic Resources
Deerfield Road, Allenstown	Potential Historic Resources
Deerfield Road, Allenstown	Potential Historic Resources
Deerfield Road, Allenstown	Potential Historic Resources
Deerfield Road, Allenstown	Potential Historic Resources
off Deerfield Road, Allenstown	Potential Historic Resources
off Deerfield Road, Allenstown	Potential Historic Resources
"Podunk Road, corner of	Potential Historic Resources

Deerfield Road", Allenstown	Potential Historic Resources
116 Highland Street, Ashland	Potential Historic Resources
121 Highland Street, Ashland	Potential Historic Resources
16 and 20 North Avenue, Ashland	Potential Historic Resources
167 Highland Street, Ashland	Potential Historic Resources
21 Hillside Avenue, Ashland	Potential Historic Resources
21 Hillside Avenue, Ashland	Potential Historic Resources
25 Winona Road, Ashland	Potential Historic Resources
27 and 47 Cedar Lane, Ashland	Potential Historic Resources
34, 44 West Street, Ashland	Potential Historic Resources
39 Winona Road, Ashland	Potential Historic Resources
48 North Ashland Road, Ashland	Potential Historic Resources
"49, 61, 69 Thompson	Potential Historic Resources
Street", Ashland	Potential Historic Resources
5 Defosses Lane, Ashland	Potential Historic Resources
59 West Street, Ashland	Potential Historic Resources
"6 West Street, 3 Hillside	Potential Historic Resources
Avenue, 4 North Avenue", Ashland	Potential Historic Resources
"83-102 Depot Street, 15-	Potential Historic Resources
44 Collins Street", Ashland	Potential Historic Resources
95 Highland Street, Ashland	Potential Historic Resources
99 Main Street, Ashland	Potential Historic Resources
Main Street, Ashland	Potential Historic Resources
No address identified, Ashland	Potential Historic Resources
No address identified, Ashland	Potential Historic Resources
No address identified, Ashland	Potential Historic Resources
No address identified, Ashland	Potential Historic Resources
No address identified, Ashland	Potential Historic Resources
No address identified, Ashland	Potential Historic Resources
Pemigawasset River, Ashland	Potential Historic Resources
"Route 3 over	Potential Historic Resources
Pemigewasset River", Ashland	Potential Historic Resources

"Winter St, Mill St, Depot St Glove St., Church St., School St., Hill St., Spring St., Summer St., Prospect St., Highland St. (part), Murray St., Elm St., Carr Ave, Washington St., South side of Winona Road,	Potential Historic Resources
Reed St., Ames Dr., Cottage St., Cottage Pl.,", Ashland	Potential Historic Resources
"106 Whitefield Road/NH	Potential Historic Resources
116", Bethlehem	Potential Historic Resources
"1108 Main Street, 1071	Potential Historic Resources
Main, 1000 Main", Bethlehem	Potential Historic Resources
"111 Whitefield Road/NH	Potential Historic Resources
116", Bethlehem	Potential Historic Resources
1161 Main Street/US 302, Bethlehem	Potential Historic Resources
1214 Main Street/US 302, Bethlehem	Potential Historic Resources
1224 Main Street/US 302, Bethlehem	Potential Historic Resources
1225 Main Street /US 302, Bethlehem	Potential Historic Resources
124 Brook Road, Bethlehem	Potential Historic Resources
125 Cherry Valley Road, Bethlehem	Potential Historic Resources
126 Cherry Valley Road, Bethlehem	Potential Historic Resources
1267 Cherry Valley Road, Bethlehem	Potential Historic Resources
1267 Main Street/US 302, Bethlehem	Potential Historic Resources
1268 Main Street/US 302, Bethlehem	Potential Historic Resources
1293 Main Street/US 302, Bethlehem	Potential Historic Resources
1298 Main Street/US 302, Bethlehem	Potential Historic Resources
1298 Main Street/US 302, Bethlehem	Potential Historic Resources
1379-1574 Main Street, Bethlehem	Potential Historic Resources
138 Guider Road, Bethlehem	Potential Historic Resources
1425 Cherry Valley Road, Bethlehem	Potential Historic Resources
1452 Prospect Street, Bethlehem	Potential Historic Resources
1505 Prospect Street, Bethlehem	Potential Historic Resources
1530 Prospect Street, Bethlehem	Potential Historic Resources
154 Guider Lane, Bethlehem	Potential Historic Resources
154 South Road, Bethlehem	Potential Historic Resources

158 Blaney Road, Bethlehem	Potential Historic Resources
1637 Main Street, Bethlehem	Potential Historic Resources
164 South Road, Bethlehem	Potential Historic Resources
184 Oxbow Drive, Bethlehem	Potential Historic Resources
192 Blaney Road, Bethlehem	Potential Historic Resources
212 South Road, Bethlehem	Potential Historic Resources
"240 Valley View Lane and	Potential Historic Resources
169 Valley View Lane", Bethlehem	Potential Historic Resources
"25 Blaney Road/corner of	Potential Historic Resources
Brook Road", Bethlehem	Potential Historic Resources
25 Hazen Road, Bethlehem	Potential Historic Resources
269 South Road, Bethlehem	Potential Historic Resources
2691 Main Street/US 302, Bethlehem	Potential Historic Resources
"32-100 Miller's Run, 70-	Potential Historic Resources
164 Rock's Edge Road", Bethlehem	Potential Historic Resources
327 South Road, Bethlehem	Potential Historic Resources
370 Cherry Valley Road, Bethlehem	Potential Historic Resources
371 Cherry Valley Road, Bethlehem	Potential Historic Resources
42 Sawmill Road, Bethlehem	Potential Historic Resources
422 South Road, Bethlehem	Potential Historic Resources
424 Cherry Valley Road, Bethlehem	Potential Historic Resources
48 Reardon Road, Bethlehem	Potential Historic Resources
488 Brook Road, Bethlehem	Potential Historic Resources
504 Railroad Street, Bethlehem	Potential Historic Resources
574 Brook Road, Bethlehem	Potential Historic Resources
585 Brook Road, Bethlehem	Potential Historic Resources
624 Brook Road, Bethlehem	Potential Historic Resources
633 Blaney Road, Bethlehem	Potential Historic Resources
635 Blaney Road, Bethlehem	Potential Historic Resources
711 Main Street/US 302, Bethlehem	Potential Historic Resources
74 Cherry Valley Road, Bethlehem	Potential Historic Resources
745 Main Street/US 302, Bethlehem	Potential Historic Resources

791 Cherry Valley Road, Bethlehem	Potential Historic Resources
791 Main Street/US 302, Bethlehem	Potential Historic Resources
80 Guider Lane, Bethlehem	Potential Historic Resources
818 Whitefield Road, Bethlehem	Potential Historic Resources
86 Cleos Way, Bethlehem	Potential Historic Resources
887 Main Street/US 302, Bethlehem	Potential Historic Resources
905 Main Street/US 302, Bethlehem	Potential Historic Resources
908 Main Street/US 302, Bethlehem	Potential Historic Resources
953 Cherry Valley Road, Bethlehem	Potential Historic Resources
Brook Road, Bethlehem	Potential Historic Resources
"Lyon's Road-425 Cherry Valley Road", Bethlehem	Potential Historic Resources
Main Street/US 302, Christmas Lane, Glessner Road, Bethlehem	Potential Historic Resources
"Prospect Street over Amonoosuc River", Bethlehem	Potential Historic Resources
Route 302/Brook Road, Bethlehem	Potential Historic Resources
Sawmill Road, Bethlehem	Potential Historic Resources
"302-326 Daniel Webster Highway/U.S. Route 3", Boscawen	Potential Historic Resources
"405 Daniel Webster Highway/U.S. Route 3", Boscawen	Potential Historic Resources
"425 Daniel Webster Highway", Boscawen	Potential Historic Resources
"451, 459 Daniel Webster Highway/U.S. Route 3", Boscawen	Potential Historic Resources
Daniel Webster Highway, Boscawen	Potential Historic Resources
No address identified, Boscawen	Potential Historic Resources
No address identified, Boscawen	Potential Historic Resources
No address identified, Boscawen	Potential Historic Resources
No address identified, Boscawen	Potential Historic Resources
No address identified, Boscawen	Potential Historic Resources

1 Danforth Brook, Bristol	Potential Historic Resources
101 Schofield Road, Bristol	Potential Historic Resources
"105 and 150 Barron	Potential Historic Resources
Road, 3939 and 3795 River Road", Bristol	Potential Historic Resources
109 Danforth Brook Road, Bristol	Potential Historic Resources
1151 Summer St/NH 104, Bristol	Potential Historic Resources
1245 Peaked Hill, Bristol	Potential Historic Resources
1311 Peaked Hill, Bristol	Potential Historic Resources
1333 Peaked Hill Road, Bristol	Potential Historic Resources
1388 Peaked Hill Road, Bristol	Potential Historic Resources
155 New Chester Mountain Road, Bristol	Potential Historic Resources
1567 Summer St/NH 104, Bristol	Potential Historic Resources
165 Schaefer Road, Bristol	Potential Historic Resources
165 South Main St/NH 3A, Bristol	Potential Historic Resources
171 Jeffers Road, Bristol	Potential Historic Resources
"1725 Summer Street/NH	Potential Historic Resources
104", Bristol	Potential Historic Resources
18 Briar Hill Road, Bristol	Potential Historic Resources
180 Benz Road, Bristol	Potential Historic Resources
"200-306 Summer	Potential Historic Resources
Street/Route 104", Bristol	Potential Historic Resources
211 Peaked Hill, Bristol	Potential Historic Resources
22 Nyberg Road, Bristol	Potential Historic Resources
22 Remick Road, Bristol	Potential Historic Resources
225 Danforth Brook Road, Bristol	Potential Historic Resources
240 Hall Road, Bristol	Potential Historic Resources
272 Peaked Hill Road, Bristol	Potential Historic Resources
30 Huckins Drive, Bristol	Potential Historic Resources
30 Peaked Hill Road, Bristol	Potential Historic Resources
301 Danforth Brook Road, Bristol	Potential Historic Resources
301 New Chester Mountain Road, Bristol	Potential Historic Resources
305 Peaked Hill Road, Bristol	Potential Historic Resources

33 Jeffers Road, Bristol	Potential Historic Resources
331 Danforth Brook Road, Bristol	Potential Historic Resources
336 Summer Street, 12 and 26 Meadow Lane, Bristol	Potential Historic Resources
"355 Summer Street/NH	Potential Historic Resources
104", Bristol	Potential Historic Resources
3770 River Road, Bristol	Potential Historic Resources
3860 River Road, Bristol	Potential Historic Resources
39 Briar Hill Road, Bristol	Potential Historic Resources
4071, 4185 River Road, Bristol	Potential Historic Resources
4200 River Road, Bristol	Potential Historic Resources
425 Hall Road, Bristol	Potential Historic Resources
435 South Main St/NH 3A, Bristol	Potential Historic Resources
44 Towne Road, Bristol	Potential Historic Resources
4449 River Road, Bristol	Potential Historic Resources
47 Gilpatric Road, 55 Nyberg Road, Bristol	Potential Historic Resources
47 Green Acres Drive, 374 South Main Street, Bristol	Potential Historic Resources
50 Dolloff Road, Bristol	Potential Historic Resources
529 South Main St/NH 3A, Bristol	Potential Historic Resources
55 Green Acres Drive, Bristol	Potential Historic Resources
560 South Main St/NH 3A, Bristol	Potential Historic Resources
60 Peaked Hill, Bristol	Potential Historic Resources
625 South Main St/NH 3A, Bristol	Potential Historic Resources
63 and 33 Hall Road, Bristol	Potential Historic Resources
640-665 Hall Road, Bristol	Potential Historic Resources
65 Danforth Brook, Bristol	Potential Historic Resources
670 South Main St/NH 3A, Bristol	Potential Historic Resources
685 South Main St/NH 3A, Bristol	Potential Historic Resources
710 South Main St/NH 3A, Bristol	Potential Historic Resources
750 South Main St/NH 3A, Bristol	Potential Historic Resources
752 South Main St/NH 3A, Bristol	Potential Historic Resources
780 South Main St/NH 3A, Bristol	Potential Historic Resources

781 South Main St/NH 3A, Bristol	Potential Historic Resources
801 South Main St/NH 3A, Bristol	Potential Historic Resources
82 Peaked Hill Road, Bristol	Potential Historic Resources
916 South Main St/NH 3A, Bristol	Potential Historic Resources
Androscoggin River, off NH 104/Summer Street, Bristol	Potential Historic Resources
No address identified, Bristol	Potential Historic Resources
No address identified, Bristol	Potential Historic Resources
Peak Hill Road; Locke Road; Old Stage Road, Bristol	Potential Historic Resources
River Road corner Peaked Hill Road, Bristol	Potential Historic Resources
Summer Street, Bristol	Potential Historic Resources
Summer Street/NH 104 at Danforth Brook Road, Bristol	Potential Historic Resources
1 Carter Hill Road, Canterbury	Potential Historic Resources
1 Southwest Road, Canterbury	Potential Historic Resources
"1, 2, 4, 5, 8, 12, 16	Potential Historic Resources
Hethlon Road; 106 Boyce Road", Canterbury	Potential Historic Resources
10 Oak Hill Road, Canterbury	Potential Historic Resources
109 Southwest Road, Canterbury	Potential Historic Resources
11 Cogswell Hill Road, Canterbury	Potential Historic Resources
112 West, Canterbury	Potential Historic Resources
115 Southwest Road, Canterbury	Potential Historic Resources
117 West, Canterbury	Potential Historic Resources
118 West, Canterbury	Potential Historic Resources
126 Southwest Road, Canterbury	Potential Historic Resources
13 Scales Road, Canterbury	Potential Historic Resources
130 Southwest Road, Canterbury	Potential Historic Resources
130 West, Canterbury	Potential Historic Resources
134 West, Canterbury	Potential Historic Resources
146 West Road, Canterbury	Potential Historic Resources
147, 149 West Road, Canterbury	Potential Historic Resources
15 Kimball Pond Road, Canterbury	Potential Historic Resources

154 Southwest Road, Canterbury	Potential Historic Resources
"154 Southwest	Potential Historic Resources
Road/Route 132", Canterbury	Potential Historic Resources
156 West, Canterbury	Potential Historic Resources
158 Southwest Road, Canterbury	Potential Historic Resources
162 Intervale Road, Canterbury	Potential Historic Resources
"167, 169, 173, 175 West	Potential Historic Resources
Road", Canterbury	Potential Historic Resources
170 West, Canterbury	Potential Historic Resources
171 West Road, Canterbury	Potential Historic Resources
18 Boyce Road, Canterbury	Potential Historic Resources
19 New Road, Canterbury	Potential Historic Resources
19 Shoestring Road, Canterbury	Potential Historic Resources
190, 197 West Road, Canterbury	Potential Historic Resources
"204 South West	Potential Historic Resources
Road/Route 132", Canterbury	Potential Historic Resources
22 Oak Hill Road, Canterbury	Potential Historic Resources
222 Intervale Road, Canterbury	Potential Historic Resources
250, 260 West Road, Canterbury	Potential Historic Resources
294 Old Tilton Road, Canterbury	Potential Historic Resources
304 Intervale Road, Canterbury	Potential Historic Resources
31 West Road, Canterbury	Potential Historic Resources
325 Southwest Road, Canterbury	Potential Historic Resources
328 Southwest Road,, Canterbury	Potential Historic Resources
347 Northwest Road, Canterbury	Potential Historic Resources
35 Fife Road, Canterbury	Potential Historic Resources
368 Northwest Road, Canterbury	Potential Historic Resources
386 Northwest Road, Canterbury	Potential Historic Resources
39 New Road, Canterbury	Potential Historic Resources
"4, 6, 12, 14, 20, 24 Old	Potential Historic Resources
Boyce Road", Canterbury	Potential Historic Resources
404 Intervale Road, Canterbury	Potential Historic Resources

415 Northwest Road, Canterbury	Potential Historic Resources
42 Wilson Road, Canterbury	Potential Historic Resources
427 Northwest Road, Canterbury	Potential Historic Resources
43, 48 Boyce Road, Canterbury	Potential Historic Resources
44 Old Boyce Road, Canterbury	Potential Historic Resources
45 Southwest Road, Canterbury	Potential Historic Resources
48 Wilson Road, Canterbury	Potential Historic Resources
"49, 51, 52, 61, 62 Boyce Road", Canterbury	Potential Historic Resources
490 Northwest Road, Canterbury	Potential Historic Resources
502 Northwest Road, Canterbury	Potential Historic Resources
516 and 526 Northwest Road, Canterbury	Potential Historic Resources
533 Northwest Road, Canterbury	Potential Historic Resources
544 Northwest Road, Canterbury	Potential Historic Resources
568 Northwest Road, Canterbury	Potential Historic Resources
581 Northwest Road, Canterbury	Potential Historic Resources
588 Northwest Road, Canterbury	Potential Historic Resources
6 Carter Hill Road, Canterbury	Potential Historic Resources
6 Randall Road, Canterbury	Potential Historic Resources
62 West Road, Canterbury	Potential Historic Resources
63 Old Schoolhouse Road, Canterbury	Potential Historic Resources
64 Wilson Road, Canterbury	Potential Historic Resources
65 Pickard Road, Canterbury	Potential Historic Resources
66 Cogswell Hill Road, Canterbury	Potential Historic Resources
68 Southwest Road, Canterbury	Potential Historic Resources
7 Carter Hill Road, Canterbury	Potential Historic Resources
7 West Road, Canterbury	Potential Historic Resources
"75 Southwest Road/Route 132", Canterbury	Potential Historic Resources
76 Intervale Road, Canterbury	Potential Historic Resources
79 West Road, Canterbury	Potential Historic Resources
8 Boyce Road, Canterbury	Potential Historic Resources

8 Cogswell Hill Road, Canterbury	Potential Historic Resources
"85 Southwest	Potential Historic Resources
Road/Route 132", Canterbury	Potential Historic Resources
87 West Road, Canterbury	Potential Historic Resources
"90 Southwest	Potential Historic Resources
Road/Route 132", Canterbury	Potential Historic Resources
91 Intervale Road, Canterbury	Potential Historic Resources
"91 Southwest	Potential Historic Resources
Road/Route 132", Canterbury	Potential Historic Resources
94 Intervale Road, Canterbury	Potential Historic Resources
97 Center Road, Canterbury	Potential Historic Resources
103 Haynes Road, Clarksville	Potential Historic Resources
135 West Road, Clarksville	Potential Historic Resources
14 Moose Mountain Road, Clarksville	Potential Historic Resources
147 Route 145, Clarksville	Potential Historic Resources
164 Route 145, Clarksville	Potential Historic Resources
17 Finch Lane, Clarksville	Potential Historic Resources
222 Route 145, Clarksville	Potential Historic Resources
237 Route 145, Clarksville	Potential Historic Resources
263 West Road, Clarksville	Potential Historic Resources
27 Route 3, Clarksville	Potential Historic Resources
277 Wiswell Road, Clarksville	Potential Historic Resources
3 Finch Lane, Clarksville	Potential Historic Resources
33 Wiswell Road, Clarksville	Potential Historic Resources
344 Route 145, Clarksville	Potential Historic Resources
347 West Road, Clarksville	Potential Historic Resources
395 Route 145, Clarksville	Potential Historic Resources
396 West Road, Clarksville	Potential Historic Resources
408 NH Route 145, Clarksville	Potential Historic Resources
43 Foskett Drive, Clarksville	Potential Historic Resources
54 West Road, Clarksville	Potential Historic Resources
55 West Road, Clarksville	Potential Historic Resources

647 Route 145/West Road, Clarksville	Potential Historic Resources
73 West Road, Clarksville	Potential Historic Resources
91 Route 3, Clarksville	Potential Historic Resources
97 West Road, Clarksville	Potential Historic Resources
Clarksville Pond Road, Clarksville	Potential Historic Resources
Old County Road, corner of Route 145, Clarksville	Potential Historic Resources
Route 145, Clarksville	Potential Historic Resources
West Road, Clarksville	Potential Historic Resources
1 N. Curtisville Road, Concord	Potential Historic Resources
1 Sanborn Road, Concord	Potential Historic Resources
"1, 11 Curtisville Road, 68,	Potential Historic Resources
78 S Curtisville Road, 15 Frost Road", Concord	Potential Historic Resources
1, 5, 7 Old Loudon Road, Concord	Potential Historic Resources
"10, 16, 24, 26, 36 E.	Potential Historic Resources
Sugar Ball Road", Concord	Potential Historic Resources
101 Manchester Street, Concord	Potential Historic Resources
103 Old Loudon Road, Concord	Potential Historic Resources
110 Boyce Road; 1, 5, 12 Hoit Road, Concord	Potential Historic Resources
110 Curtisville Road, Concord	Potential Historic Resources
114 Portsmouth Street, Concord	Potential Historic Resources
115 Oak Hill Road, Concord	Potential Historic Resources
12 Oak Hill Road, Concord	Potential Historic Resources
121 - 173 Mountain Road, Concord	Potential Historic Resources
12-14 S. Curtisville Road, Concord	Potential Historic Resources
124 Airport Road, Concord	Potential Historic Resources
126 Manchester Street, Concord	Potential Historic Resources
126, 130, 131 Portsmouth Street, Concord	Potential Historic Resources
127 Loudon Road, Concord	Potential Historic Resources
128 East Side Drive, Concord	Potential Historic Resources
130 East Side Drive, Concord	Potential Historic Resources
130-283 Oak Hill Road, Concord	Potential Historic Resources

131 Hoit Road, Concord	Potential Historic Resources
131 Shaker Road, Concord	Potential Historic Resources
133, 135 Airport Road, Concord	Potential Historic Resources
133-149 Pembroke Road; Guay Street; 1-13 Cricket Lane; Temi Road; Denis Drive, Concord	Potential Historic Resources
134 Manchester Street, Concord	Potential Historic Resources
135B Pembroke Road, Concord	Potential Historic Resources
138 East Side Drive, Concord	Potential Historic Resources
138 Snowpond Road, Concord	Potential Historic Resources
14 Graham Road, Concord	Potential Historic Resources
141-143 Portsmouth Street, Concord	Potential Historic Resources
"144-176 Airport Road, 3-	Potential Historic Resources
20 Cherry Street, 3-22	Potential Historic Resources
Greenwich Street, 16-26 Marion Street, 4 Eldridge Street, 3, 8 Mulberry Street", Concord	Potential Historic Resources
145-153 Airport Road, Concord	Potential Historic Resources
146 and 152 Snow Pond, Concord	Potential Historic Resources
149 Loudon Road, Concord	Potential Historic Resources
15 Old Suncook Road, Concord	Potential Historic Resources
150 East Side Drive, Concord	Potential Historic Resources
153 Hoit Road, Concord	Potential Historic Resources
154 Portsmouth Street, Concord	Potential Historic Resources
158 East Side Drive, Concord	Potential Historic Resources
161 Hoit Road, Concord	Potential Historic Resources
161 Portsmouth Street, Concord	Potential Historic Resources
"163, 165, 173, 175	Potential Historic Resources
Pembroke Road", Concord	Potential Historic Resources
166 Portsmouth Street, Concord	Potential Historic Resources
169 Loudon Road, Concord	Potential Historic Resources
17 Graham Road, Concord	Potential Historic Resources
173 Portsmouth Street, Concord	Potential Historic Resources
175 Manchester St, Concord	Potential Historic Resources

177, 185 Portsmouth Street, Concord	Potential Historic Resources
18 Sanborn Road, Concord	Potential Historic Resources
183 Mountain Road, Concord	Potential Historic Resources
183 Shaker Road, Concord	Potential Historic Resources
184 Shaker Road or is it 108 Shaker Road, Concord	Potential Historic Resources
190 Manchester Street, Concord	Potential Historic Resources
191 Loudon Road, Concord	Potential Historic Resources
192 Manchester Street, Concord	Potential Historic Resources
197 Mountain Road, Concord	Potential Historic Resources
199 Loudon Road, Concord	Potential Historic Resources
201 East Side Drive, Concord	Potential Historic Resources
"202, 204, 208, 208a, 210,	Potential Historic Resources
212, 214, 216, 218, 220,	Potential Historic Resources
222 East Side Drive; 2,	Potential Historic Resources
14, 16 North Curtisville", Concord	Potential Historic Resources
203 Portsmouth Street, Concord	Potential Historic Resources
"208-228, 219-223 Airport	Potential Historic Resources
Road", Concord	Potential Historic Resources
211 Portsmouth Street, Concord	Potential Historic Resources
22 Country Club Lane, Concord	Potential Historic Resources
220 Pembroke Road, Concord	Potential Historic Resources
226 Sewalls Falls Road, Concord	Potential Historic Resources
226, 228, 230 Portsmouth Street, Concord	Potential Historic Resources
227 Mountain Road, Concord	Potential Historic Resources
228 Sewalls Falls Road, Concord	Potential Historic Resources
229 East Side Drive, Concord	Potential Historic Resources
"23, 27, 29, 33, 35, 16, 20,	Potential Historic Resources
36 Burns Avenue", Concord	Potential Historic Resources
233 East Side Drive, Concord	Potential Historic Resources
235 Mountain Road, Concord	Potential Historic Resources
236-270 East Side Drive; 3-9, 2-12 Putney Ave, Concord	Potential Historic Resources

24 Pembroke Road, Concord	Potential Historic Resources
240 Mountain Road, Concord	Potential Historic Resources
243 Mountain Road, Concord	Potential Historic Resources
243 Sheep Davis Road; 212 Pembroke Road, Concord	Potential Historic Resources
245 Loudon Road, Concord	Potential Historic Resources
250 Mountain Road, Concord	Potential Historic Resources
250 Shaker Road, Concord	Potential Historic Resources
253 Sheep Davis Road, Concord	Potential Historic Resources
"259, 263, 269, 279	Potential Historic Resources
Mountain Road", Concord	Potential Historic Resources
26 Appleton Street, Concord	Potential Historic Resources
26, 29 Shaker Road, Concord	Potential Historic Resources
262 Sheep Davis, Concord	Potential Historic Resources
"262, 264, 272, 274 Route	Potential Historic Resources
106/Sheep Davis Road", Concord	Potential Historic Resources
27 Cemetery Street, Concord	Potential Historic Resources
279 Portsmouth Street, Concord	Potential Historic Resources
279, 286 Shaker Road, Concord	Potential Historic Resources
283 Mountain Road, Concord	Potential Historic Resources
291 Portsmouth Street, Concord	Potential Historic Resources
295 Portsmouth Street, Concord	Potential Historic Resources
296 Loudon Road, Concord	Potential Historic Resources
"299, 311 (modern), 313	Potential Historic Resources
Portsmouth Street, 65,	Potential Historic Resources
71, 75, 79, 102, 108, 111	Potential Historic Resources
Old Loudon Road, 371 Loudon Road", Concord	Potential Historic Resources
30 East Side Drive, Concord	Potential Historic Resources
30 Graham Road, Concord	Potential Historic Resources
30 Old Loudon Road, Concord	Potential Historic Resources
31 and 41 Appleton Street, Concord	Potential Historic Resources
32 Snow Pond Road, Concord	Potential Historic Resources

32-50 East Side Drive, Concord	Potential Historic Resources
33 Cemetery Street, Concord	Potential Historic Resources
33 Christian Avenue, Concord	Potential Historic Resources
33 Old Loudon Road, Concord	Potential Historic Resources
339 Mountain Road, Concord	Potential Historic Resources
349, 356, 369 Mountain Road, Concord	Potential Historic Resources
36 Old Loudon Road; 285, 287 Loudon Road, Concord	Potential Historic Resources
364-372 Mountain Road, Concord	Potential Historic Resources
3-7 Break O' Day Drive, Concord	Potential Historic Resources
370 Shaker Road, Concord	Potential Historic Resources
379 Mountain Road, Concord	Potential Historic Resources
380 Mountain Road, Concord	Potential Historic Resources
384 Loudon Road, Concord	Potential Historic Resources
388 Mountain Road, Concord	Potential Historic Resources
39 Oak Hill Road, Concord	Potential Historic Resources
39 Sanborn Road, Concord	Potential Historic Resources
390 Loudon Road, Concord	Potential Historic Resources
391 Loudon Road/6 Break O' Day Drive, Concord	Potential Historic Resources
393 Mountain Road, Concord	Potential Historic Resources
4 Batchelder Mill Road, Concord	Potential Historic Resources
4 Sanborn Road, Concord	Potential Historic Resources
405 Mountain Road, Concord	Potential Historic Resources
"41, 42, 37, 40 Shaker Road", Concord	Potential Historic Resources
"4-10 Eastern Ave; 9, 10, 11, 14, 15, 16, 18, 22 East Side Drive", Concord	Potential Historic Resources
413 Mountain Road, Concord	Potential Historic Resources
419 Mountain Road, Concord	Potential Historic Resources
441 Mountain Road, Concord	Potential Historic Resources
445 Mountain Road, Concord	Potential Historic Resources

456 Mountain Road, Concord	Potential Historic Resources
46 and 54 Appleton Street, Concord	Potential Historic Resources
469 Mountain Road, Concord	Potential Historic Resources
47 Oak Hill Road, Concord	Potential Historic Resources
490-496 Mountain Road, Concord	Potential Historic Resources
498 Mountain Road, Concord	Potential Historic Resources
50, 52 Snow Pond Road, Concord	Potential Historic Resources
51 Old Loudon Road, Concord	Potential Historic Resources
514 Mountain Road, Concord	Potential Historic Resources
"54 East Side Drive; 3-21	Potential Historic Resources
Partridge Road; 7-9, 12	Potential Historic Resources
Jay Drive; 11, 14, 15 Robin Road", Concord	Potential Historic Resources
549 Mountain Road, Concord	Potential Historic Resources
"55, 63, 65, 69 Shawmut	Potential Historic Resources
Street; 62, 65 Cemetery Street", Concord	Potential Historic Resources
569 Mountain Road, Concord	Potential Historic Resources
572 Mountain Road, Concord	Potential Historic Resources
587 Mountain Road, Concord	Potential Historic Resources
59 East Side Drive, Concord	Potential Historic Resources
59 Shaker Road, Concord	Potential Historic Resources
6 Styles Drive, Concord	Potential Historic Resources
65 East Side Drive, Concord	Potential Historic Resources
65-91 Airport Road, Concord	Potential Historic Resources
67 Appleton Street, Concord	Potential Historic Resources
"67-127 Pembroke Road,	Potential Historic Resources
1-57 Branch Turnpike, 5-	Potential Historic Resources
22 Allard Street, 100-180 Loudon Road, Canterbury Road (all), Blodgett Street (all), Grover Street (all), Robinson Street (all), Grant Street (all), Greeley Street (all), Dudley Drive (all), Chase Street (" , Concord	Potential Historic Resources
68-74 Shaker Road, Concord	Potential Historic Resources
7 Old Suncook Road, Concord	Potential Historic Resources
71 - 110 Mountain Road, Concord	Potential Historic Resources

73 Hoit Road, Concord	Potential Historic Resources
"74, 78-80, 85-87, 91	Potential Historic Resources
Shawmut Street; 7 Oak Hill Road; 1 Appleton Street", Concord	Potential Historic Resources
76 Portsmouth Street, Concord	Potential Historic Resources
77 East Side Drive, Concord	Potential Historic Resources
79 East Side Drive, Concord	Potential Historic Resources
84 Snow Pond Road, Concord	Potential Historic Resources
86 Oak Hill Road, Concord	Potential Historic Resources
87 Shaker Road, Concord	Potential Historic Resources
88 Portsmouth Street, Concord	Potential Historic Resources
88 Shaker Road, Concord	Potential Historic Resources
89 and 91 Appleton Street, Concord	Potential Historic Resources
9 Broken Bridge Road, Concord	Potential Historic Resources
9 Cemetery Street, Concord	Potential Historic Resources
90 East Side Drive, Concord	Potential Historic Resources
92 Sanborn Road, Concord	Potential Historic Resources
95 Shaker Road, Concord	Potential Historic Resources
98 Appleton Street, Concord	Potential Historic Resources
99 Airport Road, Concord	Potential Historic Resources
Airport Road, Concord	Potential Historic Resources
No address identified, Concord	Potential Historic Resources
No address identified, Concord	Potential Historic Resources
No address identified, Concord	Potential Historic Resources
Snow Pond Road, Concord	Potential Historic Resources
The western part of Shawmut Street the westernmost part of Portsmouth St, all of Eastman St, Carpenter St, Mill St, the westernmost part of East Side Dr and Shawmut St, all of Fernald St, Kearsarge St, and Winthrop St, the southernmost part of Mountain, Concord	Potential Historic Resources
1041 Whitefield Road, Dalton	Potential Historic Resources
1056 Whitefield Road, Dalton	Potential Historic Resources
13 White Road, Dalton	Potential Historic Resources

145 Faraway Road, Dalton	Potential Historic Resources
164 Faraway Road, Dalton	Potential Historic Resources
23 Hall Road, Dalton	Potential Historic Resources
364 Faraway Road, Dalton	Potential Historic Resources
38 Faraway Road, Dalton	Potential Historic Resources
397 Forest Lake Road, Dalton	Potential Historic Resources
418 Faraway Road, Dalton	Potential Historic Resources
481 Forest Lake Road, Dalton	Potential Historic Resources
66, 70 Faraway Road, Dalton	Potential Historic Resources
971 Whitefield Road, Dalton	Potential Historic Resources
986 Whitefield Road, Dalton	Potential Historic Resources
Faraway Road, Dalton	Potential Historic Resources
No address identified, Dalton	Potential Historic Resources
1 and 3 Ridge Road, Deerfield	Potential Historic Resources
"1 Candia Road, 1-14 Old	Potential Historic Resources
Center Road South", Deerfield	Potential Historic Resources
"10 Meetinghouse Hill	Potential Historic Resources
Road", Deerfield	Potential Historic Resources
10 North Road, Deerfield	Potential Historic Resources
10 Parade Road, Deerfield	Potential Historic Resources
105 Nottingham Road, Deerfield	Potential Historic Resources
109 Nottingham Road, Deerfield	Potential Historic Resources
"10A Meetinghouse Hill	Potential Historic Resources
Road", Deerfield	Potential Historic Resources
11 North Road/Route 43/ Route 107, Deerfield	Potential Historic Resources
110 Nottingham Road, Deerfield	Potential Historic Resources
112 Nottingham Road, Deerfield	Potential Historic Resources
115 Nottingham Road, Deerfield	Potential Historic Resources
12 North Road, Deerfield	Potential Historic Resources
12 Raymond Road, Deerfield	Potential Historic Resources
122 Nottingham Road, Deerfield	Potential Historic Resources
123 Nottingham Road, Deerfield	Potential Historic Resources

127 Nottingham Road, Deerfield	Potential Historic Resources
13 Cate Road, Deerfield	Potential Historic Resources
13 North Road, Deerfield	Potential Historic Resources
137 Mt. Delight Road, Deerfield	Potential Historic Resources
144 Nottingham Road, Deerfield	Potential Historic Resources
15 Raymond Road, Deerfield	Potential Historic Resources
155 Nottingham Road, Deerfield	Potential Historic Resources
157 Mt. Delight Road, Deerfield	Potential Historic Resources
16 Cate Road, Deerfield	Potential Historic Resources
16 Harvey Road, Deerfield	Potential Historic Resources
17 Ridge Road, Deerfield	Potential Historic Resources
170 Nottingham Road, Deerfield	Potential Historic Resources
181 Mt. Delight Road, Deerfield	Potential Historic Resources
19 Candia Road, Deerfield	Potential Historic Resources
19 Raymond Road, Deerfield	Potential Historic Resources
2 North Road, Deerfield	Potential Historic Resources
2 Raymond Road, Deerfield	Potential Historic Resources
2, 4, 5, 8 James City Road; 1, 7 Mountain Road; 11, 12 Nottingham Road, Deerfield	Potential Historic Resources
20 Harvey Road, Deerfield	Potential Historic Resources
20 Mt. Delight Road, Deerfield	Potential Historic Resources
205 Mt. Delight Road, Deerfield	Potential Historic Resources
209 Mt. Delight Road, Deerfield	Potential Historic Resources
"21 Meetinghouse Hill	Potential Historic Resources
Road", Deerfield	Potential Historic Resources
21 Parade Road, Deerfield	Potential Historic Resources
217 Middle Road, Deerfield	Potential Historic Resources
217 Mt. Delight Road, Deerfield	Potential Historic Resources
23 Haynes Road, Deerfield	Potential Historic Resources
23 Lang Road, Deerfield	Potential Historic Resources
23 Raymond Road, Deerfield	Potential Historic Resources
231 Middle Road, Deerfield	Potential Historic Resources

235 Middle Road, Deerfield	Potential Historic Resources
236 Middle Road, Deerfield	Potential Historic Resources
237 Middle Road, Deerfield	Potential Historic Resources
237A Middle Road, Deerfield	Potential Historic Resources
24 Mt. Delight Road, Deerfield	Potential Historic Resources
24 Parade Road, Deerfield	Potential Historic Resources
24 Raymond Road, Deerfield	Potential Historic Resources
243 Middle Road, Deerfield	Potential Historic Resources
26 Raymond Road, Deerfield	Potential Historic Resources
27 Raymond Road, Deerfield	Potential Historic Resources
274 Middle Road, Deerfield	Potential Historic Resources
278 Middle Road, Deerfield	Potential Historic Resources
279 Middle Road, Deerfield	Potential Historic Resources
28 Raymond Road, Deerfield	Potential Historic Resources
288 South Road, Deerfield	Potential Historic Resources
29 Candia Road, Deerfield	Potential Historic Resources
3 Millstone Lane, Deerfield	Potential Historic Resources
3 North Road, Deerfield	Potential Historic Resources
30 Raymond Road, Deerfield	Potential Historic Resources
31 Raymond Road, Deerfield	Potential Historic Resources
31 Ridge Road, Deerfield	Potential Historic Resources
35 Raymond Road, Deerfield	Potential Historic Resources
36 Raymond Road, Deerfield	Potential Historic Resources
37 Candia Road, Deerfield	Potential Historic Resources
37 Ridge Road, Deerfield	Potential Historic Resources
38 North Road, Deerfield	Potential Historic Resources
39 Mt. Delight Road, Deerfield	Potential Historic Resources
"4 Harvey Road; 11-73, 12-	Potential Historic Resources
64 Nottingham Road; 3	Potential Historic Resources
Parade Road", Deerfield	Potential Historic Resources
4 North Road, Deerfield	Potential Historic Resources
40 North Road, Deerfield	Potential Historic Resources

40 Raymond Road, Deerfield	Potential Historic Resources
41 Raymond Road, Deerfield	Potential Historic Resources
45 North Road, Deerfield	Potential Historic Resources
48 Ridge Road, Deerfield	Potential Historic Resources
"49-53 Meetinghouse Hill Road plus cemetery", Deerfield	Potential Historic Resources
4a North Road, Deerfield	Potential Historic Resources
5 Mt. Delight Road, Deerfield	Potential Historic Resources
5 North Road, Deerfield	Potential Historic Resources
5 Perry Road, Deerfield	Potential Historic Resources
51 Church Street, Deerfield	Potential Historic Resources
51 Ridge Road, Deerfield	Potential Historic Resources
52 Ridge Road, Deerfield	Potential Historic Resources
53 Mt. Delight Road, Deerfield	Potential Historic Resources
53 North Road, Deerfield	Potential Historic Resources
56 Mountain Road, Deerfield	Potential Historic Resources
56 Ridge Road, Deerfield	Potential Historic Resources
58 Church Street, Deerfield	Potential Historic Resources
63 Coffeetown Road, Deerfield	Potential Historic Resources
65 Nottingham Road (on), Deerfield	Potential Historic Resources
65 Ridge Road, Deerfield	Potential Historic Resources
67 Candia Road, Deerfield	Potential Historic Resources
68 Church Street, Deerfield	Potential Historic Resources
70 Church Street, Deerfield	Potential Historic Resources
72 Nottingham Road, Deerfield	Potential Historic Resources
76 Nottingham Road, Deerfield	Potential Historic Resources
8 Mt.. Delight Road, Deerfield	Potential Historic Resources
8 Old Centre Road, Deerfield	Potential Historic Resources
8 Raymond Road, Deerfield	Potential Historic Resources
84 Ridge Road, Deerfield	Potential Historic Resources
9 North Road, Deerfield	Potential Historic Resources
9 Old Centre Road, Deerfield	Potential Historic Resources

95 Mt. Delight Road, Deerfield	Potential Historic Resources
Candia Road, Deerfield	Potential Historic Resources
Candia Road, Deerfield	Potential Historic Resources
Cate Road, Deerfield	Potential Historic Resources
Haynes Road, Deerfield	Potential Historic Resources
Middle Road, Deerfield	Potential Historic Resources
Mt. Delight Road, Deerfield	Potential Historic Resources
Mt. Delight Road, Deerfield	Potential Historic Resources
No address identified, Deerfield	Potential Historic Resources
Nottingham Road, Deerfield	Potential Historic Resources
Nottingham Road, north side, Deerfield	Potential Historic Resources
Nottingham Road, south side, Deerfield	Potential Historic Resources
Perry Road, Deerfield	Potential Historic Resources
Raymond Road, Deerfield	Potential Historic Resources
Ridge Road, Deerfield	Potential Historic Resources
South Road, Deerfield	Potential Historic Resources
? Holt Road, Dummer	Potential Historic Resources
? Plain Road, Dummer	Potential Historic Resources
109 Kelly Brook Road, Dummer	Potential Historic Resources
115 Holt Road, Dummer	Potential Historic Resources
127 Holt Road, Dummer	Potential Historic Resources
130 Plain Road, Dummer	Potential Historic Resources
138 Plain Road, Dummer	Potential Historic Resources
17 Kelly Brook Road, Dummer	Potential Historic Resources
26 Holt Road, Dummer	Potential Historic Resources
48 Holt Road, Dummer	Potential Historic Resources
6 Kelly Brook Road, Dummer	Potential Historic Resources
60 Holt Road, Dummer	Potential Historic Resources
611 NH 16, Dummer	Potential Historic Resources
616 NH 16, Dummer	Potential Historic Resources
Androscoggin River off Berlin Road/NH 16, Dummer	Potential Historic Resources

Island in Big Dummer Pond, Dummer	Potential Historic Resources
Kelly Brook Road, Dummer	Potential Historic Resources
Kelly Brook Road, Dummer	Potential Historic Resources
Off Dummer Pond Road, Little Dummer Pond, Dummer	Potential Historic Resources
Off Dummer Pond Road,on Big Dummer Pond, Dummer	Potential Historic Resources
Off Dummer Pond Road,on Big Dummer Pond, Dummer	Potential Historic Resources
West Dummer Road, Dummer	Potential Historic Resources
11 Wing Road, Epsom	Potential Historic Resources
"123 Suncook Valley	Potential Historic Resources
Highway/NH 28", Epsom	Potential Historic Resources
"125, 133 Suncook Valley	Potential Historic Resources
Highway (Route 28)", Epsom	Potential Historic Resources
"126 Suncook Valley	Potential Historic Resources
Highway (Route 28)", Epsom	Potential Historic Resources
"161 Suncook Valley	Potential Historic Resources
Highway (Route 28)", Epsom	Potential Historic Resources
"181 Suncook Valley	Potential Historic Resources
Highway/NH 28", Epsom	Potential Historic Resources
"192 Suncook Valley	Potential Historic Resources
Highway/NH 28", Epsom	Potential Historic Resources
2 Fowler Road, Epsom	Potential Historic Resources
23 Drolet Road, Epsom	Potential Historic Resources
"238, 229, 241, 266, 289	Potential Historic Resources
New Rye Road; 30 Nash Lane; 8, 65 Baybutt Road;	Potential Historic Resources
34 Howard Lane", Epsom	Potential Historic Resources
274 River Road, Epsom	Potential Historic Resources
276 River Road, Epsom	Potential Historic Resources
29 Martin Hill Road, Epsom	Potential Historic Resources
294 New Rye Road, Epsom	Potential Historic Resources

345 New Rye Road, Epsom	Potential Historic Resources
35 Fowler Road, Epsom	Potential Historic Resources
350 New Rye Road, Epsom	Potential Historic Resources
352 River Road, Epsom	Potential Historic Resources
357 New Rye Road, Epsom	Potential Historic Resources
378 River Road, Epsom	Potential Historic Resources
38 Fowler Road, Epsom	Potential Historic Resources
38 Martin Hill Road, Epsom	Potential Historic Resources
4 Drolet Road, Epsom	Potential Historic Resources
"432, 429, 421, 405, 402	Potential Historic Resources
New Rye Road Epsom, 89 New Rye Road Allenstown", Epsom	Potential Historic Resources
5 Wing Road, Epsom	Potential Historic Resources
59 Martin Hill Road, Epsom	Potential Historic Resources
73 Wing Road, Epsom	Potential Historic Resources
83 Martin Hill Road, Epsom	Potential Historic Resources
"90 Suncook Valley	Potential Historic Resources
Highway/NH 28", Epsom	Potential Historic Resources
98 Martin Hill Road, Epsom	Potential Historic Resources
Martin Hill Road, Epsom	Potential Historic Resources
"100, 110, 116, 122, 134	Potential Historic Resources
Salisbury Road", Franklin	Potential Historic Resources
"1008, 1024, 1029 Hill	Potential Historic Resources
Road", Franklin	Potential Historic Resources
1040 Hill Road, Franklin	Potential Historic Resources
1079 South Main Street, Franklin	Potential Historic Resources
"10-83 Salisbury Rd., 23-	Potential Historic Resources
103 Thunder Rd, 1-12 Fair St.", Franklin	Potential Historic Resources
119 Lake Shore Drive, Franklin	Potential Historic Resources
12 Chase Drive, Franklin	Potential Historic Resources
1200 South Main Street, Franklin	Potential Historic Resources
1204 South Main Street, Franklin	Potential Historic Resources

122-236 New Hampton Road, Franklin	Potential Historic Resources
123 Lake Shore Drive, Franklin	Potential Historic Resources
123 Webster Lake Road, Franklin	Potential Historic Resources
1300 South Main Street, Franklin	Potential Historic Resources
131 North Road, Franklin	Potential Historic Resources
133 Salisbury Road, Franklin	Potential Historic Resources
136 Webster Lake Rd, Franklin	Potential Historic Resources
14 North Shore Lane, Franklin	Potential Historic Resources
14 Timberland Drive, Franklin	Potential Historic Resources
142 Hill Road, Franklin	Potential Historic Resources
143 Lake Shore Drive, Franklin	Potential Historic Resources
145 Salisbury Road, Franklin	Potential Historic Resources
147 Lake Shore Drive, Franklin	Potential Historic Resources
15, 16, 17 Colby Ave, Franklin	Potential Historic Resources
151 Lake Shore Drive, Franklin	Potential Historic Resources
153 Lake Shore Drive, Franklin	Potential Historic Resources
155 Lake Shore Drive, Franklin	Potential Historic Resources
16 North Shore Lane, Franklin	Potential Historic Resources
160 Lake Shore Drive, Franklin	Potential Historic Resources
161 Lake Shore Drive, Franklin	Potential Historic Resources
163 Lake Shore Drive, Franklin	Potential Historic Resources
165 Lake Shore Drive, Franklin	Potential Historic Resources
167 Lake Shore Drive, Franklin	Potential Historic Resources
169 Lake Shore Drive, Franklin	Potential Historic Resources
17, 30, 33, 37 Lake Ave, Franklin	Potential Historic Resources
174 Lake Shore Drive, Franklin	Potential Historic Resources
175 Lake Shore Drive, Franklin	Potential Historic Resources
"176, 179, 182, 186, 202,	Potential Historic Resources
229, 252, 255, 266, 269,	Potential Historic Resources
272, 276, 281, 284	Potential Historic Resources
Webster Avenue", Franklin	Potential Historic Resources
177 Smith Hill Road, Franklin	Potential Historic Resources

178 Lake Shore Drive, Franklin	Potential Historic Resources
180, 190 Hill Road, Franklin	Potential Historic Resources
184 Lake Shore Drive, Franklin	Potential Historic Resources
186-188 Lake Shore Drive, Franklin	Potential Historic Resources
19 North Shore Lane, Franklin	Potential Historic Resources
191-207 Chance Pond Road, northern Summit Street, Franklin	Potential Historic Resources
2 Punch Brook Road, Franklin	Potential Historic Resources
2, 3, 5 and 7 Garneau Road, Franklin	Potential Historic Resources
201, 196, 199 Webster Lake Road, Log Cabin Road, Franklin	Potential Historic Resources
203 Salisbury Road, Franklin	Potential Historic Resources
203 Smith Hill Road, Franklin	Potential Historic Resources
208 Chance Pond Road, Franklin	Potential Historic Resources
213 Smith Hill Road, Franklin	Potential Historic Resources
"215, 216, 234, 246, 250,	Potential Historic Resources
254 Hill Road", Franklin	Potential Historic Resources
234 Lake Shore Drive, Franklin	Potential Historic Resources
238 Lake Shore Drive, Franklin	Potential Historic Resources
240 Lake Shore Drive, Franklin	Potential Historic Resources
242 Lake Shore Drive, Franklin	Potential Historic Resources
244 Lake Shore Drive, Franklin	Potential Historic Resources
246 Lake Shore Drive, Franklin	Potential Historic Resources
247 Salisbury Road, Franklin	Potential Historic Resources
247 Smith Hill Road, Franklin	Potential Historic Resources
248 Lake Shore Drive, Franklin	Potential Historic Resources
25 North Shore Lane, Franklin	Potential Historic Resources
252 Smith Hill Road, Franklin	Potential Historic Resources
253 Lake Shore Drive, Franklin	Potential Historic Resources
256 Lake Shore Drive, Franklin	Potential Historic Resources
261 New Hampton Road, Franklin	Potential Historic Resources
264 Lake Shore Drive, Franklin	Potential Historic Resources

266 Flag Hole Road, Franklin	Potential Historic Resources
269 Chance Pond Road, Franklin	Potential Historic Resources
27 North Shore Lane, Franklin	Potential Historic Resources
"28, 32, 34, 36, 46, 56, 62,	Potential Historic Resources
68,72, 78, 82, 86, 90, 98,	Potential Historic Resources
100 Pine Colony Road", Franklin	Potential Historic Resources
280 Lake Shore Drive, Franklin	Potential Historic Resources
288 New Hampton Road, Franklin	Potential Historic Resources
"299, 301, 305, 309, 312,	Potential Historic Resources
316, 320, 324, 326, 333,	Potential Historic Resources
339, 341 Webster Lake Road", Franklin	Potential Historic Resources
3 North Shore Lane, Franklin	Potential Historic Resources
302 Chance Pond Road, Franklin	Potential Historic Resources
302 Lake Shore Drive, Franklin	Potential Historic Resources
307, 315, 319 Lake Shore Drive, Franklin	Potential Historic Resources
308 Salisbury Road, Franklin	Potential Historic Resources
314 Hill Road, Franklin	Potential Historic Resources
321 Lake Shore Drive, Franklin	Potential Historic Resources
321 Salisbury Road, Franklin	Potential Historic Resources
345 Salisbury Road, Franklin	Potential Historic Resources
3-46 Lake Shore Drive, Franklin	Potential Historic Resources
35 North Shore Lane, Franklin	Potential Historic Resources
376, 379 Hill Road, Franklin	Potential Historic Resources
39 North Shore Lane, Franklin	Potential Historic Resources
397 Hill Road, Franklin	Potential Historic Resources
41 North Shore Lane, Franklin	Potential Historic Resources
418 Salisbury Road, Franklin	Potential Historic Resources
428 Salisbury Road, Franklin	Potential Historic Resources
43 North Shore Lane, Franklin	Potential Historic Resources
44 New Hampton Road, Franklin	Potential Historic Resources
442 Hill Road, Franklin	Potential Historic Resources
448 Hill Road, Franklin	Potential Historic Resources

45 North Shore Lane, Franklin	Potential Historic Resources
454 Hill Road, Franklin	Potential Historic Resources
456 Salisbury Road, Franklin	Potential Historic Resources
460 Hill Road, Franklin	Potential Historic Resources
470 Hill Road, Franklin	Potential Historic Resources
5 North Shore Lane, Franklin	Potential Historic Resources
512 Salisbury Road, Franklin	Potential Historic Resources
518 Hill Road, Franklin	Potential Historic Resources
522 Lake Shore Drive, Franklin	Potential Historic Resources
54, 60 New Hampton Road, Franklin	Potential Historic Resources
543 Lake Shore Drive, Franklin	Potential Historic Resources
602 Hill Road, Franklin	Potential Historic Resources
604 Salisbury Road, 373 Smith Hill Road, Franklin	Potential Historic Resources
"6-134 Webster Avenue, 2-	Potential Historic Resources
22 Arna Lane, 53, 57, 75 Lark St.", Franklin	Potential Historic Resources
656, 671, 685 Hill Road, Franklin	Potential Historic Resources
68 Bennett Brook Road, Franklin	Potential Historic Resources
7 Apple Farm Road, Franklin	Potential Historic Resources
70 Lake Avenue, Franklin	Potential Historic Resources
85 Webster Lake Road, Franklin	Potential Historic Resources
"911, 913*, 916, 917, 921,	Potential Historic Resources
923, 925 S. Main St., Holy Cross Rd., Doucette Dr., Sophie Rd., 3-39 Smith Hill Rd.", Franklin	Potential Historic Resources
Central Street between Daniel Point Road and E. Bow Street, Franklin	Potential Historic Resources
Federal Dam Access Road [location of dam] . 46 Granite Dr., Franklin, NH [Administrative Offices] both sides of Pemi River, Franklin	Potential Historic Resources
Hill Road and Old Call Road, Franklin	Potential Historic Resources
Main Street between Webster Place and Webster Dam, Franklin	Potential Historic Resources
No address identified, Franklin	Potential Historic Resources

Parts of Webster Lake Road (Rt.11) Carr, Colby Streets, Lake and Kidder Avenues. All of Daniel Webster Drive, Lawson Avenue, Range Road, Morrill Court, Franklin Knolls, Kimball Road, Hillside Circle, Spruce Court, Plains Court, Daisy Lane, Rose Lane, L, Franklin	Potential Historic Resources
South side Lark St, Robin St, Oriole St, Wren St bounded by Webster Lake Rd and Lake Ave, Franklin	Potential Historic Resources
Southern Summit Street, Valley Street, Franklin	Potential Historic Resources
12 Old Town Road, Hill	Potential Historic Resources
12 Quimby Road, Hill	Potential Historic Resources
169 Old Town Road, Hill	Potential Historic Resources
24 Sand Hill Road, Hill	Potential Historic Resources
248-265 NH Route 3A, Hill	Potential Historic Resources
38, 39 and 48 Addison Road, Hill	Potential Historic Resources
47, 71 Old Town Road, Hill	Potential Historic Resources
492 NH Route 3A, Hill	Potential Historic Resources
6 Liden Hill, Hill	Potential Historic Resources
66 Murray Hill Road, Hill	Potential Historic Resources
7 Sand Hill Road, Hill	Potential Historic Resources
75 New Chester Road, Hill	Potential Historic Resources
NH Route 3A, Crescent Street, Commerce Street, New Chester Road, Hill	Potential Historic Resources
Old Town Road, Hill	Potential Historic Resources
10 Horan Road, Jefferson	Potential Historic Resources
12 Turnpike Road, off of Route 2, Jefferson	Potential Historic Resources
201 Turnpike Road, Jefferson	Potential Historic Resources
24 Turnpike Road, Jefferson	Potential Historic Resources
40 Turnpike Road, Jefferson	Potential Historic Resources
"66 Presidential	Potential Historic Resources
Hwy/Route 2", Jefferson	Potential Historic Resources
"73 Presidential	Potential Historic Resources
Highway/Route 2", Jefferson	Potential Historic Resources
8 Turnpike Road, Jefferson	Potential Historic Resources

85 Turnpike Road, Jefferson	Potential Historic Resources
90 Turnpike Road, Jefferson	Potential Historic Resources
"98 Presidential	Potential Historic Resources
Highway/Route 2", Jefferson	Potential Historic Resources
"99 Presidential	Potential Historic Resources
Highway/Route 2", Jefferson	Potential Historic Resources

Site 102.45(f): Town and Village Centers

Name	Type of Scenic Resource
Ashland	Community Center Areas
Bethlehem	Community Center Areas
Boscawen	Community Center Areas
Bristol	Community Center Areas
Candia Four Corners	Community Center Areas
Canterbury	Community Center Areas
Center Lee	Community Center Areas
Chichester	Community Center Areas
Colebrook	Community Center Areas
Concord	Community Center Areas
Contoocook Village	Community Center Areas
Deerfield Center	Community Center Areas
Dunbarton	Community Center Areas
Epsom	Community Center Areas
Errol	Community Center Areas
Franklin	Community Center Areas
Groveton	Community Center Areas
Hill	Community Center Areas
Hooksett Village- East of The Merrimack	Community Center Areas
Hooksett Village- West of The Merrimack	Community Center Areas
Hopkinton	Community Center Areas
Jefferson	Community Center Areas

Lancaster	Community Center Areas
Littleton	Community Center Areas
Meredith Center	Community Center Areas
New Hampton Village	Community Center Areas
Northfield	Community Center Areas
Northfield Village	Community Center Areas
Nottingham Center	Community Center Areas
Penacook Village	Community Center Areas
Pittsburg	Community Center Areas
Pittsfield	Community Center Areas
Plymouth	Community Center Areas
Raymond Village	Community Center Areas
Salisbury	Community Center Areas
Sanbornton I	Community Center Areas
Sanbornton II	Community Center Areas
Stark	Community Center Areas
Suncook Village	Community Center Areas
Tilton	Community Center Areas
West Stewartstown	Community Center Areas
Whitefield	Community Center Areas

APPENDIX H:

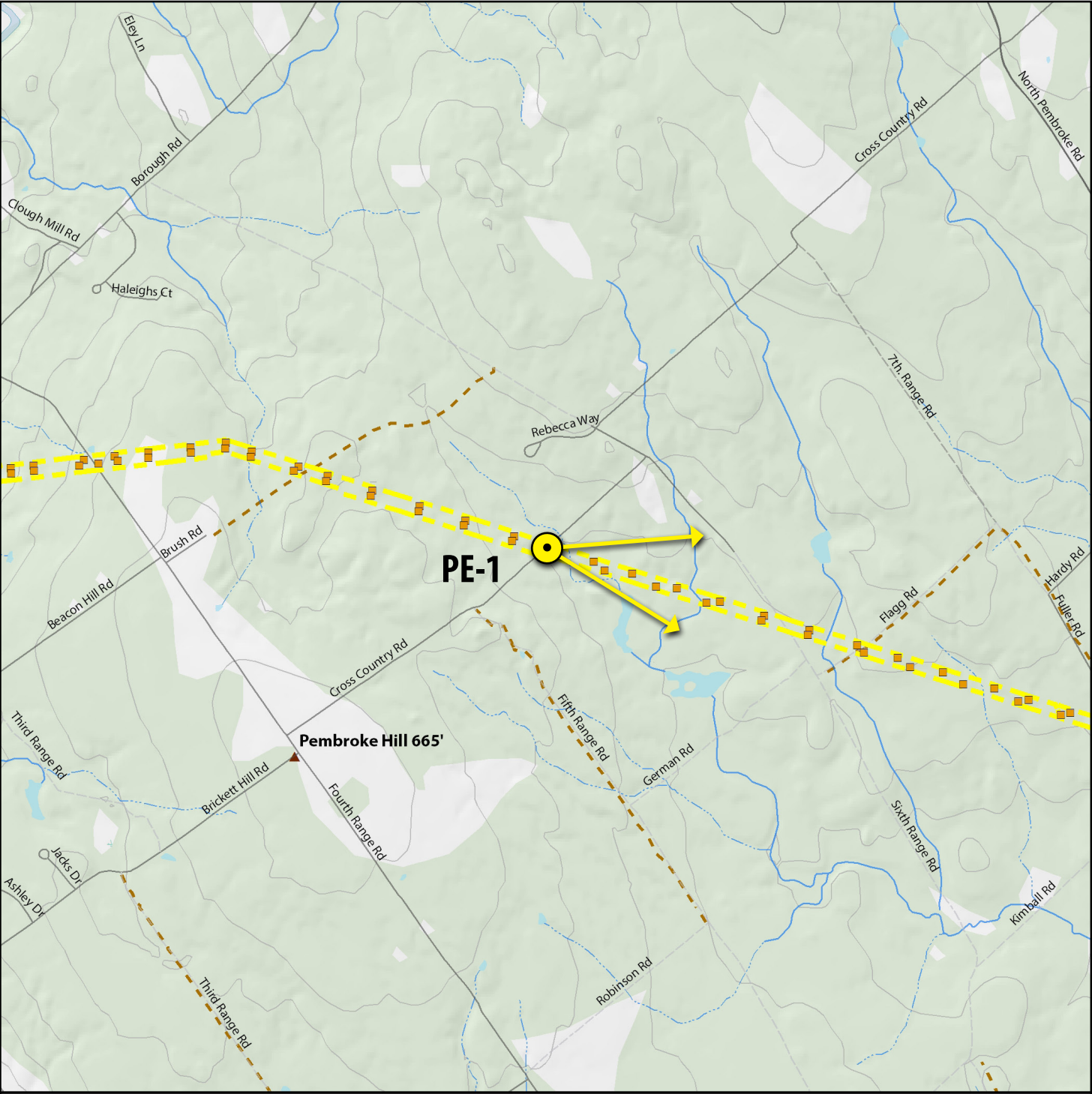
Corrections to the Review of the Northern Pass Transmission Line Visual Impact Assessment

Corrections to the NPT VIA Review

April 17, 2017

Page	Text (using Track Changes)
26	3.7.1.5 Photosimulations Must be in the AP Illustrate Visual Impacts Site 301.05(b)(87) requires that the photosimulations be “ within the area of potential visual impact <u>illustrate the potential change in the landscape that would result from construction of the proposed facility and associated infrastructure.</u> ”
54 (quote from NPT VIA)	The use of the existing corridor south of Dummer eliminates the need for a new corridor for the majority of the line and avoids the possible visual effects that a new line would have on the surrounding landscape. In locations such as these, co-location of the proposed Project with other existing lines does not minimize impacts. (NPT VIA, p. C-5) <u>In locations such as these, co-location of the proposed Project with other existing lines does not minimize impacts.</u> The co-location...
68 (Add footnote after first sentence, which ends with the word “mapping.”)	<u>The vegetated visibility analysis was prepared for the DOE VIA and includes proposed and existing-to-remain structures.</u>
72 (add sentence to end of third paragraph, which ends with “23).”	<u>This analysis included proposed and existing-to-remain structures.</u>
81 (second bullet)	• Other tourist destinations are not inventoried because a special-spatial data source could not be identified. The official New Hampshire Visitor's Guide included in Appendix D might provide a starting point.
138 (Figure 46a)	Figure 46a. Photo of the VELCO Southern Loop corridor where two 345 kV transmission lines are located in southern Vermont. The line on the left was installed circa 1971 using untreated conductors; the line on the right was installed in 2011 and used non-specular conductors. Fifty <u>Approximately 45</u> years of weathering has not eliminated the specular glare; the new transmission line with non-spectral treatment is much less visible.
138 (Figure 46b)	Figure 46b. Cropped photo of the photograph in Figure 13a <u>46a</u> . The line on the left was installed circa 1971 using untreated conductors; the line on the right was installed in 2011 and used non-specular conductors. Fifty <u>Approximately 45</u> years of weathering has not eliminated the specular glare; the new transmission line with non-spectral treatment is much less visible.
139 (Figure 47a)	Figure 47a. Photo of the VELCO Southern Loop corridor where two 345 kV transmission lines are located in southern Vermont. The line on the left was installed circa 1971 using untreated conductors; the line on the right was installed in 2011 and used non-specular conductors. Fifty <u>Approximately 45</u> years of weathering has not eliminated the specular glare; the new transmission line with non-spectral treatment is much less visible.
139 (Figure 47b)	Figure 47b. Cropped photo of the photograph in Figure 14a <u>47a</u> . The line on the left was installed circa 1971 using untreated conductors; the line on the right was installed in 2011 and used non-specular conductors. Fifty <u>Approximately 45</u> years of weathering has not eliminated the specular glare; the new transmission line with non-spectral treatment is much less visible.
140 (Figure 48a)	Figure 48a. Photo of the VELCO Southern Loop corridor where two 345 kV transmission

	lines are located in southern Vermont. The line on the bottom was installed circa 1971 using untreated conductors; the line on the top (see Figure 15b 48b) right was installed in 2011 and used non-specular conductors. Fifty Approximately 45 years of weathering has not eliminated the specular glare; the new transmission line with non-spectral treatment is much less visible.
140 (Figure 48b)	Figure 48b. Cropped portion of the photograph in Figure 15a 48a. The line on the bottom was installed circa 1971 using untreated conductors; the line on the top with non-spectral treatment is much less visible.
141 (Figure 49b)	Figure 49b. Cropped portion of the photograph in Figure 16a 49a. Even though the 345 kV transmission line uses six total conductors (top), they appear less visible than the three adjacent 115 kV conductors (bottom).
143 (top)	Undergrounding can also be utilized as offset mitigation as discussed in section 54 .4.6 below.
F-22 (SR Eval)	Because varying forms of transportation may be used (e.g. walking, running, biking, driving and/or motorcycling), duration of views would vary, but would be possible while traveling through cleared areas where views of the surrounding landscape is expected along a — 1.7 miles segment of the road
F-22 (SR Eval)	Missing distance at top of page is 85.
F-23 (SR Eval)	Missing distance at top of page is 85.
F-51	there are distant views to the Green White Mountains
F-116 (2 nd paragraph about Peaked Hill Rd. summary)	There is a medium- high expectation
Cross Country Road Simulation (Viewpoint PE-1 at page PE-1d)	Structure at right was incorrectly depicted too short, revised simulation shows taller structure in this location as proposed by NPT.
Appendix D: Towns_Within_APE_Vegetated_Viewshed	Vegetated Viewshed (Proposed and Existing-to-Remain Structures)



- Legend**
- Viewpoint
 - Existing PSNH ROW
 - Proposed Alternative 7 Burial
 - Freeway
 - Major Road
 - Secondary Road
 - Hiking Trails
 - Mountain Peaks/Natural Features
 - Alternative 7 Structure

SOURCE: ESRI 2011; GRANIT 2012; Burns and McDonnell 2013; USFS 2012; Ecology and Environment 2013, DeLorme Data, T.J. Boyle Associates

Figure 1
Viewpoint Location Map
Northern Pass Transmission Line Project
Environmental Impact Statement

0 0.25 0.5 Miles

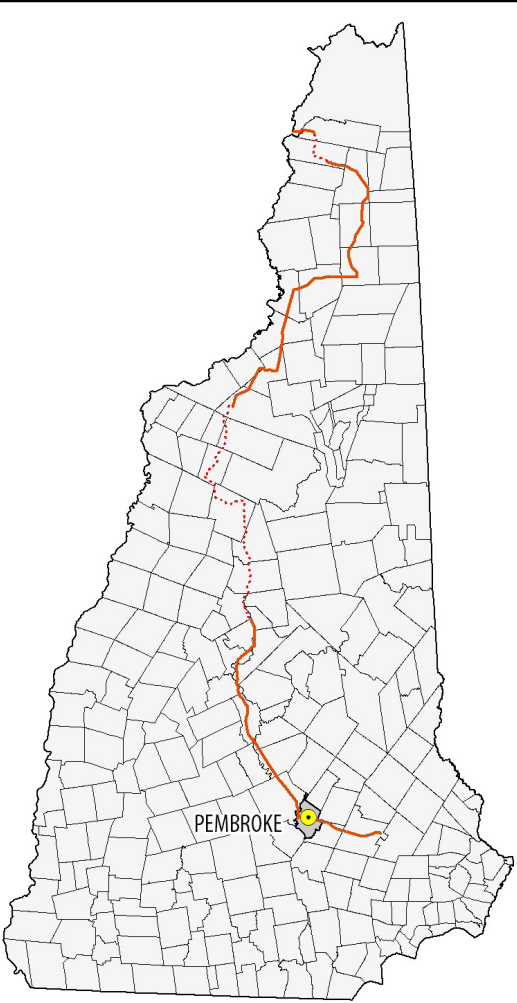


Figure 2 - Viewpoint Location

SCALE
0 20 40 60 Miles

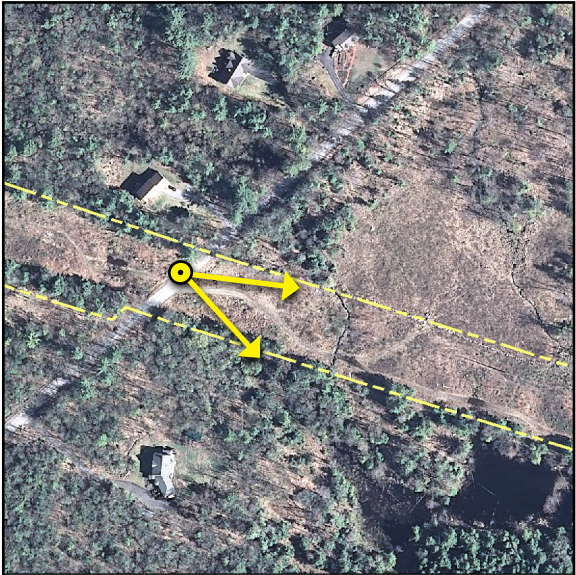


Figure 3 - Aerial Context

SCALE
0 200 400 600 Feet



General Information

Base Photograph

Date: 3-20-2013
Time: 3:24 pm
Meteorological Visibility:
Concord Airport - 9.9 miles
Image Size: 4,928 x 3,264 pixels

Camera Properties

Camera Make/Model: Nikon D7000
Sensor Dimensions: 23.6 mm x 15.6 mm
Lens Make/Model: Nikkor DX AF-S 35 mm
Lens Focal Length: 35 mm
35 mm Equivalent Focal Length: 52.5 mm
Approximate Angles of View:
37° wide and 25° high
Camera Height: 1.5 meters (5 feet)

Viewpoint Information

Location: Cross Country Road, Pembroke
Latitude/Longitude: 43.185191°, -71.449915°
Viewpoint Elevation: 521 feet
Viewpoint Name: PE-1
Orientation: Looking Southeast
Looking toward Alternative 2 Mile Marker: 173
Looking toward Alternative 7 Mile Marker: 179

Simulation Viewing Notes

The simulation is properly printed on an 11-by-17 inches sheet at actual size. If viewed on a computer monitor, use the highest screen resolution. The simulated image is at the proper perspective when viewed at 23.5 inches from the eye, or at a distance of approx. twice the image height.

Project Design

The simulations for Alternative 2 through 6b are based on the best information available in March 2014. The simulations for Alternative 7 are based on the best information available on October 2015.

Alternatives Simulated from this Viewpoint

Alternative 1 - No Action

Transmission Line Information
Distance to Nearest Visible Structure: 71 feet
Number of Visible Existing Structures: 10

Alternative 2

Transmission Line Information
Distance to Nearest Visible Structure: 71 feet
Number of Visible Transmission Structures: 27

Alternative 3

Transmission Line Information
The transmission line is buried in this view and there is no discernible visual change from the Existing Condition.

Alternatives 4a, 4b and 4c

Transmission Line Information
The Project is not visible from this viewpoint.

Alternatives 5a, 5b and 5c

Transmission Line Information
There is no visible change from Alternative 2.

Alternatives 6a and 6b

Transmission Line Information
The Project is visible, but no simulation was prepared.

Alternative 7 - Proposed Action

Transmission Line Information
Distance to Nearest Visible Structure: 71 feet
Number of Visible Transmission Structures: 27



